

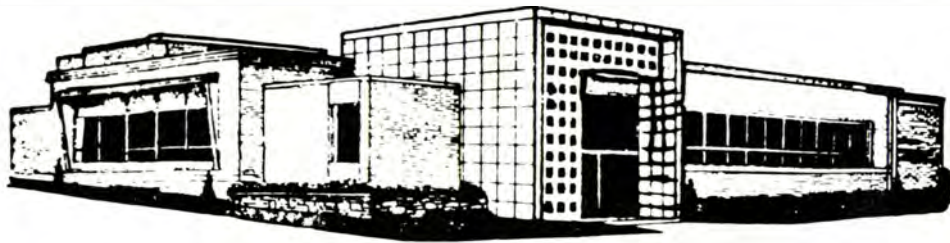


20th Annual
Michigan Tech Lode
Winter Carnival Pictorial
February 4, 1983





The Superior National BANK AND TRUST COMPANY



HANCOCK-BARAGA-HUBBELL-HOUGHTON-CC MALL
HANCOCK, MICHIGAN 49930



Main Office Banking Hours:

Monday, Tuesday,
Wednesday 9:30 to 3:00

Thursday and Friday
9:30 to 6:00

Drive-In Window
9:00 to 4:00
Monday thru Wednesday

Thursday and Friday
9:30 to 6:00



**Hancock
Hubbell-Baraga
Copper Country Mall**

**"The Bank Of
Superior Service"**

Free Parking

Drive-In Banking





Pictorial photo/Scott Heckel

Contents...

83 Winter Carnival tradition continues	2
e Finalists queen amongst them	6
arnival Stage Revue ertainment, Tech style	18
e Statue Winners best statues for 1983	26
atue Construction husiastic help is a necessity	52
usky Hockey v coach faces first season	56
ens Basketball ung team is struggling	58
omens Basketball m seeks winning season	59

Special Events The competition is keen	62
The Staff Long days, sleepless nights	66

EDITOR	Joe Hohner
ASSOCIATE EDITOR	Rob Reynolds
MANAGING EDITOR	Larry Delahanty
PHOTO EDITOR	Dave Strang
BUSINESS MANAGER	Diane Pawloski
AD PRODUCTION MANAGER	Kevin Maguire
PHOTOGRAPHIC TECHNICIAN	Don Bolger
SENIOR TYPESETTER	Lori Wright
ACCOUNTANT	Diana Jones
ADVISOR	Jim Lutzke

STAFF: Stephanie Aquirre, Sara Birdsall, Lynn Boyd, Don Brown, Jim Cichoracki, Diane Collart, Kevin Ericson, Edith Greene, Deb Hare, Scott Heckel, Paul Mlotkowski, Earl Mullins, Linda O'Melia, John Perry, Cathy Peters, Harvey Richards, Jill Rowe, Todd Stone, David Tackman, Gretchen Zellmer

The *Winter Carnival Pictorial* is an editorially independant publication of the *Michigan Tech Lode*, Michigan Technological University, Houghton, MI, 49931

Printed by the L'Anse Sentinel, 202 N. Main St., L'Anse, MI 49946

Winter Carnival has changed since its "Frost Frolic" days

BY SARA BIRDSALL
AND JIM CICHORACKI
PICTORIAL WRITERS

"Ladies and gentlemen, children of all ages, focus your attention on the main event in the Copper Country. Making its 57th annual appearance in the center ring is the spectacular, the hilarious, 1983 Winter Carnival!"

A carnival barker announcing Winter Carnival does seem a bit far-fetched for the 80's, but in 1922, when the annual winter main event had its beginning, it was a one night, one ring circus show with the name The Ice

Carnival. However, Winter Carnival did not merely begin in 1922; it began a smorgasborg of spectacular activities which is still with us today, involving not only the Tech campus, but the entire community as well. It began an animated time of year filled with talent, enthusiasm, and comedy. This spirit of fun and comedy is in the spotlight this year as the theme of "Icy Trips Through Comic Strips" takes us on a journey to the lighter side of life.

The Ice Carnival has followed an exciting, changing trail since its origin. The Ice Carnival was a one night event that became an annual tradition until the Great Depression interrupted its progress. In 1934, the Carnival returned with new vibrance under the sponsorship of the student organization, Blue Key.

The Carnival felt growing pains and expanded from one night to a fun-filled, four day festival affectionately dubbed the "Frost Frolic." The time expansion sent creative Tech minds into gear and an array of sports, talent, and honor competitions were added to the agenda.

In 1936, the most famous part of Winter Carnival, the art of snow statue building, was added to the festivities. It would seem unlikely that students who spend hundreds of hours in a technological world would find the inspiration to create such figures of artistic brilliance that would amaze the Michael Angelo's of today. But each year student organizations and local groups use their imaginations and time to create realistic icy sculptures.

One organization that expends a magnificent amount of time and energy on Winter Carnival is the festival's co-ordinator, the Blue Key Fraternity. For the 34 members of this group the future Winter Carnival begins the day after the present festivities end. While the last judge's pencil is being put away and the final streamer is being swept off of the ballroom floor, the Blue Key members are preparing to elect new officers to mastermind the next Carnival. The members choose next year's theme in the spring, select the logo in the fall, and all the while are arranging for judges, locations and special events.

Though Blue Key spends hours of serious time concentrating on the organization of Winter Carnival, it must be remembered that it is one of the most hectic times of the year. The comical air surrounding the event is best exemplified in the various special events. The "Olympic Games of the North" include such antics as dogsled races, broomball games, and the beard contest. Other more serious activities that have helped to give Carnival its popular status are the Snoball contest, the queen's competition, and the weekend hockey tournament.

The queen's competition of today has come a long way since its premiere in Winter Carnival. It began as an endurance test for a local female attending either Michigan College or Michigan Tech. The contestants were judged not only on their beauty and intelligence but also on their skiing and skating ability. Today, the competition, under the direction of Blue Key, is a contest for spectators with non-stop talent, beauty and excitement. Student organizations select a female member of the Tech student body to represent them in the competition. From these girls, usually numbering between ten and fifteen, ten finalists are chosen based on their interview with the judges. The ten final contestants then participate in a series of activities which judge much more than the physical beauty of the girls. Points are awarded to the finalist for her performance in formal interviews, the student vote, and in the talent competition. After the finalists, who have hours of practice dedicated to their performances, dazzle the audience with their acts, the judges' pencils tally the points, and the girl with the most points awarded to her will reign over the Winter Carnival.

Though talent is abundant in the queen's competition, Winter Carnival packs talent all throughout its four day reign. Unknown to many, the notoriety of Winter Carnival grew during earlier years, drawing national acclaim and several well known public figures such as Bing Crosby, the governors of Michigan and Wisconsin, the Dorsey Orchestra, and the Smothers Brothers. Entertainment has continued to run rampant through the Tech's campus during Winter Carnival week, and it is apparent in the talent-packed skits, presented by student groups. But it's the unscheduled entertainment that has been a part of Carnival since its beginning. Pranks include locking the MC of the skit competition off stage and disengaging a skit's scenery immediately before its debut are recorded in the comical annals of the carnival's history. There was also the year that two queen candidates arrived in identical gowns. Score one for the year's queen chairman.

Other acts are provided by the students at Tech who put their world on stage as they show the visitors how they live around campus. The spotlight travels from act to act, starring members of the Tech community. The audience of visitors can create a mind full of memories to take back with them.

Every circus has its clowns and many Winter Carnival events have had many jokers to keep everyone laughing. This year's Carnival will prove to be no different than the rest. Clowns will be seen everywhere, but the clowns are students who have dedicated time and energy into making Carnival a special occasion for all to experience it. It is this dedication throughout the year that has made Winter Carnival Tech's most memorable and proudest tradition.



Pictorial photos/Dave Strang



Snow statue building was added to the Carnival's festivities in 1936. (Top Left) - Hours of sculpting are incorporated into each icy creation. (Left) - Teamwork is the name of the game in statue building and in all aspects of the carnival.



(Left) - Authentic sleigh rides tour campus in true Carnival style. (Below Right) Anything goes, even electric irons, when putting the finishing touches on a snow statue. (Bottom) Dogsled riders prepare for a quick trip through the snow with tape deck to provide music to travel by.



Pictorial photos/Dave Strang





World's Largest Lodging Chain

BEST WESTERN *Copper Crown Motel*

Indoor Pool

Saunas

US 41, Midtown

Hancock, Michigan 49930

Call Toll Free
(800)528-1234

(906) 482-6111

Worldwide Traveler

No matter, if you're
travelling to the ends
of the earth;
make your travel
arrangements with
ease with us in

Downtown
Houghton

**PENINSULA
TRAVEL SERVICE LTD**

708 Sheldon HOUGHTON

Dale's Flower Shop

Downtown Houghton
505 Sheldon Ave

482-3911



- ★ plants
- ★ boutonnieres
- ★ corsages
- ★ fresh and silk arrangements



study

FORESTRY *WHERE THE TREES ARE* at **Michigan Tech** amid the **Upper Peninsula's** **Beautiful Forestlands** **Fields of Study:**

Forest Science

Forest Engineering

Wood Engineering

Land Surveying



GOODMAN TRAVEL AGENCY



PERSONALIZED VACATION SERVICES

OUR SERVICES INCLUDE ...

AIR → DOMESTIC & INTERNATIONAL
AMTRAK • HOTELS • CAR RENTALS • CRUISES
TOURS • OVERSEAS SHIPPING • GROUPS • BUS

906-482-1020

TOLL FREE U.P. WATS

1-800-562-7628

NO CHARGE FOR OUR SERVICES

806 SHELDEN AVE., P.O. BOX 7, HOUGHTON, MI 49931-0007

MON-FRI 8:30 AM-5:00 PM SAT 10:00 AM-2:00 PM

**THANK YOU FOR
YOUR BUSINESS!**

From

Houghton Service and U.P. Oil Co.



U.P. OIL COMPANY
119 Rear Front St.
Hancock, M.I
482-5440

HOUGHTON SERVICE
Franklin Square
Houghton, M.I
482-6600

**STAY TUNED
FOR HUSKIE
SPORTS**



And Winter Carnival Activities
On The ROCKIN' BEST... **Z-93**

Best Wishes For
WINTER CARNIVAL !!!
MONT RIPLEY

Have A Great Time!

SKI HILL



**WELCOME
TECH FAMILIES
AND FRIENDS**



NOW OPEN YEAR ROUND!

**FRIENDLY, COMFORTABLE, CONVENIENT
& REASONABLE ACCOMMODATIONS**

CONTINENTAL BREAKFAST • SAUNA
DIRECT DIAL PHONES • CABLE TV

ON U.S. 41, 2 MILES SOUTH OF TECH

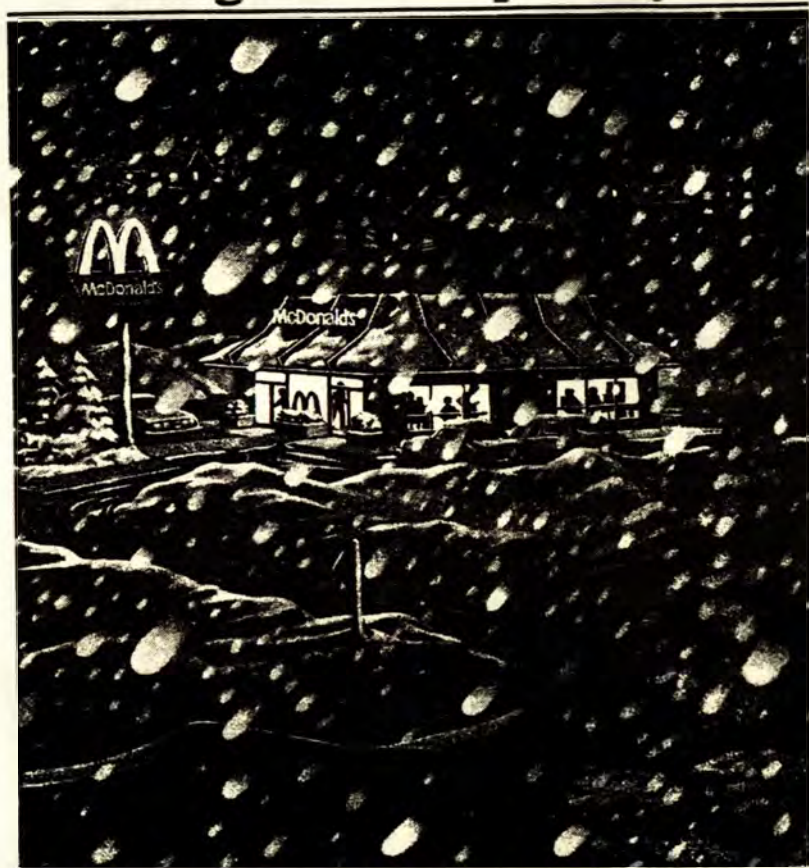


482 - 5351



Your Hosts: Paul & Bev Mayer

We've got a warm spot for you.



If you've got that sinking feeling that this winter may never end. Cheer Up!

Come in out of the cold and into McDonald's. We promise you'll get great hot food, a little extra tender loving care. And lots of warm sunny smiles.

Because, this winter, we've got a warm spot for you.

*You deserve
a break today.*

DownTown Houghton



WINTER CARNIVAL QUEEN CANDIDATES

1983



Pictorial photo/Dave Str



**JULIE
ADAMSON**

Junior in Chemical
Engineering
Sponsored by American
Institute of Chemical Engineers
and American
Chemical Society



**KIRSTEN
BURNETT**

Freshman in Metallurgical
Engineering
Sponsored by Grand
Central Station



**LESLIE
BUBLIN**

Junior in Metallurgical
Engineering
Sponsored by Lambda
Chi Alpha



**CHERYL
COURCHESNE**

Freshman in Engineering
Undeclared
Sponsored by Phrozen
Phifth



**JULIE
FREAM**

Senior in Chemical
Engineering
Sponsored by Theta Chi
Epsilon



**THERESE
MOSHER**

Junior in Marketing
Sponsored by Phi Gamma
Nu Professional Business
Fraternity



**GAYE
GILLIS**

Sophomore in Applied
Physics
Sponsored by Kappa
Delta Psi



**CHERYL
QUANTZ**

Junior in Electrical
Engineering
Sponsored by St. Albert the
Great Student Parish



**JANET
MARCHESI**

Junior in Medical
Technology
Sponsored by Alpha
Phi Omega



**LAUREL
TULGETSKE**

Junior in Medical
Technology
Sponsored by Alpha
Delta Alpha



Pictorial photos/Dave



(Top and Left) - Taking us on a journey through classical, country, and contemporary styles, Julie Adamson fiddled her way into all our hearts. Her hand-clapping and tapping tunes were pieced together in a collection appropriately titled 'Fancy Fidd'. (Above) - Lorraine Card Nara, the 1982 Michigan Tech Winter Carnival Queen, followed last year's performance of an American lost and confused in Paris with a similar. Amusing and witty, Lorraine gave the audience a small picture of her time at the University of Paris, Sorbonne where she studied recently.



Pictorial photo/Earl Mullins

(Above and Right) - Sophomore Gaye Gillis entices the audience to the warm, inviting beaches of Hawaii with her hula dance titled "Rock a Hula." Gayle demonstrated her dancing ability and charm with the fluid arm and hand gestures which she has practiced since her early teens when she first began taking hula lessons. (Above Right) - One of the many "undercover" celebrities of Winter Carnival is this technician from Sound and Lighting Services. These dedicated souls busily prepare all the necessary details for the week's stage events (such as the Queen Coronation and Stage Revue) so that everything looks and sounds great. This is only a small tribute to those uncelebrated people who work so hard and get so little in return. Thanks!



Pictorial photo/Dave Strang



Pictorial photo/Dave Strang

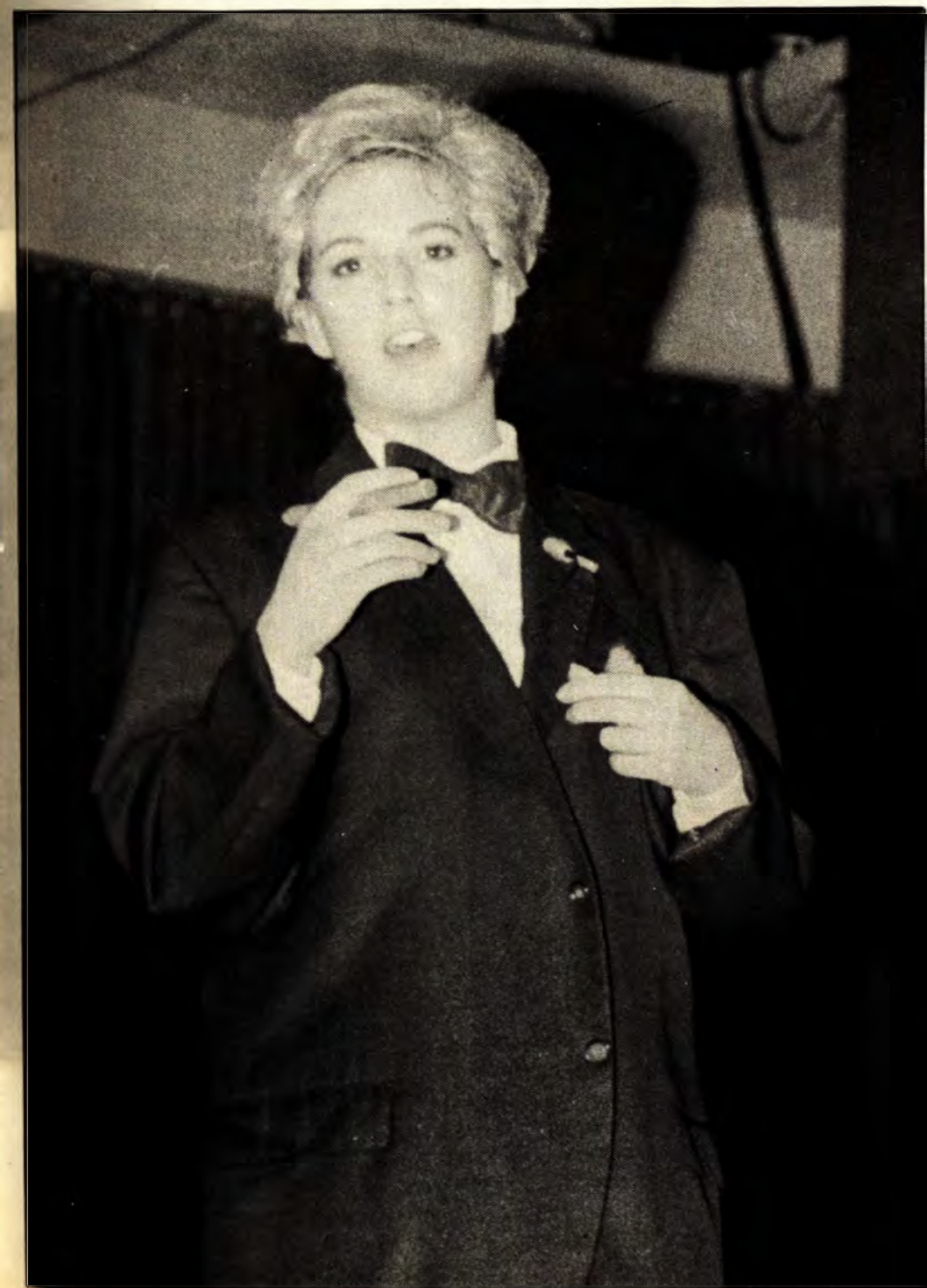


"ET -- Ever Tumbling" was the talent offered by Leslie Bublin, a junior in metallurgical engineering. Set to the theme from "E.T.", Leslie did a floor exercise routine of gymnastics and dance.





Pictorial photos/Dave Strang



(Top) - "A Cartune Caper," a collection of three musical pieces from **Peanuts**, **The Pink Panther**, and **Annie** was Laurel Tulgetske's talent presentation. Laurel went from piano to saxophone to flute as she showed her musical ability. (Above and Left) - Cheryl Courchesne did a humorous excerpt from Hal Holbrook's **Mark Twain Tonight**, a monologue of 'advice' for his 'dear young friends.'



Pictorial photos/Earl Mullins



"Bach and Bop," the talent persentation by Theresa Mosher, combined two entirely different music styles. Theresa first showed the audience her keyboard talent with a selection by Bach. She then sang "The Beetle Bailey Bop," a light, peppy tune which she wrote herself and performed without accompaniment.



Cheryl Quantz sings and dances her way to Broadway with a fine selection of show tunes. Titled "Faces on Broadway," Cheryl performed pieces from such classics and new hits as *The King and I* and *A Chorus Line*.



Pictorial photos/Dave Strang





Pictorial photos/Dave Strang



(Above Right) - Janet Marchesi, a junior in medical technology, sang the theme from the movie "Ice Castles" entitled "Through the Eyes of Love" for her part of the Queen's Talent Competition. (Above Left) - Julie Fream, a senior in chemical engineering, opened the Queen's talent competition with an upbeat rendition of a classical piece normally known as "The Flight of the Bumblebee." Julie's piano variation was titled "Bumble Boogie." (Right) - Kirsten Burnett flowed through her piano selection "Rhapsody of the Keys" a combination of two Russian Preludes which she put together herself.



Pictorial photos/Dave Strang



(Above Left) - Master of Ceremonies Robert Jones did a fine job keeping the audience laughing throughout the queen's pageant. (Above Right) - Members of the audio and lighting crew organized the technical aspect of the contest. (Left) - Queen candidates and their escorts mingle in the lobby of Hancock High School before the activities begin.



Pictorial photo/Scott Heckel

Julie Adamson crowned queen

BY TODD STONE
PICTORIAL WRITER

A content but somewhat uneasy crowd impatiently awaited Master of Ceremonies, Robert Jones' upcoming announcement on Monday, January 31. The audience was content, for they had just thoroughly enjoyed watching ten Michigan Tech Coeds sing, dance and play their hearts out, but a heavy cloud of nervous uneasiness hung in the air of Hancock High School's auditorium as the audience awaited the coronation of the 1983 MTU Winter Carnival Queen.

The people in their seats felt for the girls. They knew the contestants had been through a lot in the past two months. With interviews, a student vote and practice, practice for this night's talent event, the girls had concentrated almost solely on the queen quest since Thanksgiving. Making his way toward the announcement of Winter Carnival Queen, Jones proclaimed Cheryl Quantz as Miss Congeniality. This honor was bestowed to Miss Quantz by popular vote of her fellow contestants for being the most friendly and easiest to get to know of the girls.

Next, Jones called second and first runners up and finally the Queen. "The second runner up, winner of an all expense paid trip to Pinconning where she will reign over the cheese and ice fishing contest . . ." began Jones adding some humor to take the edge off the nervousness that had grown, ". . . is Leslie Bublin." After a pause he continued. "The first runner up is Miss Therese Mosher." There was only one award left, one more bundle of roses to give, and one crown to wear. Jones wasted little time with the final announcement, "The 1983 Winter Carnival Queen, who will represent this University at hockey games throughout the Western Hemisphere, is Julie Adamson."

Everyone felt better but no one felt quite as good as Julie Adamson while the copper crown was placed on the head of the new queen. She will now reign over the events of Winter Carnival but her responsibilities do not end there. Miss Adamson will be a part of a traditional trade between Michigan Tech and Georgia Tech. The swap consists of one MTU Winter Carnival Queen and 100 snowballs in return for one Georgia Tech homecoming Queen. Miss Adamson will find herself on a trip to Georgia some time next fall and MTU will be graced with a southern belle at Winter Carnival.

Julie Adamson has not been running around winning pageants all her life; she has been much too busy for that. Instead, Julie divides her time between her many interests, the main one being music. Miss Adamson studies the violin and teaches the Suzuki violin to children. The Suzuki is a teaching method in which students learn to play by hearing the music. If the manner in which she has taught herself to play is evidence of her teaching success Julie will soon conduct the world's finest. As she played her violin in her talent presentation most of the audience sat, jaws scraping the floor, in utter amazement. Those that were not spell bound began to clap and stomp to the country beat of her tunes which she calls "Fancy Fiddlin'."

Life is not always a song and dance for our new queen. Academics rank right up there. Excellence in academics is not something that seems to come with much difficulty to Julie who is a past valedictorian of Marquette High School. Here at Tech Julie is close to achieving her Chemical Engineering degree and is eyeing a possible future in the medicine world as a doctor.

After the books are done and the violin played, Julie heads for the woods for some cross country skiing. Julie also enjoys hockey games and an occasional episode of "Mash".

The conquest is complete for Julie Adamson. All her hard work has paid off. The obvious question left unanswered seems to be: Are you glad it is finally over? To this Julie answers with a startled face and says, "Are you kidding? It was a lot of fun!"



Pictorial photo/Dave Strang

(Top) - The 1983 Winter Carnival Queen, Julie Adamson. (Above) - Leslie Bublin, 2nd runner up, Julie Adamson, queen, 1st runner up, Therese Mosher.

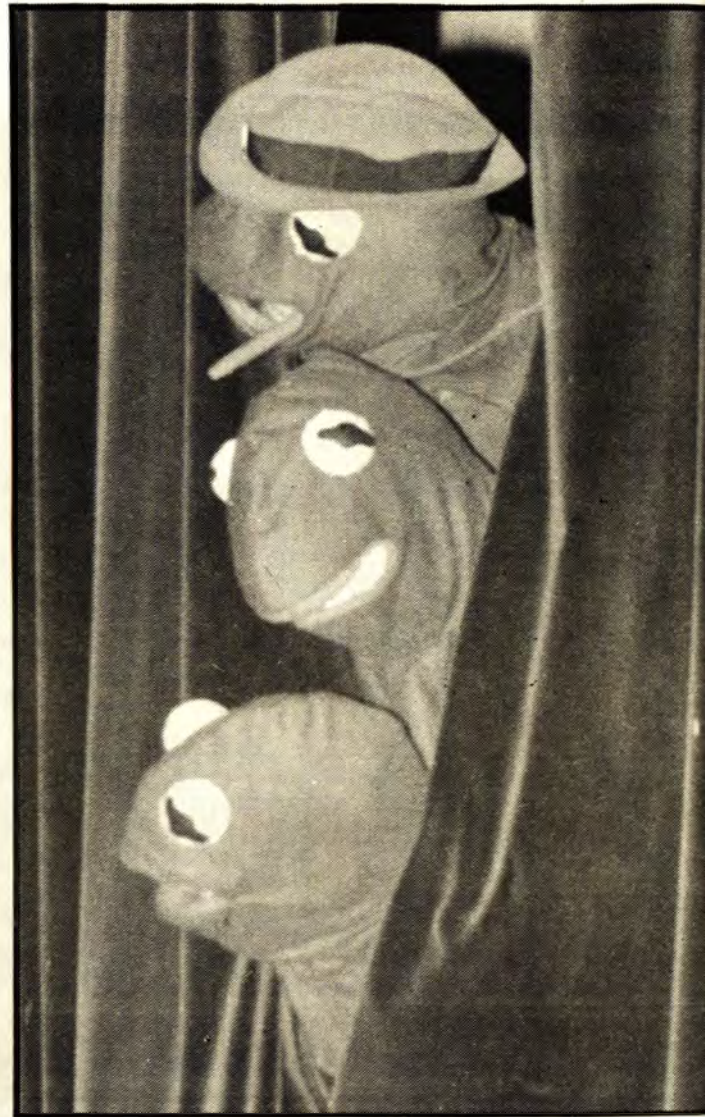
(Left) - Leslie Bublin receives the 2nd runner up position in the queen's competition. (Below) - Dean Harold Meese places the cape on this year's Carnival queen, Julie Adamson. (Below Left) - Last year's queen, Lorraine Card, passes her reign to Adamson. (Below Right) - Therese Mosher receives 1st runner up position in the competition.



Pictorial photos/Dave Strang



Carnival Stage Revue



Pictorial photos/Dave Strang

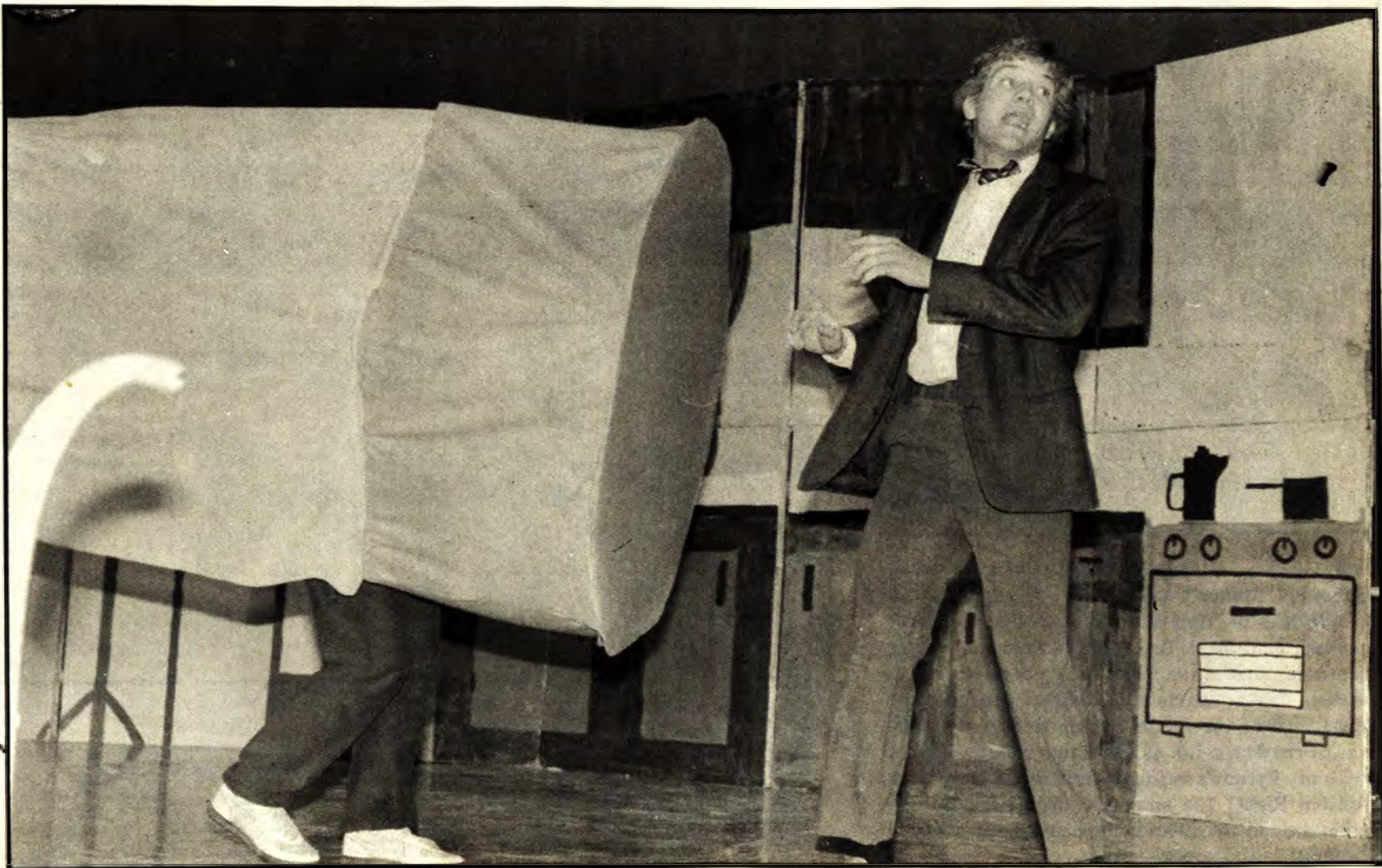


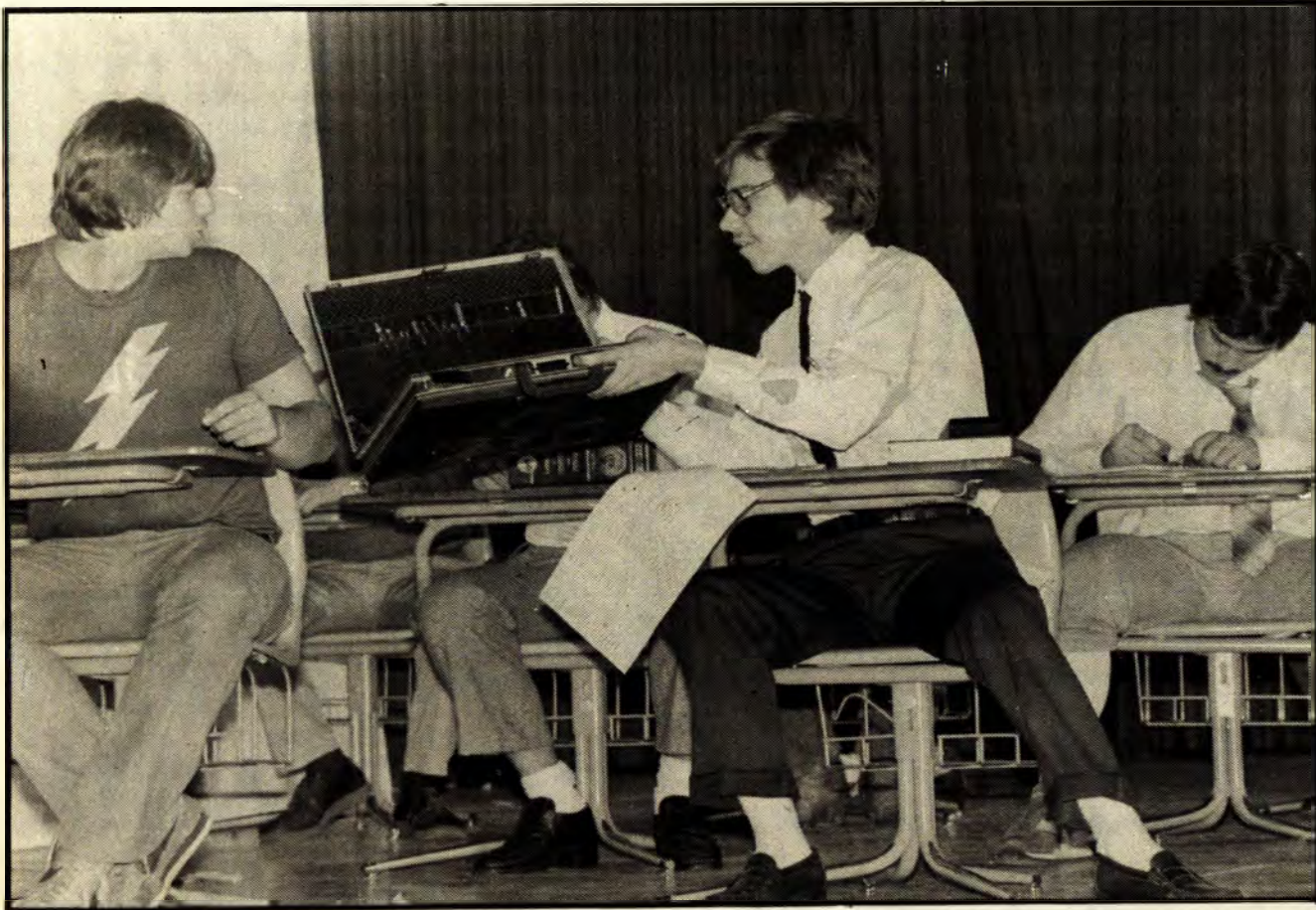


Pictorial photos/Dave Strang

(Above Right) - Two sisters of Alpha Gamma Delta, the only sorority to enter the skit competitions, heartily shake hands in their reproduction of the comic strip "Archie and Friends." (Above Left) - As Dagwood Bumstead, a brother of the Delta Sigma Phi fraternity strolls through a line of character strips, he runs into Lucy who mistakes him for Charlie Brown and yanks the football from beneath him. (Right) Dagwood, watch out! There's a giant eraser approaching to make you disappear from the comic page!

(Opposite Left) - Prince Charming and the beautiful bearded princess portray Phi Kappa Tau's impression of the popular fantasy. (Opposite Right) - The three ugly toads seem to verify the fact that princesses must indeed kiss a lot of toads before they meet their handsome prince. (Left) - The beautiful princess gets down to business as she begins to smooch each amphibian hoping that one will turn into the awaited royalty before she must kiss another.



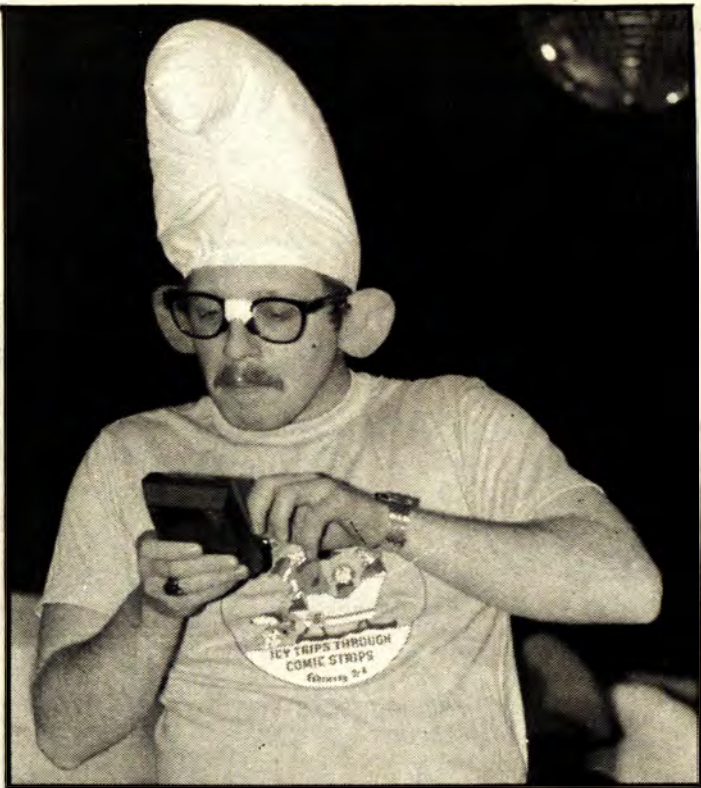


Pictorial photos/Dave Strang



Flash Gordon . . . ahhhhhhhaaaa . . . was the star of Sigma Phi Epsilon's talent skit. (Top Left) - A Sparoid tries his sales pitch for a new line of pencils on Flash Gordon. (Top Right) - Students playing themselves wait in the never ending book store line. (Bottom Left) - Anxious discoverers gaze into the crystal ball of the future hoping to find the location of the Magic Ink as the actors include a spoof on Monty Python's satirical search of the Holy Grail (Bottom Right) The knights of Sigma Phi Epsilon gather around the all-knowing paper mache diety in the skit.

AIChE, ACS, Phi Lambda Upsilon presents its story of "The Smurfs go to College" (Below) - A young Smurf leaves home for college. (Right) - This freshman Smurf learns to use his calculator before his first chemistry exam. (Below Right) - A Smurf dressed for the occasion receives his diploma. (Bottom) - Smurf State University students are transported to school.



Pictorial photos/Dave Strang





(Left) - Tank McNamara, the ace sportscaster, seems to be under pressure in Phi Kappa Theta's "Nort Spews." (Below Left) - A psychologist tries to provide help with ink blot tests. (Below) - Tank becomes hypnotized. (Bottom) - The mafia is caught by the good guys.



Pictorial photos/Dave Strang





Pictorial photos/Dave Strang



(Top Left) - Don Sterling portrays the not so valiant Prince in the Wesley House's version of "Prince Valiant and the Four Seasons." (Above) - Two courageous knights harmonize with Prince Valiant as he brings about the origin of the seasons. (Left) - Valiant adds comedy to the skit's atmosphere with the help of the other stars.



Pictorial photos/Dave Stra...

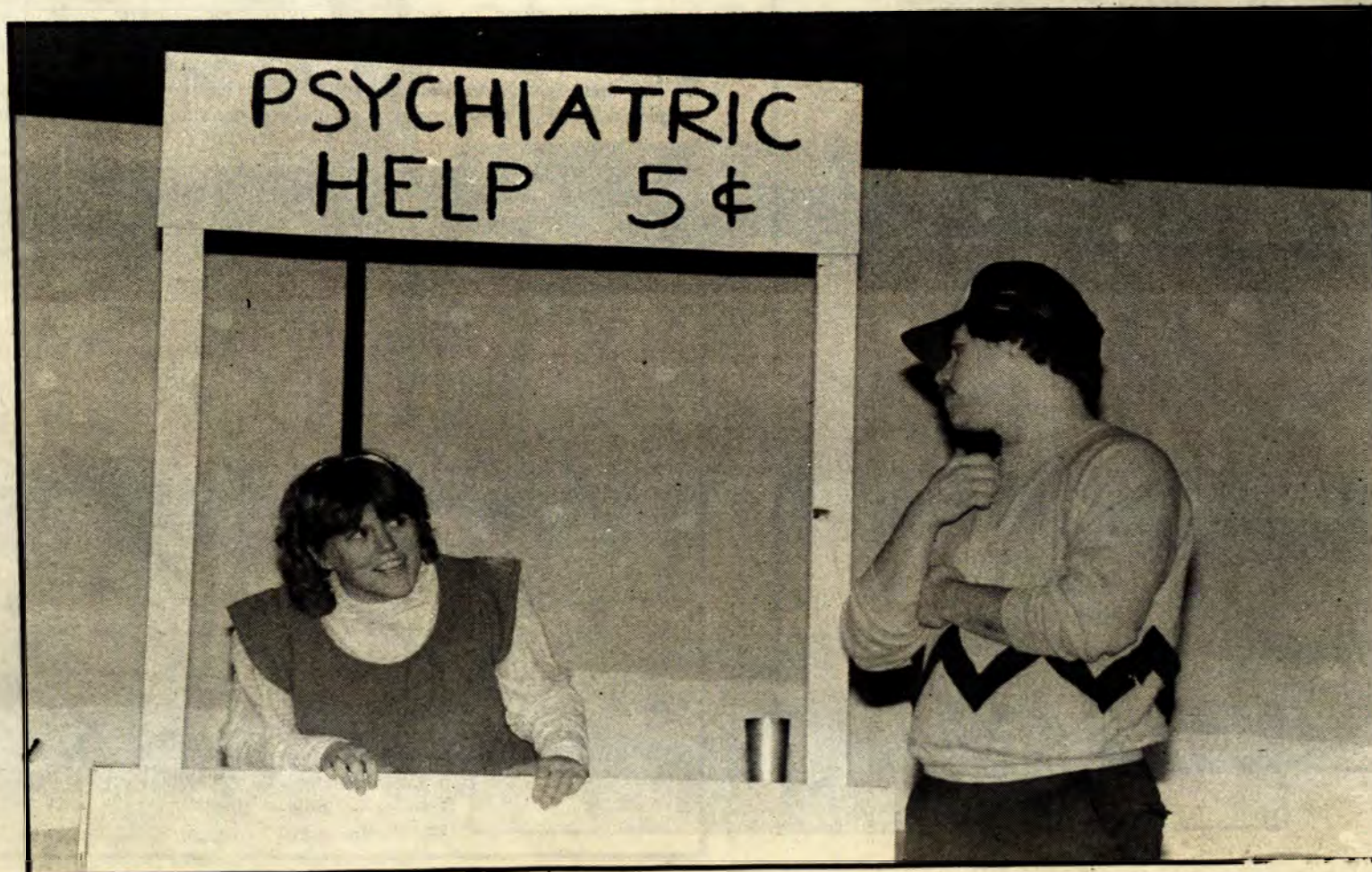


"Can You See the Comics" was Sigma Tau Gamma's entry into this year's skits. (Above Left) - Dennis the Menace is the central character in the skit who is losing faith in his comic book heroes. (Above Right) - The Peanuts characters, Lucy and Schroeder, get ready to restore Dennis' faith. (Left) - As in silent movie placards were used. (Above) - George Jetson is stopped for cosmicly speeding to Dennis' aid.

Douglass Houghton Hall presents "You're No Engineer Charlie Brown."
 (Below) - Snoopy helps Linus through his assignment. (Right) - Pig Pen brings his sloppiness into the technological classroom. (Bottom) - For five cents Lucy is willing to help the bumbling Charlie Brown.



Pictorial photos/Dave Strang





Pictorial photo/Earl Mullins

1st Place Class A

Tau Kappa Epsilon

"Sno Balls O' Fire Maw, Ice Still Ain't Caught One" Here we have the everyday hillbilly life of the Snuffy Smith kin. Paw Smith is snoozin' by his favorite fishin' hole not realizin' that Sheriff Tate is once again trying to catch the dadburn fool by his still. Meanwhile back at the ol' shack, Ma Smith drops her chores to gossip over the fence with her good neighbor, Elvanie, and their lil' youngin Tater crawls off into mischief. Which just goes to show ya, nothin' gets done around there. Two by four and wooden dowels are used for supporting the awning on the house. String and thin wood dowels are used in Snuffy's fishing pole. The coils on the still have string inside of them.



Pictorial photos/Dave Strang





Pictorial photo/Dave Strang

2nd Place Class A

Delta Sigma Phi



Pictorial photos/Earl Mullins

"We Sailed the Ocean for the Wizard's Potion." As we cross the edge of time into yesteryear we find ourselves before the king's castle in the land of Id. From the main tower, the king surveys the scene below him. Hagar, master of the seas, and his "horrible" crew have traversed the icy waters of the north in search of the magical potion and only in the land of Id. The Wizard is just finishing his latest batch of the golden nectar. In the foreground, Sir Rodney, the Wizard, and Lucky Eddy watch as Hagar samples the blend.

Inside the castle, we find the dungeon, the king's throne, and the dining room. In the dungeon are two prisoners under the watchful eye of Turnkey, the guard. Zeke, the prisoner in the confinement cell, tries to escape while Spook, the man in chains, just hangs around. Among the cobwebs lies Bung, the drunken jester, who has found his own batch of wicked water. Several two-by-twos, wooden dowels, rope, and string were used in construction.





Pictorial photos/Dave Strang

3rd Place Class A

Phi Kappa Tau



"Smurf Chillabration" Hidden deep in the wooded hills of Germany lies a secret village of mushroom houses protected by a castle wall and a moat. The tiny Smurfs and one Smurfette are always busy working or playing hard with each other.

The fun-loving Smurfs are seen welcoming the arrival of their new friends from outer space, the Space Smurfs. Led by their bearded leader, Papa Smurf, the celebration proceeds with song, dance, bocce ball and a hearty feast fit for a king.

Ice blocks in the castle wall were cut from Otter Lake and molded together with slush. There are no wooden supports in the figures or structures.

So venture into the world of Smurfs and make some new friends!



Sigma Tau Gamma Winter Carnival Funnies

Pictorial photos/Dave Strang

4th and 5th Place Class A

4th - Sigma Tau Gamma
5th - Sigma Phi Epsilon



Pictorial photo/Earl Mullins



(Top) - "Winter Carnival Funnies" As the early morning sun rises above the snowy horizon, the delivery bag lies awaiting its long journey. We ask you now to take an icy trip through the pages of our funnies and into the bag of laughter of every boy and girl.

Once inside we find the comic strip characters playfully enjoying themselves. With only hours left before they become part of the morning coffee, they get in their last good-byes. Not all is lost though, knowing that their memories will soon melt into the minds of all of their readers and a smile will carry them on.

(Right) - "B.C.'s Icy Florida" B.C. has had a problem for many long wintry years all of his faithful followers hate winter totally; even tears! So Peter Thor had a meeting on where to travel this season the ants Maude and Jake gave no query and of course Fat Broad gave no reason For a MECCA they visioned great greenness with fish for Clumsy Carp to eat B.C. has dreams of swimming, Woman has a bikini that's petite. On and on they shall travel through snow they'll reminisce trips Welcome to this year's Carnival of Icy Trips Through Comic Strips.

Way up north in a
land well hid;
Lived a mysterious man
called The Wizard Of Id;
His master the King, the
tyrant of Id,
Was a man of great temper
which had not a lid;
He cried to the Wizard,
"Do as I bid!"
Build me a place - you
Wizard of Id!"
Down came the snow,
twas a blizzard for Id.
The ice formed a castle.
Behold! The Palace Of Id.
When the work was com-
pleted the King was in
awe,
He was happy indeed with
the palace he saw.
"Well done my friend, it is
glory you've bid.
With glory I knight you
"The Blizzard of Id!"



Pictorial photos/Dave Strang

1st Place Class B

Eden House





Pictorial photos/Dave Strang

(Left) - "Hagar's Husky Horror" On his quest to conquer new lands, Hagar the Horrible comes to Houghton. Awaiting his attack on-shore are two determined defenders of the land, the MTU Husky and the Mama's Boys' Viking. Lucky Iddie stands frozen in terror as Hagar signals the attack with his dowel reinforced sword. Helga and Honi, Hagar's wife and daughter, try to reassure each other and Snert, Hagar's faithful dog, tries to look as menacing as possible against the mighty husky. The Viking boat nears shore under oar power. The oars are made of ice reinforced with wood dowel, and dip into the frigid sea. The dragon head and tail on the ship are reinforced with 2 x 4's. On the rocky shore, the husky growls ferociously as the Viking holds him back with a leash which uses string for support. A few icebergs complete the scene.

2nd and 3rd Place Class B

2nd - Mama's Boys
3rd - Hoton's Heroes



(Left) - "B.C. Ice Age Engineer" The enterprising B.C. fixes a cold stare on Thor, a fellow engineer cruising by on the state of the ice transportation. B.C. has developed his own version of the wheel with the help of his trusty IceBM computer, but he looks a bit dismayed at the sight of his competitor's creation. Perhaps a redesign is in order to get the project "rolling" again. Looking on as Thor rides by is a snake who might well be thinking "Back to the drawing board, B.C."

A two-by-four helps to support Thor, and another two-by-four is used on B.C.'s axis, B.C.'s wheel also uses wood for support.



"A free press is not a privilege but an organic necessity in a great society."

Walter Lippmann
Distinguished American Journalist

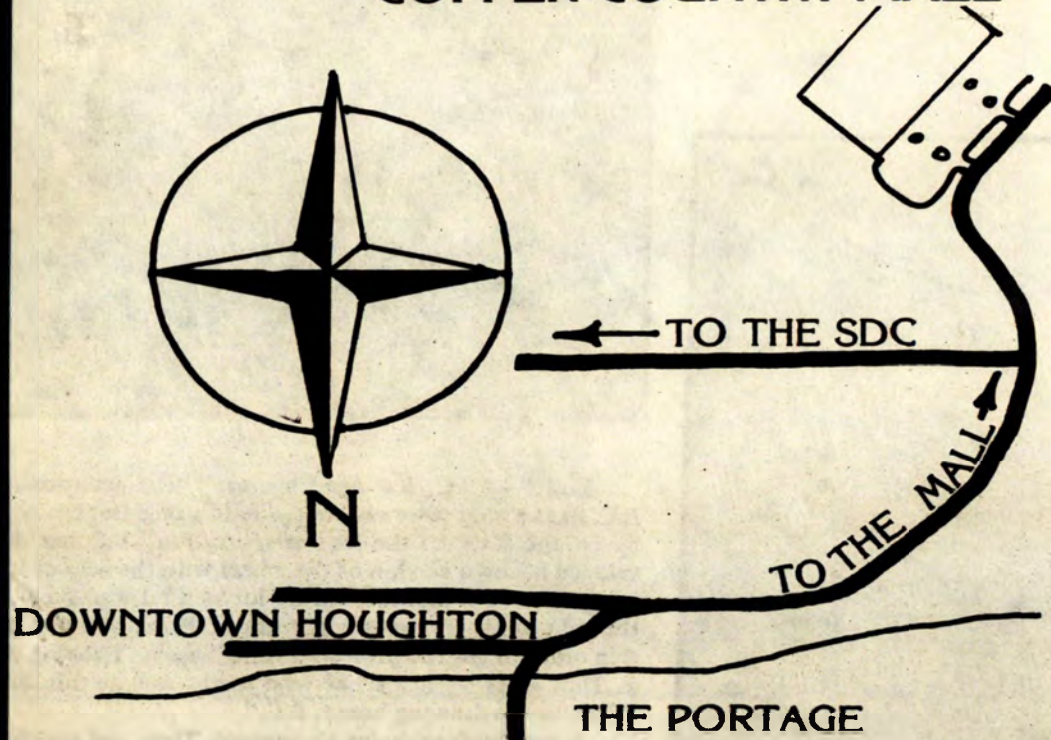
Michigan Tech Lode

Your independent student-produced newspaper

122 Memorial Union, Houghton, MI 49931
(906) 487-2404

Congratulations to everyone who helped make Carnival a success.

COPPER COUNTRY MALL



**24 Stores Open
Nights & Weekends**

"The Copper Country Mall Has It All!"



Mon-Fri	10-9
Sat	10-5
Sun	12-5

M26 & Green Acres Rd. Houghton



Pictorial photo/Dave Strang

Let's enjoy it while we can

Few areas can rival the beauty and awesomeness of Lake Superior in Winter. Watching a winter sunrise or on a clear night watching the northern lights dance amongst the countless stars provides inspiration to any student who takes the time to look.

When on some clear night ten years from now we glance into the night sky and remember, we will be grateful for these moments of pleasure and we will be able to appreciate the sacrifices we made in college.



Pictorial Photo/MTU Photo Services



Pictorial photo/Joë Kirkish
February 4, 1983/LODE Pictorial



Pictorial photo/Dave Strang



Pictorial photo/Dave Strang



The Michigan Tech experience, how many of us would seriously trade it all in for any other? Although most of us complain, sometimes viciously, about how cold it is outside, about how much snow we have, and about how small and unexciting Houghton is, there is the other side of it all which we appreciate more and more the longer we live here.

There is a philosophical argument which claims that pleasure is possible only by way of contrast with suffering. If there is one thing which life at Tech teaches us, it is to appreciate the moments of pleasure. No one appreciates a relaxing weekend more than a Tech student after a week's worth of classes, labs, and tests.

Winter Carnival brings together the bitter cold, the huge snow piles, and the limitless imagination and ingenuity of Tech students to form a final product which is pure excitement.

It is difficult to imagine going to Tech without taking advantage of the winter entertainment and scenery which the Copper Country offers. If you have never been to the Breakers or to Douglass Houghton Falls, or have never been skiing, snow-shoeing, or ice skating, or never worked on a snow statue, you are missing an important part of the Michigan Tech experience-the essence of college life especially if the college is located in an area with as rich a heritage as the Keweenaw Peninsula.



Pictorial Photo/MTU Photo Services



Pictorial photo/Charlie Eshbach



Pictorial photo/Dave Strang



Pictorial photo/Joe Kirkish



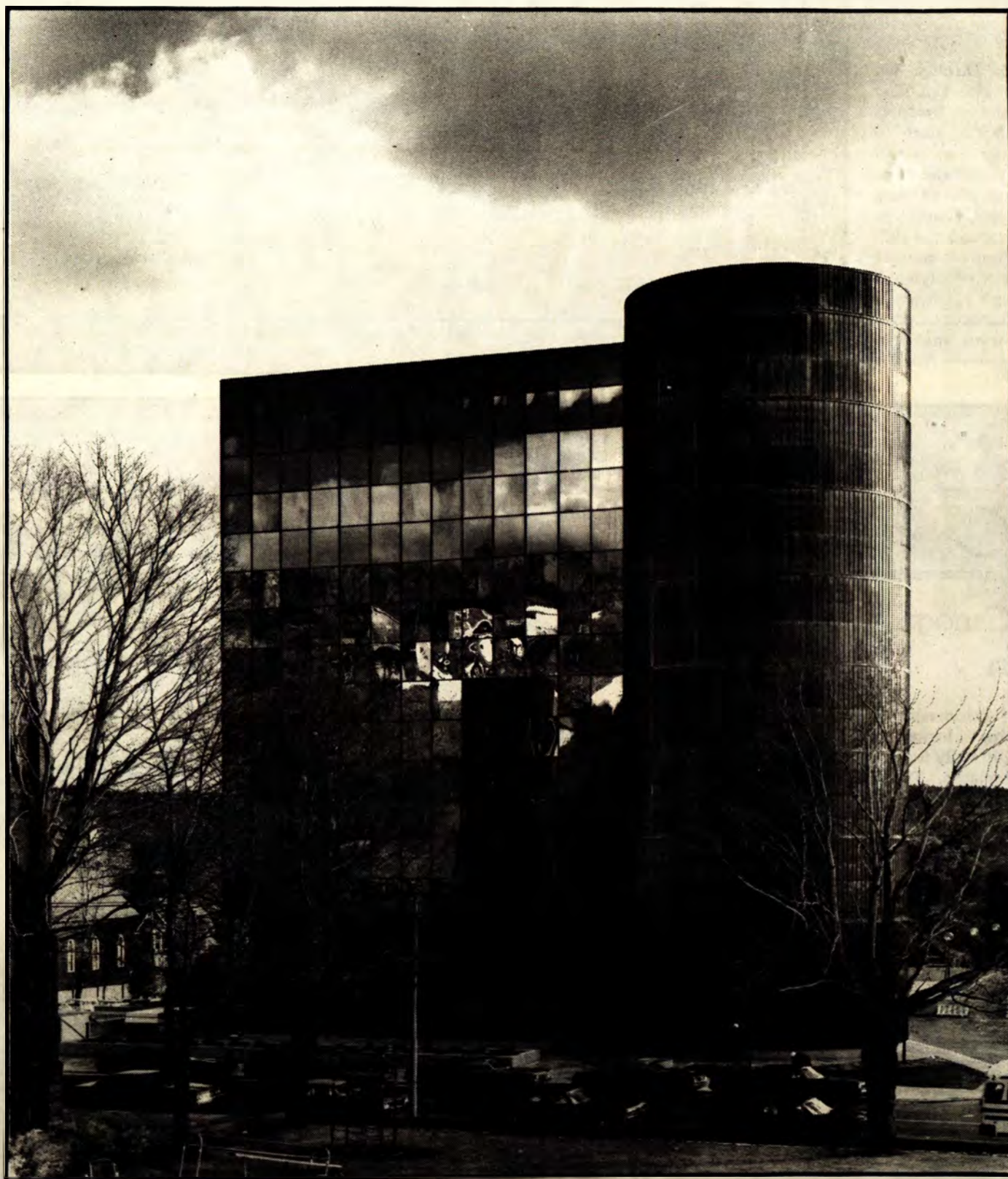
Pictorial photo/Charlie Eshbach



Pictorial photo/Joe Kirkish



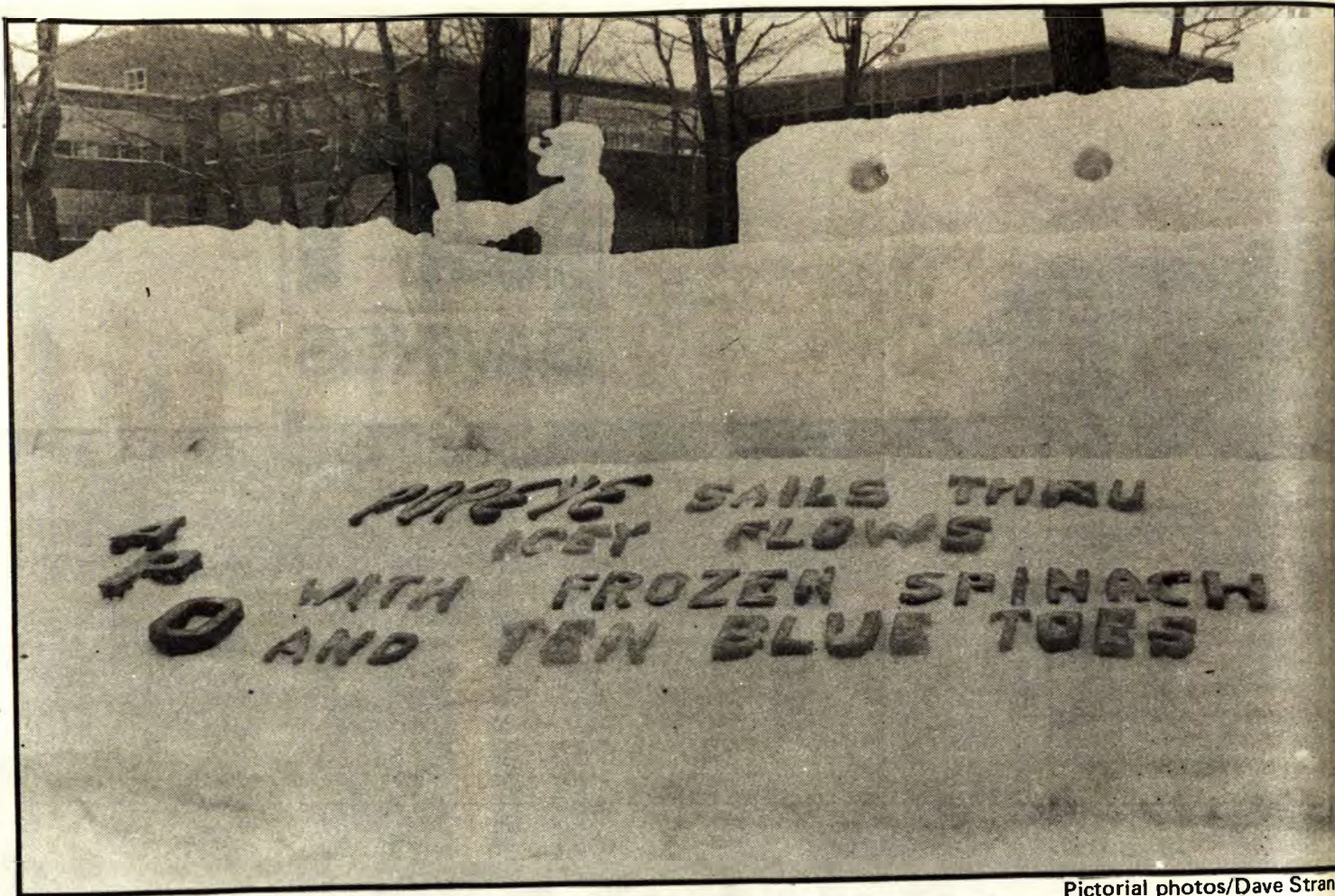
Pictorial photo/Joe Kirkish



Home Office-Hancock, Michigan

Now Over A Billion Dollars Strong

(Right) - "Popeye Sails Through Icy Flows with Frozen Spinach and Ten Blue Toes" Even though Bluto and his brothers have delayed the shipment of spinach to Houghton, Popeye makes sure that it will still arrive in spite of the ice. At the bow, Popeye keeps a sharp eye on Bluto's gang while Olive-Oyl enjoys the sights. Sweet Pea is happy enough to wander around the ship and get into trouble, while Wimpy is content with his hamburger. A piece of plywood supports the roof of the ship's cabin and a small wooden dowel supports Popeye's pipe. String is used to make the ropes that lead to each figure pulling the ship.

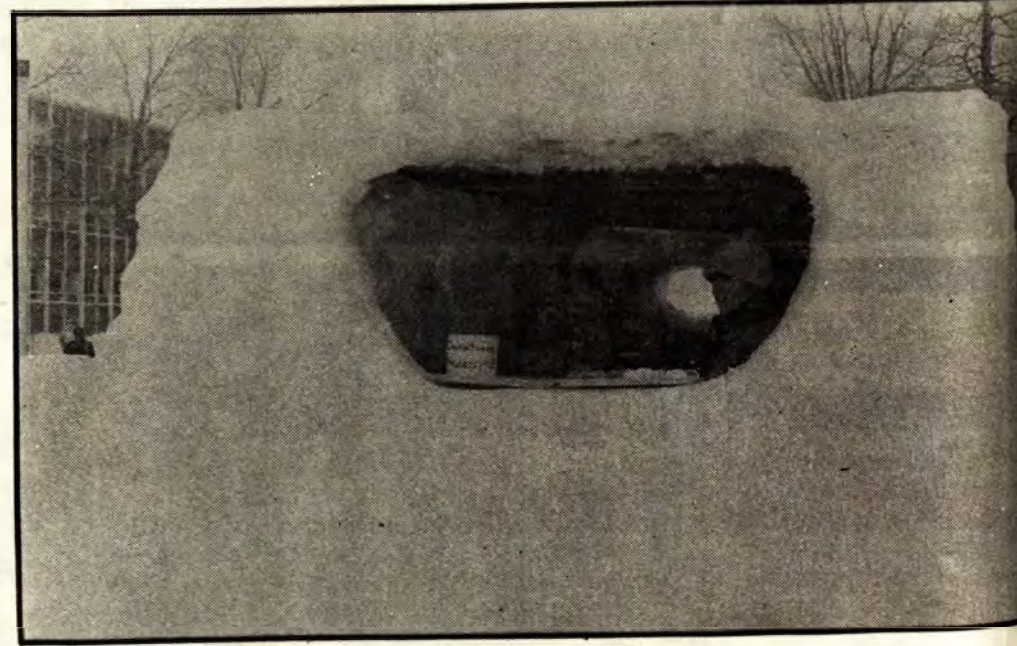


Pictorial photos/Dave Strang

4th and 5th Place Class B

- 4th - Alpha Phi Omega
- 5th - Stagger Inn

(Below) - "Chilly Willy" This lovable little penguin is up to his old tricks again. In this scene his friend the dog is locked out of his master's cabin, obviously cold and hungry. Meanwhile, Chilly Willy is nice and warm sitting on the pot belly stove eating a stack of delicious flapjacks. The table is set with ample supplies of a good day's supplies of a good day's eating and a generous supply of wood is stacked in the corner. When he is done eating and very sleepy a cozy and warm bearskin rug will make a comfortable bed. This scene is constructed solely of snow and ice.



Pictorial photo/Dave Strang



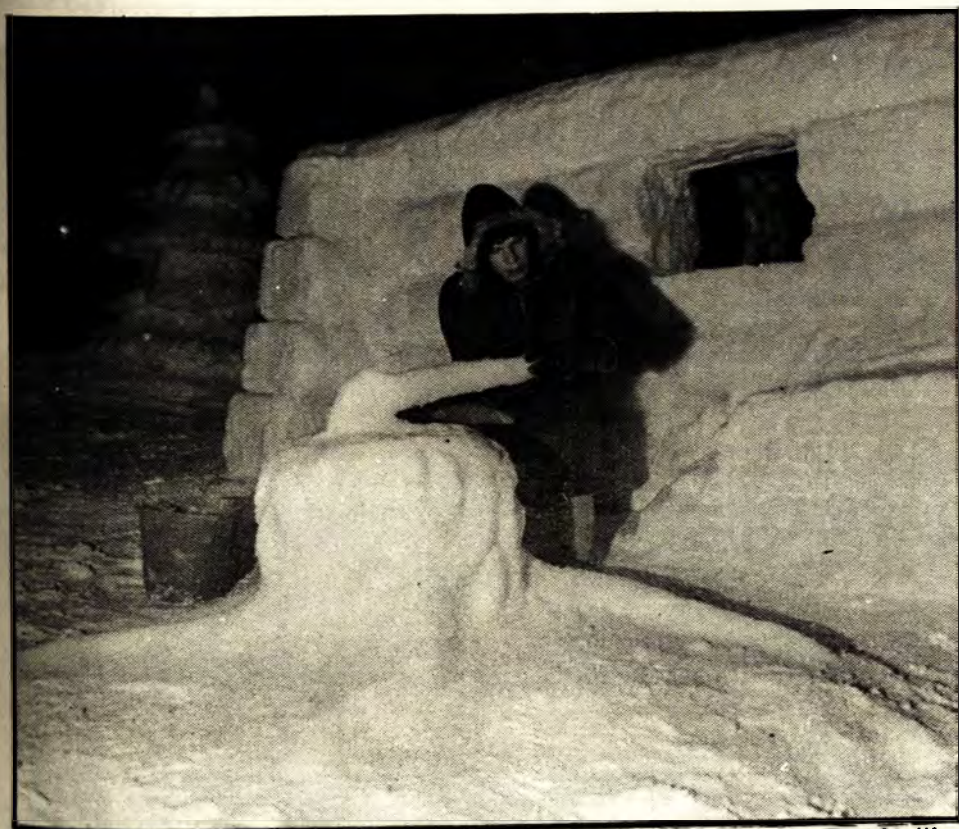
Pictorial photo/Earl Mullin



Pictorial photo/Dave Strang

1st Place Class C

MTU Foresters



Pictorial photos/Earl Mullins



"Chillystone Park" "I don't think the ranger is going to like this Yogi" is BooBoo's remark to another one of Yogi's great ideas. It seems Yogi and BooBoo can't make it through the U.P. winter without a midwinter snack. Yogi knows that there are picnic baskets behind Ranger Smith's door, left by some skiers, and is bound and determined to break the door down. Little do they know who lurks behind the door guarding those picnic baskets. Boy, are they in for a surprise!



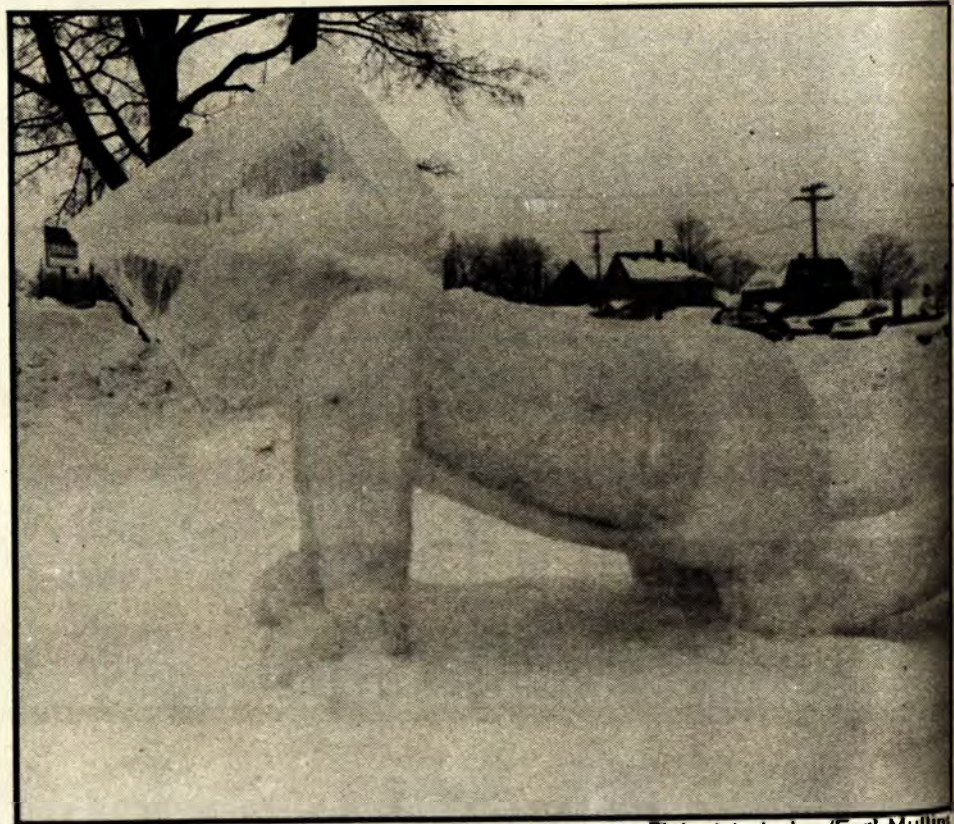
2nd and 3rd Place Class C

2nd - Wesley House

3rd - St. Albert the Great

(Above and Right) - "Being Cold" The men of Wesley House present for your enjoyment their interpretation of the dawn of the Ice Age in B.C. land. Thor is proud of his new invention - the snow tire! Peter the headshrinker is counseling the bird concerning his reluctance to leave his friend, the turtle, and fly south for the winter. Much to his chagrin, the anteater finds his tongue frozen solid to the caption, allowing the ants to roam free until spring thaw. Winter fish watching presents some unique difficulties for Clumsy Carp, and the long winter nights provide the dinosaur with some much needed beauty rest. Small wood dowels support the chisels, hammers and pen and the ants include pipe-cleaners.

(Below) - "The Blizzard of Id" It's a real winter festival in the snowy land of Id, as the King has come to cheer his favorite hockey Husky onto a chilling victory! It looks as though the Husky already has the game on ice as he unleashes a ferocious blizzard of pucks. The dispirited Bulldog is helpless against the Husky's onslaught, for the Wizard has cast a bit of his wintry magic on the Bulldog to freeze him in his place. A 4 x 4 is used for structural support in the arm of the catapult.



Pictorial photos/Earl Mullins



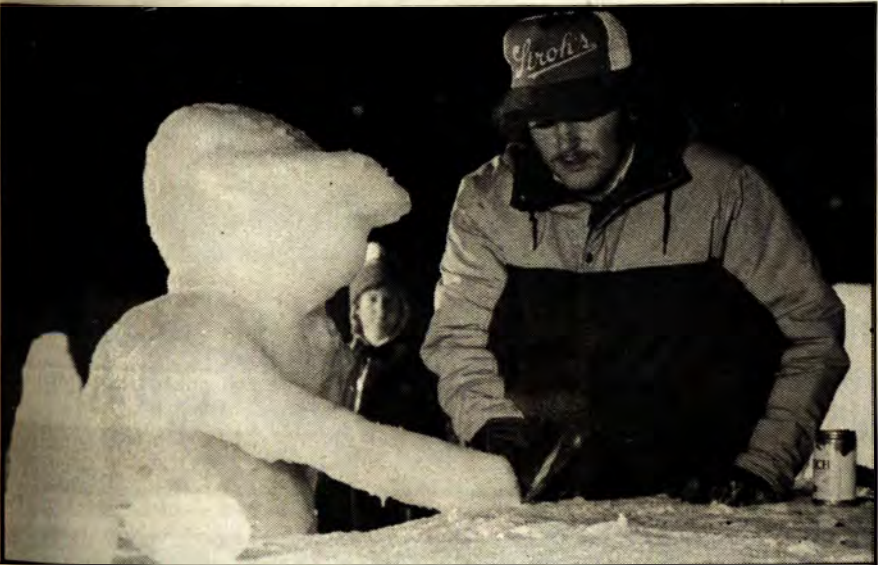


Pictorial photo/Earl Mullins

(Above) - "Charlie Brown's Chem-Ice-Try Catastrophe" Charlie Brown has been known to fail at everything that he attempts. His chemistry experiments are no exception. In his haste to be on his way home this wintry afternoon, Charlie Brown instructed his lab partners, Lucy, Linus and Sally, to save time by using a bunsen burner instead of a hot water bath to heat their ether solutions. He completely forgot to consider safety, ignoring all signs. "Ether in Use, No Open Flames in Lab." Instantly, upon striking the match, "Boom!"

4th and 5th Place Class C

4th - AlChe/ACS/PLU
5th - Unquenchables



Pictorial photos/Dave Strang

(Below and Left) - "Icy Sips at the Comic Strip" The Comic Strip Lounge is a favorite hangout for many popular comic characters. The Comic Strip Lounge, with Superman as the bartender, Wonder Woman as a waitress, and the Hulk as the bouncer, attract a variety of characters. Doonesberry and Andy Capp are regulars at the Strip's happy hour (always found belly-up-to-the-bar) with Batman and Robin stopping in for frozen daiquiri, all the way from Gotham City. Charlie Brown stops in for an old fashioned to warm up while walking Snoopy in the icy weather. Hagar also drops in, from the ninth century, for a little rye whiskey to satisfy his Viking taste. The Comic Strip Lounge offers the comfortable, private atmosphere that many famous characters enjoy.





1st and 2nd Place Class D

1st - Alpha Sigma Tau

2nd - Alpha Gamma Delta

(Top) - "Richie Rich's Frozen Forest" Whenever Richie Rich is around, everything comes up . . . Money! in "Richie Rich's Frozen Forest," designed and built by Alpha Sigma Tau sorority, this is especially evident. Richie is trying to coax his dog, Dollar, across a moneyland stream with a "dollar-bond!" Around both Richie and Dollar, you can see the varied frozen forest shrubbery . . . Dollar trees, coin shrubs, and dollar-bill bushes.

(Below and Right) - "Family Circice" The Family Circus members now come to life before your eyes as they skate around on their homemade rink. Dad clears the snow off in the background as mom relaxes on a log and enjoys a steaming cup of cocoa. Aspiring figure skating star Dolly tries her hand at a balancing act while the family dog struggles to stand on all fours. Completing the scene was P.J. and Jeff, the youngest members of the family, who are sprawling on the ice after a spectacular collision; while the older "more mature" Billy skates away in disgust.

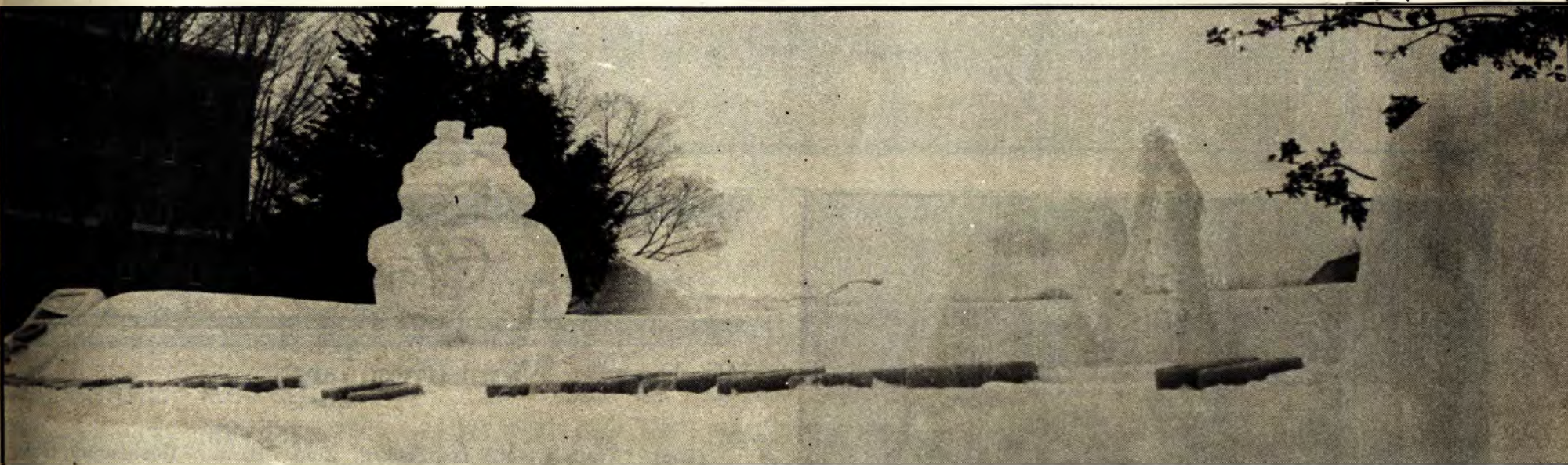


Pictorial photos/Earl Mullins

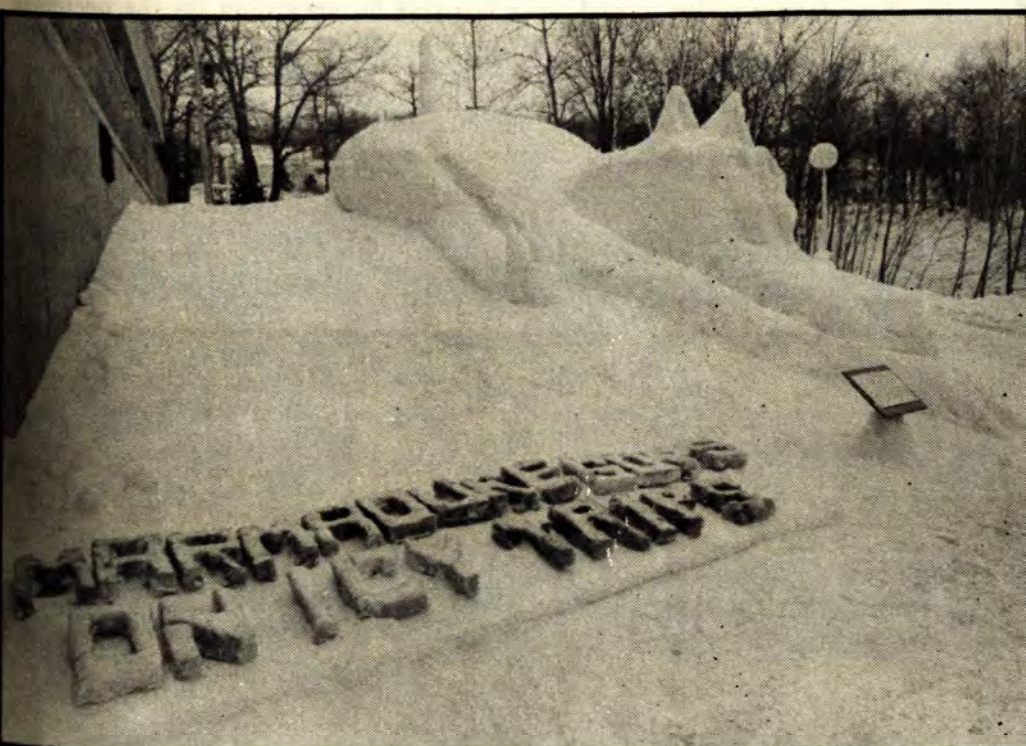




Pictorial photo/Dave Strang



Pictorial photo/Earl Mullins



Pictorial photo/Dave Strang

(Above) - "Marmaduke Slips on Icy Trips" Everyone's favorite canine comic strip hero, Marmaduke, finds out what winter is like at MTU. As every freshman who has lived in Coed Hall knows, winter can be painful when you travel down Fanny Hill. Here Marmaduke, with West Coed Hall in the background, on his way to an eight o'clock class on campus, loses his footing and slides down Fanny Hill - leaving a trail of paw marks etched in the ice in his path. This statue is made entirely of snow.

3rd, 4th, and 5th Place Class D

3rd - Delta Zeta

4th - Theta Chi Epsilon

5th - Rainbow's End

(Top) - "Smurf, Puck, Score" The pressure is building in Smurfland as the Smurfs skate to a victory on home ice during the action packed hockey game during Winter Carnival activities.

The crowd consisting of Smurfs enjoying the winter weather and little animals catching a peek at the action, continue to cheer on the Smurf Huskies as they battle their way to victory against Ferris State.

The big hockey game is located in the middle of Smurfland on their frozen ice rink. The Smurf replicas dart back and forth across the ice faking the opponents, and driving the puck to the net where they shoot and score.

The Smurfs will be three feet high and approximately 1½ feet wide. The net on the hockey goal is made of rope and string and then frozen with ice and water.

(Middle) - "Goalfield . . . Glides to Victory" Our ever present friend "Goalfield" takes to the ice as a Michigan Tech Husky getting set to glide to victory. His sidekick Odie represents the courageous (yet greatly outclassed) opposition being tripped up by Goalfield's slick maneuvers.

In keeping with Winter Carnival tradition, the main figures are constructed of ice and snow, while the goal makes use of wooden dowels and string for light support.



Pictorial photos/Dave Strang

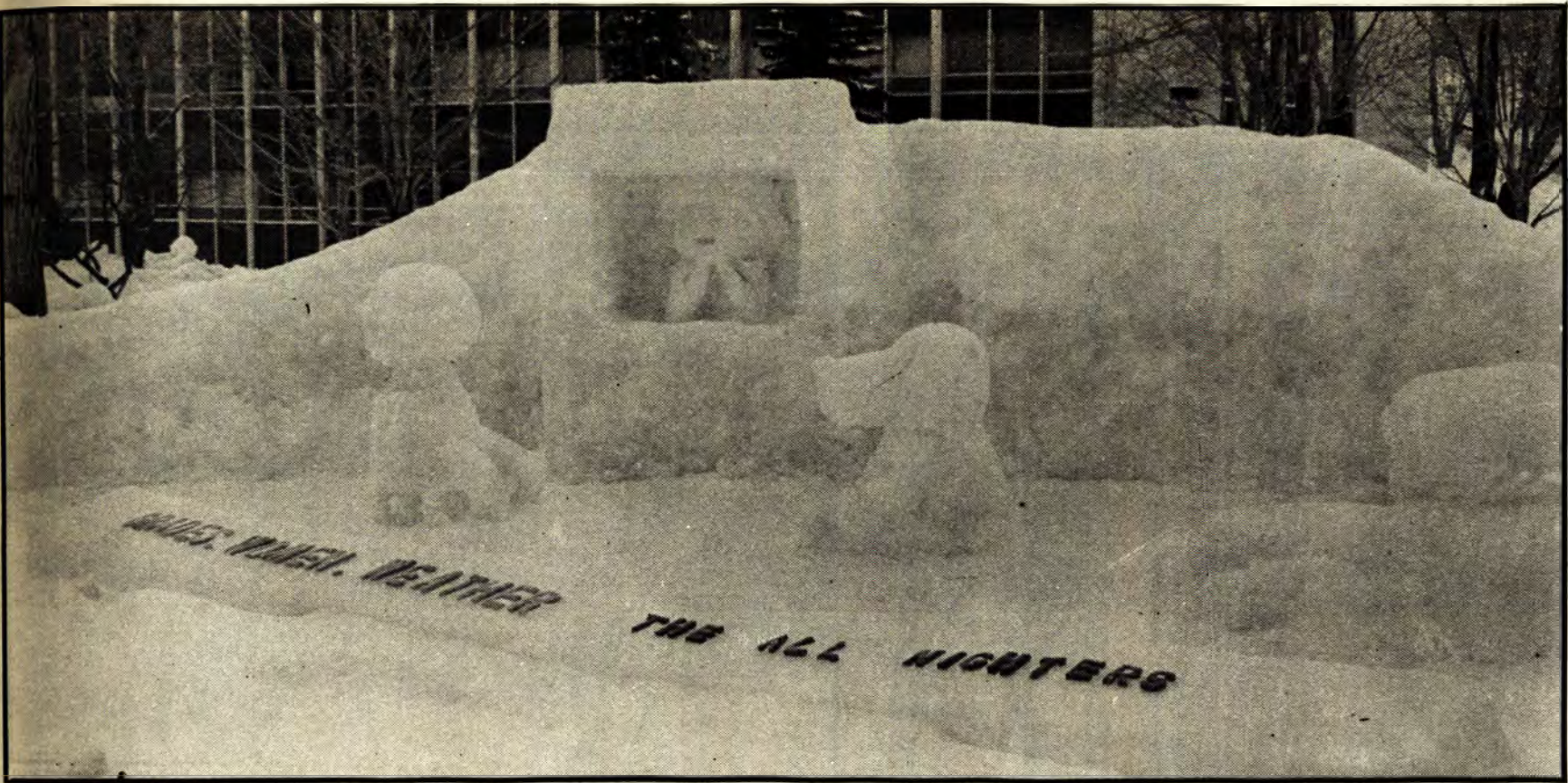


Class E

Wednesday Night Irregulars

(Top) - "That's a N-ICE tan, Zonker" Zonker Harris of Doonesbury, taking a break from studying for his final exam in Psycho-Ceramice 101, is lying back in his chaise lounge trying to soak up a few rays in preparation for the upcoming prestigious George Hamilton International Invitational Tanning Competition. He is splendidly attired in his Dior shorts and Foster Grants. Why is he so pale? No one told Zonker that the sun never shines in Houghton in the winter. But no matter, Zonker never was one to worry about such minor details. His surrogate sun, a four foot snowflake, keeps him company as he soaks up the only things available, the snow and cold.





Pictorial photo/Dave Strang

Grades, Women, Weather

1st Place One-Nighters

Off-campus - All-Nighter
On-campus - BYOB

Winnie the Pooh . . . and PPPenguins too



Pictorial photo/Earl Mullins



Pictorial photo/Earl Mullins



Pictorial photos/Dave Strang

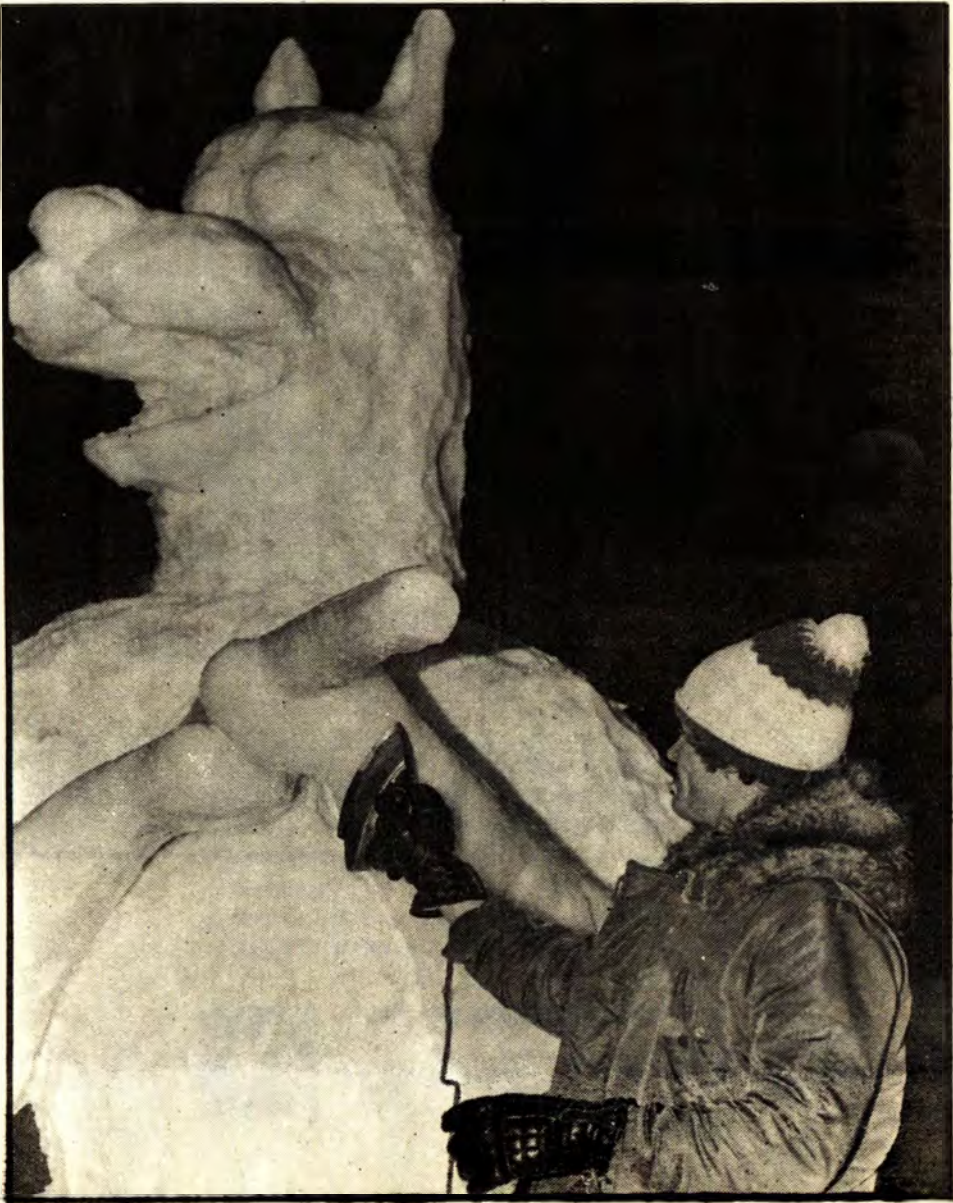




Pictorial photo/Earl Mullins



Pictorial photos/Dave Strang

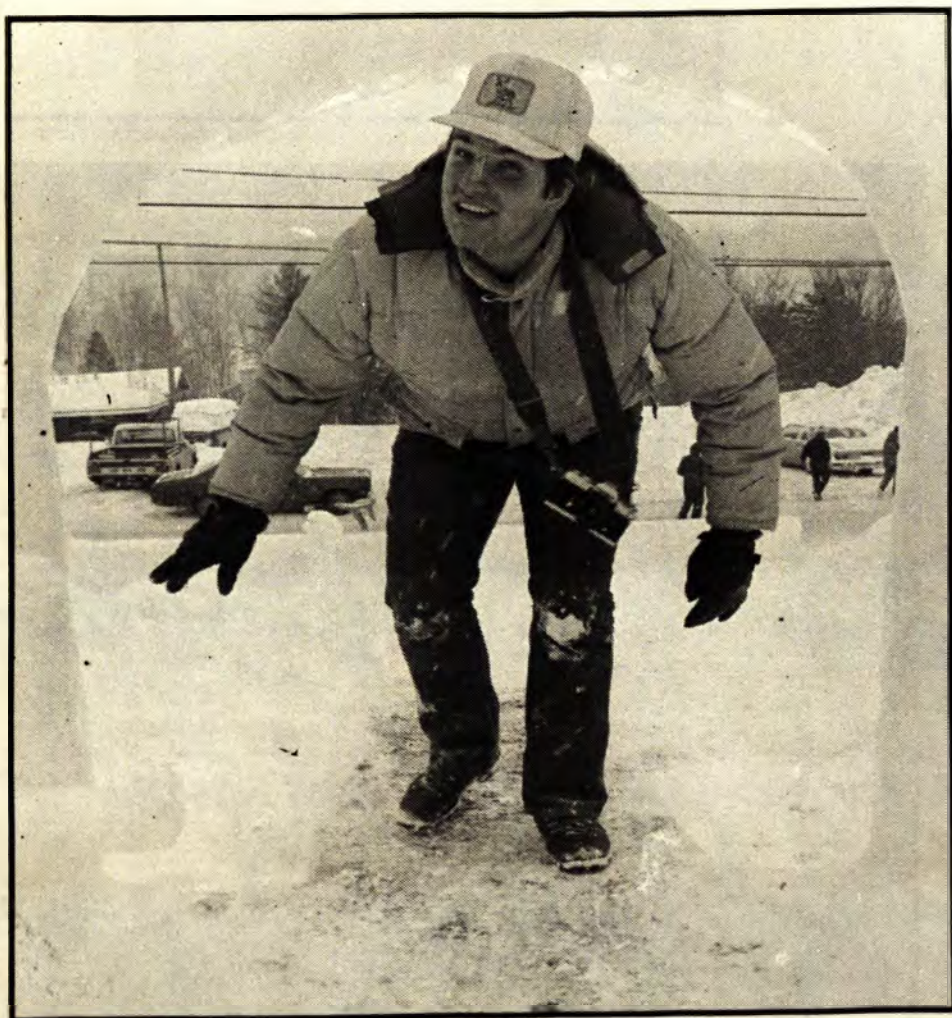




Pictorial photo/Dave Strang



Pictorial photo/Earl Mullins



Earl Mullins



Pictorial photo/Earl Mullins



Pictorial photo/Dave Strang

"The Fight For Life"

A passerby noticed a startling sentence on a signboard. It read: "Remember That Everyone You Meet Is Fighting For His Life."

The people you encounter, or work with, are seldom as poised and successful as they appear to be. They are hesitant defeated strugglers like yourself.

Through the years Dopey has been the most beloved of Walt Disney's immortal "Seven Dwarfs". Why? Because we see ourselves in Dopey's clumsiness, his eagerness to do the right thing, his rejection by others, and his struggle to take his rightful place with his companions.

Every person has moments when he feels unwanted and defeated. Louis

L'Amour is a successful author. His books about the American West have sold millions of copies. Yet L'Amour did not easily win recognition. He said, "If you get knocked down you have to get up again. I was knocked down by two hundred straight rejections before I sold a single word."

The fight for life goes on in good times as in bad, in youth as in age, in business as in social life. Everyone you meet is engaged in some sort of battle for survival.

It is the manner in which we deal with adversity that determines character. Winston Churchill at the age of eighty-nine was asked to deliver an address at his preparatory school. After he was introduced it took him five agonizing

minutes to hobble the ten or so yards from his seat to the podium. Finally he stood before the waiting crowd. This was all he said: "Never give up. Never. Never. Never. Never."

That man or woman has the potential to succeed who never gives up, even when failure seems inevitable. Tom Watson once declared that his greatest satisfaction in golf is realized by winning a tournament on a day that he is feeling below par. At such times he puts extra effort into every stroke.

It is a mark of greatness when a person, aware that he is fighting for his life, makes a supreme effort to accomplish whatever needs to be done.

Dr. G. Ernest Thomas



We here at Lamb Technicon wish to thank Dr. Thomas for his continuing words of encouragement and wisdom. In our business of building high technology machine tools there's a constant need for innovation and dedication. The future is indeed bright for youth to make that supreme effort to accomplish whatever needs to be done.



LAMB TECHNICON CORP.

5663 E. NINE MILE ROAD
WARREN, MICHIGAN 48091



The Flower Shop Kukkakauppa

Corsages
Boutonnieres
Fresh Roses

(906) 482-2060
320 Quincy St.,
Hancock



A greeting
card makes
someone
happy...and
shows you've
remembered.

Select from our gallery
of beautiful expressions.



AMERICAN GREETINGS
...for that special person

Lake Pharmacy

220 Calumet St. Lake Linden, MI 49945

TRY THE JUICY ONE



HANCOCK BOTTLING CO.
HANCOCK MICH. 482-3701

"Best Wishes
for an

Enjoyable Winter Carnival
from the
Mining Engineering
Department"

*Best Wishes for a
Successful Winter Carnival*

Make Us Your Green Plant Headquarters

Plants and Pots

*Now Flowering Azaleas,
Cyclamen and Violets*

**Nissila Greenhouses
Inc.**

*Open
Ripley All Year Phone 482-3111*



Did you know
that ice is a mineral?

Come and see
more minerals
at

the A. E. Scaman
Mineralogical
Museum



E.E.R.C. Bldg.

9 a.m. to
4:30 p.m.
Weekdays
no charge

Gay 90's BEEF & BREW
The Douglas House

A Fun Place to Eat!

Wine, Beer, and Your Favorite Cocktails

Enjoy our cheese bar daily 5 to 6 482-2000



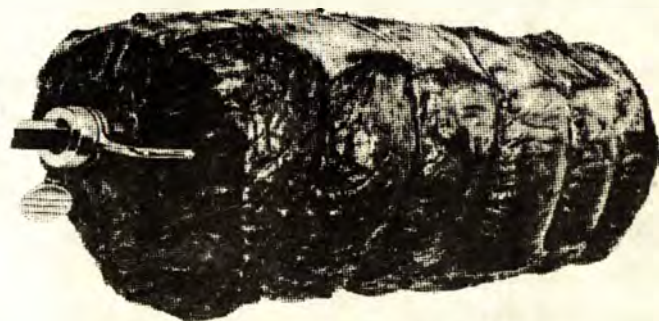
THE ONIGAMING
SUPPER CLUB

Open May thru through October

LAZZARI'S

**Special Market For
Your Convenience**

Monday Thru Sunday 9-11

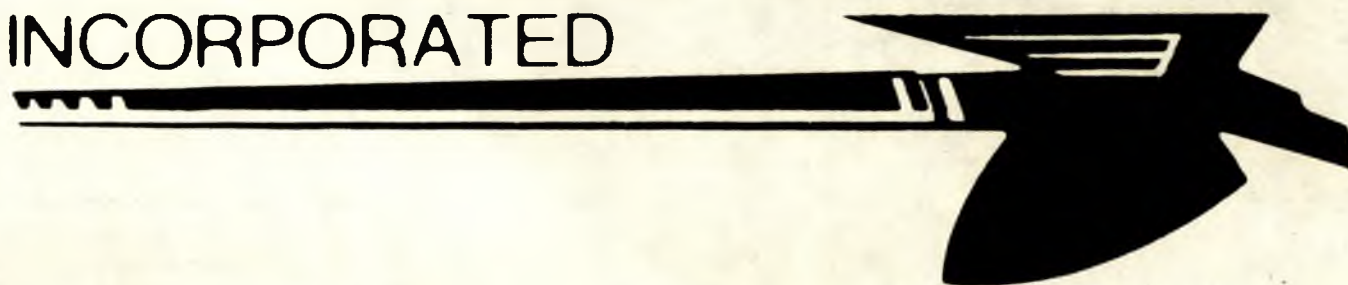


Meet Us For Good Meats

Phone 482-3280

Indian Trails

INCORPORATED



motor coaches

When Quality Counts - Count On Us!

Official Charter for the Winter Carnival "Honey Busses"

It takes more than snow to build a snow statue at Tech

BY TODD STONE
PICTORIAL WRITER

In early January students began to notice it. At first, it was almost undetectable but day after day it became more apparent. Soon there was no doubt . . . something was growing out of the snow at Michigan Tech. Each morning as students made their way to class they noticed more growth and before long 30 foot tall figures of ice had grown from Houghton's snow banks. These figures rapidly grew arms and heads when no one

was looking, and as January closed out the MTU campus and community was overrun by viscous looking abominable snowmen. Shortly, though, the rough unfinished faces took on detail that was far from viscous. Instead, the figures became cute and comical. Finally only a few days into February we find ourselves on an icy trip through comic strips at the 1983 Winter Carnival.

The above scene is a common one for Michigan Tech students. For the last 47 years, since 1936, blobs of snow on campus have grown into towering masses which are then sculpted into detailed characters to comply with the particular year's Winter Carnival theme. Through nearly a half century of snow statue competition, many "tricks of the trade" have been passed down. But the true stairway to successful statues seems to be through two very basic and necessary items.

The first and most important item needed in the snow statue business is rarely hard to come by in Houghton. That is, of course, snow. Mother Nature usually begins preparing for Winter Carnival in early November and by January has dumped an ample supply of the "white stuff" needed to create the huge snow sculptures.

Following close behind snow comes number two on the necessity list, which is plenty of enthusiastic help. It has been estimated that 1,000 hours are put into each statue. This overwhelming statistic is magnified by the fact that virtually all of the hours are spent late at night when study has been completed for the day. The enthusiasm cannot be shortlived if the statue is to be completed by the annual deadline of 9:00 a.m. Thursday morning. Many fraternity members, dorm residents and others find themselves out working all night the last couple nights before the deadline while visitors gather to watch in amazement.

It would seem to those unfamiliar with statue building at Michigan Tech that the cold Houghton winters

would tend to put a damper of enthusiasm. Au contraire! Tech students learned to deal with the cold long ago. An average student at a statue sight might wear a couple pairs of long johns, ski pants, a turtle neck, a wool sweater and socks, a down coat and 40-below boots. Outer warmth is not the only concern of statue builders though. Hot chocolate, coffee and various distilled beverages are consumed in large quantities in the better interest of inner warmth.

As visitors watch statue builders rush frantically to finish statues by the deadline, they might get the wrong idea. What appears to be a last minute effort to finish a poorly planned project is really the end of some three months of thought and work. In November, at a table in a local pub or in someone's dorm room, some people gathered together to draw up some ideas for the year's statue. After many drawings, the best idea is selected and plans are made. Construction will begin the first day back from Christmas break.

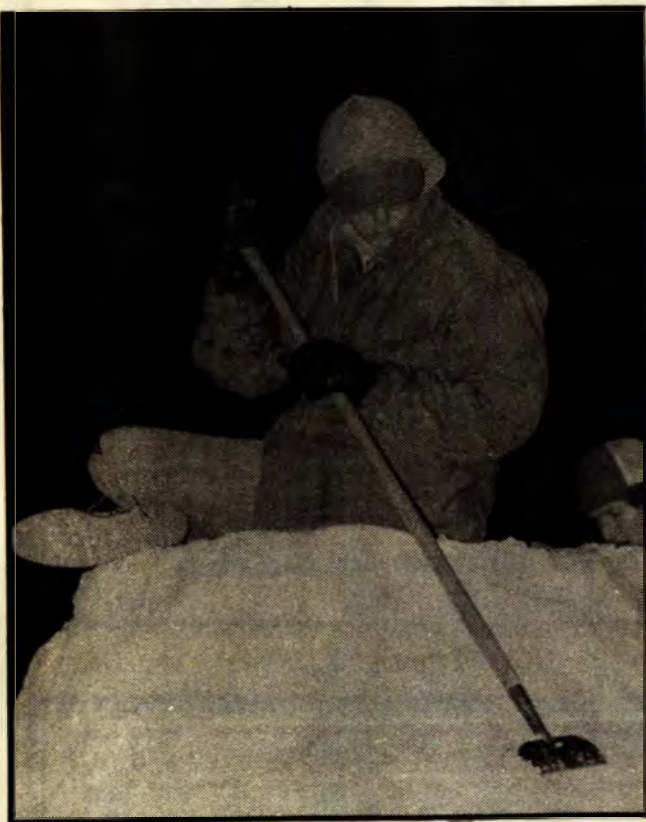
The first step in construction is usually to create large masses of ice. This is accomplished by enclosing an area with a snow fence, which is then filled with snow and water. The snow/water mixture is compacted by students who stomp it down with boot clad feet. When the slush has reached the top of the fence it is allowed to freeze solid. The snow fence is then removed and other tiers are likewise added until the desired height is reached.

After the snow masses are complete Tech's artists get a chance to show their stuff in the actual sculpting. Tools for carving include anything from spoons and butter knives to huge machetes, axes and shovels. After carving, the ice is rough and usually contains large amounts of discoloration from dirty snow or red paint from snow fences. To cover this and to add to the detail of the sculpture Tech students go through a "slushing" process. The process involves getting ahold of some clean snow and making a very wet slush from it. The slush is applied as an icy coating all over the statue's exterior, leaving it much cleaner and whiter looking. The last step in the construction itself employs a common household appliance. An electric iron is applied to statues' outer surfaces to smooth it out and give it an icy luster.

The final touch is the addition of letters for the statue's title. The letters are made of the same type of slush that the rest of the statue is made of but they are colored, usually with food coloring. There you have it . . . voila, a finished statue!

One other area of snow sculpture competition worthy of note is the one-nighter statue. These statues go through much the same process except they are started at 4:00 p.m. Wednesday and must be completed the next morning at 8:00 a.m. These statues go through the whole process in about 3 percent of the time it takes to complete the Class A statues.

Soon Carnival 1983 will be history. The statues will be knocked down to avoid a possible hazard. As spring comes to the Copper Country they will melt away leaving us with only a memory and a curious wonder of what will grow out of Houghton's snow banks next year.



Pictorial photos/Dave Strang



Ice picks and chainsaws are only two of the artistic tools of an ice sculptor. Artists work hard through Thursday morning when the statues are judged.

(Below Left and Right) - Delta Sigma Phi brothers brave the cold and sleepless nights to carve their sculpture. (Below) - Phi Kappa Tau members work to create a reproduction of the Smurf village.



Pictorial photos/Dave Strang





**FIRST
NATIONAL
BANK**
OF CALUMET-LAKE LINDEN - 49931

*First National Bank of
Calumet - Lake Linden*

Supports

Winter Carnival

**SERVING THE GREATER
NORTH KEWEENAW
PENINSULA**



Kathy's Country Flowers
"flowers for all occasions"



corsages
boutonnieres
green plants
cut flowers
weddings

482-6261
109 Quincy St.,
Hancock

we send flowers anywhere



afs

Teleflora



**WHEN
THE
TIME
COMES
TO CHOOSE**

WE HAVE LOTS TO CHOOSE FROM

We have lots of bridal sets from which to choose in a wide range of prices. Come see for yourself. Please think about us for all your jewelry needs.

Laiti Jewelers
482-0270



Watches-Diamonds- Jewelry

**110 Quincy Street
Hancock Mi. 49930
Robert M. Butke**



World's Largest Lodging Chain

KING'S INN

HOUGHTON, MICHIGAN 49931



Innkeeper David Mickelsen
(906)482-5000 1-800-528-1234

All major credit cards

**Graduate Programs
In
Mechanical Engineering
And
Engineering Mechanics
M.S. And PH.D.**

Areas of Study:

- Solid Mechanics
- Manufacturing & Industrial
- Energy and Thermo-Fluids
- Computer Aided Engineering/Design
- Dynamic System

Research And Teaching Assistantships
contact:

Dr. John H. Johnson

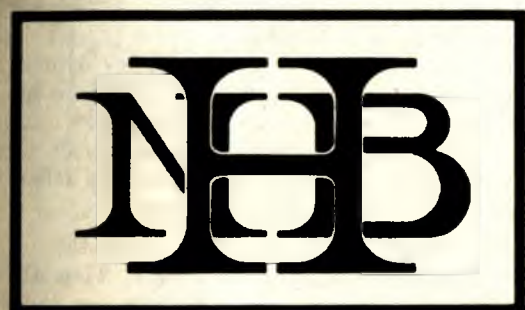
ME-EM Department

**Michigan Technological University
Houghton, Michigan 49931**

Think Positive

Think Huskies.....

Think Houghton National Bank.....



Downtown University Chassell

YOUR FULL SERVICE BANK®

Member FDIC



Fire-up for Winter Carnival



Stop by & see our
ski posters. . . a
new selection of
coffee mugs with
just-the-right-verse
for someone
special. . . unusual
gifts & Valentines!

Commercial Systems

414 Shelden Avenue, Houghton
482-3990

JOFFEE'S

**men's store -
shoe store**

Downtown Hancock

Wishes Everyone a

**Happy
Winter Carnival**

Joffee's

Hockey Huskies are close to success

BY KEVIN R. ERICSON
PICTORIAL WRITER

Starting off in a new job can be tough. It can be made even tougher when the person is put into a position of following in the footsteps of a man that previously held your job for 26 years. Some people expect instant success, others question every move you make that "wasn't the way it was before." For Coach Jim Nahrgang of the Michigan Tech hockey squad, this has been a season of highs and lows, optimism and disappointment, but when every piece finally clicks into place, he will have a top notch team.

"My original expectations for this squad were a little optimistic," Nahrgang explains. "At first I was a little disappointed, but I do believe that we belong where we are at this time."

Going into last weekend's series with Lake Superior State, the Huskies were in fourth place, one point ahead of Northern Michigan and four behind third-place Ohio State. The team has compiled a 15-13 record overall and a 13-9 mark in the Central Collegiate Hockey Association.

While Tech is strong offensively, it has had to start five freshmen defensemen at different times, due to the loss of three seniors at that position last year. The lack of seasoned players at this position has taken its toll throughout the year, turning leads into losses and not

allowing the offense to turn games to their favor. Though this has plagued the Huskies in the previous games, once the younger players mature there could be no stopping this squad.

Michigan Tech's offensive power has been explosive throughout the season. Four players have accounted for five hat tricks. Senior Jim Bissett has been the best surprise for the team. Dubbed "Saturday Night Fever" by the media, Jim has scored almost all of his 19 goals during the Saturday contests. He led all of the team's scorers with a total of 40 points going into last weekend's games. Bissett has scored four shorthanded goals and could possibly set a team record in that department. He also leads the team in game winning goals with four, the most exciting was a shorthanded tally that spelled defeat for Northern Michigan in a overtime contest played before a packed house in Marquette.

Linemate Steve Murphy has been closing fast on Bissett. Murphy has scored 18 goals and has added 20 assists, along with a team leadership of eight power play goals. Add to this line freshman Doug Harris and the trio totals 64 goals, six game-winners, 18 power play tallies, and seven shorthanded goals, close or more than 50% of the team's output in those categories.

Besides these three, two others are listed among the tops in the league. Junior captain Bill Terry started off slow this season, but as he has done in his previous

seasons, Terry has started to cook. Bill has 14 goals and 17 assists so far to rank him third in the team standings.

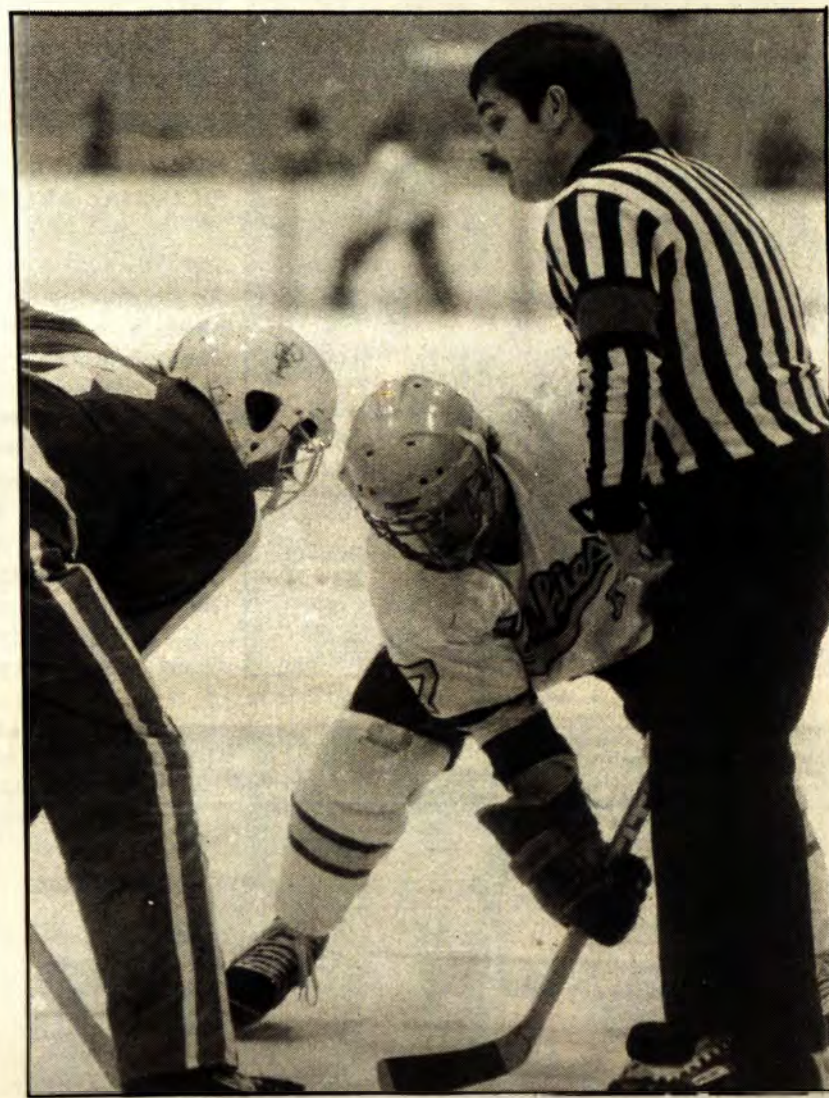
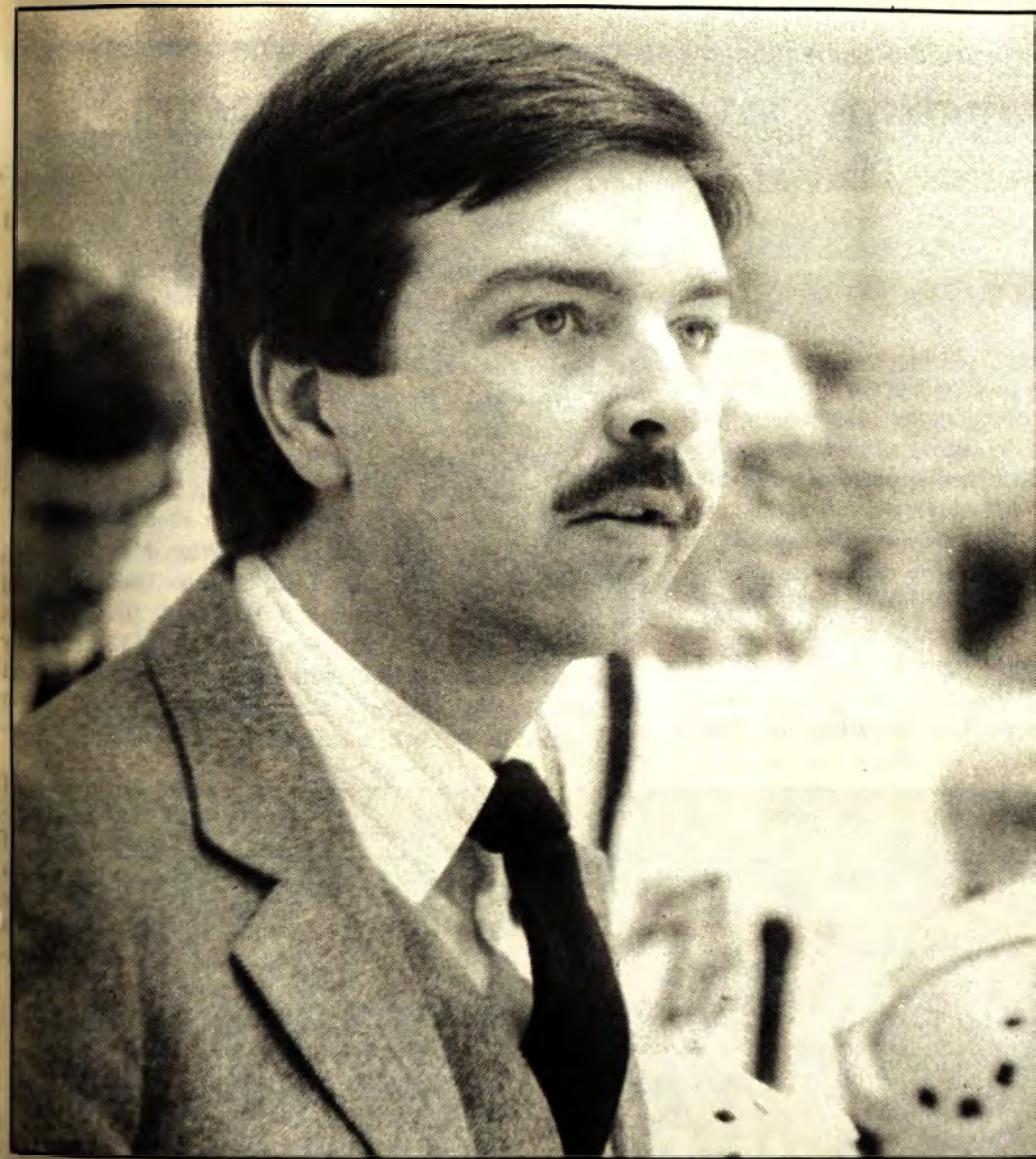
Sophomore Mike Nepi has to be the most pleasant surprise on the blue line corp to date. An aggressive defenseman, he has also posted impressive scoring statistics that haven't been seen from the Husky defense since Tim Watters left two years ago. While he has only scored five times, he has helped on 21 others, taking the puck into the slot and passing at the perfect moment. Nepi is the player that can help turn Tech's defensive inexperience into a winning combination.

In the nets, Tech has gone with the two-man platoon system throughout the season. Tom Allen and Mudge Tompsett have both had their ups and downs throughout the campaign and Nahrgang is anxiously waiting for one of the pair to get hot and lead the squad for the rest of the season. There is no front runner in this race currently, as both men have put on fine exhibitions against the top teams.

Husky hysteria is within a fraction of an inch of gaining the one thing it needs to finish the season successfully -- consistency. The Huskies have beaten all of the top teams that it has faced, except one, Michigan State. It has also had to face up to losses against some of the lower division teams. Currently in the midst of a seven-game home stand, Tech may pick up the confidence it needs to make the last piece of the puzzle fit.



Pictorial photo/Dave Strang



Pictorial photos/Dave Strang

(Left) - Goalie Mudge Tompsett (29) guards the net while Bill Terry (7) goes after the puck. Conrad Vachon (4) battles with an opponent to keep him away from the action. (Above) - Coach Jim Nahrgang intently watches the hockey action. (Above Right) - Team Captain Bill Terry (7) prepares for the faceoff. (Right) - Ron Zuke (12) expresses his delight with Tech's latest goal.





Pictorial photo/Dave Strang

Shooting for a winning season

BY LYNN BOYD
PICTORIAL WRITER

The men's basketball team has had plenty of ups and downs thus far into the 1981-82 season. Looking for his eighth winning season, head coach Bill Gappy is having a tough time bringing his young squad around. The loss of an entire starting lineup to graduation and the inexperience of the new and younger players have been leaving dents in the team's performance which shows a struggling record of 6-9 overall.

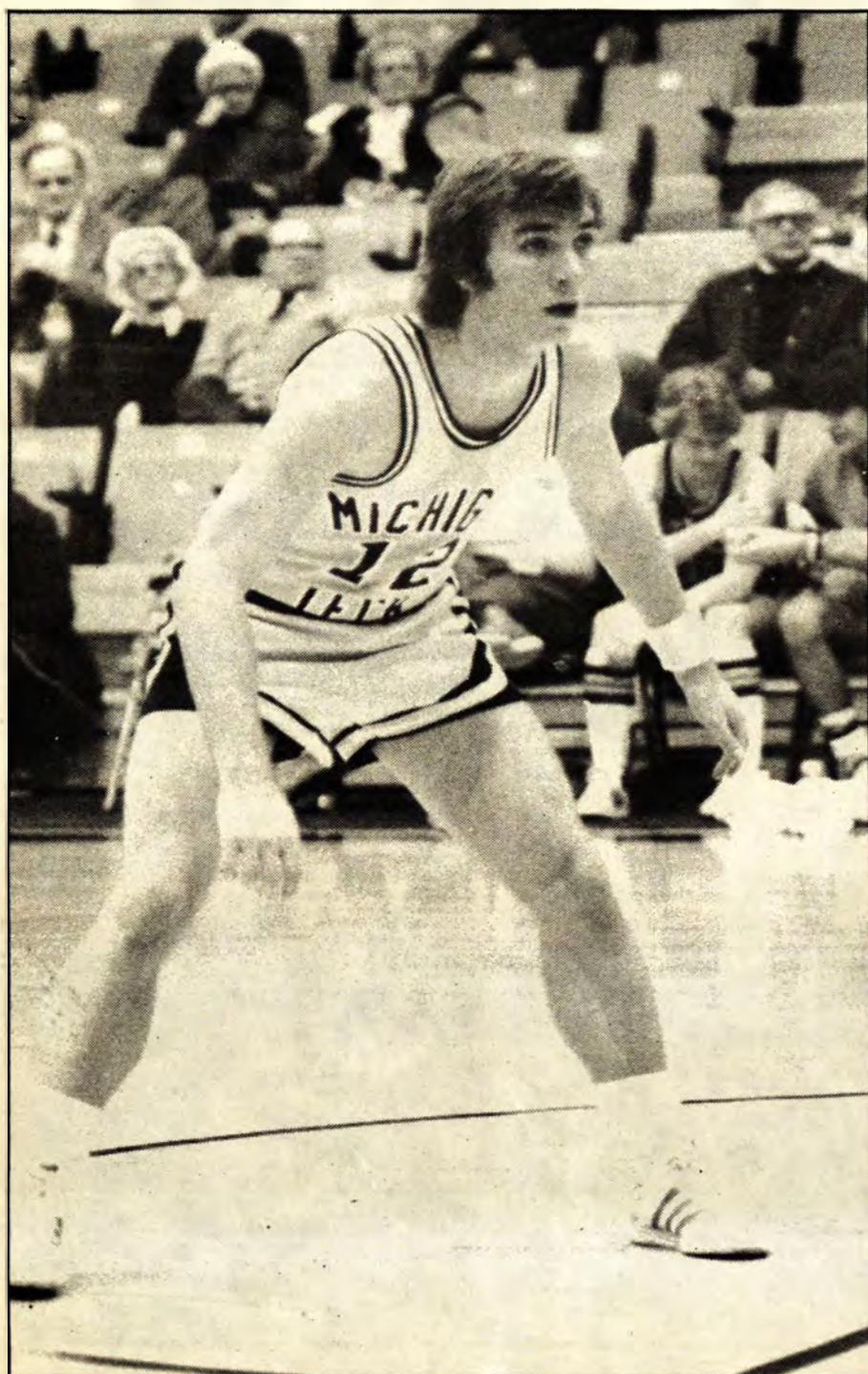
The Huskies opened their season with several non-conference games to enter league action with a 2-2 record. GLIAC opponent Lake Superior State gave Tech a battle for the first conference win of the season, but fell short as the Huskies edged by the Lakers 75-73.

The Huskies dropped their next conference game to Grand Valley State College. Low shooting percentages

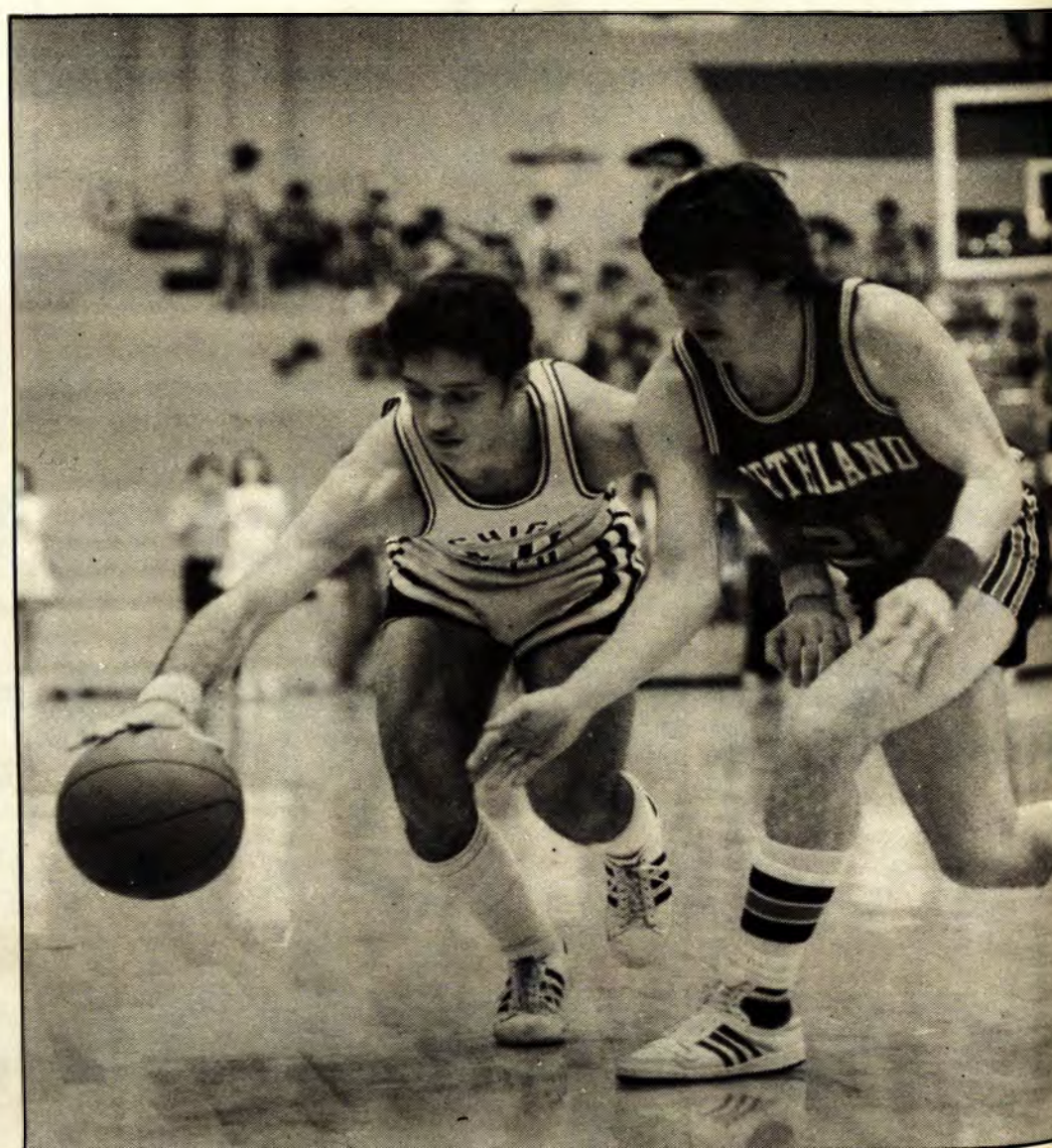
from the opening minutes of play put Tech down 25-40 at the half. Try as they might, it was never enough to catch up and pull ahead.

Despite conference and non-conference upsets by Oakland University and upper peninsula rival Northern Michigan, the Huskies have pulled through with upsets of their own. Recently defeating second and third conference ranked Wayne State and Ferris State Colleges, Tech's roundballers have a month's schedule of games remaining in which to move up in GLIAC standings and present Gappy with another successful season.

As of last week's contest with Wisconsin opponent St. Norbert College, junior Todd Kleinow leads the team in scoring with 217 points. Just behind the 6'3" forward is freshman Dave Besonen, with 138 points. Besonen is also credited with 20 steals and 52 assists. Everett Hall, previously a member of the Huskies' football team, leads Tech in rebounding, pulling down 120.



Pictorial photo/Earl Mullins



Pictorial photo/Dave Strang

(Top) - Coach Bill Gappy talks to his team during a break in the action. (Left) Dave Besonen (12) guards his zone during a defense play against Tech's opponent. (Above) - This Tech player is trying to keep control of the ball as he works his way down court.

Women's basketball team places among NCAA leaders thanks to size and speed

BY PAUL MLOTKOWSKI
PICTORIAL WRITER

The Michigan Tech women's basketball has entered the stretch portion of their season sporting a .500 record. Coach Diane Morea has not been disappointed with her team's performance to date. "I feel we've done very well to be at .500 at this point in the season," she said. "With the number of young players on our team, I didn't expect to do much better than that."

This year's newcomers have been a pleasant surprise, according to Morea. Escanaba freshman Sandy Davison has been by far the team's most consistent player, leading in court time, among the high scorers and rebounders in virtually every game, and committing just over one foul a game. First year player Karen Filppula set a team season record for assists while guiding the team's explosive offense early in the season.

Powered by a combination of size and speed, the Huskies earned a place among NCAA Division II offensive leaders early in the season. Sophomore Lora Haltenhoff has scored a lion's share of points for the Huskies, averaging over 16 a game. Senior Jodi Peter's average of 12 points a game seems certain to make her the first 1000 point scorer in the team's history.

Tech has enjoyed a size advantage over all of its opponents this season and has turned that advantage into rebounding strength. Haltenhoff and sophomore Sharon Walton have controlled the boards for the Huskies, with Walton coming into her own as a center. Senior Cindy Reynolds has been strong on the boards in recent games, using her experience to find the ball against tougher conference opposition. The team's busy pre-conference schedule gave Morea a chance to give her freshmen valuable playing time. Freshmen Lisa Starr, Cathy Clark, and Laura Williams all have shown promise while gaining experience.

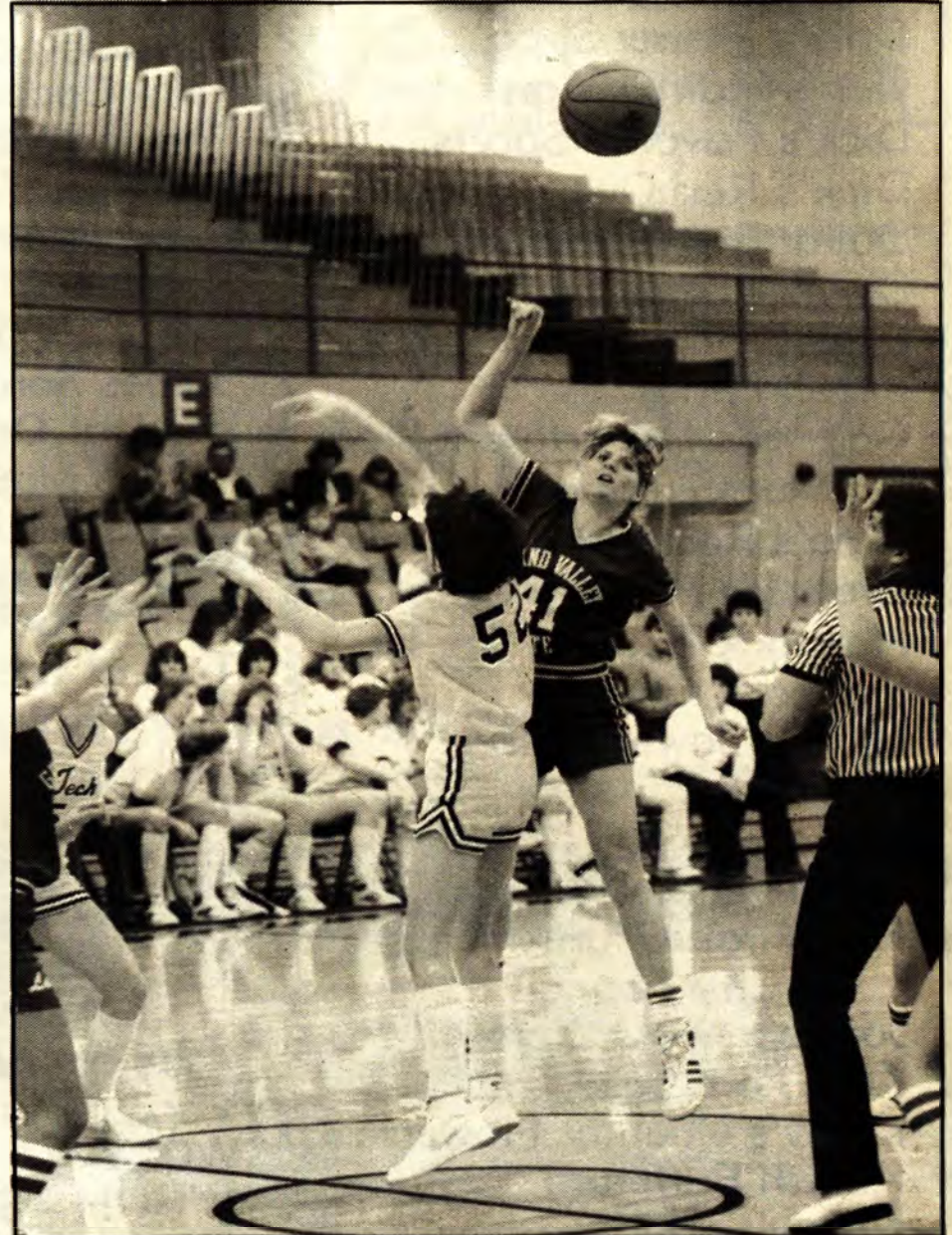
The Huskies have slowed down their offense in favor of a tighter defense in recent games. Sparking the team's defensive resurgence has been the play of junior Jill Merrick. Merrick has set a team record with over 40 steals so far this season.

One of the Huskies most obvious assets has been the strength of their bench, as Morea has substituted freely in every game this season. Juniors Julie Wilson and Sue Kinz give Tech experienced depth, while freshman Karen Peterson, at 6 ft. 3 in. has the potential to terrorize opposition with her size.

Pictorial photos/Dave Strang



The women's basketball team has shown great promise this year. As shown, the team is powered by a combination of size and speed. Although their offensive play has slowed in recent games, they have a very tight defense.



Winter Carnival Booster Club

Blue Key wishes to thank everyone who helped to make the 1983 Winter Carnival the most successful ever. Special thanks goes to the Winter Carnival Booster Club listed below.

Angel Flight
Arcadian Acres Motel
Cerutti Market
Chassell Food Mart
Copper Art/Art Chaput
Copper Country
Chamber of Commerce
Copper Country Cottage
Copper Country Dairy
Copper Range Company
Daily Mining Gazette
Dale's Flower Shop
Dan's Hair Design
Dick's Favorite Sports
Dick's Red Owl
Dollar Bay Linoleum & Tile
Dwyer's Shoe Store
Elias Brothers Restaurants
Karen Fettig
Gartner's Department Store
Gil-Mar Gift Shoppe
Gino's Restaurant
Greenlee Printing Co.
Hancock Bottling Co. Inc.
Hancock Conoco
Haug's Jewelry Store
Coon's 66 Service
Holiday Motel
Holiday Station Store
Houghton County
City Council
Joffe's Mens Store
Karp Ford Sales Inc.
Kathy's Country Flowers
Kirkish Furniture
Kiwanis Club
of the Copper Country
Kukkakauppa Flower Shop

Kukkonen's Card
& Gift Shop
Laiti Jewelers
Lake Pharmacy Inc.
Lee's
Leo H. Roy Insurance
Leo's Drug Store Inc.
Library Bar & Restaurant
Maiki Oil Co.
Meyers Chevrolet Olds Inc.
Multi Media Inc.
Omicron Delta Kappa
Parkside Bakery
Pat's Copper Country IGA
Portage Motel
The Print Shop
Quincy Mining Company
Ralph's Alignment & Repair
Ray's TV Sales & Service
James Sarazin, DDS PC
Student Development
Complex
Sound & Lighting Services
Surplus Outlet
Swift True Value Hardware
Talk of the Town
Hair Designs
Ted Gast
Tom's Service
U.P. Engineering &
Arch. Association
U.P. Mink Breeders
Association
Usitalo's 66 Service
Vacationland Motel
WCCY
WHUH - Stereo 98
WMTU
Wonderland Motel & Cabins

WZRK-Z93
Downtowner Motel

Gold Club

Best Western King's Inn
The Book Concern
College Motel
Commercial Systems
Douglass Houghton Hotel
Herman Gundlach Inc.
Houghton Bottling Co.
Houghton National Bank
Jim's Foodmart
Lazzari's Market
Merchants & Miners Bank
McDonalds of Houghton
Superior National Bank
Vertin Bros. & Company

Thanks!

from Blue Key



PIKE RIVER INN

2 blocks west off of US41 on

7th street

next to the firehall

Chassell

523-4505



Hours
Monday thru
Saturday
11a.m. - 12p.m.

Sunday 12 - 10p.m.



800 Shelden
Houghton
482-1991

Featuring: Mexican Specials
Homemade Soup
Sandwiches
Burgers
5 brands of Draft Beer

Tuesday
Chinese night
5:30 - 9:00

Wednesday
Peoples night
8:00 - 10:00

Thursday
Mexican night
5:30 - 9:00

MICHIGAN TECH STUDENT DEVELOPMENT CENTER



stop in and see our new pro shop



Special Events



Pictorial photo/Earl Mullins



Pictorial photo/Dave Strang



Pictorial photo/Dave Strang

(Top Left) - A human dogsled team prepares to pull its sled and riders through the race and across the finish line. (Top Right) - A women's broomball game also seems to feature calisthenic entertainment. (Above Left) - The team leader relies on his portable stereo to provide him with the beat to race to. (Right) - Mush, you Huskies!



Pictorial photo/Earl Mullins



Pictorial photo/Earl Mullins

(Left) - A student participant in the snowshoe race concentrates to bring his team a victory
(Below Right) - But he's down and laughing as his oversized footgear trips him up. (Below) - Nordic skiers compete in a race through Tech's trails.



Pictorial photo/Earl Mullins



Pictorial photo/Dave Strang

Memorial Union



E.R. Lauren Bookstore

Congratulations to the Queen Candidates

300 Pearl St.
Houghton

482-4080

Open 7 Days
a Week

f
o
o
d
Jims
a
r
t

The store
with the
red carpet
service.

Area's most
beautiful
and spacious
super
market

✓ Beer
✓ Wine
✓ Liquor

VERTIN'S

Department Stores
in Downtown
Houghton and Calumet



482-3250 337-3000

Thinking About Your Future?

The **Department of Chemistry and Chemical Engineering** may have the program to suite you. In addition to the traditional degree programs in Chemistry and Chemical Engineering, the Department in cooperation with other University resources now offers programs tailored for those who have specific industrial careers in mind.

And there is more. If after receiving a B.S. degree you decide to continue your education, the Department also offers both Master and Doctor of Philosophy degree programs.

To find out about the many options available to you, contact the **Department of Chemistry and Chemical Engineering** at **Michigan Technological University**.

FRANK A. DOUGLASS AGENCY, INC.

General Insurance

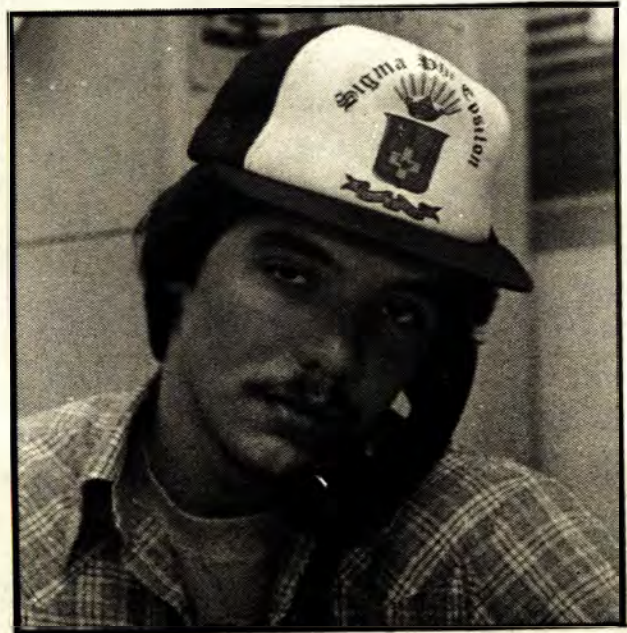
Real Estate and Appraisals



324 Sheldon Avenue
Houghton, Michigan 49931
Phone: 482-2660



Scott Heckel
Photographer



Kevin Maguire
Ad Production Manager



Edith Greene
Production Technician



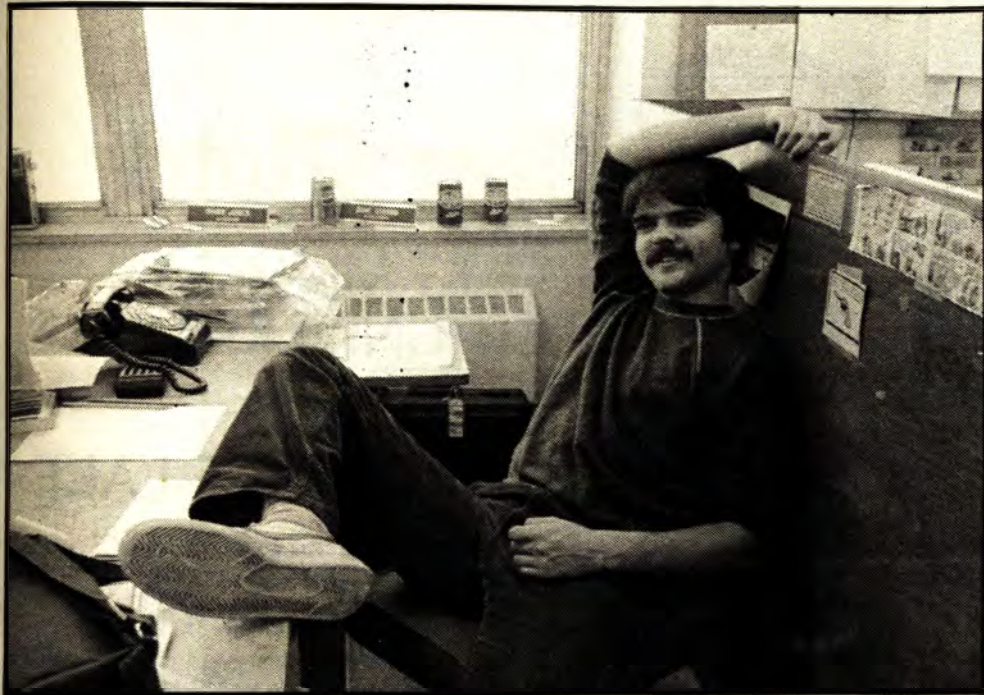
Diane Pawloski
Business Manager



Don Bolger
Photo Technician

The Staff

After a hard days night



Joe Hohner
Editor



Dave Strang
Photo Editor



Larry Delahanty
Managing Editor



Rob Reynolds
Associate Editor

Cohodas-Paoli Distributors

Houghton, Michigan 482-3660

Complete

Food-Service

Distributors



College Motel

SERVING MICHIGAN
TECH UNIVERSITY.

ROOMS OVERLOOKING
PORTAGE LAKE

CALL
482-2202

NEAR ISLE ROYALE
NATIONAL PARK
HEADQUARTERS

- MEETING ROOMS
- LARGE FAMILY UNITS
- 24 AIR CONDITIONED UNITS
- COLOR CABLE TV
- DIRECT DIAL TELEPHONES
- GOLF COURSE NEAR MOTEL



1308 College Avenue, Houghton, Mi 49931

-the LIBRARY

BAR and RESTAURANT



62 north isle royal st houghton mich 49930



Compliments of
PETERLIN DISTRIBUTING CO.

Hi-way US-41 Telephone 337-0213

Calumet, Michigan

Bringing you this spirit of WINTER CARNIVAL



HOUGHTON BOTTLING COMPANY, INC.



13 N. Bridge St.
Houghton, Mich
49931
Tel. 906/482-0161

