

3347
L63
1985
ARCH

Michigan Technological University

MICHIGAN TECH LODE WINTER CARNIVAL PICTORIAL



LIBRARY
MICHIGAN TECHNOLOGICAL UNIVERSITY
HOUGHTON, MICHIGAN 49931



22nd Annual

February 1, 1985

OUR GOOD PEOPLE AWARD TO



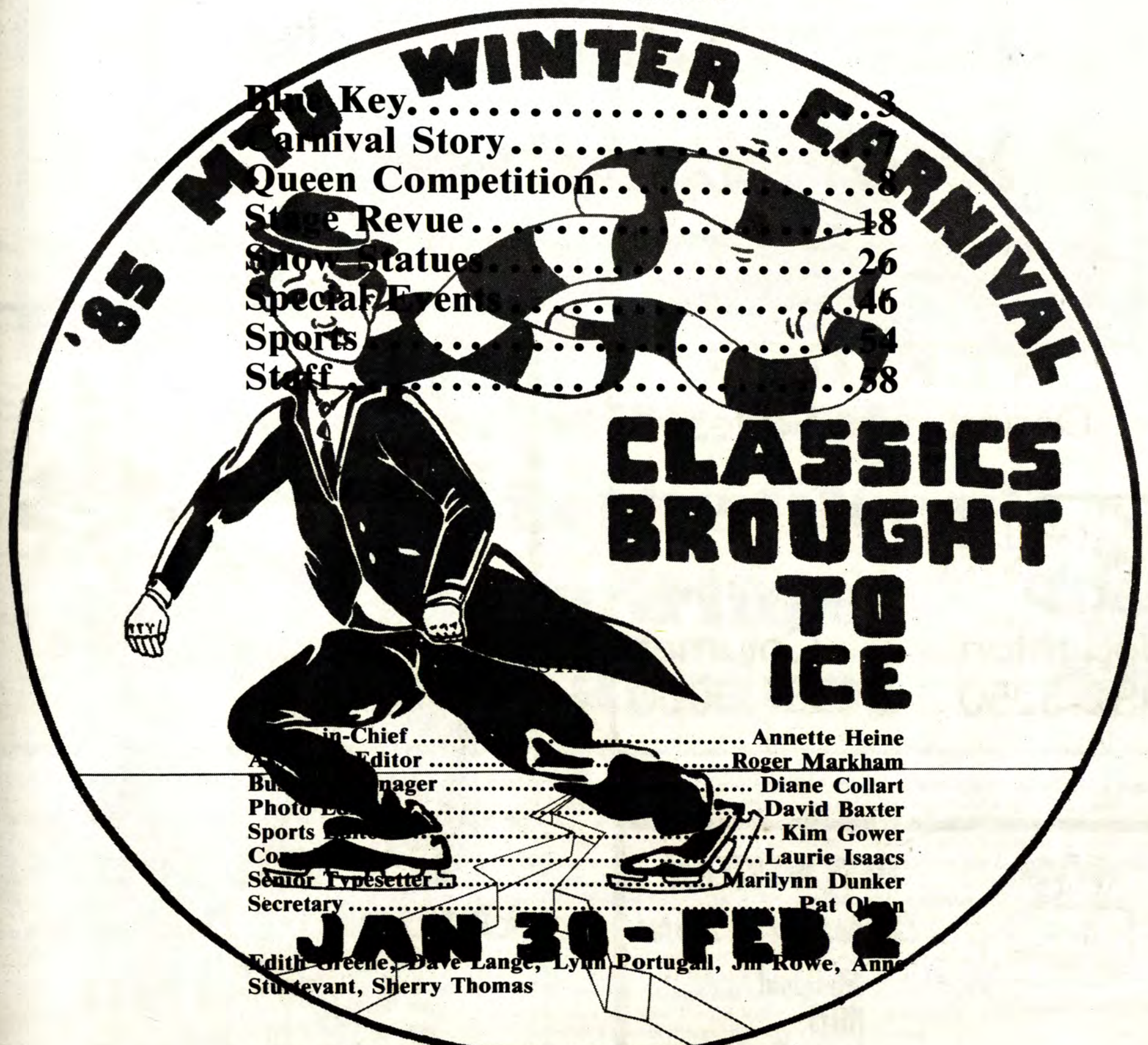
Blue Key National Honor Fraternity Houghton National Bank

When the time comes to stand up and be counted,
we know we can always count on you.

**We're
PEOPLE
SM
Like You!**



Table of Contents



WINTER CARNIVAL

85 MTU

CLASSICS BROUGHT TO ICE

Table of Contents

Blue Key.....3

Carnival Story.....8

Queen Competition.....18

Stage Revue.....26

Snow Statues.....46

Special Events.....54

Sports Staff.....58

Editor-in-Chief.....Annette Heine

Assistant Editor.....Roger Markham

Business Manager.....Diane Collart

Photo Editor.....David Baxter

Sports Editor.....Kim Gower

Contributors.....Laurie Isaacs

Senior Typesetter.....Marilynn Dunker

Secretary.....Pat Olson

JAN 30 - FEB 2

Edith Greene, Dave Lange, Lynn Portugall, Jim Rowe, Anne Sturtevant, Sherry Thomas

Printed by The L'Anse Sentinel, 202 North Main, L'Anse, MI 49946
Color by The Village Press, P.O. Box 986, Traverse City, MI 49684

The Winter Carnival Pictorial is an editorially independent publication of the Michigan Tech Lode, Michigan Technological University, Houghton, MI 49931

Special thanks to MTU Activities Scheduling for their help with the cover photo.

Cover Photo by David Baxter

Please patronize the 1985 Winter Carnival Pictorial Advertisers !

VERTIN'S

Department Stores
in



Downtown
Calumet
337-3000

Houghton
482-3250

Best Wishes For
WINTER CARNIVAL !!!

MONT RIPLEY

Have A Great Time!

SKI HILL



World's Largest Lodging Chain

BEST WESTERN
Copper Crown Motel

Whirlpool
HBO
Indoor Pool
Saunas

US 41, Midtown

Hancock, Michigan 49930

Call Toll Free
(800)528-1234

(906) 482-6111

For All Your
Building Needs...

**McGann
Building
Supply**

Hancock Avenue
Hancock, Michigan



The '84-'85 Blue Key members:(left to right, front row) Steve Jones, Lisa Phelan, Craig Martek, Cathy Peters, Paul Halverson, Theresa Barr, Joe Galetto (advisor), Burnie Sell, Dale Gracyalny, (middle row) Briant Kling, Ellen Hedfield, Jim Harris, Tim Pozsgai, Brian Tamminen, Dave McMullen, Mark Ruman, John Cuthbertson, Larry Smolinski, Bryan Ackerman, Chris Hopper, Sharon Bourdow, (top row) Mike Pulick, Cathy Zuellig, Deann Klosterman, Cindi Anderson, Deb Gillette, Ken Letwin, Cindy Campbell, Dave Redman, Eric Stasak, Brian Devarenne, Deb Hare, Larry Johns, George Maxton, Kerry Lanning, Dave Moe.

Blue Key is the "Key" to Winter Carnival



by LAURIE ISAACS
Copy Editor

Blue Key National Honor Fraternity sponsors and organizes Winter Carnival; it's a full year task for the 35-member organization. Two weeks after this carnival is over, Blue Key will start organizing and planning next year's carnival and festivities.

To minimize confusion and maximize efficiency, Blue Key divides itself into seven committees, each taking care of a different aspect of the carnival competitions and activities.

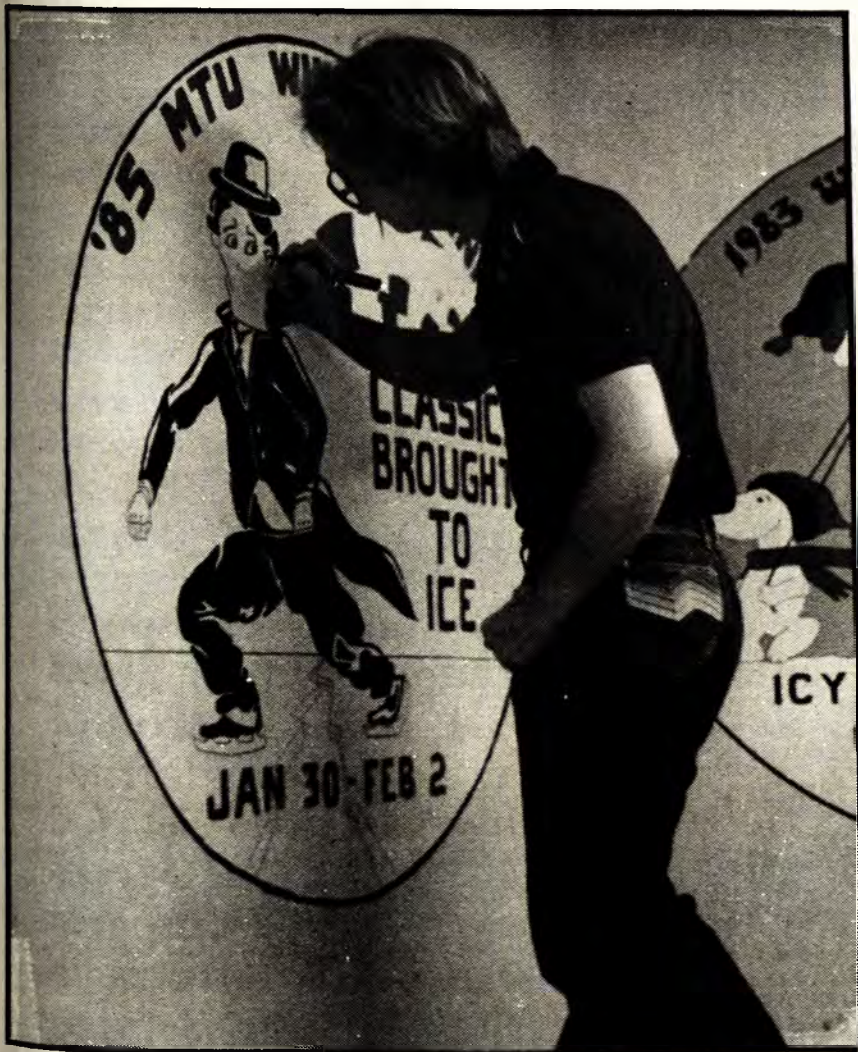
Organizing and working on Winter Carnival, according to Blue Key president Paul Halverson, "is a lot of fun—I've been working with all kinds of good folks, good help. The executive board has been very competent, and the chairs have also been very good at helping out—people have been putting in the extra time required to get things done."

Cathy Peters, Blue Key vice president, estimates that the organization's officers each put in between 200 and 300 hours of work into Winter Carnival during winter term, "And over the year for the whole group it's in the thousands of hours," said Peters.

One of the main things Blue Key does, according to Halverson, "is to try to remain objective, try to think about everybody's interest, and to make the rules fair to everyone. This includes all organizations, even the small ones."

Halverson enjoys seeing the final products of all those months of planning and work. "I like to see the final shows—I know what's gone on behind the scenes, and it feels good to see them pulling the final performance off." He describes carnival as "exhausting, though. Just like the rest of Michigan Tech's student population, everybody in Blue Key has tests this week too."

Halverson and Peters said that other organizations and individuals helped and put a lot of time and work into Winter Carnival include WMTU, SLS, ODK, CLB, Mu Beta Psi, the "Jazzin" dance troupe, Angel Flight, Harley Sachs, and the community Booster Club. "These groups did a lot of work to help make this year's Winter Carnival a very special experience and a success," said Halverson.



Pictorial Photo/Tom Johnson

John Sederholm paints the logo outside of the Blue Key Office in the Memorial Union.

The Winter Carnival Booster Club

The Blue Key National Honor Fraternity wishes to thank everyone who helped to make Michigan Tech's 1985 Winter Carnival the most successful ever. Special thanks go to the Winter Carnival Booster Club listed below.

The Gold Club

City of Houghton
Houghton Bottling Company
Jim's Foodmart and Jim's Foodmart Too

The Silver Club

Best Western King's Inn
College Motel
Commercial Systems
Copper Country Concrete Corporation
Houghton National Bank
Library Bar and Restaurant
Maki Oil Company
South Range State Bank
Superior National Bank & Trust

The Bronze Club

Burger King
Copper Crown Motel
Copper Range Abstract and Title
Copper Country Apothecaries
Dick's Red Owl Store
Downtowner Motel
Dr. Robert and Dr. William Nara, D.D.S.
Equitable Life of the U.S.A., Lloyd Phelan
Gazette Apartments
Green Acres Country Market
Horner Flooring Company

J.C. Penney Company
Kukkakauppa Flower Shop
L & N Electronics
Pamida Inc.
Peninsula Travel Service
Portage Motel
Quincy Mining Company
Tercha & Daavettila, Attorneys
Usitalo's "66" Service
Vertin's

A-1 Rentals
 B & B Bar
 Honorato Barrios, M.D.
 Leonard Beesley, D.D.S.
 The Cafe Advocate
 Cedar Bluff Apartments
 Central Foods
 Chippewa Hotel and Restaurant
 City Snyder Drug Store
 C.L.'s Right Image
 Coast to Coast Store
 College Avenue Vision Clinic
 Coon's "66" Service
 Copper Theaters
 Cozy Corner Bar
 Copper Country Medical Center
 D & L Janitorial Services
 Dale's Flower Shop
 Dan's #1 Hair Design
 Dan's Used Car Sales
 Del's Beauty Salon
 Dollar Bay Linoleum and Tile
 Company
 Downtowner Lounge
 Dwyer's Shoe Store
 The Einerlie Shop Antiques
 E.R.A. Advantage Realty
 Fallon's Grocery
 Forty One Lumber Company
 Gartner's Department Store
 Gemignani's Restaurant
 Gentlemen's Choice
 Gil-Mar Gift Shop
 Gino Vettori & Sons
 Gitzen Company
 Goodell Oil Company
 Hancock Bottling Company
 Hancock Conoco
 Hancock Hardware
 Haug's Jewellery Store
 Healy Agency
 Holiday Motel
 Holiday Service Stations, Inc.
 Houghton Service
 Houle's Upholstering
 D.E. Jepsen, Chiropractor
 Joey's Grocery Store
 John Roger Johansen
 Johnson's Used Cars
 J.B. Jenkins, Attorney at Law
 J.W. Dandy Grocery Store

Karp's Ford Sales
 Kathy's Country Flowers
 Kathy's Hair Style Shop
 Marshall Keltz, Attorney
 Ken Koski Sign and Electric
 Keweenaw Gem and Gift
 Keweenaw Mountaineering Shop
 Keweenaw Waterway Resort
 Kinnunen Contracting
 Kirkish Furniture Company
 Kiwanis Club of Hancock
 Kiwanis Club of Houghton
 The Kosmetique
 Kukkonen and Kliber, Attorneys
 Kukkonen's Cards and Gifts
 Laiti Jewellers
 Lakes Engineering Company
 Lazzari's Market
 John Lawton, D.D.S.
 Louis Braun Agency
 Marie's Deli and Gourmet
 McGann Building Supply
 The Medicine Shoppe
 Meyer's Chevy-Olds, Inc.
 Mike Lahti State Farm Insurance
 Gary Moberg, D.D.S.
 Montgomery Ward
 Monticello's Grocery
 National Bonded Collection
 Service
 Neil's Cab
 Nissila Greenhouses
 Robert Nominelli
 Northern Auto Service
 Northern Light Christian Books
 Nutini's Supper Club
 Oak Tree
 Ozanich and Nelson, C.P.A.'s
 Payn's News
 Pesola's Furniture
 Pink Cloud Beauty Salon
 The Pro's Choice
 Professionals in Photography
 Ralph's Auto Repair
 Range Finer Foods
 Regis Hairstylists
 Robert Richards, D.D.S.
 James W. Sarazin, D.D.S.
 Sherwin-Williams Company
 Siirtola Well Drilling
 South Range OK Hardware

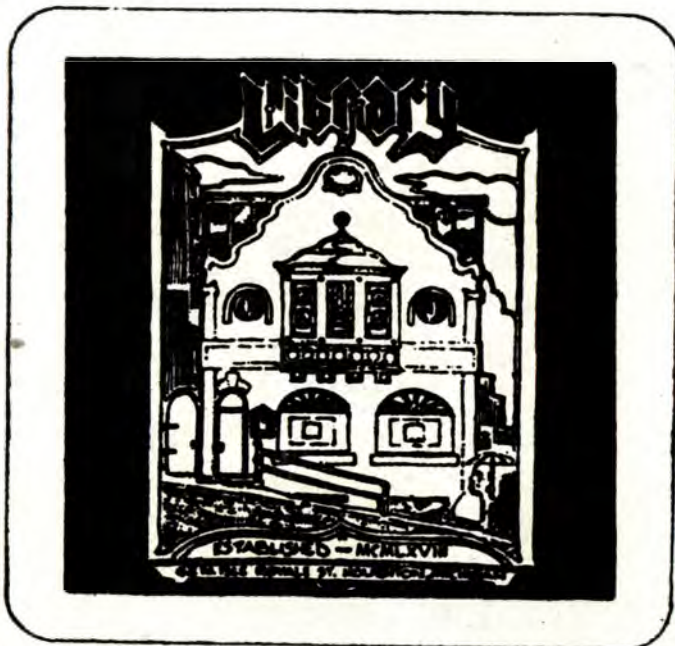
State Wide Real Estate
 Stevens-Aho TV and Appliance
 Suomi Bakery and Restaurant
 Superior Block
 Superior Sand and Gravel
 Superior Service Garage
 Superior State Agency of
 Hancock
 Surplus Outlet
 Swift True Value Hardware
 Talk of the Town
 Tervo Agency
 Thurner Bakery
 Bruce J. Trusock
 Turnquist, C.P.A.
 Twin City Tire Company
 Twin Lakes Resort
 Ultramatic Data Processing
 U.P. Engineering Company
 Vacationland Motel
 Calvin Waisanen, D.D.S.
 Weber's Sporting Goods
 West End Grocery
 Wickley Insurance and Real
 Estate
 WLUC TV 6
 Wooden Nickle Arcade

Again, thanks to all those
who helped!

Blue Key



If I were...
 an ice sculptor • or a broom ball pro,
 a rookie skit performer • a hockey (hopeful) star,
 the queen of the hill • the hairiest thing to inhabit campus,
 a mad Michigan bocci ball boy • a budding muralist...



If I were any and/or all of these,
 I sure would deserve a pat on the
 back for giving the university and
 Houghton a much needed
 mid-winter shot in the arm.
 Love & Kisses from the bottom
 of our Pizza-Piggin' Epicurean
 Lovin' hearts.

*The Library Bar
 Restaurant*

Downtown Houghton

LAZZARI'S

Special Market
 For Your Convenience
 Monday thru Sunday
 9 a.m. - 11 p.m.



**"HAPPY WINTER
 CARNIVAL"**

Meet Us For Good Meats!

482-3280



College Motel

SERVING MICHIGAN
 TECH UNIVERSITY.

ROOMS OVERLOOKING

PORTAGE LAKE

CALL
 482-2202

NEAR ISLE ROYALE
 NATIONAL PARK
 HEADQUARTERS

- MEETING ROOMS
- LARGE FAMILY UNITS
- 24 AIR CONDITIONED UNITS
- COLOR CABLE TV
- DIRECT DIAL TELEPHONES
- GOLF COURSE NEAR MOTEL



1308 College Avenue, Houghton, Mi 49931

Carnival is a Magical Time at Tech

by LAURIE ISAACS
Copy Editor

There's magic in the Copper Country, and Winter Carnival seems to make it all come alive. There's beauty in the countryside, there's beauty in the ice statues, and there's beauty in the laughing faces that Winter Carnival brings out. Hoards of family and friends flock to Michigan Tech to partake in the festivities and cheer on loved ones who gallantly persevere at academic pursuits here in the Great White North.

The 1985 Winter Carnival theme is "Classics Brought to Ice." It's unbelievable how much artistic imagination and creativity this high-tech university quietly harbors; visitors sometimes stare and blink in surprise at the wonderful ice creations that Tech students have carved.

Snow Statues are the most recognized element of the festival--they have brought the university international notice in the past. The most famous statue of Carnival history was carved in 1969 by the Theta Tau fraternity. This creation depicted Charles de Gaulle towing away the Statue of Liberty on a raft, and was entitled, "Da Gall of Dat Guy." This statue's political comment reflected the attitude of the nation and fitted neatly into that year's Carnival theme, "Ice-Terical History."

Winter Carnival springs from 1922, when the "Michigan College of Mines," as Michigan Tech was then called, staged a one night ice show. This early version of Carnival featured circus-type acts, complete with "animals" (Tech students, of course). The ice show was so enthusiastically received that it was decided to make it an annual event. For a few years it actually performed "on the road," earning money and publicity for the school. Each year the show has been developed, with events being cut, changed, and added.

Carnival came perilously close to suffering an early death in the wake of the Great Depression. For four years, from 1929 to 1933, there wasn't any attempt to stage the show. Finally, in 1934, Blue Key stepped in and revived the expiring tradition. From that point forward, Blue Key has sweated, toiled, and bled every year to sponsor and organize the Carnival festivities. It's a year long task--about 2 weeks after this Carnival is over they will start organizing and preparing for next year's Carnival.

Some enterprising Techmen decided, just for grins, to sculpture in snow for the 1936 Winter Carnival, and Wa-lah! a tradition was born. Today the statues are one of Michigan Tech's claims to fame, and student organizations spend a month building them, literally tossing hundreds of study hours out to the snow. The competition is fierce as organizations brainstorm to out do each other on statue ideas and feverishly (as feverish as you can be in sub-zero weather when working with slush and snow) work to make those ideas into king-sized awesome creations.

Winter Carnival is definitely the fun time at Michigan Tech. Not only do students make the towering snow statues, but organizations compete in a zany and entertaining skit competition and in special events such as broomball, skiing, skating, snowshoeing, and a dog-sled race (with more Tech students as animals, of course). Organizations sponsor Queen candidates, and one lovely and talented woman is chosen to reign over the week-long festivities of Carnival. Our Winter Carnival Queen has the special job of going down to Alabama for the University of Alabama's Homecoming and representing Michigan Tech there next fall, while the University of Alabama's Homecoming Queen joins us this week for our festivities. Carnival also features such delights as fireworks, a torchlight parade, the Sno-Ball, balloon rides, sleigh rides, the MacInnes Cup Hockey Series, and wall and door murals painted especially for Carnival in Wadsworth and Co-ed Halls. Surely there is something here this week to delight, entertain, and impress everyone.!



Pictorial Photo/Photo Services

The Queen Candidates are



Bridget Brennan
Senior
Mathematics
Alpha Delta Alpha



Beth Christensen
Sophomore
Chemical Engineering
Lambda Chi Alpha

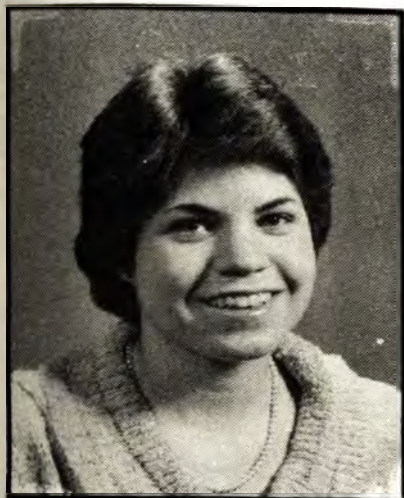


Christine Chapman
Senior
Business
Alpha Gamma Delta



Lisa Heid
Senior
Electrical Engineering
and Mathematics
Delta Sigma Phi

full of Carnival Spirit



Michelle-Anne Irmen
Post-Grad
Civil Engineering
Society of Women Engineers



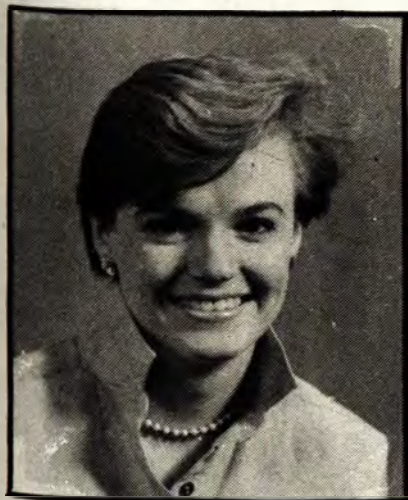
Laura Monge
Junior
Bio-Medical Engineering
Theta Chi Epsilon



Beth Kasper
Senior
Metallurgical Engineering
I Pi-cubed R



Margaret Pinkava
Junior
Medical Technology
Sigma Pi



Karen Laursen
Sophomore
Mathematics
Phi Kappa Tau



Marcia Szewczyk
Senior
Chemistry
AIChE/ACS-SA/PLU



Pictorial Photos/David Baxter

Three of jazz's classiest artists, Duke Ellington, Louis Armstrong, and Benny Goodman, were combined into a clarinet jazz scenario by Michelle-Anne Irmen. The "Impossible Dreams" and surviving memories of a young girl turned middle-age are played out by Christine Chapman.





Lisa Heid played selected songs from the Broadway musical "Annie." for her talent competition.

Bridget Brennan enacted a portion of Erma Bombeck's book, "If Life Is A Bowl of Cherries, Why Do I Always End Up with the Pits?"

As Schroeder, Margaret Pinkava played the familiar Peanuts Theme and two classic Beethoven numbers.



Pictorial Photos/David Baxter



The self-composed song for flute "Hidden Emotions" was performed by first runner-up Laura Monge.

Putting the queens at ease before their performance was the responsibility of Professor Harley Sachs.

Turning a movie theme into fluid movements was Beth Kasper with her dance routine "Jazzing to Jaws."



Pictorial Photos/David Baxter



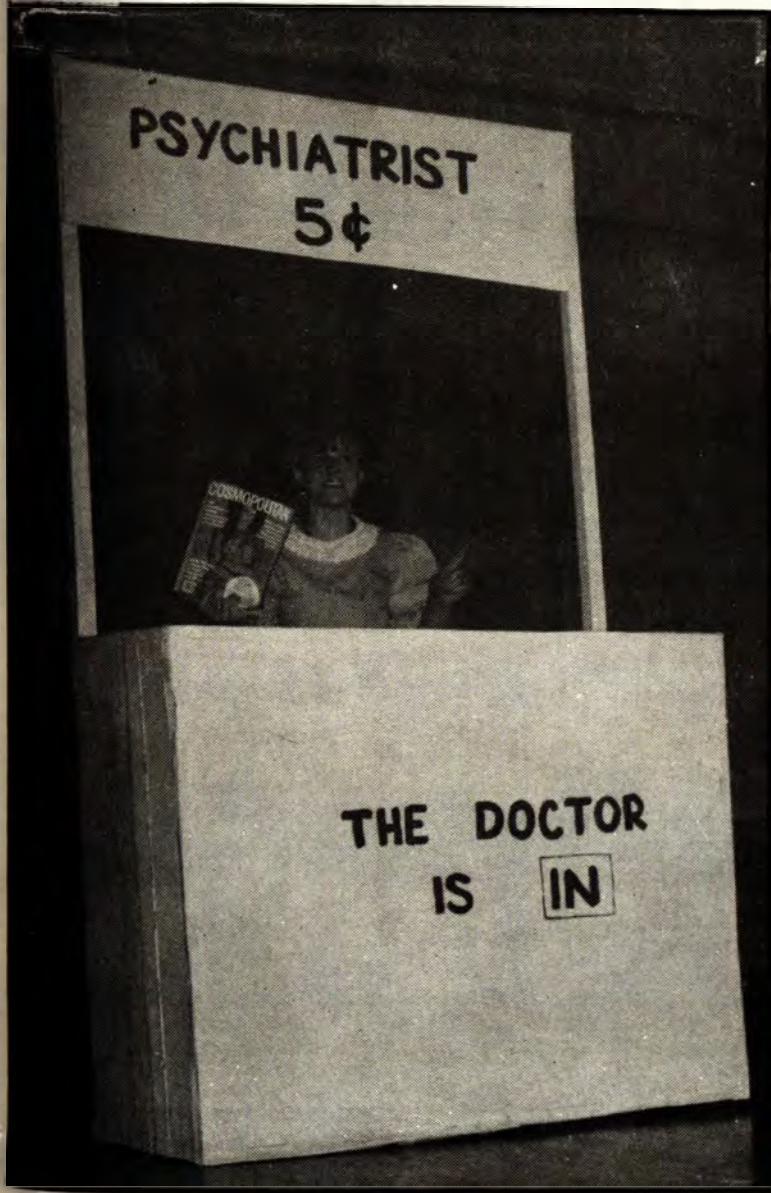


A classic love story, Lucy and Schroeder, was re-enacted by Karen Laursen, as she portrayed Lucy in this Peanut's romance.

"Baroque and Blue," an incorporation of both classical and jazz styles of music was performed by Marcia Szewczyk on the clarinet.



Pictorial Photos/David Baxter





Pictorial Photos/David Baxter



While the judges tallied the scores of the ten queen finalists, the dance troupe "Jazzin" kept the audience entertained.

Everyone could relate in part to Beth Christensen's monologue "First Dance." It brought back memories of that classic first prom.

Last year's first runner-up, Sandy Ferrol, performed one final time for a Winter Carnival audience.



Christine Chapman is the Reigning Queen

by SHERRY THOMAS
Staff Writer

On the evening of January 26 it might have been cold outside, but no one noticed inside the Hancock High School auditorium. Everyone was eagerly anticipating the moment when the 1985 Winter Carnival Queen would be announced.

The competition had already been narrowed to ten finalists. These ten talented young women would be competing in the last phase of the Winter Carnival Queen Competition, the talent presentations.

The talent was as individual as were the young women. They sang, danced, played the piano, the clarinet, and made people laugh. The evening was over all too soon. The final moment was here. Skirts rustled and eyes sparkled with excitement as Professor Harley Sachs, the Master of Ceremonies, began to announce the judges decisions.

Miss Congeniality! Bridget Ann Brennan! Bridget was voted by the other finalists as being the easiest to get to know and to be with. Second Runner-up! Karen Laursen! Karen charmed the audience with her portrayal of Lucy, the boisterous character from the Charlie Brown comics. First Runner-up! Laura Jean Monge! Laura played a piece of music that she composed herself on her flute. And, at last, the 1985 Winter Carnival Queen! Christine S. Chapman! Christine had the audience laughing along with her as she acted out a comical skit of a woman, many years married, cleaning out her attic of forgotten memories. Smiling, she steps forward to receive her crown. Dean Harold Meese escorts the excited new queen from the auditorium. Christine says she's really excited about being chosen as Winter Carnival Queen and that she feels that it's "really something special."

Congratulations to all the women who ran for Winter Carnival Queen! They're all really something special.



Pictorial Photos/David Baxter



The Michigan Tech LODE...

The next best thing to being here!



For only \$8⁰⁰ a year, your family and friends can enjoy reading the MTU campus newspaper, the LODE.

Send a LODE subscription to :

Name: _____

Address: _____

Bring this coupon to the Lode office, Room 122 M.U.B. or mail to: Michigan Tech Lode, 122 Memorial Union Building, Houghton, MI 49931.

300 Pearl St.
Houghton

482-4080

Open 7 days
a week

The store
with the
red carpet
service.

and now... **Jim's Too**

Area's most
beautiful
and spacious
super
market

✓ Beer
✓ Wine
✓ Liquor

food
art

Pine Ridge Professional Building
402 Sharon Avenue Suite A
Houghton, Michigan 49931
906-482-8600



Family Dentistry

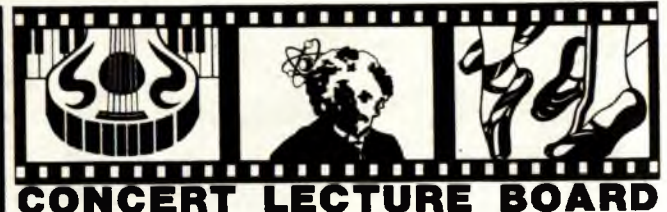


Supporters of MTU Winter Carnival

Calvin N. Waisanen, D.D.S.

Ruth Almli-Waisanen
Office Coordinator

Terri L. Stover
C.D.A., R.D.A.



CONCERT LECTURE BOARD

PRESENTS

UPCOMING EVENTS

Carillon Concerts—John W. Carillonneur
Fri.-Sun., Feb. 1-3, Noon-12:30

Ballet Gran Folklorico de Mexico
March 14

Acting Company, "As You Like It"
March 22

Acting Company, "By The Skin of Our Teeth"
March 23

Dr. Donald Johanson, Anthropologist (LUCY)
March 26

Chicago's SECOND CITY
April 13

Sonny Rollins Concert (Tentative)
April 19

Spons. by
CCE/CLB

CCE/CLB

CCE/CLB

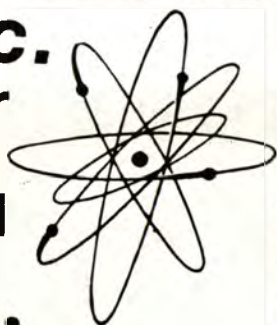
CCE/CLB

CCE

CLB

CLB/MUB

Techtronics, Inc.
 400 Sheldon Center
 P.O. Box 41
 Houghton, MI 49931
 (906) 482-6887



.....
 Radio Shack dealer
 TRS-80 Computers & Supplies
 Electronic Parts & Components
 Telephones & Accessories
 HP Calculators
 Bishop Graphics Drafting Supplies
 Herald Audio Speakers
 Car Audio

THE SUPER REFRESHER



HANCOCK BOTTLING CO.
 HANCOCK MICH. 482-3701

Best Wishes for Winter Carnival Have a Great Time!

from

Roy's Pharmacy
 606 Sheldon
 Houghton
 482-0350



*The Pro Shop located in the SDC Ice Arena
 has Michigan Tech memorabilia that can
 make your Winter Carnival a complete
 success.*

*To make shopping more convenient, the
 Pro Shop now has a brochure featuring:
 Fashionable sportswear, souvenirs, and
 gifts.*

PHONE: (906) 487-2578
 -or-

WRITE: SDC Pro Shop
 Michigan Technological University
 Houghton, MI 49931

★ We can mail you your lifetime ticket to
 Michigan Tech souvenirs.



Best Wishes
 for an
 Enjoyable
 Winter Carnival

from
**Dick's Red Owl
 Friendly Food Store**
 Hancock



On U.S. 41 2 mi.
 South of Campus



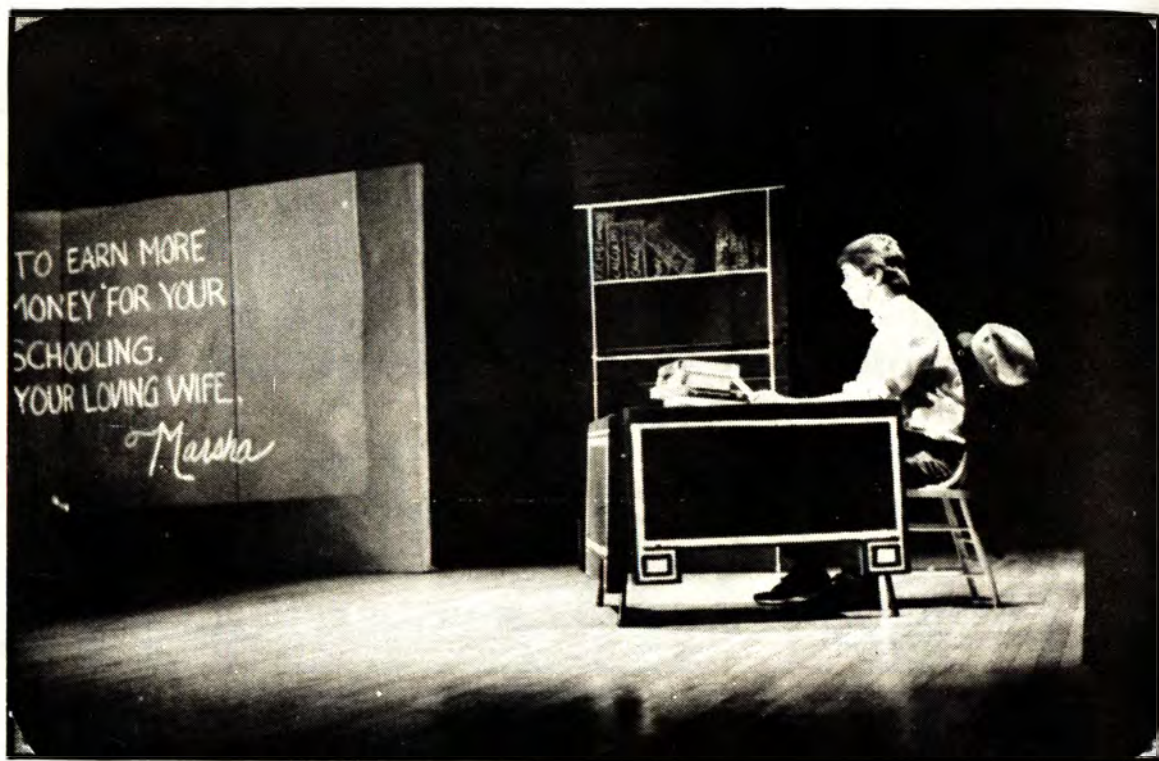
**WELCOME TECH
 FAMILIES AND FRIENDS!**

★ **All major credit
 cards accepted**



(906) 482-5351

Your Hosts: Bob & Jan Wieber



Pictorial Photos/David Baxter



EDUCATING JOHN

top Lambda Chi Alpha's silent skit, *Educating John*, separated John and Marsha, the star-crossed lovers. While John is away at school hitting the books, Marsha is home with the baby. Occasional letters are their only communication.

above Hard times--Marsha and the baby are forced to move to the foreign professor's house...a step towards Marsha's chorus line career.



Zany Skits are Classic to Carnival



Claire Berger, host of the Winter Carnival Skit performances, has a long list of comedy achievements. Berger started out with Chicago's "Second City" comedy company, much like John Belushi, Bill Murray, and Joan Rivers. Her 'observational' humor gained her nomination for an Emmy award in 1983. Berger currently is writing, producing, and acting for television and films. She also is the host of "Claire & Co." on WKQX (FM101) in Chicago.



Pictorial Photo/David Baxter

by ANNE STURTEVANT
Staff Writer

'Twas a night during Carnie and all through the House,
The audience was stirring, waiting for another skit to be announced.
The Kamikazees were flung into the Wind Tunnel's cold air,
And hoped that Spring Thaw soon would be there.
Lambda Chi's baby was nestled all snug in his bed,
While visions of foreign professors and chorus lines danced 'round his head.

And Madge in her wig, and Melvin setting a trap,
Had just counted his money before a *Twice Ice Zone* mishap.
While up from the sand there arose such a "lady oda lady oda lou,"
The dunes filled my heart, and the Locust Motel, too.
And Scrooge on the crust of the new fallen snow,
Said "humbug" to Bogey, Duke, Holmes, and Hoss off the
"Bonanza" show.

Malice's Luscious was so lively and quick,
Bent Fork's repairmen didn't know they'd been hit.
Beaten, strangled, electricuted--Mortis his name,
Re-creation of the crime was Delt Sig's "elementary" game.
Somewhere over the Mackinac to find M.T.U.
Virgin Snow helped Flakey, her friends, and her little duck, too.



Pictorial Photo/David Baxter

above right "Someone's at the door" in Douglass Houghton Hall's skit, *Malice*. The evil JD arrives to gloat over plans for a new McDonald's after the orphanage foreclosure.

above "The test goes ever on" as Bent Fork's men showed off their Southern hospitality and their cowboy boots.

CLASSIC ANSWER TO A WINTER DISASTER

right Bogey, Holmes, and Watson try to assist the fair little girl and her faithful doggie in their attempt to find fun again. The doggie is giving Holmes the sniff-test.

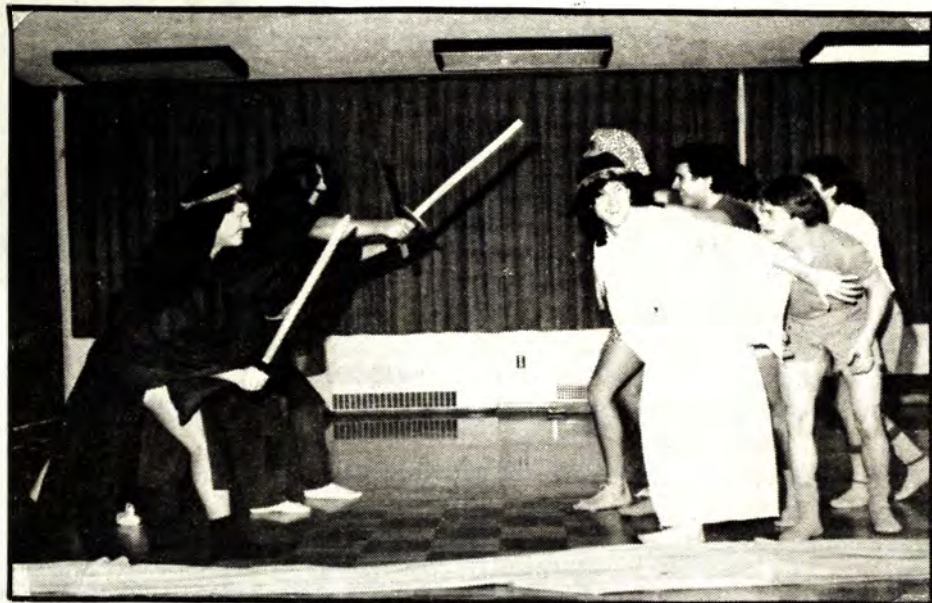
bottom right Beta Sigma Theta's Scrooge and Igor plot the ultimate crime - removing fun from winter. Igor is modeling Scrooge's new line of non-fun winter apparel.

below The Duke and Hoss join the cause to convince the cold-handed Scrooge that fun in winter is socially acceptable.



Pictorial Photos/David Baxter





Pictorial Photos/David Baxter



THE SOUND OF SAND

upper left "The dunes fill my heart with *The Sound of Sand*. Cleo croons to Tut while sand gets in her eyes.

left "Lady oda lady oda lou," Sigma Phi Epsilon's yodeling narrator is decked out in his best German duds - what legs!

above Cleo saved the day by building the Locust Motel - "where the locust check in, but they don't check out."

GONE WITH THE WIND TUNNEL

bottom right "Toto, this doesn't look at all like Kansas." The Kamikazees fall into step with their favorite TV characters in *Gone with the Wind Tunnel*.

right *Gone with the Wind* being her favorite book, the light-skinned, light-headed professor insists on a 30-page book report - due today. The Stooges and Mae West look on aghast. Kirk finds "no intelligent life forms."

below Groucho, with a flick of a cigar, keeps the Stooges in line.



Pictorial Photos/David Baxter





Pictorial Photos/David Baxter

IT'S ELEMENTARY, WATSON

left "What a mess! Beaten, strangled, even electrocuted!" Delta Sigma Phi's skit featured Mortis in his stage debut. When interviewed later, Mortis just shrugged his headless shoulders and said, "Parts is parts."

below Who dunnit? Could the innocent looking blind man have had a part in the merciless murder of Mortis? Or was it Mrs. Senile, Myron, or maybe the gardner? *It's Elementary, Watson*, they all have "the perfect motive." The icy hearted murderers confessed, "The butler always does it - we had to get him before he got us."



SOMEWHERE OVER THE MACKINAC

right Flakey and her little duck ask Virgin Snow for guidance *Somewhere Over the Mackinac*. Who wouldn't trust Sigma Tau Gamma's baton-carrying, hairy-legged, tu-tued good fairy?

below "This is M.T.U.--no one ever passes classes." The fearless foursome seek the "Great PC." The moral of the skit? Stay away from yellow snow!



Pictorial Photos/David Baxter





TWI-ICE ZONE

left Melvin thinks he'll hear the pealing bells of freedom, but instead, "Sleigh Ride" creeps into his head.

below Madge's perplexion over escalators ("What do they do when the basement is full of stairs?") leaves the audience wondering if she hasn't already stepped into the *Twice Ice Zone*.

bottom left Melvin Mudson insists that "it's all in your mind." Delta Upsilon's devious husband plots to drive Madge, his incredibly loving (incredibly rich) wife, to the looney bin.

Pictorial Photos/David Baxter



The All-Nighter...



Pictorial Photos/David Baxter

1st Place One Nighters I Pi-cubed R

2nd Rammitt Inn

3rd MTU 4 Wheelers

4th 2103 A Daniel Heights

5th Broadway House



Pictorial Photo/Jim Hollenbeck



Pictorial Photo/Jim Hollenbeck



Pictorial Photo/Jim Hollenbeck

1st Place Downtown Statues The Downtowner

**2nd Downtown Houghton
Business and Professional
Association**



Pictorial Photo/David Baxter

A Tale of Two Statues

by LAURIE ISAACS
Copy Editor

It was the best of times, it was the worst of times. The wind howled in our ears and our fingers were numb past the point of pain. We had that strange sense of fellowship, teamwork, and camaraderie that only comes in the homestretch of a survived disaster. It was 6:00 a.m. and *our* statue was going to be one of the best creations to ever hit this campus.

We had suffered through the cold and finally got to the homestretch--then, horror of horrors, gravity struck, and our statue's head fell off. My friend Reg was working on it, and she actually cried. We dosed her up with some hot chocolate and schnapps, and started building another slushball for a head.

Across the path, not less than 100 feet away, competing statue builders worked on their ice sculpture. They were in the final stages of work; they hauled out irons and extension cords, and began ironing their statue. Every now and then they glanced our way, with looks both sympathetic yet a little smug.

Success! The slushball stayed this time, and we had a head. Reg beamed tipsily. We, too, had irons, and as the slush froze into ice, we ironed out all the wrinkles and bumps in our statue. We'd prepared even further than that--we plugged in our soldering irons, pulled out some knives, and went to work on the slushball's face. Pretty soon it was grinning lopsidedly back at us. As a final touch, we placed the carefully sculpted and brilliantly colored jello letters of our organization on a snow platform in front of our masterpiece.

Here our opposition was having troubles. Their letters cracked and crumbled. Now it was our turn to be a little smug. We ironed out all the bumps in our jello letters, and I heard one of them mutter, "how did they get such good letters?"

Bring on the judges! Jello will do it every time!



Pictorial Photos/David Baxter

Christine Chapman, Lisa McEniry - University of Alabama's Homecoming Queen, and Sandy Ferrol - 1984 Winter Carnival First Runner-up warm themselves on a bitterly cold night as they tour the statue construction sights.

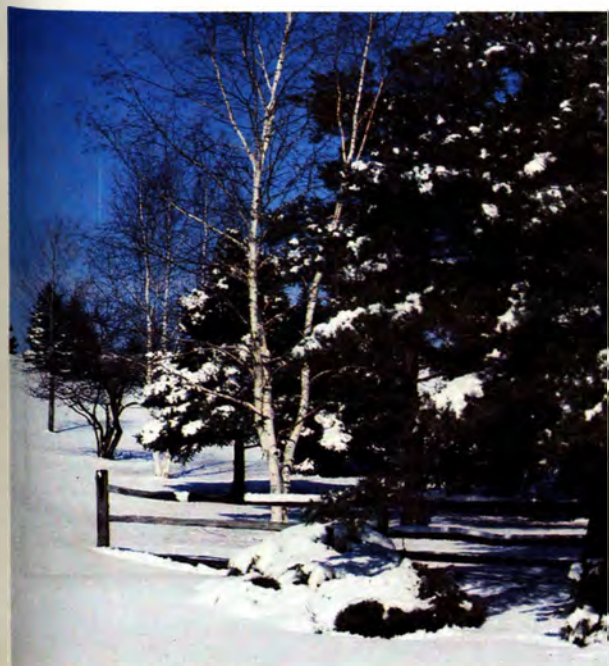
The 1985 Queen Candidates enjoy a campus sleigh ride.





**Michigan's
Keweenaw
Peninsula
is a
picturesque
winter
wonderland.**

Pictorial Photos/David Baxter





Pictorial Photos/David Baxter

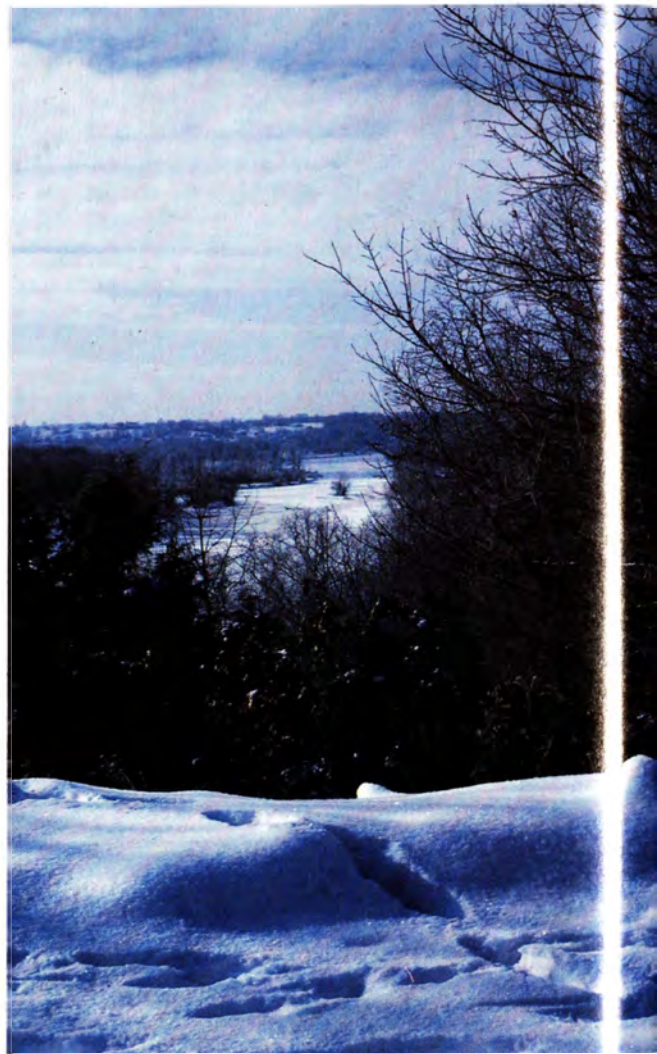


The Keweenaw is the home of Michigan Technological University where many student activities are academic in nature. But in the dead of winter, when most people hibernate, we close our books and celebrate in the snow.



Pictorial Photos/David Baxter

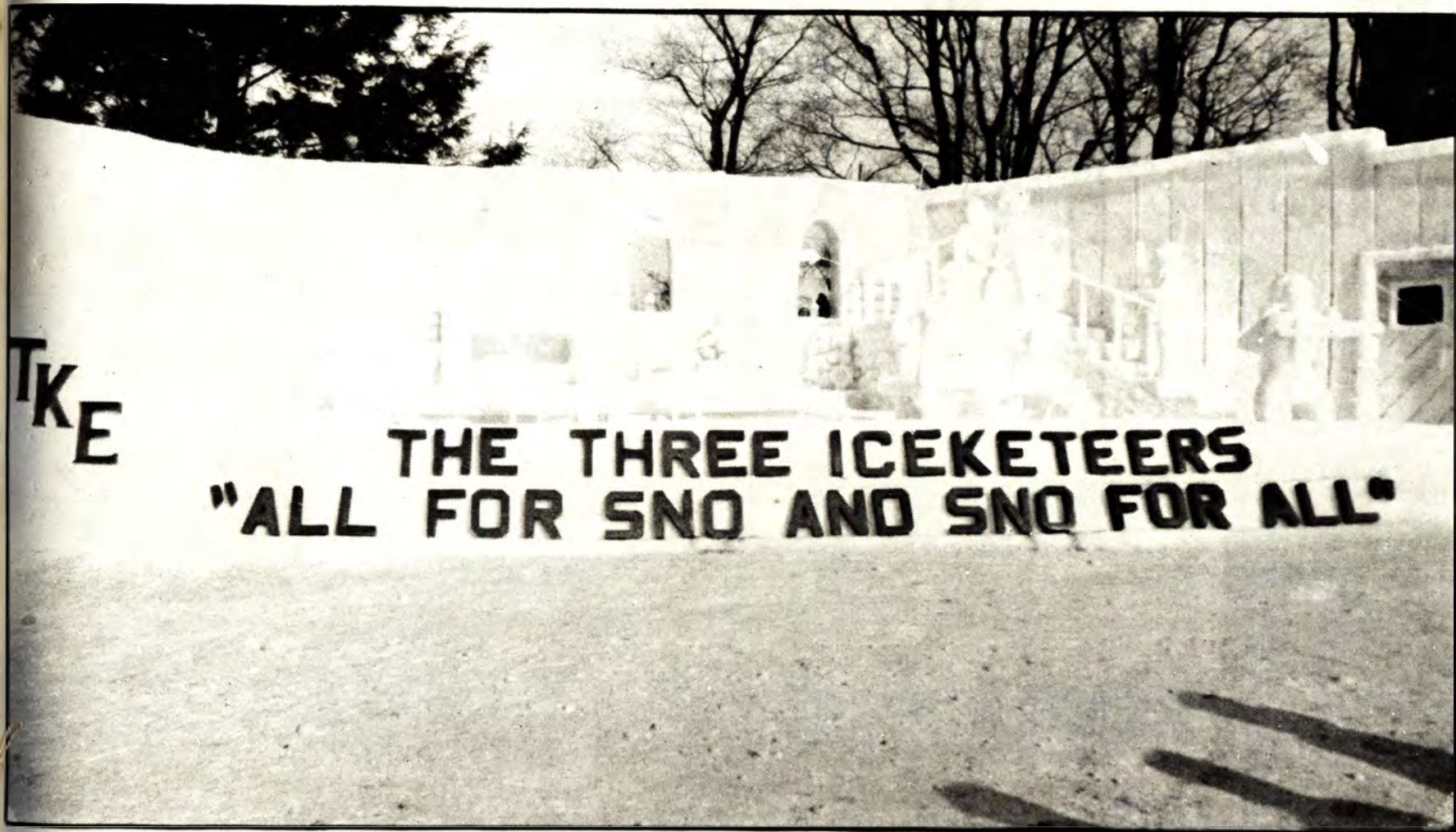




Pictorial Photos/David I. axter



Snow Statues are Tech's Claim to Fame



Pictorial Photos/David Baxter



1st Place Class A Tau Kappa Epsilon

The Three Iceketeers All For Snow and Snow For All

Frozen in time before you, is a scene from Alexandre Dumas' classic novel, "The Three Musketeers". In this frigid scene, D'Artagnon and the Three Iceketeers are rescuing the Queen's messenger from Cardinal Richelieu's guards. The setting for all this sword play is a Parisian tavern. Aramis and the Queen's maid are being accosted on the balcony, while Porthos defends himself against two cold-hearted mercenaries. A pair of merry customers watch as D'Artagnon matches icy steel with his opponent. Near the bar, Athos sends one of the henchmen to an arctic grave with a piercing thrust. Paying little attention to the fierce battle around him, is a joyful musician performing on the stage. Also unaffected by the fighting, is a cat coolly stalking a mouse.

The Legend of Mickey Mouse Begins

Back, in days of pencil moustaches and marcel hairstyles, people from all walks of life frequented the local Drive-In to momentarily forget the harsh realities of the Great Depression. It was at this time the revered cartoonist, Walt Disney, gave birth to a mouse named Mickey - in the film, Steamboat Willie.

Nestled in the hills of the Copper Country, Phi Kappa Tau has re-created the early years of Mickey Mouse and the Drive-In Movie Theatre. The cars in attendance tonight: a 1932 Ford Cabriolet, Ford Pick-up, and Chrysler Landau sedan; like Mickey, are now considered to be classics.

So flip up your rumble seat, put down the rag top and let the show begin!

2nd Place Phi Kappa Tau



Pictorial Photo/David Baxter

3rd Place Delta Sigma Phi

Laurel and Hardy in "Another Fine Mess"

As we look upon the early years of the motion picture industry, we find the ever-popular classic duo of "Laurel and Hardy". So let your mind wander back in time to this busy street and set this scene in motion.

As we look to the right the action has already begun. Some local gangsters are robbing the city bank! However, these hoods won't get far thanks to the quick action of the ever-ready and alert Keystone Kops. They arrive on the scene to find themselves in an ever-classic predicament. Their paddy wagon has stalled, not just anywhere, but on the trolley tracks.

Throughout the commotion, life goes on. The organ grinder is still playing for a few pennies, and the old wino continues to drink his favorite vintage. But, as we can see, the fruit stand is a shamble.

In the midst of this fine mess, Laurel and Hardy feel safe, but are they? So grab your ticket and pass through our turnstile of time.

4th Place Sigma Tau Gamma

Classic Lines - That Changed Our Times

From the first moment the men and women of America had a dream of being free, to the present time, there have been leaders who have guided the people with their words; have provided leadership, wisdom, and courage to the people of America. The men and women depicted in this statue have made great contributions to the shaping of the ideals this country was founded on: Freedom, and the belief that all men are created equal. These ideals allow anyone, of any age or race, to make their dreams become reality.

The men and women of this statue have spoken the words that have shaped this great country, and have made the path easier for future generations to follow.



Pictorial Photo/David Baxter

5th Place Phi Kappa Theta

"That's Snow Way to Catch a Whale"

Legend has it, Moby Dick came northward to avoid Captain Ahab and his crew. However, Moby Dick knew he was followed, and eventually stopped the chase by confronting Ahab's ship. The result is clear to those who view this chilling scene. Ahab and his crew struck the first blow with a harpoon, but this only angered the great whale. In the struggle, Captain Ahab become helplessly entangled in his lines when his ship was split in two by a blow from the mighty whale's tail. The long boat crews were also thrown into the icy sea. Captain Ahab's relentless pursuit led his crew to an icy death. Moby Dick will finally melt back into the depths of the sea; never to be seen again.

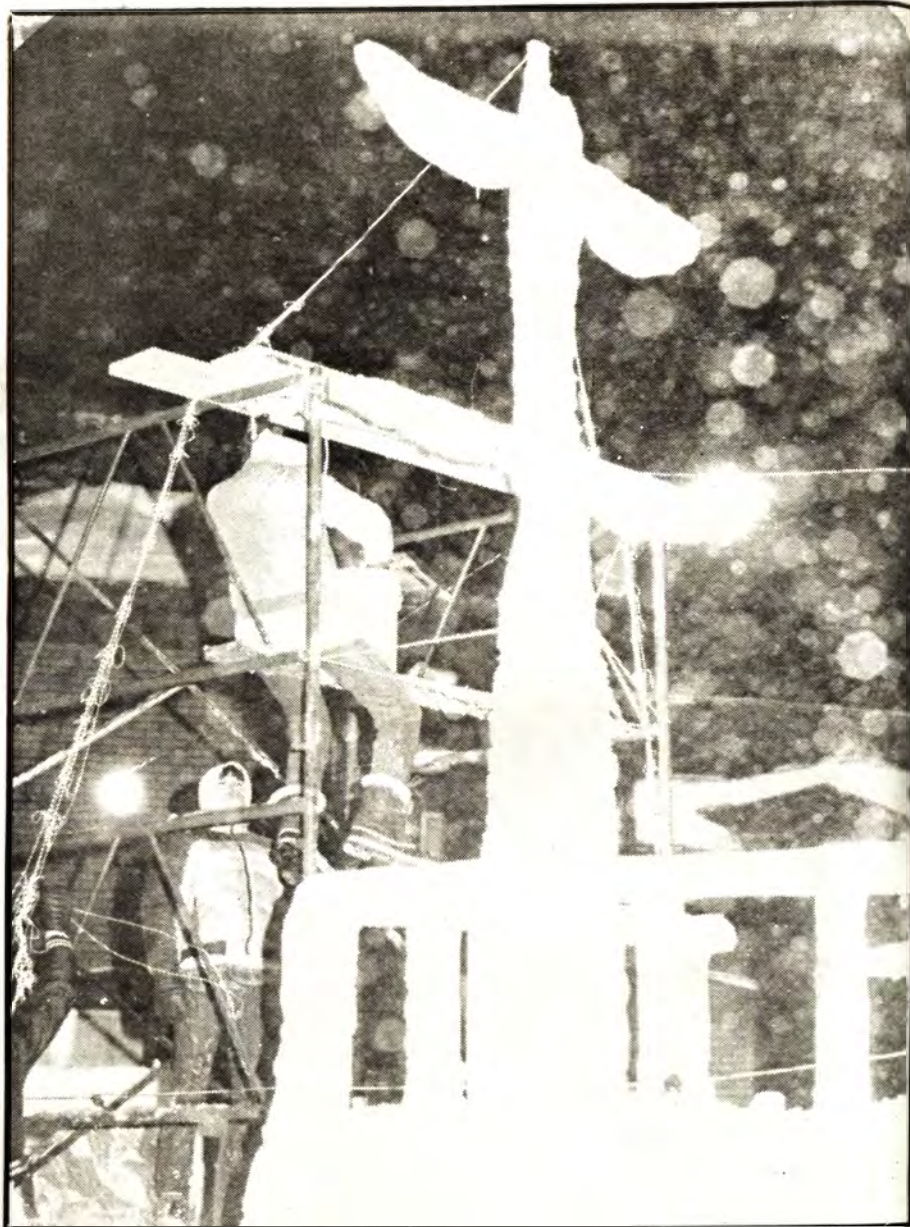


Pictorial Photo/Jim Hollenbeck

Class B 1st Place Sigma Pi

"Mutiny on the Ice-Bound"

Instead of taking his crew to the Bahamas, as previously promised, Captain Lie decided to divert the crew of the "Ice-Bound" northward. The crew will soon journey to their promised land as soon as they dispose of Captain Lie. Notice the freezing crew members (wearing bathing suits) in total anger, as Captain Lie makes for a quick departure in the Life-Sled. The masts and crossbeams are supported by two-by-fours, and the line is made out of string.



Pictorial Photos/David Baxter



Beethoven's Fifth Year

Schroeder, of "Peanuts" fame, has grown up! Now he is battling a rigorous schedule at Michigan Tech, instead of avoiding the amorous advances by Lucy. Here, he takes time from the never-ending studies to relax at his piano. Atop the piano are his textbooks and Schroeder's second most prized possession - a bust of his hero, Ludwig Von Beethoven. Schroeder performs a work which he wrote to express his love of Beethoven's compositions, and his busy life at Tech. He based the musical piece on Beethoven's immortal Symphony No. 5 in C minor, but with a twist - Beethoven's Fifth Year!!

2nd Place Alpha Phi Omega



Pictorial Photo/Jim Hollenbeck

Upper Peninsula Gothic

Unknown to most, the classic painting - "American Gothic", by Grant Wood, was inspired by a painting done by an Upper Peninsula artist - Arvid Hautamaki. Shown here is Arvid's depiction of a typical Upper Peninsula couple - Eino and Ina Kemppainen.

The couple is waist deep in snow, but Eino has his favorite snow shovel to solve that problem. The ice skates draped around Ina's neck won't do her much good in this snow, and her face shows her disappointment. Eino does not look too thrilled with the task of shoveling he has in store.

3rd Place Eden House



Pictorial Photo/Jim Hollenbeck

4th Place Sigma Kappa Upsilon Mu

Liberty and Just-“Ice” for All

A gift from France, the “lady of the Harbor” has stood watch over the gates of one of America’s greatest cities, welcoming immigrants from around the globe for years. Almost a hundred years old, the lady decided that she should see a few more of America’s great cities. She packed her bags and headed to the great white north. Stopping in Houghton, she decided to stand watch over Michigan Tech’s Winter Carnival, being that Tech is in its centennial year.



Pictorial Photo/Jim Hollenbeck

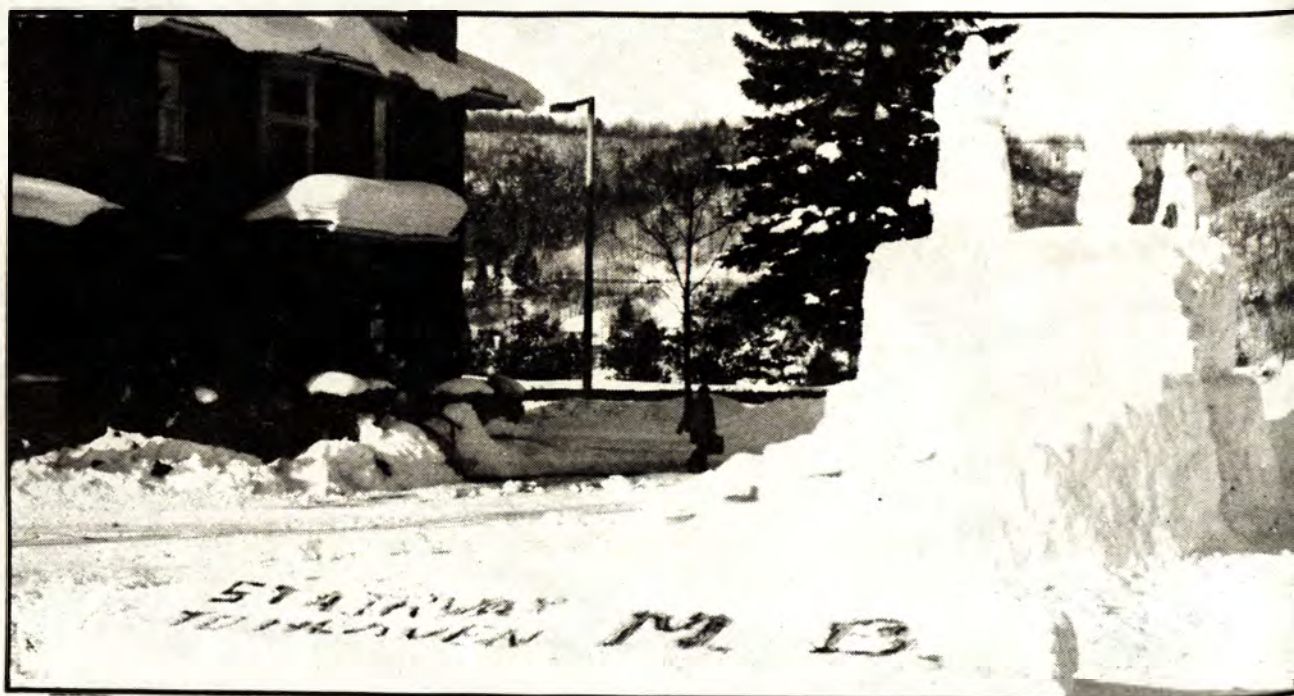
Stairway to Heaven

Frozen in an icy hieroglyph are the characters of the classic, Stairway to Heaven as a reminder that all that glitters is not gold.

The tale is written of a lady of wealth who, searching to buy her way through life, convinces herself of the stairway and its promise. This thought becomes her piper.

Enthralled in the piper’s music, the lady blindly follows him up the stairway. The melodic lines fill her head and seem to promise that a day will dawn when the forests will echo with laughter. At the summit the Oracle stands waiting, bearing the light of reason, which will reveal that the stairway does not exist. With him are the Mama’s Boy and his ever faithful Husky knowing the truth of the stairway.

5th Place Mama’s Boys



Pictorial Photo/David Baxter

Macbeth's Icy Destiny
"Double, double, toil and trouble."

These were the words spoken by the witches as they prophesied that Macbeth would soon be king. The words infected Macbeth to kill Duncan, King of Scotland. Duncan's sons fled and Macbeth took the throne.

Now, as Duncan's sons gather an army to overthrow Macbeth, he begins to fear for his life and once again seeks the council of the three witches.

By the flickering light of the fire we see Macbeth fearfully straining to hear the witches as they utter his fate. The icy stillness is broken as the sisters chant:

"Double, double, toil and trouble; Fire, burn; and, cauldron, bubble..."

1st Place Class C St. Al's Parish



Pictorial Photos/David Baxter



2nd Place Army ROTC

**One Classic Step for Man,
One Chilly Leap for Mankind**

The date of July 20th, 1969 will forever be frozen in time. On this date, three American astronauts; Neil Armstrong, Michael Collins, and Edwin "Buzzy" Aldrin Jr. land the lunar module Eagle on the cold and cratered surface of the moon. As Neil Armstrong proudly plants the American flag in the frigid soil of the moon, the majestic Eagle looms in the desolate background of the Sea of Tranquility.

3rd Place MTU Foresters

Who's Who-o in the Ice & Snow?

As we travel across Tundra Tech, we come upon Smokey the Bear doing what he does best - putting out campfires left by careless campers. Smokey isn't too worried, because here in the North Country there's plenty of snow to prevent the fire from spreading. However, he should be concerned by the partially cut tree that's about to hit his head. Woodsy Owl is nearby watching for polluters and other forest trouble makers. Together, these two classic forest friends have helped keep our forest lands safe and clean, to enjoy. The Foresters of Michigan Tech "salute" Smokey on his 40th birthday!



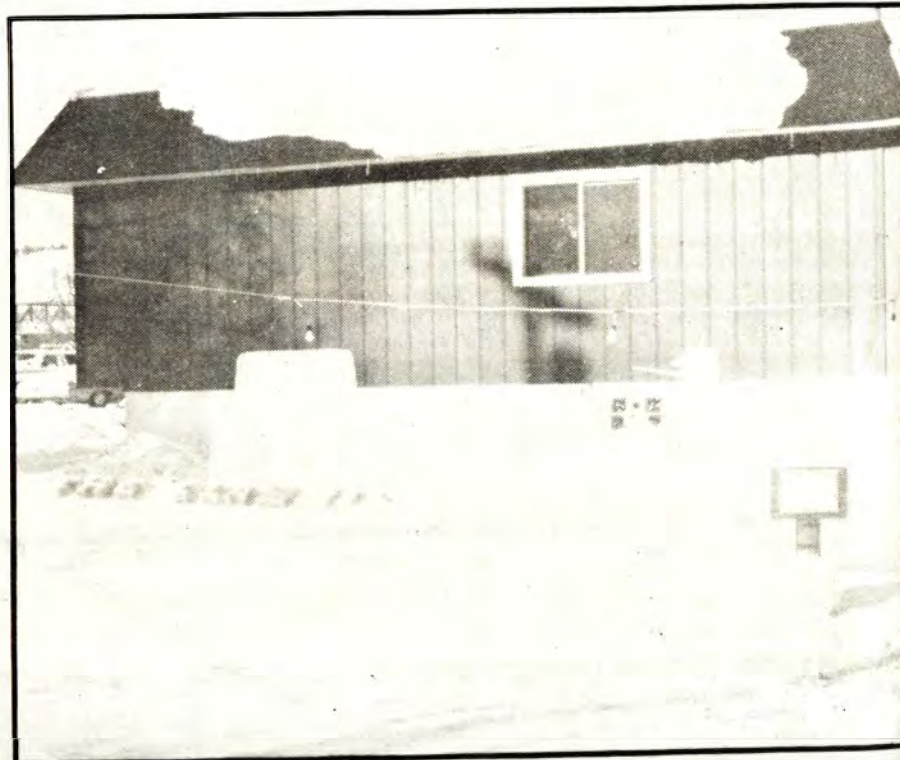
Pictorial Photo/Jim Hollenbeck

4th Place Wesley House

The Classic Vlastic

The men of Wesley House offer for your entertainment a unique and whimsical look at: "America's Favorite Pickle" The Classic Pickle.

We find that famous television personality, the Vlastic stork, stopping off at home for a little rest and a quick snack. Both he and his current delivery are enjoying some chilled baby dills while they watch re-runs of his best pickle commercials on the television. Next to the television is a king-size jar of pickles for the stork's king-size appetite and a monster dill already laid out for him to devour next.

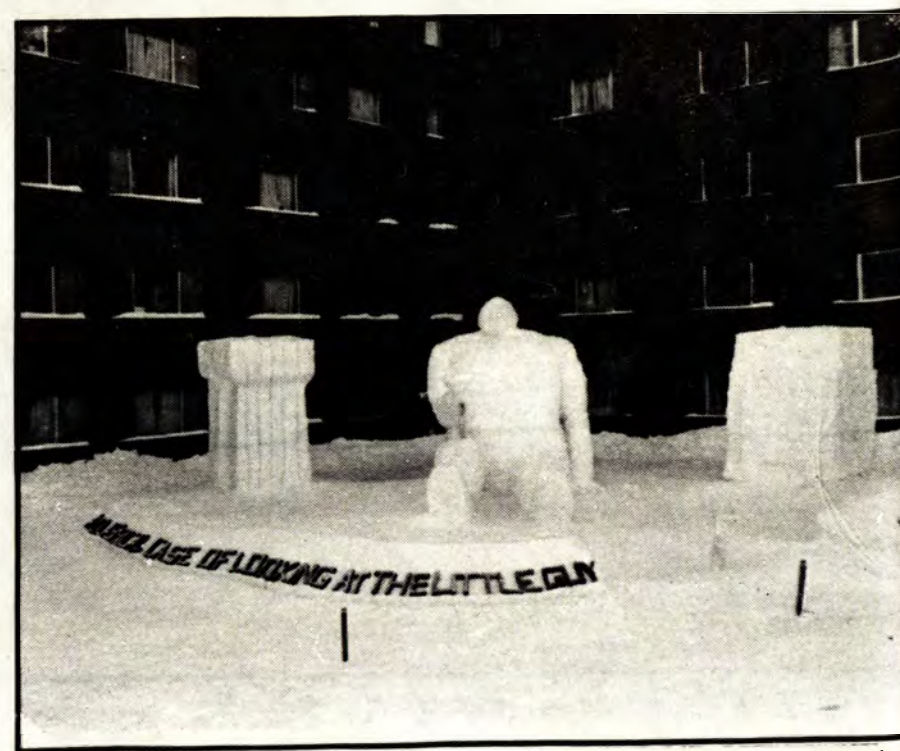


Pictorial Photo/David Baxter

5th Place Oread's Paradise

A Classical Case of
Looking at the Little Guy

Stranded in this Arctic Land, Gulliver's Travels are brought to a freezing halt. He is shown relaxing against the Chem-Met, recovering from his long and tiring journey. Three students, frozen in their tracks, observe Gulliver from a safe distance. Meanwhile, one brave Techian stands alone on Gulliver's palm, each observing the other with a cold stare.



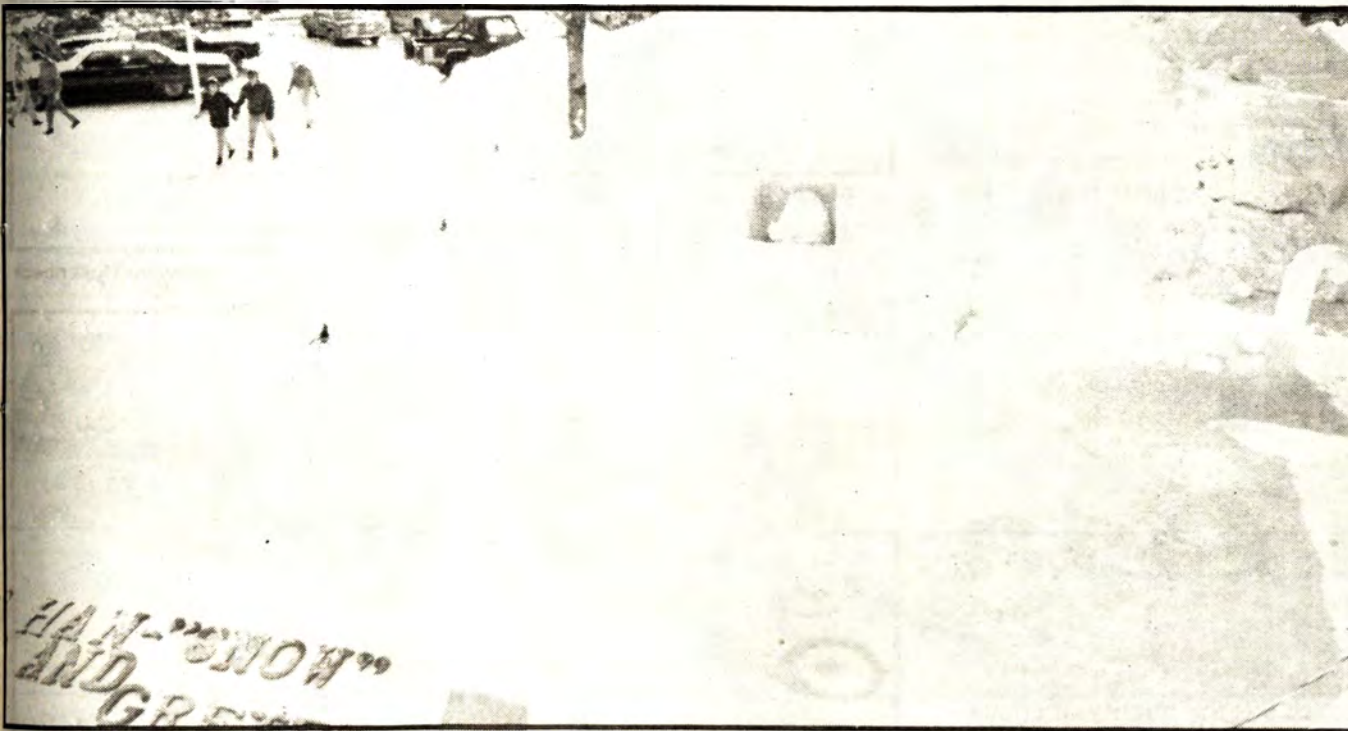
Pictorial Photo/Jim Hollenbeck

Han-"Snow" and Gretel

Wandering far from home, Han-Snow and Gretel become lost in the Northwoods when a winter storm buries their footprints in a blanket of snow. The children follow a beautiful snowbird into the frozen forest. The bird alights on the roof of a small cottage covered with gingerbread and candy. This was a warm, welcoming sight to the two chilly kids. They can't resist when an old woman invites them in....

As the classic German legend goes, these two had better beware because they will find that the kind, old woman is really a witch with ice-water pulsing through her veins.

1st Place Class D Alpha Gamma Delta



Pictorial Photo/Jim Hollenbeck

Al-ice In Snowland

The sisters of Alpha Sigma Tau invite you to take an icy trip through the looking glass. While traveling through Snowland you might see Al-ice enjoying tea with her friends, the Mad Hatter and the White Rabbit - whose whiskers are iced pipecleaners - or, perhaps you will meet the Queen of Hearts and her guards on one of their many strolls. If you come across the wise old caterpillar, you will find him atop his mushroom stool quietly smoking his pipe of ice and cord. Tweedle Dee and Tweedle Dum may even entertain you with a tale or two. And be sure to look for the Cheshire Cat; he may appear sitting on the ivy-covered wall, constructed of individually formed blocks.

2nd Place Alpha Sigma Tau



Pictorial Photo/David Baxter

3rd Place Grand Central Station

The Cat in the Lab Snows Mad

This was no time to play. This was no time for fun. This was no time for games. There was work to be done. All that deep, deep, deep snow, all that snow had to go. Well there we were. We were working like that and then who should come up but "the Cat in the Hat."

"Oh-oh!", we said. "Don't talk to that cat or let him into the lab. That cat is a bad one that cat in the hat. He plays lots of bad tricks and makes lots of snow. Don't you let him come near. You know what he did last time he was here. The cat in the hat is at a laboratory table making snow while everyone else is trying to clear it away."

4th Place Delta Zeta

100 Years of Great Taste

A wine becomes richer and better tasting with age, so has the quality of education at Michigan Tech. In this statue, the sisters of Delta Zeta express their pride in the growth of Michigan Tech during the last century. To the world of good breeding and the eye of an artist, a bottle of fine wine and single rose express class and good taste. Delta Zeta was founded on high moral standards and good taste. Just as this is symbolized in our sorority's flower, the rose, we wish to extend this symbol to the high academic standards set on this campus. For generations, fine wines such as Rothchild, have been served from brown bottles; just as a superior education has been administered through the brown brick buildings at this university. So, here's a toast to you - M.T.U.- for a great 100 years.

5th Place Corner Pocket

Cinderella and the Ice Slipper

In a frozen kingdom in the Northern U.P.,
There was a young maiden, Cinderella, as pretty as could be.
She was invited to dance at a fancy dress ball,
In the frosty prince's ice castle, nine feet tall.
She had to dash off before the stroke of twelve or be in a muddle,
Because her horse-drawn pumpkin carriage would melt to a puddle.
As she ran from the castle, she left her ice slipper behind
There it was left for the handsome prince to find.
The prince searched and searched in great distress
Because he couldn't find the beautiful enchantress.
The furry mice and coachmen wondered with awe,
Would the prince find his maiden before the Spring thaw?



Pictorial Photo/Jim Hollenbeck



Pictorial Photo/David Baxter



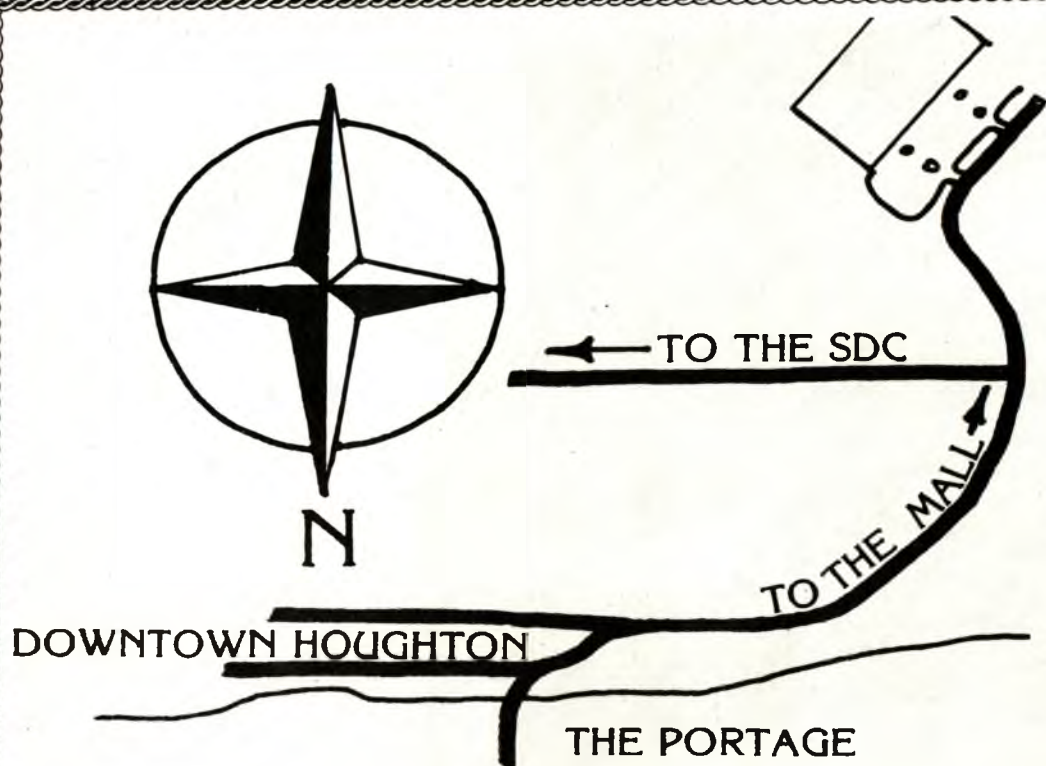
Pictorial Photo/Jim Hollenbeck



Pictorial Photos/David Baxter



Fireworks at 15 below



The Copper Country Mall Has It All!

- ★ climate controlled
- ★ free level parking



Mon-Fri 10-9
Sat 10-5
Sun 12-5

M26 & Green Acres Road, Houghton

A LOT OF CAPTAINS OF INDUSTRY STARTED OUT AS SECOND LIEUTENANTS.

How can you get the experience you need to succeed in business?

These top executives started out as Army officers. Right out of college, they were given the kind of responsibility most people in civilian life work years for.

If you begin your future as an Army officer, you could further your career plans.

How do you become an Army officer? A great way to get the training you need is in Army ROTC.

ROTC is a college program that

will teach you leadership and management skills, and train you to handle real challenges.

If you want to prepare for a promising future in business, begin your future as an Army officer, with Army ROTC. You too might wind up a captain of industry!

For more information, contact the Professor of Military Science on your campus.

ARMY ROTC.
BE ALL YOU CAN BE.



Rawleigh Warner, Jr., Chairman, Mobil Corp.



Walter F. Williams, President & Chief Operating Officer Bethlehem Steel Corp.



Earl G. Graves, Editor & Publisher Black Enterprise Magazine



John G. Breen, Chairman, President & CEO Sherwin-Williams Company



“Playing The Game”

One of the thrills in life is that everyone has a place on the team. Not everybody has a place on an ice hockey team, or in a glee club, or in a dramatic production, or in an exclusive social club; but in the game of life nobody is left out.

Every individual has abilities which are uniquely his or her own. It would be foolish to try to be an engineer if you have no interest in, or capacity for, mathematics. It would be poor judgment to try to become a teacher if you have little or no interest in people. Many fail in life because they attempt to make of themselves what they are not intended to be.

An intelligent evaluation of the needs of the market-place, and of the talents you possess which fit into specific needs, will go a long way in showing you where you belong.

Then it is time to prepare yourself for the opportunity you would like to have. You will prepare yourself physically — caring for your body, making it clean and strong. You will prepare yourself mentally — making the most of every opportunity for study. You will prepare yourself socially — learning to understand and get along with people.

The persons who get the most fun out of any game are those who are fully involved in the contest. It is the same with the game of life. We are all on the team, and our task is to put our best efforts into whatever we do. There is no point in wasting energy envying those who have greater abilities, or have the inside track to favored positions.

In life, you are a member of the team. How you play the game will determine whether you are a success or a failure.

DR. G. ERNEST THOMAS



**F. JOS. LAMB
COMPANY**

MANUFACTURING SYSTEMS WORLDWIDE: MACHINES/METHODS/MANAGEMENT
F. JOS. LAMB CO., WARREN, MICHIGAN 48091

Carnival Competition



Pictorial Photo/Gordon Boyd

Thump, thump, thump, whoosh!!!

Creatures in the dark? Nope. Try some of the more (or less) coordinated snowshoe racers from the Special Events competition.

Special Events are the snowshow race, speedskating events, downhill and cross country skiing, broomball, and the wild and zany dogsled race. This year there is a record high of 125 teams entered in broomball, as Techies shake off their apathy and put down the books for awhile to pursue some of the lighter sides of life for a few days.

All the special events are fun to watch and fun to participate in. The most striking, though, has got to be the dogsled race. In this race, six hearty souls are the "dogs," four people serve as bodies on the sled, and one person runs/pushes from behind.

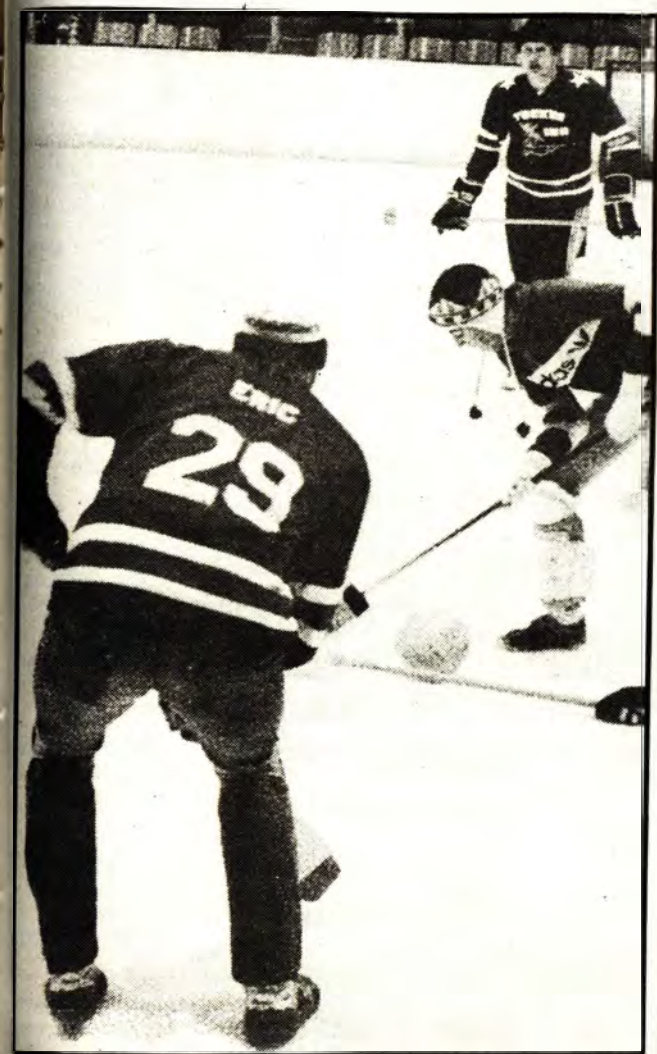
Broomball is another entertaining event to watch. It's a cross between hockey and the Ringling Brother's Circus, as each team struggles to score "sweeping goals" while keeping their feet in contact with the ice, rather than other parts of the anatomy.

Special Events are just one of Winter Carnival's hilarious and exhilarating breaks from the routine of classes and study. They are one small shiney part of the celebration of Winter Carnival.

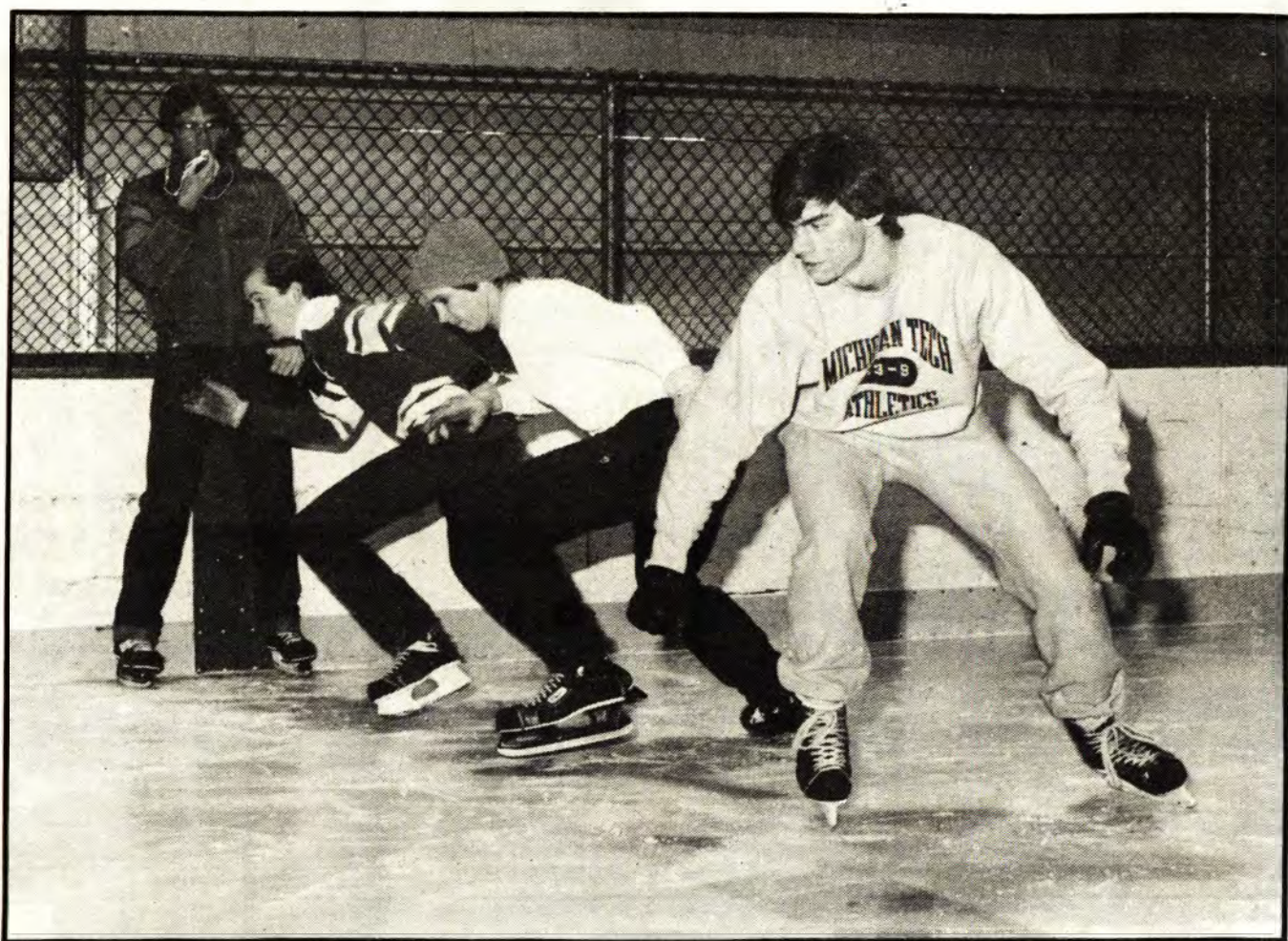


Pictorial Photos/David Baxter

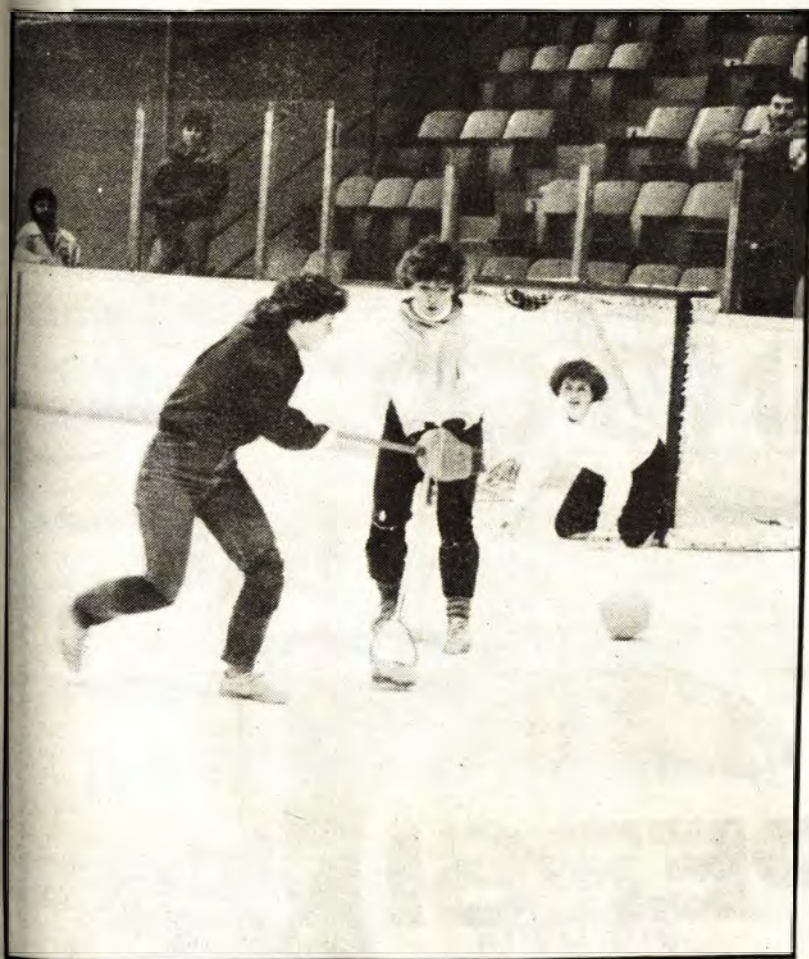




Pictorial Photo/Gordon Boyd



Pictorial Photos/David Baxter



Compliments of...

Standby
FINE
FOODS

Gamble-Robinson Co.

69 N. Isle Royale St.
Houghton, Michigan
(906) 482-3660



**Complete Food Services
to the North Country.**

Crystal Room Lounge



The
Crystal
Room

Lunches - Dinners - Sunday Brunch
Soup & Salad Bar
Seafood - Steak
International Cuisine
Cocktails
Fine Wines

Meeting & Party Facilities
Open Year Round
308 Quincy, Hancock 482-3800

HOUGHTON BOTTLING CO. INC.

With best wishes
for a wonderful
Winter Carnival



Serving the Copper Country since 1922

Worldwide Traveler

No matter, if you're travelling to the ends of the earth; make your travel arrangements with ease

902 College
Franklin Square
482-0324

**PENINSULA
TRAVEL SERVICE LTD**

the **cafe
advocate**

the best (the only) authentic mexican-chinese oriented cafe' in upper michigan celebrating winter carnival! exclusive, eh?

Great Soups & Salads
Sandwiches & Burgers

Tuesday is Chinese night Thursday is Mexican night

800 Sheldon Ave., 482-1991

Sun:4-10 Mon-Thurs:11:30-10:00 Fri&Sat:11:30-12

study

FORESTRY

WHERE THE TREES ARE

at Michigan Tech
amid the
Upper Peninsula's
Beautiful
Forestlands



Alpha Kappa Psi



**PROFESSIONAL BUSINESS
FRATERNITY**

"We mix business with pleasure"

CONGRATULATIONS STUDENTS from the **SCHOOL OF TECHNOLOGY**

Degrees offered:

- B.S. Land Surveying
- A.A.S. Forest Technology
- A.A.S. Electrical Engineering Technology
- A.A.S. Civil Engineering Technology
- A.A.S. Electromechanical Engineering Technology
- A.A.S. Mechanical Design Engineering Technology



We've got a warm spot for you.



If you've got that sinking feeling that this winter may never end. Cheer Up!

Come in out of the cold and into McDonald's. We promise you'll get great hot food, a little extra tender loving care. And lots of warm sunny smiles.

Because, this winter, we've got a warm spot for you.

DownTown Houghton

*McDonald's
& You*

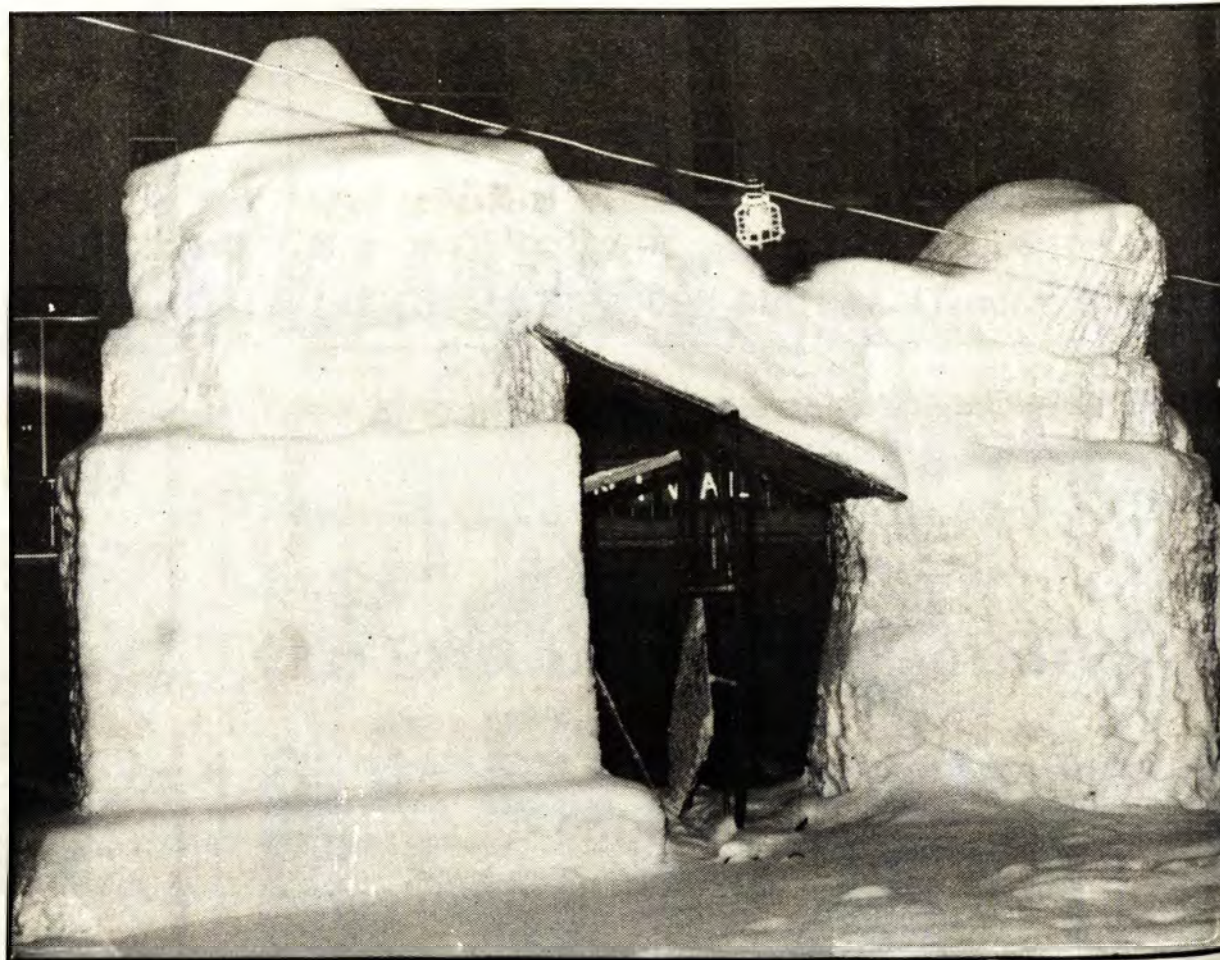




Pictorial Photo/David Baxter



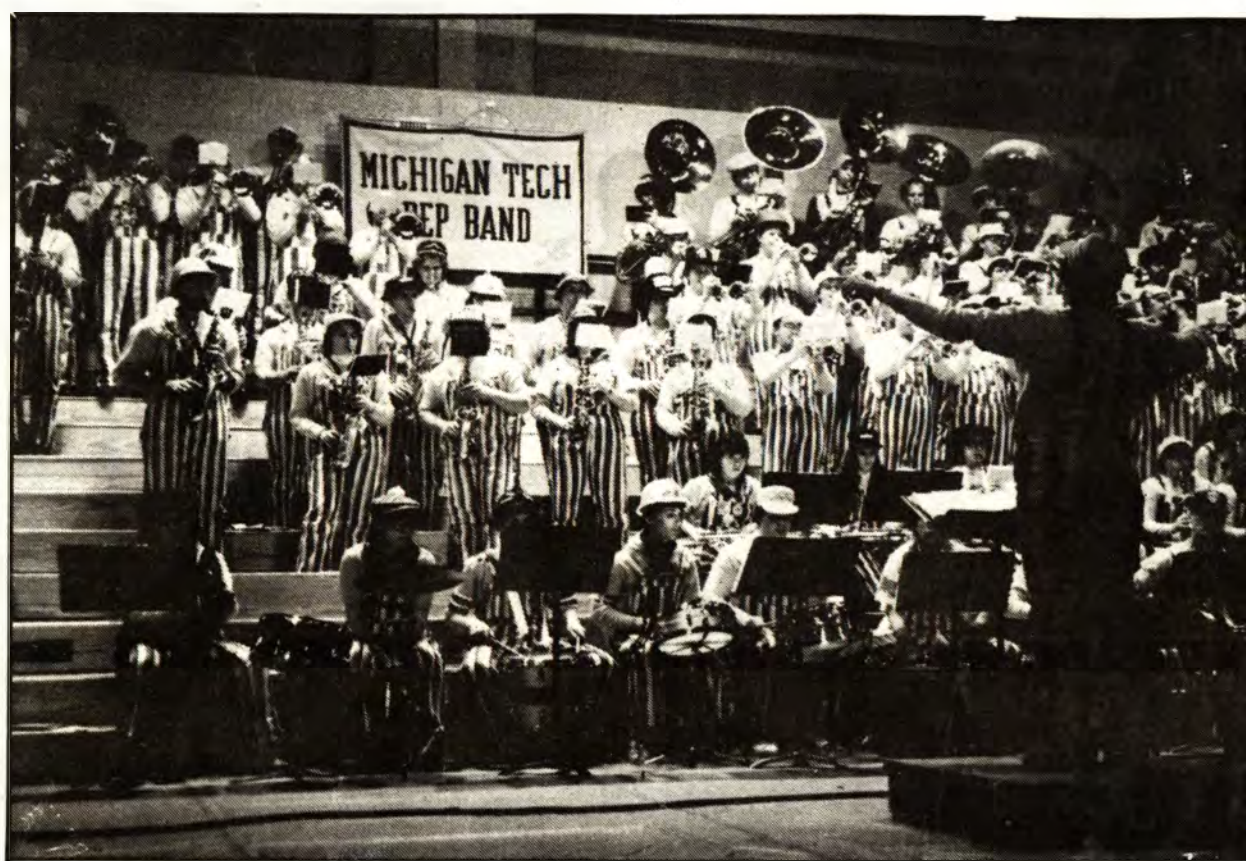
Pictorial Photo/Gordon Boyd



Pictorial Photo/David Baxter



Pictorial Photo/Gordon Boyd



Pictorial Photo/Gordon Boyd

Candid Carnival Fun



Pictorial Photo/David Baxter



Pictorial Photo/David Baxter



Pictorial Photo/David Baxter



Pictorial Photo/Jim Hollenbeck



Pictorial Photo/David Baxter

PULLING
AN
ALL NIGHTER?



Pictorial Photo/David Baxter



Pictorial Photos/David Baxter



Pictorial Photos/David Baxter



Pictorial Photo/Jim Hollenbeck



Hockey Huskies Prefer Western Climate

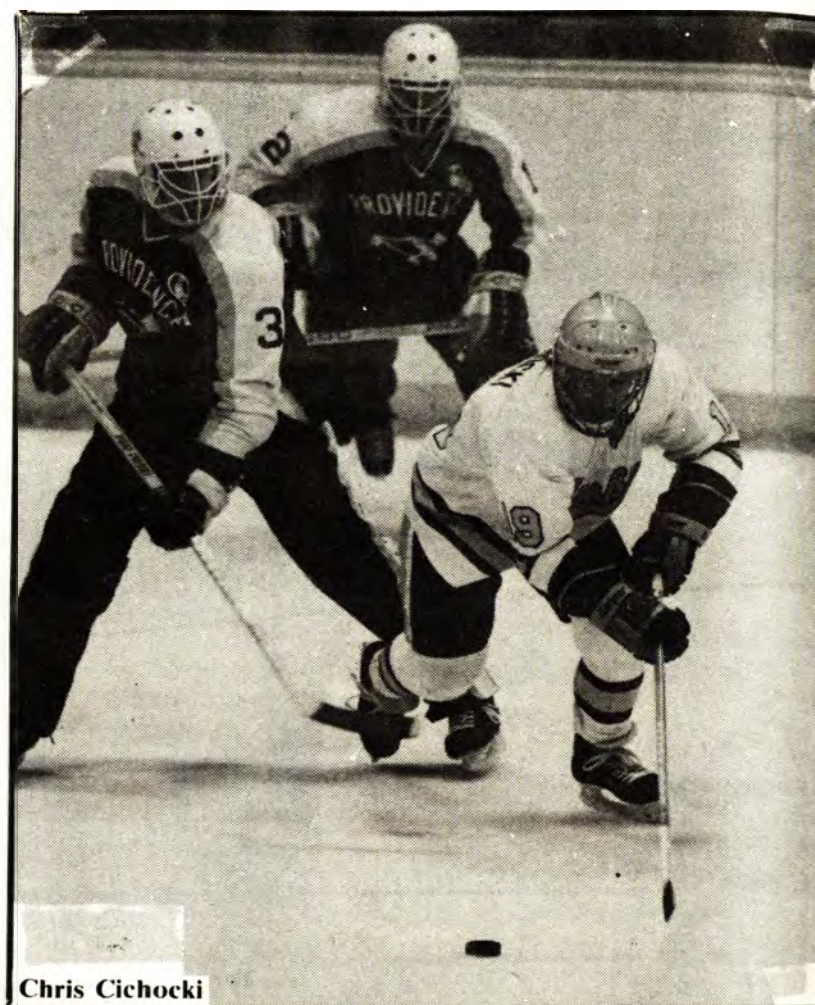
by KIM GOWER
Sports Editor

"Up and down" is a phrase quite often used to describe a team's season, but in the Hockey Huskies case it's been more of an "east and west" type year.

Tech's first year back in the Western Collegiate Hockey Association (WCHA) would have been a great success if their contract hadn't come with a Hockey East Association (HEA) clause. This was the first year that the WCHA and HEA had their inter-league scheduling agreement, and if Tech had known then what they know now, they may have considered staying in the CCHA.

The season started with optimism and spirit as Tech went 8-4 with sweeps of league rivals Minnesota-Duluth and Denver, and a split with Northern Michigan. There was some trouble with the eastern competition, but nothing that a little experience couldn't take care of, or so it seemed at the time.

Unfortunately the HEA just kept coming, and bringing with them their officials and penalty minutes. The situation became so deplorable that Coach Jim Nahrgang pulled his team off the ice in the final east game of the year and took the forfeit. "Hockey East officiating stinks," he commented after one game, and in reference to the forfeit he said, "My actions speak for the themselves."



The eastern hex is now thankfully over, and Tech can get back to playing hockey. Their success against the WCHA teams has been good so far, thanks to steady veteran performances and the talented underclassmen.

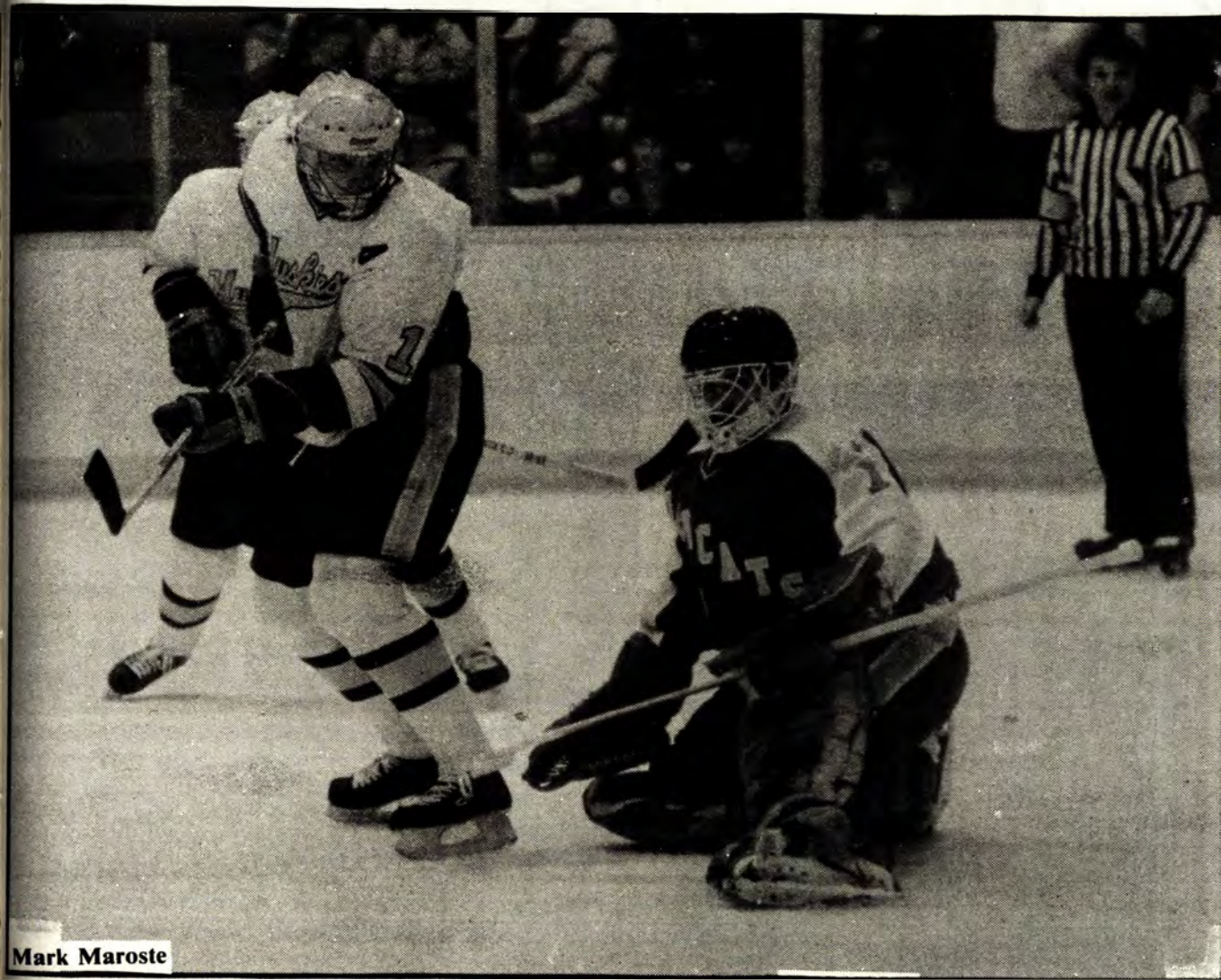
Last year's leading scorer, junior Chris Cichocki, is continuing his fine job at right wing, compiling not only the team leading number of goals, but also the third highest number of assists. Assist leader, Mike Nepi, is rounding out a fine career as a top notch defenseman who's not afraid to run in a few well needed goals himself.

Team Captain, Dave Reiersen is second in team assists and fourth in total points. His leadership on and off the ice has contributed to the strong Husky comeback, while fellow junior Geordie Hamilton has also been instrumental in Tech's wins. Senior center Mark Maroste's fine all around play has been another big factor in the Husky successes.

Several younger players have made their presence known, too. Freshman Center John Archibald and sophomores Brian Hannon (right wing), and Don Porter (left wing), have been big scorers both in goals and assists. Their game intensity, team work, and explosive styles promise to give Tech some big victories in the next few years.

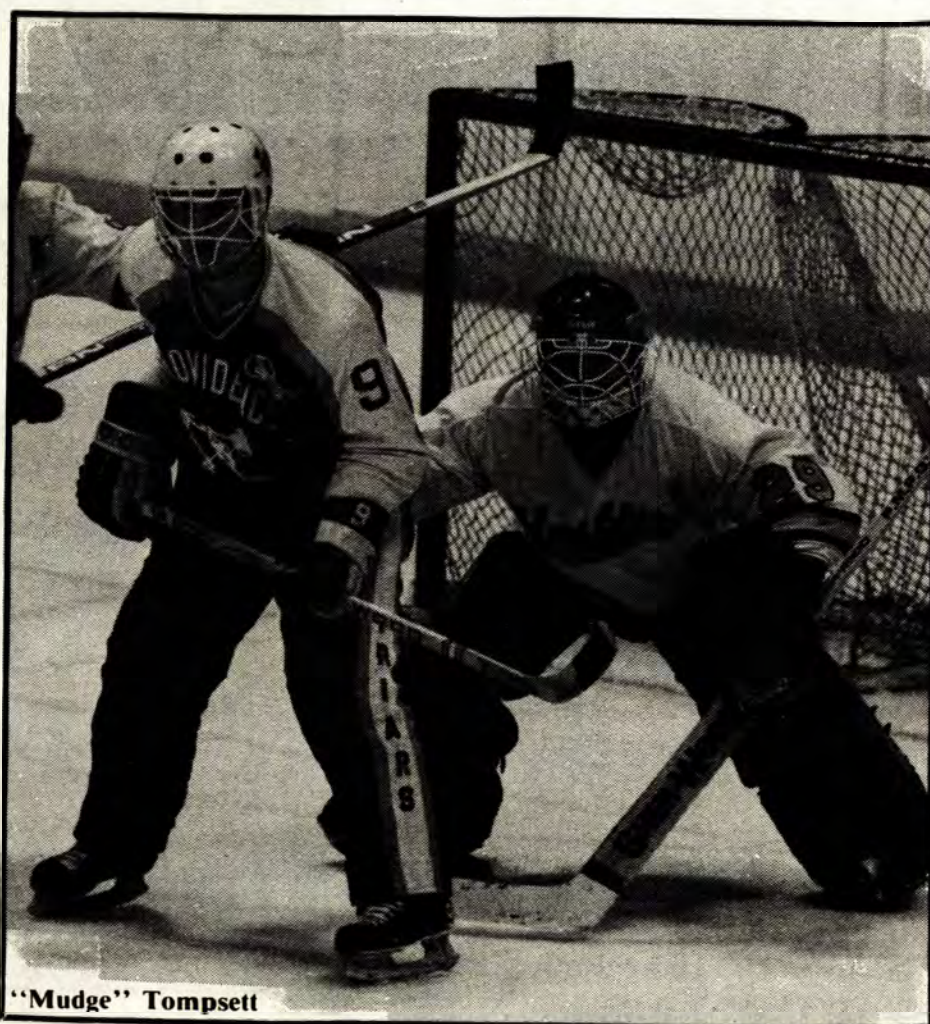
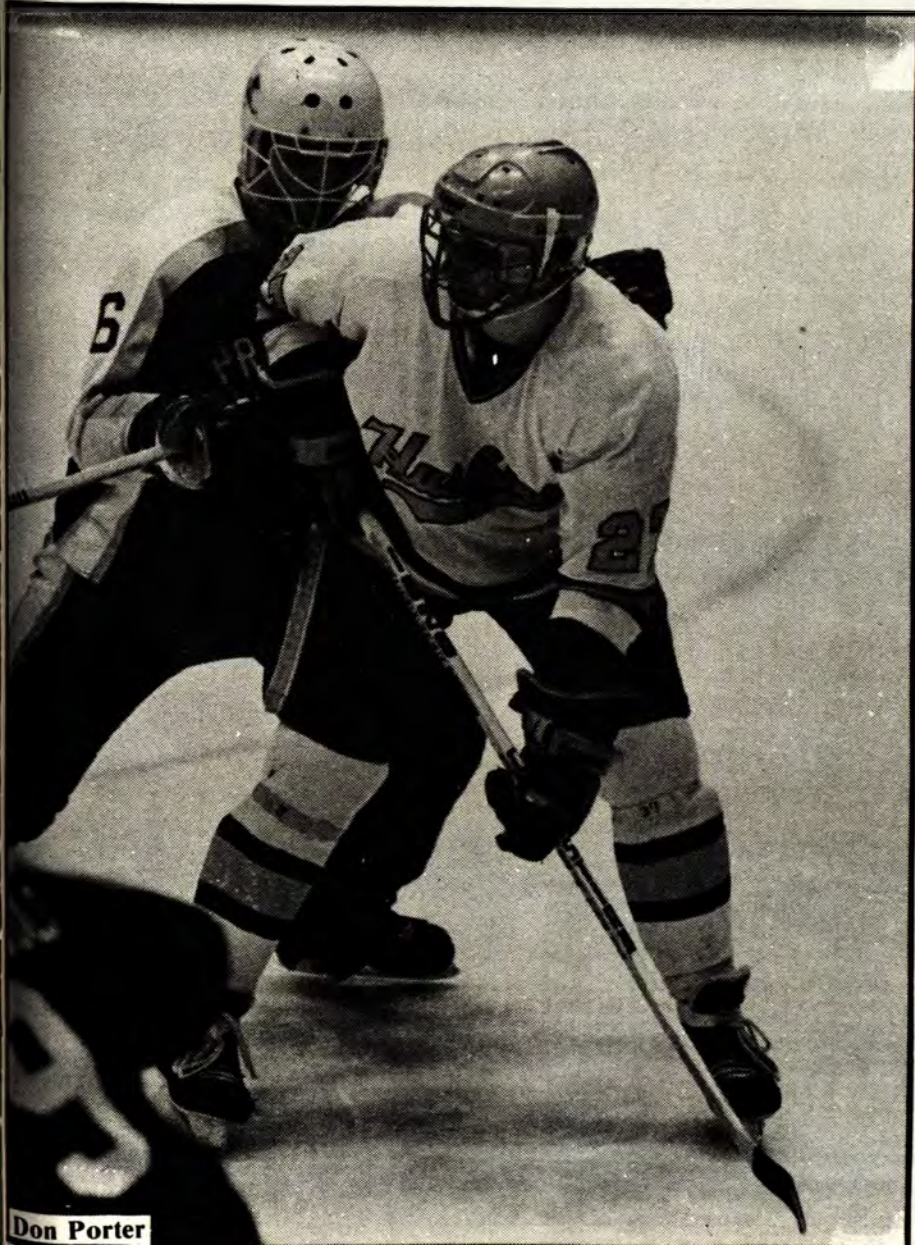


Pictorial Photos/Photo Services



All three goalies have done their part in boosting the team's season record. Sophomore Dave Roach has kept his goals-against average low enough to remain in the top three in league goaltender statistics. Senior Mudge Tompsett has come back from early season problems to post a fine 4-0-1 record, while Junior Darryl Pierce has filled in on the tough east games and still managed a good record.

Coach Nahrgang is in his third season with the Huskies and is still optimistic about this year's playoff chances. He feels the Winter Carnival MTU-Minnesota series will showcase the "best offensive team we've faced all year. They are a fast team and I can't think of a better time to play them than over Carnival in our arena."



Pictorial Photos/Photo Services

Men's Swim Team Cleans Up in Dual Meets



Michigan Tech's Men Swimmers started their season off with an invigorating canal swim and have not looked back since. Swimmers brave (?) enough to test the waters were: Phil Holcomb, Cliff Bliss, Mike Genslak, Mark Hoskins, and Marc Myrum.

by **KIM GOWER**
Sports Editor

"It's just a joy to work with a team like this," praised Coach Judy Fynewever when describing her superb 1985 swim team. "Everybody gets along and works together."

Indeed a record which only sports one loss is something for the coach and team to be proud of, and Fynewever couldn't stop talking about the fine efforts her men have put forth.

She first cited senior captains Matt Williams and Marc Myrum. "Matt is having another fine season of diving and Marc is a fired up inspiration to the whole team."

She also has high hopes for Eric Little who has been rapidly improving. "He should be our number one diver next year," she said.

Along with her upper classmen leaders, Coach Fynewever has a fine group of younger swimmers who have been steadily improving all last year. Sophomore Todd Dulack broke the freshman breast stroke record last year, and is only a tenth of a second off the school record now. Fellow sophomore Ray Plewa only started serious competition a few years ago but is already one of Tech's mainstays. "He has a lot of potential and can just keep on improving," said the coach. "He's already broken the 50 yard freestyle record several times this year."

Freshman standouts Ron Neuser, Cliff Bliss, Mike Genslak, and Chris Klasner have broken the freshman 400 medley relay and 800 free relay records.

Neuser is a "good backstroker who's overcome some early season illnesses and is coming on strong," while Bliss is showing promise in becoming an "excellent distance swimmer."

Coach Fynewever's preseason optimism has paid off in a top notch swimming season and she has high hopes for continued success. "This year I'm excited because we have the quality swimmers needed to beat some of these big teams." From the looks of their 6-1 record, they have already made good on her predictions.



Pictorial Photos/Photo Services

Lack of Veterans Hurt Men's and Women's Basketball Teams

by KIM GOWER
Sports Editor

Michigan Tech's men's and women's basketball teams were both predicted to finish last in the Great Lakes Intercollegiate Athletic Conference (GLIAC), and early season performances seemed as though they were going to prove the critics correct.

The men's team went 0-10 before picking up two back to back conference wins. Four of the ten losses went into overtime, but each saw the Huskies fall short.

Some bright spots have shown up on the squad, however, in the guise of hard-working and well-rounded players.

Senior guard Wayne Helmila captains the team and has proven himself to be a powerful floor leader. His 12.5 league scoring average and perfect 1.000 free throw shooting percentage keeps the Huskies in all their games to the end and provides a consistency in their play.

Helmila is the only fourth year man on the team so many younger players are gaining experience and making a large contribution to the overall team effort.

Sophomore Fillmore Walker works tandem with Helmila at guard and has been rapidly proving himself a valuable team asset. In one

recent game he scored 27 points, had 3 rebounds, and dished out 6 assists.

His fellow teammates Joe Sell and Steve Hansen are big rebound contributors who stand 6'7" and 6'6" respectively. Both can also be counted on for a few points when needed.

Coach Bill Gappy looks for continued improvement as the season progresses and has high hopes for next year when his corps of underclassmen return.

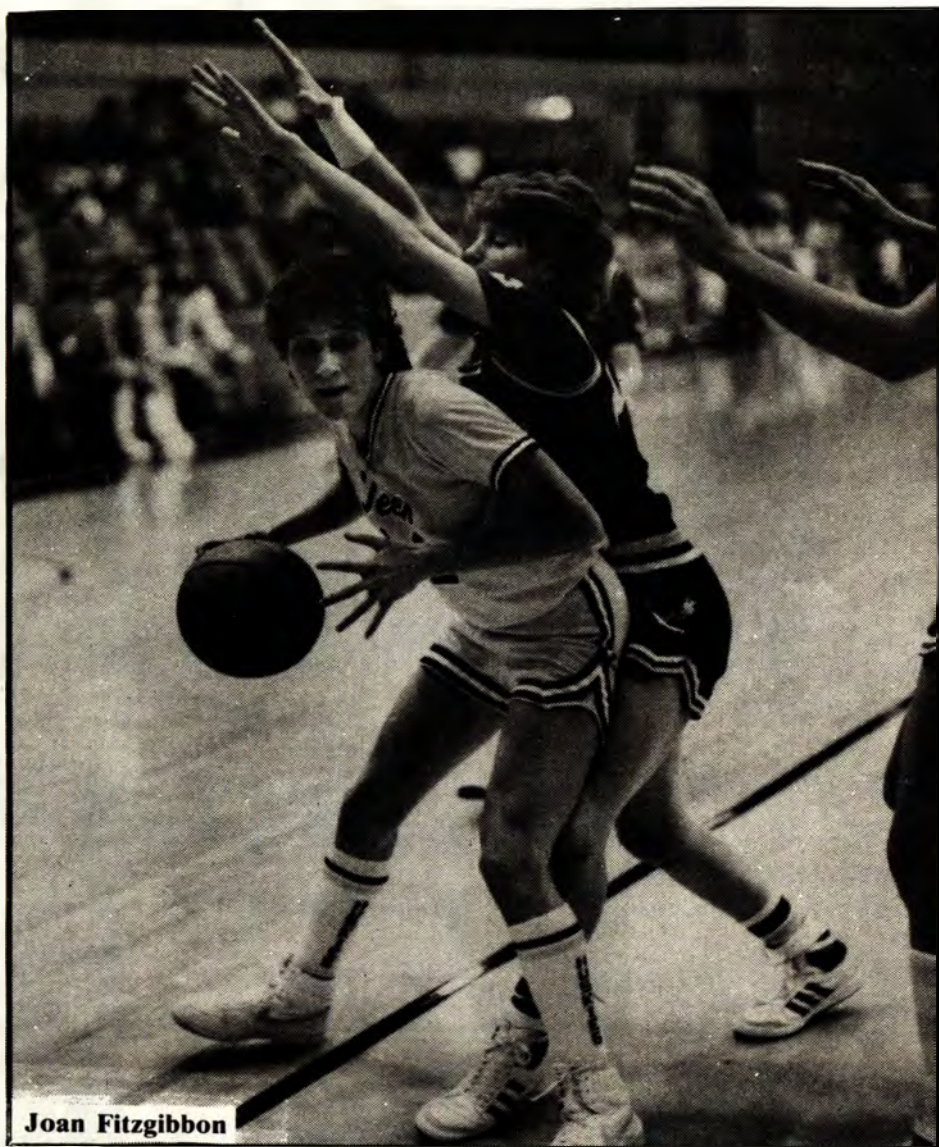
Cindy Corlett's women's team is even less experienced than the men as they can boast of no upperclassmen, but the tenacious playing of some good athletes have enabled them to scrape together some tough wins.

Sophomore guard Joan Fitzgibbon offers the Huskies a steady



Mike Gallagher

Pictorial Photos/Photo Services



Joan Fitzgibbon

stream of scoring power by averaging 14.5 points a game. She is closely followed by forward Mary Fisher who averages 13.2 points and has tough rebounding prowess.

The most rebounding consistency has been exhibited by Laura Williams who not only leads the Huskies but also the league with a rebounding average of 10.0

Other consistent leaders are Junior Cathy Clark who can pass off and score for any Tech effort, and fellow guard Janette Lutz who also can pour in points when needed.



Pat Olson

Secretary

The Pictorial Staff is in a Class by Itself

Pictorial Photos/David Baxter



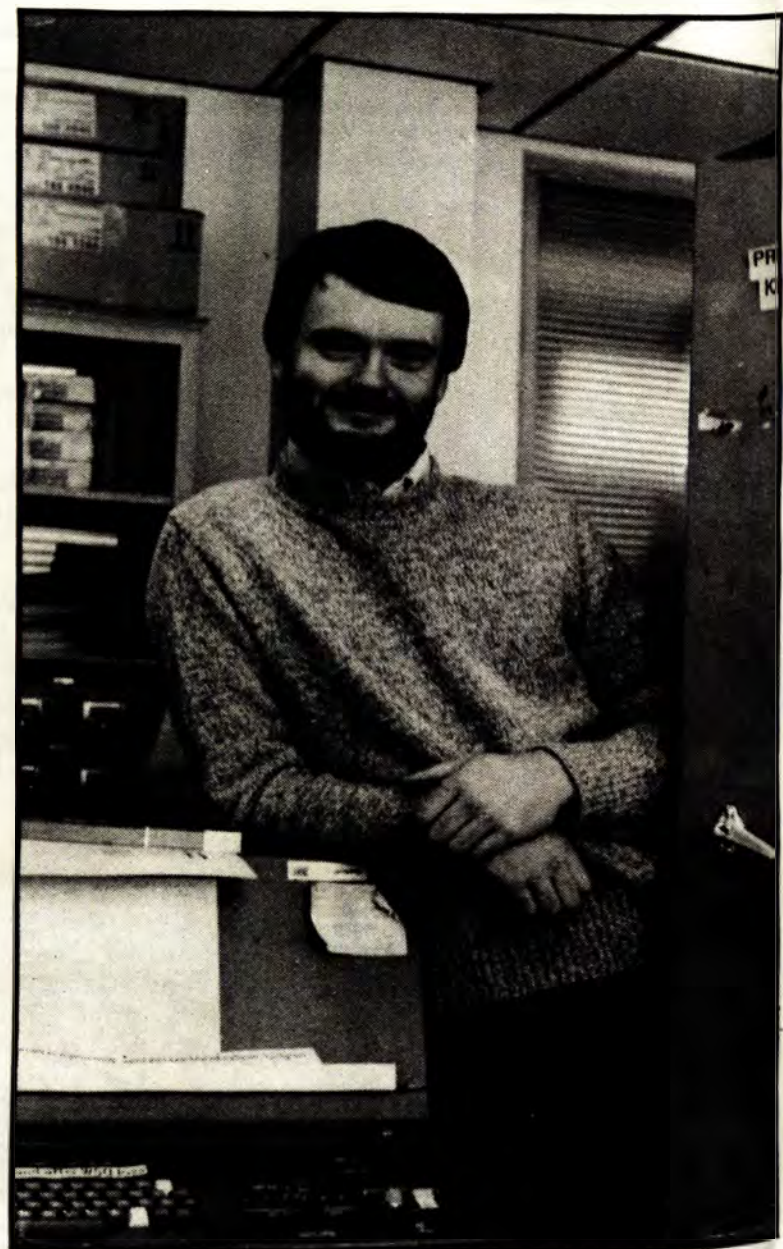
Annette Heine

Editor-in-Chief



Diane Collart

Business Manager



Roger Markham

Associate Editor

STAFF PARTY



David Baxter

Photo Editor



Kim Gower

Sports Editor



Lynn Portugall

Layout Staff



Marilynn Dunker

Senior Typesetter

EDITORIAL

Although this Pictorial turned out to be more work than I had anticipated, it has also been a valuable experience. There's always things to do and people to meet, and it would take years to learn it all. Luckily, I had a lot of encouragement from some very special people, whom I'd like to thank: Diane Collart, who did an exceptional job as business manager and more; David Baxter, who is not only an excellent photographer but also a pleasure to work with; Pat Olson, who saved this project from going under many times; the rest of my competent staff; and my very understanding instructors who worked with me, not against me. Thank you.

Annette Heine



Laurie Isaacs

Copy Editor



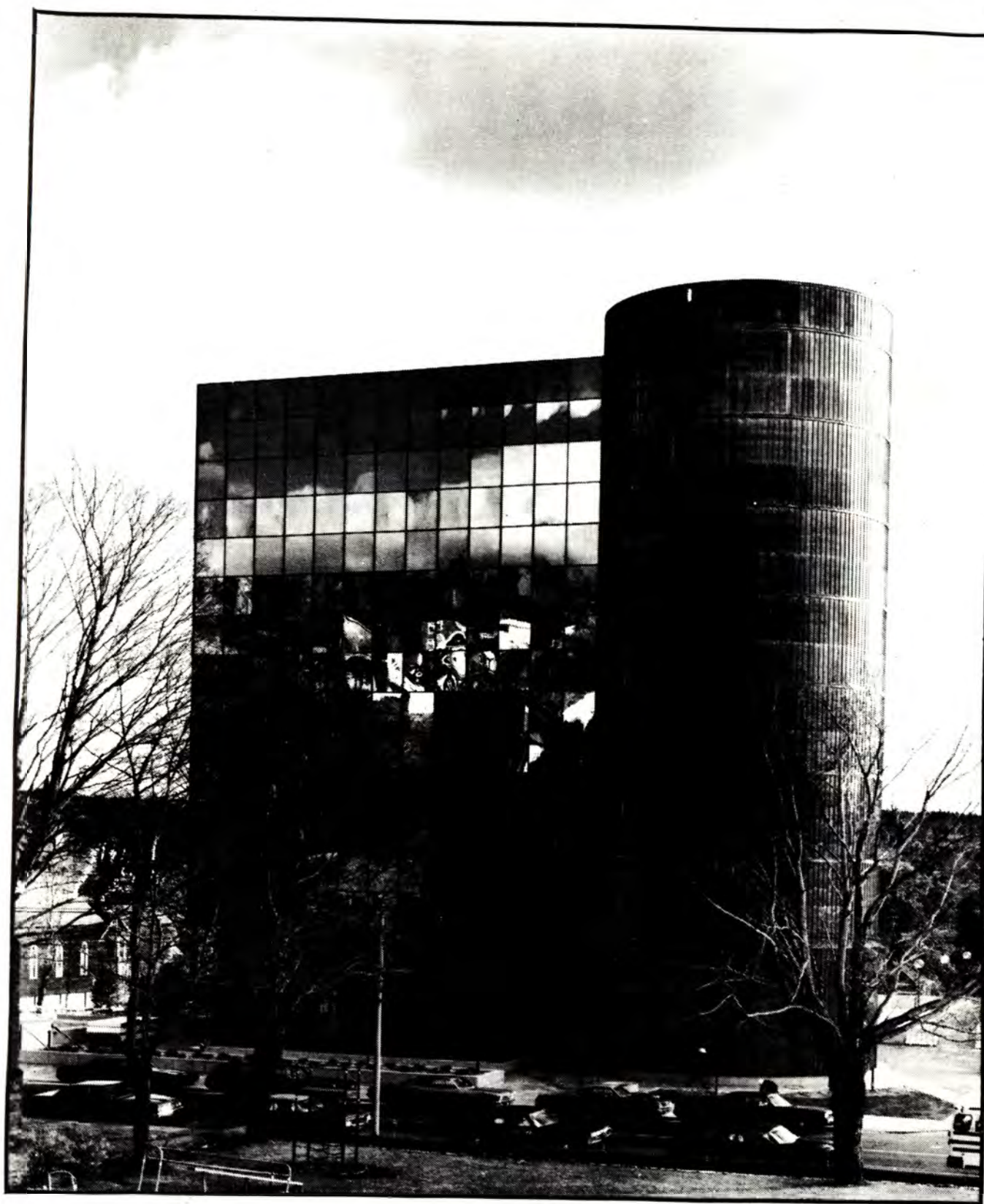
Memorial Union
Your one stop student center



**E.R. Lauren
Bookstore**

**A bookstore
plus a whole lot more**

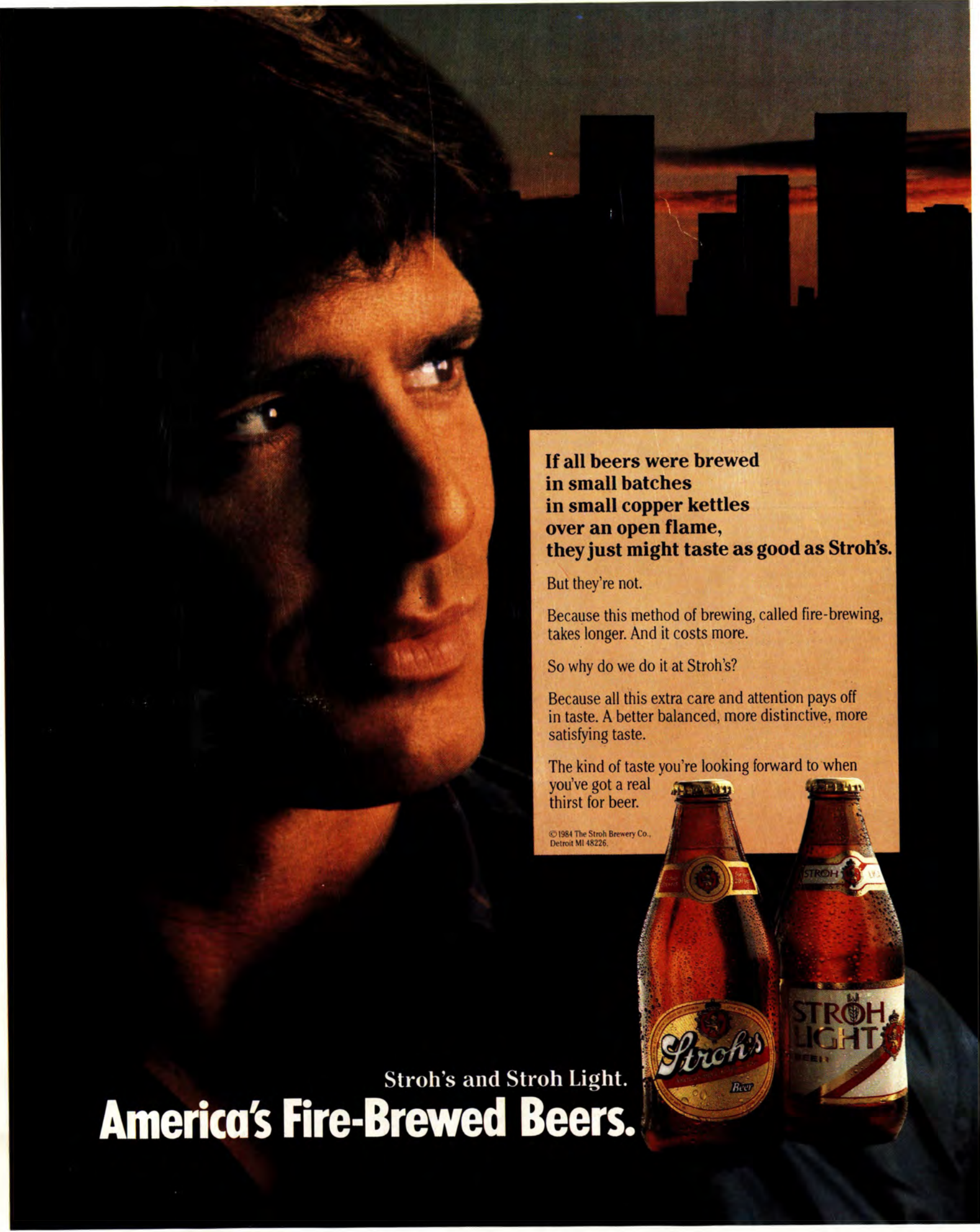




SAVINGS

Home Office-Hancock, Michigan

Now Over A Billion Dollars Strong



**If all beers were brewed
in small batches
in small copper kettles
over an open flame,
they just might taste as good as Stroh's.**

But they're not.

Because this method of brewing, called fire-brewing,
takes longer. And it costs more.

So why do we do it at Stroh's?

Because all this extra care and attention pays off
in taste. A better balanced, more distinctive, more
satisfying taste.

The kind of taste you're looking forward to when
you've got a real
thirst for beer.

© 1984 The Stroh Brewery Co.,
Detroit MI 48226.



Stroh's and Stroh Light.
America's Fire-Brewed Beers.