

LD
3347
L63
v.1
ARCH



LIBRARY
MICHIGAN TECHNOLOGICAL UNIVERSITY
HOUGHTON, MICHIGAN



Michigan Tech Lode
Winter 1981

Thirteenth Annual

February, 1981



1975 — Yo' "STILL" Froze Mammy ?? TKE



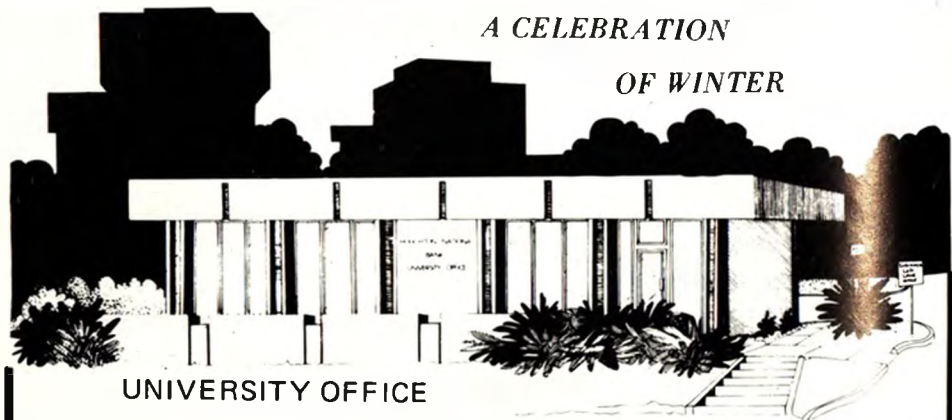
1974 — "Ahh - yes! All Cool Heads, Bar None!" TKE



1973 — "Let's Go For A Walk While The Porridge Thaws" DHH

1976 MICHIGAN TECH WINTER CARNIVAL

*A CELEBRATION
OF WINTER*



UNIVERSITY OFFICE

**N-B HOUGHTON
NATIONAL BANK**

**Now Serving the Copper Country
in Three Locations . . .**

DOWNTOWN

482-5500
600 Sheldon

UNIVERSITY

482-5500
1303 College

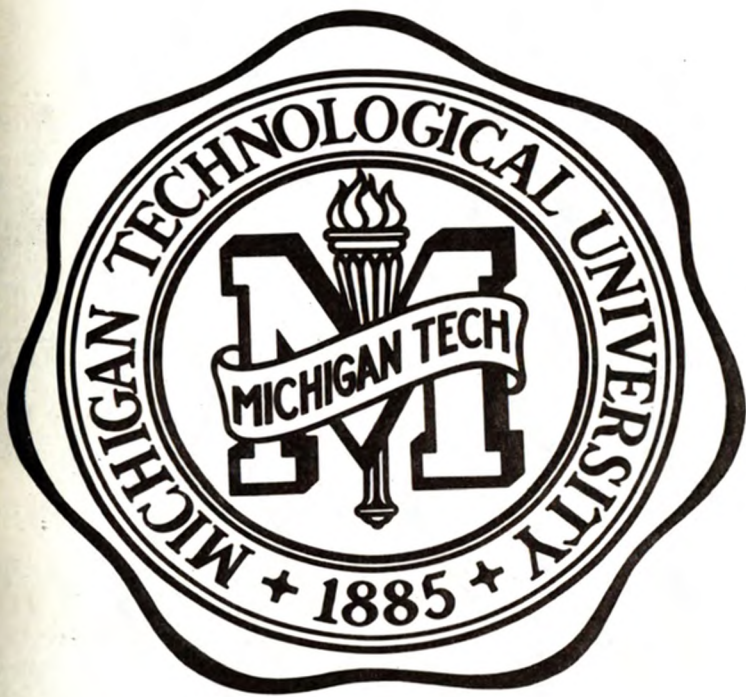
CHASSELL

523-4208
511 Wilson Memorial

1976

Michigan Tech

Winter Carnival Pictorial



STAFF

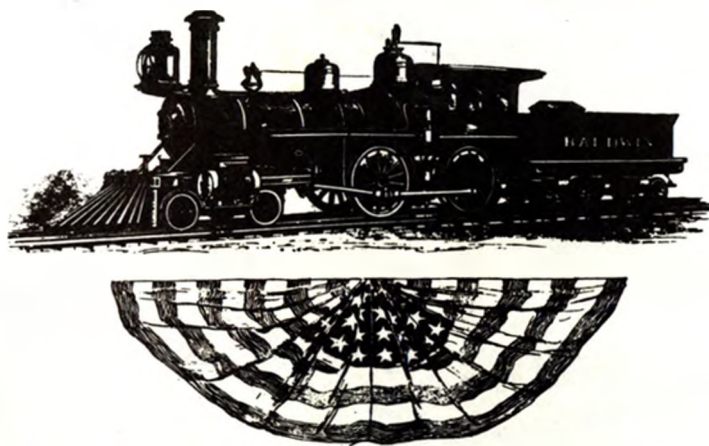
Editor in Chief
Layout Editor
Business manager
Photographers

Production

Color Photos
Queen Candidate Photos

Robert Kitchen
Kim Stubblefield
Rob Horning
Ken Cooper
Don Bruggema
Jim Gary
Kieth Frank
Dave Brooks
Sue Grougeon
Mary Lou Miller
Mary Siewert
Nancy Kitchen
Joe Kirkish
Charlie Eshbach

Special thanks to Dave Thompson and Gwen Fowler
at the Library Archives



1776 Happy Birthday U.S.A! 1976

Icy Blasts From



World Famous Michigan College of Mines' Male Chorus Line



1976 Blue Key Honor Fraternity

In 1923 Stan MacArthur organized the first Winter Carnival to show off to his girl friend. Stan's girl friend was a local Copper Country girl, but her folks sent her to Mt. Ida Finishing School for Girls. One day she was telling Stan about how talented the Dartmouth boys were in ice and snow sculpture. Dartmouth had been having a Winter Carnival for the past years.

Stan went to Jim Fisher and asked for some money, which he got, to put on a Winter Show at the old Amphidrome. They made \$250.00 after paying back Mr. Fisher, and put the money into an athletic fund.

The Blue Key Society organized a new Carnival in 1934. The Carnival consisted of a winter parade, hockey games, snowshoeing and a dance. Residents of the area also participated in the festivities. The first Queen and attendants chosen was in 1936 and snow statues began to appear. 1937 saw the beginning of the variety show and topping off the activities was a combination "Snow Ball", celebrating the college President's birthday and Carnival Dance.

The Queen candidates of 1939 had their pictures judged by Paramount Studios of Hollywood, with Bing Crosby and Shirley Ross as judges. The 1940's activities went without some of the luxuries as the war years loomed overhead. However, the winter spirit did continue. The erection of the ski tow on Hancock's Quincy Hill, now Mt. Ripley, made skiing the highlight of 1946. The variety show was revived, after a three year lapse caused by the war, with Veterans playing a major part. The only eight day long Carnival was held in 1952 which included a beard contest along with the other special events. The Ski Club also provided the spectacle of the Flare Pageant, on Mt. Ripley, using flares to create a sparkling effect in the dark. Freezing temperatures in 1952, caused the Ice Revue to be cancelled. Since then, festivities have remained about the same and high spirit has prevailed.

Our Frozen Past



Winter in Red Jacket, 1905



Both pictures Michigan Technological University Library Archives.

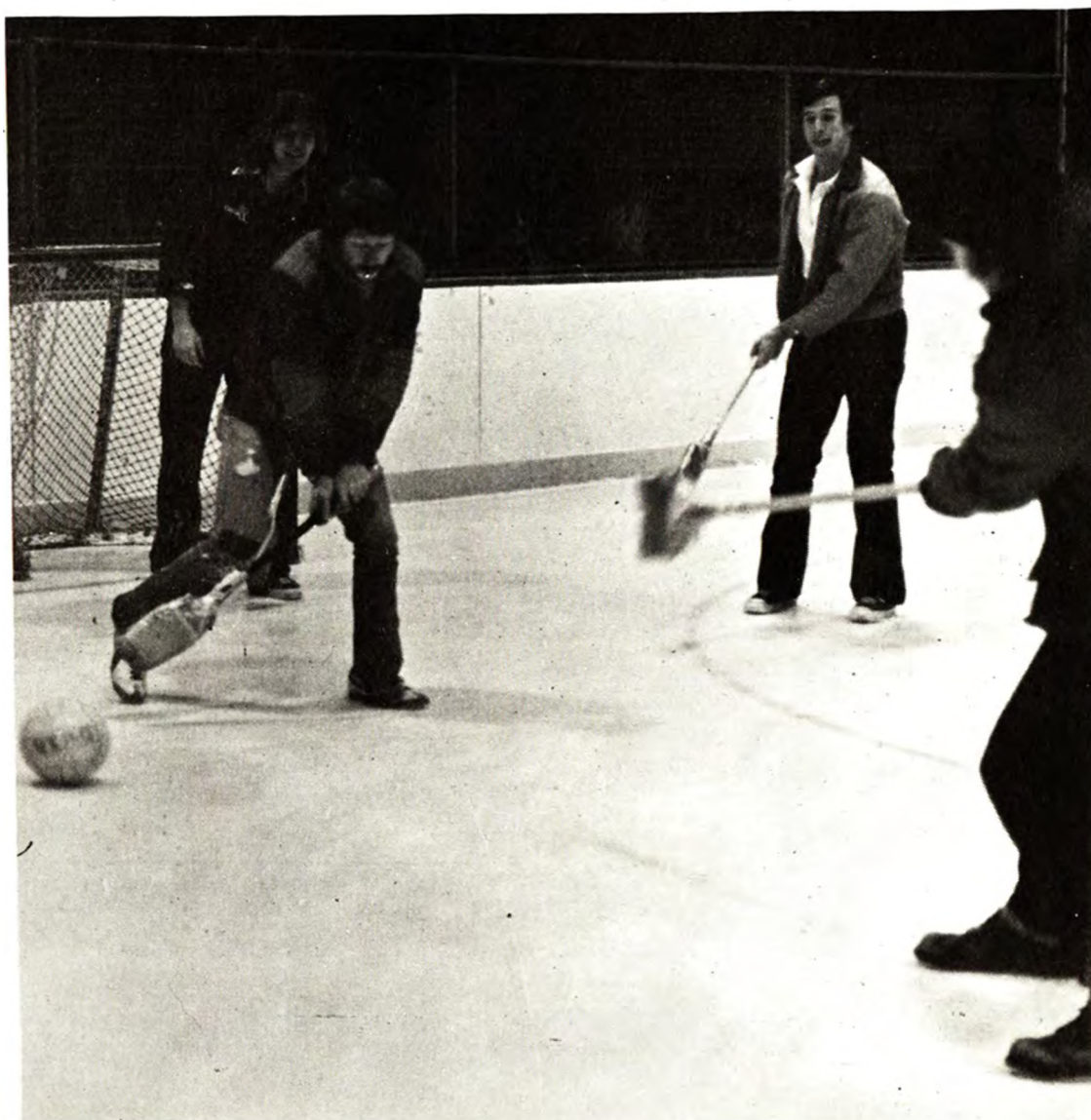
SPECIAL



EVENTS

For the first "Ice Circus," Stan MacArthur had just seen the silent movie "Ben Hur;" so he decided to stage a chariot race on the ice in Amphidrome. He asked his friend to make the costumes. She designed and made costumes for six horses and enough boys to make a good race. For chariots they cut half of one side of a barrel out. Skaters were horses and the barrels were rigged with skates. It was an exciting race with lots of action!

Now, a dogsled race takes the place of the chariot race, and there has been added over the years, broom ball, snowshoeing, skiing, and many other smaller events. Radio coverage of these special events is provided by the campus radio station, WGGL-FM, which makes it possible for everyone to follow the action. We've come a long way since 1923, but the spirit that began this Winter Carnival has continued through the years.



1976 Winter Carnival



Denise Beebe



Julie Kent



Jane Hordin



Mary Lantz



April Cripps

Queen Candidates



Laura Helbling



Karen Weber



Ann Kelleg



Theresa Remondini

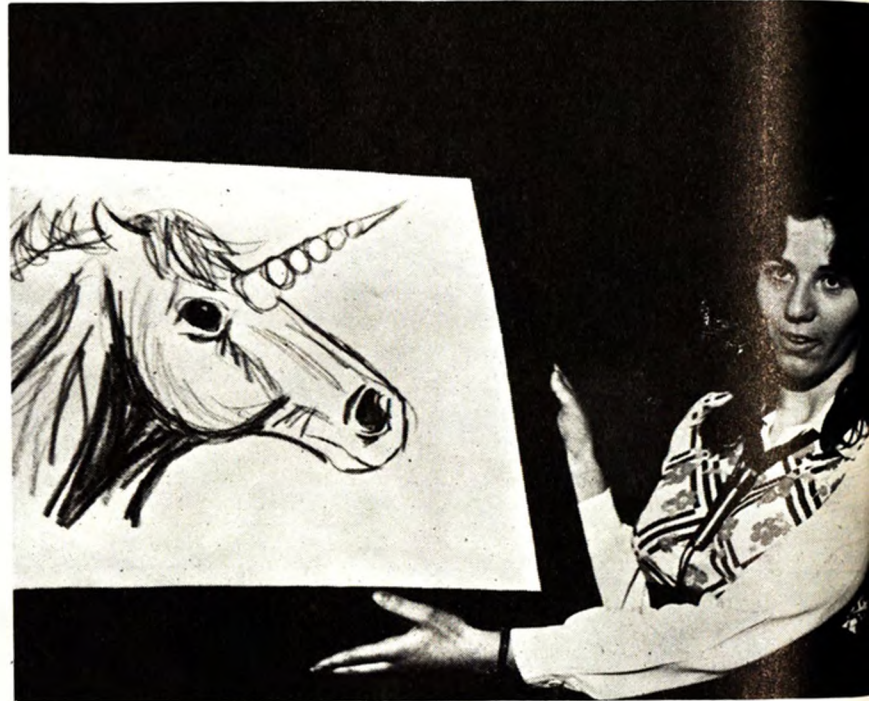


Mary Morin

Their Night To Shine !



Ann Kelley



Julie Kent



Karen Weber



Theresa Remondini



Mary N. Morin



Mary Lantz



Jane Nordin



Laura Helbling



April Cripps



Denise Beebe

Our 1976 Winter Carnival Queen

April Cripps



Our 1976 Queen hails from Lone Pine, California. She is a sophomore majoring in technical writing, and is sponsored by the Sigma Rho fraternity. Among her interests are ice skating, writing, playing the guitar and singing, horseback riding, and traveling.



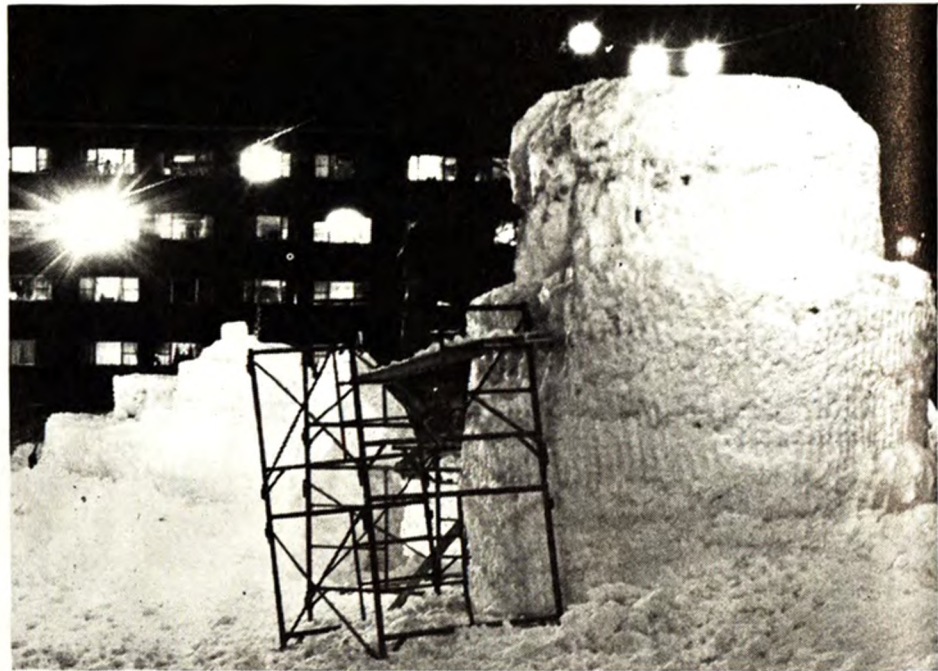
President Smith escorts April Cripps through the ROTC Honor Guard.

Warm Visitor To The Icy North

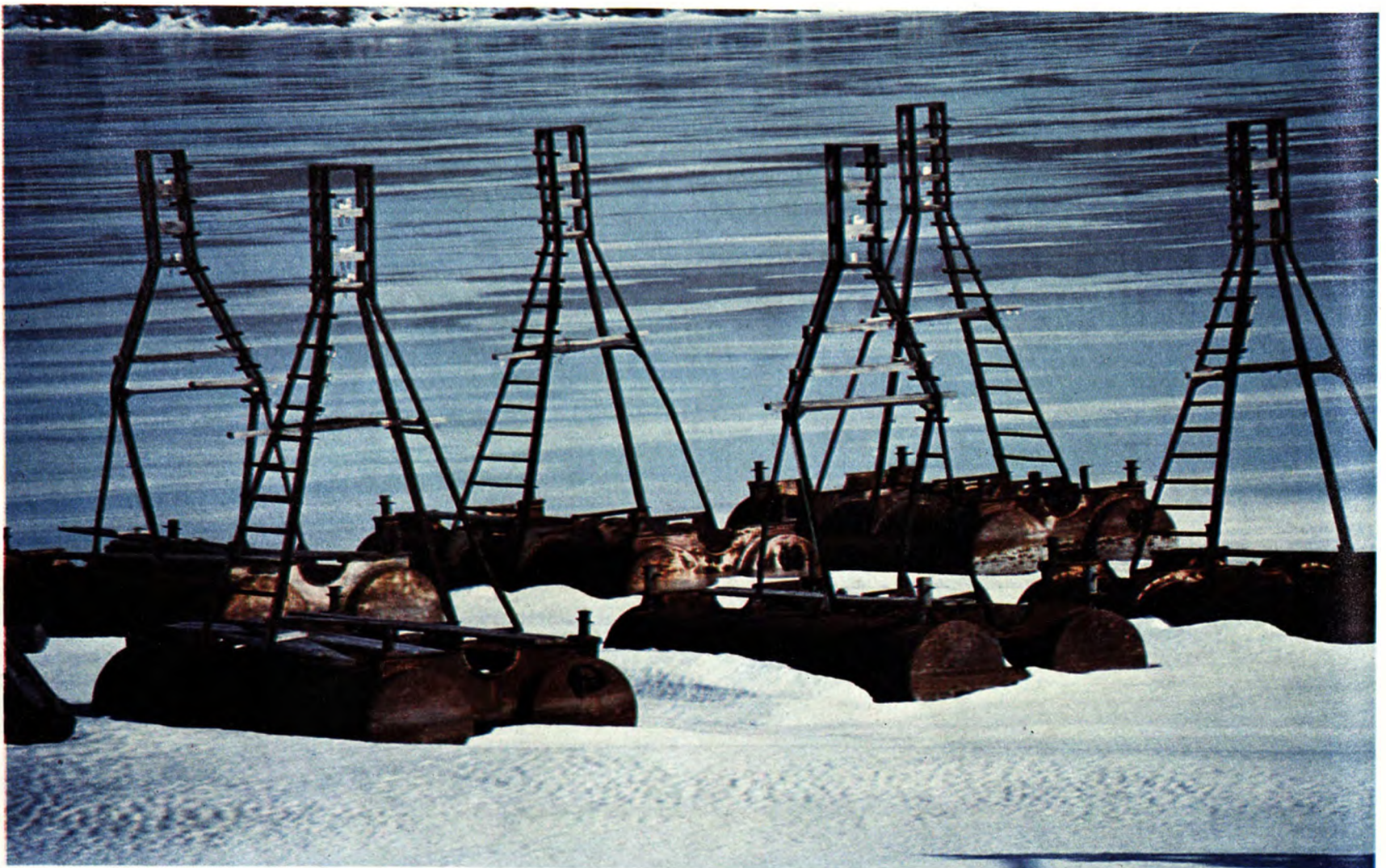
Welcome, Stacy Holland, winner of the All-Campus Beauty Pageant at Southwest Texas State University, San Marcos, Texas. This will be the third year that the southern school has rewarded its beauty queen with a trip to Michigan Tech. This is an outgrowth of MTU's traditional shipment of snowballs to STSU. Stacy, 19, is from Deer Park, Texas. She is a sophomore majoring in psychology and minoring in music. Her campus activities include the SWT Singers, Gamma Phi Beta, and serving as junior panhellenic treasurer. She lists her interests as singing, piano, dancing, getting to know new people, and caring for plants. After graduation, she hopes to travel extensively as a stewardess or professional singer. Stacy has brown hair and brown eyes and is 5' 4". Both the Texas pageant and the 1976 MTU Winter Carnival have a Bicentennial theme.



John Helge congratulating the winner.



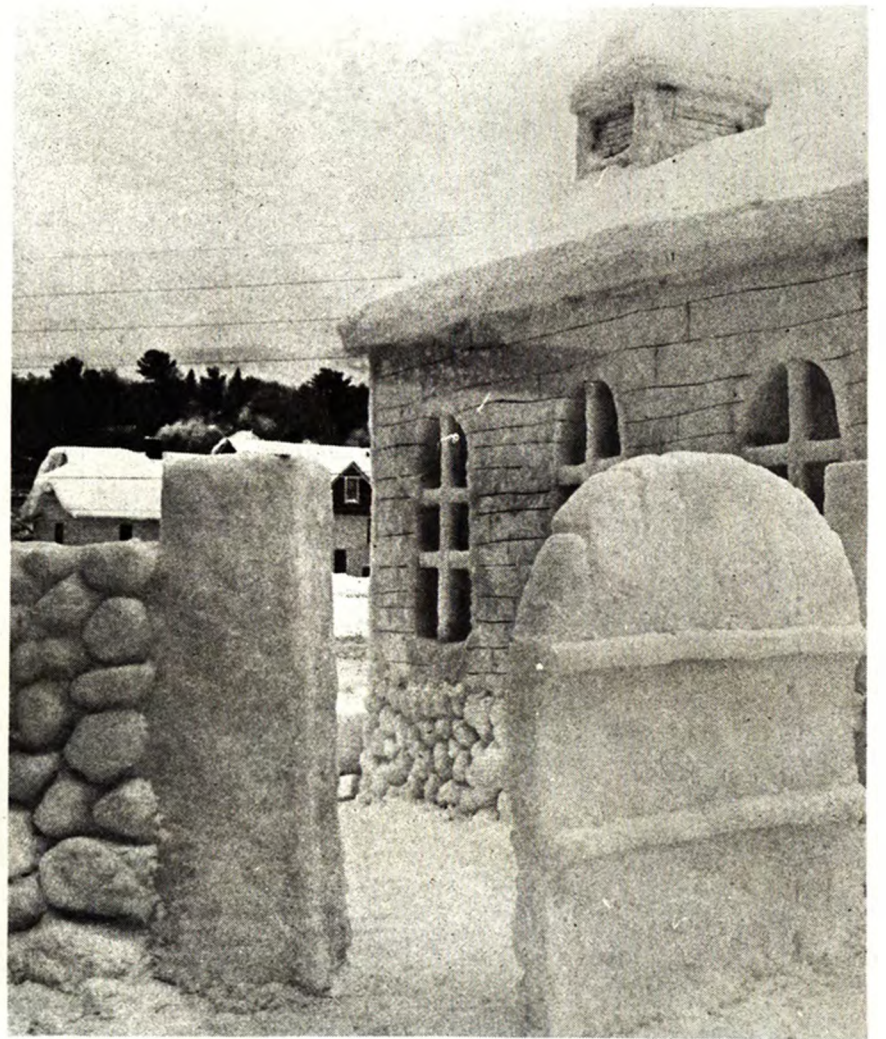


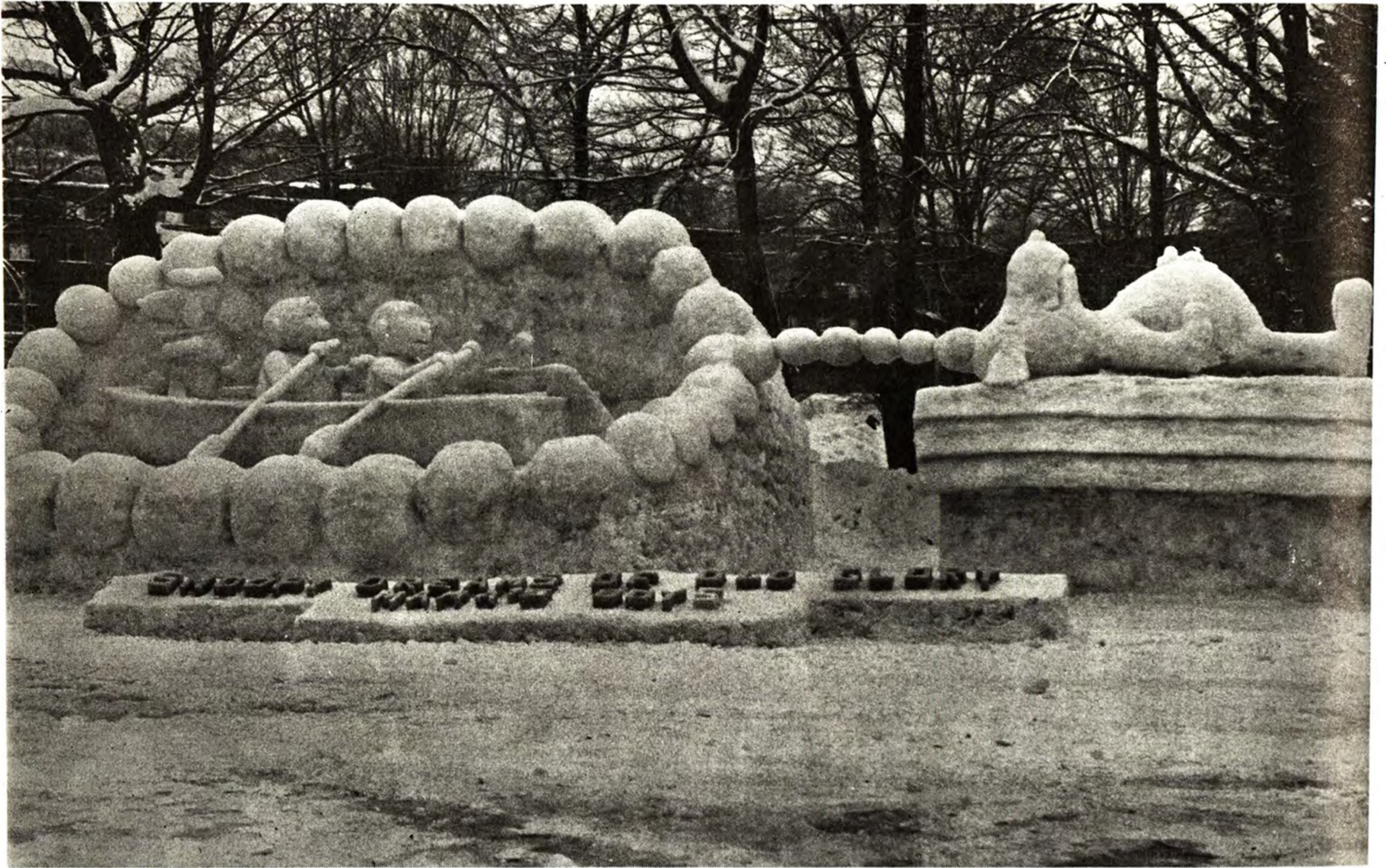




1st Place Class IV

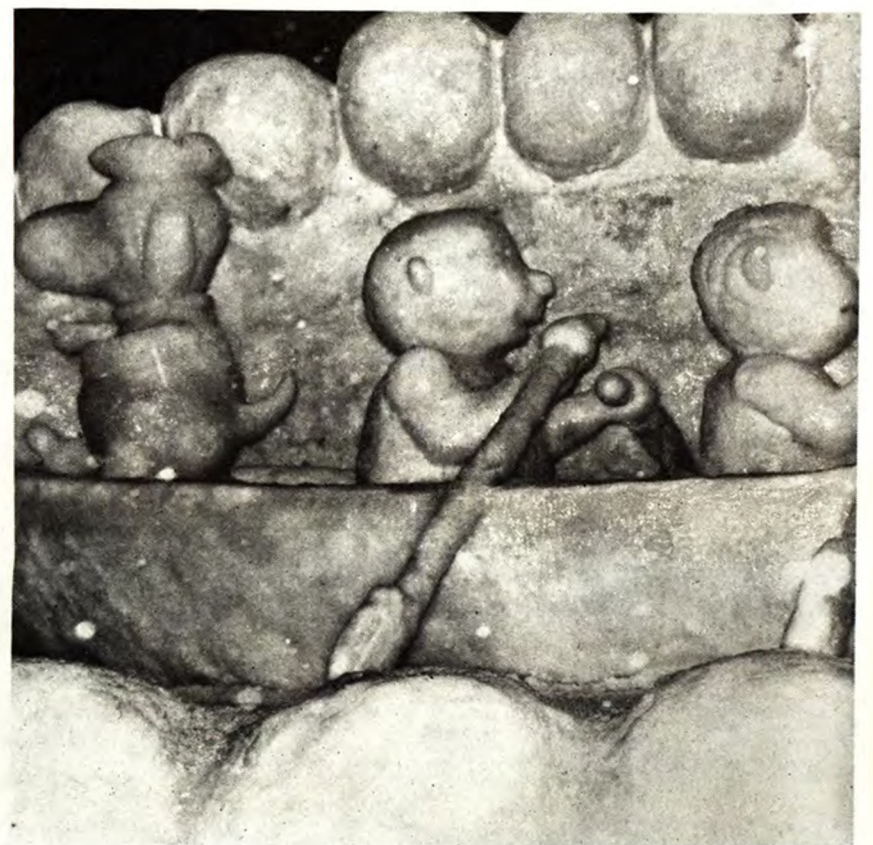
Tau Kappa Epsilon

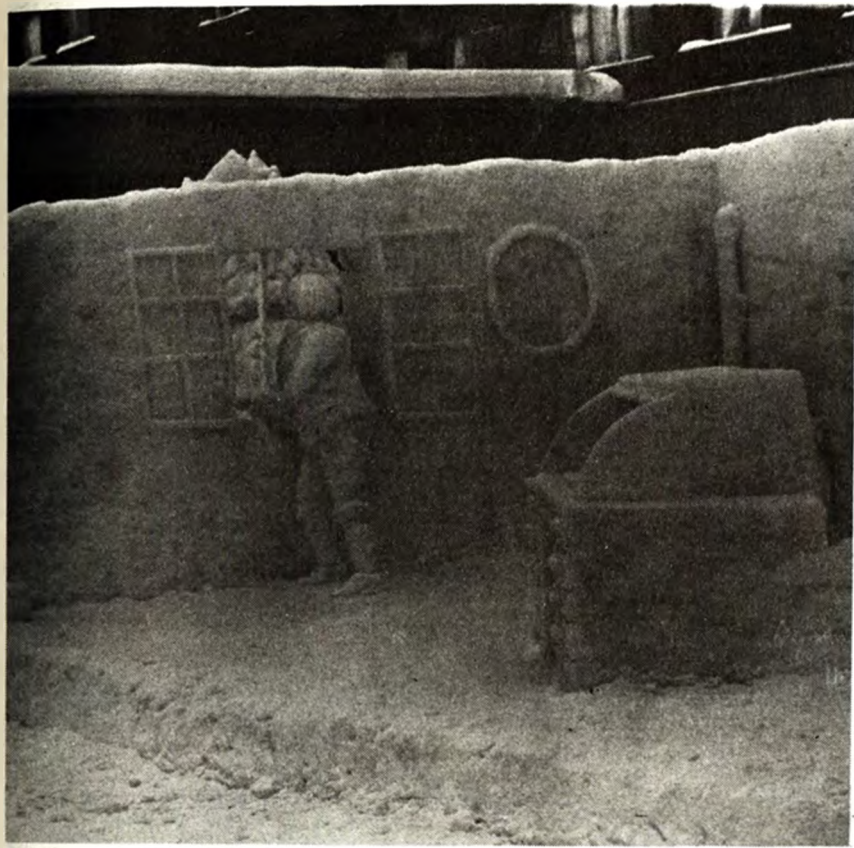




1st Place Class III

Mama's Boys





1st Place Class II

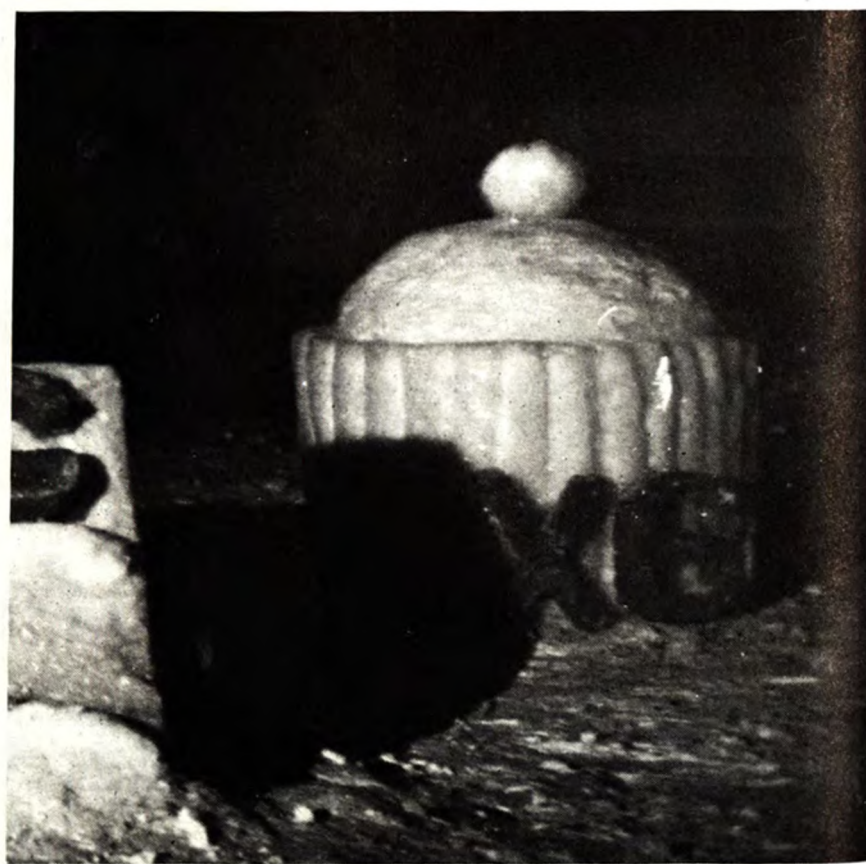
Kybo House

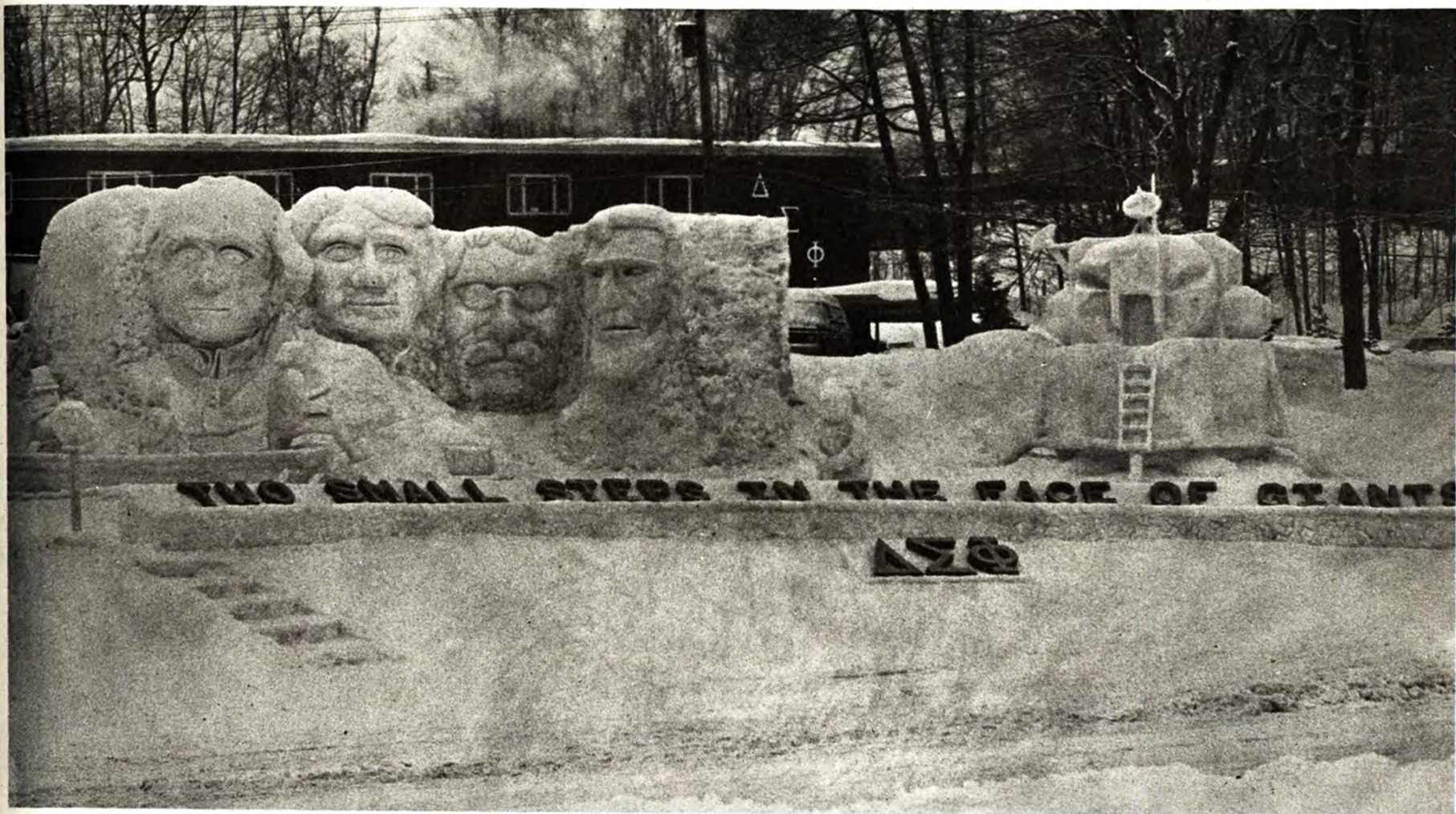




1st Place Class I

Theta Chi Epsilon





Delta Sigma Phi

2nd & 3rd Place Class IV

Theta Tau



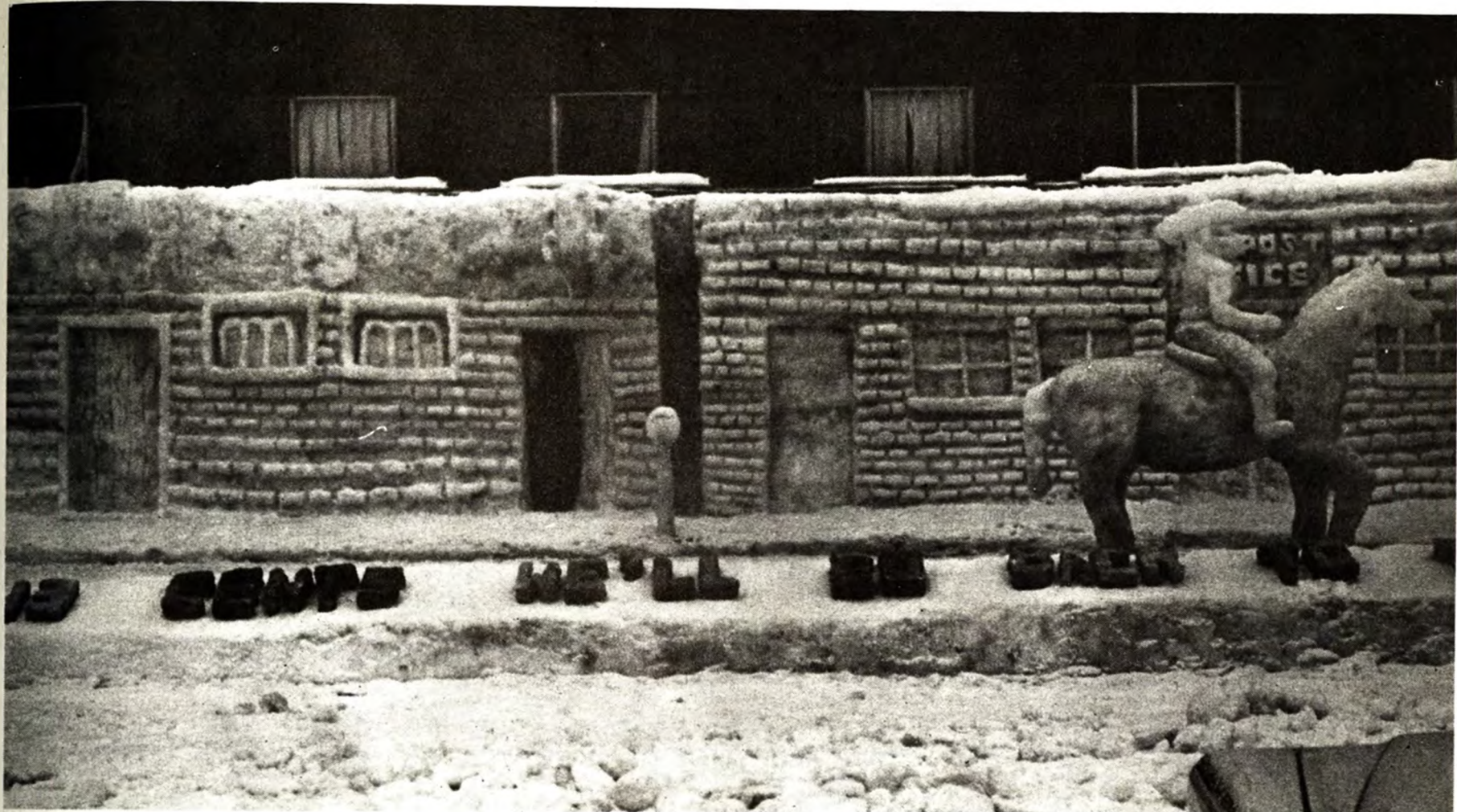


ROTC

2nd & 3rd Place Class III

Alberta



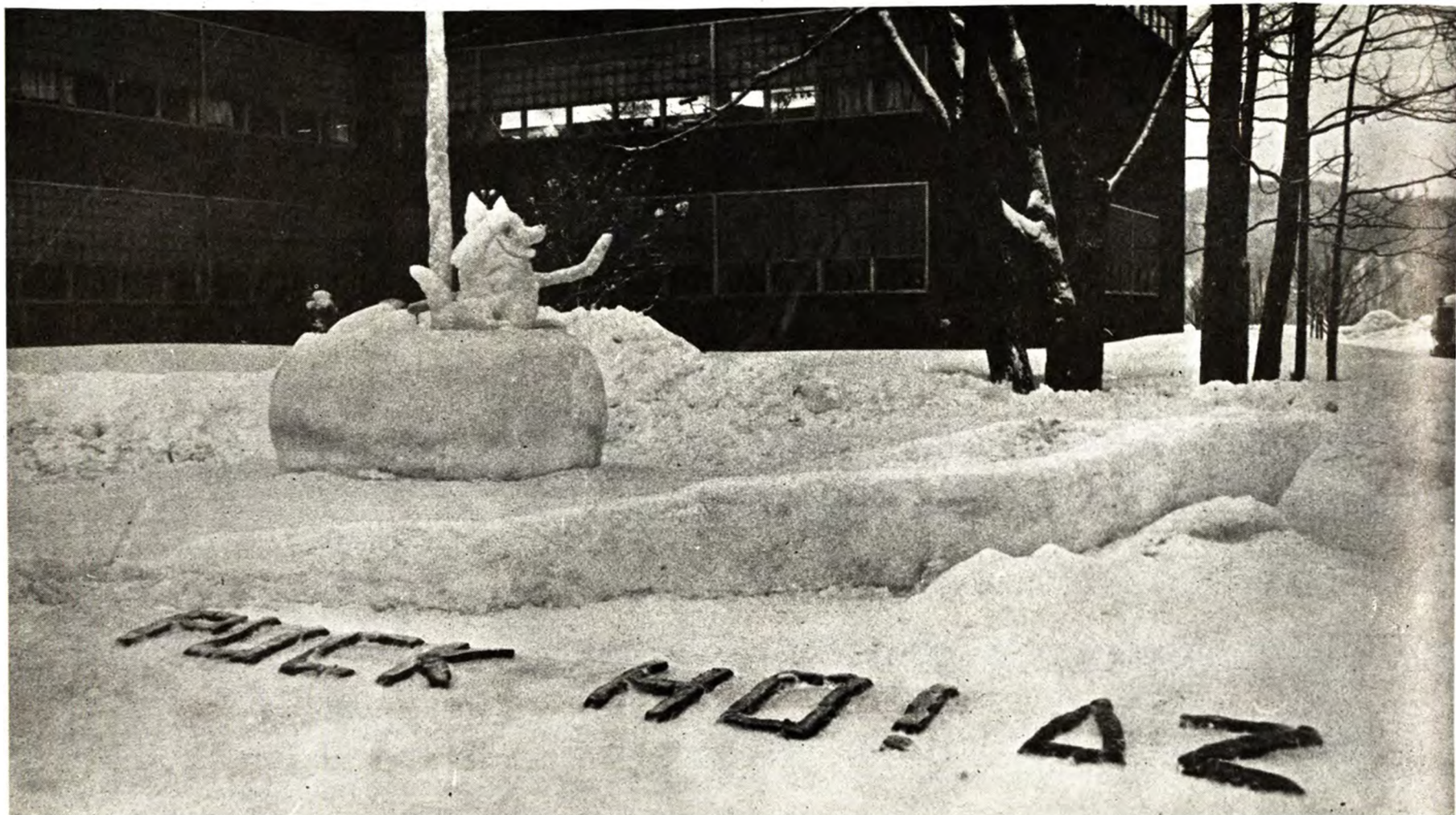


Stagger Inn

2nd & 3rd Place Class II

Wesley House





Delta Zeta

2nd & 3rd Place Class I

Crosstone



The
**DOWNTOWNER
MOTEL & LOUNGE**



Overlooking Portage Lake
and the Lift Bridge!

110 Sheldon Avenue
Houghton

During Carnival Week

Enjoy full menu of good food

ELECTRIC HEAT — SAUNA
ROOM PHONES — COLOR TV
NATIONAL CAR RENTAL

Bill and Shirley Romps,
Props.

COLLEGE MOTEL



across from campus

Continental Breakfast

Coffee Bar

Color TV — Room Phone

1308 COLLEGE AVE.
HOUGHTON

OWNER 1955 TECH GRAD.

A New, Fun Place To Eat !



*Meals Served From "Budget
Breakfast" Through Late Evening*

Giving the Copper Country the Best in Fine Foods

Wine by Liter — Beer by
the Pitcher — Cocktails

*In Gay 90's Atmosphere
On Real Checkered Linen*

THE DOUGLAS HOUSE also **THE ONIGAMING SUPPER CLUB**
7-10 Monday thru Thursday 7-9 Sunday
7-12:30 Friday & Saturday May thru October

Sanders Candies

of Detroit

Tasty Treats

from our ovens

Decorated Cakes

our specialty

free delivery service

**CROWN
BAKERY**

Houghton, Michigan

**QUIK STOP
FAMILY RESTAURANT**

-HOUGHTON-

Wishes Everyone The Best of Luck During
WINTER CARNIVAL '76



SCHEDULE OF EVENTS

SUNDAY, FEBRUARY 1, 1976

M. U. B. Mini-Concert
"Bermuda Triangle" 8:00 p.m. Fisher 135

MONDAY, FEBRUARY 2, 1976

Queen Talent Contest
and Coronation 7:30 p.m. Fisher 135

TUESDAY, FEBRUARY 3, 1976

Stage Revue 7:30 p.m. Hancock High
Auditorium

Ice Show—Portage Lake
Figure Skating Club 7:30 p.m. Ice Arena

WEDNESDAY, FEBRUARY 4, 1976

Ice Show—Portage Lake
Figure Skating Club 7:30 p.m. Ice Arena

THURSDAY, FEBRUARY 5, 1976

Snow Statue Judging 9:00 a.m.
One-Nighter Judging 9:00 a.m.
Beard Contest Judging 12:00 p.m. Memorial Union
Special Event (Skating) 3:00 p.m. Dee Stadium
Stage Revue (Snow Statue
Winners Announced) 7:30 p.m. Hancock High
Auditorium

FRIDAY, FEBRUARY 6, 1976

Cross Country Ski Meet 9:00 a.m. Ice Arena
Parking Lot

Special Event (Snowshoeing)
3-Man Relay 9:00 a.m. Engineers Field
Cross Country 9:30 a.m. Engineers Field
Special Event (Broom Ball) 10:30 a.m. Dee Stadium

FRIDAY, FEBRUARY 6, 1976

Special Event (Skiing) 1:30 p.m. Mt. Ripley
Giant Slalom
Torch Light Parade— 6:00 p.m. Mt. Ripley
Mt. Ripley Ski Patrol
C. L. B. Concert 7:00-10:00 p.m. (2 Shows)
Sherman Gym
Hockey Game—U. of M. 7:00 p.m. Ice Arena

SATURDAY, FEBRUARY 7, 1976

Hot Dog Ski Contest—MUB 10:00 a.m. Mt. Ripley
Special Event (Dog Sled) 11:30 a.m. Cliff Drive
Hockey Game—U. of M. 2:00 p.m. Ice Arena
Sno-Ball 9:00 p.m. - 1:00 a.m.
Memorial Union
Awards Presentation 10:00 p.m. Memorial Union

THURSDAY, FEBRUARY 12, 1976

"1776" — A Musical Columet Theatre

UPPER PENINSULA POWER COMPANY



Winning Hardly Ever Comes Easy

Winning hardly ever comes easy. Almost always, it takes time, talent, and teamwork. More often than not, winning demands practice, persistence, and patience.

In a lot of ways, business is like athletics. The same qualities that make an outstanding athlete—or an outstanding team—make a business stand out from the rest.

The Cleveland-Cliffs Iron Company has been acclaimed by its peers in industry as a winner for more than 125 years. But that's only because the people who have worked for Cliffs have approached their jobs with the same spirit and commitment that good athletes bring to athletics.

Cliffs has been lucky enough to attract—and keep—people who like to win. Those who give their best shots, whether to athletics or to business, usually end up winners.

Cliffs hopes to continue attracting winners for the next 125 years.



The Cleveland-Cliffs Iron Company

James T.
HEALY
AGENCY

INSURANCE

FOR ALL YOUR INSURANCE NEEDS SEE: DON HARBIN, AGENT

DOUGLASS HOTEL BLDG.
HOUGHTON

Call 482-3380

Congratulations on a fine Winter Carnival

CENTRAL

Super Market

Downtown Houghton

Open Evenings and Sundays — Tel. 482-1040

Shelden Ave.
Downtown Houghton

THE COPPER RIVET

Exclusively

Levis* and

Adidas*

*Registered Trademark

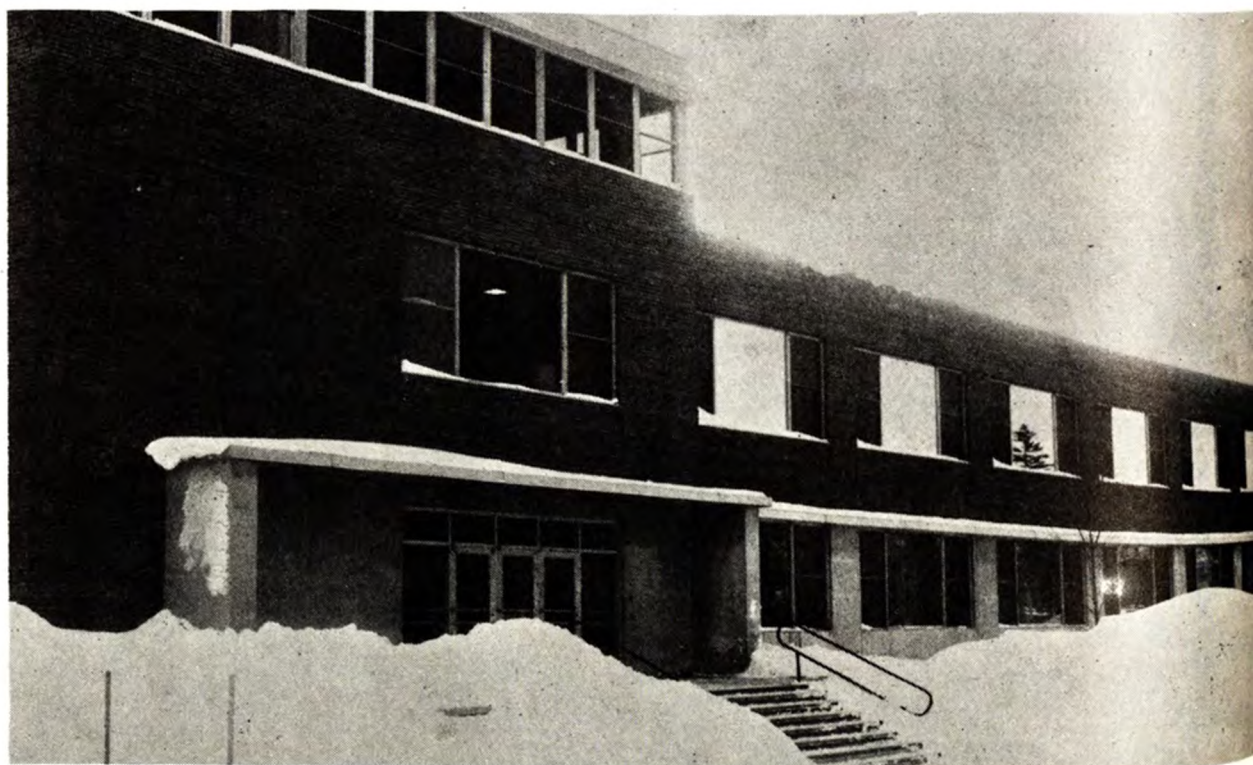




The E. R. Lauren
University Bookstore

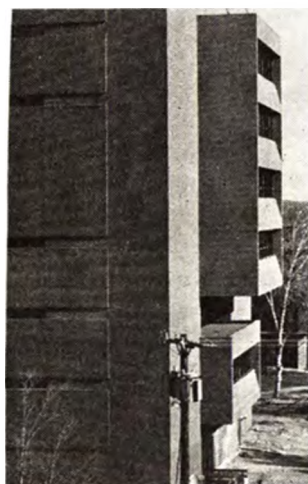
Congratulations to the Queen Candidates

The Memorial Union





"The way it was—but ain't no more." The colorful 1976 Pictorial, too, is a product of today's technology—by *The Book Concern, Printers*, of Hancock.



from

M.J. Electric, Inc.

Electrical Contractors

Chem—Met Bldg.

Coed Hall

Fisher Hall

Student Complex

Administration Bldg.

Daniell Heights

ME—EM Bldg.

EERC Bldg.

Follow Tech's campus activities all year

Subscribe to the

Michigan Tech Lode

HOUGHTON, MICHIGAN 49931

MAILED DIRECTLY TO YOUR HOME
\$4.50 for 75-76 school year
\$6.50 for 1½ year subscription

Send address and check to:
Subscriptions
Suite 122 Memorial Union
Houghton, Michigan 49931

VERTIN'S DEPARTMENT STORES

- in -

Upper Michigan

HOUGHTON—CALUMET
NORWAY — IRONWOOD

Where you can shop in confidence.

PICTORIAL SALES

SATURDAY:

during the hockey game (Student Ice Arena)
and at the Sno-ball (Union Ballroom)

SUNDAY:

8 a.m.—5 p.m. Union Lobby)

MONDAY—FRIDAY:

9 a.m.—3 p.m. (Union Lobby)

MAIL ORDERS:

may be placed during above listed hours.

Penneys
ALWAYS FIRST QUALITY

HOUGHTON 482-0510

CALUMET 337-0514



CONGRATULATIONS BLUE KEY
ON YOUR FINEST
WINTER CARNIVAL

JIM'S Foodmart

Houghton

**For Everyday
Parties and
Special Occasions**

Specializing in
Fine Foods
and
Beverages



SWIFT HARDWARE

When you want . . . —real friendly service

—a real big selection —the lowest prices in town

314 SHELDEN AVE.

HOUGHTON, MICHIGAN

KIRKISH

FURNITURE

HOUGHTON



Copper Country's Largest
Home Furniture Center

KING COIL BEDDING

SPEED QUEEN WASHERS AND DRYERS



ELIAS BIG BOY Family Restaurant

515 Sheldon Ave., Houghton
482-8400

OPEN 24 HOURS ALL-YEAR ROUND





HOUGHTON BOTTLING CO., INC.

13 N. Bridge St.
Houghton, Michigan
(313) 482-4131



*Established in 1922 by Charles Nikula
Owned and Operated by Third Generation
54th Anniversary in 1976*



Sammy Award

sammy sez started out in the 50's as a "typical toot" and his letters were biting comments about life here at da Tech. The long, cold winters and the lack of women were all problems sammy talked about.

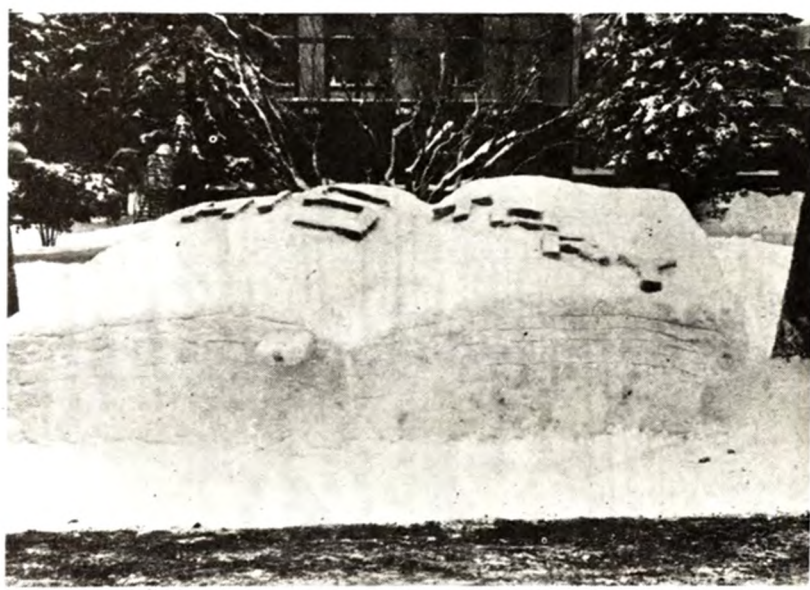
Winter Carnival was a big event then too. Soon sam became involved, with his name given to the award for the "one-nighters". Most of these statues were built in one night with themes that were too suggestive or were comments about Tech, the US or just life in general. Politics, religion and sex — nothing was left untouched.

In keeping with this fine tradition, the "sammy awards" are still handed out every year, now by members of BLUE KEY. This year for example, one-nighters were built on such themes as the over-crowded dorms; the Union's "PACK 'EM IN", and what life at Tech was all about 200 years ago; the Upper Daniell Heights' teepees and Indian camp.

as sammy sez hisself wood say, "go out an sea da statues fer yerself. ya' mite git an idee fer nex' year!"



Over the Hill Gang

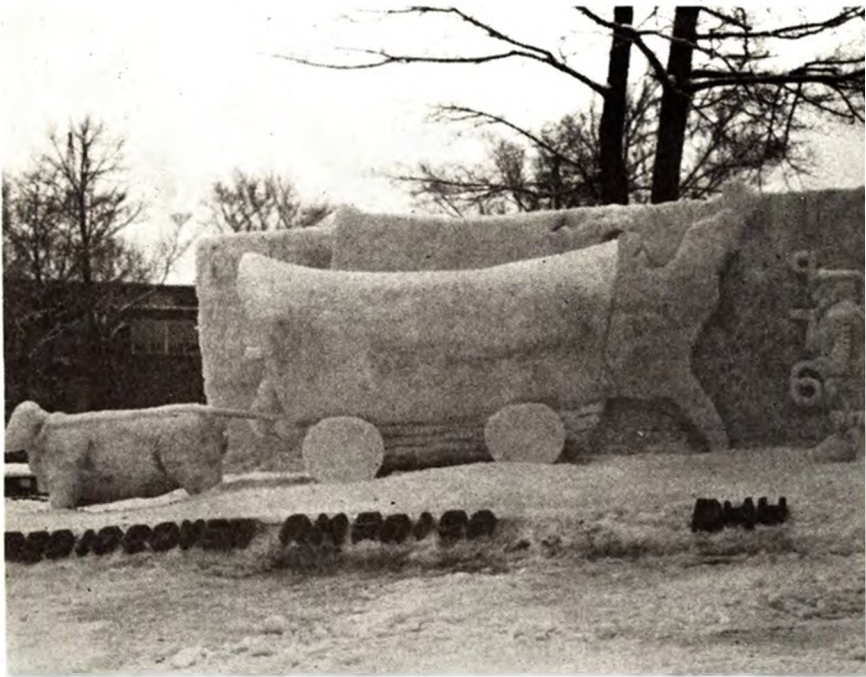




Suite Hearts



T.K.D.



St. Albert



Kappa Delta Psi

Lords



Windsor House



Nails



Phi Kappa Tau





Sigma Phi Epsilon



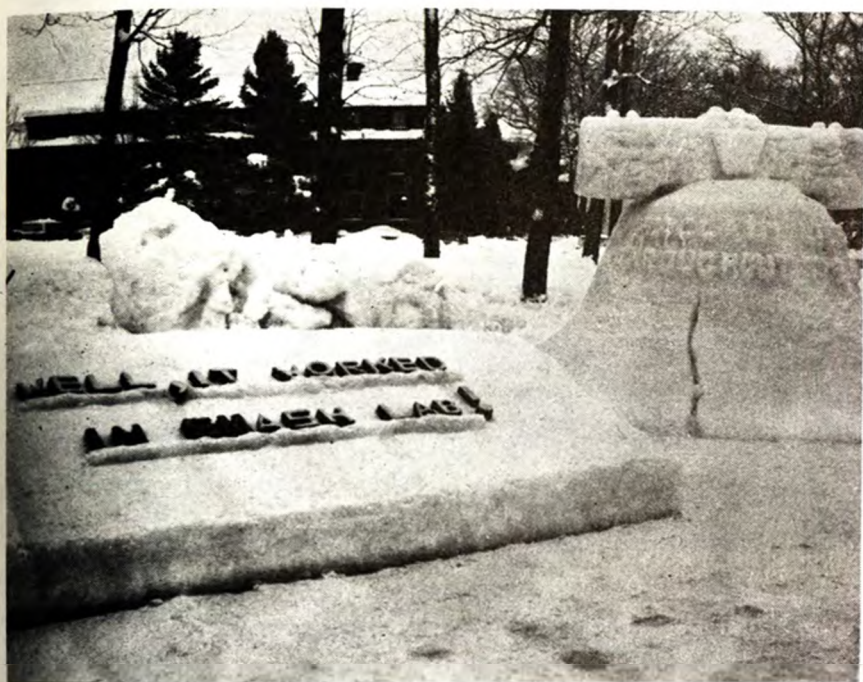
Tombstone



D.H.H.

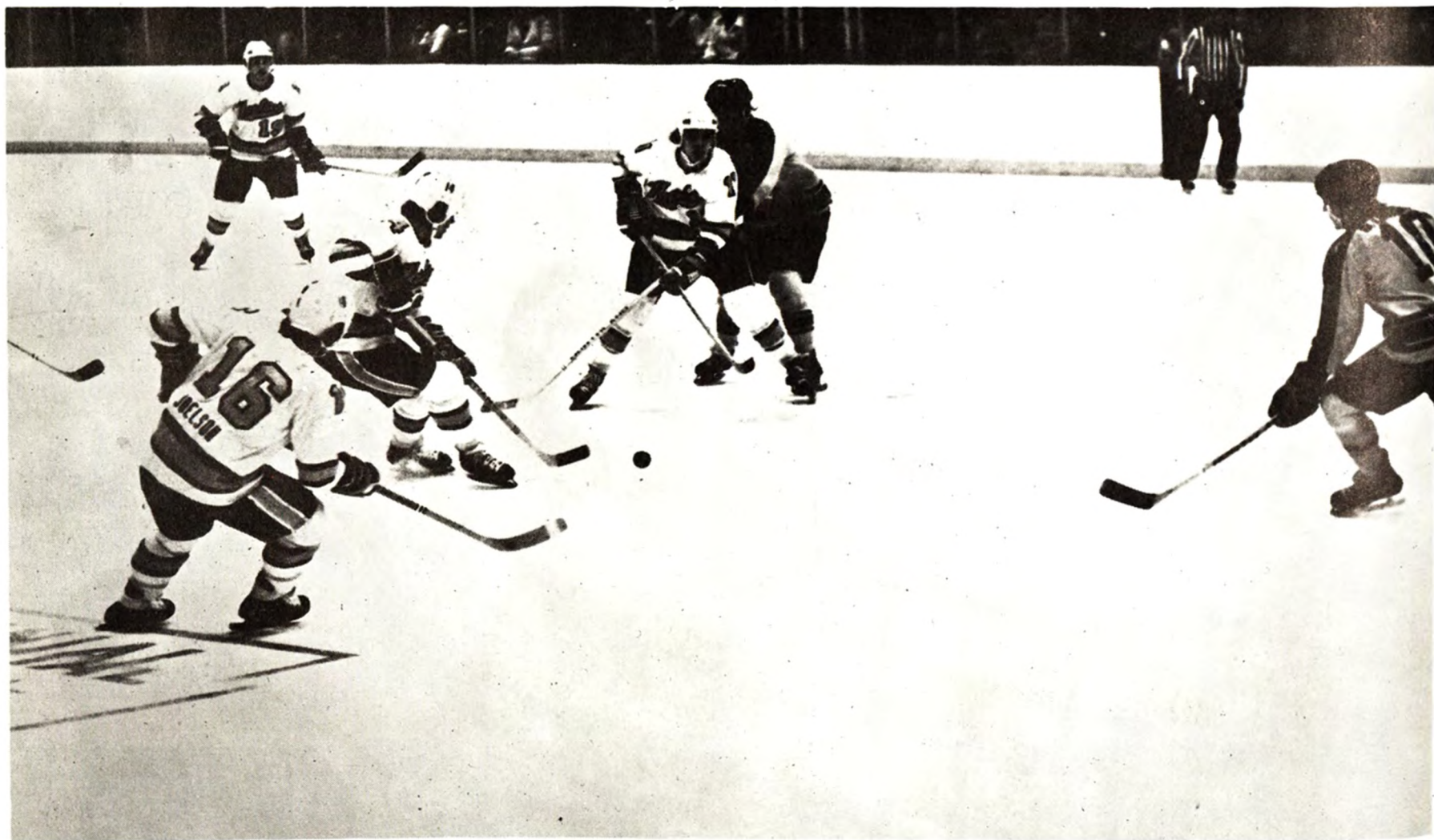


Alpha Phi Omega



One of the oldest snow statues, made by John Marshal about 1912

Huskies Over Wolverines 6-4

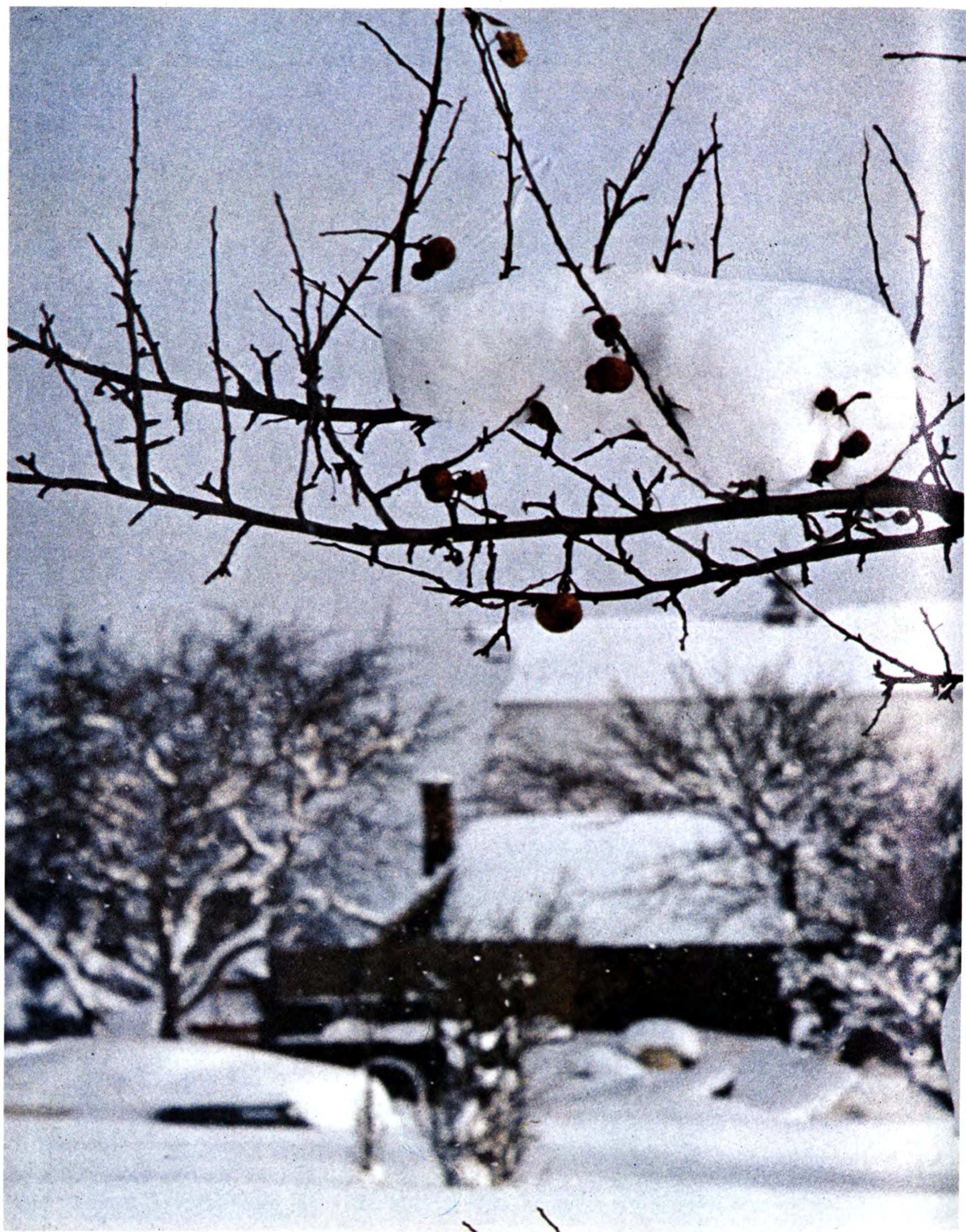




A Walk Through Wads







Icy Entertainment

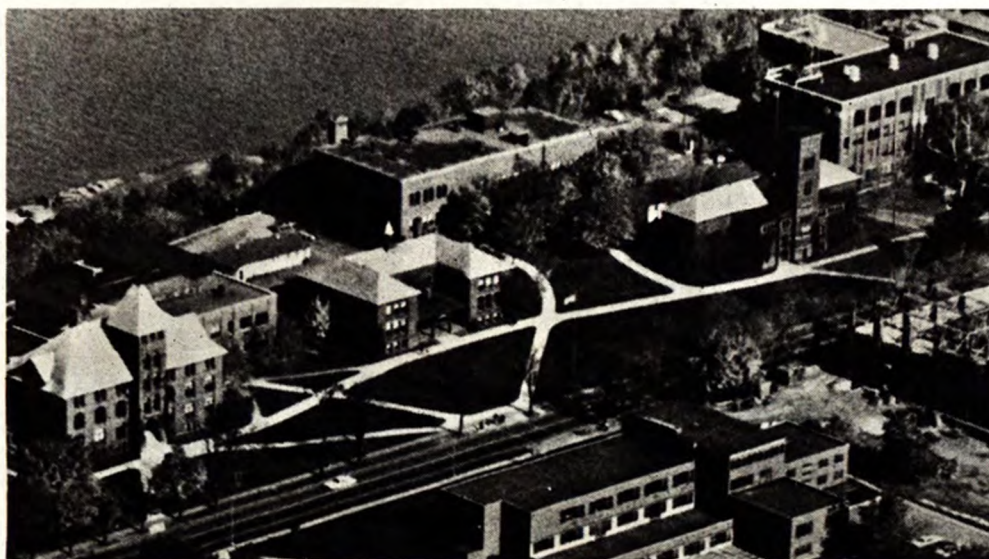
"Around The World On Ice" presented by the Portage Lake Figure Skating Club, Wednesday and Thursday of Carnival Week, entertained many students and people from the area.

Authentically costumed skaters performed routines displaying various cultures of the world from Europe to the Orient. The grand Finale was the joyous bringing together of these cultures.



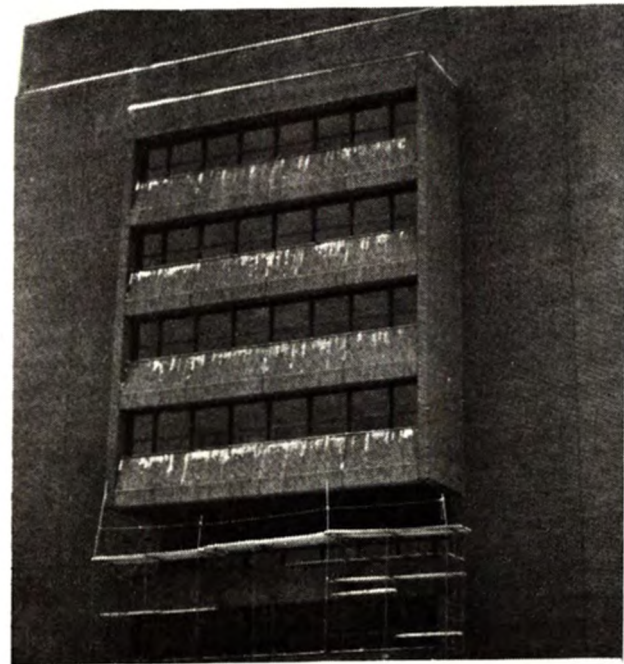
Important Dates In Tech History

| | |
|------|--|
| 1928 | Army ROTC program established. |
| 1930 | Hotchkiss Hall completed. First Army ROTC commissions awarded. |
| 1931 | Addition to Koenig Hall completed. |
| 1933 | First degree awarded to a woman student. |
| 1935 | Dr. Grover C. Dillman elected president. |
| 1936 | Forestry curriculum established. |
| 1937 | Engineering Council for Professional Development founded; MTU one of the original members - a charter member. |
| 1938 | Douglas Houghton Hall completed. First MTU Olympic selection (Eddie Maki - Hockey). |
| 1940 | Hubbell School acquired for Department of Forestry. Originally built in 1888. |
| 1942 | Second addition to Keoning Hall completed. |
| 1943 | Dee Stadium given to Tech by James R. Dee. |
| 1944 | Smith's House, the first women's residence Hall, purchased. |
| 1945 | Portage Lake Golf Course acquired by the college. |
| 1946 | Sault Ste. Marie branch campus opened. |
| 1947 | Mont Ripley ski area opened by the college. Air Force ROTC unit established. |
| 1948 | Tech joins other associated colleges in Argonne National Laboratory work. |
| 1949 | Sherman Gymnasium completed. First Air Force ROTC Commissions awarded. |
| 1951 | Central heating plant completed. |
| 1952 | Memorial Union Building completed. Installation of artificial ice in Dee Stadium. |
| 1954 | Ford Forestry Center given to college by Ford Motor Co. |
| 1955 | Ores. Research Building completed Institute of Mineral Research established. Wadsworth Hall completed. |
| 1960 | Seventy-fifth anniversary of college observed. Married Student Housing center opened. Nuclear Engineering curriculum established. |
| 1961 | Nobel Prize awarded to Dr. Melvin Calvin, BS in Chemistry, 1931; First Tech graduate to receive Nobel Prize. Department of Biological Sciences authorized. Quandt property purchased. |
| 1964 | January 1, name changed to Michigan Technological University. Fisher Hall completed. |
| 1965 | Dr. Raymond Smith became president of MTU. Dr. Van Pelt became the first consulat. |
| 1966 | New Library was moved into. |
| 1968 | New Administration Building completed, so was the new Chem-Bio High-rise. |
| 1970 | Ide Arena completed, First phase of Athletic complex. |
| 1971 | ME-EM Building opened. |



Yalmer Mattila Contracting, Inc.

General Contractors
for the new
Electrical Energy
Resources Center



OPEN UNTIL
3:00 a.m.
Friday and Saturday



482-4822
482-4821

We Deliver - 35¢ charge

TOGO'S SUBMARINE SANDWICHES

*Best Wishes for a
Successful Winter Carnival*

Mc Gann Building Supply, Inc.
612 Hancock Avenue
Hancock, Michigan 49930

When you plan - See Mc Gann

Open 6 days a week - All Day Saturday





Forestry Club - "Gold Stinger"



Phi Kappa Tau - "Real Ride of Paul Revere"



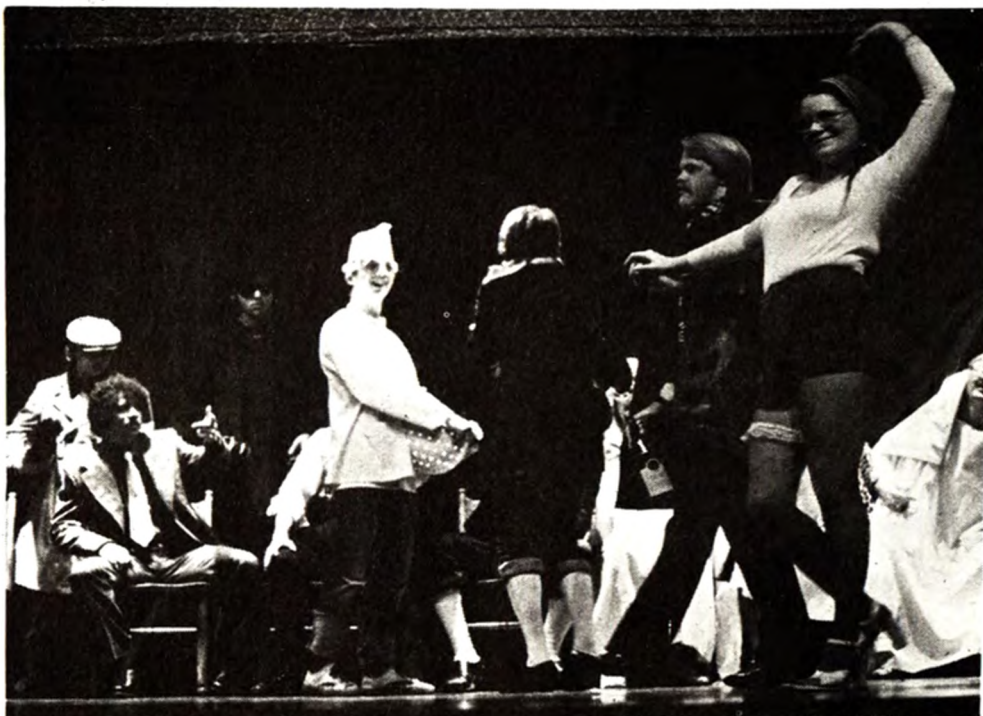
Theta Chi - "Tea for Two"

Sigma Tau Gamma - "Two Hundred Years Ago"



Tau Kappa Delta - "Making of a President"





Douglas Houghton Hall - "The Manhattan Transfer"

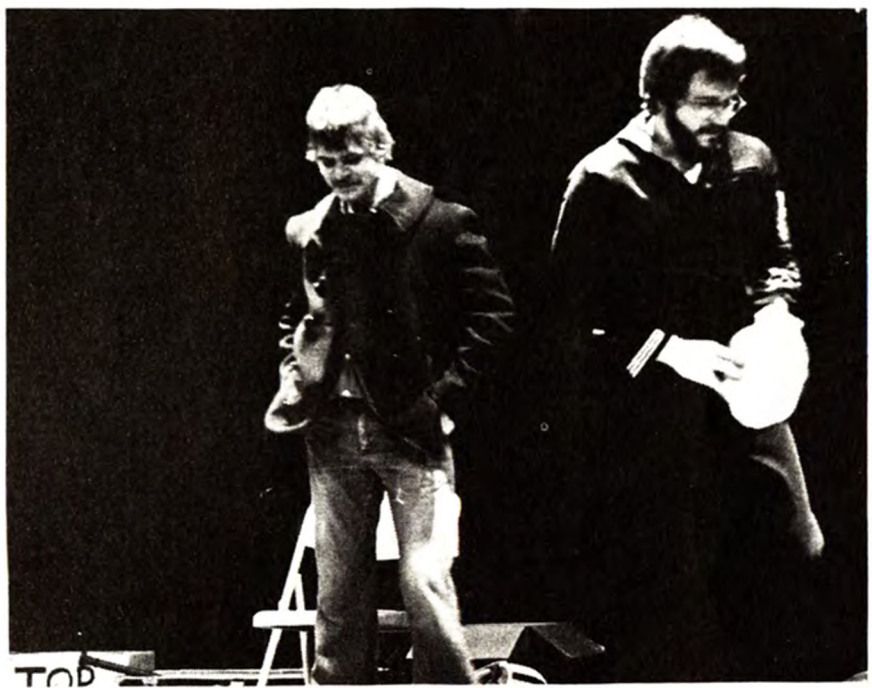


Delta Sigma Phi - "American Absurdity at Plymouth Rock"





Komoniwannaleiya - "United As One"



Theta Tau - "Top Secret"



Sigma Phi Epsilon - "Ding Dong Caper"

Herman Gundlach, Inc

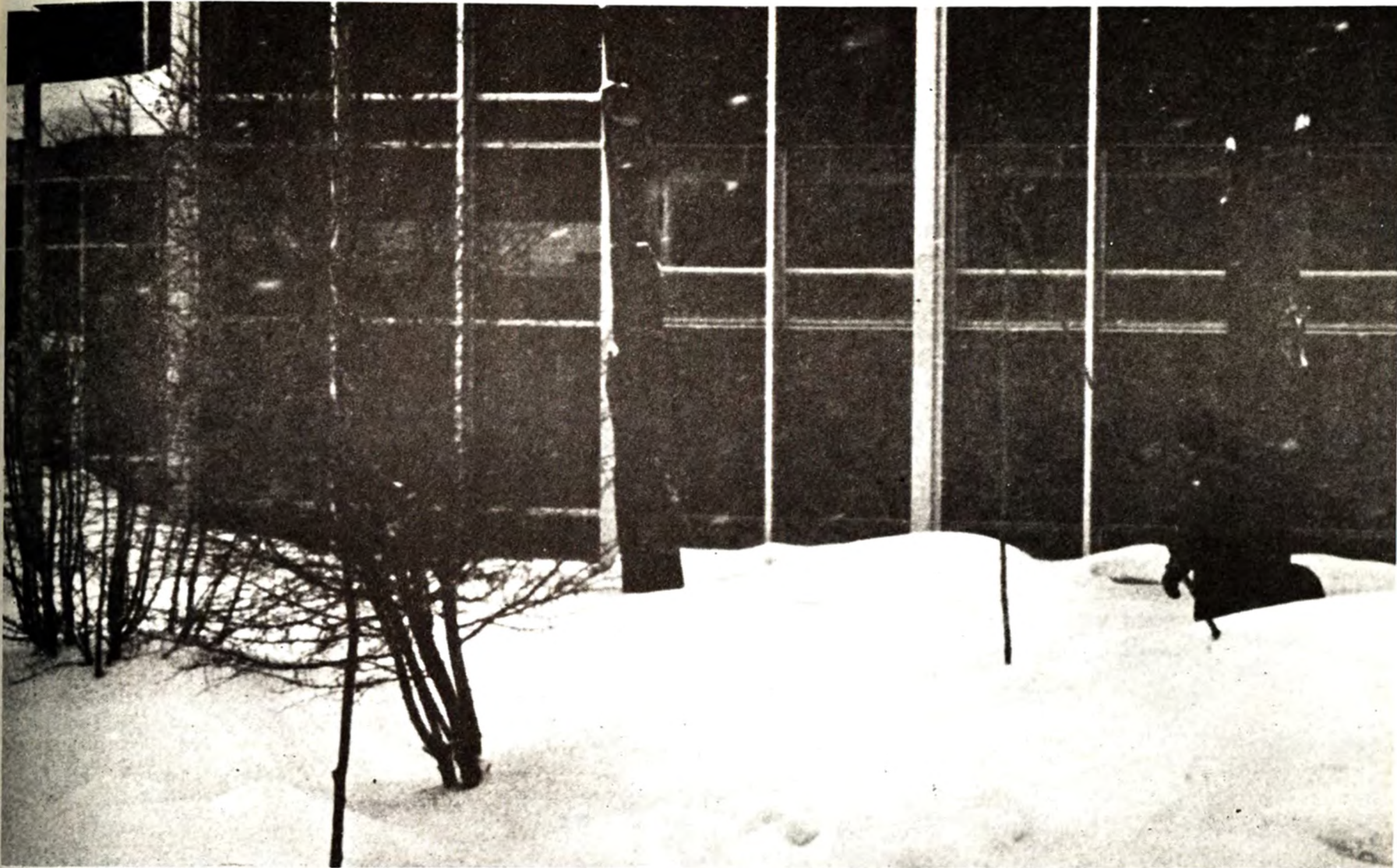
The General Contractor
Building Construction


58 NORTH HURON STREET
HOUGHTON, MICHIGAN
(906) 482-2480

Copper Country Concrete Corporation

58 NORTH HURON STREET
HOUGHTON, MICHIGAN
(906) 482-0601








Russell Stover
CANDIES

**ROY'S
PHARMACY**

HOUGHTON

James E. Monette, R.Ph.

Come in
out of the cold
into the
WARM...



The Library

Eat, drink &
be merry!

62 N. ISLE ROYALE ST. 482-6211

WE HAVE THEM

Cosmetics
Films
Toiletries

The store
of personal service

**WEST SIDE
PHARMACY**

120 Shelden Ave.
Houghton, Michigan

Prescription Specialists

Tel. 482-3340

Package Liquor — We Deliver

(Squirtfruit)
MADE WITH REAL ~~GRAPEFRUIT~~
RIPENED ON THE TREE



Coca-Cola Bottling Co., Hancock

Compliments of

Cohodas-Paoli Co., Inc.

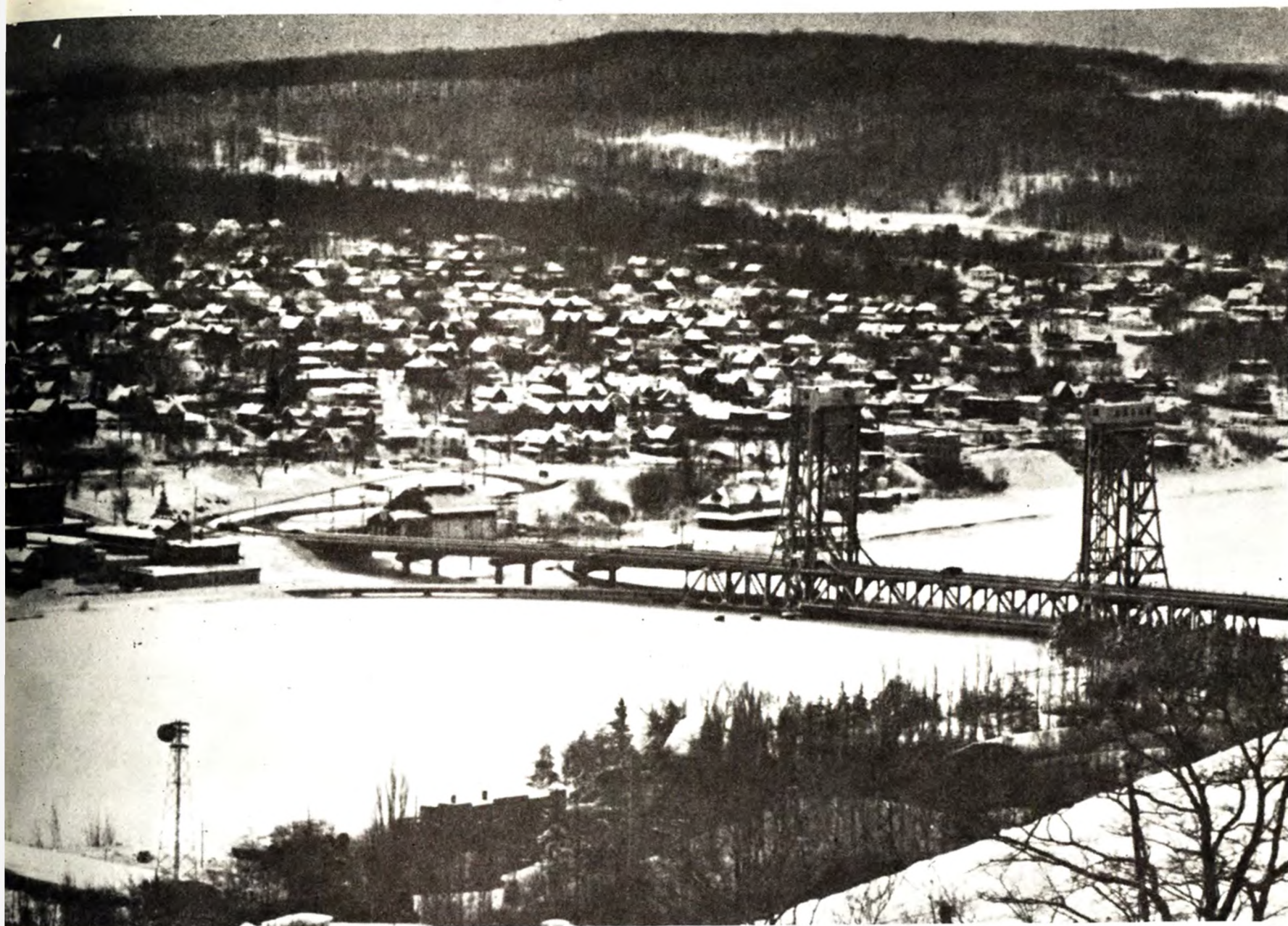


wholesale

Fruits-Vegetables-Groceries
Institutional and Frozen Foods

Houghton — Ironwood





I'm not much on making speeches, but I do wish to thank the many people who were kind and helpful enough to point me in the right way when I needed it. Those printing marvels at the Book Concern, Matt Laitala, Norman Lassila, and the whole crew, deserved not only my thanks, but yours too, for getting this book out now when you can enjoy it, instead of a month from now. When I started putting this book together I thought a "paste-up with windows" was some kind of pre-fab home, but thanks to last year's editor, Kim Stubblefield, I soon learned how to paste on copy, cut out windows for pictures, and eventually put together a pictorial. Rob Horning also deserves special credit for bringing in more ads than last year's pictorial! I thank my photographers for getting quality pictures to me in such short time, and I send a big thanks to the rest of the crew in room 122 Memorial Union. Last, and by certainly no means least, goes a very, very, special thank you to my wife Nancy, who was the person who got me started on this thing in the first place, and made me keep going when it got rough.

As the sun rises this Saturday morning, February 7, 1976, I hand in the last pictures needed to finish this year's Winter Carnival pictorial, and I am done.

Robert Laitala

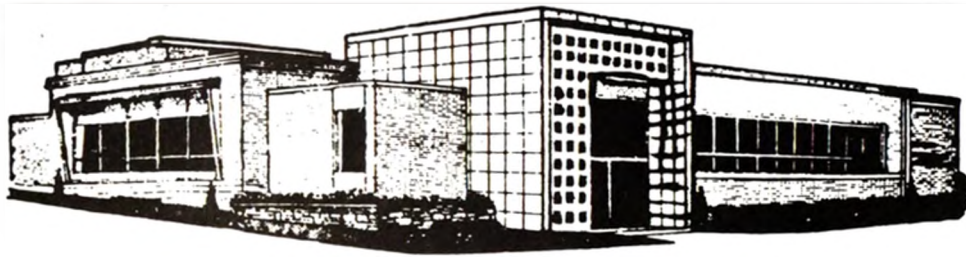
Listed Below are the charter members of the MTU Winter Carnival Booster's Club. The businessmen of the Copper Country welcome all the visitors to MTU's Winter Carnival and hope your visit will be an enjoyable one. The men of Blue Key would like to extend their sincere thanks for this financial support.



WINTER CARNIVAL BOOSTER CLUB

Chippewa Motel
Copper Crown Motel
Douglass Hotel
Downtown Motel
Finlandia Restaurant
Gil-Mar Gift Shoppe
Gino's Restaurant
Golden Pheasant
Hancock Texaco
Haug's Jewelry
Holiday Motel
Jim's Foodmart
Joffe's
Kentucky Fried Chicken
Lake View Lounge
Library Bar
Nutini's Supper Club
Swift's Hardware

The Superior National BANK AND TRUST COMPANY



It was a great pleasure serving you the past year.

*"The Bank Of
Superior Service"*

A FULL
SERVICE
BANK

HANCOCK-BARAGA

FREE PARKING

DRIVE-IN BANKING



Each depositor insured to \$250,000
FDIC
FEDERAL DEPOSIT INSURANCE CORPORATION

BANKING HOURS:

Monday thru Thursday
9:30 to 3:00

Friday 9:30 to 3:00
and 5:00 to 8:00

Friday Drive-In Window
9:30 to 8:00



