



Michigan Tech Lode Winter Carnival PICTORIAL

15th Annual

February 1978



CHILLER THRILLERS

Pour yourself a challenge.

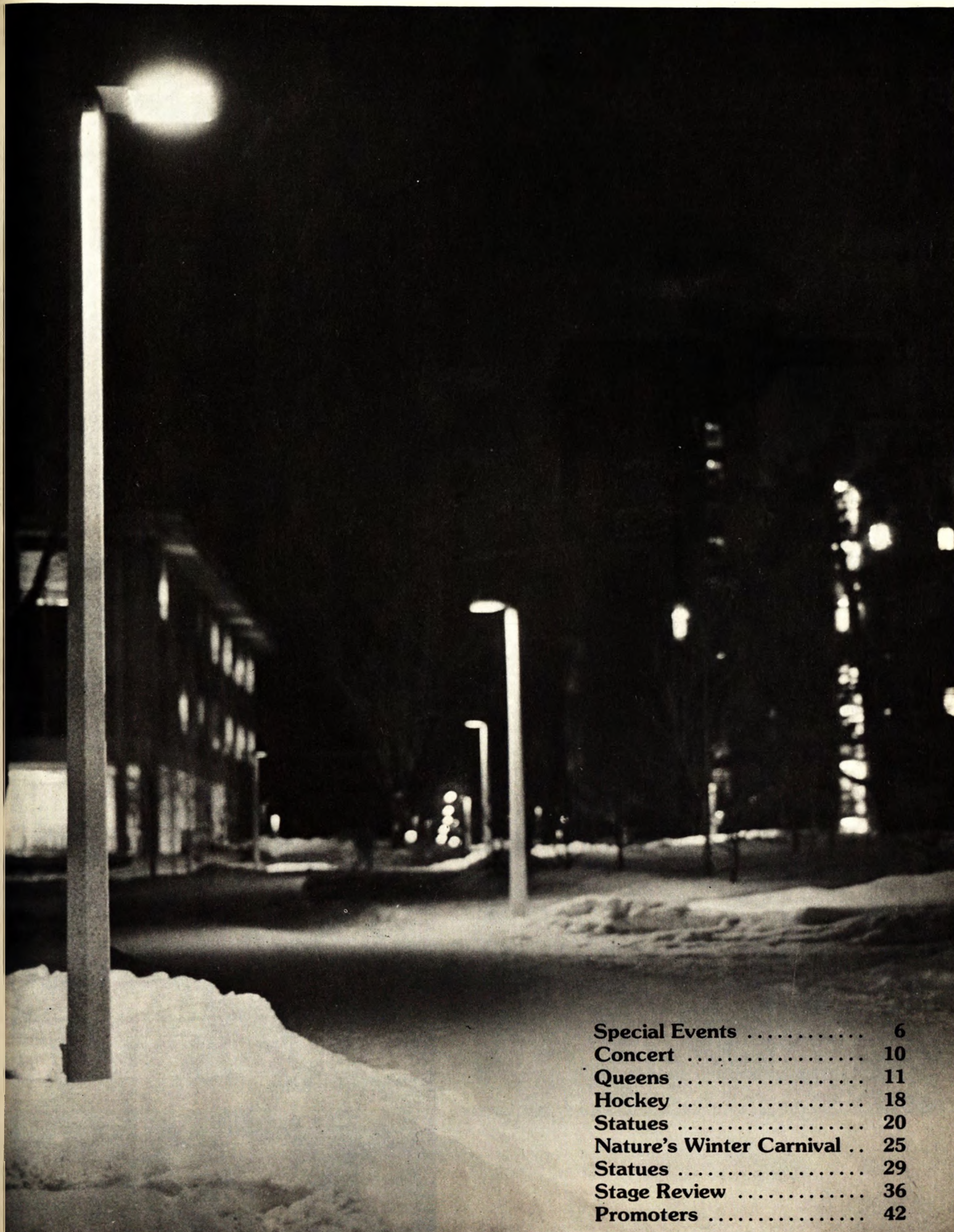
You'll never know how great Pabst Blue Ribbon tastes until you take our challenge. Taste and compare the flavor and quality of Pabst with any other premium beer. You'll never go back to the beer you've been drinking because Pabst quality means the best tasting beer money can buy.

You'll understand why Pabst is the overwhelming number one favorite in Milwaukee, beer capital of the world.

Pabst. The quality has always come through.

PABST BREWING COMPANY
Milwaukee, Wis., Peoria Heights, Ill., Newark, N.J.,
Los Angeles, Calif., Pabst, Georgia.





Special Events	6
Concert	10
Queens	11
Hockey	18
Statues	20
Nature's Winter Carnival ..	25
Statues	29
Stage Review	36
Promoters	42

Nestled in a small valley alongside Portage Lake, Michigan Technological University is located in one of the most scenic areas in the United States. A rugged land, the Copper Country boasts of outstanding waterfalls, placid lakes, and hundreds of square miles of dense forests. The early fall, with its menagerie of color and invigorating weather, draws people outdoors. As fall progresses and temperatures drop, the first signs of winter appear. The November storms off Lake Superior sweep in and it begins to snow. By Christmas over 80 inches will have fallen.

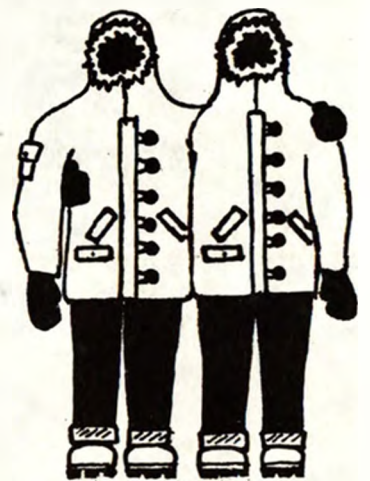
For some students the snow and cold weather are a nuisance. Others find it an invitation for skiing or exploring back wood trails.

Months pass and the snowfall continues. Finally, just a few weeks before classes terminate for the year, the snow fall ceases, the sun comes out and spring begins.

Soon, its time to go home, and when they do, most people go changed. The peace and serenity or the land they left behind remains with them. In time it may fade away, but every so often that peace continues on and grows, touching other lives.



3347
L63
1978
C.1
ARCH



Standing in stark contrast to the snow covered land are the modern buildings of Michigan Tech. Specializing in engineering and technical fields since 1885, Tech possesses a dedicated and experienced faculty together with modern facilities. An excellent student teacher relationship and a strong school spirit provide a healthy attitude on campus.

Opportunities for involvement are almost unlimited. There exist many student organizations ranging from clubs such as the Cycling and Flying club, to service and social groups, to organizations such as the Student Council, Lode, and Keweenawan.

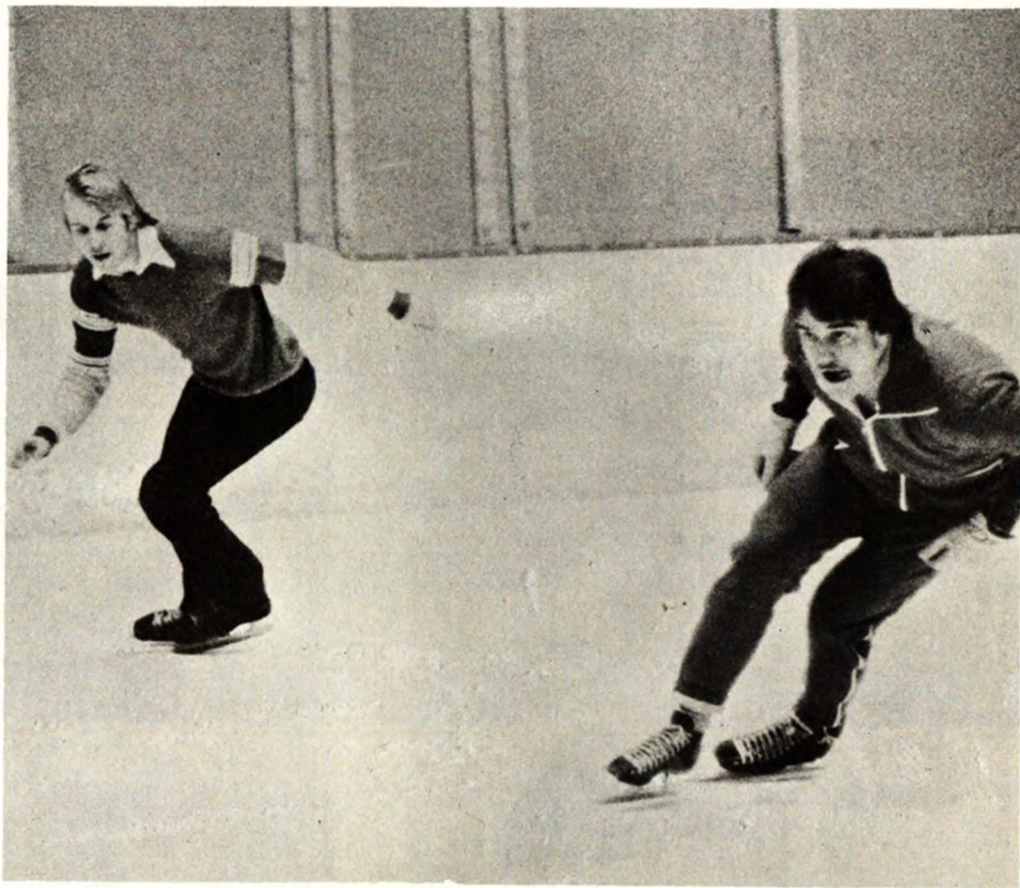
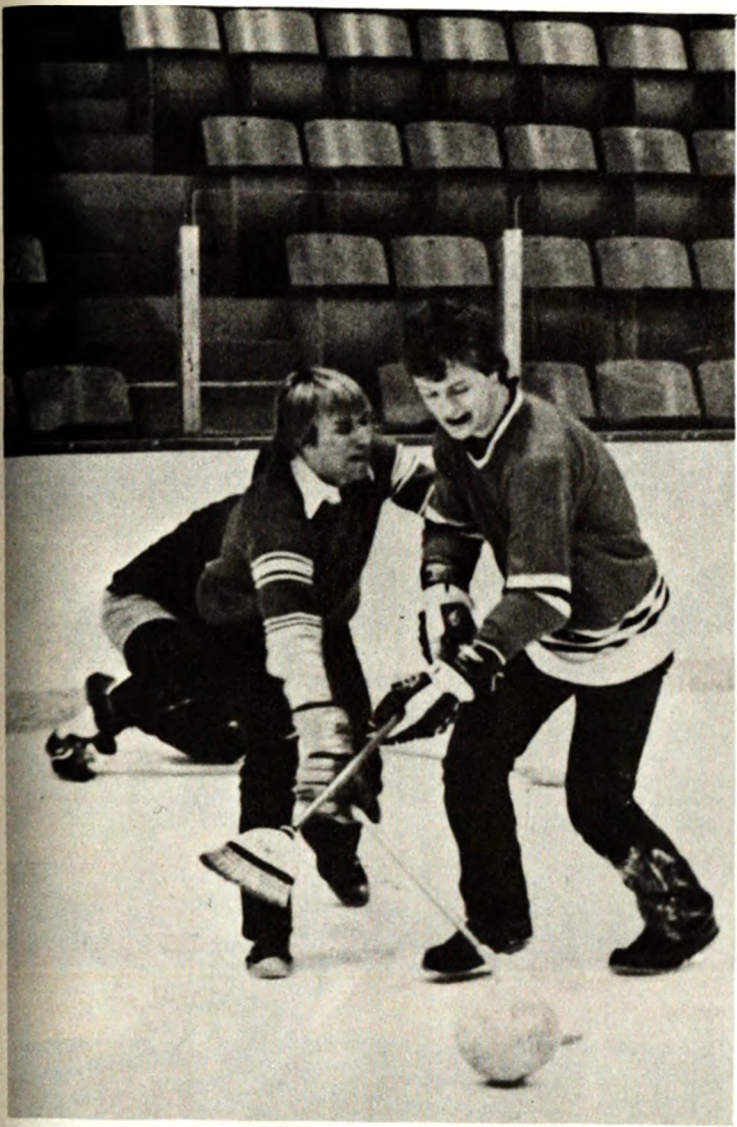
The largest student activities during the year are K-Day, Homecoming, and Winter Carnival. K-Day takes place during the peak of the fall season as students and faculty head out to McLain State Park for an afternoon of frisbees and hot dogs. Homecoming occurs later in fall and includes such activities as a Hobo Parade, bed races, and a 15 man pyramid building competition. The first weekend in February is Winter Carnival and that is what this **Pictorial** is all about.

Participation, Competition, Exhaustion



(Top) Human Huskies strain to pull sled.
(Above) A fallen skier gets ready to try again.
(Right) Skier maneuvers down slalom course.





(Left) Two players fight for possession in broomball.
 (Right) Speed skaters round turn in relay.
 (Bottom) Goalie makes save.

Feet And Faces

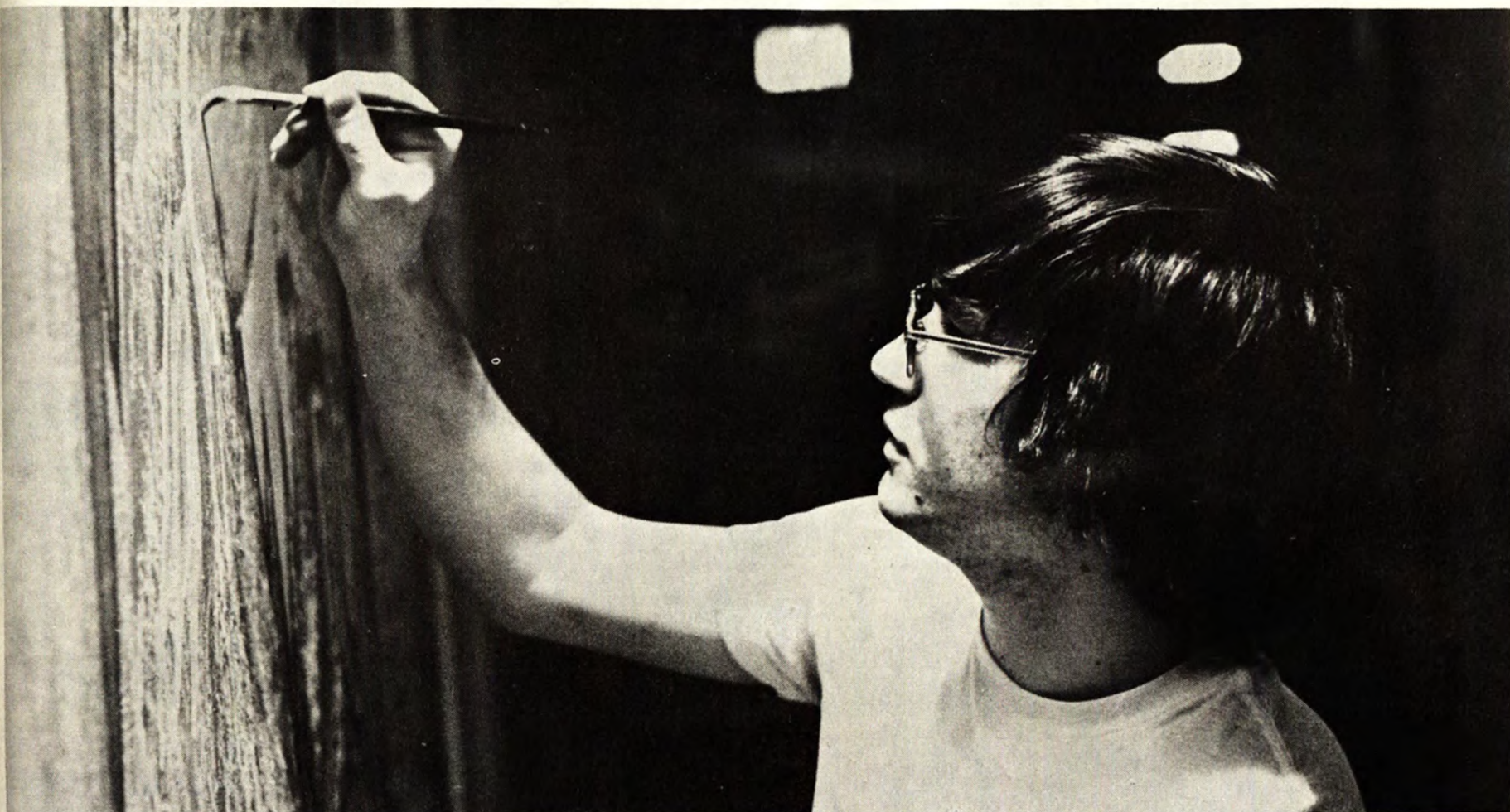


(Left) Snowshoer bites the snow.

(Right) Three snowshoers battle for position.

(Bottom) Entrants in the old full beard competition.





Walls And Brushes

During Winter Carnival, students living in Wadsworth Hall express themselves through wall paintings. Ideas for paintings come from many sources including comic strips and album covers.





Singing, Joking, Acting



Winter Carnival attracted celebrities to Tech. Jimmy Whig (above) was the Master of Ceremonies for Tuesday night's Stage Review. Edmunds and Curley (top) introduced the skits Thursday night and also performed a concert with Megan McDonough (right).

Sun and Snow



Each year, during Winter Carnival, Michigan Tech sends a shipment of snowballs to Southwest Texas State University in San Marcos, Texas. These snowballs are used in an organized school-wide snowball fight. Other traditions, which have since evolved, include the rewarding of their beauty queen with a trip to Michigan Tech for Winter Carnival Week.

1978

Winter Carnival

Queen Candidates

Queen competition began last December when preliminary interviews were held to narrow the number of candidates down to ten.

In the weeks that followed there were radio interviews, formal interviews with the judges and rehearsals for the Talent Show.

The candidates were judged on their performance in the Talent Show and on their formal interviews. Points obtained in these two areas were added to points gained in a student vote to determine the Carnival Queen.

JO ANNE HOFFMAN ►

JoAnne is a sophomore Math major from Livonia, Michigan. Her interests include playing the accordion, dancing, sewing and snowmobiling. Sig Rho fraternity sponsored her.



◄ TAMMY ASHLEY

Tammy is a sophomore majoring in Technical Writing and Communication from Vanderbilt, Michigan. She enjoys singing and playing the piano along with cross country skiing and camping. Da Lion Haus, a house in coed, sponsored her.



◄ MICHEL WERCINSKI

Michel, a sophomore double majoring in Business Administration and Nursing, is from Iron River, Michigan. She enjoys playing tennis, hiking, embroidery and surfing. Delta Sigma Phi fraternity sponsored her.



JOY WICKSTRAND ►

Joy is a freshman Accounting major from Traverse City, Michigan. She is interested in dancing, crocheting, skiing and skating. Stagger Inn, a house in Wads, sponsored her.



LOU ANNE SZEWCZYK ▶

LoAnne is a freshman majoring in Chemical Engineering from Farmington Hills, Michigan. Her interests include playing the flute, skiing and snowshoeing. Broadway, a house in coed, sponsored her.



◀ KIM SILFVEN

Kim is a sophomore in Pre-Law from Stambaugh, Michigan. She is interested in the arts, writes poetry and short stories, and likes to ice skate. The International Club sponsored her.



Beauty, Poise, Talent

▼ LORETTA GUST

Loretta is a sophomore in Chemical Engineering from Ironwood, Michigan. Among her interests are dancing, bowling, sewing and cooking. Alpha Kappa Psi fraternity sponsored her.

KATHLEEN McCLEAR ▶

Kathleen is a junior in Civil Engineering from Jackson, Michigan. She enjoys music, reading and writing poetry and sports. Guys and Dolls from Coed sponsored her.



◀ SALLY STEVENS

Sally, a Business Administration major, is from Des Plaines, Illinois. She likes winter sports, swimming and travelling. Sigma Tau Gamma fraternity sponsored her.

▲ GWEN BROWN

Gwen, a freshman majoring in Technical Communications, is from Ishpeming, Michigan. She enjoys writing, traveling and winter sports. Theta Tau fraternity sponsored her.



Lights, Makeup, Butterflies



(Top) Tammy sings a selection of love songs of 1977 (Above) JoAnne plays a couple of pieces of music entitled "Something Different" (Right) Joy performs a hat and cane dance to "In the Mood"





(Left) Michele acts out a portion of West Side Story entitled "Gee, Officer Krupke" (Below) Lou Anne plays a selection of music called "Concertino"



(Above) Loretta does a dance to music from Fiddler on the Roof called "Peasant's Dream" (Left) Kim performs a pantomime improvisation of a selection from Godspell entitled "Crucifixion-Resurrection"



(Top) Sally plays a selection of music accompanied with a slide presentation entitled "In My Life" (Above) Kathy sings "A Portrait in Song" (Right) Gwen does a dramatic reading of Ray Bradbury's "The Lonely One"



1978 Queen: Gwen Brown

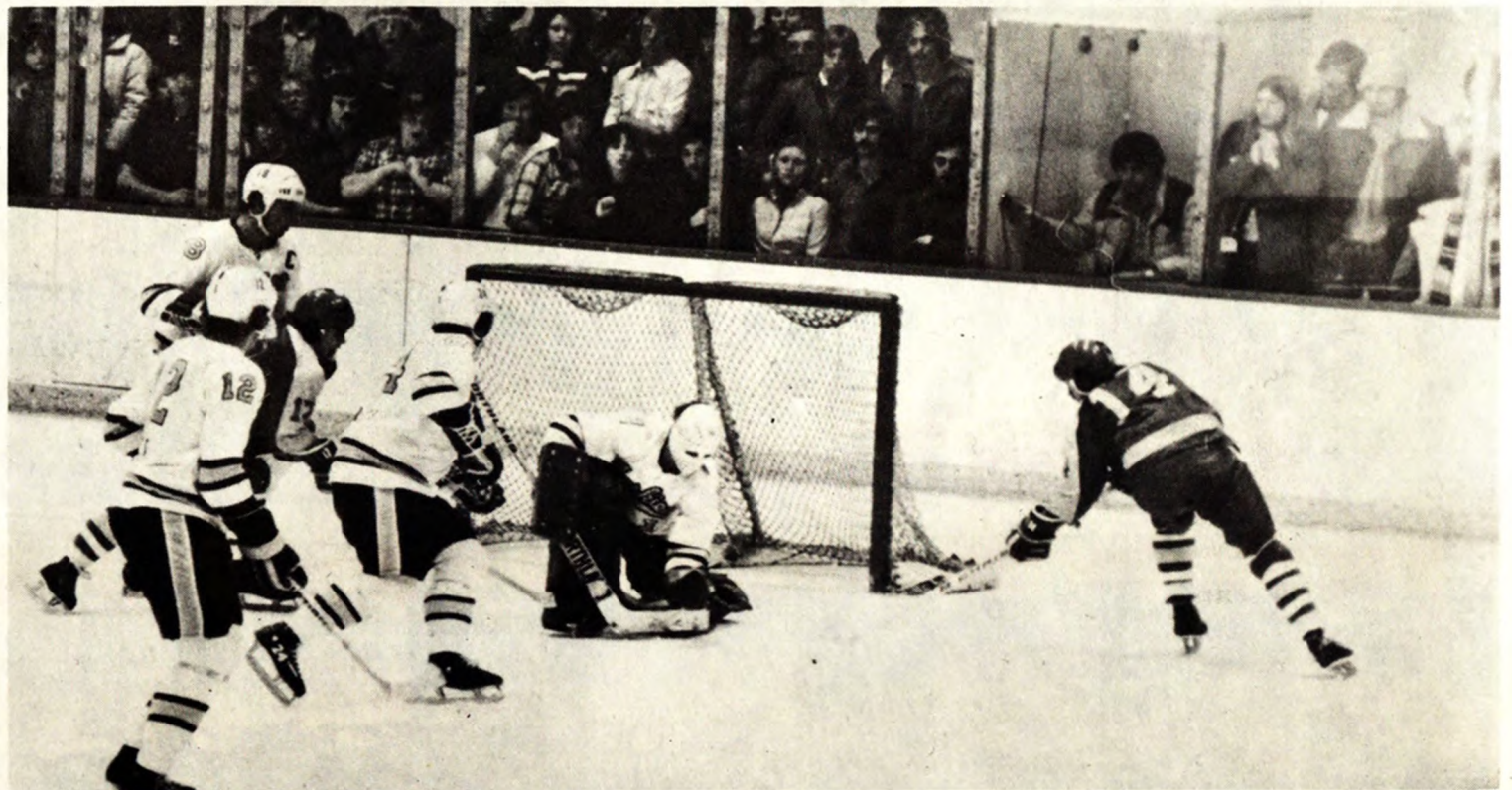
1st Runner Up: Tammy Ashley

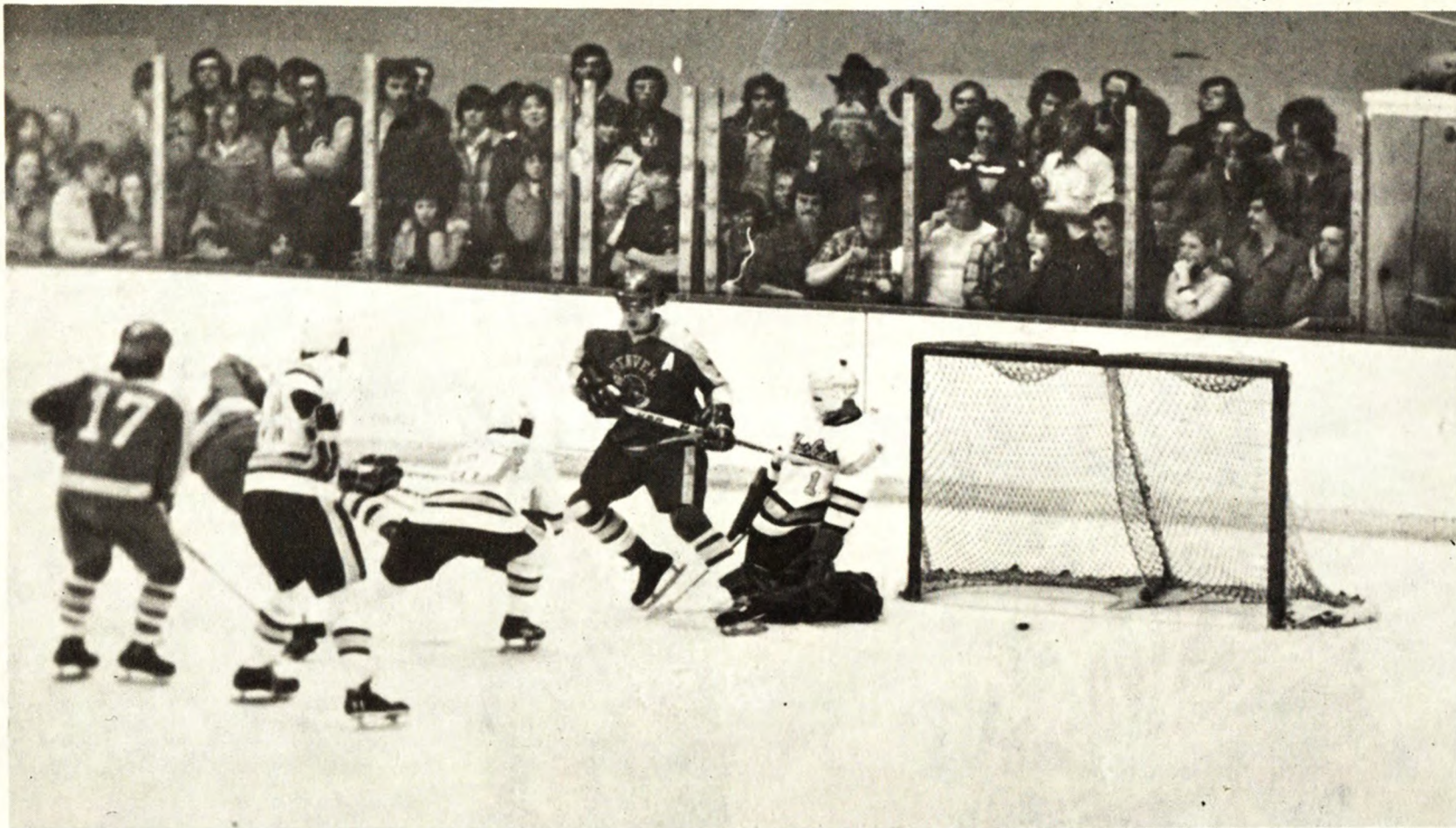
2nd Runner Up: Joy Wickstrand

Miss Congeniality: Michele Wercinski and Tammy Ashley



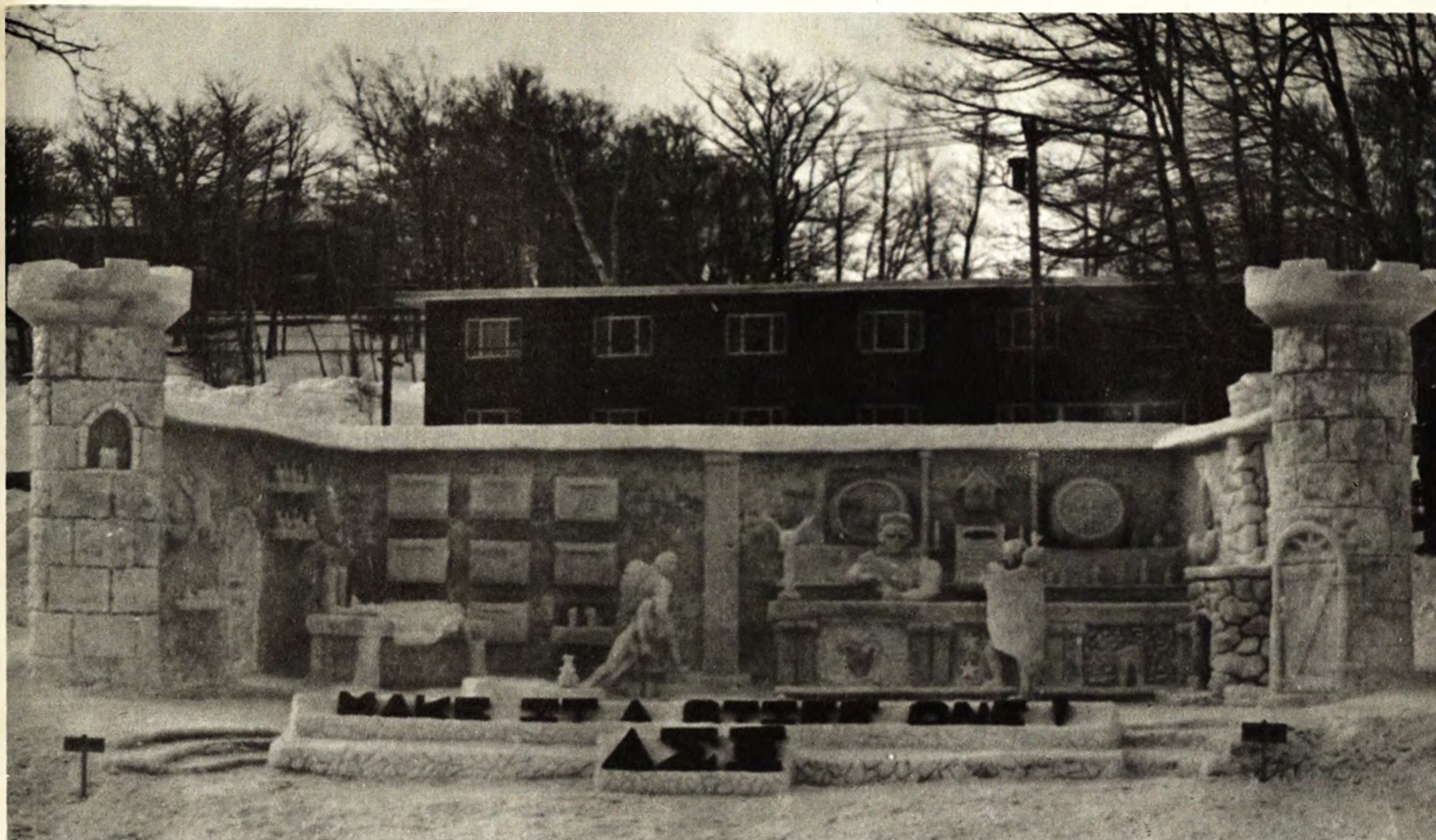
Denver Defeats Tech 2 - 1



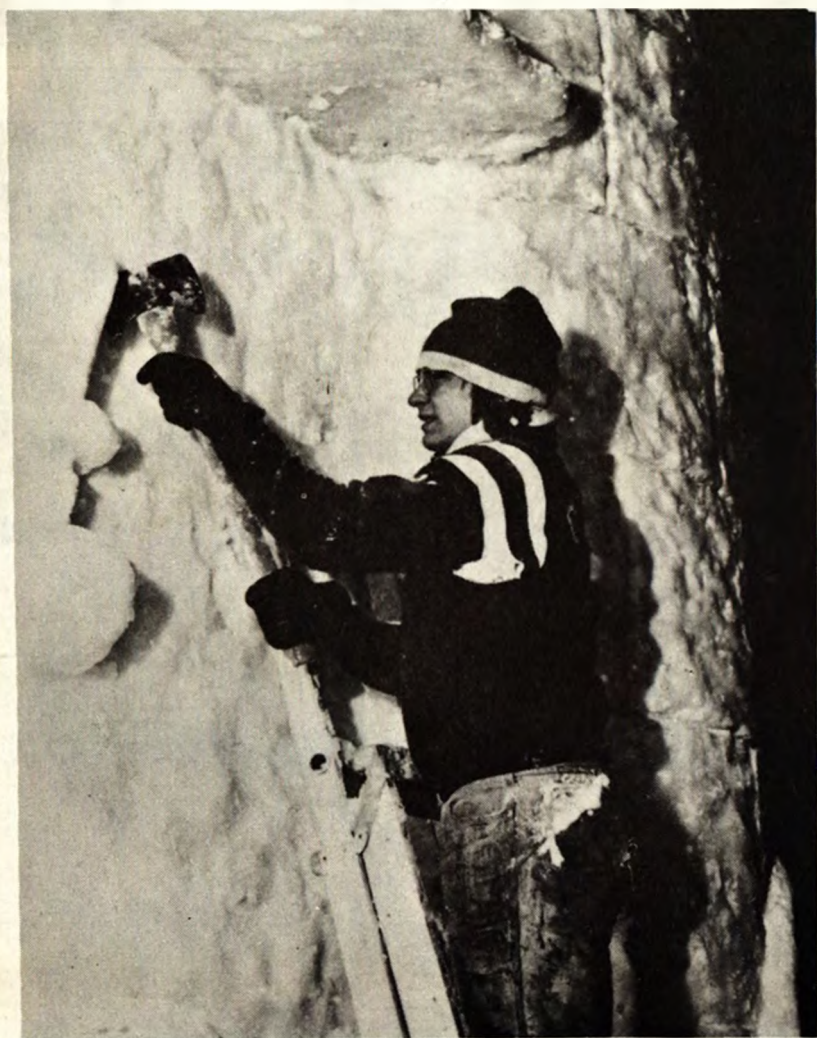


1st Place Class A





"Make it a stiff one"

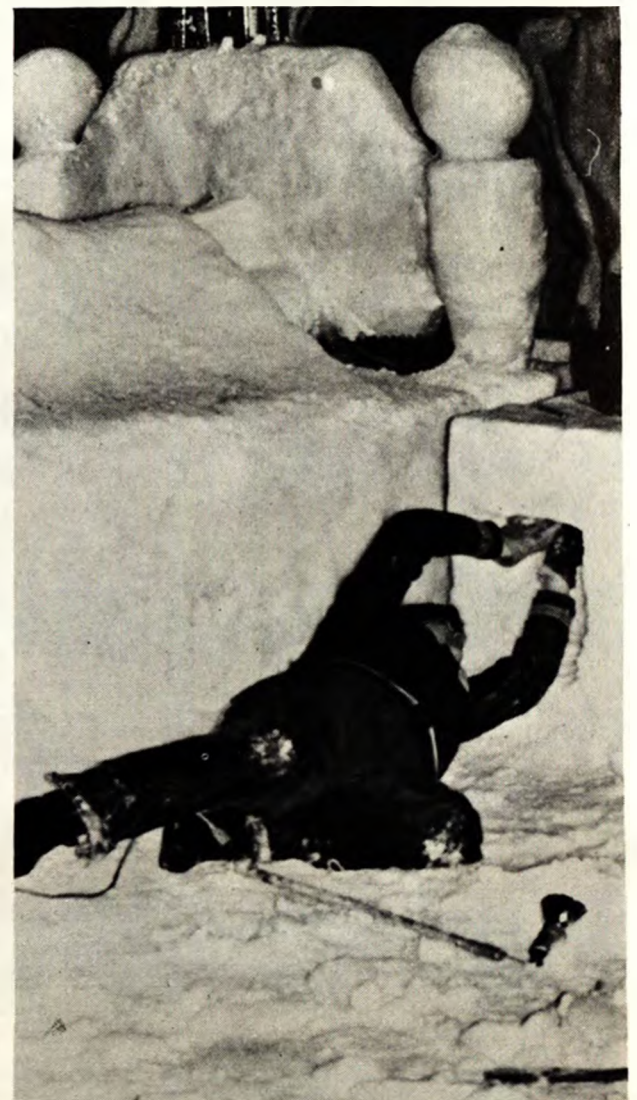
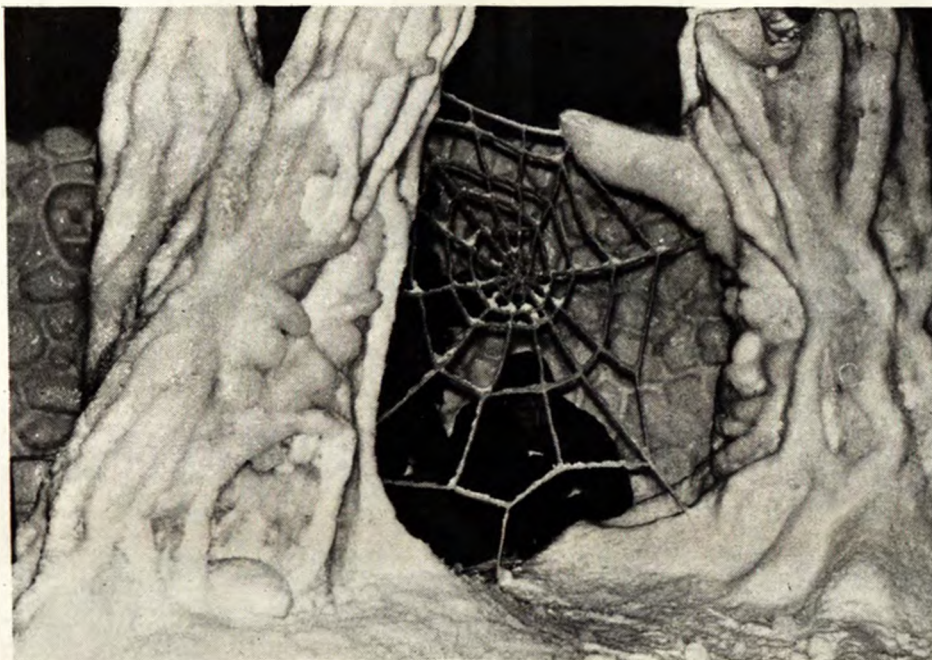


Delta Sigma Phi



2nd Place Class A *Sigma Tau Gamma*

"Welcome To My Nightmare"



3rd & 4th Place Class A



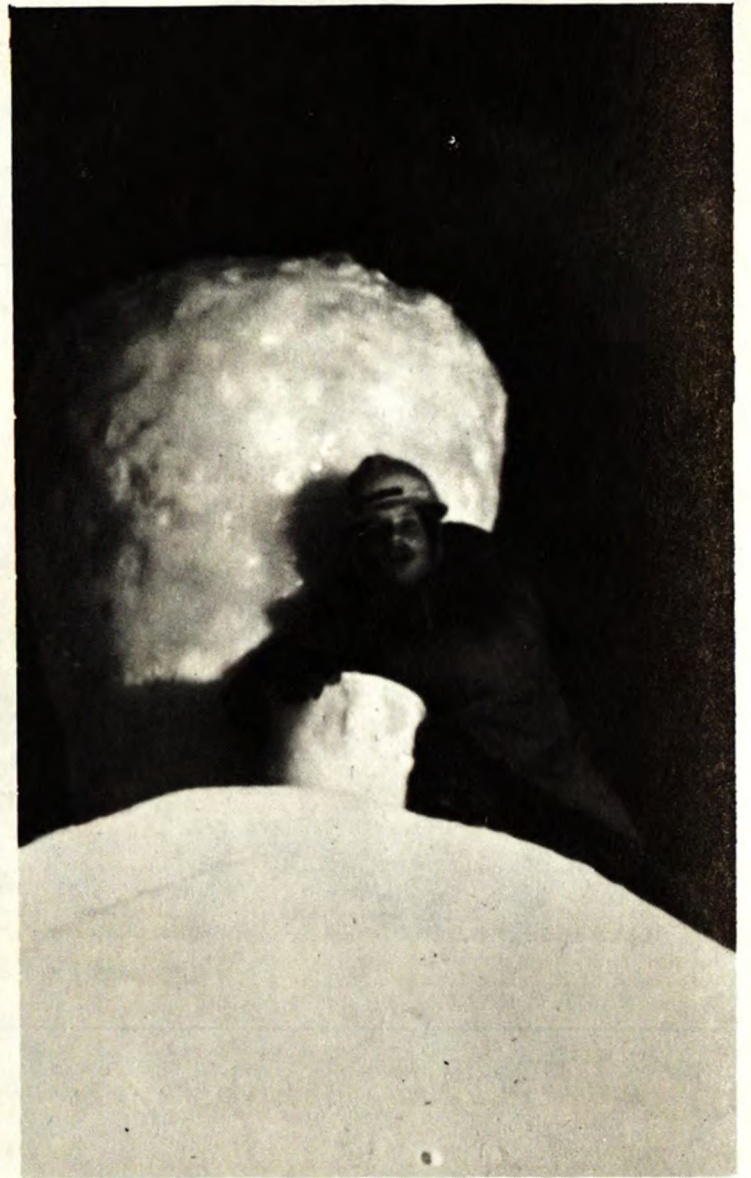
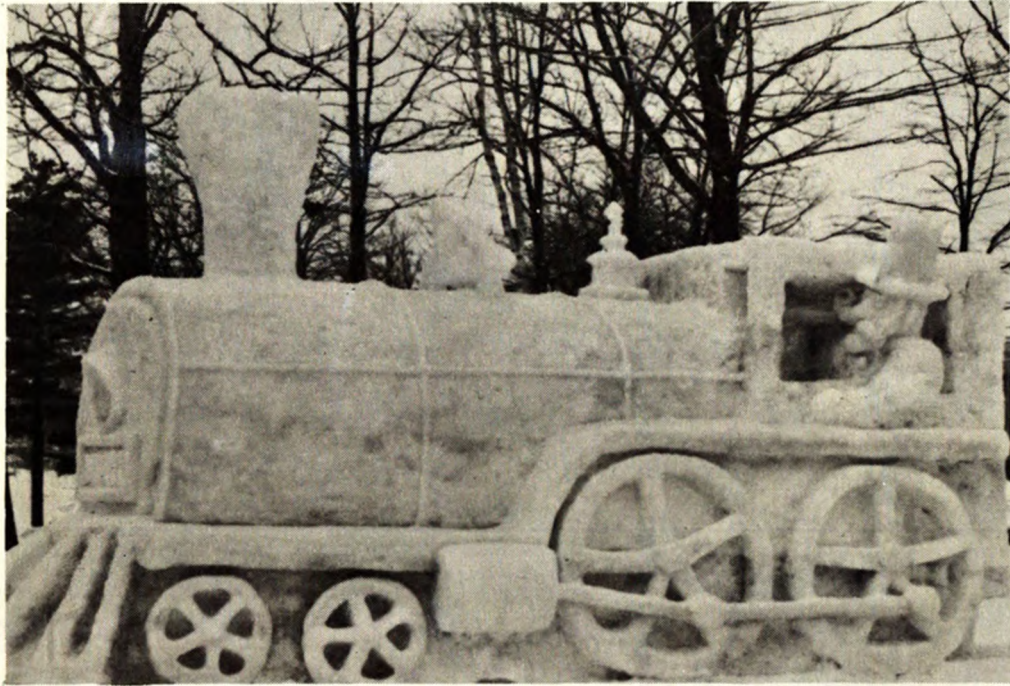
Douglas Houghton Hall *"Tales by Edgar Allen Snoe"*



Tau Kappa Epsilon *"Von't You Step Into My 'Polar'"*

1st Place Class B

Mama's Boys



"Take This Snidley You Cold Blooded Chiller"



Nature's Winter Carnival



J. Kirkinh



C. Eshbach





J. Kirkish



J. Kirkish



J. Kirkish



1st Place Class C & Class D

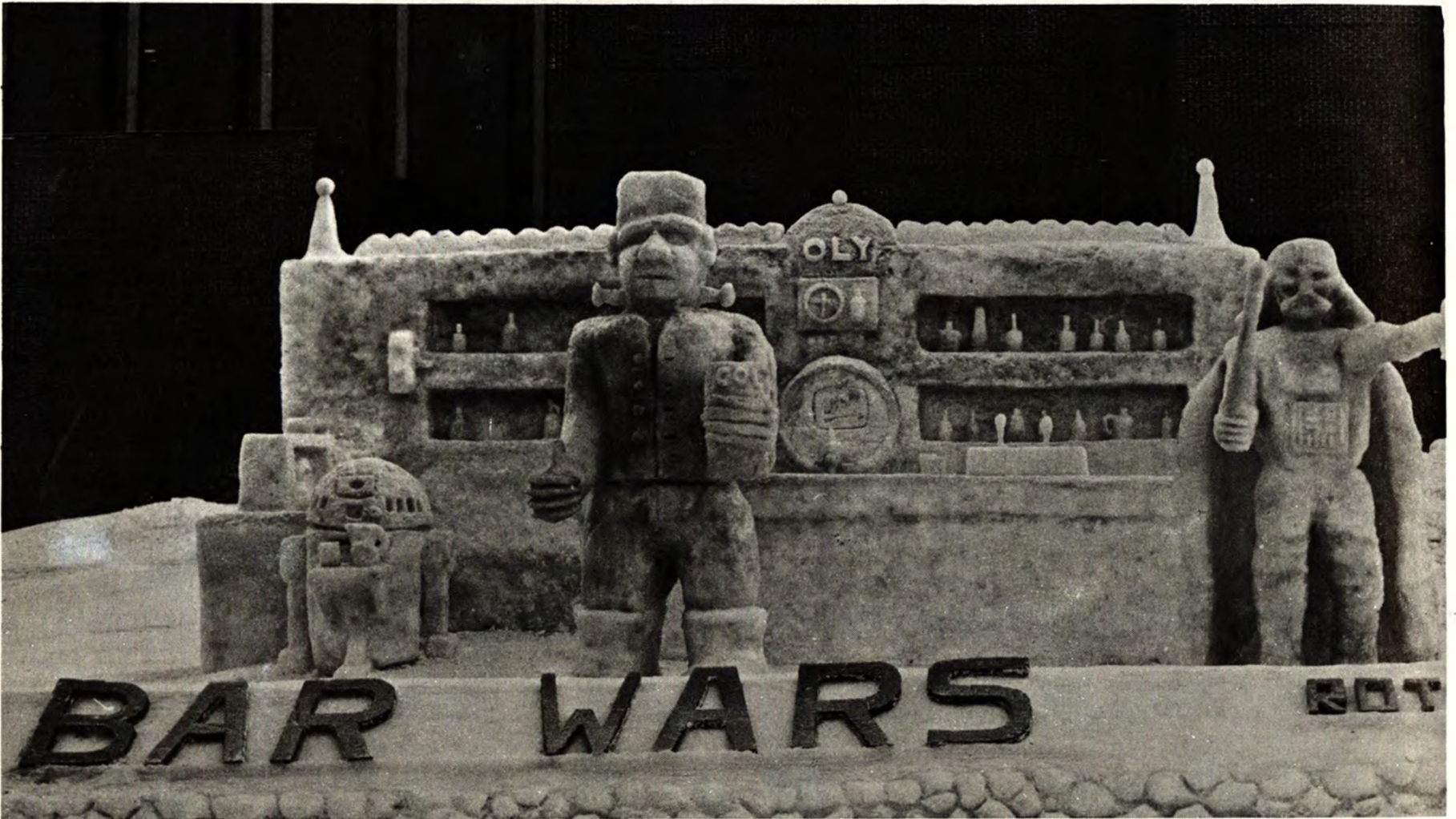


Crosstone "Is it Chilly Yet"

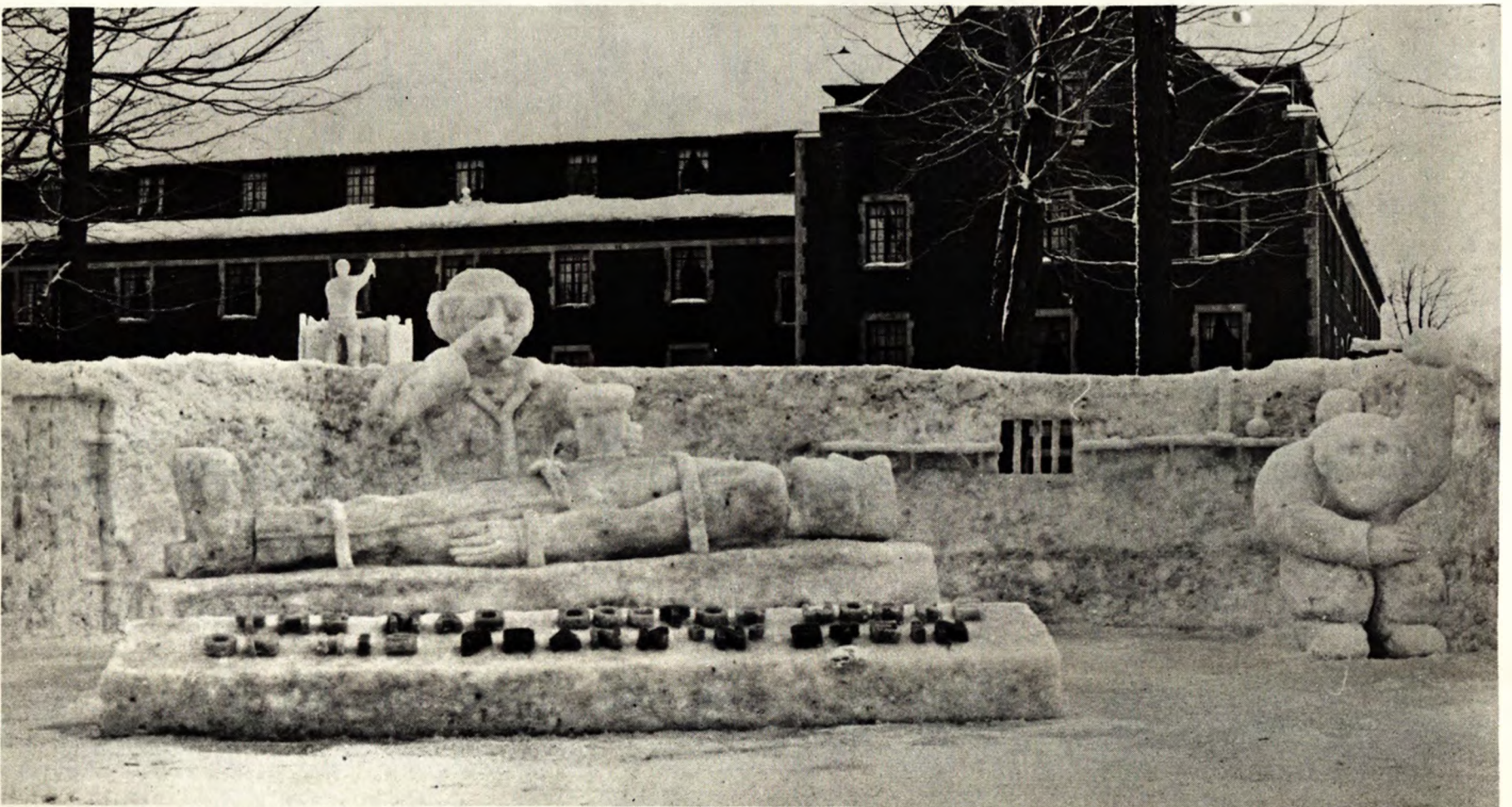


St. Al's "Of Course We'll Win"

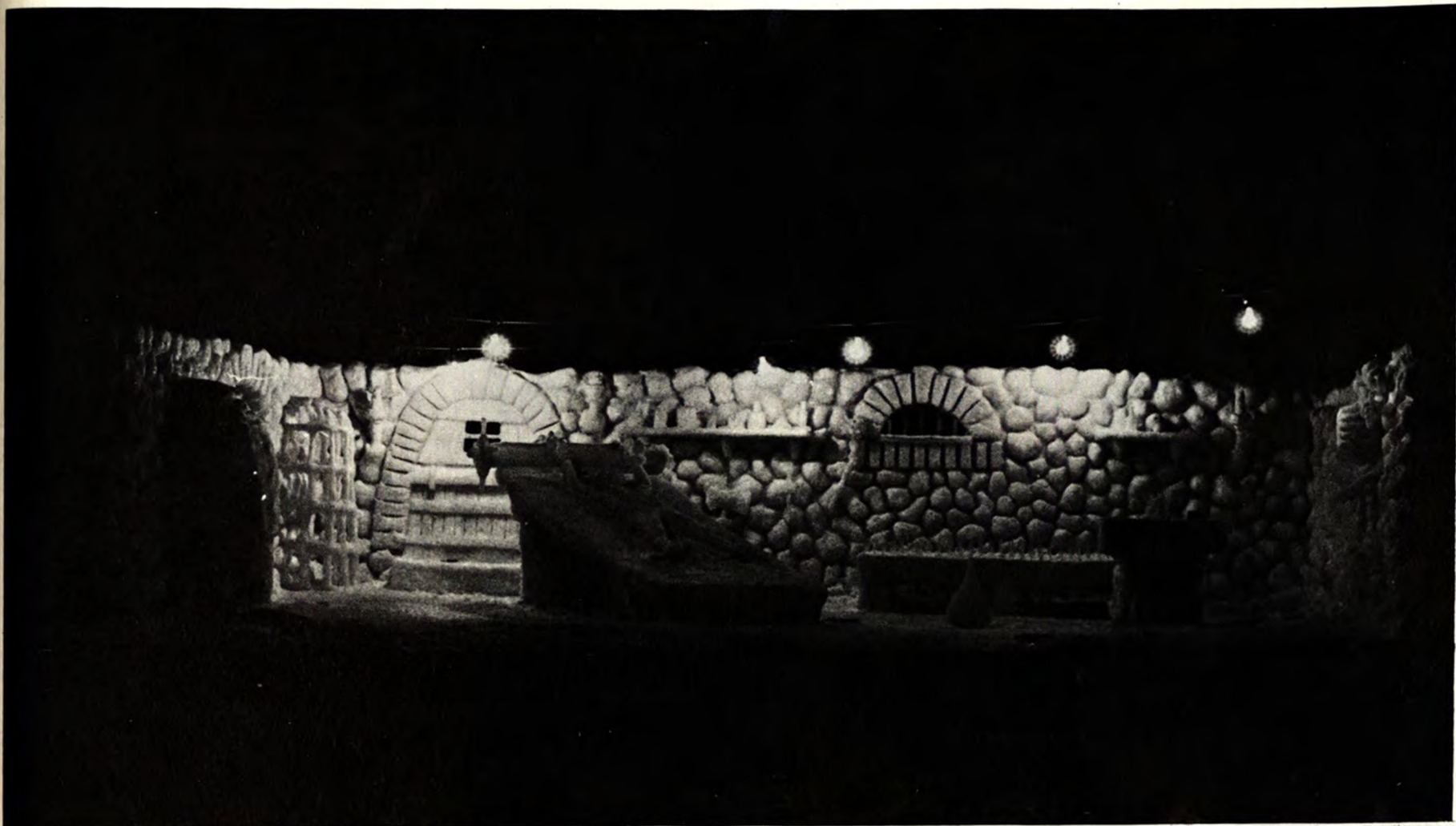
2nd & 3rd Place Class B



ROTC "Bar Wars"



2nd Floor ECH "The Mad Doctor Works on his Frank 'n' Stein"



KYBO "What Did You Say Your Hobby Was"

2nd & 3rd Place Class C



APO "It's Too Cold For Anything Exciting To Happen Here"



Delta Zeta "Frank-n-stein"

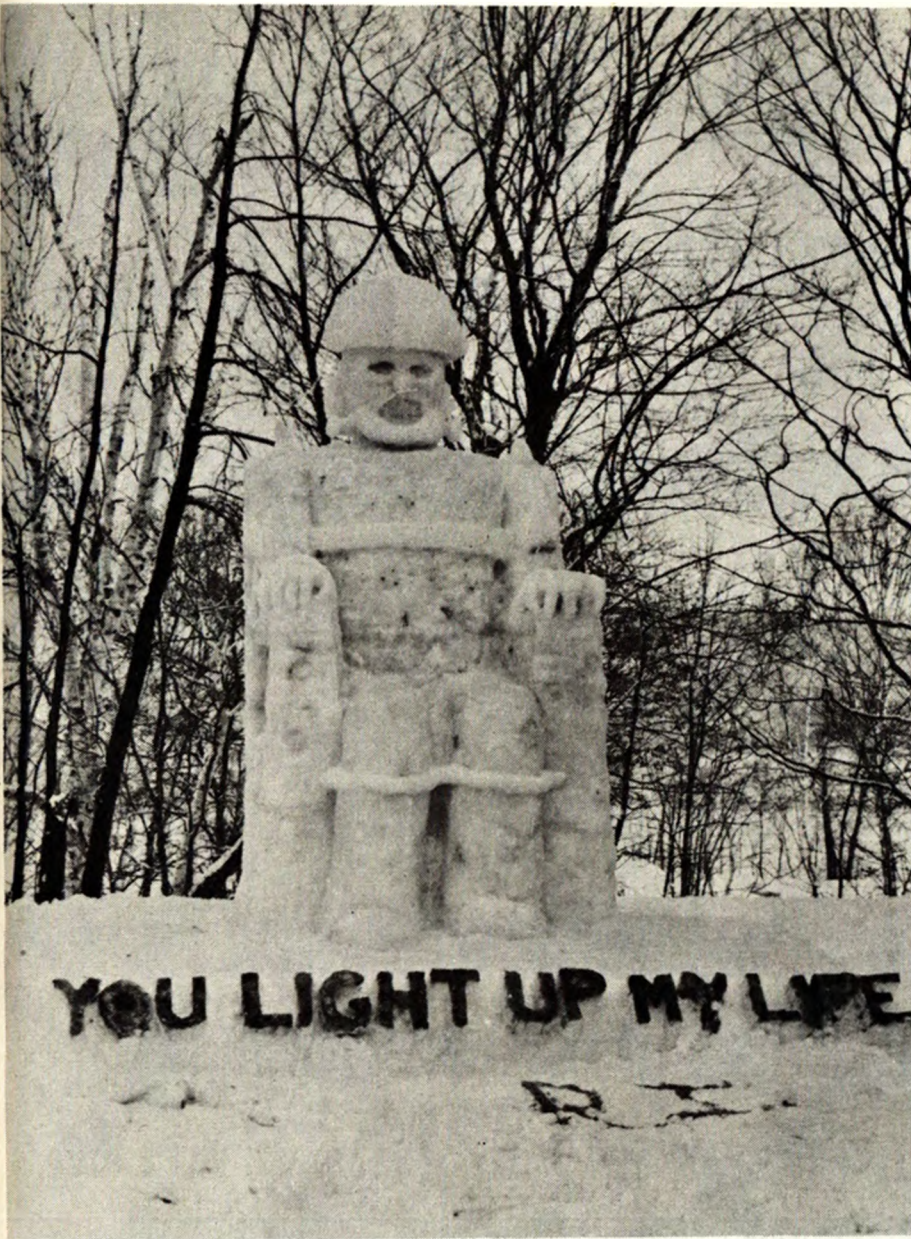
2nd & 3rd Place Class D



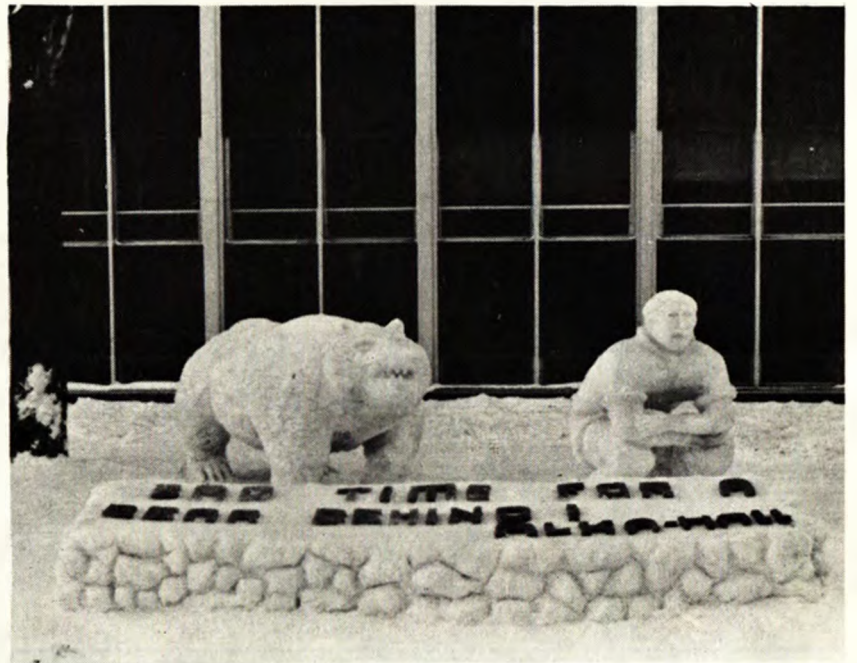
Theta Chi Epsilon "Where's My Mummy"

Sammy Awards

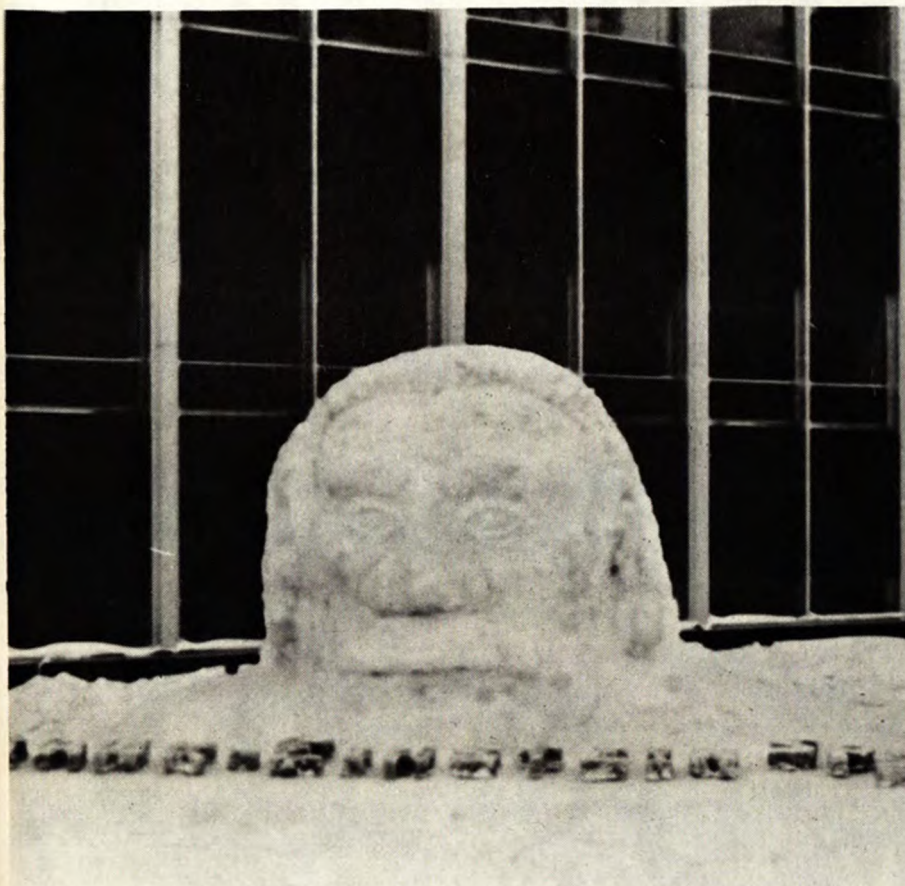
One Nighter Statues



1st Place: Rammit Inn "You Light Up My Life"



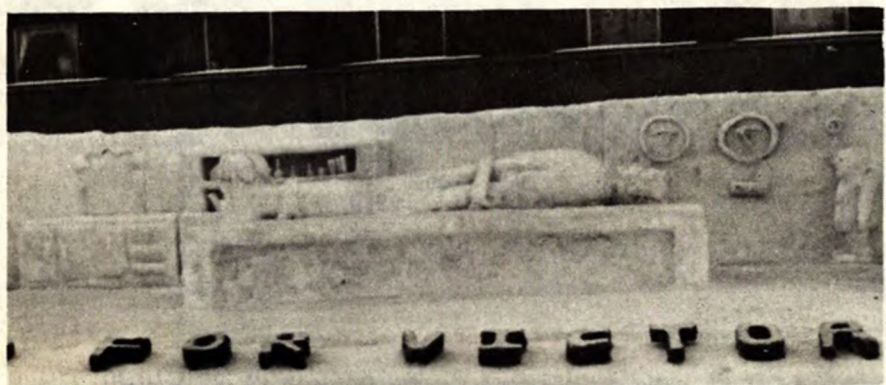
Alka-Hall "Bad Time For A Bear Behind"



Society Physics Students "Frank-Einstein"

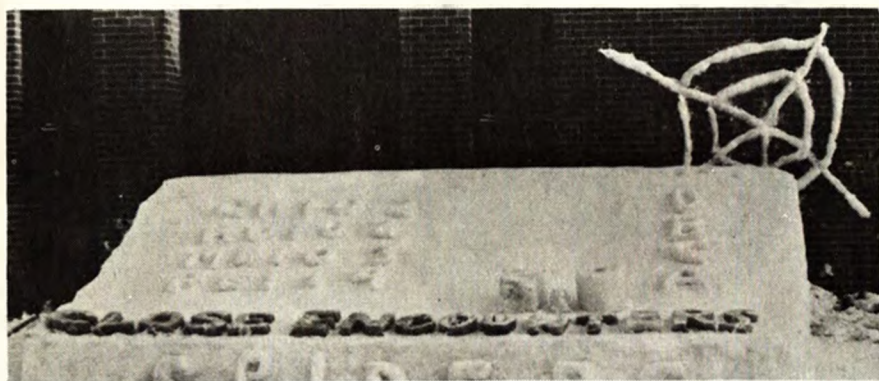


DHH Lounge Rats "Lounge Rats Can Be Cured"



(Top to bottom), Phi Kappa Tau, Top of the Wad, Sigma Rho, Sigma Phi Epsilon, and Sleepy Hollow.

(Top to bottom), Theta Tau, Phi Kappa Theta, MTU Forestry Club, Beta Sigma Epsilon, and Sno House.



(Top to bottom), Focus Inn, Beta Mu Phi, Pi Cosine Theta, Spiders, and A.C.S.

(Top to bottom), Miners, WNTR, Oasis, Fyjimo, and Artic Attic.

(Left and Bottom) Delta Zeta Sorority in "Mr. Keebler Loses His Cookies" (Right) DHH presents "We do it All For You"



Stagefright, Laughs, Applause





(Top) Mama's Boys present a skit entitled "The Living Room" (Above and Left) Delta Sigma Phi in "These Boots are made for Walking"

(Right and Below) Broadway performs a skit entitled "Silence is Ghoul'den" (Bottom) Sigma Phi Epsilon in "Guess Who's Coming to Dinner"



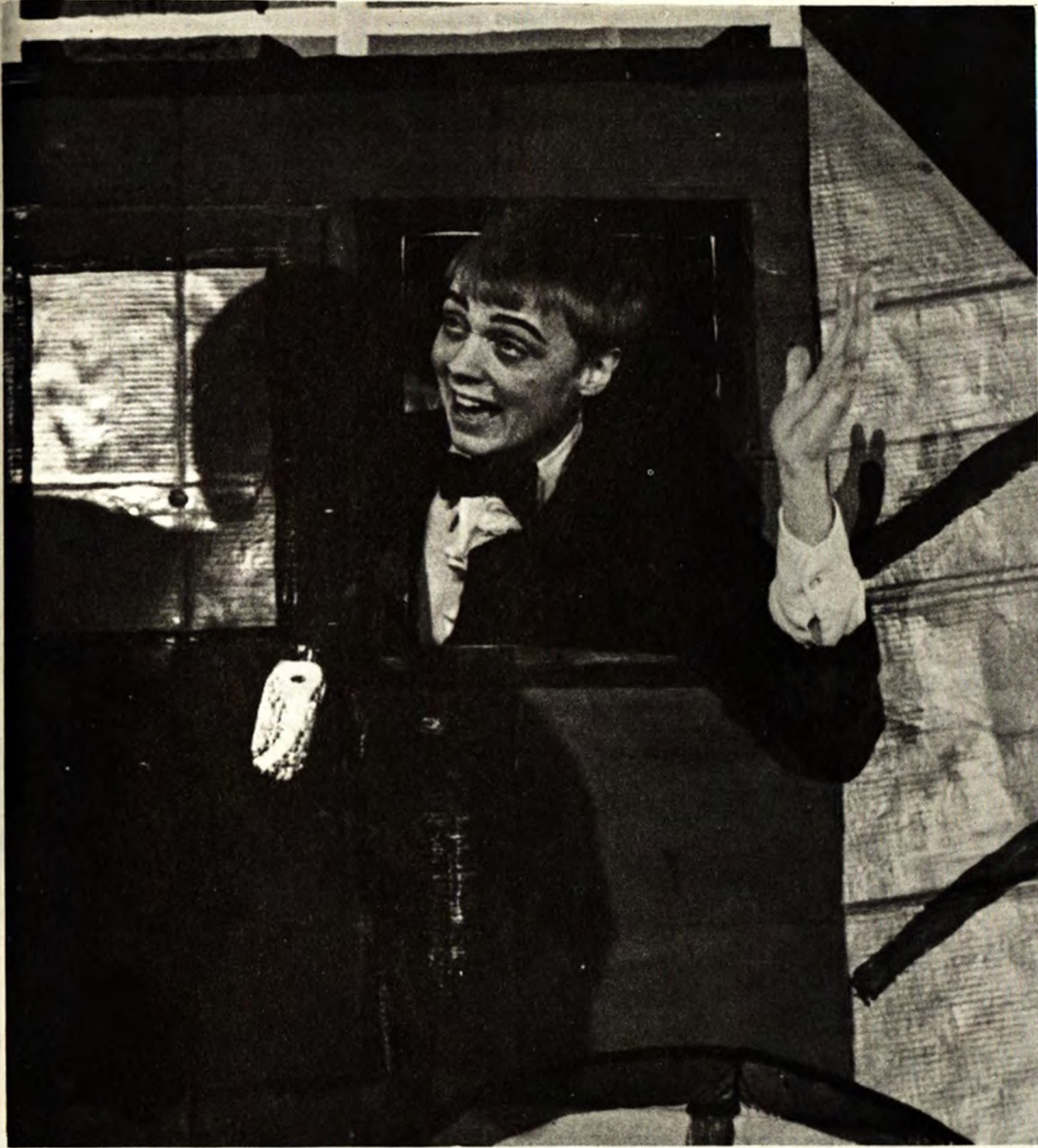


(Top and Above) Forestry Club in "Snow Job" (Left) Sigma Phi Epsilon in "Guess Who's Coming to Dinner?"

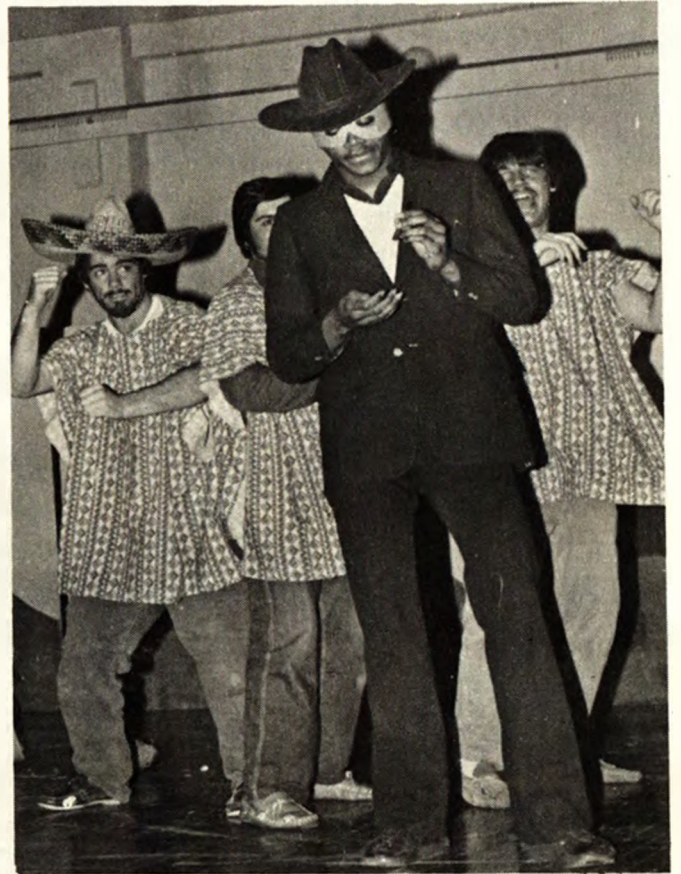


(Right and below) Sigma Tau Gamma in "The Heavyweight Nurd Championship of the World"
(Bottom Right) Alberta in "No, Not Alberta Canada"





(Left and Below) Phi Kappa Tau in "A Bridge too Fair" (Bottom Right) Alberta in "No, not Alberta Canada"



Schedule of Events

MONDAY, JANUARY 30, 1978

Queen Talent Show
and Coronation Hancock High Aud. . . 7:30 p.m.

TUESDAY, JANUARY 31, 1978

Stage Revue Hancock High Aud. . . 7:30 p.m.

THURSDAY, FEBRUARY 2, 1978

Snow Statue Judging 9:00 a.m.
Judging of One-nighters 9:00 a.m.
Broomball Event Dee Stadium 10:00 a.m.
Skiing Event Mt. Ripley 10:00 a.m.
Stage Revue (Snow Statue
Winners Announced) Hancock High Aud. . . 7:30 p.m.

FRIDAY, FEBRUARY 3, 1978

Broomball Event Dee Stadium 8:00 a.m.
Skating Event Dee Stadium 12:00 noon
Hockey Student Ice Arena . . 7:00 p.m.

SATURDAY, FEBRUARY 4, 1977

Snowshoeing Event Engineers Field 8:00 a.m.
Dog Sled Event Cliff Drive 11:00 a.m.
Hockey Student Ice Arena . . 1:30 p.m.
Sno-Ball Memorial Union . . . 9:00 p.m.
Awards Presentation Memorial Union . . 10:00 p.m.

UPPER PENINSULA POWER COMPANY



DE MOTTS APARTMENTS

★ **HEATED**

★ **FULLY FURNISHED**

★ **FULLY CARPETED**

★ **HOT & COLD WATER**

★ **PAVED PARKING**

Calumet Houghton Hancock

CENTURY SOUND AND APPLIANCE

Sony And G.E. TV's

Color 10"-25" Black And White 5" - 19"

Stereo Entertainment Center By

Sony And Sanyo

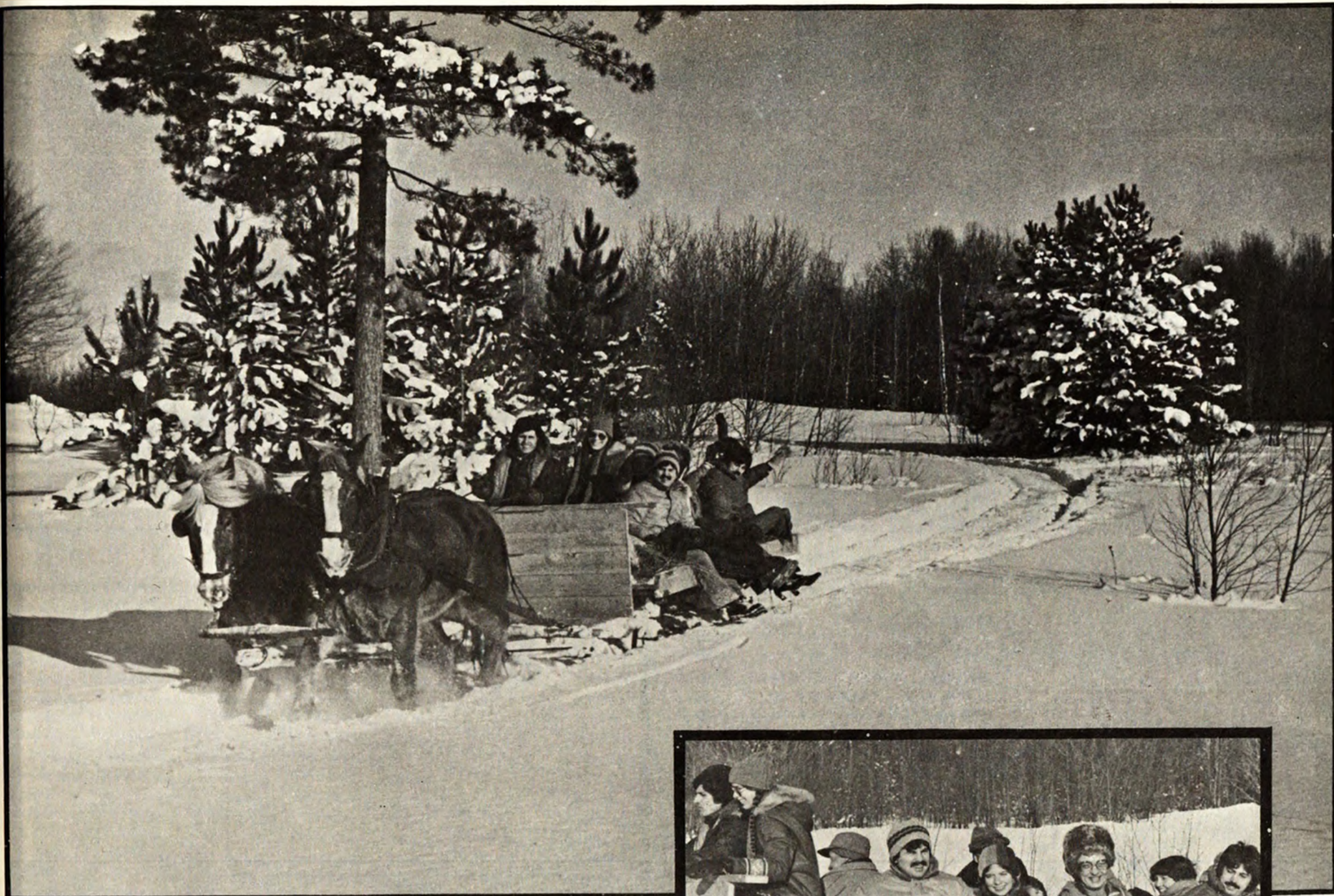
Cassette Corders ★ Radios

Tape Decks ★ Component Parts

Mesa Speakers

Calumet, Michigan

337-0777



A bank is a friend

- ☐ *who will loan you money*
- ☐ *who you can trust with your savings*
- ☐ *who has checking accounts tailored to your needs*
- ☐ *who will give you sound financial advice*
- ☐ *ALL of the ABOVE*

"Your financial friends at Houghton National Bank wish you the best Winter Carnival ever!"

HOUGHTON NATIONAL BANK



DOWNTOWN

UNIVERSITY

CHASSELL

FDIC



The Library

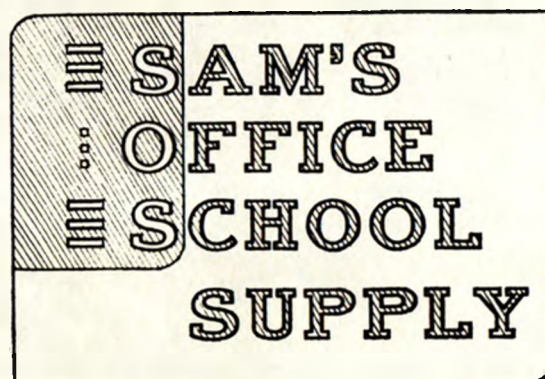
Come in
out of the cold into the WARM...
Eat, drink & be merry!

62 N. ISLE ROYALE ST. 482-6211

1978 Winter Carnival Booster Club

JIM'S FOODMART
LIBRARY BAR
KING'S INN
BUD'S BIG SAVER
COMMERCIAL SYSTEMS
DOUGLASS HOUSE HOTEL
ED HASS & COMPANY
PORTAGE MOTEL
KALEVA CAFE
JOFFEE'S MEN'S STORE
I.E. SWIFT COMPANY
ROY'S PHARMACY
AL'S HALFWAY BAR
HANCOCK RED OWL
GOODMAN TRAVEL AGENCY
QUICK STOP
KUKKONEN'S GIFT SHOP
TOGO'S
DOWNTOWNER LOUNGE
SEARS
GIL-MARE GIFT SHOPPE
GILLE'S MUSIC
CHIPPEWA MOTEL

Blue Key sincerely thanks these area businesses for their
generosity in helping make our Winter Carnival a success



SOUVENIRS OF THE COPPER COUNTRY.
BOOKS ON THE AREA, INCLUDING HISTORY
OF THE C.C. AND CALUMET COPPER & PEOPLE.

209 QUINCY ST.

HANCOCK



Choose from a world
of exquisite diamonds
in our Keepsake Gallery

RAY LAITI HANCOCK

Keepsake®
Registered Diamond Rings



Elias
BROTHERS

BIG BOY Family Restaurant

515 Shelden Ave., Houghton
482-8400

OPEN 24 HOURS ALL-YEAR ROUND



Commercial Systems, Inc.

414 Shelden Ave.
Houghton, Michigan

BILL & BARBARA BRIGGS - OWNERS

1957 MTU GRAD

(906) 482-3990

*Overlooking The Famous
Portage Lake Lift Bridge*

Your Hosts

BOB & PAT LONG

906-482-4421

The

DOWNTOWNER MOTEL

DOWNTOWN HOUGHTON

110 Sheldon Ave. (US 41)

Houghton, Michigan 49931

Direct Dial Phones

Electric Heat

Air Conditioned

Sauna

TV Cable Color

A New, Fun Place To Eat !

Wine by Liter - Beer by
the Pitcher - Cocktails



*In Gay 90's Atmosphere
On Real Checkered Linen*

*Meals Served From "Budget
Breakfast" Through Late Evening*

Giving the Copper Country the Best in Fine Foods

THE DOUGLAS HOUSE

7-10 Monday thru Thursday
7-12:30 Friday & Saturday
7-9 Sunday

THE ONIGAMING SUPPER CLUB

May thru October



SWIFT HARDWARE

When you want . . . —real friendly service

—a real big selection —the lowest prices in town

314 SHELDEN AVE.

HOUGHTON, MICHIGAN



JIM'S FOODMART

*SPECIALIZING IN
FINE FOODS
AND
BEVERAGES*



**Helping with
financial
security and
home ownership
since 1889.**

35 offices throughout Michigan. Over \$500 million strong.



**DETROIT &
NORTHERN
SAVINGS**

400 Quincy

Hancock, Michigan 49930

MEMBER F.S.L.I.C.



HOUGHTON BOTTLING CO., INC.

**13 N. Bridge St.
Houghton, Michigan**

(906) 482-0161



Herman Gundlach, Inc.

The General Contractor

Building Construction

Copper Country Concrete Corp

Gundlach Ready Mixed Concrete

58 N. Huron St.
Houghton, Michigan



The first Huskie goal in the Student Ice Arena was scored by John Gaschuk against the University of Minnesota Duluth.



**Best
Western**

The King's Inn

"Lodging at its Best"

David Mickelsen
Innkeeper

DOWNTOWN
HOUGHTON, MICHIGAN

(906) 482-5000

MADE WITH REAL

(Squirtfruit)
GRAPEFRUIT

**RIPENED ON
THE TREE**



COCA - COLA

BOTTLING COMPANY

maxell
**THE CHOICE
IS YOURS**



**Your audio specialist knows.
Ask him.**

FISHER SOUND

"Finest in Stereo Equipment"

40 Dodge Street
Houghton

**E. R.
Lauren
Book Store**



**Memorial
Union**

Congratulations to the Queen Candidates



**NEW CHEVROLETS
AND OLDSMOBILES**

**CHEVY TRUCKS
and BLAZERS**

Meyers



***"Copper Country's Complete Center
For all of your Automotive Needs."***

110 E. Quincy St. Hancock

482-5650

**QUALITY
INSPECTED
USED CARS**

**GM QUALITY
PARTS DEPARTMENT**

EXCLUSIVE!!

**The spring edition of the
COPPER COUNTRY ANTHEM
will feature a photo essay on
Winter Carnival '78.**

**Why not take out a subscription now
and have a great remembrance
as well as a year's worth of good reading
and good pictures.**

**Copper
Country
ANTHEM**

1 Year

Spring-Summer-Fall-Winter

only

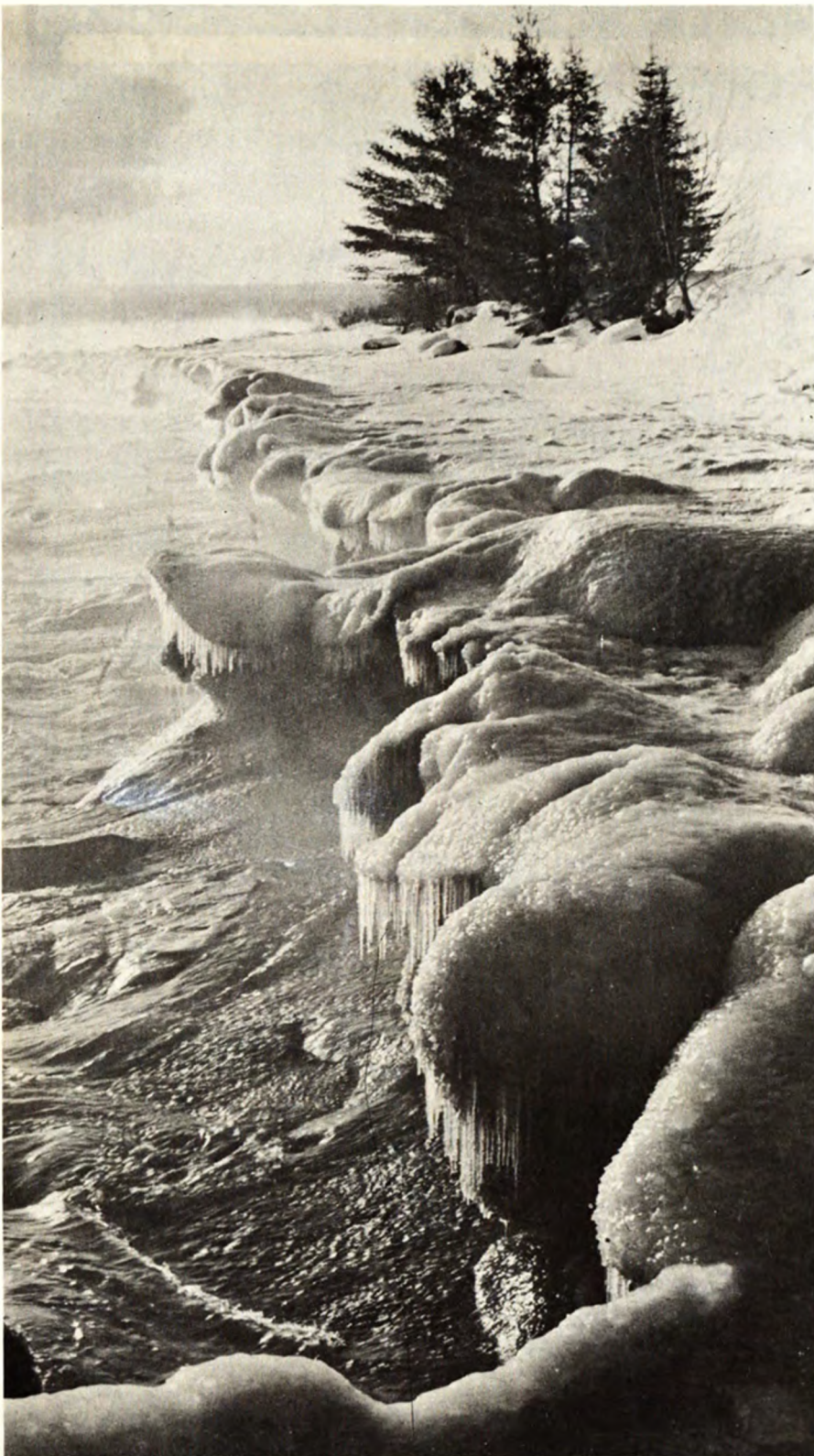
\$6.00

For gift subscriptions, an appropriate card
will be sent in your name.

Call or write

Copper Country Anthem

Box 330 • Hancock, Michigan 49930
(906) 482-1250



STORYS

books - hobbies

520 SHELDON AVE.,
HOUGHTON, MICH. 49931

DANIEL W. STORY

TEL. (906) 482 - 7304



TOGO'S SUBMARINE SANDWICHES

OPEN UNTIL

2:00 a.m.

482-4822

Friday and Saturday

482-4821

***You're
Something
Special...***

***Eat
With
Us***

Wishing everyone
the best of luck during
Winter Carnival 1978'

Quik Stop

Shelden Houghton

KIRKISH



FURNITURE

KING KOIL BEDDING

HITACHI STEREOS

SPEED QUEEN WASHERS AND DRYERS

Copper Country's Largest

Home Furniture Center

HOUGHTON

Yalmer Mattila Contracting, Inc.

General Contractors
for the new
Electrical Energy Resources Center



Cohodas-Paoli Co. Inc.



wholesale
Fruits-Vegetables
Groceries

Institutional and Frozen Foods

Houghton — Ironwood

Follow Tech's campus activities all year
Subscribe to the

**michigan
tech** **LODE**

\$5.00 per year

suite 122 memorial union, houghton, michigan 49931

VERTIN'S DEPARTMENT STORES

- in -
Upper Michigan

HOUGHTON-CALUMET
NORWAY - IRONWOOD

**Upper Michigan's Favorite
Since 1915**



"The King of Meats"

**Hancock
Marquette**

**Iron Mountain
Sault Ste. Marie**

WMPL PEOPLE POWER

The Voice of Michigan Tech Athletics



Enough thanks cannot be given to the people at the Book Concern for their cooperation and to Charlie Eshbach and Joe Kirkish for both their color pictures and ideas. It is our staff's hope that the Pictorial will bring back many fond memories of Winter Carnival 1978.

PICTORIAL STAFF

Editor-in-Chief
Photo Editor
Business Manager
Layout Staff

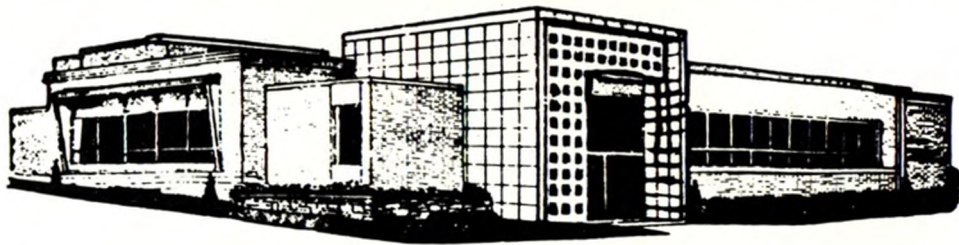
Writer
Photographers

**Arnie Herberg
Scott Davis
Tom Schomann
Ralph Herberg
Colleen Kobe
Roy St. Laurent
Jeff Boyce
Peter Beaufort
Phillip Borgenson
Ellen Davis
Scott Davis
Charlie Eshbach
Arnie Herberg
Joe Kirkish
Dennis Pasik
Martt Songer
The Book Concern**

Printers

Front Cover Photograph **Joe Kirkish**
Back Cover Photograph **Charlie Eshbach**

The Superior National BANK AND TRUST COMPANY



It was a great pleasure serving you the past year.



**HANCOCK
HUBBELL - BARAGA**

—
FREE PARKING
—
DRIVE-IN BANKING

BANKING HOURS:

**Monday thru Thursday
9:30 to 3:00**

**Friday 9:30 to 3:00
and 5:00 to 8:00**

**Friday Drive-In Window
9:30 to 8:00**

**"The Bank Of
Superior Service"**





7182-73
OK