

D
47
63
1
CH

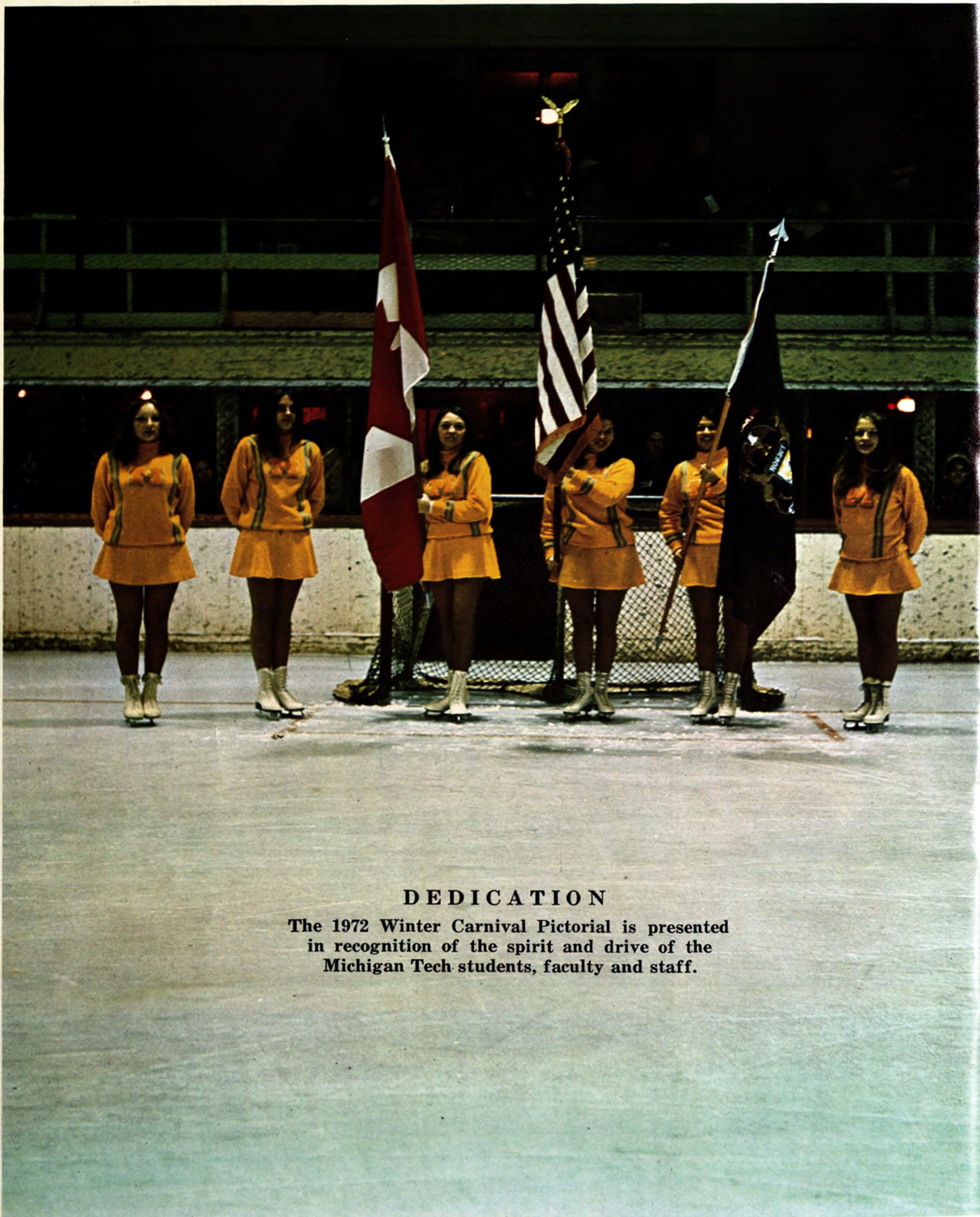
Michigan Tech Lode
PICTORIAL

FEBRUARY, 1972

NINTH ANNUAL



1972 WINTER CARNIVAL



DEDICATION

The 1972 Winter Carnival Pictorial is presented
in recognition of the spirit and drive of the
Michigan Tech students, faculty and staff.

1972 Winter Carnival

Organization

Statue
Skits
Skating
Skiing
Snowshoe
Dogsled
Broomball
Queen
Beard
Total
Overall

Class A

Alpha Kappa Psi												
Beta Sigma Psi		15									15	
Delta Sigma Phi	25	25	1	7	7	2					67	1st
Kappa Delta Psi			2				7				9	
Phi Kappa Theta		10					2	2			14	
Phi Kappa Tau	15	5				7					27	
Sigma Phi Epsilon	20			5	5	1			2		33	
Sigma Rho		20	5	3	2 1/2	3	3				36 1/2	3rd
Tau Kappa Epsilon	10		3	2	2 1/2	5	5				27 1/2	
Theta Tau	35		7	1	1				1		45	2nd

Class B

A. F. - R. O. T. C.												
A. S. C. E.												
Coed Hall			3			4					7	
Douglass Houghton Hall	5		5	4	2						16	
Foresters		15			3	3					21	3rd
Gazers												
KLF-ZHO-OCH				5			5				10	
KYBO - Good Intentions - House of Lords							3				3	
M. T. U. - Vets		10		2			2		1		15	
St. Albert the Great	20	20	2		5	2					49	2nd
TKD—2nd East	30		4	3	4	5	4				50	1st
Tombstone	10										10	

Class C

Alka Hall & Alumni					5	5					10	
Army - R. O. T. C.				5	3						8	
Bamf												
Knight House and Eden House	30		5	3	4		4				46	1st
Never Inn—Ice-olation			3	4							7	
Oread's Paradise							5				5	
Phi Lambda Beta		20									20	2nd
Stagger Inn	10					4					14	
Subterranea												
Tech Wives		15									15	3rd
Theta Chi Epsilon	20										20	2nd
Unwindsables			4			3	3				10	

MICHIGAN TECHNOLOGICAL UNIVERSITY'S

11RDADV

WINTER CARNIVAL

"Snobody's Perfect"

Michigan Tech Lode PICTORIAL

*Edited and produced by the staff of the
Michigan Tech Forester*

EDITOR-IN-CHIEF

Walter Summers Senior Forestry

PHOTO EDITOR

Thomas Duvendack Senior Forestry

PHOTOGRAPHERS

David Engelman Sophomore Forestry
Max Geiger Freshman Forestry
Carl Handke Freshman Forestry
Wayne Methner Freshman Forestry
Patrick Owen Freshman Forestry
Gerald Ryszka Freshman Forestry

PRODUCTION

Carol Buzzard Sophomore Forestry
Christina Kionka Senior Forestry
Verna Trippel Sophomore Forestry

BUSINESS MANAGER

David Mastny Senior Metallurgical Engineering

IDEM

Amid the icy furies which hail winter in Michigan's Copper Country, there annually arises a latent bit of desire among the student organizations of Michigan Tech. Energies and spirits are directed for weeks on end in a struggle to create from the vast blanket of whiteness a pocket of fleeting splendor on their campus. Magically huge mounds of snow are transformed into momentary works of art and the spirit of competition pervades the very atmosphere.

1972 is mentored by the theme "Snobody's Perfect". A phrase which becomes all the more evident as the final hours of agony and delight wane on and this truth is brought home.

We salute those whose time and effort have gone into the creation of this year's Winter Carnival and, in behalf of our university community, say thanks.

CREDITS

Color Photos

C. Richard Crowther
Christina Kionka
Jim Look
Walter Summers

Art Work

Lauri Leskinen

Misc. Photos

Charles Eshbach

Second class mailing from Hancock, Michigan 49930.
© Copyright, Michigan Tech Lode, 1972. All rights reserved.



1st, 1971

Buzz Off Snidley—Delta Sigma Phi



1st, 1970

Crack, Snapple, Plop—Delta Sigma Phi



1st, 1969

Da Gall of Dat Guy—Theta Tau

**Houghton National Bank
extends**

**Congratulations
to Blue Key
for another fine
WINTER CARNIVAL**

**HOUGHTON
NATIONAL BANK**

**Serving the Copper Country
Since 1865**

**Downtown Office
600 Sheldon Ave.
Phone 482-5500**

**University Office
1303 College Ave.
Phone 482-7100**



Blue Key National Honor Fraternity

Michigan Tech's Winter Carnival is an event anxiously looked forward to each year by nearly all of the residents of Michigan's Copper Country. Without the superb guidance of the local chapter of Blue Key National Honor Fraternity it is very likely that the event would never occur. The prior planning which goes into the organization of such an affair is so great that it is topped only by the efforts needed in the final staging. To the members of Blue Key we offer congratulations on a job well done and say thanks.



Blue Key officers: John Waldron—Treasurer, Jim Blevins—Vice President, Mike Audit—President, Dan Shamblin—Secretary.



Bruce Trusock—National Publicity Chairman, Dean Meese—Advisor, and Mike Audit packing snowballs to be sent to Southwest Texas State University.

Among the many events which occur during the annual Winter Carnival week is the packing of 500 of the Copper Country's finest snowballs in dry ice. This frigid package is then air-lifted to Southwest Texas State University where the shirt-sleeved student body joyfully forms sides and leans into an honest snowball fight. If given a chance the Michigan Tech students would probably carry the snow, one handful at a time, to Texas for only the opportunity of seeing the warm sun.



The scene in Texas after receiving a Winter Carnival shipment of Michigan Tech's abundant snow.

1972 Winter Carnival Judges

Traveling to Michigan Tech this year to act as judges for the 1972 Winter Carnival are . . .

Mr. Raymond Clarke, Owens-Illinois Company
Toledo, Ohio

Mr. James Hogg, Scott Paper Company
Philadelphia, Pennsylvania

Mr. Rod Maybee, Shell Oil Company
Houston, Texas



Congratulations on a fine Winter Carnival

from

CENTRAL

Super Market

Downtown Houghton

Open Evenings and Sundays — Tel. 482-1040



Hamar Quandt Company

Houghton — Laurium



Stern & Field

Hancock

What kind of man shops at Stern & Field?



MICHIGAN TECHNOLOGICAL UNIVERSITY'S

Dogsledding



1972 Winter Carnival Special Events

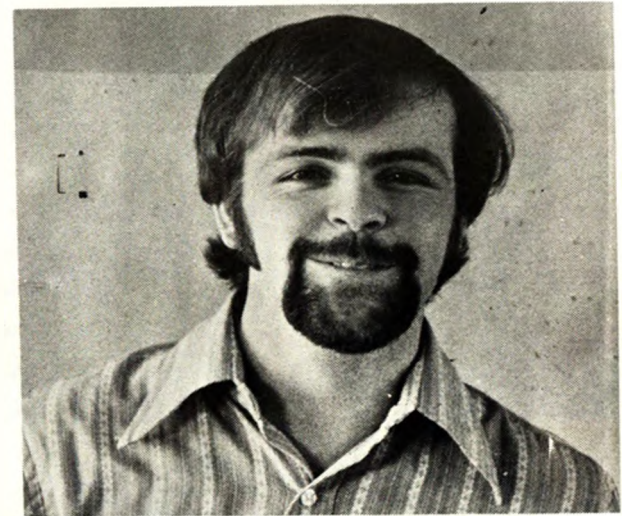
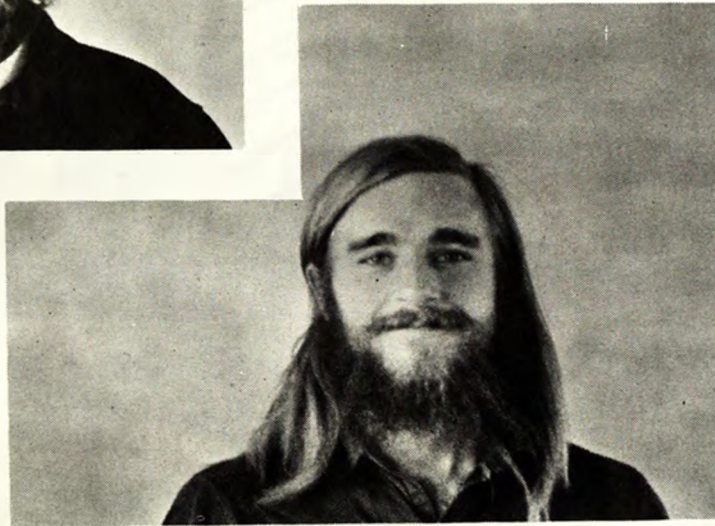


Skating

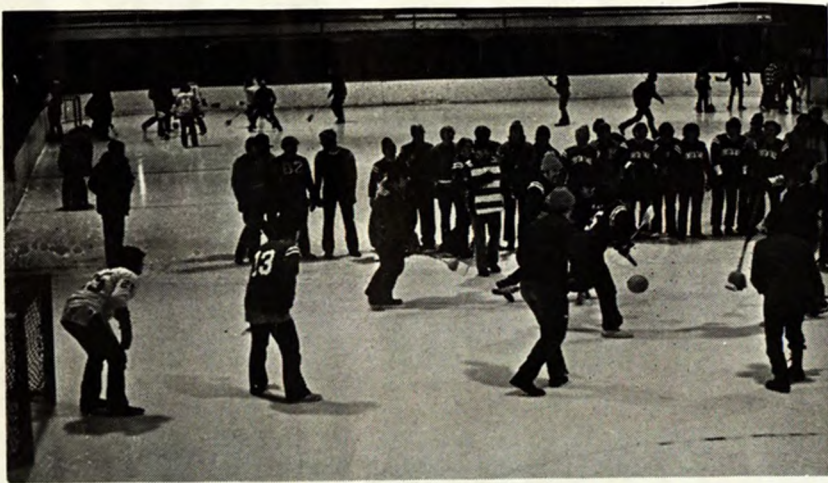


Special Events

Beards



Broomball





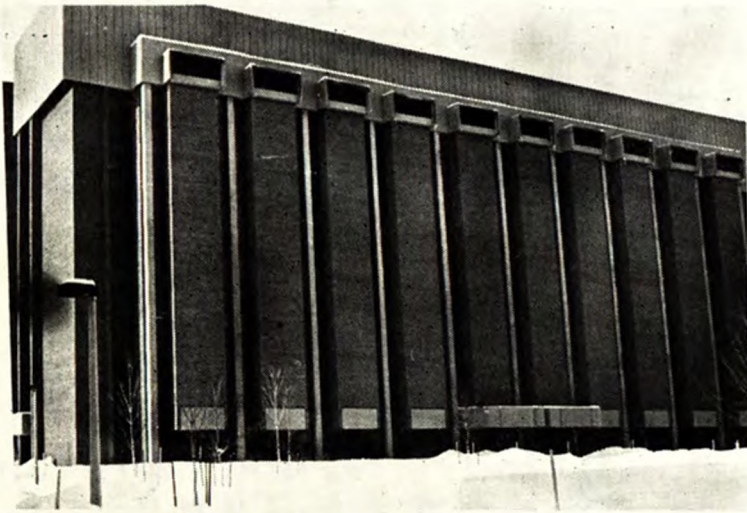
Snowshoeing



Skiing



The Michigan Tech Campus





Hearts—he not called—it is—
—Emily Dickinson

1972 QUEEN CANDIDATES



Cindy Shoon

Cindy Sutton

Debbie Julien

Mary Sundell

Chris Haapala

Kathleen DePrekel

Sharon Hughes

Mary Fascinelli

Judy Johnson

Suzi Kohler

1972 WINTER CARNIVAL QUEEN

Kathleen DePrekel



The Queen Candidates



Kathleen DePrekel
PHI KAPPA THETA



Judy Johnson
KAPPA DELTA PSI



Sharon Hughes
ALPHA KAPPA PSI



Cynthia Sutton
THETA TAU



Mary Sundell
TAU KAPPA EPSILON



Mary Fascinelli
BETA SIGMA PSI



Chris Haapala
DELTA SIGMA PSI



Debbie Julien
SIGMA PHI EPSILON



Cynthia Shoop
PHI KAPPA TAU



Suzi Kohler
SIGMA RHO

1972

Winter Carnival Queen

The Queen Candidate's Talent Show



CONGRATULATIONS

and a tip of the hat to

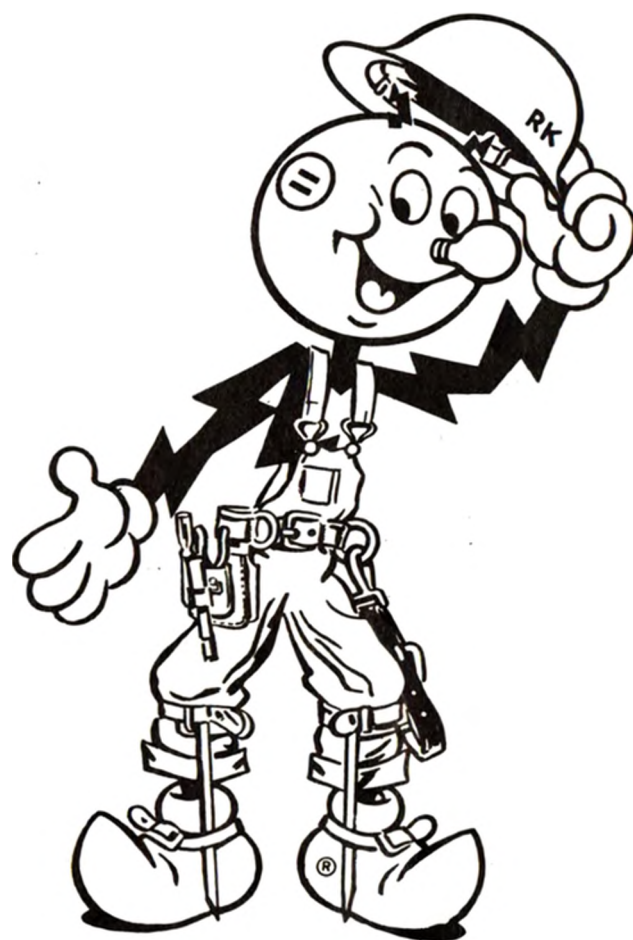
**MICHIGAN
TECH**

and the 1972

WINTER CARNIVAL

and best wishes to

**THE QUEEN
AND HER COURT**



**FROM REDDY KILOWATT
AND ALL YOUR FRIENDS
AT THE**

**UPPER PENINSULA
POWER COMPANY**

YOUR NEIGHBORS ARE THE BEST CABLE TV SALESMEN WE HAVE

Visit a neighbor with Cable TV.
If you're not sold when you arrive,
you will be when you leave.

Sometimes our customers use a
thousand words to tell you how
great Cable TV is.

But one picture would do the job.

WGN ELECTRONICS SYSTEMS INC.

610 SHELDEN
HOUGHTON, MICHIGAN

*Cable TV serving Houghton,
Hancock, Ripley, Dollar Bay,
Chassell, Hurontown
and South Range.*



The DOWNTOWNER MOTEL



*Overlooking Portage Lake
and the Lift Bridge!*

Electric Heat — Sauna
Room Phones — Color TV

110 Shelden Avenue
Houghton

Bill and Shirley Romps,
Props.

Compliments of the VERTIN STORES

— in —

Upper Michigan

Houghton — Calumet
Norway — Ironwood

*Where you can shop
in confidence.*



Penneys
ALWAYS FIRST QUALITY



*Have
A
Happy
Winter
Carnival*

THE MERCHANTS & MINERS BANK

for the Best in Banking



COPPER

MOTOR

COMPANY

Telephone 482-1800

P. O. Box 158
U. S. 41 South
HOUGHTON, MICHIGAN 49931



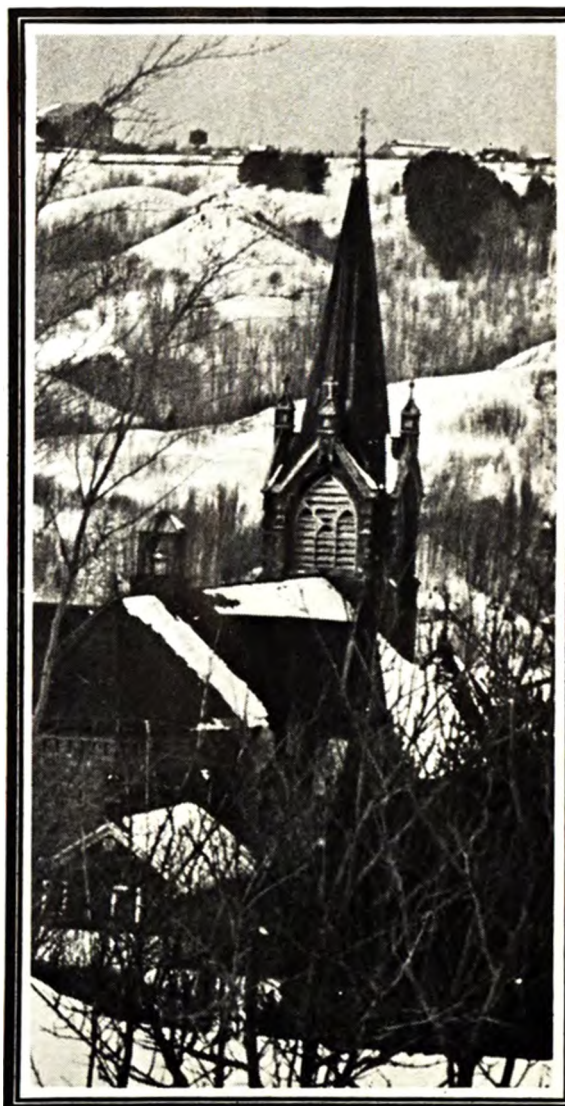
**ROY'S
PHARMACY**

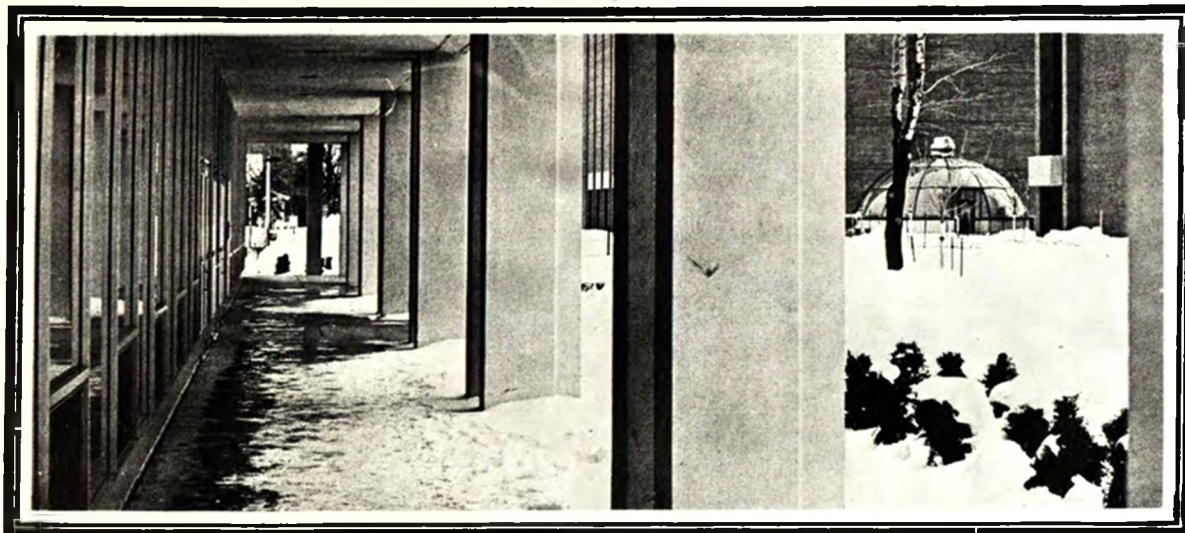
HOUGHTON
James E. Monette, R.Ph.



OUR 100TH ANNIVERSARY YEAR

CENTURY TWO. That's why you'll see a little "2" in our ads. It's a very special symbol, marking 1972 as Wards 100th Anniversary Year. As we begin Century Two, we rededicate ourselves to placing you, the consumer, first: with new merchandise, improved services, and value better than ever. For you, Century Two means we're making Wards better to serve you better—and the best is just beginning. Watch us and see!





Milwaukee's first beer won its second name in 1893.

(and we've been
Pabst Blue Ribbon
ever since)



• **Established 1844**

Pabst Brewing Company, Milwaukee, Peoria Heights, Newark, Los Angeles

Home of Homonym



Best Wishes from
Big Jon

The Library

Downtown Houghton

Sanders Candies

of Detroit

Tasty Treats

from our ovens

Decorated Cakes

our specialty

free delivery service

CROWN BAKERY

Houghton, Michigan

The Storvys

Books—Hobbies

Model Railroads

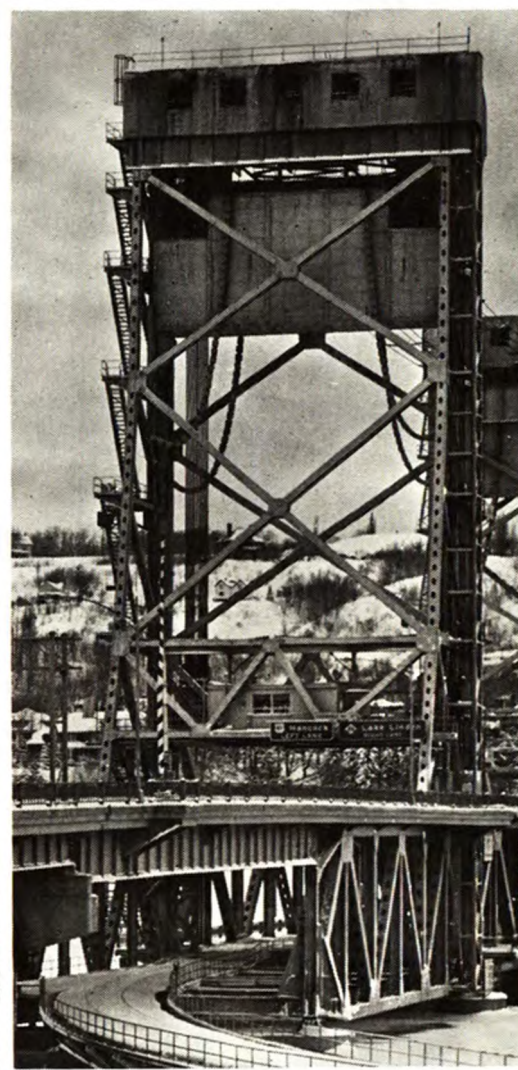
520 SHELDEN AVE., HOUGHTON, MICH. 49931
Tel. (906) 482-7304

**Our secret ingredient
grows on grapefruit trees.**

We don't use any artificial color or flavor in Squirt.
We use real live grapefruit instead. Which not only makes
Squirt a refreshing soft drink but a great mixer, too.



Coca-Cola Bottling Co., Hancock



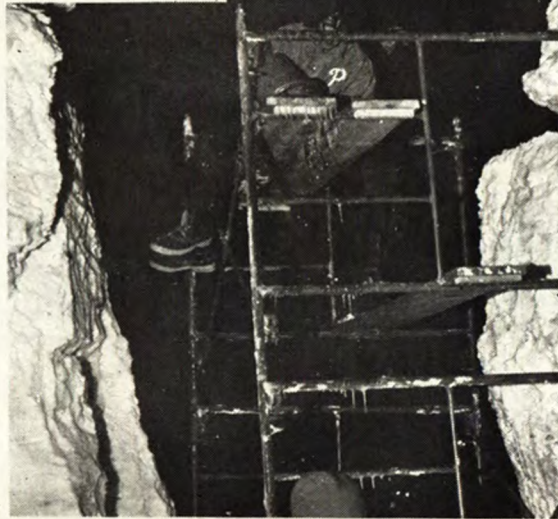
JERRY DEMOTTS

Graduate Photographer
New York Institute
Studios in Michigan

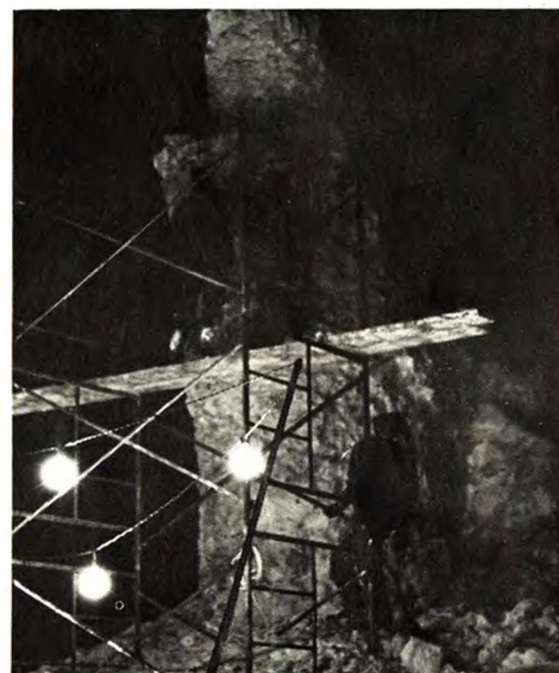
614 Sheldon Ave., Houghton, Mich.
482-1901

229 Genesee Ave., Iron River, Mich.
CO 5-4516

LaPorte - DeMotts Studios
610 Ludington Ave., Escanaba, Mich.
786-6653



Snow Statues Under Construction





TOGO'S

Home of the Submarine Sandwich
Featuring 34 Varieties
Italian and American Cold Meats
and from the grill
Steak, Ham, Bacon and Hamburgers

Open 11 a. m. - 2 a. m.
Deliveries after 5:30

In Houghton:
305 Shelden — Tel. 482-4821

In Marquette:
824 N. 3rd — Tel. 226-6535



Your clothes
conceal much
of your beauty
yet they hide not
the unbeautiful ...

KAHLIL GIBRAN

The store that brings you
tomorrow, today

JP's Boutique

located downstairs at

208 Quincy St., Hancock, Michigan 49930
482-6574



Bosch Brewing Company

Brewers of

Bosch Premium, Gilt Edge and
Light Sauna Beers

Distributors of Michigan Cask Wines

Best Wishes for an Enjoyable Carnival



Tappa Kega Day—Second East



Tappa Kega Day—Second East

Class B- 1st

TKD—2nd East



Hello, Hello!

Tappa Kega Day—Second East

Snow Statues



War, the blunder of all times!
Alpha Kappa Psi



Happiness is slide rule accuracy.
Douglas Houghton Hall

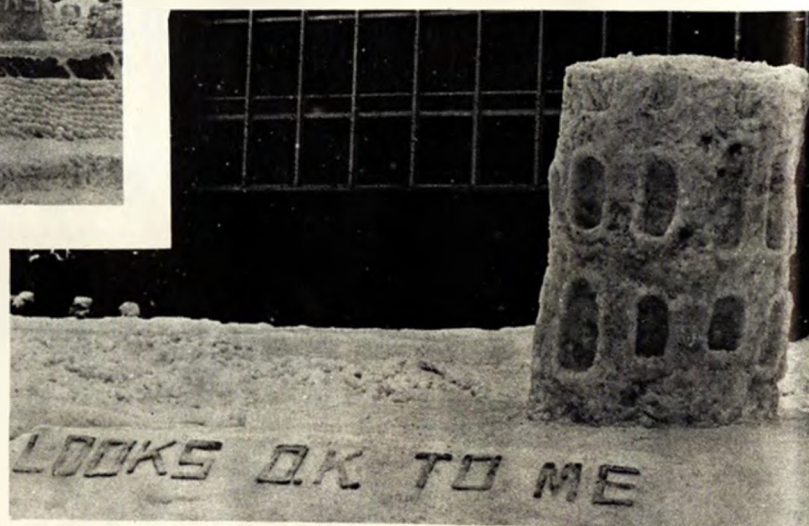


Who said "All systems go"?

Tau
Kappa
Epsilon



Sno capture's purrfect! Phi Kappa Tau



It looks O.K. to me.

A. S. C. E.



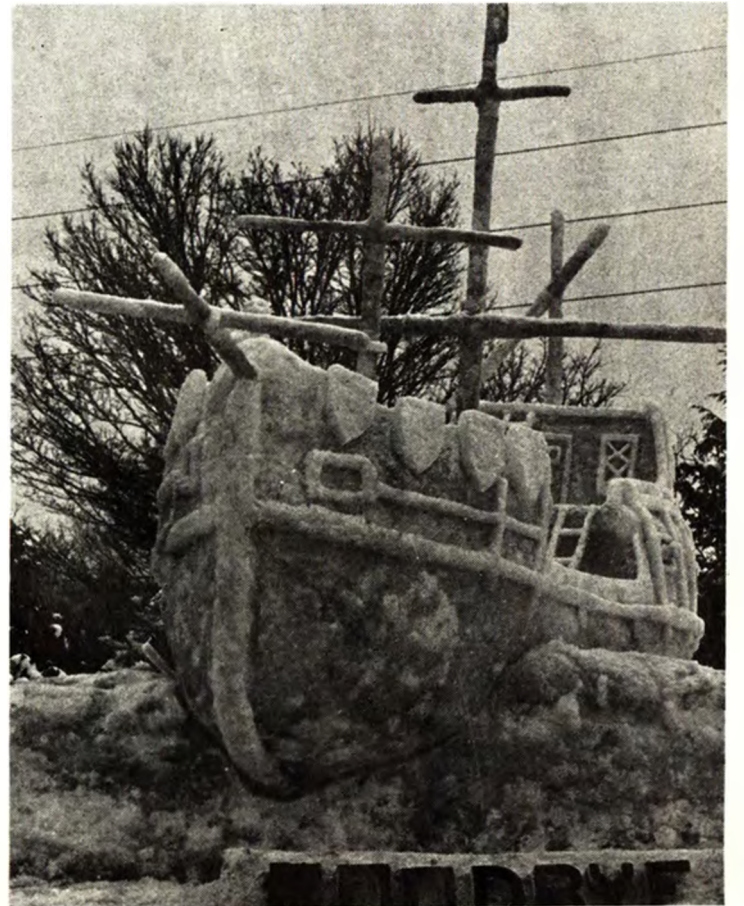
Look out Canonero.

Vets



It's sno-fun!

Theta Chi Epsilon



Good-bye Columbus.

Phi Kappa Theta



And God created woman . . . oops!

Beta Sigma Psi

1972 Winter Carnival

Snow Statues

Class A- 1st

Theta Tau



Oops, I created a freak.

Theta Tau



Theta Tau



Theta Tau

Class A - 2nd

Delta Sigma Phi



Delta Sigma Phi

Will-he tell?

Delta Sigma Phi

Class A - 3rd

Sigma Phi Epsilon



Sigma Phi Epsilon

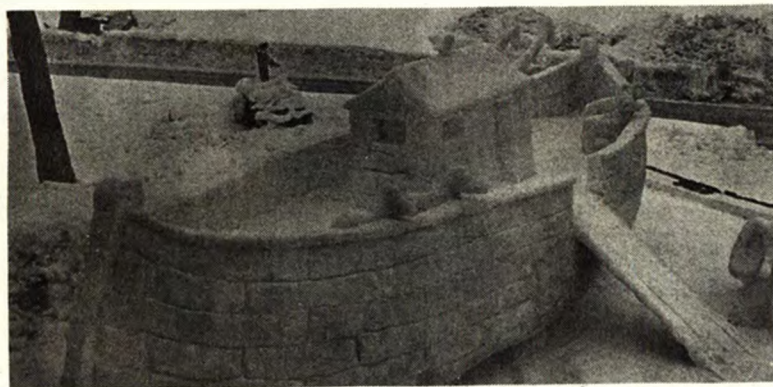


I have such a deal for you.

Sigma Phi Epsilon

Class B- 2nd

St. Albert the Great



St. Albert the Great

Today's forecast—sunny and mild.

Class C- 1st



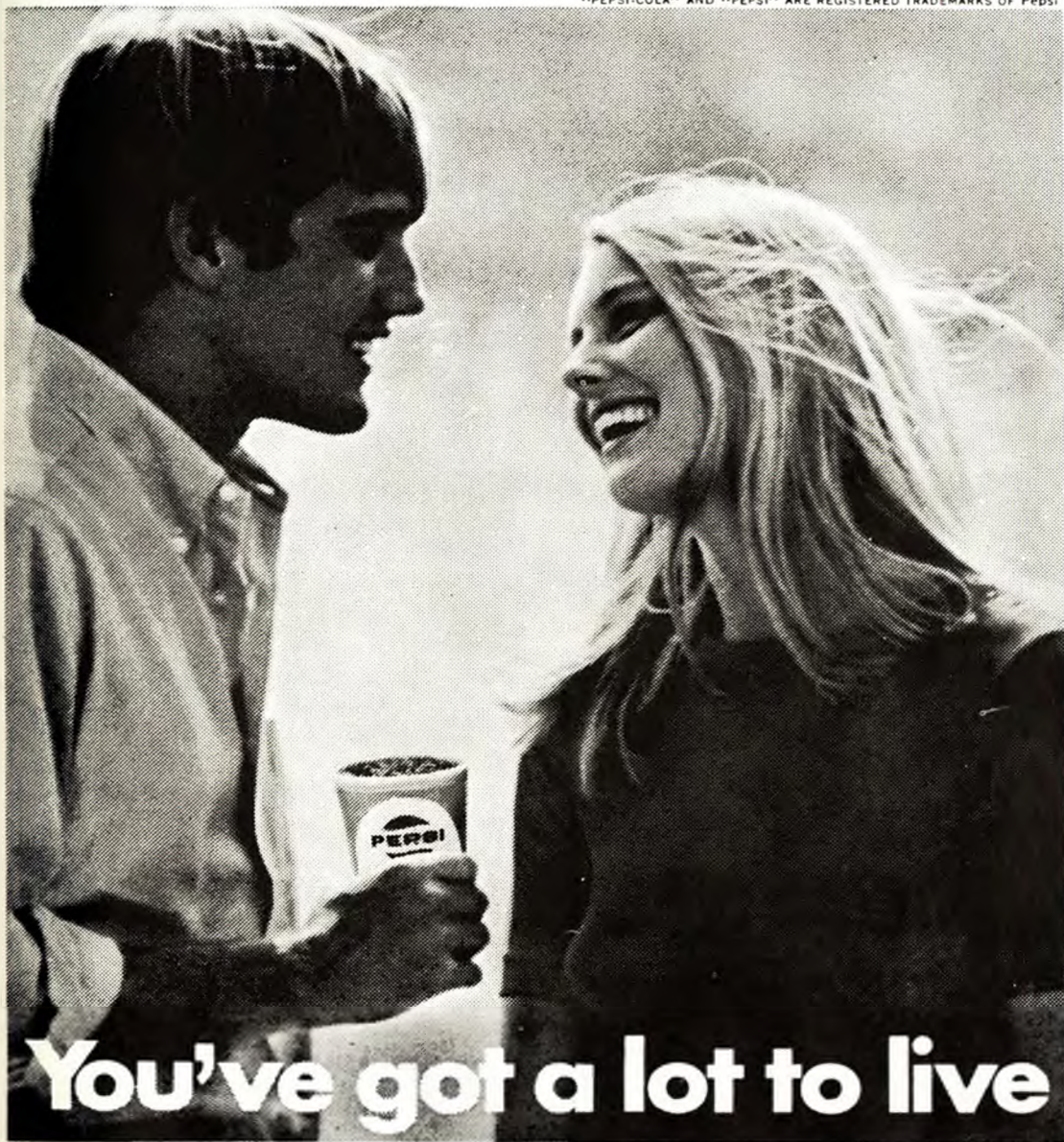
Knight—Eden

Knight House and Eden House



It's the Keweenaw's fault!

"PEPSI-COLA" AND "PEPSI" ARE REGISTERED TRADEMARKS OF Pepsi



**You've got a lot to live
Pepsi's got a lot to give**

What we mean is this: living isn't always easy, but it never has to be dull. There's too much to see, to do, to enjoy. Put yourself behind a Pepsi-Cola and get started. You've got a lot to live.



**Love's
Gels**
for your face,
cheeks and
body



**Love's
Moisturizing Gel®**

A pure, clear gel face moisturizer. Keeps skin soft and smooth. \$3.00

Love's Face Gel®

A transparent, sheer-textured gel for all-over face color. New shades: Deep Pink Bronze, Deep Peach Bronze, Deep Bronze. \$3.00

Love's Cheek Gel®

Sheer, natural color to give your skin the look of a glowing, real blush. New shades: Pink Bronze, Peach Bronze. \$2.50

New.

**Love's Body Gel™
with Applying Sponge**

Shimmery, transparent gel to bronze tint legs, arms, all over. In 3 shades: Pink Bronze, Peach Bronze, Bronze. \$3.50

**Westside
Pharmacy**

HOUGHTON

Yalmer Mattila Contracting, Inc.

Specializing in

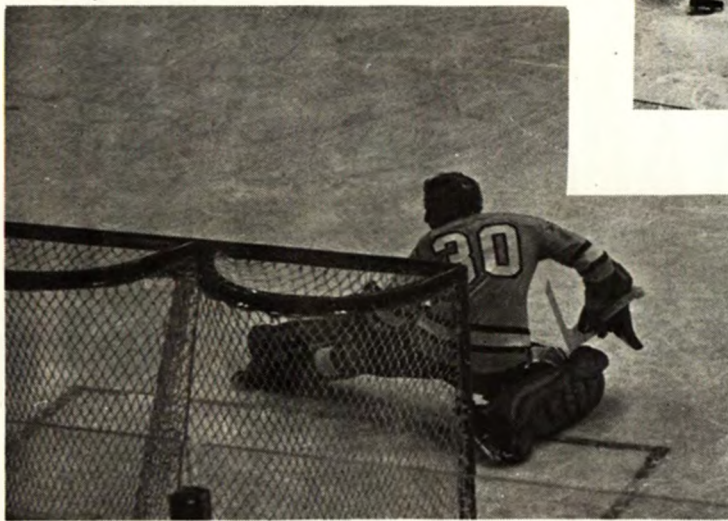
**Ready Mix Concrete
Commercial, Industrial
and Private Construction**

55 N. Huron St., Houghton Michigan

Including

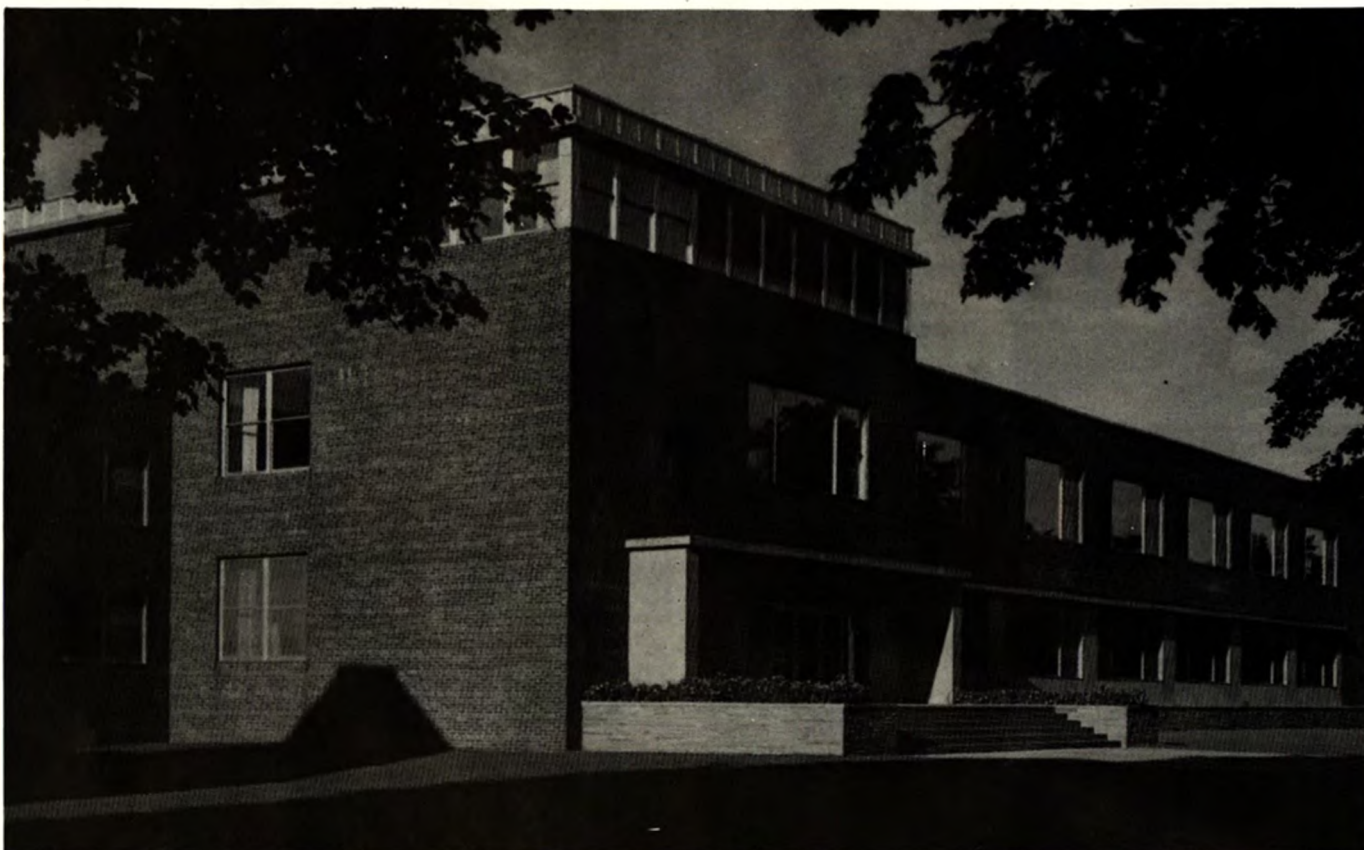
Huron Blacktop Corp.

**Quality Blacktop for
Private Roads, Drives, Parking Areas
and Municipal Work**



Michigan Tech Hockey





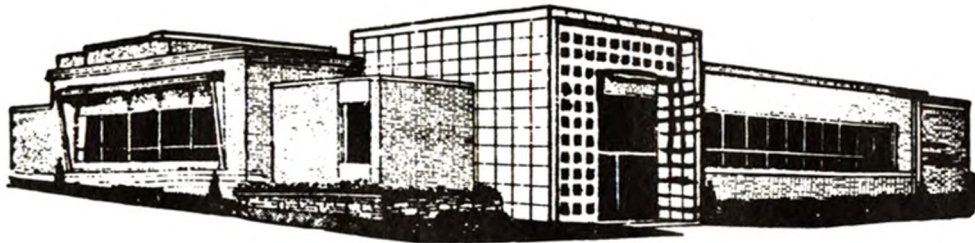
The Memorial Union

Congratulations to the Queen Candidates

The E. R. Lauren University Bookstore



The Superior National BANK AND TRUST COMPANY



It was a great pleasure serving you the past year.

And we look forward to being of service in 1972.

A FULL
SERVICE
BANK



FREE PARKING
DRIVE-IN BANKING

Monday thru Thursday
9:30 to 3:00

Friday 9:30 to 3:00
and 5:00 to 8:00

Hancock - Baraga



Your Full Service Bank

"The Bank of Superior Service"

Member F. D. I. C.



WEBER'S

2 - STORES

2 - SERVE - U

IN

DOWNTOWN HOUGHTON

Congratulations

To

MICHIGAN TECH'S
WINTER CARNIVAL

*and all who help to make it
the best in the country*

WEBER'S

2 stores are your home town
stores when you are away
from home.

We are here to help you
all-ways.

*Complete Wearing Apparel
Sporting Goods — Gifts*

**SPECIAL
CARNIVAL SALE**

Leica

DUPONT

NIKON

MAMIYA

Honeywell

ACUFINE



Kodak

Wilcox Studio
Houghton

James T.
HEALY
AGENCY

INSURANCE

DOUGLASS HOTEL BLDG.,
HOUGHTON

Call 482-3380



MARTY O'CONNOR "INS."



HOUGHTON, MICH.
TEL. 482-1130

There is hardly anything in the world that some man cannot make a little worse and sell a little cheaper, and the people who consider price only are this man's lawful prey.

Douglass House

— Serving —

SUNDAY BRUNCH

BANQUETS

FRIDAY FISH FRYS



Giving the Copper Country
the best in fine foods

• ALSO •

Onigaming Supper Club

May thru October



SWIFT HARDWARE

When you want . . . —real friendly service

—a real big selection —the lowest prices in town

314 Shelden Ave.

Houghton, Michigan

Compliments of

Cohodas-Paoli Co., Inc.

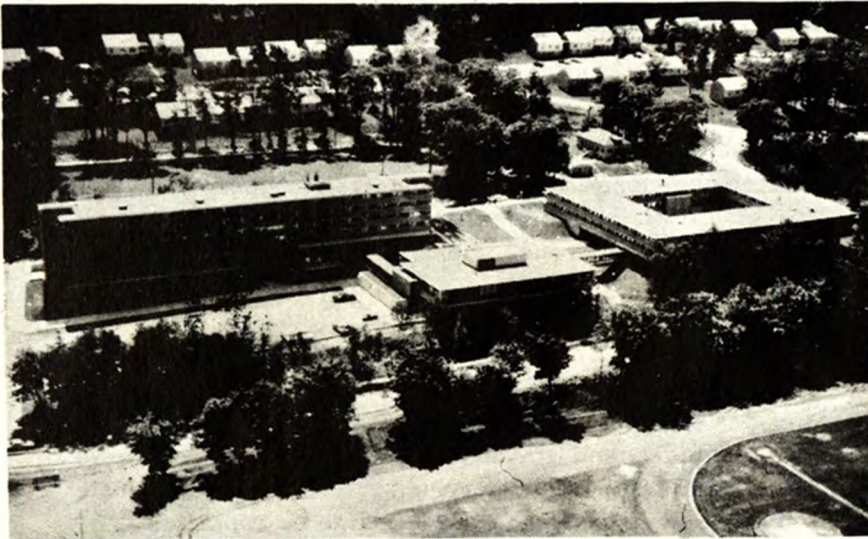
wholesale



Fruits-Vegetables-Groceries
Institutional and Frozen Foods

Houghton — Ironwood

Thanks for Another Successful Winter Carnival



from

M.J. Electric, Inc.

Electrical Contractors

Bio-Chem Bldg. Administration Bldg.

Coed Hall Daniell Heights

Fisher Hall ME-EM Bldg.

Student Complex

SHOP

*For Everyday
Parties and
Special Occasion*

JIM'S FOODMART

HOUGHTON

*SPECIALIZING IN
FINE FOODS
AND
BEVERAGES*



Herman Gundlach, Inc.

The General Contractor

Building Construction

Houghton, Michigan

Tel. 482-2480

**Copper Country
Engineering Corp. and Concrete Corp.**

58 N. Huron Street

Houghton, Michigan

Tel. 482-0601

Class B

Stage Revue



Vets



Tricky Dick—Superstar.

Vets



The Dee is done.

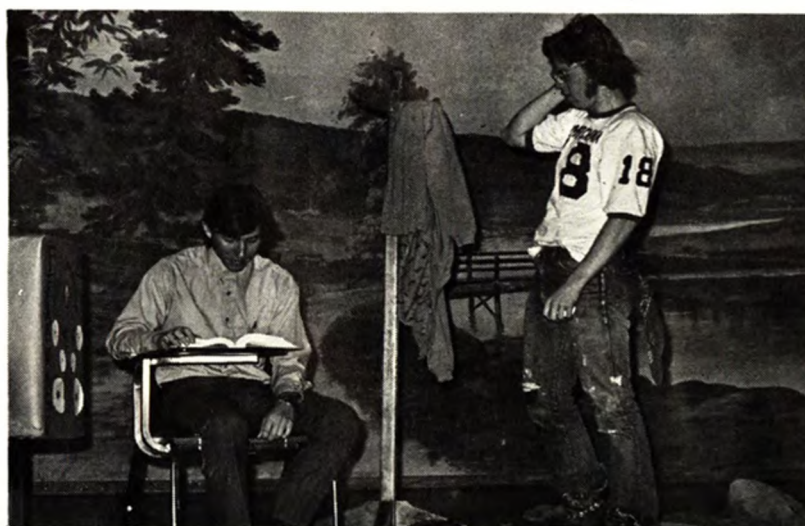
St. Albert the Great



St. Albert the Great



Foresters



WMPU—The voice and the choice of the Copper Country.

Foresters



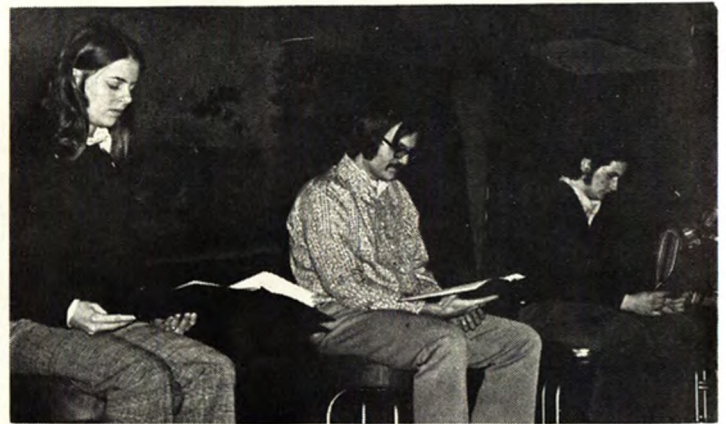
Foresters



Monday night at the Forum. Beta Sigma Psi



Beta Sigma Psi



-No more war.

Sigma Rho



The Headstrong Chronicle.



Phi Kappa Theta



Phi Kappa Theta



Sigma Rho

Class A



Phi Kappa Tau



The further adventures of . . . Phi Kappa Tau



Ma and Pa Kettle go ape. Delta Sigma Phi



Phi Kappa Tau



Delta Sigma Phi



Delta Sigma Phi

Class C



Snow Whiteless and the 7 Dwarfs.



Phi Lambda Beta

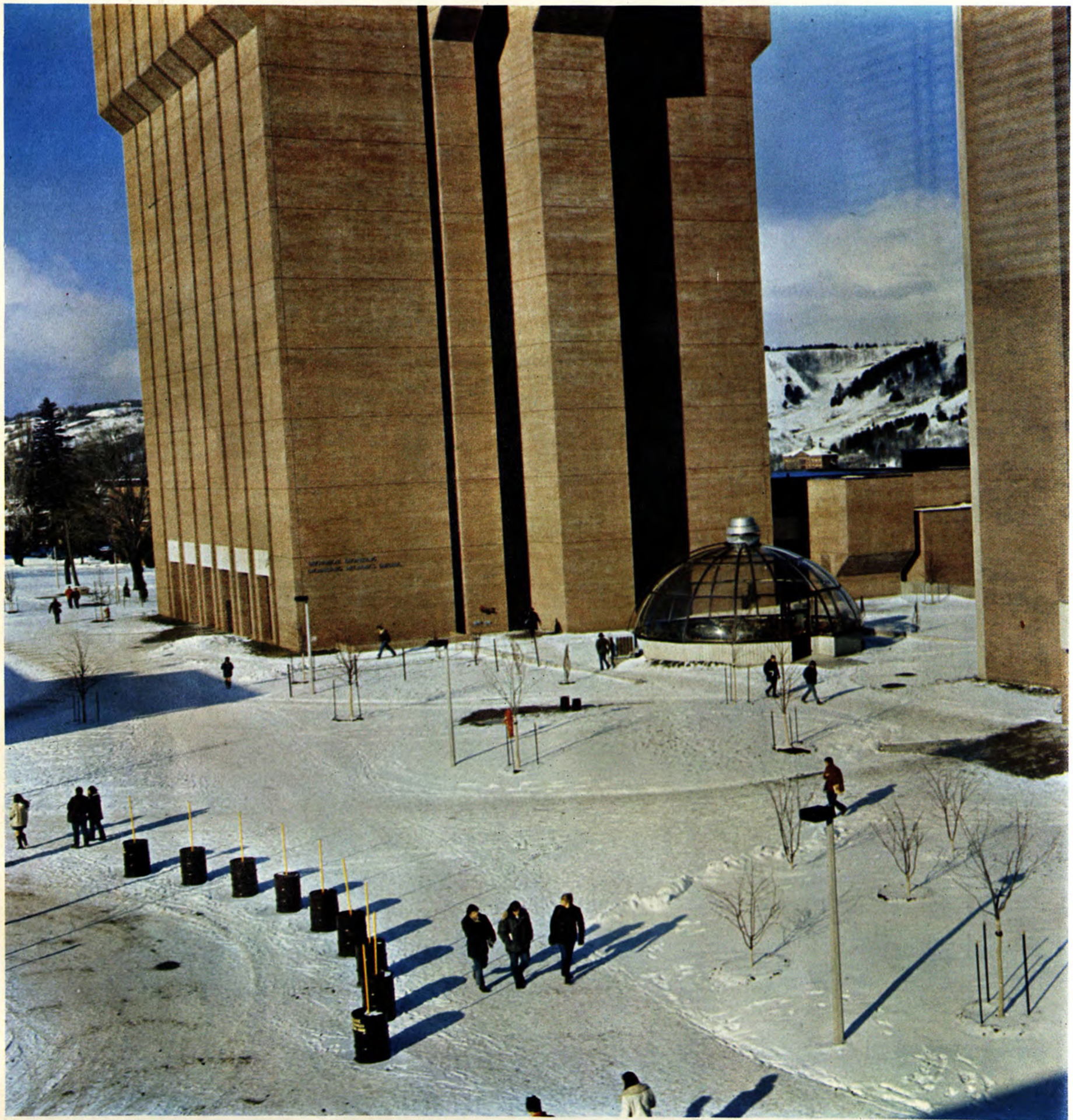


Mini Hipster's Beautiful Body Clinic.

Tech Wives







**Michigan Technological University
Houghton, Michigan**

MTU Winter Carnival History



A dogsled of years past bearing its cargo of "Toot's Delight".

The Winter Carnival with which we are familiar at Michigan Tech and, which sometimes seems like a very regulated tradition, has seen many variations in the past years. Many changes have been made since the Ice Carnival of 1922. This was a circus show on ice given by students performing in animal costumes. Band presentations, competition figure and speed skating were also included in the one day festivities.

In late winter of 1924 a circus big top was pitched on the campus and acts similar to the 1922 Ice Show were performed in the sawdust ring. That evening 1,100 people from the college and the Copper Country paid admission to see the show—a fantastic crowd for the Copper Country at that time.

The first Carnival Queen was chosen in 1928 and, featured in that Carnival, was a float parade.

It wasn't until 1934 that hockey became part of the tradition with the first two-game series against the University of Minnesota. The Blue Key organized this Carnival and added the competitive events of skiing, skating, and snowshoe races, and, also, a dance. The Tech instructors challenged the local businessmen to a hockey game and were outwitted on the ice.

1936 brought the first snow statues built by students and the local children. The statues generally reflected the nature of the organization rather than being based upon a unifying theme. The Flying Club built an airplane and the Electrical Engineers built a generator. Accumulated information on building methods from these early statues enabled them to reach their present size and complexity of detail.

The first judging of skits was held in 1946 in the Kerredge Theatre in Hancock.

1947 saw the advent of the beard contest and 1948 began a series of ice shows featuring local talent and amateur stars from all over the world. Often invited were Olympic contenders for the skating performance.

A change in format appeared in 1953 with the "Boom Copper Days". An "Old Time Gambling Hall" was set up in Dee Stadium complete with dancing, gambling, and a chorus line of coeds for entertainment.

In 1955 a Queen contest was again held. The judging was based upon the candidates' skiing and skating ability.

The first concert held in conjunction with Winter Carnival occurred in 1962 when the Four Preps were sponsored by the Student Government. That year, too, a flare pageant provided a colorful addition to the Carnival.

The 1972 Winter Carnival is a product of the additions and deletions made throughout the years since the first Ice Carnival. It is truly a unique series of contests and activities designed by time and much hard work to make it an exciting and enjoyable holiday.



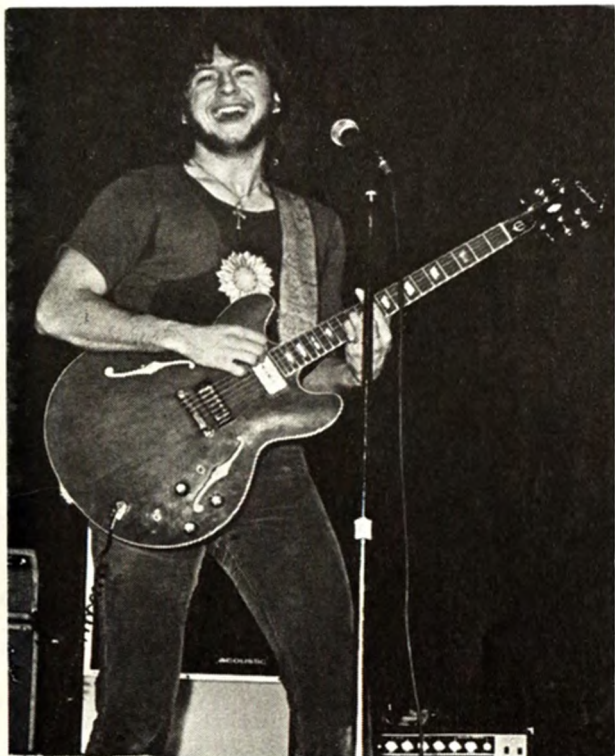
The Portage Lake Figure Skating Club performing one of its formations.



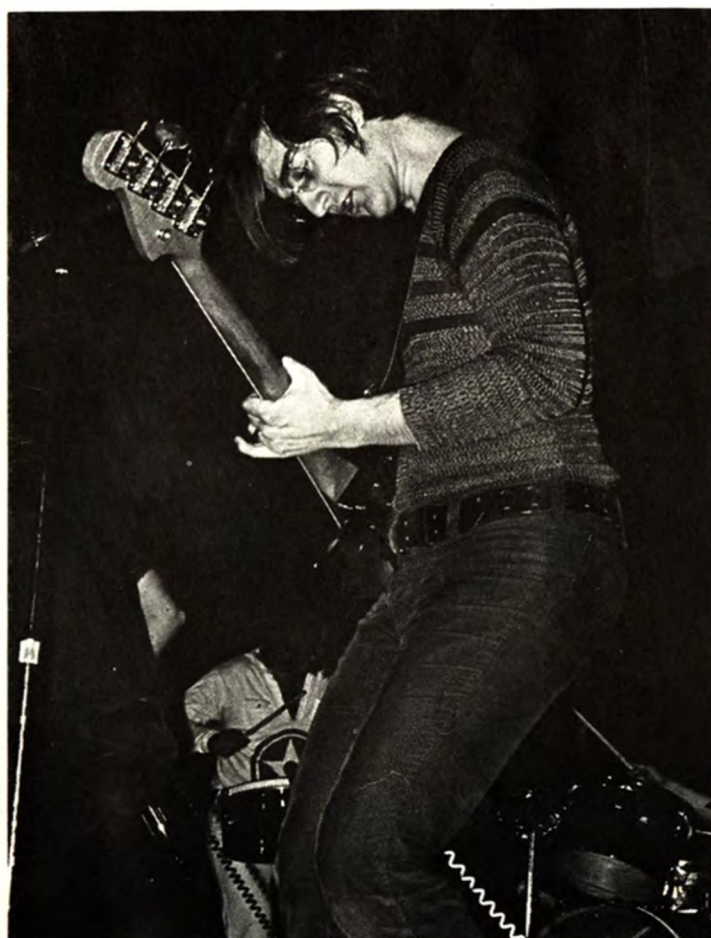
A snow statue of the past.

1972 Winter Carnival Concert



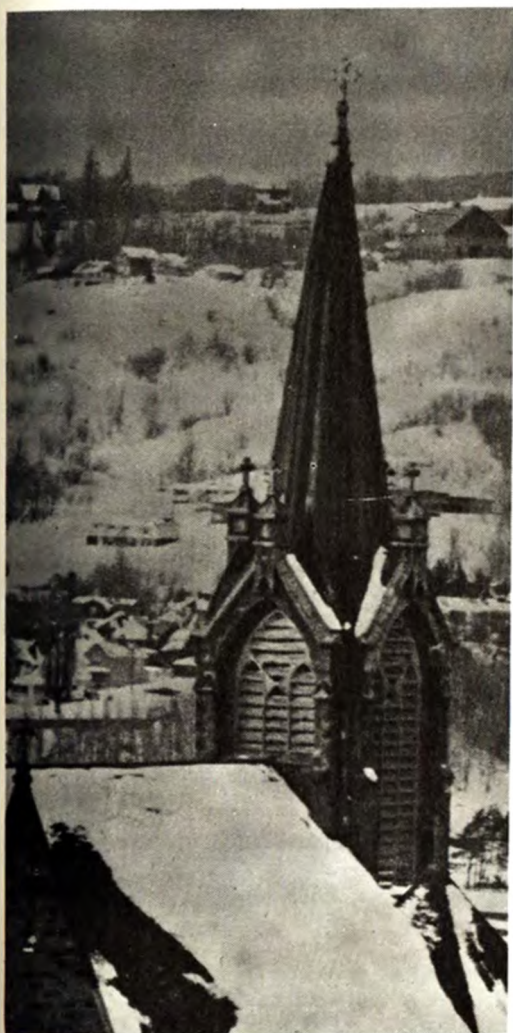


Ides of March



Sammy Award Snow Statues

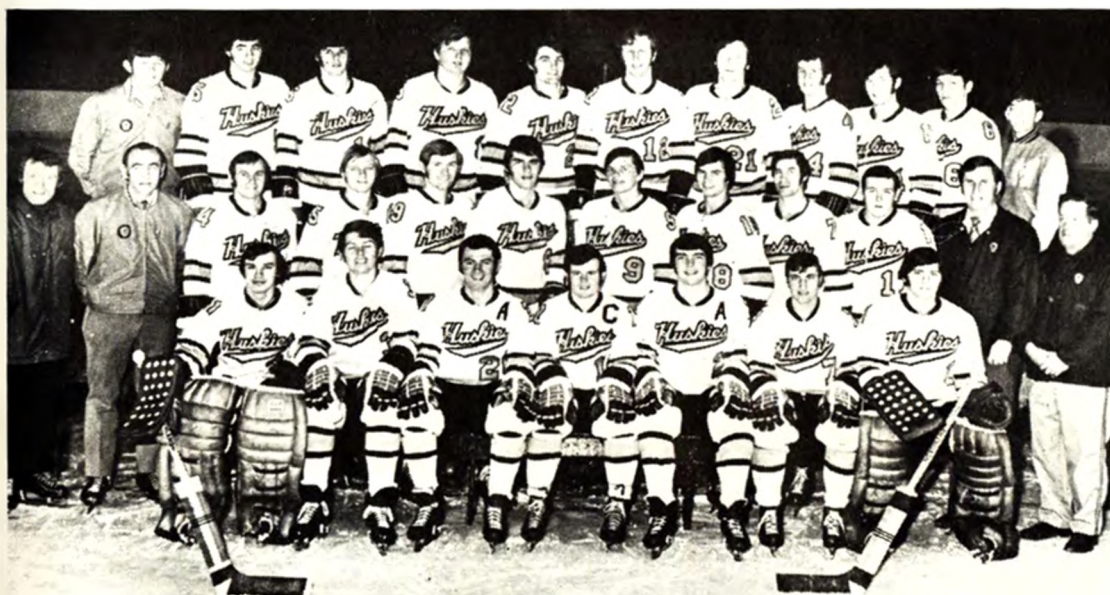




Northern Auto

Chrysler — Plymouth
Dodge

Hancock, Michigan
482-0620



"Congratulations from your
Number One Tech
Supporter on the BEST
Winter Carnival in the
country."

ED HAAS & CO.

Houghton, Michigan

John MacInnes is our coach and our team is Number One



The national anthem.

The new
**Michigan Tech
 Student Ice Arena**

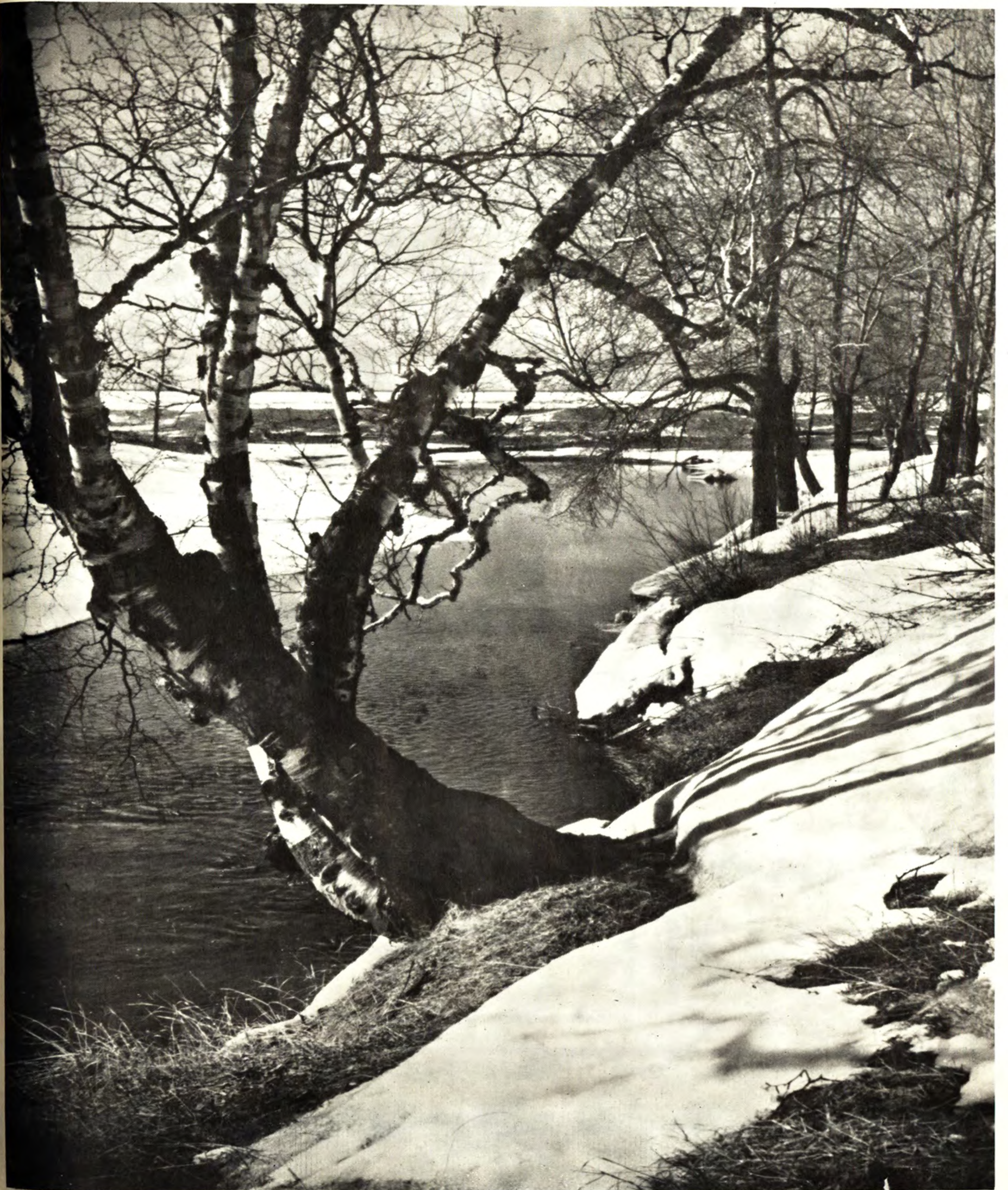


Lou Angotti, star of the Chicago Black Hawks, drops the first game puck in the new Michigan Tech Student Ice Arena.



Lou Angotti—Chicago Black Hawks, Darwin Mott—MTU hockey team captain, John MacInnes—MTU hockey coach, R. L. Smith—MTU president, Alan Bovard—MTU athletic department head.





Odd shapes, a variety of materials, and endless combinations of colors provide the basis for the handiworks of Nature. Similar components are combined by the printer to express ideas in word and picture. We have been doing that for more than 70 years. The Book Concern, Printers, Hancock, Michigan.

Subscribe to the
Michigan Tech Lode

HOUGHTON, MICHIGAN 49931

MAILED DIRECTLY TO YOUR HOME

\$1.50 for 1972 Spring term

\$2.00 for remaining 71-72 school year

\$4.00 for 72-73 school year

\$6.00 for 1½ year subscription

Send address and check

Subscription Editor

Suite 122 Memorial Union

Houghton, Michigan 49931

COPPER CROWN

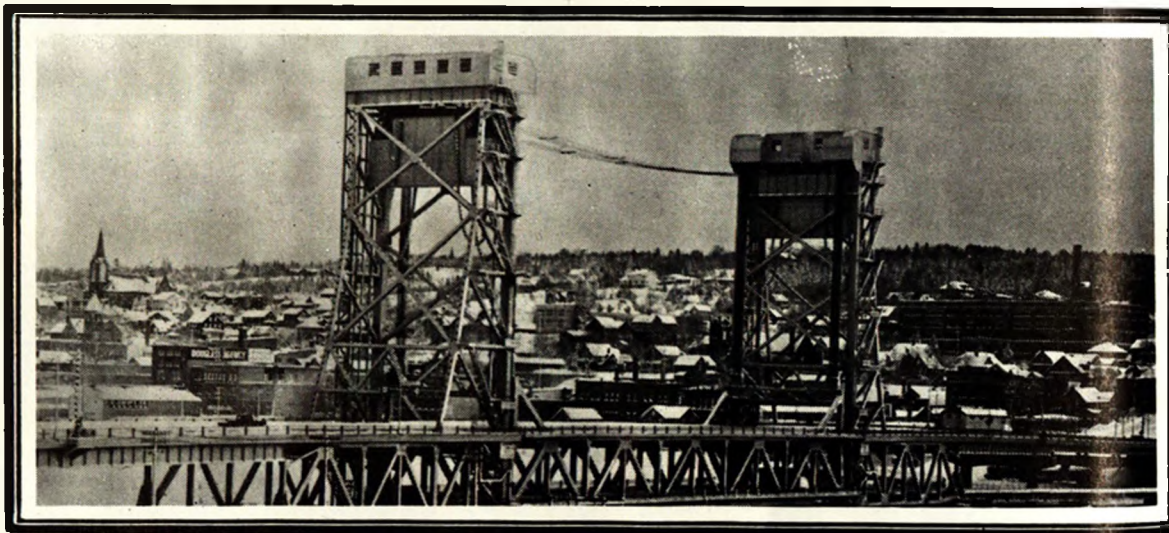


**34 Total Electric
Units**

Indoor Pool

Sauna

U. S. 41 — Midtown Hancock



KIRKISH FURNITURE

Houghton

*Copper Country's Largest
Home Furniture Center*





