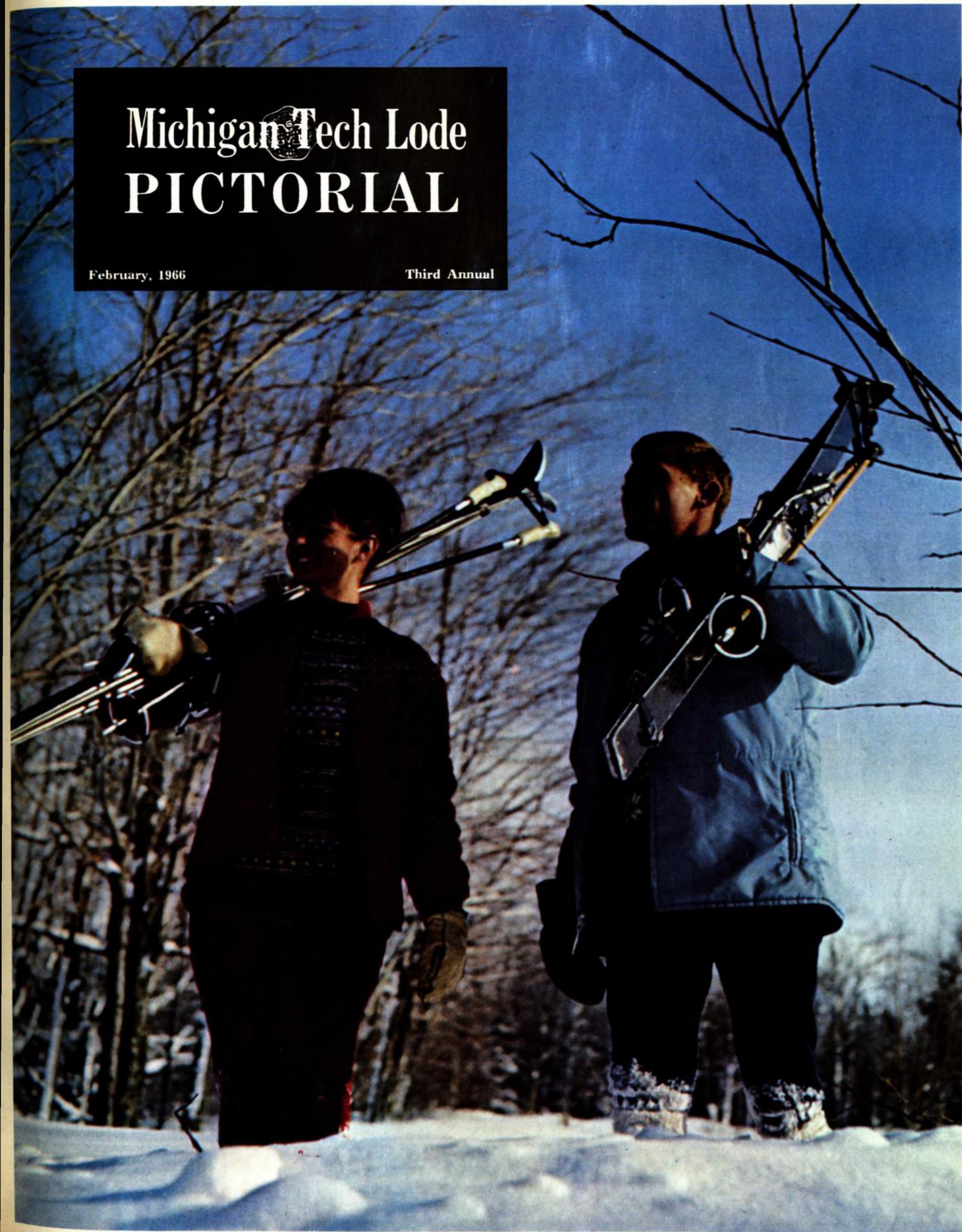


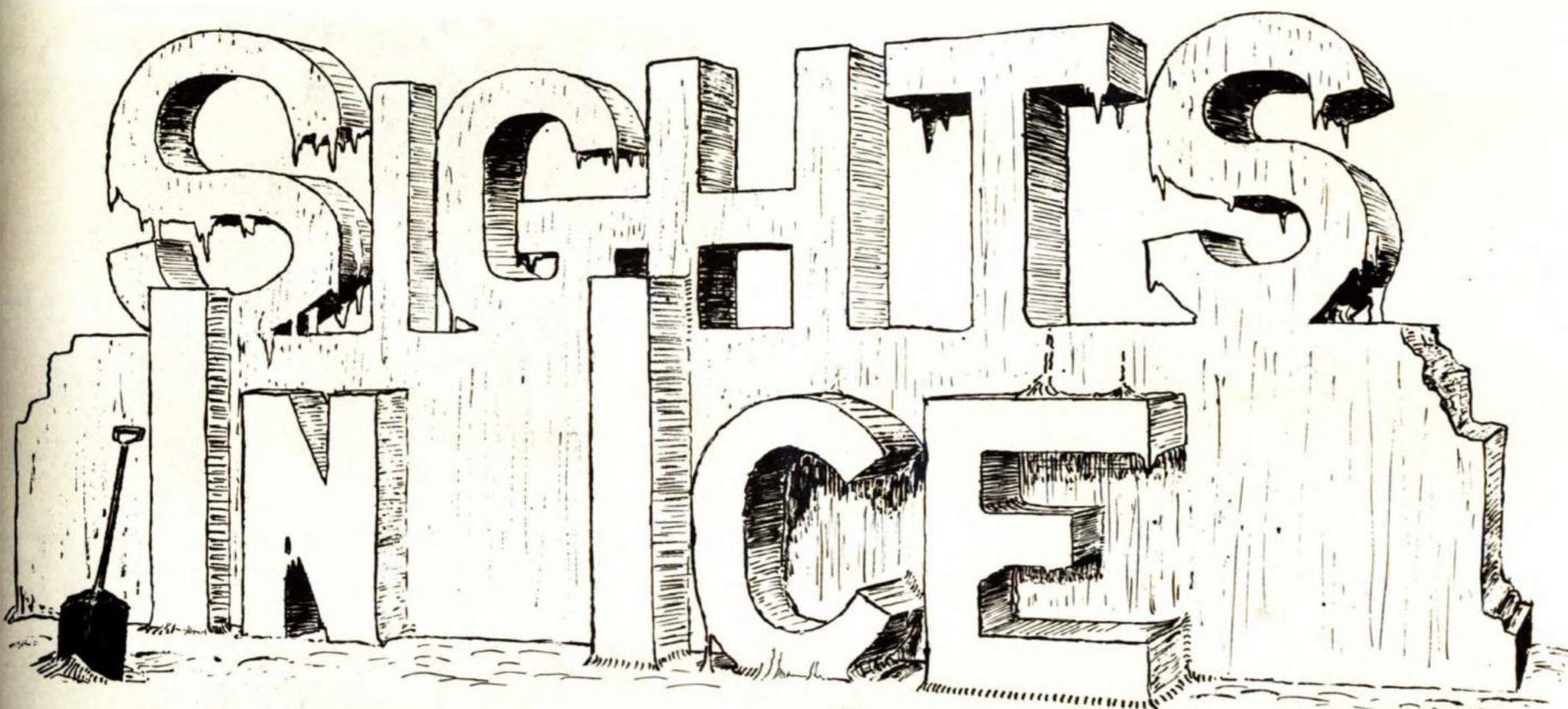
Michigan Tech Lode PICTORIAL

February, 1966

Third Annual







CONTENTS

Blue Key	4
Beard Contest	5
Import Bus	6
Queen and Court	9
Statue Construction	15
Old Statues	21
Special Events	25
Carnival Scoreboard	28
Hockey	29
Concert	30
Tall Tales	32
Snow Statues	43
Skit Contest	49

STAFF

Editor	R. Pierce
Business Manager	W. Hayes
Photo Editor	C. Eshbach
Photographers	E. Riske
	E. Jurewicz
	Joe Kirkish — Color
Layout	W. Vande Kieft
	E. Dzierwa
	J. Zukowski
Staff Writers	J. Polakowski
	L. Boho
Printer	The Book Concern, Hancock
Color Printer	McKay Press, Midland
Art Work	R. Lovell

COVER

The color pages presented in this issue of the Pictorial are typical of the Copper Country and Michigan Tech's winter term in particular.

On the cover and inside back page, we find Dianne Dover and Bruce Osten in a setting which depicts the mood of Carnival '66.

It is a time for a guy and girl to take a break from the routine of classes and enjoy a weekend that for all of its activities and attractions is not equalled by any College or University, regardless of size, anywhere.

The following pages should support Tech's claim to the satisfaction of even the most doubtful reader.

PHOTO CREDITS

Riske — 4, 5, 6, 9, 15, 16, 26, 27, 28, 29, 30, 31, 41, 43, 44, 45, 46, 47.

Eshbach — 4, 5, 6, 9, 10, 11, 12, 15, 16, 25, 26, 27, 28, 29, 30, 31, 41, 43, 44, 45, 46, 47.

Jurewicz — 28, 29, 49, 51, 52, 53.



With the help of Dean Meese, Dave Yoder and Bill Heglund pack one of the boxes of snowballs to be sent to Southwest Texas State College.

BLUE KEY PROJECT '66 SIGHTS IN ICE

This year, as it has each year since 1934, Blue Key National Honor Fraternity is sponsoring the Michigan Tech Winter Carnival.

Blue Key is an honorary service fraternity for outstanding upperclassmen. Blue Key was established at the University of Florida in 1924 by Dean Riley, then a member of the faculty. The purpose in establishing Blue Key was to coordinate activities between various campus organizations.

Since the aim of Blue Key is to develop the leadership abilities of its members, the Michigan Tech chapter feels it best accomplishes this through the sponsorship of Winter Carnival. Winter Carnival is the main project of Blue Key and preliminary organization of the Carnival begins as early as October. Each person not only participates in a committee, but attends a weekly Blue Key meeting which coordinates all Carnival activities.



Mike Boho, pictured at the right, helps to organize dress rehearsals at Hancock High School.



View down College Avenue in the early morning hours as statue construction draws to a close.



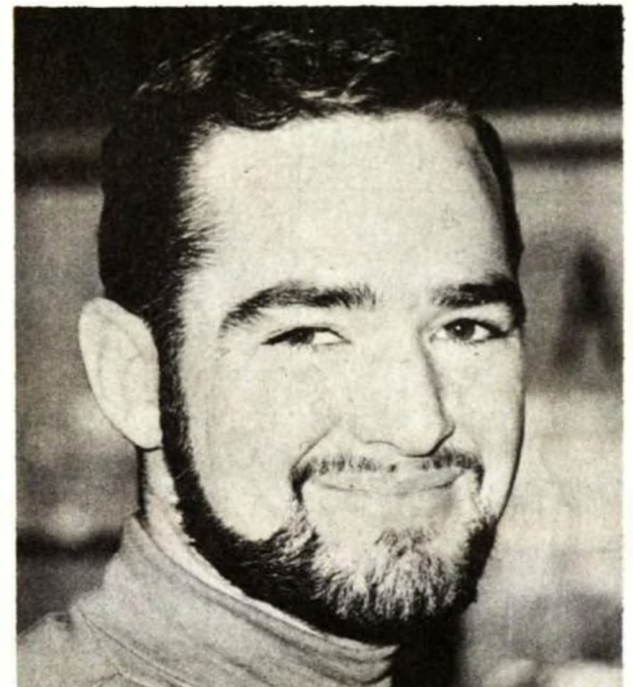
Dave Yoder was MC during the beard judging ceremony.



Mike Foote

BEARD CONTEST

The annual Winter Carnival Beard Contest is a good excuse for the men of Michigan Tech to take on a grubby appearance during the first three weeks of winter term. Not that they don't look as bad during the rest of the year, but for once there is an excuse. The contest began the second week after the Christmas holidays and each contestant had his growth judged at 12:30 p.m. on Thursday, February 3, 1966. This year the entrants were given four categories around which they could style their furry creations. The most popular style was the full beard. Mike Foote earned himself a first place with a beauty of a red beard. Second place went to Tony Passalacqua, and third to Noel Hanna. The novelty classification was judged on the basis of originality and overall appearance. The winners were Bob Cole, Gary Oberlander and Bill Schmidt. There were no entries in the Vandyke or mustache-goatee category.



Bob Cole

The Pictorial's roving photographer seemed uncertain as to whether or not he should enter the contest.



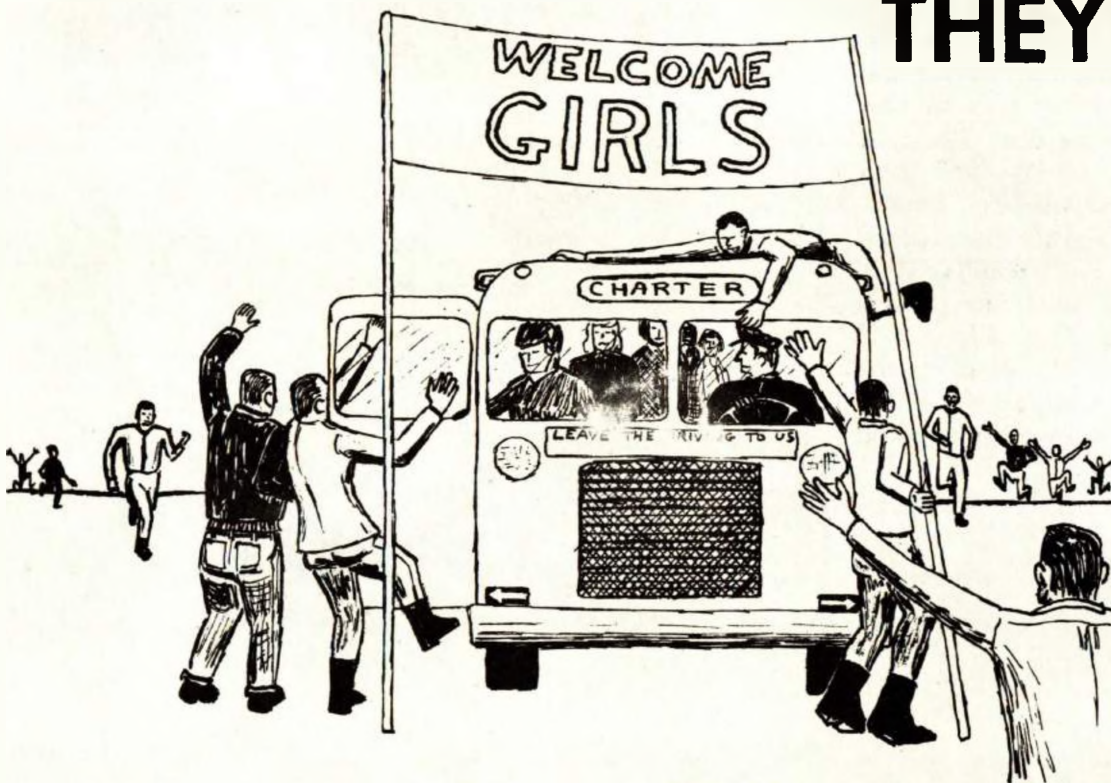
WHDF set up a broadcast stand in the Union Lounge to cover Carnival activities.





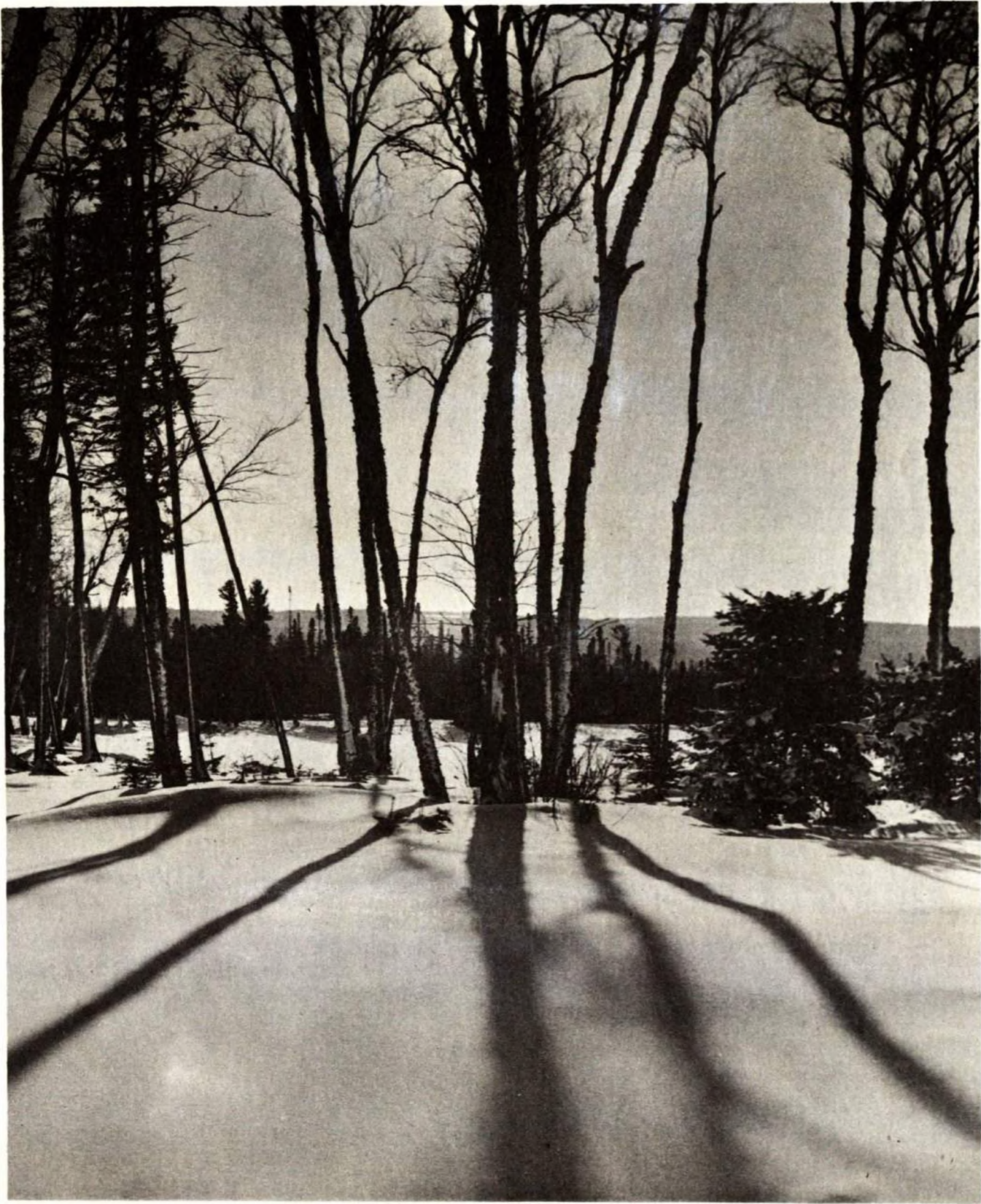
LATE, BUT

THEY FINALLY CAME



As the buses of girls rolled in there was a mad dash as Tech-men ran to greet their girlfriends. At long last Winter Carnival has truly begun.





**Serving The Copper Country
Since 1865**

HOUGHTON NATIONAL BANK

HOUGHTON, MICHIGAN

Member, Federal Deposit Insurance Corporation

Herman Gundlach, Inc.

The General Contractor
Building Construction
Houghton, Michigan
Tel. 482-2480



Copper Country Concrete Corporation

Gundlach Ready Mixed
Concrete

58 N. Huron St. — Houghton, Michigan
Tel. 482-0601

CONGRATULATIONS ON YOUR WINTER CARNIVAL



Grade "A" Dairy Products
Produced and Processed Locally
MODERN PLANT

Copper Country Dairy, Inc.

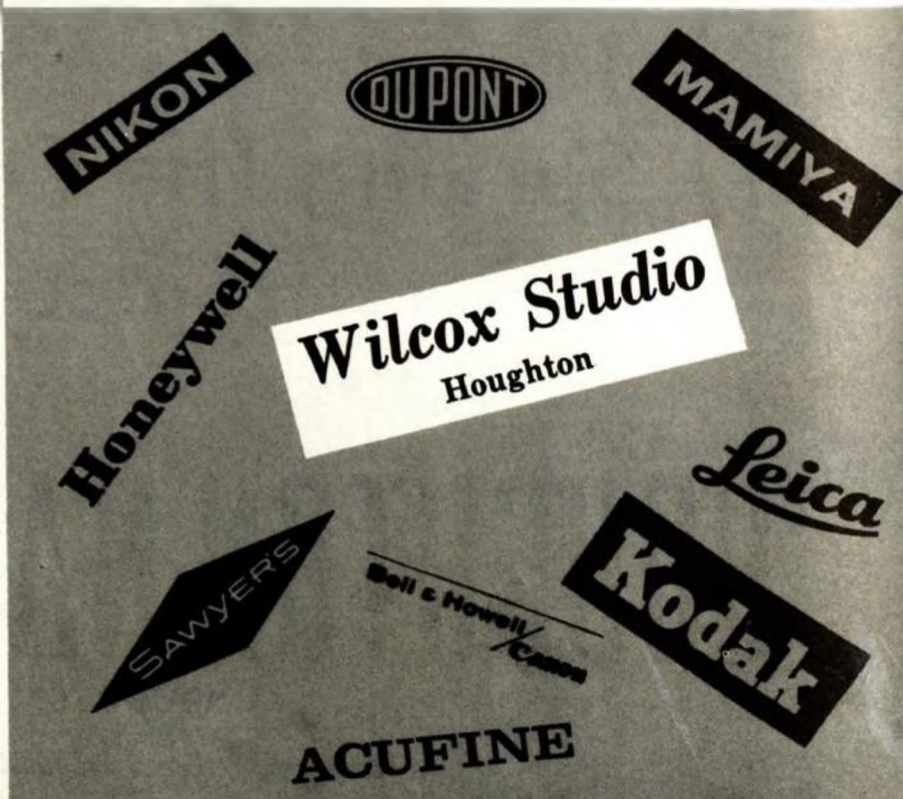
Dollar Bay — Baraga — Ishpeming

Compliments of COHODAS PAOLI

Wholesale

- Fruits
- Vegetables
- Groceries

HOUGHTON





LINDA POKELA REIGNS OVER CARNIVAL

A capacity crowd attending the Queen's Coronation set the theme for a busy and fun-filled weekend.

All the waiting, practicing, and anxiety for 12 beautiful girls came to a climax on this night. The program was started by the appearance of each candidate in evening gown dress. This was followed by individual displays of talent ranging from pantomimes to piano playing.

As each contestant presented herself, the judges were called upon to note poise, grace, and talent abilities. A pleas-

ant smile, natural ease before a very critical audience, and that extra bit of effort spelled success and queenhood for only one girl. A very difficult decision indeed as the judges deliberated for a full half hour.

At last the moment arrived; Linda Pokela, sponsored by Beta Sigma Psi, was crowned queen by Dr. R. L. Smith, president of M. T. U.

Her humorous talent presentation, winning smile, and natural charm make Linda a beautiful and poised queen to reign over the week's festivities.

Below—Linda Pokela and her court after coronation ceremony.



Representing Phi Kappa Tau was **Pat Harvey**, a junior in liberal arts at Tech from Calumet. Her interests include hockey, football, and the piano. When asked how it felt to be a queen candidate, Pat replied, "... fun, experience, work. . . ."



The Kappa Delta Psi Fraternity chose **Judy O'Conner**, a junior at St. Joseph's as their candidate. Judy is a resident of Hancock where she spends her leisure cooking and swimming. She put her talents in dramatics to work in the talent show.

Mary Milde, a freshman at St. Joseph's, represented the Independents. Mary is a resident of Dollar Bay where she keeps up her interests in cooking and swimming, in season of course. She also delivered a dramatic reading at the talent show.



Newman House chose **Janine Helakoski**, a freshman at Tech. Among her interests are "All kinds of sports and analyzing handwriting." An interesting note is the fact that she has analyzed the handwriting of our entire hockey team. Maybe some of the coaches in the WCHA would be interested in the results.



The Sig Ep's decided on **Jean Trimberger**, a business administration major at Tech, as their representative. Jean comes to us from Ontonagon, Mich., where she spends her leisure swimming, bowling, and skiing. She seemed amazed at the amount of work that was going into statues and said that "Winter Carnival gives the student a break and allows his interests to take a breather from academics."

Ruth Tegen, a native of Grayslake, Ill., was chosen to represent the Theta Tau Fraternity. Ruth is a student at Suomi College where she enjoys both snow skiing and water skiing in her spare time. She presented a skit about snow skiing for the talent show.



The Beta Sigma Psi membership selected **Linda Pokela**, a business major at Suomi, as their candidate. When asked to comment on her impression of Winter Carnival, she paused and replied, "It's one of the best ways to get active in the community." At the talent show, she did a skit in French with the appropriate translation.



Janet Isaksen, a freshman at Suomi College was picked to represent Delta Sigma Phi. She is a resident of Absecon, New Jersey, and lists skiing, skating, and knitting as some of her many interests. Janet presented an interesting travelog on Norway at the Queen's talent show.

Susan Penegor, a special education major at Suomi, represented the Sigma Rho Fraternity. When asked how it felt to be a candidate she replied, "It's different, but I'd go through it again." She added, "you get a chance to meet a lot of people." Susan presented an amusing story taken from Declamation at the talent show.



Triumvirate's choice was **Linda Jarvi**, a freshman at Suomi College. Linda resides in Alpha, Michigan (a metropolis of 350 people). When asked what the people of Alpha do at night for excitement, she replied, "We leave!" Among her interests are motorcycles and collecting salt and pepper shakers. Her contribution to the talent show was a dramatic reading.



The Newman Student Association chose **Anne Sobiegraj** to be their representative. Most students should recognize Anne as one of our Tech cheerleaders for the last two years. Anne's talent was displayed in the 1965 Excursion in Sound. Her leisure time is spent "shopping and spending money." Anne is presently a math major here at Tech.

Nancy Lukkarinen, a freshman at St. Joseph's from Negaunee, Michigan, was selected by the Foresters to represent their organization. Nancy presented an original humorous oration at the talent show. Among her many interests are debating, forensics, skiing, swimming, and bowling.



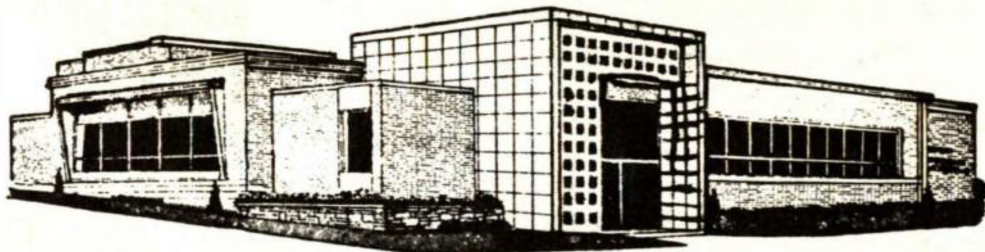


From these pictures it can be seen that queen competition at Michigan Tech's Winter Carnival requires the candidates to participate in many and varied activities from playful romping in the snow and fierce talent competition, to tense moments backstage before the coronation.



The Superior National BANK AND TRUST COMPANY

Free Parking
Drive-in Banking
Open Monday thru Thursday
9:30 - 3:00
Friday 9:30 - 3:00 and
5:00 - 8:00



It Was A Great Pleasure Serving You The Past Year
And We Look Forward To Be Of Service In 1966 . . .

. . . both at our home office in Hancock and at
OUR NEW FULL SERVICE BRANCH
IN BARAGA, MICHIGAN

☆ THE BANK OF FRIENDLY SERVICE ☆
MEMBER F. D. I. C.



**KIRKISH
FURNITURE**

— Houghton —

Copper Country's *Largest*
Home Furnishing
Center

ED HAAS & CO.

HOUGHTON

Men's Style Center
of the
Copper Country
Since 1883



Detroit & Northern

Savings & Loan
Association

Serving the families
of
Michigan

Since 1889



"Babies Love It"

JILBERT DAIRY, Inc.

CALUMET - ONTONAGON - SKANDIA

GRADE "A" DAIRY
PRODUCTS

Douglass Hotel

featured in the
Douglass Hotel Bar

WEDNESDAY

*Tender Beef
Whipped Potatoes
Rich Brown Gravy
Rolls
Butter
Assorted Relishes*

THURSDAY

*Home-made Fried Chicken
French Fries
Salads
Rolls
Butter
Assorted Relishes*

FRIDAY

Fish Fry

Home of the
HUSKIES' DEN

Swift V&S Hardware

is able to bring
you the

BEST VALUES

for your money because of
its affiliation with 1700 other
V&S Hardware Dealers

When quality counts and when
you want the most for your money
shop first and always
at the

**SWIFT
V & S
HARDWARE**

Houghton, Michigan



Established 1900

INSURANCE HEADQUARTERS
for

M. T. U. Employees and Faculty Members
Since 1900



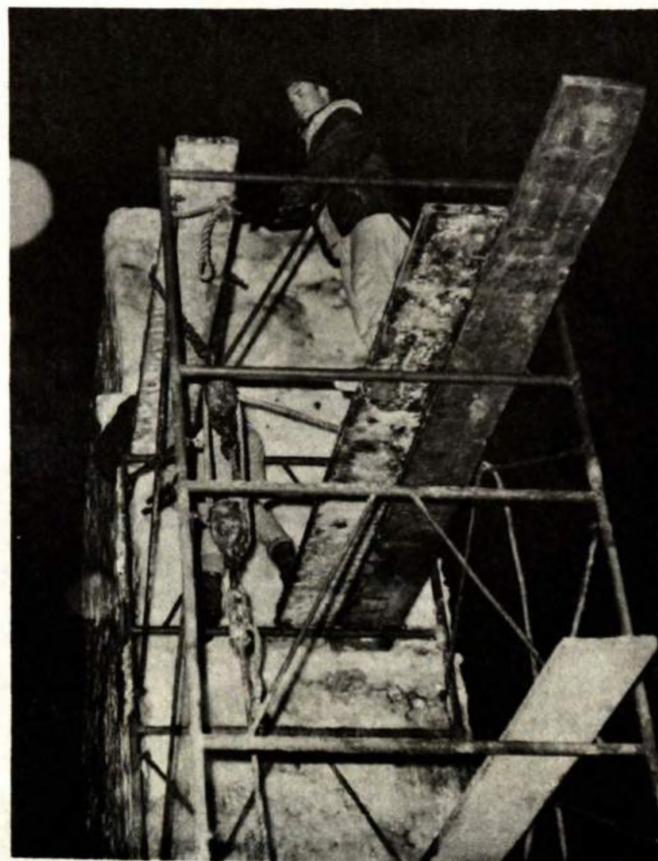
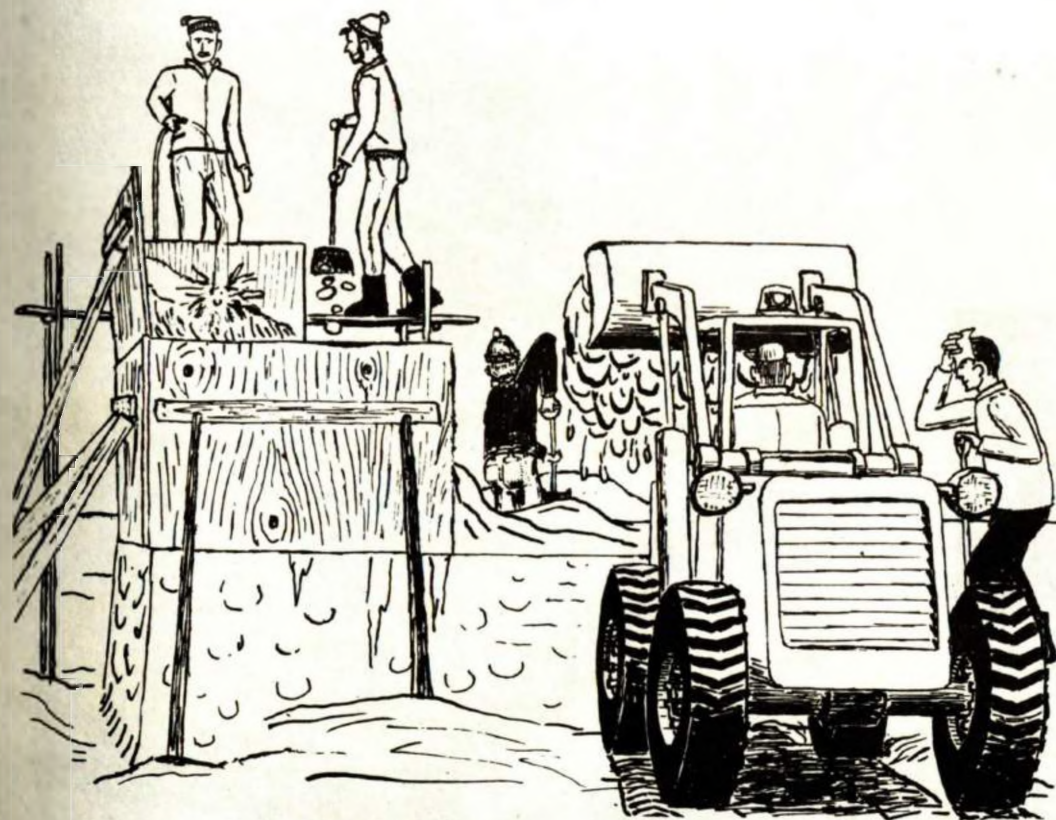
Call **482-3380**
DOUGLASS HOTEL BLDG., HOUGHTON

STATUE CONSTRUCTION ...



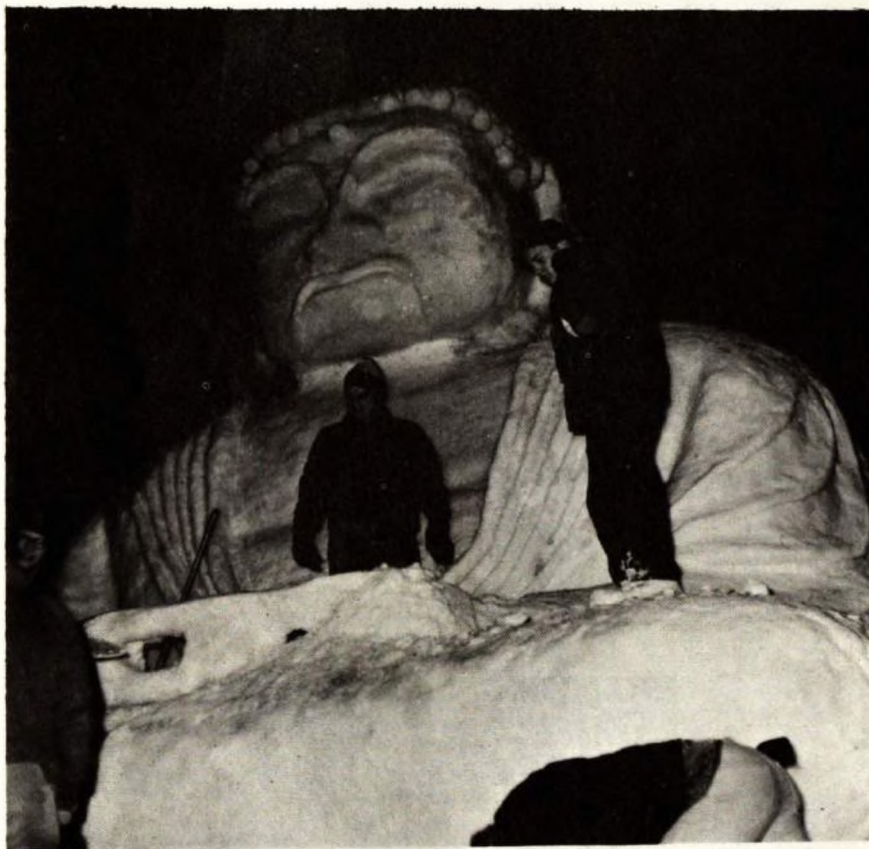
Visitors arriving in Houghton for Carnival weekend, are usually quite favorably impressed with the array of large, intimate snow sculptures presented by the organizations on campus. However, they aren't able to appreciate these statues fully, or know the feeling of accomplishment experienced by the student who participated in the building of one of them.

The following pages will illustrate the work, feeling, and pride that can go into Tech's snow statues. To see a pile of snow develop into something that can be truly beautiful, to labor up to a month, and then with a final all night effort right up to the nine a.m. deadline, see your labors finally completed gives a feeling of deep satisfaction, and sometimes even regret, that the job is finished.





**AFTERNOON, EVENING,
AND LATE INTO THE
MORNING**



"Congratulations Tech on your Winter Carnival"

THE MICHIGAN DEPARTMENT OF STATE HIGHWAYS

offers career opportunities for civil graduates

EMPLOYMENT INTERVIEWS: MARCH 3, 4, 1966

Congratulations from

W G N Televents

wholly owned subsidiary of

**WGN, INC.
CHICAGO, ILLINOIS**

There's more to see on Cable T.V.

4 Channel TV Cable Service

**Best Wishes
for a
Successful
Winter Carnival
and
Sno-Ball**

**It's been a pleasure serving you.
We wish to voice a sincere "thank
you" to all our patrons. Remember
to order flowers often. In any event
Send Flowers.**

The Nissila Flower Shop

**Telephone 482-2060
Hancock, Michigan**

**SHOP
with
CONFIDENCE
at the
Vertin Stores**

VERTIN'S

**Calumet
Houghton
Norway**

O'DONNELL-SEAMEN'S

Ironwood

KLEMM'S DEPT. STORE

Bloomington, Illinois



Complete Selection

- Appliances
- Furniture
- Automotive
- Hardware
- Sporting Goods
- Plumbing
- Heating

*or shop from our
catalog and choose from
130,000 items.*

**CALL 482-0340
Montgomery Ward & Co.**

1966 Winter Carnival
MICHIGAN TECH

CONGRATULATIONS!

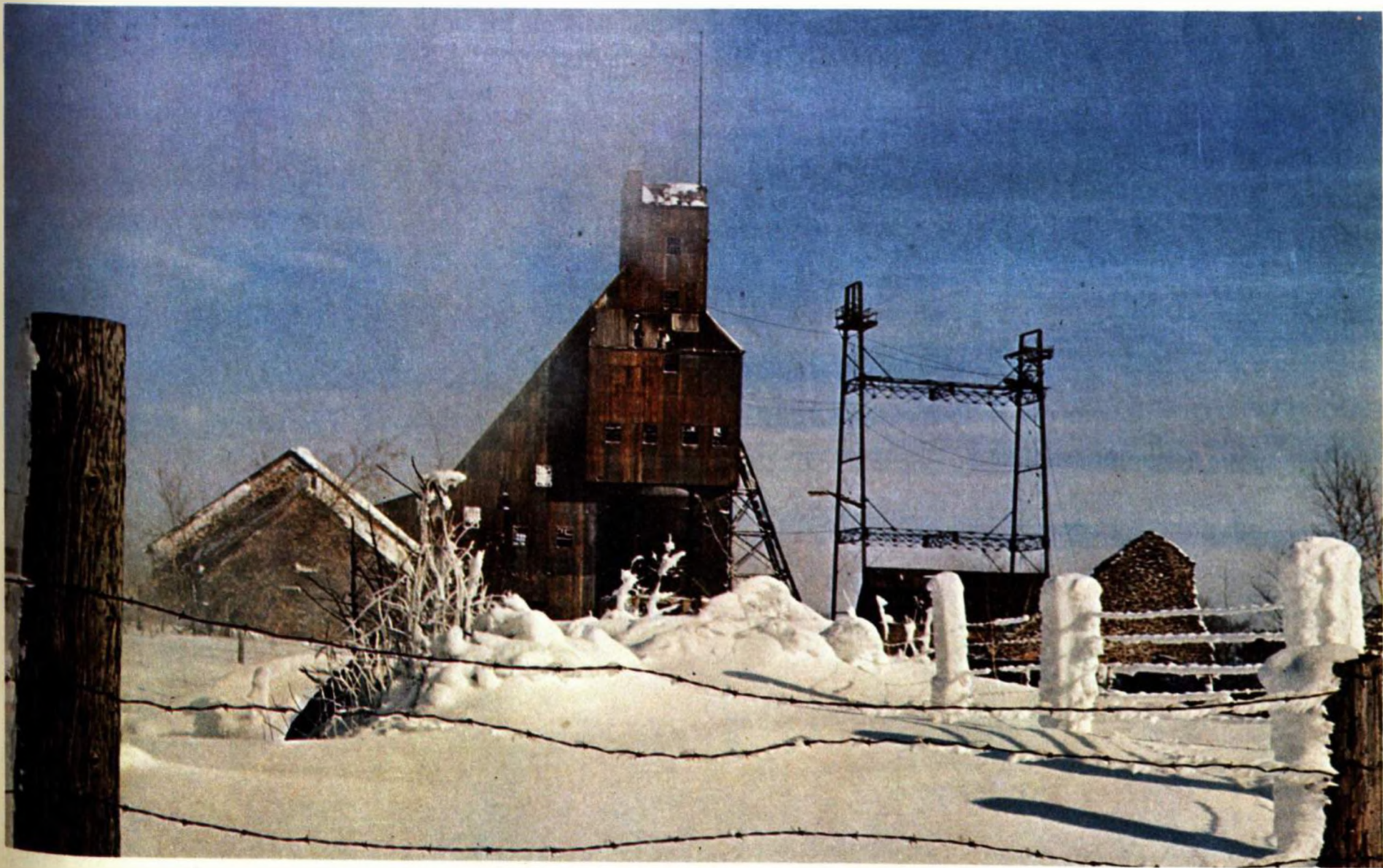


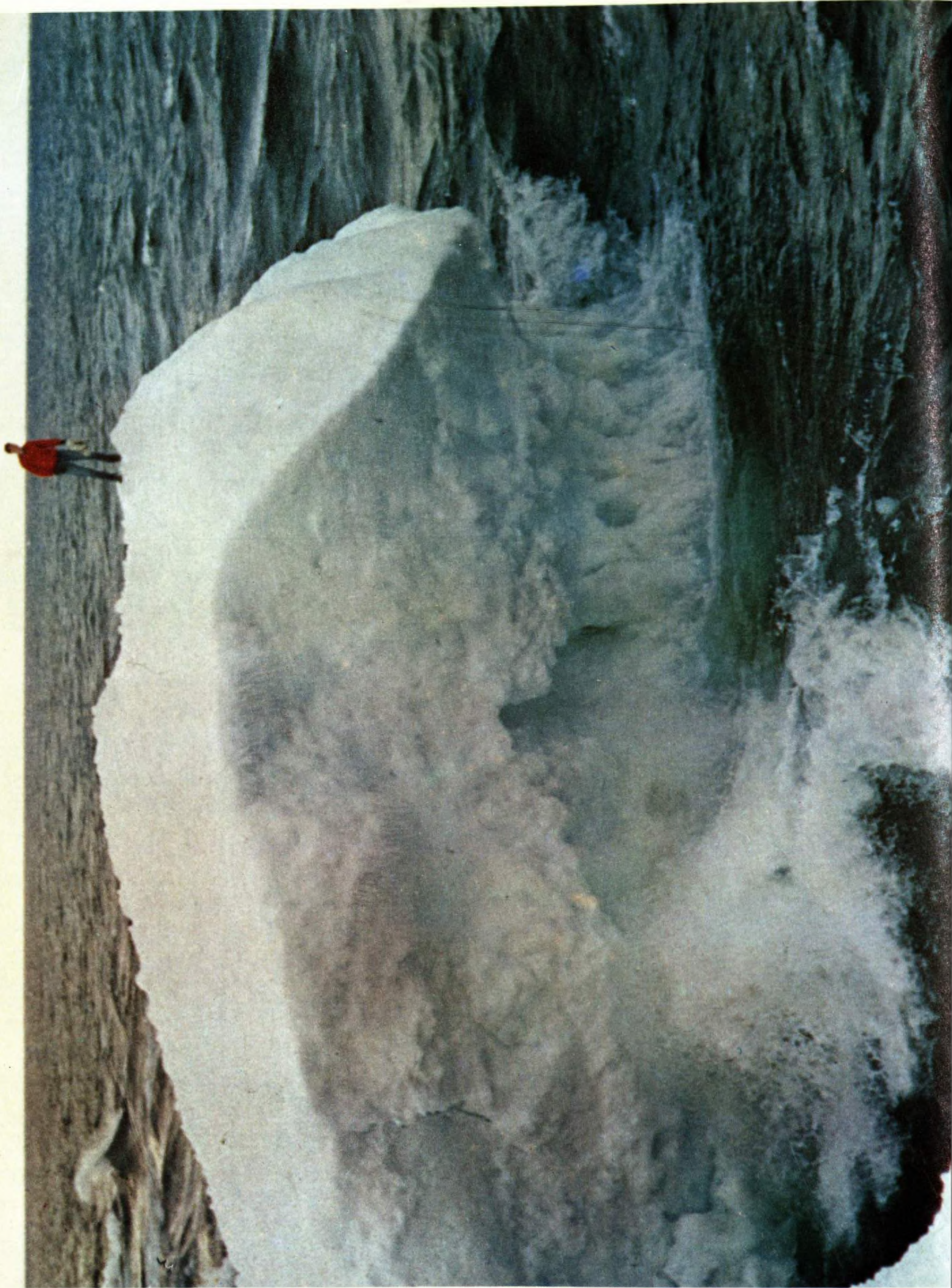
and a
Tip o' the hat
and best wishes
to your

Queen
and
Her Court

*. . . from Reddy Kilowatt and all your
friends at —*

Upper Peninsula Power Company





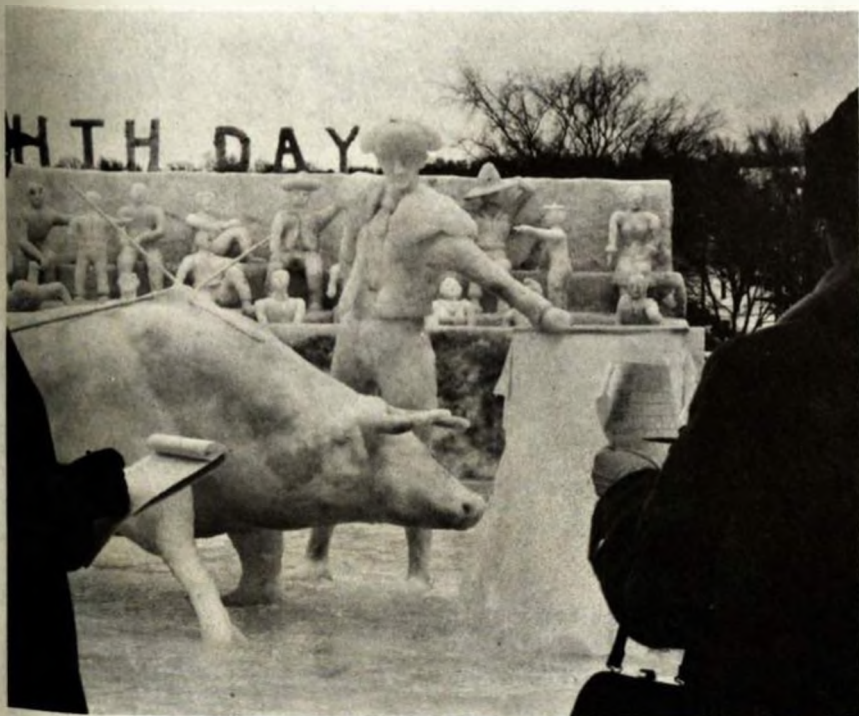


The great snow Buddah by Sigma Rho Fraternity kept a watchful eye over Winter Carnival in 1959.

HISTORICAL REVIEW OF OUR BEST SNOW STATUES

Right: The Carnival theme Bygone Buffoonery produced this two story version of the Old Woman Who Lived in the Shoe. Phrozen Phifh and Sno-House cooperated to take the 1964 first place Class B honors.

Below: The Matador continues unruffled as critics judge his form.



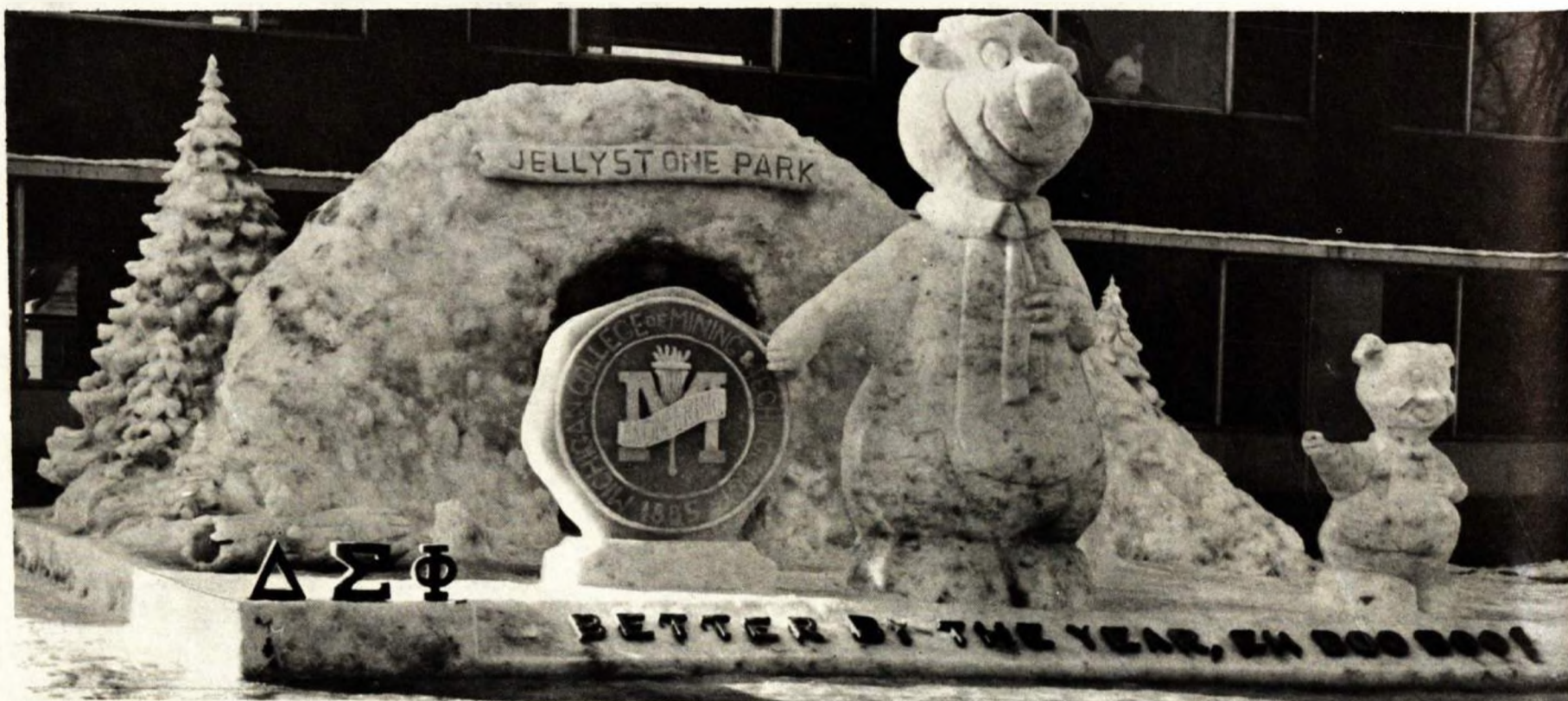


Above: St. George might have taken on more than he could handle with this dragon by the Triumvirate.



Left: Action is stopped in this scene appearing in front of the ROTC building.

Below: Yogi and Boo-Boo appeared in front of the Union in this entry by Delta Sigma Phi.



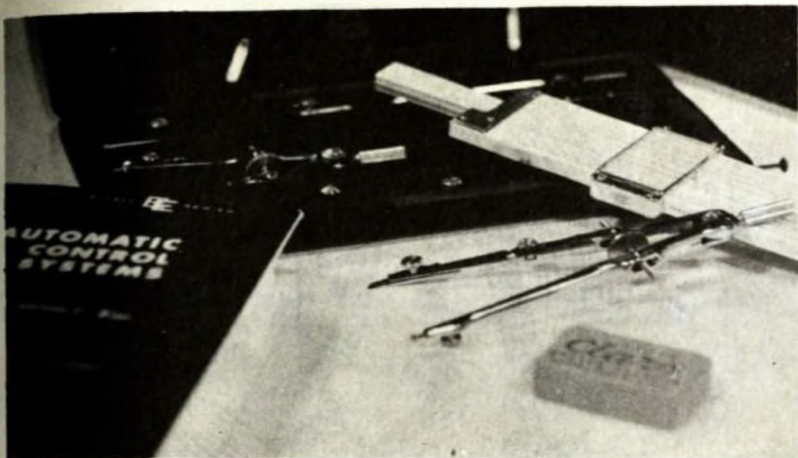
Best Carnival Wishes

from
all of us
at the

E. R. Lauren

BOOKSTORE

books
are
our business



The

Oak Room

For Dining Elegance

Prime Rib of Beef
Thursday



Fish Fry—Friday

We specialize in
STEAK & LOBSTER



The

Oak Room

located at the

Town Pump

For reservations call Calumet 792



Congratulations from . . .

STERN

&

FIELD

HANCOCK

Northwoods

SPORT STORE

SALUTES

1966

Winter Carnival

—Sporting Goods—

Ladies' and Men's

—Sportswear—

for

YOU



RED OWL

Your
Winter Carnival
Food Headquarters!

- ★ Quality Meats
- ★ Fresh Produce
- ★ Wide Variety
- ★ Friendly Service
- ★ Fast Checkouts

Your Friendly
Red Owl Food Store!

twenty-three

"Just Can't Beat That A&P"



CONGRATULATIONS

ON YOUR

Winter Carnival



*Nelson's
Restaurant*

Houghton

Very Best Wishes

for a fine

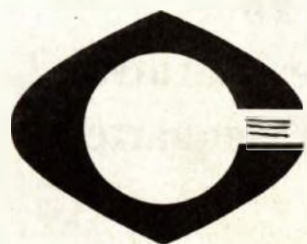
WINTER
CARNIVAL

NEWBERRY'S

HOUGHTON

Northern Auto Service

625 Quincy — Hancock, Michigan



Chrysler



Plymouth



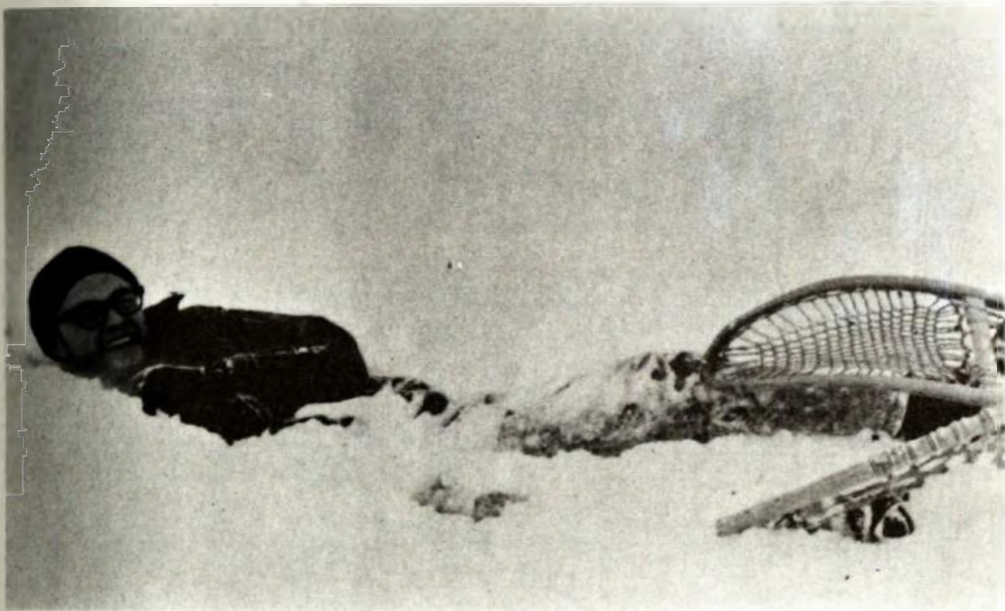
Valiant



Our Congratulations
to
Blue Key Fraternity
on a
SUCCESSFUL
WINTER CARNIVAL

*"We service what we sell . . .
and other makes as well!"*

SPECIAL EVENTS



Many entrants in the snowshoe event are left behind when they discover that high speed navigation with snowshoes can be very tricky.



The snowshoeing event is divided into cross country and relay races. In looking back over the course after the race has been run, many unsuccessful entrants can be spotted as they attempt to regain their feet in the deep snow.



The dogsled event is probably the most difficult special event of Carnival. In this event, a sled with four men aboard, and one behind, the musher, is pulled by six "dogs." The course is approximately half a mile long, and is sometimes made even more strenuous when the roads it is run on have been sanded.



Perhaps the best indication of the difficulty of the dogsled event is reflected in the faces of its participants. Here one of the "dogs" pauses, exhausted, after the run from the Hamar-Quandt Company to Dee Stadium.



Ski Coach Lonsdorf directs the layout of slalom course for skiing events.



Around the turn, the lead skater strains to lengthen his lead.



Skaters take their mark at start of skating event.





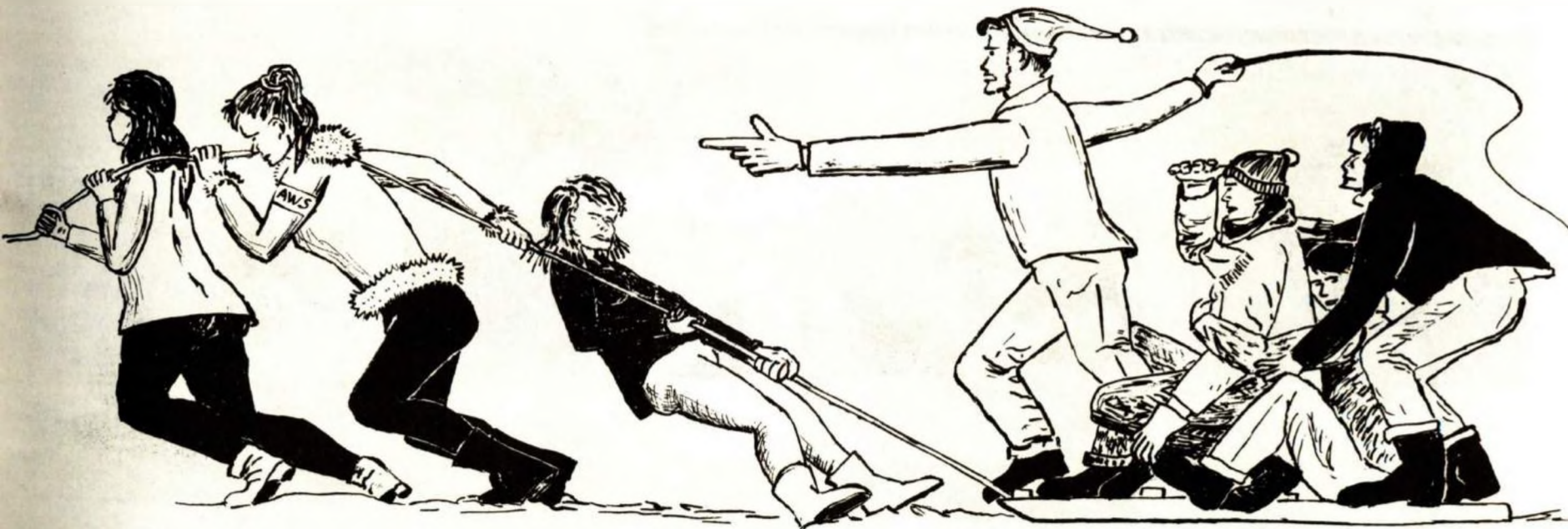
A contestant pushes for extra speed as he crosses the finish line.



A skier cuts through gates in the slalom event.



Some of the deep powder snow managed to find its way into this skier's beard.



DELT SIGS FIRST IN OVERALL CLASS A COMPETITION

DHH FIRST CLASS B



CLASS A

	Snow Statue	Stage Revue	Skating	Snowshoeing	Skiing	Dog Sled	TOTAL	
Beta Sigma Psi	10					1	11	
Delta Sigma Phi	15	15	1/2	1 1/2	1		34	1ST
Forestry Club				1 1/2			1 1/2	
Independents								
Kappa Delta Psi			3			2	5	
Newman Club								
Phi Kappa Tau		10			1	3	14	2ND
Sigma Phi Epsilon	5						5	
Sigma Rho								
Theta Tau		5	2	3	3		13	3RD
Triumvirate			1/2		1		1 1/2	

CLASS B

AIME-ASM	5		3	3	3	1	15	2ND
ROTC				1	1	3	5	
ASCE	10						10	
Phrozen Phifth - Sno House		5	1	2	2		10	
Douglass Houghton Hall	15	15	2			2	34	1ST
Wesley House								
Tech Wives		10					10	
Newman House								



HUSKIES TOP BULLDOGS



Michigan Tech took the first game of the Winter Carnival series against the University of Minnesota-Duluth at Dee Stadium by the score of 5-2. 1,855 fans turned out to see the high-flying Huskies defeat the Bulldogs for the third time in three meetings thus far. Fred Hall was the scoring leader, getting two goals, followed by Ricky Yeo, Jerry Bumbacco and Wayne Weller, each getting one.

Tech showed its power by forechecking well throughout the three periods of play. However, the Huskies were caught for several miscues, collecting 12 two-minute penalties, as against six minors for UMD. Although playing shorthanded, the Huskies displayed some fine exhibitions in skating, passing and scoring to down the opponents.

At 4:00 p.m. the line started to form for concert tickets that were to be sold at 8:00 a.m.



MITCHEL TRIO AND GODFREY CAMBRIDGE IN CONCERT

The Mitchell Trio and Godfrey Cambridge arrived on campus early Friday afternoon. When one of the Pictorial photographers spotted them, he was able to persuade the entertainers to let him take pictures of their informal tour around campus.

Godfrey Cambridge was impressed with the size and quality of the statues, but since he didn't think his wife would believe his description he asked for a few of the following pictures to prove his point to the people back home.

The members of the Mitchell Trio put everyone at ease with their outgoing manner, and were pleased to talk with students during their afternoon on campus.

About the concert, there is not much to be said. The gym was packed and hot, but the crowd was very responsive to the Mitchell Trio's repertoire of serious to satirical songs. Godfrey Cambridge had the audience in a continuous uproar during his portion of the program. In short, those who missed the concert lost a chance to see some of the best entertainment that the Student Council has ever brought to Tech.





In the concert finale, Godfrey and the Trio reach the height of integration with Godfrey in Ku Klux Klan robes.



Right — When the guys asked the girl at the top if she was a student here, she replied "Of course not."

CONCERT ATTENDED BY CAPACITY CROWD, CONSIDERED GREAT SUCCESS



Left — Godfrey and the Mitchell Trio clown with students at Beta Sig's Colosseum.

Lower, left — Godfrey asked, "Do you want to see me do Sampson?"

Below — Intermission finds the Mitchell Trio and Godfrey relaxing backstage.



TALL TALES TOURNEY

Editor's Note:

Due to the large number of entries, only a sampling of Tach's best stories can be presented here.

The Filthy Five

It was Hunting Season about four years ago when a friend of mine nicknamed Jontunbumpä invited me to come to stay at his hunting camp for a whole week. I hadn't had any special plans for the hunting season so I figured that, boy this is a real good deal. So I accepted.

When I arrived at the campsite it was almost dark, but I noticed that the camp had recently been moved. The reason for this, I found out later, was that there were so many empty beer cans and wine bottles around the camp that it was hard to get near it anymore. The piles were so large that it was easier to move the camp than to clean them up.

When I got to the camp there was just enough light left for me to notice a sign across the top of the door. It read "The Filthy Five," and did those guys ever live up to their name. I threw open the door, stepped inside, and the first thing I noticed was a half eaten deer carcass lying across the kitchen table. Standing by the pot-bellied stove was Jontunbumpä heating up a dirty old frying pan.

He mumbled hello, staggered over to the deer carcass on the table, lifted back the hide, pulled out his hunting knife, cut off a good sized slab of meat, staggered back over to the stove, and went on to cooking his meal. I can still see that deer's head just hanging over the edge of the table, glassy eyes, tongue hanging out, and a big pool of blood on the floor beneath it's nostrils—and when he had invited me he said: "Don't bother bringing any food along."

The floor was so dirty that I walked along what looked like a snow shoveled scraped path into the next room. And there were the other four of the Filthy Five drinking beer and playing cards. They acknowledged my entry with a can of beer, so I just sat down and watched them.

Finally it was time to go to bed, and one thing I must say for these guys is that they have a set of camp rules. One of those rules was that the last man into bed had to shut the lights off, which were two lanterns hanging from the ceiling. The last one into bed was Intumberi. I looked down from the top bunk and wondered what in the world is he going to do now. He was so drunk and crazy with liquor that he was getting into bed with his double barreled shotgun. He popped in two shells, pulled the hammer back, and blasted both lanterns right off the ceiling. As I lay there, trying to sleep, I heard one of the men mumble "Well at

thirty-two

least he abides by the camp rules."

When I got up the next morning I stuck my head out from underneath the covers and saw Hölynbölyn stoking up the fire with old papers. Still bleary eyed and half in the bag he accidentally threw in an almost full box of loaded shot shells. When the fire started burning good the shells started going off in succession and blew the lids, stove pipes, and the door right off the stove. Hot coals, black soot, ashes, and BB's were flying all over the camp.

After things settled down I got out of bed to check around and noticed that one of the red coals had landed right on the shoulder-seam of my brand new hunting jacket and almost burned the sleeve right off. I picked up my jacket, my packsack, and my deer rifle, walked over to the door and said: "Thank you, Gentlemen, for two nights—the first and the last."

Matti's Lumber Camp

One hot day last summer, I went to the local tavern to wash down the dust from working all day in the mines. As I sat down at the table with my glass of refreshment, I overheard Old Joe telling a tourist about the good old days and the time Matti Hubbellainen built his lumber camp.

Old Joe scratched his whiskers, thought a second, and then said, "I reckon it was in the year 1880 that Matti came to the Copper Country to go into the lumber business. He bought some land down by the canal—about 200 acres, if I remember right. I remember him standing on top of the hill, looking over his land, trying to figure out where he was going to build his camp.

"Well, he picked a spot at the bottom of the hill in a small clearing. He wasn't much of a construction engineer, but he had the strength of an ox when it came to hauling heavy logs.

"He started by chopping down the finest fir trees on his land. By this time, Matti had a hired hand, Urho, and they trimmed the branches from the trees. After this was done, Matti was faced with a problem. He didn't have a horse to get the logs down the hill to the clearing. He sat down to think, and after an hour, he jumped up with a brilliant idea. He said, "Seeing as how we have no horse, we will carry the logs ourselves."

"For three days, Matti and Urho finally carried enough of the heavy logs down the hill to build the camp. Both men were exhausted as they sat down to take a rest. Urho thought a while, and then he told Matti, "We would have saved a lot of work if we had rolled the logs down the hill." Matti agreed, and without another word spoken, both men started carrying the logs back up the hill so that they could roll them

down. Three days later, the logs were rolled back down the hill and piled up again. Matti was very proud that they had saved so much time by rolling the logs down the hill.

"The next day, Matti and Urho returned to the campsite and started to build the camp. They cut the logs and placed them on top of each other until all four walls were built. For two days, they sawed the logs into boards to make the roof. When the roof was completed, the top of the structure stood 40 feet high. He was very happy that it was completed, but Urho was puzzled because there were no doors or windows on the building.

"Matti wasn't worried about the problem of doors. He grabbed a saw, and in ten minutes, there was a nice tall door in the front. Quickly, Matti grabbed a bucket and carried enough light inside so he could clearly see his work of art. He then made large rooms inside so that he could store the buckets of frozen light that he collected during the wintertime.

"The next summer, Matti became disgusted with just a log building, so he piled rocks around it clear to the roof, for what he called 'added beauty'."

It was then that Old Joe leaned back in his chair and scratched his beard again, "Yes," he said, "Matti is gone now, but his building is still here. Folks named the building after him, bless his soul. But as folks moved in from all parts of the country, the name was changed so people could pronounce it. Yes, they changed Hubbellainen Hall to Hubbell Hall. That's how it stands today."

Dear Uncle Aesop

I was not doing anything today, so I thought I would write to you and tell you about my college life. Because I have not written to you since I left home in the fall, I will tell you about what has been happening since then.

As you know I left Chicago on the fifteenth of September with twenty-seven other guys who were coming here to school. The train ride was very comfortable and it seemed like the train virtually flew over the tracks. We were greeted at the terminal on the eighteenth by the Dean of Students. He showed us around the town and personally escorted all of us to our luxury quarters in Douglass Houghton Hall.

This wonderful residence hall is practically beyond description. All the hallways are lined with a choice grade of fir paneling. In the many lounges are located all the latest magazines for our reading enjoyment. Some of the outstanding decor of my own room consists of pile carpeting on the floor, pictures of modern art on the walls, a refrigerator on the windowsill during the winter, and more studying space than I will ever use. Our great cafeteria is located only a few steps from my door. It serves some of the most fascinating food, the likes of which I have never seen before. It would be impossible to get food prepared like this in the best restaurants in Chicago.

continued on page fifty

MICHIGAN TECH PROGRESS

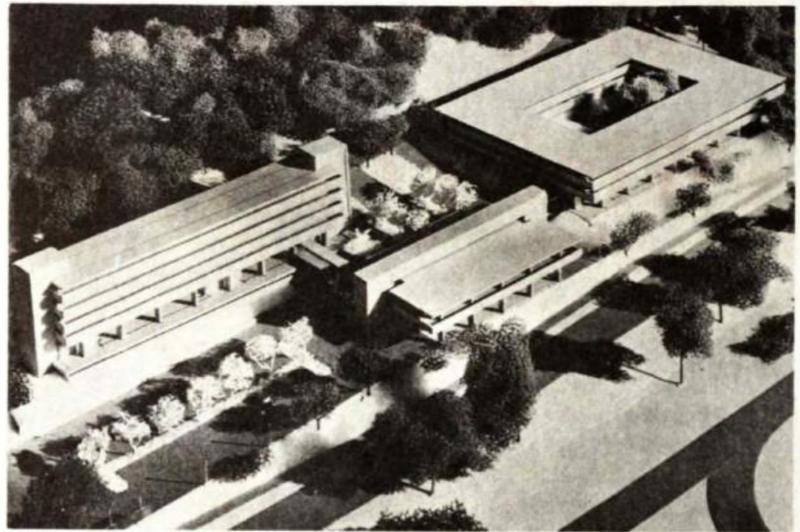
Many things go into the making of a University. 1965-66 has been a year of intensive planning and building, all aimed at developing a greater Michigan Tech.

Long-range academic and building need studies, based on an eventual enrollment of 10,000 students have been completed.

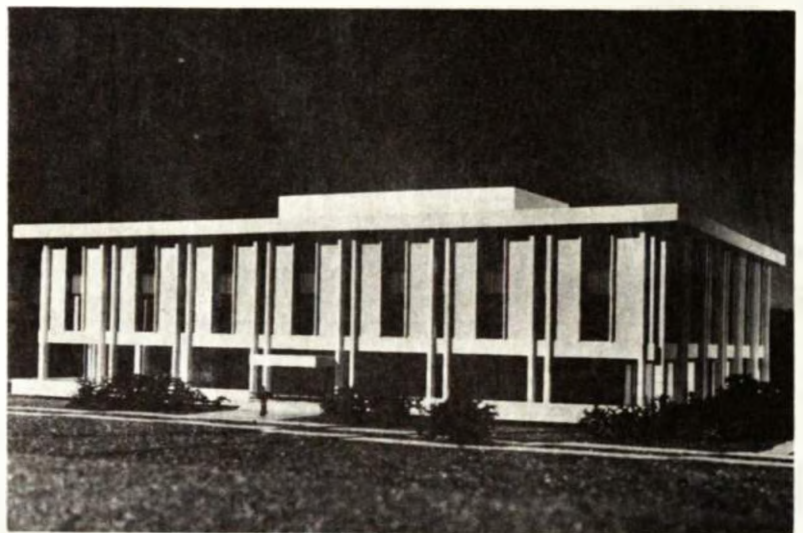
During 1966, five major construction projects will be under way on the campus at Houghton. These buildings are the first of many which must come as the University grows to meet the needs of the state and nation for high level science and engineering education.

Michigan Tech's research program has also been growing rapidly, and has topped \$1 million in dollar volume, a growth of more than 960% in ten years.

Michigan Tech looks to the future with renewed confidence, based on its steady growth in service to the people of Michigan.



Coed Residence Hall Complex



New University Library



Forestry—Institute of Wood Research

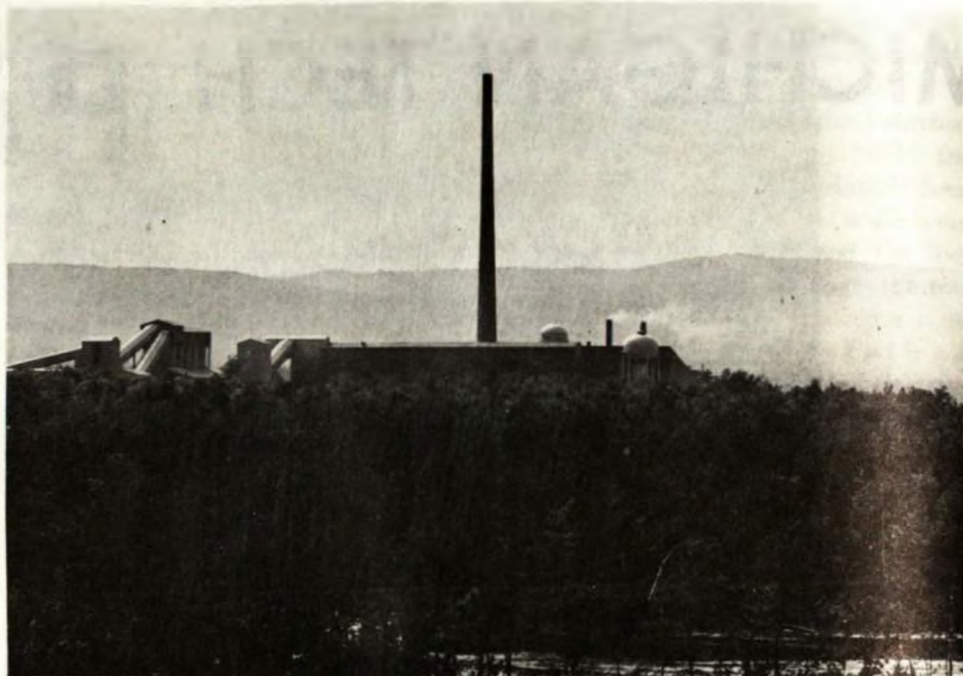


Model of Tech's Campus of the Future

MICHIGAN TECH

A Leader in Engineering and Science Education Since 1885

Best Wishes For A Successful Winter Carnival

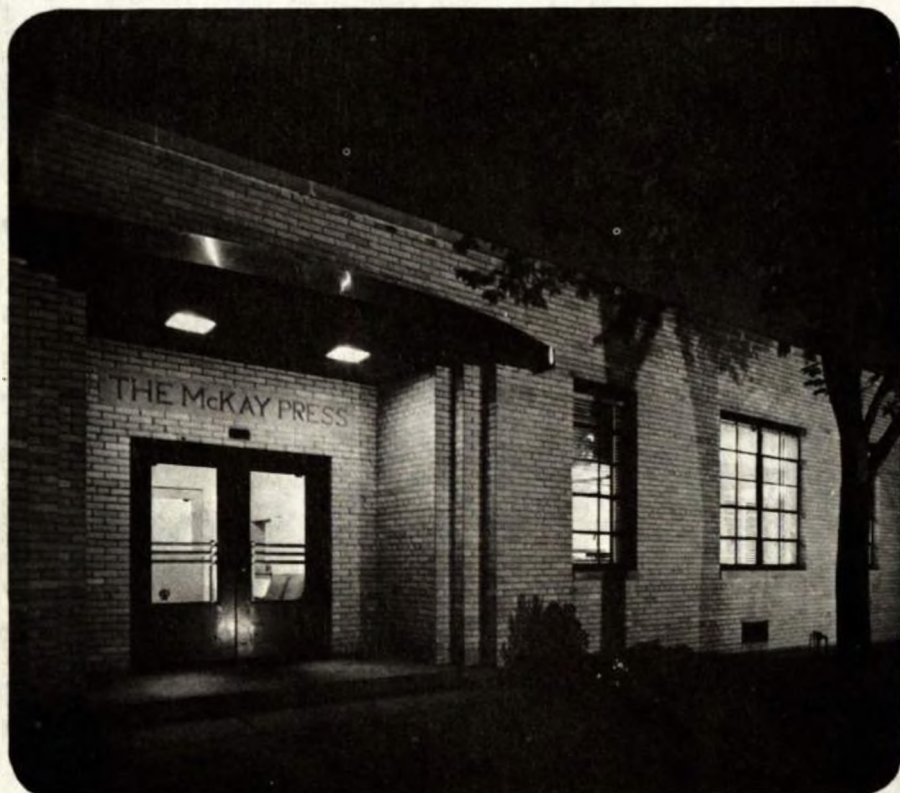


*White Pine plantsite with Porcupine Mountains
in the background.*

WHITE PINE COPPER COMPANY

WHITE PINE, MICHIGAN

A DIVISION OF COPPER RANGE COMPANY



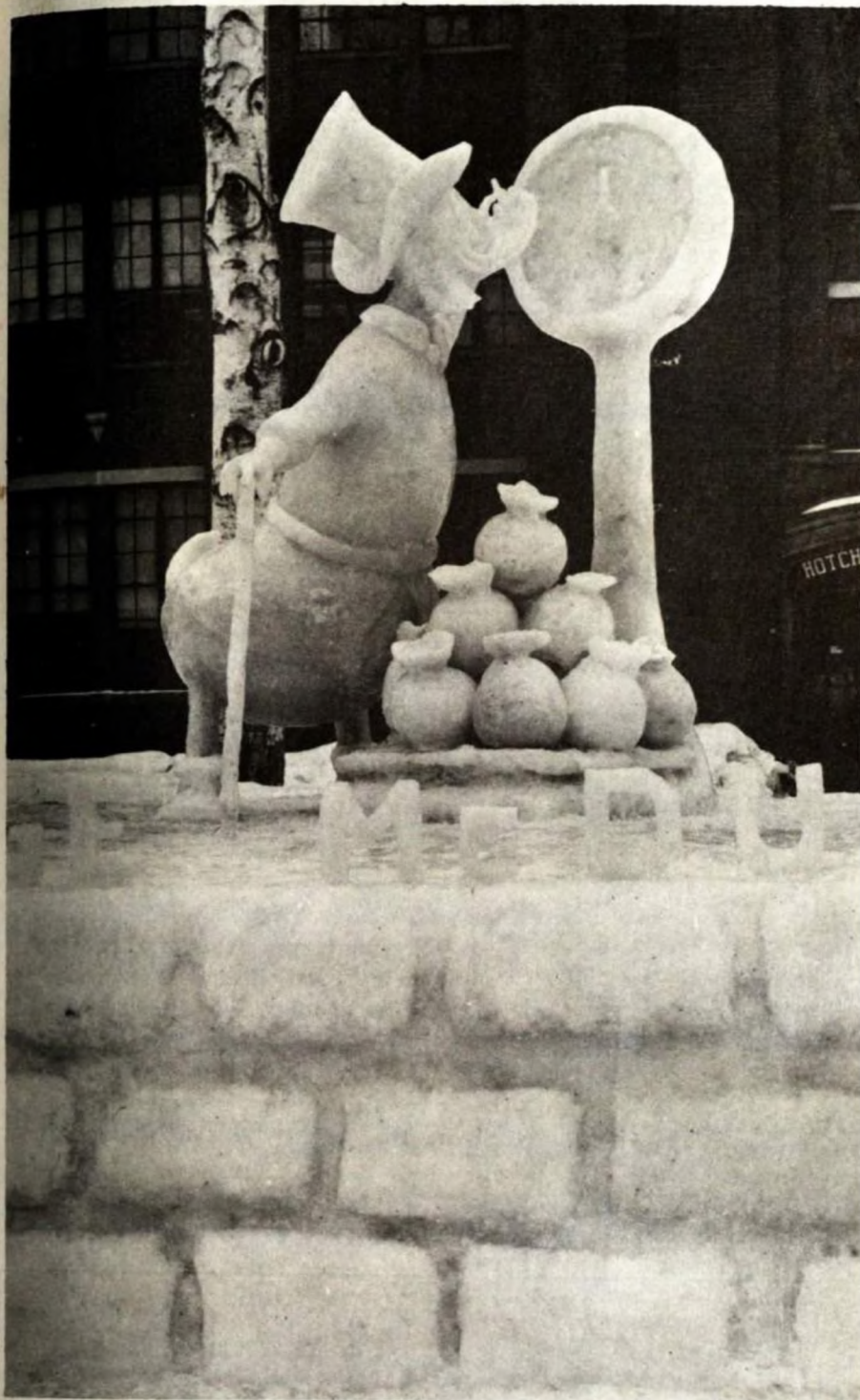
*The Doorway
to
Fine Printing*

One of Michigan's finest printing facilities offering complete services in layout, art, type composition, camera and negative stripping, plate making, printing, bindery and mailing — all under one roof.

The McKay Press Inc. Midland, Michigan

Quality Printing in four colors or one

FROM THE PAST



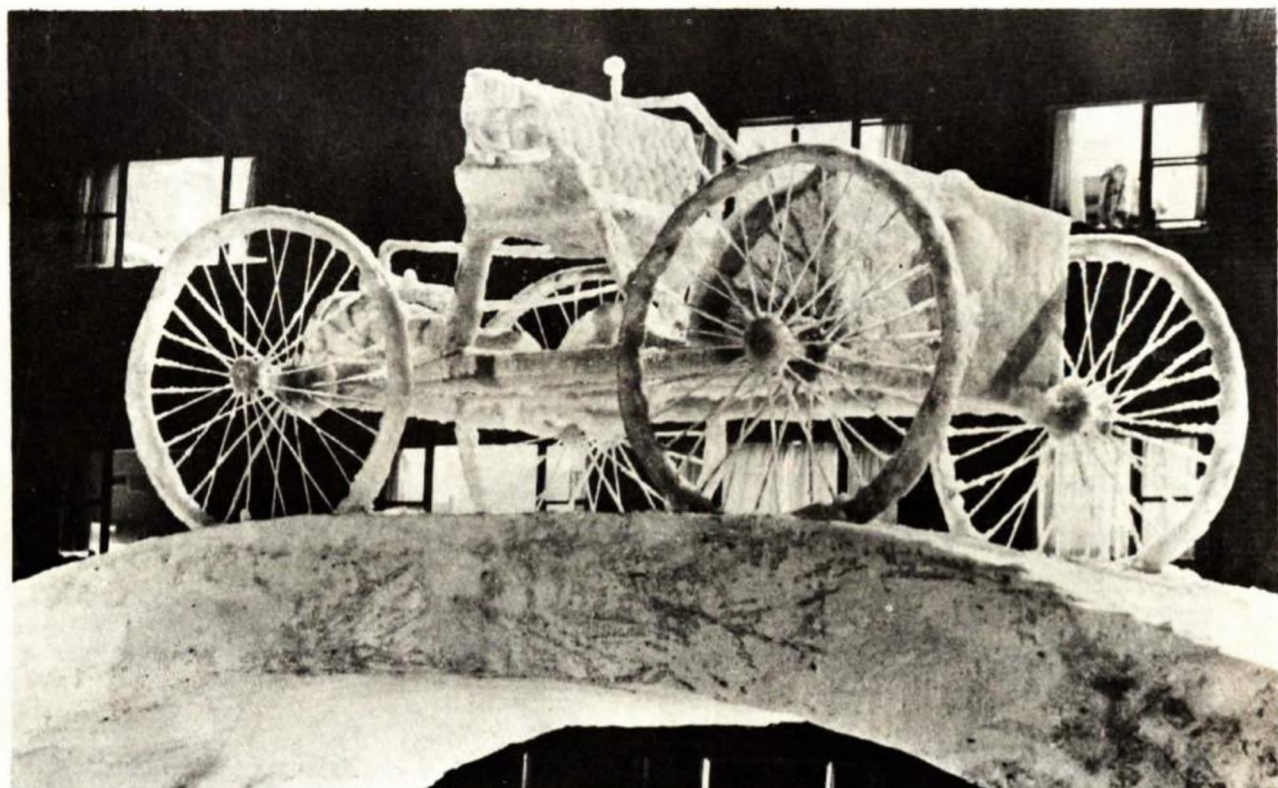
Uncle Scrooge weighs his money in front of McNair Hall.

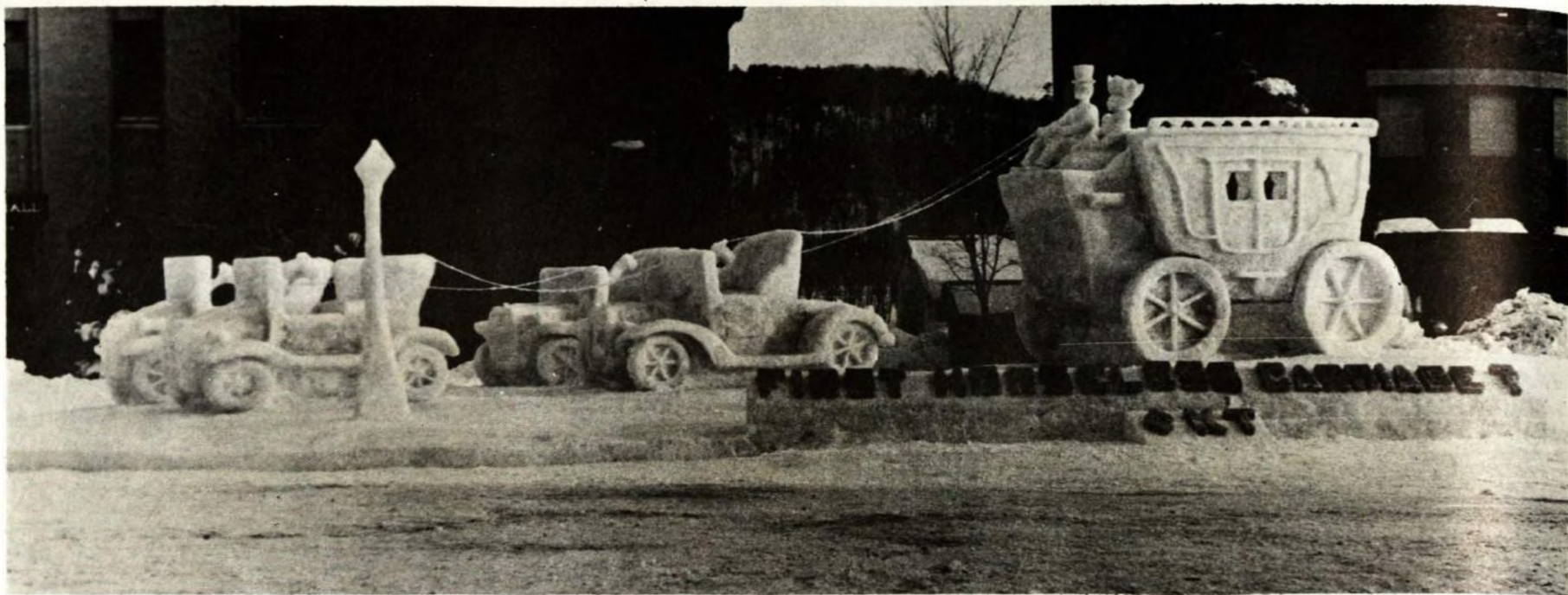


Top: Phi Kappa Tau presents the choice to be made in world relations.

Above: Kappa Delta Psi constructed a huge statue of Rip Van Winkle. This took first place in 1964.

An early horseless carriage appeared in front of Wadsworth Hall. Were those spokes really made of ice?

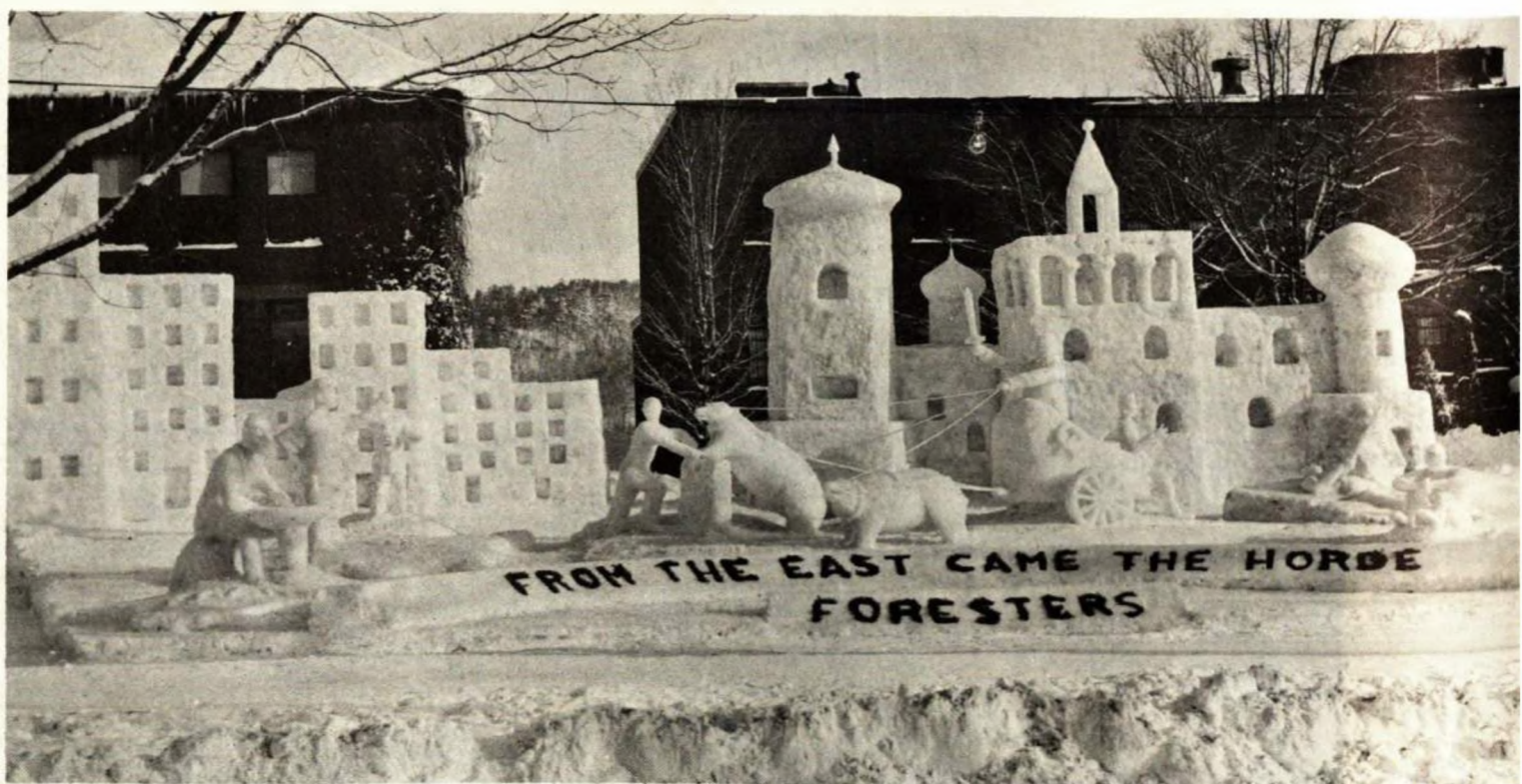




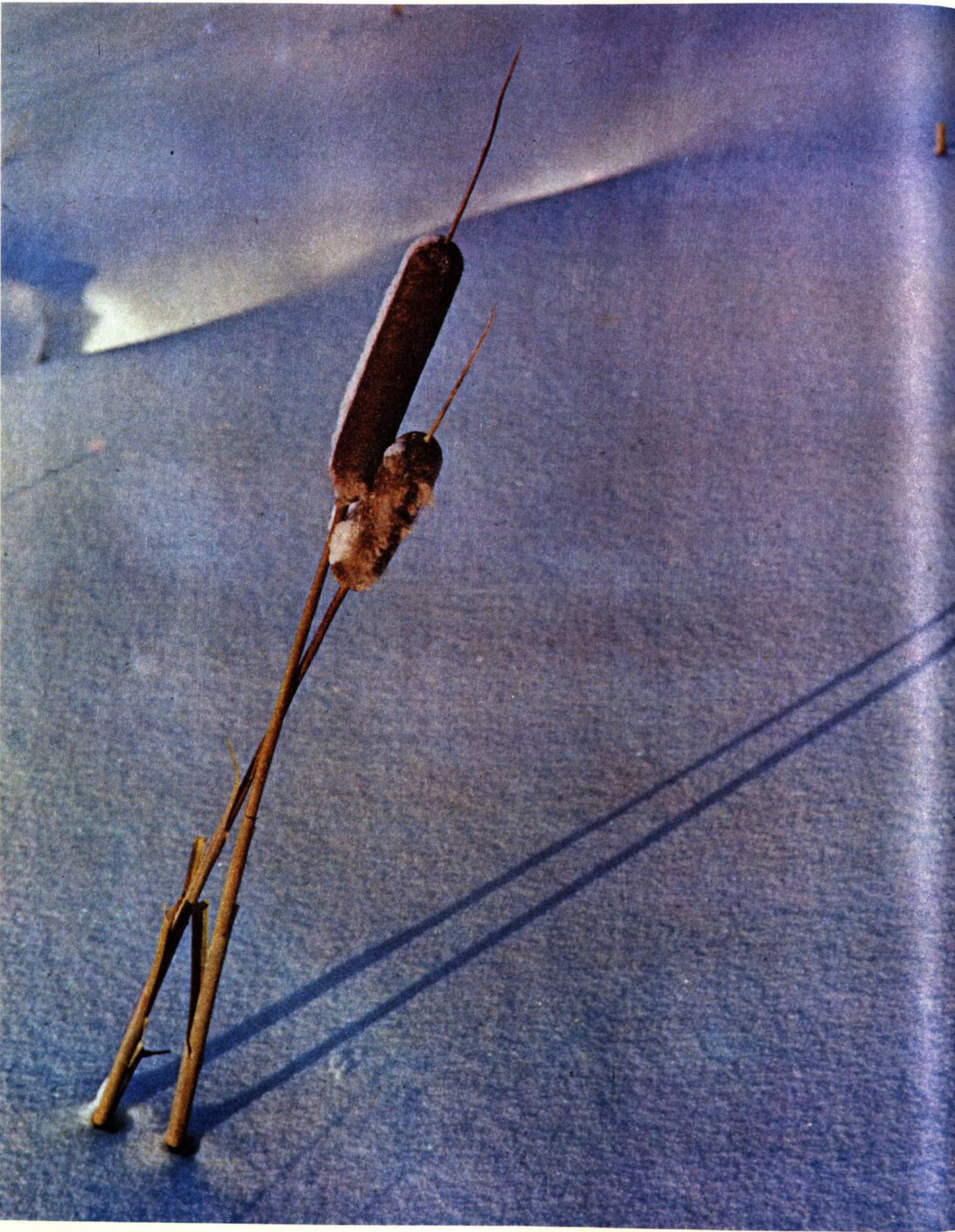
Above: Phi Kappa Tau took a first with their "First Horseless Carriage." Bygone Buffoonery was the theme.

Left: Little Red Riding Hood is the basis for this scene presented by Beta Sigma Psi.

Below: An interesting view of U. S. foreign policy is presented by the Foresters.







The College Life Insurance Company of America

The Original and Only Company
Specializing in Insurance for
College Men...

represented only by college men...

selling exclusively to college men.



Home Office
College Square at Central Court South
Indianapolis 5, Indiana



Art Anderson
Local Representative
322 Shelden — Telephone 482-2041

*"Buy Where You
Benefit Most"*
THE COLLEGE LIFE
INSURANCE COMPANY OF AMERICA
INDIANAPOLIS, INDIANA

Member: American Life Convention
Life Insurance Agency Management Association

**Sanders
Candies**
of Detroit

**CROWN
BAKERY**

HOUGHTON, MICHIGAN

**FREE
Delivery
Service**



**come
alive!**

**you're in the Pepsi
generation!**



PEPSI COLA BOTTLING CO., Houghton, Michigan

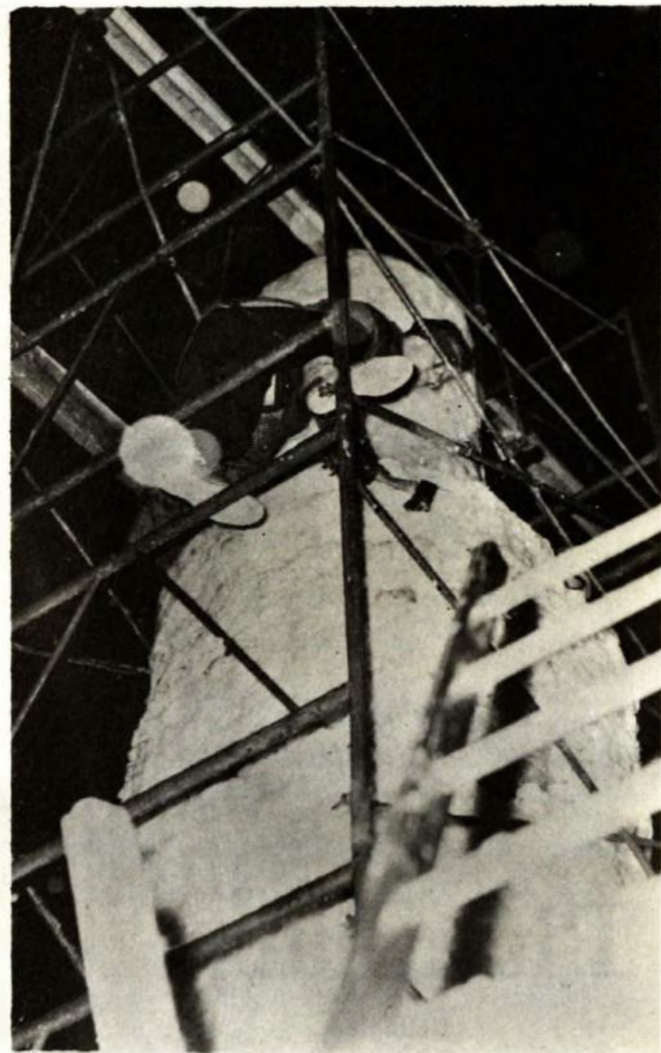


Buried under a century of snows
are many dreams that are the romance of the Copper Country.

A part of our own romance of nearly three-quarters of a century has been the recording in printed word, in many forms, the activities of those with whom we have had the privilege to grow—even as we have with Michigan Tech.

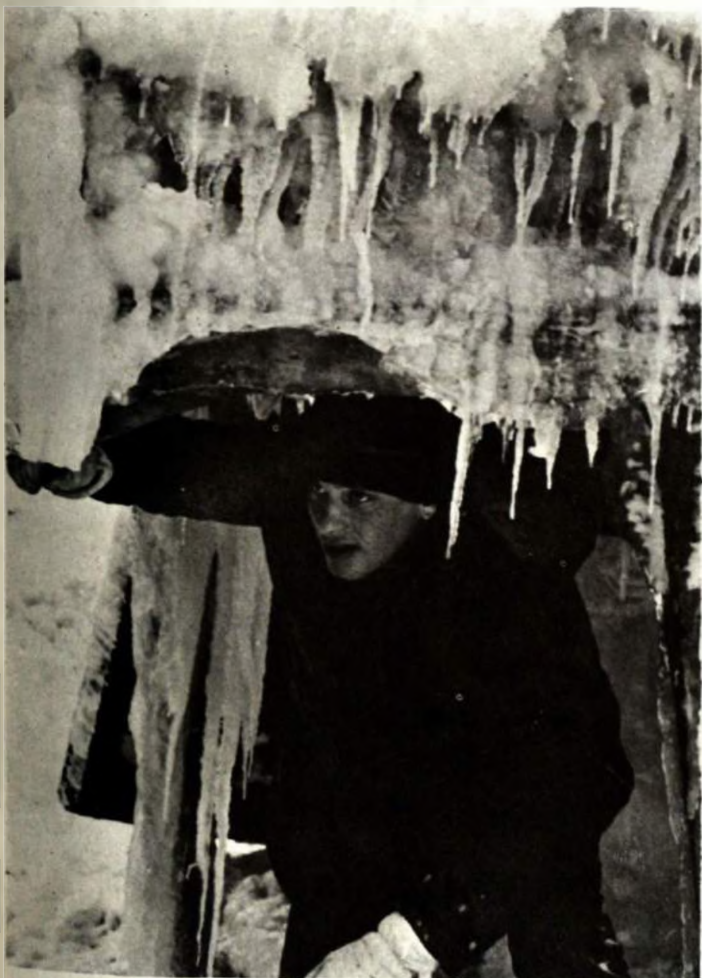
THE BOOK CONCERN

129 FRANKLIN ST. *printers* HANCOCK, MICH.



AND FINALLY THEY ARE DONE

continued on page 41



Congratulations Tech

on your

Winter Carnival

*Come in and see our large
selection of
Pipes and Tobaccos*

*Men's Toiletries
Jade East — English Leather*

Roy's Pharmacy

Reliable
Prescription Service

Roy R. Monette, R.Ph.
James E. Monette, R.Ph.

YALMER MATTILA

*General
Contractors*



RESIDENTIAL • COMMERCIAL

CONCRETE

- BUILDING
- EXCAVATING
- MASONRY CONTRACTING

TRANSIT-MIXED
TRUCK & HEAVY EQUIPMENT
RENTALS

FOR TRANSIT MIX CALL 482-5470

CHURCHES - SCHOOLS

PROFESSIONAL PLANNING ARRANGED

Call **482-5450** If No Ans. Call Operator
(Long Distance)
Trivola 1-F3

55 NORTH HURON • HOUGHTON

CENTRAL

Downtown Super Market Houghton

Delivery Service • Phone 482-1040 • Open Evenings

South Range State Bank

Congratulates

Michigan Technological University

on a fine

WINTER CARNIVAL

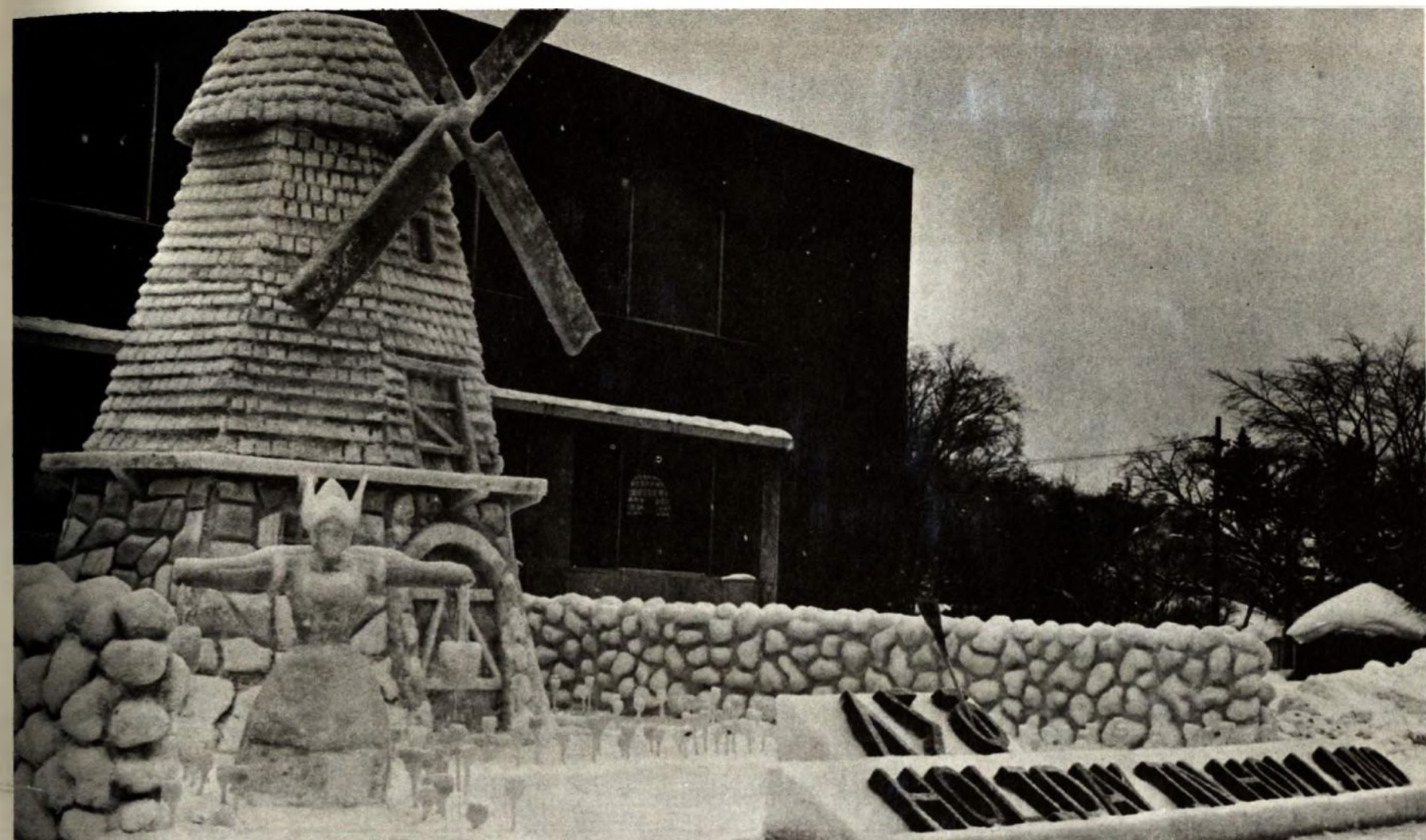
COPPER THEATRES

LODE

Houghton

PIC

Hancock



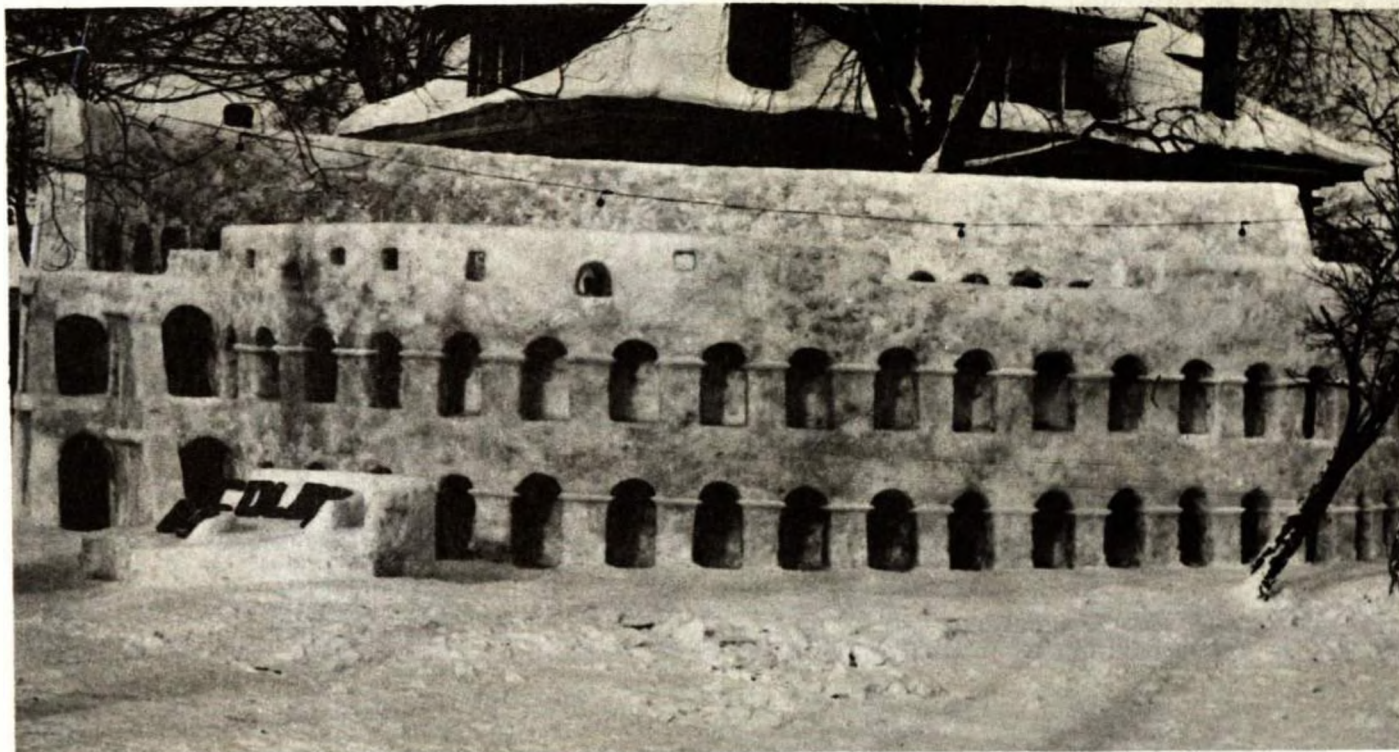
A unique approach to the national realm of famous sights is represented in Delta Sigma Phi's "Dutch Windmill."

DELTA SIGMA PHI TAKES 1st CLASS A

D. H. H. 1st CLASS B

This Mayan Temple built by Douglass Houghton Hall brings a little of Central America to Tech.



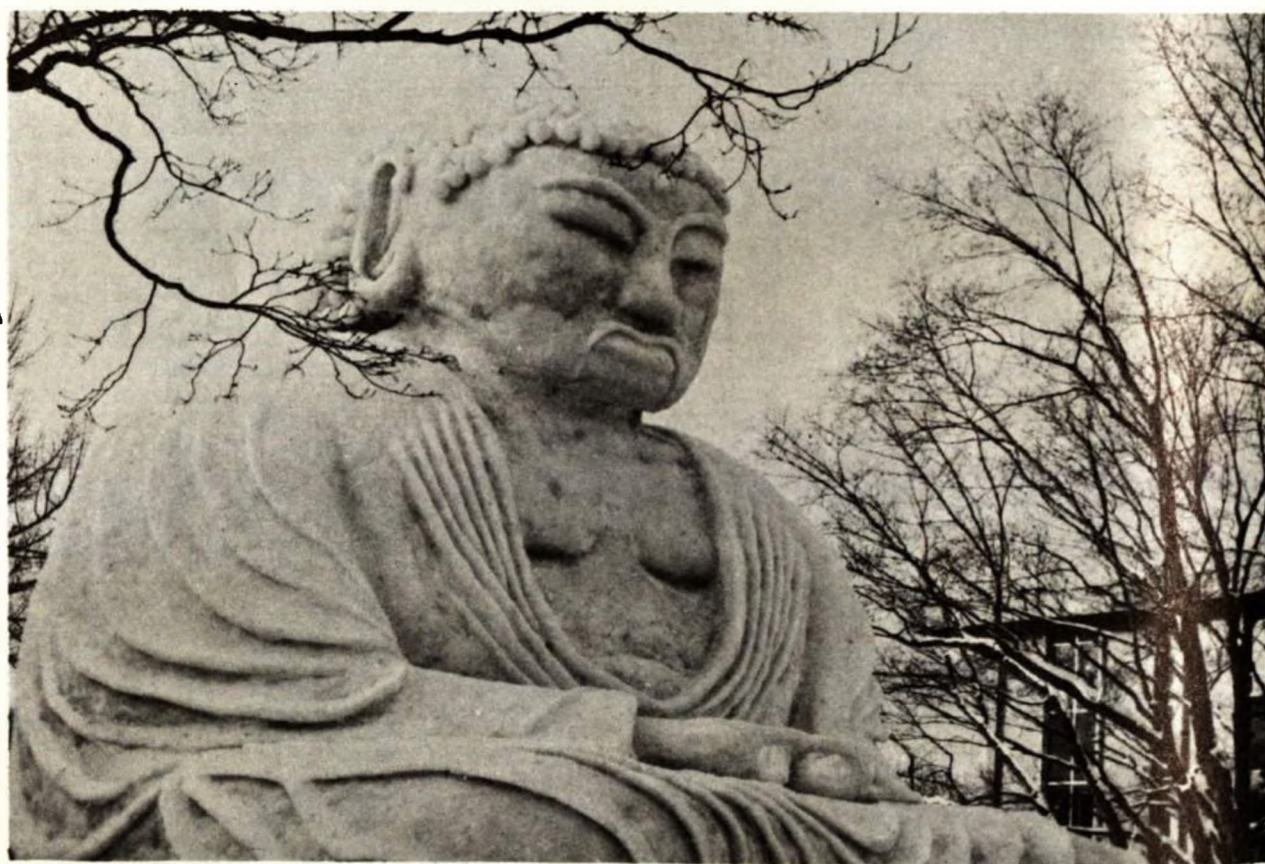


2nd CLASS A

The days of the Roman Empire are brought back in full splendor in Beta Sigma Psi's Roman Colosseum.

3rd CLASS A

Mammoth size and clear attention to exacting detail characterize Sigma Phi Epsilon's "The Great Buddha."



2nd CLASS B

ASCE spent long hours to build their "Sphinx." This ancient Egyptian image is in the form of a recumbent lion with a lion's body and the head of a man.



3rd CLASS B

A replica of the exquisite "Mermaid on the Rocks" was formed by ASM-AIME in precise detail to catch the eye of any art lover.



A picturesque display of "Europe in Ice" is provided by Sigma Rho Fraternity. The statue—comprised of six individual statues representing separate European countries—is centered around a Roman fountain.

The Forestry Club felt France's "Arch of Triumph" best represented the spirit of this year's Winter Carnival theme.



The insignia of the Army Corps of Engineers is carved in ice by Army ROTC.



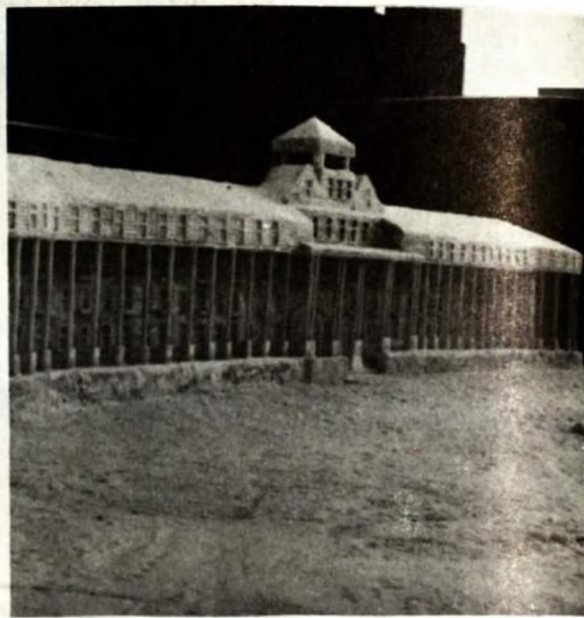
Towering high into the crisp winter air is the "United Nations Complex."

This majestic sight in ice was created by Phrozen Phifh-Sno-House.





"Taj Mahal—the Palace of Peace", in all its majestic detail, is sculptured by Phi Kappa Tau and draws attention to one of the most well-known wonders of the world.



Kappa Delta Psi Fraternity chose Mackinaw Island's "Grand Hotel", with the world's longest porch, to present a breathtaking sight of ice sculpture.

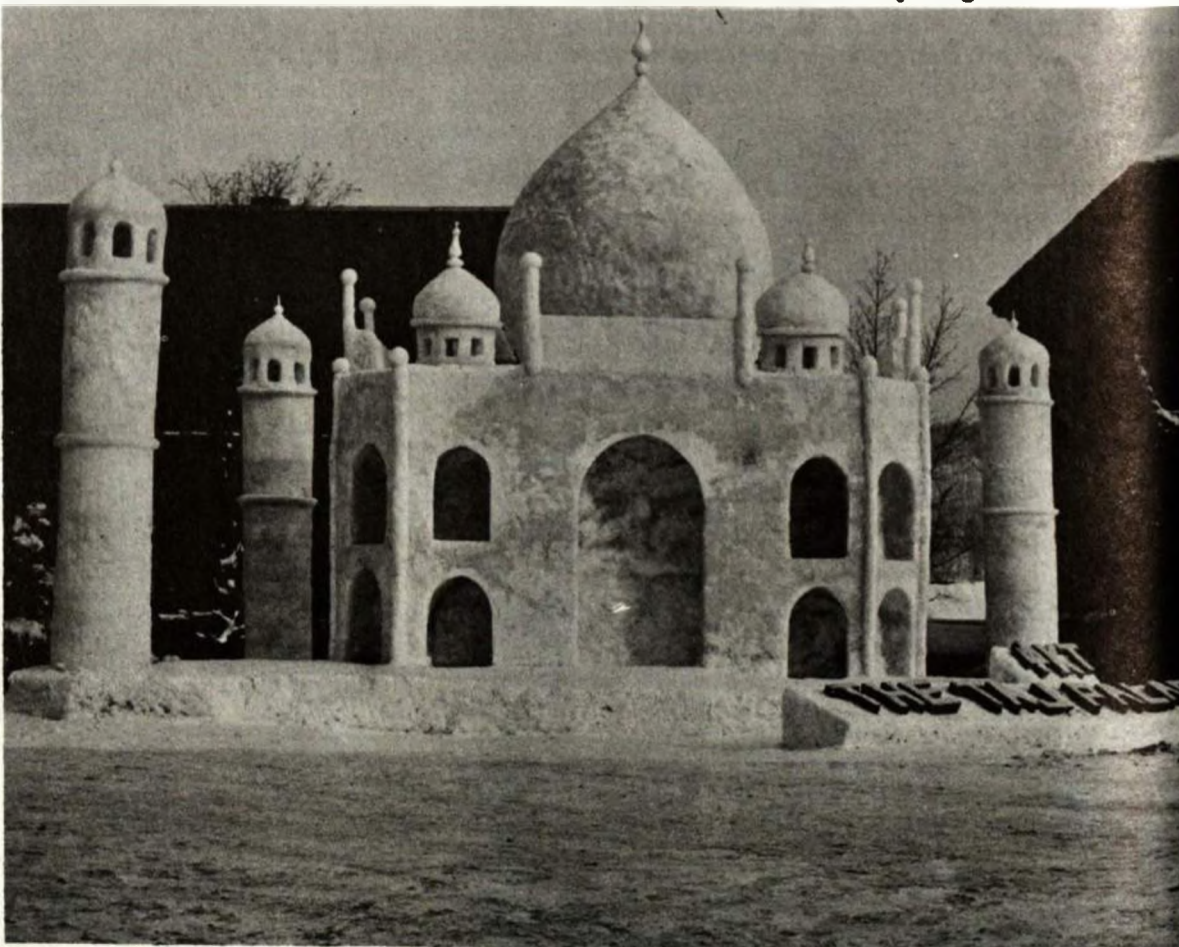


Depicting the "Easter Island Heads" located near the south shore of Chili, is the unique statue of the Newman House. Four heads, resembling Tikis, are in various positions as the result of wars in the waters in Chili.

An alpine scene is depicted by the Independents in their mountainous cottage and refreshing winter background.



Long days and nights went into the building of the magnificent "Siam Temple", constructed by Theta Tau. A uniquely carved Indian elephant stands guard to the temple, and makes a sight in ice that isn't easily forgotten.



A cool stool.





An impromptu Mr. Ugly.

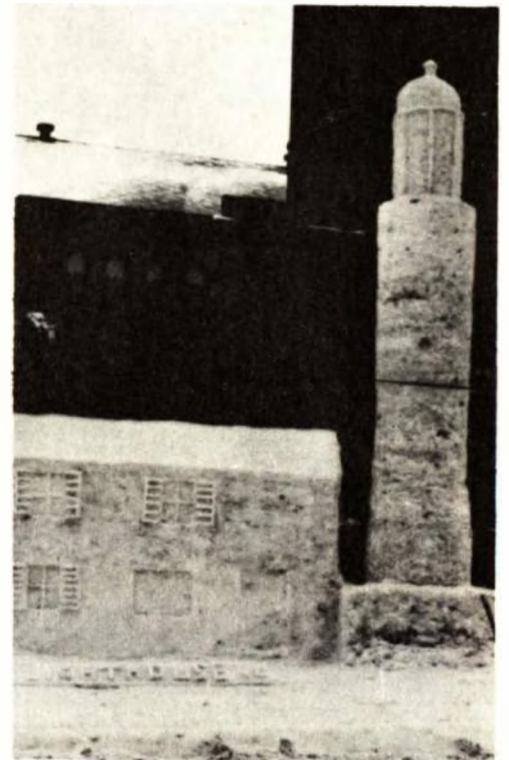


ASCE spent long hours to build their "Sphinx." This ancient Egyptian image is in the form of a recumbent lion with a lion's body and the head of a man.



Portraying a well known sculpture located in the Metropolitan Museum of Art in New York, is the Tech Wives presentation of "Mother." Fine detail shows "Mother" bending over with a baby in her arms.

Depicting the "Easter Island Heads" located near the south shore of Chili, is the unique statue of the Newman House. Four heads, resembling Tikis, are in various positions as the result of wars in the waters in Chili.



Just for fun—one john.



forty-seven



A celebrated "Mayan Temple" is the subject of Douglass Houghton Hall's Winter Carnival creation.

Your Local
Independent
Insurance Man

CONGRATULATIONS
TECH ON YOUR
FINE WINTER
CARNIVAL

MARTIN B. O'CONNOR

Real Estate and
General Insurance Agency

— HOUGHTON —
Telephone 482-1130

"A Good Man to Know"
A Good Man to do Business With

Gino's

RESTAURANT

Very
Best Wishes
for a
Wonderful
Winter Carnival

Fanny Farmer
and
Whitman Chocolates

Hallmark Cards

Cosmetics by
Helena Rubinstein
Yardley
Lanvin

Faberge - Houbigant
Max Factor

Prescription Specialists
for over 50 years

WEST SIDE PHARMACY

Near the Bridge — Houghton
Telephone 482-3340

We Deliver

Copper Country Automobile Dealers & Associates

McClure Motor Sales
Calumet Motor Sales
Superior Ford, Inc.
Public Chevrolet Sales
Stevenson Chevrolet-Olds
Siller Motor Company
Copper Motor Company

*"Buy your used car from
an authorized
new car dealer"*

WEBER'S

2-STORES-2-SERVE-U

Downtown Houghton

CONGRATULATIONS!

to

Michigan Technological
University's

WINTER CARNIVAL
and to all who help to make it
the best in the country.

WEBER'S

2 stores are your hometown
stores when you are away
from home.

We are here to help you
all-ways.

Complete Wearing Apparel
Sporting Goods — Gifts

SPECIAL
CARNIVAL SALE

For the
Best Insurance!
The following
members of the



Houghton County
Association of
Insurance Agents

will serve you best.

"FOR INFORMATION CALL"

Agents

Beaudry, A. J.,
218 Calumet Lake Linden 296-0112
Braun, Louis J.,
South Range Houghton 482-3260
Brodeur Ins. & Real Estate Agency,
109 W. Quincy Hancock 482-0651
Douglass, Frank A. Agency, Inc.,
324 Shelden Houghton 482-2660
Healy, James T. Agency,
525 Shelden Houghton 482-3380
Jacka, T. M. Insurance Agency,
319 Hecla Laurium 197
King Insurance Agency,
219 Sixth Calumet 96
Leveque Insurance Agency,
208 Fifth Calumet 1
Medlyn, R. W. Ins. & Real Estate Agency,
203 Fifth Calumet 21
Pichette Insurance Agency The,
207 Calumet Lake Linden 296-8541
Tervo Agency The,
317 Quincy Hancock 482-0080
Van Orden Ins. & Real Estate Agency,
501 Shelden Houghton 482-1130
Wickley, A. J., Ins. & Real Estate,
218 Quincy Hancock 482-1140



The Delta Sigma Phi Fraternity presented a modern day hippster viewpoint on the assassination of Julius Caesar. The blade of "Gillettus's" drew the final blood. Anthony's oration was dramatical as ever but certainly dealt with different subjects

DELTA SIGS 1st CLASS "A" SKITS

D. H. H. TAKES "B" HONORS

Douglass Houghton Hall held the audience's attention by parading raving beauties before their eyes in its skit, "Miss M. T. U." The representative from the Mechanical Department was crowned queen and sang her rendition of "Let Me Entertain You."



Hamar Quandt Company

Radiant Heating Oil

and

**Black Magic
Stoker Coal**

Houghton

Laurium

Ontonagon

**Rockhounds
Welcome!**

Lapidary Supplies

Headquarters for
SCHAEFER COPPER

**HAUG'S
JEWELRY STORE**

**Diamonds - Watches
Fine Jewelry**

318 Shelden Ave., Houghton
Telephone 482-3430

continued from fifty

The fall quarter at school was just great. Because it was the first term of college for us freshmen, we received practically no assignments. Most of us spent our hours of spare time swimming in the warm, crystal-clear waters of Houghton Canal. We enjoyed many of the long autumn evenings dancing with an overflow of lovely coeds in the Student Union building. After the dances many couples would spend hours simply walking through the streets of the town. It's very picturesque.

I suppose you have seen reports telling about the great quantity of snow that has fallen here. Do not believe them. Up until a few days ago the ground was bare. But then some people decided that they wanted to do some skiing on the hill that faces the college from the north side of the canal. These people, I am told by the Chamber of Commerce, purchased a snow-making machine and erected it on the top of the hill. This machine runs day and night, spewing

snow down the hillside. Whenever a north wind blows, it carries the snow down the hill, across the canal, and dumps it on our campus. There has been a north wind blowing for the past several weeks, and the ground is now covered to a depth of several feet. If this snow machine is not stopped soon, I am afraid I will have to get my coat out of the trunk.

Because I do not know whether or not my parents told you about my grades, I will tell you now. I earned a grade point average of 3.9 last quarter. Mom was not very pleased and I cannot say that I blame her. I know that I can do better if I just try a little harder. I guess I will have to put in a full hour of studying a night this term. Then I will be able to rest, assured that I will reach the all men's average.

I will close now because I am running out of paper. I will write more when I learn more.

Your loving nephew,



JERRY DEMOTTS

Graduate Photographer
New York Institute

Studios in Michigan

614 Shelden Ave., Houghton Mich.
482-1901

229 Genesee Ave., Iron River, Mich.
CO 5-4516



2nd CLASS A

The Phi Tau's depicted agent "Bud Wiser" on a search for the "missing link", who happened to be "Viet Cong", son of King Cong. Bud was accompanied on his mission by "Tasty", his trusted companion who was disguised as a candy bar. The appearance of Tarzan swinging through the trees highlighted the skit.

2nd CLASS B

The Tech Wives described a day in the life of an American housewife. The dialogue was filled with satirical comments directed at today's commercials.

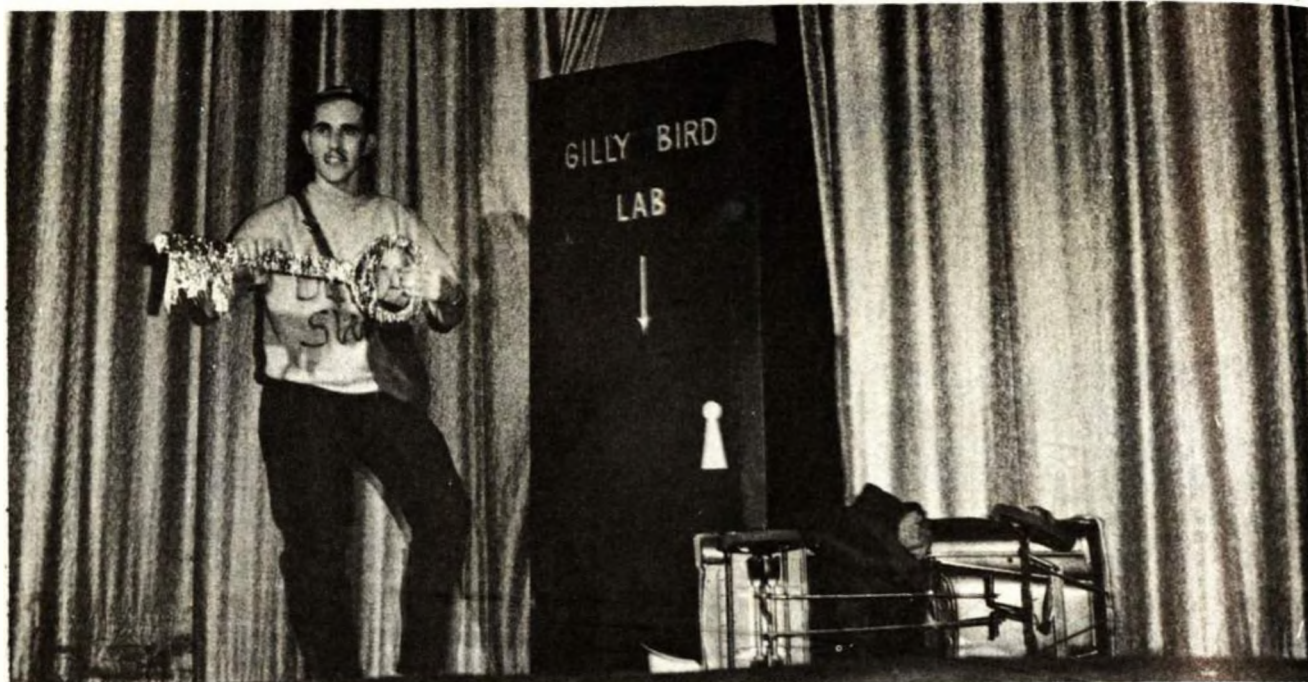


3rd CLASS A

The H&T's presented a miniature flea circus as their skit theme. The "fleas" performed feats of strength and acrobatics. The height of the skit was the firing of the star performer from a cannon.

3rd CLASS B

The investigation by Raymond L. Smond of missing Tech students from the metallurgy building was the subject of the Phrozen Phifth-Sno-House skit, "Copperfinger." Ray's clues lead him to "Gilly Bird." A fight and rescue by a lovely blonde climaxed the skit.



"Big Mike" and his chorus line of "Virgins" represented the Sig Eps. Take-offs on current popular songs were used to describe the first frosh chem test, scheduling, dorm life, and the "East Lounge Follies."

A parody attacking the Health Center was the theme of the Sig Rho's skit. The standard "cur-alls" were issued for all ailments. The location of the "lost patient" ended the skit on a note of mystery.



Destroying snow statues was the theme of the Newman House skit. The methods of attack employed by agent 002 included salt, disguising himself as a snow flake, and the vivacious agent "36-24-36."

Triumvirate's version of a "Great Bank Robbery" found the thieves mistaking the coed section of the dorm for a bank. The danger to the girls became known to Batman and Robin who quickly saved the day.





Constant checking of props is necessary to prevent any unwanted surprises during skit presentations.



In the rush between skits, some actors are unable to retreat without some loss of poise.



Unusual backstage scenes were provided by skit actors in their various costumes.



Queen Linda and her court were introduced to the audience during intermission.



Theta Tau previewed its acrobatics before Blue Key and other skit members in Monday's dress rehearsal.



Entertainment between skits was provided by Zeke and friends.



MAY YOUR 1966 CARNIVAL

BE ANOTHER HUGE SUCCESS

THE MERCHANTS & MINERS BANK

Congratulations!

Blue Key and Students of Michigan Tech
for a fine Winter Carnival.



*"Made only in Michigan's beautiful
Upper Peninsula"*

MEMORIAL UNION BOARD
and
MEMORIAL UNION EMPLOYEES

VOLLWERTH'S SAUSAGE

We Encourage Both Students and Faculty to Visit Our Indoor Showrooms

TROPIC TEMPERATURES — NO SNOW — NO BLOW

— SPECIAL STUDENT FINANCING —



HONDA Sales - Service

As low as *No Money Down*
\$15.00 per month

DODGE 4 Wheel Drive Pickups

"The toughest on the road"



Always a Complete Stock of
the Dependables by Dodge

LAKELAND MOTORS

416 — 6th ST., CALUMET
TEL. 838 or 587





NEW CHEVELLE SS 396

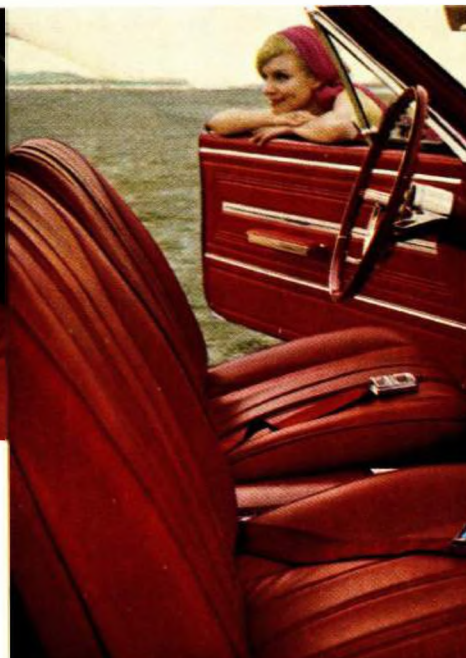
a Turbo-Jet V8 surrounded by everything you could ask for



Under an SS 396's air scoop-styled hood, a **Turbo-Jet V8**: 396 cu. in., 325 hp. There are other versions you can ask for, too, 360 hp and 375.



Center console you order houses shifter. Standard gearbox is our new fully synchronized **3-speed**. You can specify **4-speed** or **Powerglide**.



An SS 396 is a sport coupe or convertible. It's also a vinyl interior, full carpeting and all the niceties. You order **bucket seats** if you want.



Red stripe nylon tires on big 14 x 6 wheels link an SS 396 to the road. You can ask for these new **mag-style wheel covers** if you like.



Hooded, padded instrument panel lays it out for you. More specifics? Order **full instrumentation**: tach, ammeter, temperature, oil pressure.



Special suspension (springs, shocks, stabilizer bar) and 3.31:1 axle ratio are stock SS 396. You can order higher, special-purpose ratios.



PERFORMANCE THE CHEVROLET WAY
Chevrolet Division of General Motors, Detroit, Mich.