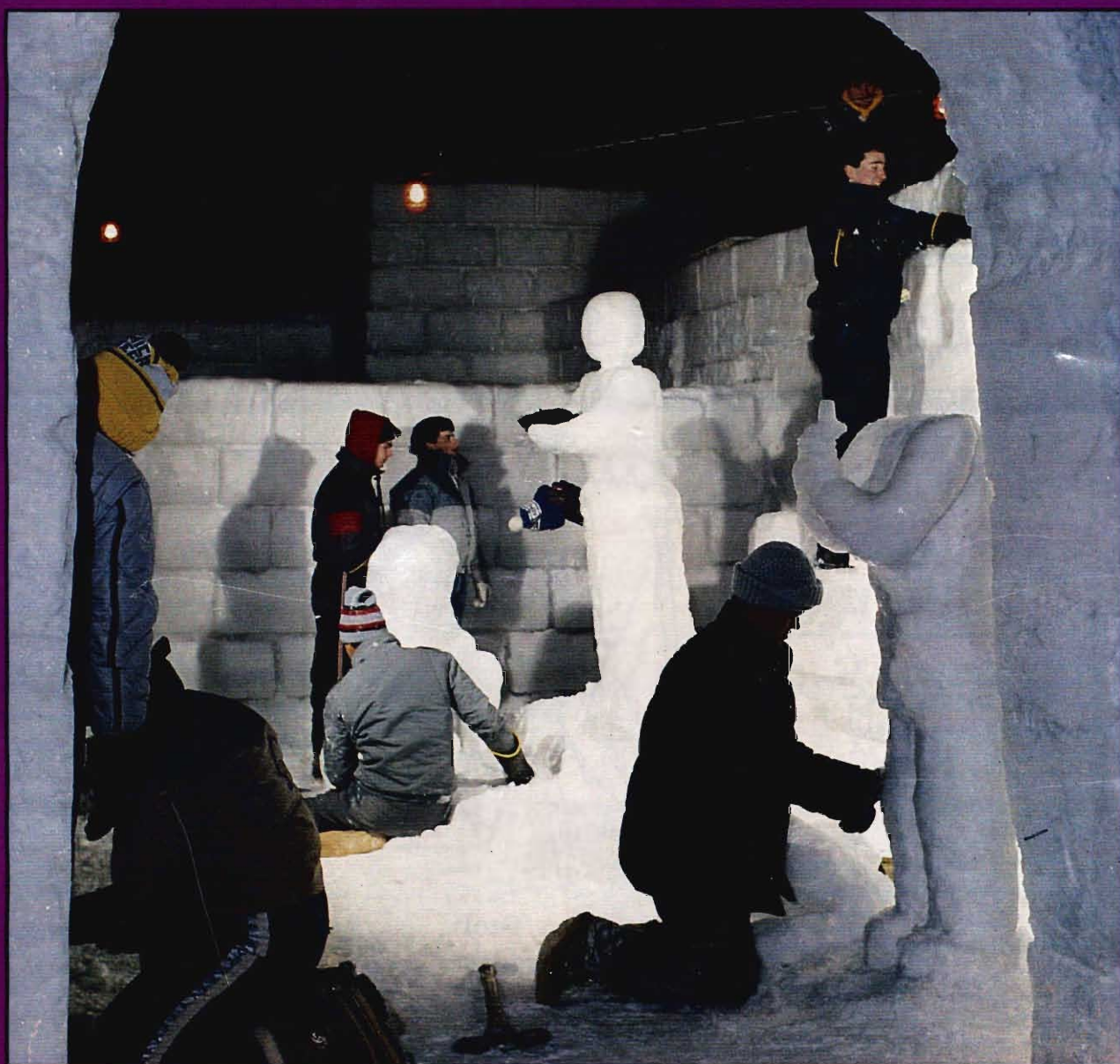


LD
3347
.L63
ARCH
C. 1

MICHIGAN TECHNOLOGICAL UNIVERSITY

CARNIVAL

26th ANNUAL PICTORIAL EDITION



American Dreams In A Frozen Scene

February 1 – 4, 1989

\$3.00



Little Caesars®

*Little Caesars of Houghton
Welcomes Family and Friends to
Michigan Tech's Winter Carnival!!*



105 Montezuma Street · 482-4444
(Corner of Bridge Street and Montezuma Street)



Contents

QUEENS

| | |
|---------------------------------|----|
| Queen Candidates..... | 12 |
| Queen Talent..... | 14 |
| 1989 Winter Carnival Queen..... | 15 |

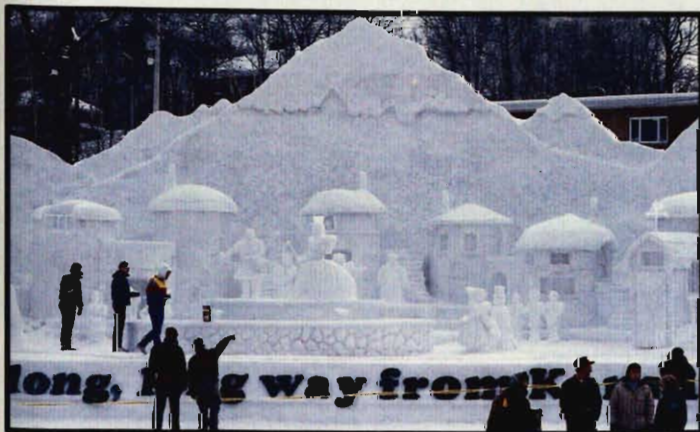


Photo by Brian Horen

A queen candidate gets a dump in the snow.

ENTERTAINMENT

| | |
|-------------------------|----|
| Tall Tales..... | 6 |
| University Theatre..... | 10 |
| Stage Revue..... | 17 |



Visitors are amazed by the spectacular ice sculptures.

SPECIAL EVENTS

| | |
|---------------------------|----|
| Introduction..... | 47 |
| Skating..... | 48 |
| Sno Volleyball..... | 49 |
| Broomball..... | 50 |
| Snowshoe..... | 51 |
| Downhill Skiing..... | 52 |
| Cross Country Skiing..... | 53 |
| Dogsled..... | 54 |

STATUES

| | |
|--------------------------|----|
| Statue Map..... | 23 |
| Class A Competition..... | 25 |
| Class B Competition..... | 35 |
| Class C Competition..... | 31 |
| Class D Competition..... | 38 |
| All-Nighters..... | 40 |

SPORTS

| | |
|-------------------------|----|
| Hockey..... | 42 |
| Men's Basketball..... | 44 |
| Women's Basketball..... | 45 |



Photo by Photo Services

You haven't played volleyball till you've played Snow Volleyball!

LIBRARY



Carnival '89

Welcome to the 1989 Winter Carnival. Every year on the MTU campus, as the long cold days of winter begin to play on the minds of students, attention focuses on the first week of February. This date marks the beginning of Winter Carnival.

Gilded with 67 years of history and tradition, Winter Carnival emerges in 1989 as a unique event and certainly, the highlight of the school year.

With the theme "American Dreams In A Frozen Scene," the Michigan Tech campus has been transformed into a winter wonderland of ice sculptures and beauty... of fun and frolic. We invite you to view this wonderland with us--through the pages of this special souvenir edition. We hope you enjoy Carnival!



Members of Phi Kappa Theta put finishing touches on their 1988 statue.



Cross-country skiers race for the finish.



Go Huskies Go!

Photos by Photo Services



The Ventures Group

Ventures Group Member Companies Salute Michigan Tech's 1989 Winter Carnival

Environmental Sector

*Zimpro/Passavant
Enviroscan*

Developmental Sector

*Keweenaw Development Corporation
Keweenaw Hotel Group, Incorporated.
Calumet Traction Developers Company
Keweenaw Management Corporation
Shelden Developers Limited Partners
Quincy Development Corporation
Copper Range Development Corporation
Herman Gundlach, Incorporated
Herman Gundlach Engineering Corporation
Michigan Tech Capital Corporation*

Manufacturing Sector

*Pellet Technology Corporation
Peninsula Copper Industries
KMB/Tech. Capital Corporation*

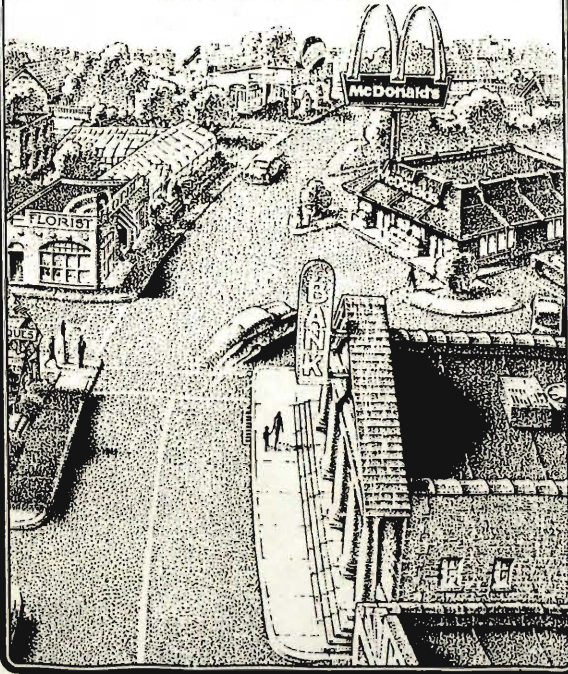
Wood Products Sector

*Portage Holdings, Incorporated
Horner Flooring Company*

**We're close by,
right on your way™**

On your way around town today,
look for McDonald's. We're always close by.
Just remember, good food and good
fun are right on your way every day.

Downtown Houghton



©1984 McDonald's Corporation

**IT'S A GOOD TIME
FOR THE GREAT TASTE** 



The PRO SHOP can make all your wishes come true!

Monday-Friday 9:00-5:00
Wednesday 6:30-9:00pm
Saturday 10:00-4:00pm
Sunday 1:00-4:00; 6:30-9:00

"Open 7 days a week!"

Michigan Tech Lode - 1968



You guys has did it again—showed us
ole natives that winter and snow don't
snow ya! Yer Carnival's ratin' tops, and
we're glad to be in it with ya—up
to our ears! Wait'll ya see the 1968
PICTORIAL!

**The Book Concern
PRINTERS**

Easier to find — 1 block north of Detroit & Northern
129 Franklin Street — Hancock
Printers — Binders — Lithographers

Michigan Tech Lode - 1970



We was gonna build a snow statue like
the other toots, an thought this eskimo
was a good model. Only we don't har-
poon nobody so it dint fit. All them other
stachos will be better anyway—just like
our printin.

The Book Concern

Collegiate Printers Since 1900
129 Franklin St., Hancock

Michigan Tech Lode - 1972



**HERE'S
TO YA!**

To all youshe guyshe who
has frozhe your . . . woopsh!
. . . hic! — makin them
statshoos an shuff — a big
toasht! — an put shome in
yer own radiatorsh!

The Book Concern

Collegiate Printers Since 1900
129 Franklin St., Hancock

 **BOOK
CONCERN
PRINTERS**

**129 Franklin Hancock, Michigan 49930
(906) 482-1250**

Office hours: Monday through Friday, 8:00 a.m. - 4:30 p.m.

Printers of the 1989



Winter Carnival Pictorial

Who's Responsible

Photo by Brian Horen

Many campus and community groups work together to make Carnival the exciting event it is today.

Campus

Blue Key has the biggest job of organizing and planning all of Winter Carnival. Seven special committees made up of members work year-round to coordinate Carnival events.

Undergraduate Student Government sponsors the Winter Carnival busses that bring many of our friends and family up for Carnival.

Alpha Phi Omega warms up statue viewers by serving them hot chocolate and donuts from their Statue Serving Hut which they build out of snow.

Omicron Delta Kappa makes the decorations which adorn the Sno-Ball.

Photo by Brian Horen



Mary Walstrom, queen candidate, helps Linda from the Library Bar stir a pot of chili for the Chili Run.

Community

City of Houghton provides free bus service throughout Carnival weekend to students and visitors travelling between downtown and campus.

Library Bar makes hot chili for the Annual Chili Run to warm up cold statue workers during the all-nighter.

Turner Bakery, Inc. and **McDonalds** provide tasty rolls and welcomed hot chocolate which also go to dedicated statue builders.

Houghton Chamber of Commerce provides food for the Chili Run and also helps Blue Key with their mailing lists.

Houghton Business Association helps with advertising and promotion of Carnival and some members sponsor Queen candidates.



Queen Candidate, Cynthia Fix, takes a ride on the transit.



Tall Tales

Editor's Note:

A new addition to the *Pictorial* this year is the "Tall Tales" Tournament. This event, which was first associated with the Burlington National Liars Club, judges tales about Michigan Tech and Houghton in an attempt to find the campus' biggest yarn-spinner. Presented below are a few entries.

"Heikki Luntta, Strictly A Local Snow God"

Keweenaw's mythical Heikki Luntta is strictly a local Finnish snow god, one of the Keweenaw's original products, produced by and for the Keweenaw because the Keweenaw produces so much snow. Heikki's dancing makes snow. Because Heikki lives in the Keweenaw woods, he loves making snow and making winter more fun for those visiting the forests. In fact, on the tip of the Upper Peninsula, where Keweenaw County exists, at Delaware Mine Location, a sign put up by the Keweenaw County Road Commission states that the location is "The Snow Capital of the Midwest."

What does Heikki Luntta, or Henry Snow, in English, have to do with Delaware Mine Location? He tells those lucky enough to understand his broken English that the Delaware Mine is the only place in the world where he will show himself publicly. That area proves it.

Heikki is not a social being, existing only to produce snow when he dances, sequestered in his woods, wearing his long, brown horsehair coat and bearded in blue and white flowing facial foliage, half masking his face.

When Heikki dances, gyrating his awesome legs and arms in a peculiar crazy lump-a-lunk maneuver on a wintery afternoon (refusing to work at night, locals say) then does that snow come tumbling out of the heavens! The faster Heikki dances, the faster it snows!

During the Great Snowfall of 1978-79, Heikki really revved up his dancing! The mine site received a record 399 inches of snow! Locals are betting that Heikki may duplicate if not surpass that ten-year-old record this year.

--Jan Manniko

"The Mystery of '26"

Gather 'round for a story about the Ice Carnival of '26. A time when we still had a fundamental awe of Mother Nature and her spectacular feats. This was also a time when strange and mysterious things came to pass.

Carnival night was clearly lit up by stars and glimpses of Northern Lights. Everyone was in town to see our boys in a hockey game against the Marquette boys. Needless to say, we wiped their noses for them!

After the game, we all wound our merry ways back to campus for one last look at the ice sculptures. Little did we know what awaited us there. The first hint of trouble came when folks began shouting at the top of their lungs. The next one came from the fact that every single statue was gone!

The fellows and I all ran around, looking for some clue as to how our statues had been removed, for there was *no* sign they had melted! The families up to visit just huddled together, confused.

Suddenly, someone spotted a trail of footprints leading across the Portage. These footprints were too big to belong to people. And everyone knows statues can't walk!!

A group of us got together to follow the trail. We crossed the Portage and when we got to the other side, we found huge ramps of snow and ice. Somehow, by push and perseverance, we climbed Mt. Ripley.

As we rounded a bend, a wierd light greeted us and we saw its source. Our missing statues were here playing in the snow! Though no one made a sound, they turned in our direction. We all turned and ran. The trip across the lake was fast. No one said a word about what we'd seen.

The next morning all the statues were back in place. It could have been a dream, except for the statue holding the direction sign for Mt. Ripley.

--Sandra B. Reper

"The Monster Nugget"

The Copper Country derives its name from the red metal that comes out of the ground all over the Keweenaw. The copper here is different from that in most copper mining areas because it comes from a near-pure form called native copper.

Many old miners claim that there is still a lot of copper in the ground. Jacob Laamanen worked in the Red Jacket Number Three mine for fifteen years before it closed in 1949. He said, "Oh yeah, dars at least as much copper down dar as we pulled out." His voice lowers as he confides, "And about a third of what's left is in one chunk. We call it da Monster. Dat ting dwarfs dat Ontanogan Boulder dey got dar at the Smithsonian Museum. I betcha it's as big as da Saint Ignatius Church dar in Houghton."

"Dat ting's so big it takes up ten levels. Of course part o' da reason it's so hard ta get outta da ground is dat you can't dig a hole straight down around da sucker."

"You know dos stopes (the area the miners blast to dis-lodge rock) halfta go up at a twenty-four deegree angle. Ya can't cut dat copper neither. Dat stuff's too damn soft."

"I heard dey tried to use a laser gun to cut da Monster," he laughed. "Da copper moves da heat away too fast. 'I'll tell ya, I tink dat chunk 'o copper is gonna be in da ground 'til my grandkids got grey beards.' "Yaah dat ting will sure make pennies if dey ever get it outta da ground. But don't holdjer breath waitin' on dat."

--Jim Lane

Pictorial Poetry

First Year Here

Keeping my life wider
Than the width of the books
That seem to govern my days

Is as hard as getting to sleep
With the snow men moving
mountains with their machines
In the early morning hours.

The icicles only drip long enough
To get longer, and the snow melts
Only enough to thicken the sheet
Of ice that I slipped on just today.

It's a familiar joy to see a pair of
Smiling eyes beneath a grey scarf
Or men and women foolish enough
To play broomball at midnight.

But there are times when
My past seems infinitely more glamorous
than my future in Houghton.

When I can't remember the glorious fall
Because the trees don't seem so happy anymore...
When I can't remember what my family really looks like
Because I can't get home to see them...
When I can't even fathom beyond Houghton
Because I cannot get much further North.

I look and listen to the rest of you for comfort
And I know that just like me,
You all have things to learn and dreams to keep warm
In this cold, cruel, beautiful world away from the world.

--Karen Hopkins



The Tech campus is blanketed in snow for Carnival.

Photo by Brian Horen

Tech

We all come together
here at the end of the earth
to learn something.

We have our dreams,
and for now
this is where they are taking place,
Here, in this white landscape,
with statues made of snow
and dreams made of gold.
They take place here, just long enough,
until we must move to another place
to consecrate the dream.

But this cold place
will always be remembered
with memories good and bad
For here we learned about knowledge
and we learned about life.

--Patrick Hoban



Broomball continues to be a favorite Winter Carnival sporting event.

*The Chemistry Tutoring Center
staffed by
The Chemistry/ Chemical
Engineering Department*



When the Party's Over Come Visit Us!

Department Of Computer Science

*Our B.S. and M.S. degree programs
are excellent preparation for careers in:*

- Applications Programming
- Systems Programming
- Scientific Programming
- Systems Analysis
- Research in business, industry
and government
- Teaching

*They are also excellent preparation
for continued graduate study.*

**We Wish Everyone a
Fun - Filled
WINTER CARNIVAL !!**

Congratulations from the City of Houghton



The Houghton City Council...

**Mayor Martin Feira, Mayor Pro Tem, Dorothy Love, Andrew McCormick, John
McRae, Gertrude Smith, James Vencato, and Andrew Benaglio**

Carnival Quotes

What Winter Carnival event do you enjoy most?

Playing Snow Volleyball. It's such a fun event!
--Jennifer Steger

I enjoy the skits and all the work people put into them.
--Jim Martnoana

The all-nighter...Houghton turns into New York for the night.
--Sedrick Swygert

Photo by Brian Horen

Describe Winter Carnival in one word.

Tripped Out!--Sedrick Swygert

Amazing!--Pat Gallagher

Fun!--Greg Carlson

Wow!--Paulette Pierpont

Ice-Hot!--Jenny Dybala

Fantastic!--Bill Flood

Photo by Brian Horen

What is your fondest Winter Carnival memory?

The all-nighter because people are fired up about statue building.

--Jim Martnoana

Waiting in line for queen (competition) tickets. It was a lot of fun and a big party.

--Jennifer Steger

Photo by Brian Horen



Theatre

Rhinoceros, a theatre of the absurd play in three acts by Rumanian playwright, Eugene Ionesco, was first produced in 1960 and focuses on Berenger, an anti-hero who watches, alternately in despair and envy, as the people around him change into rhinoceroses, trampling anything that gets in their way. For whatever reason, Berenger cannot join them, and while he is left at the end shouting, "I'll never capitulate," the victory seems somewhat hollow.

Photo by Julie McIlvenny



"It certainly looked like a Rhinoceros."

Photo by Julie McIlvenny



"It's quite logical. Quite logical," states the **Older Gentlemen** (right) to Berenger (middle) and **The Logician** (left).

Photo by Julie McIlvenny



"Puss, Puss, Puss," whispers **The Logician** as he strokes his cat.

The University Theatre production, designed in the manner of German Impressionism, by **Lisa Payne** and directed by **Dr. Sue Stephens**, is set in the late 1930's and features **Jeff Versteeg** as Berenger with **Gred Sidnam** as his friend Jean, **Stacy Young** as Daisy, **Larry Lindemen** as Dudard, a fellow worker, and a cast of interesting characters, all of whom turn into rhinoceroses. The play makes a point about human nature which is hard to deny, yet painful to accept--it is hard to hold onto your own value systems and view of life when everyone around you sees things differently or is changing to go along with the crowd, symbolized, in this case, by becoming a rhinoceros.

Rhinoceros will be showing February 2,3, and 4 at 8 p.m. in the Walker Arts and Humanities Center.



The Housewife (middle) cries, "It ran over my cat."

Photo by Julie McIlvenny

Photo by Julie McIlvenny



Daisy asks The Grocer, "Do you have any Oranges?"



CAST

| | |
|---------------------------|-------------------|
| The Waitress | Ginger La Beske |
| The Grocer's Wife | Cindy Curry |
| The Housewife | Amy Hanshaw |
| Berenger | Jeff Versteeg |
| Jean | Greg Sidnam |
| The Grocer | Rich Passavant |
| The Old Gentlemen | Dale Dobson |
| The Logician | Geoff Ehnis-Clark |
| The Cafe Proprietor | Bill Dore |
| Daisy | Stacy Young |
| Dudard | Larry Lindeman |
| Botard | Rich Passavant |
| Mr. Papillon | Jim Matusik |
| Mrs. Boeuf | Cindy Curry |
| A Fireman | Bill Dore |
| Rhinoceroses | Cast |



Queen Profiles

Karen Hoffman

Hometown:
Frankenmuth, MI
Major:
Mathematical Sciences
Sponsor:
Douglass Houghton
Hall
Talent:
Saxophone: Silhouette



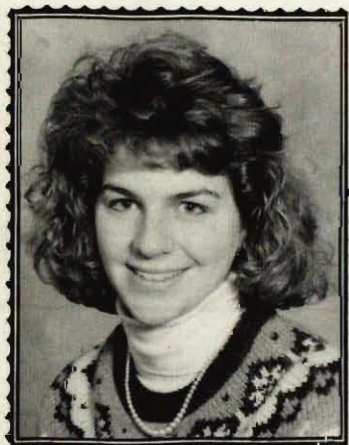
Lauri Bigalke

Hometown:
Manistee, MI
Major:
Mechanical
Engineering
Sponsor:
Tau Kappa Epsilon
Talent:
Skit: An American
Dream Of Mime



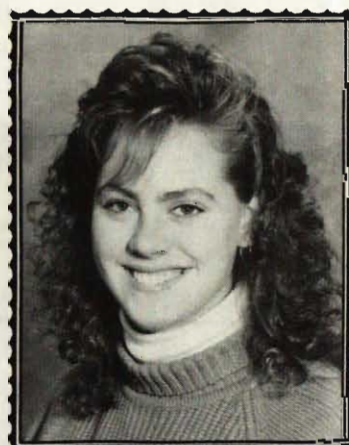
Cynthia Fix

Hometown:
Freeland, MI
Major:
Mechanical
Engineering
Technology
Sponsor:
Lambda Chi Alpha
Talent:
Jazz Ensemble: The Car-
nivorous Lady



Georgia Carlson

Hometown:
Munising, MI
Major:
Medical Technology
Sponsor:
Triangle
Talent:
Flute: Sicilian And Giga
From Sonata V



Melissa Horvat

Hometown:
Manistee, MI
Major:
Electrical Engineering
Sponsor:
Phi Kappa Tau
Talent:
Piano/Dance: Keys To
The Future

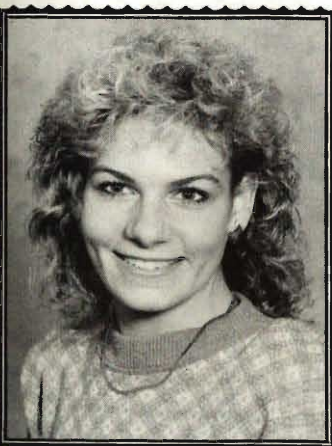


Charlie Thompson

Hometown:
Brighton, MI
Major:
Geological Engineering
Sponsor:
Delta Sigma Phi
Talent:
Skit: A Golden Dream



Dreaming of



Mary Walstrom

Hometown:
Kingsford, MI
Major:
Scientific & Technical
Communication
Sponsor:
Sigma Tau Gamma
Talent:
Skit: A Yankee Doodle
Dream

Julie Edick

Hometown:
Gladwin, MI
Major:
Mathematical Sciences
Sponsor:
Delta Phi Epsilon
Talent:
Song: A Tribute to
American Freedom



Kim Klass

Hometown:
Houghton, MI
Major:
Business
Sponsor:
Alpha Xi Zeta
Talent:
Comic: MTU: That's
What Dreams
Are Made Of



Photo by Ted Lewis



Sitting--L-R: Cindy Fix, Charlie Thompson, Kim Klass, Julie Edick
Standing--L-R: Karen Hoffman, Mary Walstrom, Laurie Bigalke, Georgia Carlson, Melissa Horvat



Being a Queen...

Queen Talent



Laurie Bigalke dreams of winning an Olympic gold medal in her mime entitled "An American Dream of Mime."



Melissa Horvat entertained the crowd with her piano/skit entitled "Keys to the Future."



Georgia Carlson plays a classical flute solo.

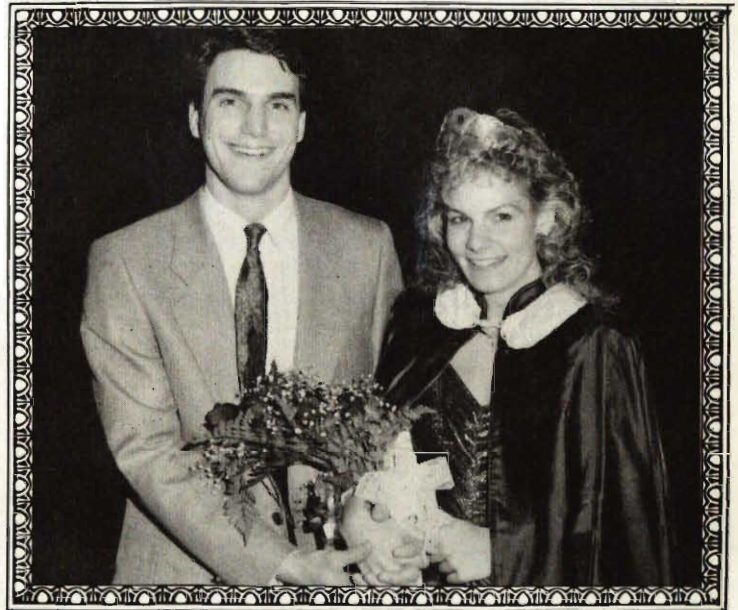


Charlie Thompson singing "A Golden Dream."

Coronation

Mary Walstrom's dream of becoming a queen came true last Saturday, January 28, as she was crowned the 1989 Winter Carnival Queen. Miss Walstrom, dressed in a full-length silver gown, was escorted by **Mr. Bob Cococetta**, a member of Sigma Tau Gamma. Mary entertained the audience with her tap dance skit entitled "A Yankee Doodle Dream," which she choreographed herself.

Mary, a native of Kingsford, Michigan, is majoring in Scientific and Technical Communication. She will graduate this spring and then go on to graduate school. Miss Walstrom is a member of Phi Delta Chi and Omicron Delta Kappa.



1989 Winter Carnival Queen, **Mary Walstrom**

Photos by Brian Horen



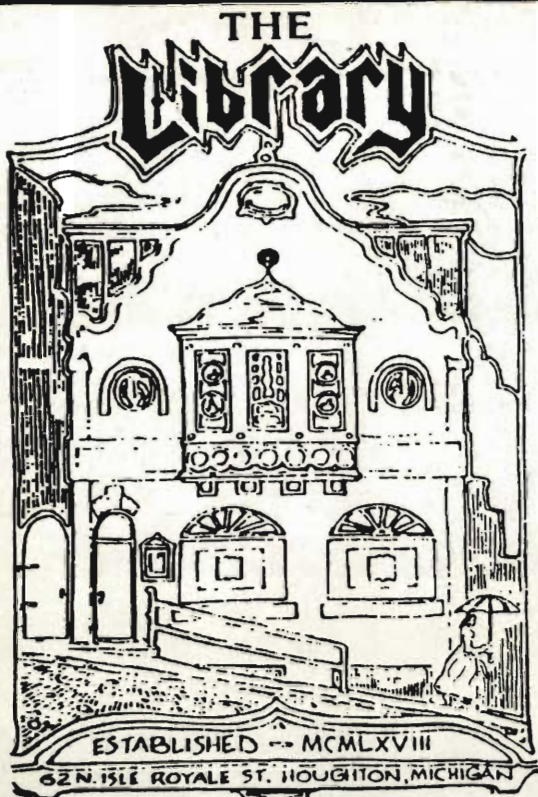
Mary is hugged by 1988 candidate, **Marirose Illka**



Mary performs her tap dance skit, "A Yankee Doodle Dandy."



First Runner-Up, **Charlie Thompson.**



**A RESTAURANT
& BAR**

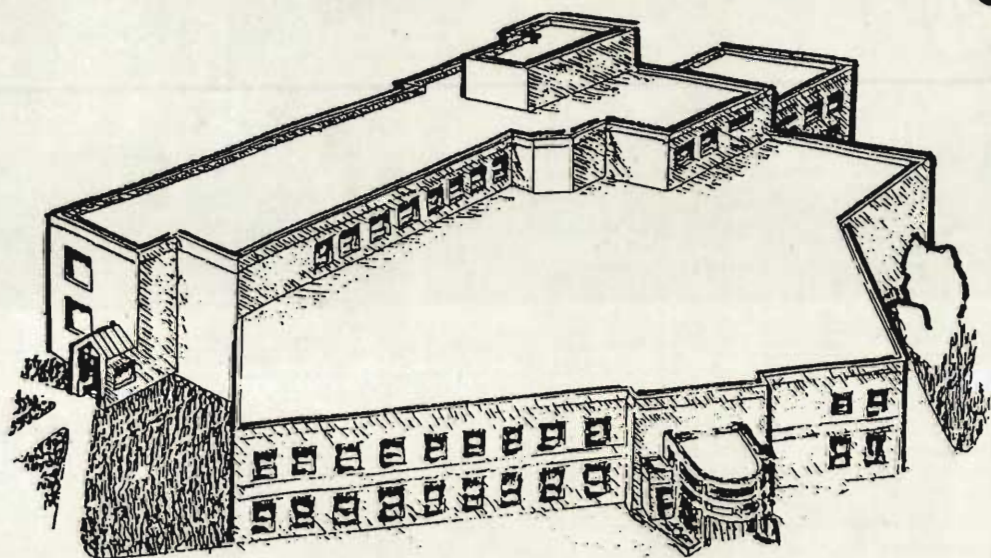
experience
**Old Books, Good Cooks, FINE FOOD
&
Winter Carinval Memories**

The tradition of good times, good food,
& great people continues making *the Library*
"one of the nicer things about Houghton"

Serving FINE FOOD till 1am seven days a week &
OPENing at 11:30 am Monday thru Saturday, Sunday at 5:00 pm

the Library - Damn fine cuisine-and
the food aint bad either /906-482-6211
62 N. Isle Royale Houghton, MI.

Yalmer Mattila Contracting, Inc.



**General Contractors for the
Electrical Energy Resources Center and Memorial Union Building**

Stage Revue



Photo by Brian Horen

The Stage Revue during Winter Carnival is a traditional crowd pleaser, where student organizations present their originality and talent by acting out short skits. As you will see in the next few pages, the skits are filled with lots of laughs. The fun occurs on Thursday of Winter Carnival week, with the top eight finalists performing. Trophies for 1st, 2nd, and 3rd place winners are presented at the Awards Ceremony on Saturday, Feb. 4, in Fisher Hall, Rm. 135, at 11:30am.

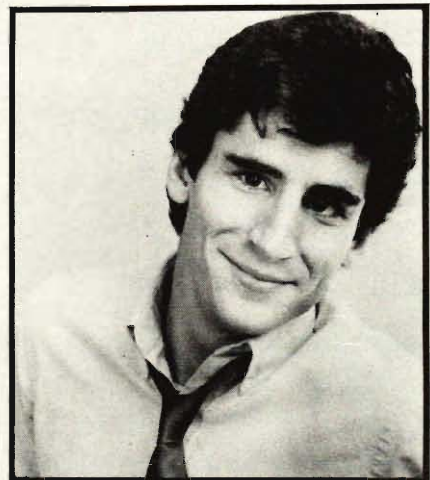
Photo by Matt Howard



Cardboard cars race across the stage.



Delta Phi Epsilon snowflakes dance and sing to the crowd.



Jonathon Solomon

Jonathon Solomon, comedian, appeared as Master of Ceremonies for the evening. Solomon has appeared on the T.V. show Star Search, as well as performing at New York's Improv and Comedy Cellar. Much of his humor centers around the disorder of one's growing years. Solomon's appearance at the Stage Revue gave Michigan Tech a taste of big city comedy clubs. Now that's a refreshing change!

Stage Revue

Delta Upsilon Presents-- "Snow Control"

Up in the attic of 1101 College Avenue, students compete for prizes by answering questions dealing with Michigan Tech and Winter Carnival, on a zany game show called SNOW CONTROL.



Gwen, **Jeff Lepkowski**, celebrates "her" victory by jumping into the host's arms.

Alpha Sigma Tau Presents-- "T'was the Night Before"

Our main character has a nightmare filled with reasons why his dream of graduating in 4 years will not come true. These include a flubbed interview, a flunked class, and a horrifying exam.



Nick, **Donna Novak**, freaks out in pre-interview anxieties.



Shelly Rogers, the narrator, reads a bedtime story.

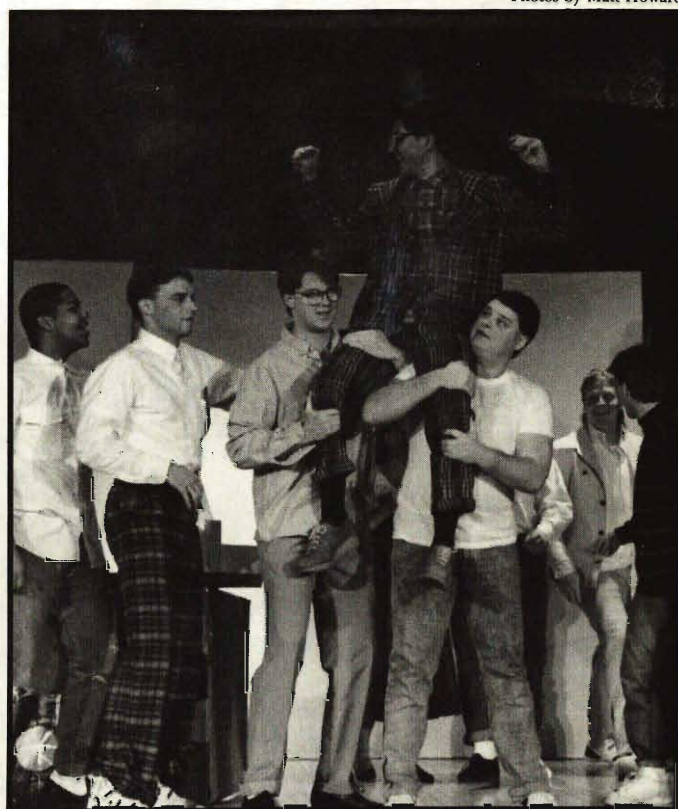
Photos by Matt Howard

Lambda Chi Alpha Presents-- "Eugene Saves Tech"

Eugene and Candace Penobscot dream that their son, Hilbert (H.P.), will attend Michigan Tech just as they did. However, the evil Vultures Group plans to ruin the Penobscots' dream. Only Eugene can save the day.



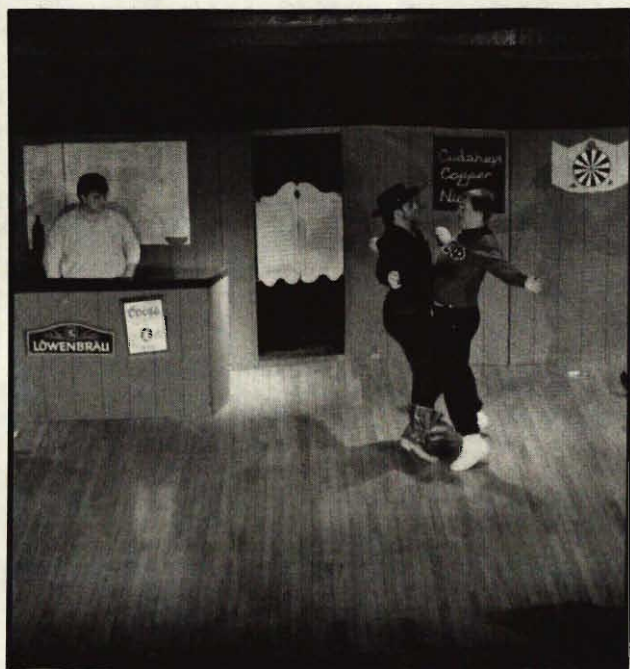
The Vultures Group, under leadership of Head Vulture, **Mike Wick**, proclaim their plans to steal MTU.



Eugene, **Carl Craven**, is hailed by grateful students for saving MTU.

Delta Sigma Phi Presents-- "Who was that Masked Man?"

The Lone Ranger and Tonto save a friendly copper miner from Black Bart, who wants to destroy the friendly miners' dreams of prosperity and ruin Winter Carnival.



Tonto, **John Klubacher**, and a thug, **Chuck Keller**, "suomi wrestle" in a barroom brawl while bartender, **Norm Farhart** watches.



The Lone Ranger, Tonto, and the Copper Miners celebrate driving off the bad guys.

Stage Revue

Phi Kappa Theta Presents-- "Toontown Lands on Tech"

A glory seeking scientist sends three addle-minded astronauts on a perilous journey to Mars. When the ship malfunctions, the bungling astronauts find a wacky misadventure on the MTU campus during Carnival.



"Have you seen a 150lb. Raisin around here?" inquire Fog Horn Leg Horn and Yosemite Sam to Bugs, Don Blake.



Baby-Faced Perkins, Greg Blount, holds the trophy and celebrates with team members on his home run that won the game.

Photos by Brian Horen



Yosemite Sam, Mark Schultz, Raisin, Jenifer Lampinen, and Fog Horn Leg Horn, Tom Baeckeroot find MTU to be a strange new environment.

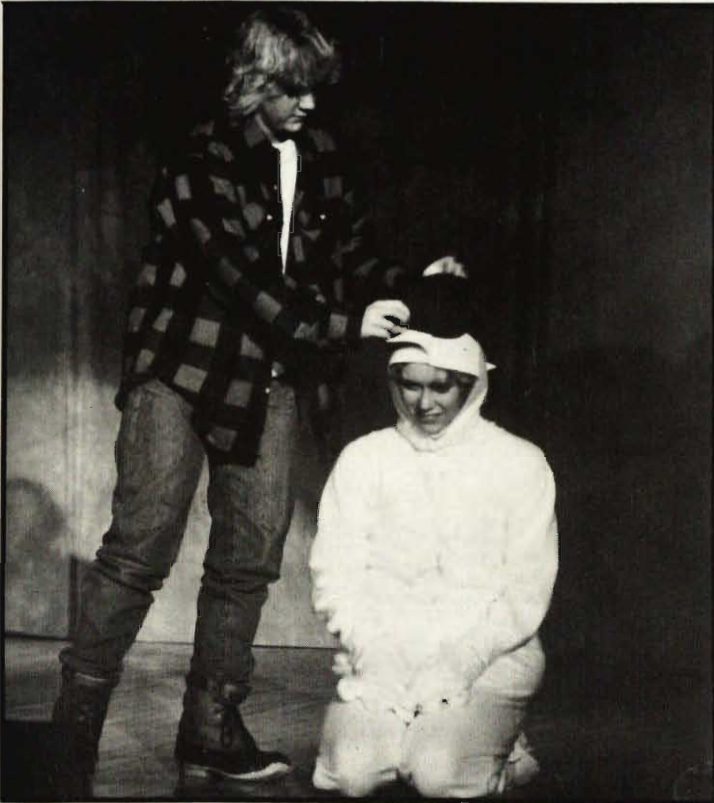
Phi Kappa Tau Presents-- "One Swing of the Bat"

Escape back to 1927 and relive the story of Baby Face Perkins when he struggles into adulthood by discovering how to realize his dreams.



Team members sing "The Modern Woman Song" to a rookie.

Photos by Brian Horen



When Norm the Yooper crowns Biff the Frozen Statue with his hunters cap, Biff comes to life!

Delta Phi Epsilon Presents-- "Biff the Frozen Dragon"

It's Winter Carnival at Michigan Tech and Norm the Yooper is building a statue of Biff the Frozen Dragon. When Norm places his old hunter's cap on Biff, he comes to life. Through Biff, Norm learns the true meaning of Carnival.



Some "hefty" girls from MSU visit Tech for Winter Carnival.

Sigma Tau Gamma Presents-- "The Golden Spike"

It's the mid 1800s and the west is still untamed. Meet some of the people who inhabit the wild west as together we build the transcontinental railroad.

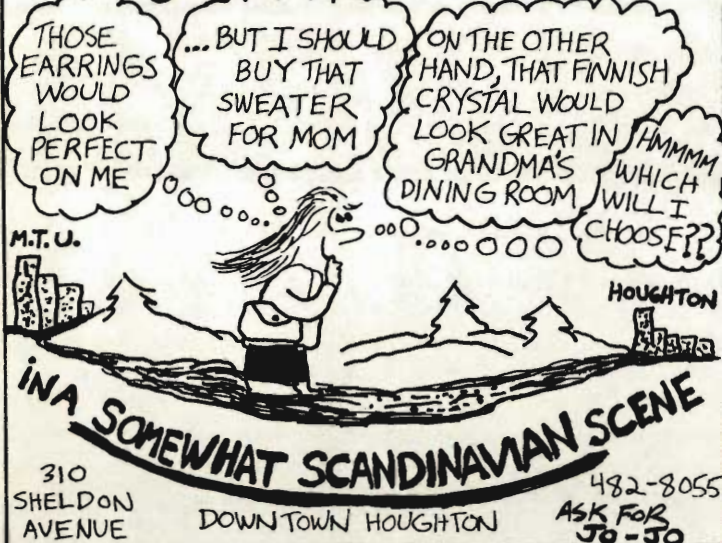


Maneesh and Ghandi attempt to wreck the Transcontinental R.R



Dexter, **Chris Gillanders**, a Tech engineer in charge of building the railroad, meets his sidekick, Dusty, **Rob Macaulay**.

SHOPPERS DREAMS



Best Western Copper Crown Motel



Indoor Pool
Sauna
Whirlpool

*Each Best Western
is independently
owned and operated*

235 HANCOCK AVENUE
HANCOCK, MICHIGAN 49930

(906) 482-6111
(800) 428-1234

CHIPPEWA MOTEL & RESTAURANT

US 41 • Chassell



• Kitchenettes • Color Cable TV • Next Door To Restaurant •

Restaurant Features

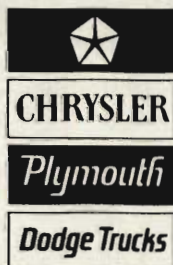
Breakfast
Lunch
Dinner

Keweenaw's Finest
Soup & Salad Bar
Open 7 Days A Week

— "6-Time Silver Spoon Award Winner" —

MOTEL 523-4611 Restaurant 523-4940

Northern Auto



625 Quincy Hancock
482-0620



Copper Country Mall

M-26 West of Houghton

Over 40 Stores
including
J.C. Penney's, K-Mart
and
Spurgeons



MALL HOURS
Mon. - Fri. 10 - 9
Saturdays 10 - 5
Sundays 12 - 5

SHOPPERS DREAMS



Best Western Copper Crown Motel



Indoor Pool
Sauna
Whirlpool

*Each Best Western
is independently
owned and operated

235 HANCOCK AVENUE
HANCOCK, MICHIGAN 49930

(906) 482-6111
(800) 428-1234

CHIPPEWA MOTEL & RESTAURANT

US 41 · Chassell



· Kitchenettes · Color Cable TV · Next Door To Restaurant ·

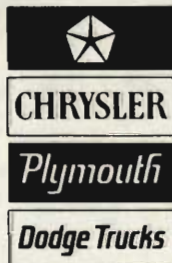
Restaurant Features

| | |
|-----------|--------------------|
| Breakfast | Keweenaw's Finest |
| Lunch | Soup & Salad Bar |
| Dinner | Open 7 Days A Week |

— "6-Time Silver Spoon Award Winner" —

MOTEL 523-6611 Restaurant 523-4940

Northern Auto



625 Quincy Hancock
482-0620



Copper Country Mall

M-26 West of Houghton

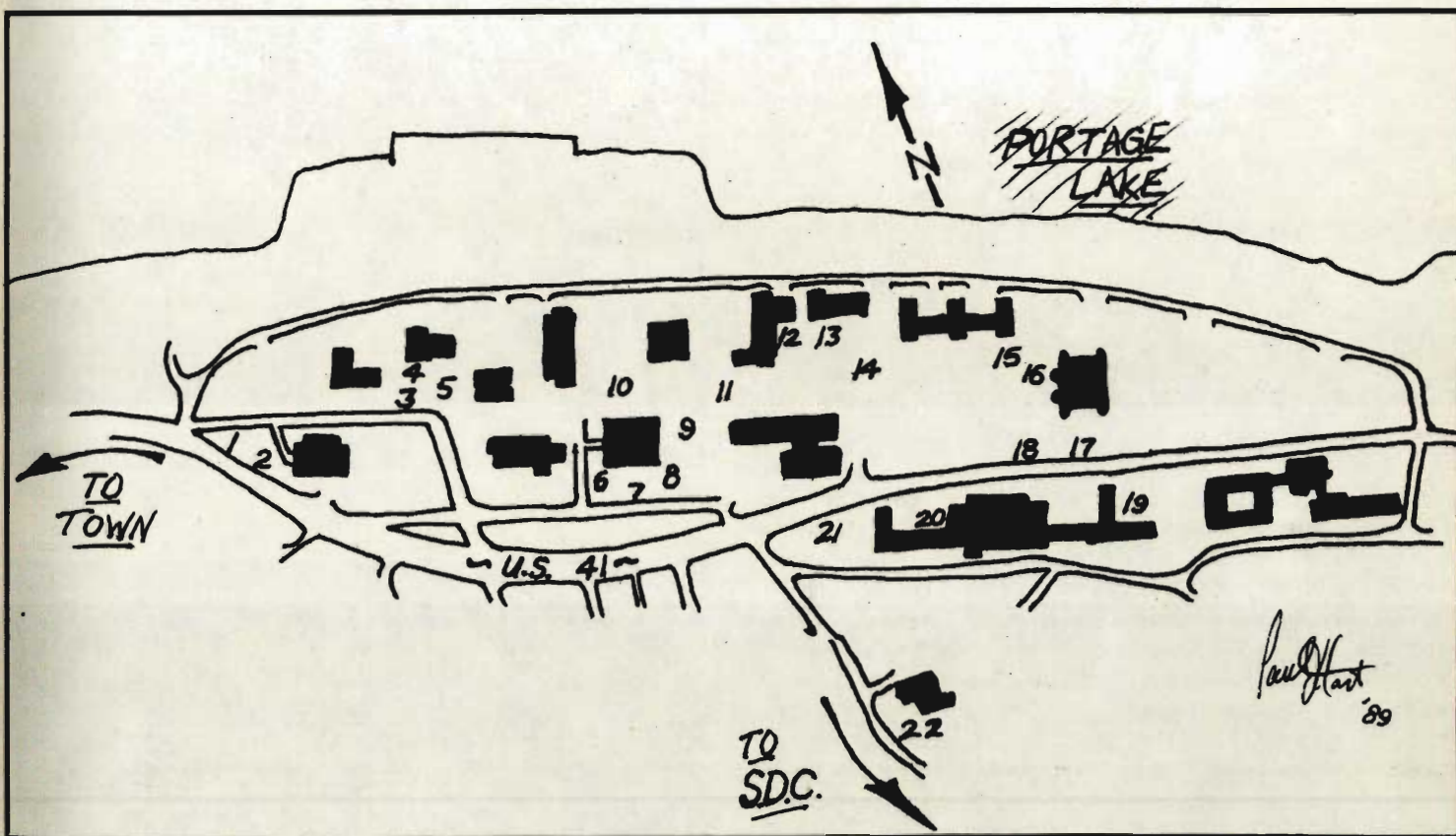
Over 40 Stores
including
J.C. Penney's, K-Mart
and
Spurgeons



MALL HOURS

Mon. - Fri. 10 - 9
Saturdays 10 - 5
Sundays 12 - 5

Statue Guide



Relax and Enjoy a stroll through the snow statue wonderland scattered across Michigan Tech's campus!

Beginning at the **Administration Building** are statues built by **Theta Chi Epsilon** (1), and **Tau Kappa Epsilon** (2).

Continuing down the road you will see statues built by **Lambda Chi Alpha** (3), **Air Force ROTC** (4), and **Army ROTC** (5) nestled in and around the **Old Academic Building**, **ROTC Building**, and the **ME-EM**.

On your way to the next statue, take a look at the progress on the **Memorial Union**, which is presently under renovation construction until next year. Follow the road next to the **Library**, and you will stumble upon statues built by **Phi Delta Chi** (6), **Sigma Phi Epsilon** (7), and **Alpha Gamma Delta** (8).

Completing your walk around the **Library** you will see **Bocce Ball's** statue (9) as well as the **Triangle Fraternity** entry (10).

Moving eastward through campus, past the **EERC Building** and the tilting landmark pine tree, you will see statue construction by **Team Zoe** (11). A little further, near the **Civil-Geo Building**, stand entries by **Mama's Boys** (12), **Delta Upsilon** (13), and **Alpha Phi Omega** (14).

The wooded area between **Douglass Houghton Hall** and the **Walker Arts and Humanities Center** is the setting for statues by **Douglass Houghton Hall** (15) and **Alpha Xi Zeta** (16).

Now make your way to **US-41**, and take a look at **Phi Kappa Theta's** statue (17), and the **Winter Carnival Welcome Sign**, constructed by **Theta Tau** (18).

Next, walk to the courtyard at the bottom of the hill by **Wadsworth Hall**, and view statue construction by **Incognito** (19).

This snow statue tour is completed once you see the entries by **WMTU** (20), and **Delta Sigma Phi** (21) (adjacent to **Wadsworth Hall**), and lastly, **St. Albert's** (22) on the way to the **SDC**.

Statue Building

The snow statue is arguably the most visible and memorable of all the elements of Winter Carnival. The structures strike awe into observers, as well as a sense of mystery. "How do students create these amazing statues?" observers ask themselves.

For the answer, many people point to **Delta Sigma Phi**, a fraternity that holds the distinction of building the biggest statue ever. President **Wes Lafortune** remarks, "Planning begins way before anyone is even thinking about Carnival. We start gearing up toward the end of fall term." The planning process begins with brainstorming sessions to generate ideas. The resulting list is then narrowed to the top three choices. Soon after, the seemingly endless supply of statue building equipment is brought out, tested, and repaired. Finally, the nightly crew schedules are planned and leaders chosen.

Statue work begins on the first day of classes after Christmas break. The first two weeks are devoted to building the basic structure, or "mass" of the sculpture. "Scoopers" push around the infamous "Yooper Scoopers" to gather snow into piles. Then it is put into buckets which are immediately thrown, brother-to-brother, down a chain and dumped into a plywood mould which forms the shape of the structure being built. Finally, "Stompers" compress this mass by simultaneously adding water and "stomping" on the snow as it is added. This process forms a very dense, tough structure which can support other pieces built on top of it.

The third week is "slush week." Slush is the very same stuff that is found on warm days - it's extremely wet, cold, and messy. "Next to the snow itself, slush is probably the most important part of the statue," says **Eric Norland**, a statue chairman. Because of its unlimited number of uses, slush is made continuously from this week until the end. To make it, snow is dumped into "slush barrels," where it is mixed with water. After this, it is loaded into "slush buckets" and transported to the rubber-gloved "slushers." Slushers slop it over everything and smooth it out to give the structure a finished look. Slush is also used to create details, contours, and shapes; it is the life-blood of the statue.

In the fourth week, all the fine details fall into place. This is when the statue starts looking like a piece of art rather than large piles of snow. Now is when the expert "carvers" show their stuff. Out come the machettes, hatchets, butter knives, and spoons - the snow artist's tools. Solid blocks of snow and ice are transformed. Bricks emerge out of walls, stones rise out of paths, and emotionless faces and bodies suddenly exude character. Finally, irons (many of them stolen from Mom at Christmas) are used to smooth the ice for a gleaming finish.

During the fourth week, the rush to finish up begins. The all-nighter is when it all comes together. Everyone stays out and works hard to polish things down to the smallest detail. Work is carried out to the last minute before final judging.

-Greg Fuller



Chuck, Jeff, Nick, and Tim, members of **Delta Sigma Phi** work hard dumping and slushing snow.

Photos by Julie McIlvenny



Watch out guys, it's a long way to the ground!

Class A



SIGMA PHI EPSILON *One Stop on the Dream to Freedom*



Photo by Matt Howard

1st Place Winner

The Underground Railroad, a network of idealistic Americans who secretly helped fugitive slaves reach the North. Without it, the dream of freedom for thousands of slaves would have remained frozen until Lincoln's Emancipation Proclamation and the close of the Civil War secured their liberty. Pictured here is a typical stop on the dangerous trip North.

While two vengeful slave owners pound at the door, chains in hand, the safehouse residents hide a runaway slave. As the hunted man dips below the floor, another behind the house is freed from his bonds. Also depicted is Abraham Lincoln, who knew that America's dream of "liberty and justice for all" hinged upon freedom for all and a united nation.



Photo by Matt Howard

Class A

DELTA SIGMA PHI

Ell-ICE Island--Gateway to the American Dream

2nd Place

For many immigrants who came to America, Ellis Island was their first stop to the land of opportunity. Coming across the oceans on boats, not unlike the one seen in the statue foreground, the immigrants felt the realization of their American dream begin. When they saw the Statue of Liberty, they knew their dream was coming true.

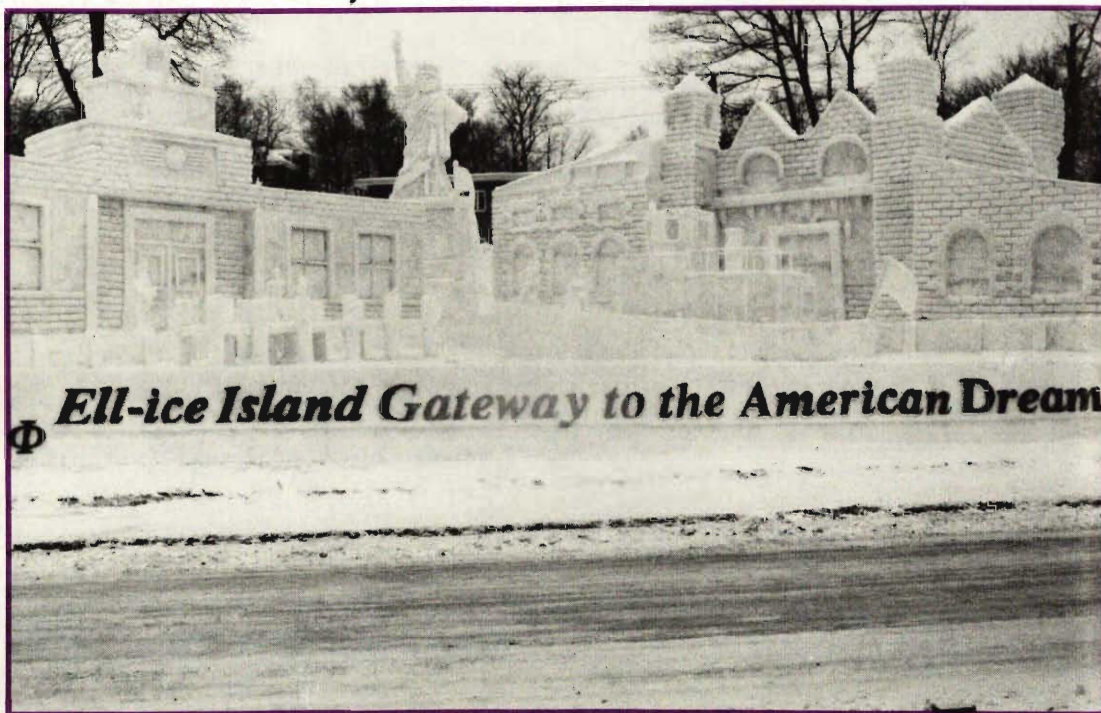


Photo by Julie McIlvenny

TAU KAPPA EPSILON

The First Trans'Ice'-Continental Railroad



Photo by Joe Manning

3rd Place

This scene portrays the face to face meeting of the Central Pacific Jupiter and the Union Pacific No. 119 at Promontary Point, Utah, on May 10, 1869. This is a shimmering shrine to the American dream of the first transcontinental railroad. The trains stand frigid as the photographer freezes this moment in time.

PHI KAPPA TAU

Rich Beyond our Wild'Ice' Dreams

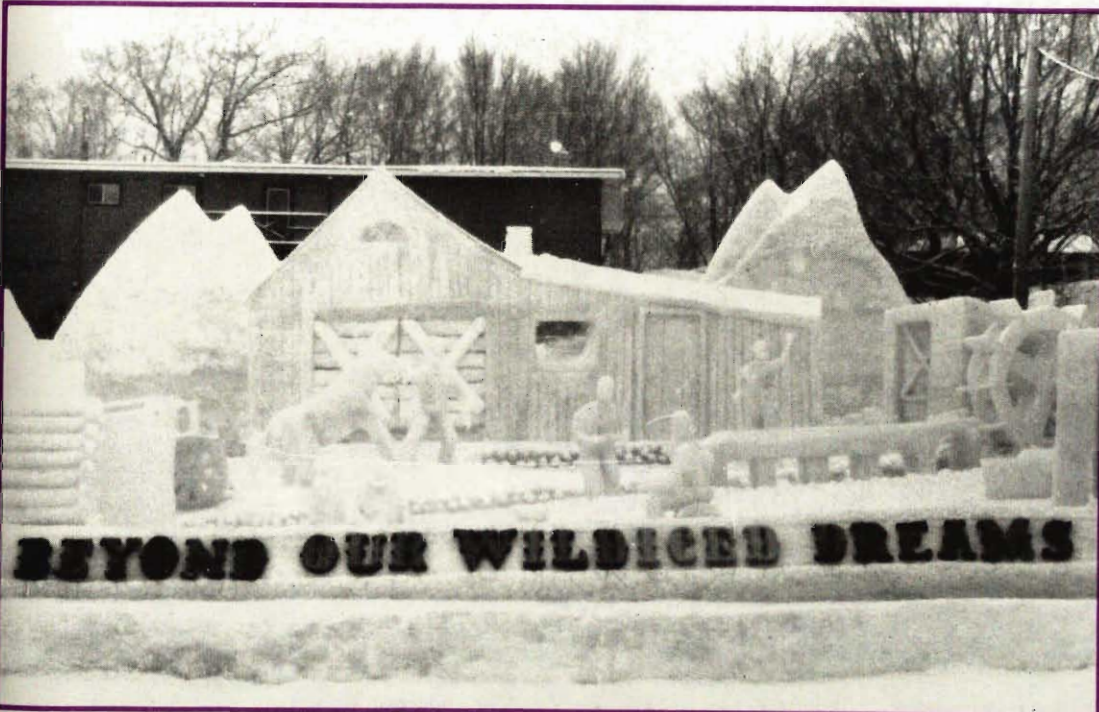


Photo by Joe Manning

4th Place

In the mid 1800s, America's dream was to strike it rich in the mountains of Northern California. In this scene, 49ers search the river in front of Sutter's Mill where gold was first discovered in 1848. The mountains behind Sutter's Mill provide an authentic view of the Sacramento Valley.

SIGMA TAU GAMMA

The Icy Night Before America's First Flight

5th Place

On December 17, 1903, Wilbur and Orville Wright made man's first powered flight. Here, the night before at the Wright Brother's bike shop, Wilbur is checking his calculations while Orville puts the last parts together. The upper wing is close to 2000 lbs. of snow.



Photo by Brian Horen

Class A

SIGMA PI

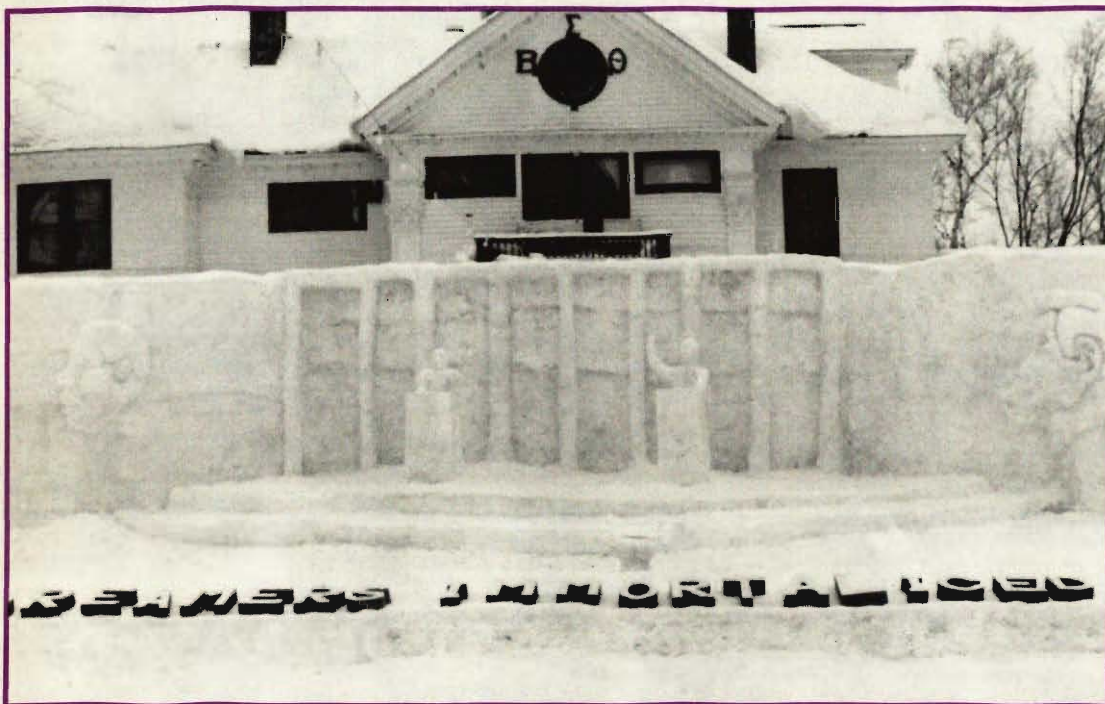
Cold Cash

In the development of America into a country, a dream was invisioned by all to have country where people could be free to have life, liberty, and a chance to pursue happiness. The prospect of BIG BUCKS and freedom enticed foreigners to come to America. This scene depicts a large quantity of COLD CASH created in a snow and ice enlargement of the U.S. currency.



BETA SIGMA THETA

Dreamers Immortal-Iced



Dr. Martin Luther King and John F. Kennedy were two contemporary dreamers who were taken before their time. Both had visions of the future--visions of how America should be. Here they have been immortalized in ice; their dreams have been immortalized by the American public.

Photos by Brian Horen

DOUGLASS HOUGHTON HALL

Walk of Life



Photo by Julie McIlvenny

Life is series of dreams starting from birth. The American dream starts as a child when you dream of toys such as teddy bears and tricycles. In your teen years, you dream of a car; and during college you dream of getting a job. Later come dreams of marriage and a family. This scene depicts these dreams.

LAMBDA CHI ALPHA

In 1492, Columb'Ice' Found His American Dream

One of the greatest discoveries in American history here cast before you in ice, is that of America itself. On the right, Columbus is shown snojobbing the Queen of Spain with his adventurous plan. Also shown are his three ships: the Santa Maria, the Nina, and the Pinta.

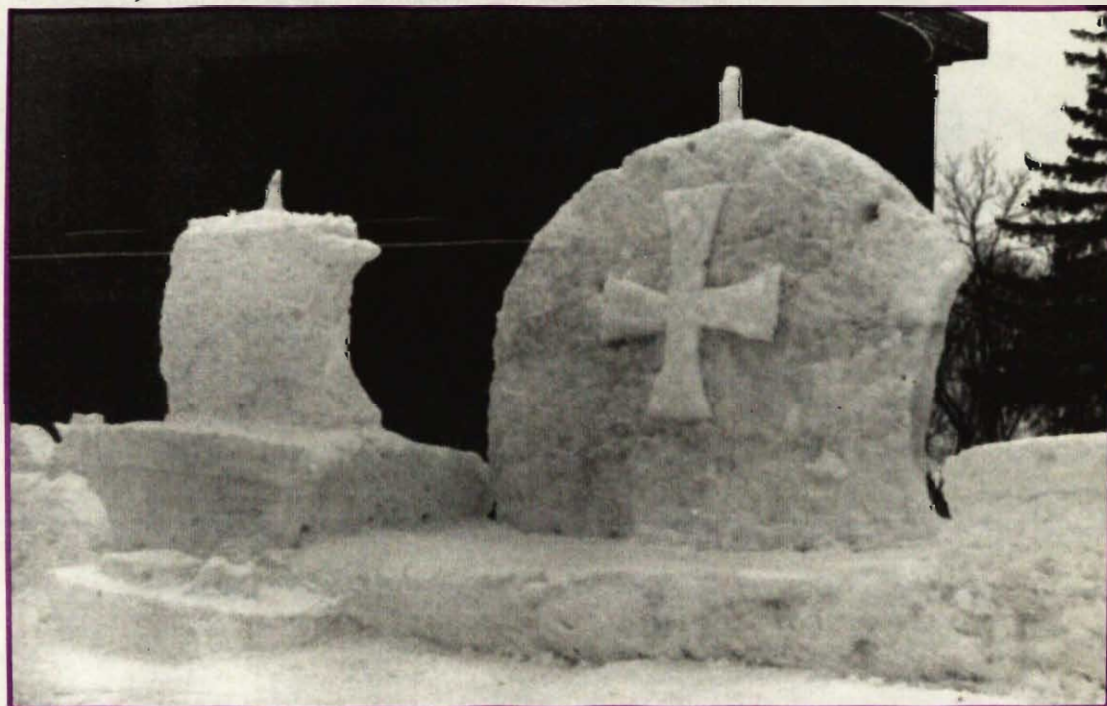


Photo by Joe Manning

Class A

DELTA UPSILON

How is this for a N'ice Dream

One, two Freddie's after you. Three, four better lock the door. Not even this little rhyme can help you, for it is in your dreams where Freddie comes alive. This towering Freddie is just waiting for his next victim's slumber. The faces bursting from his chest are the hopeless souls he has already claimed.

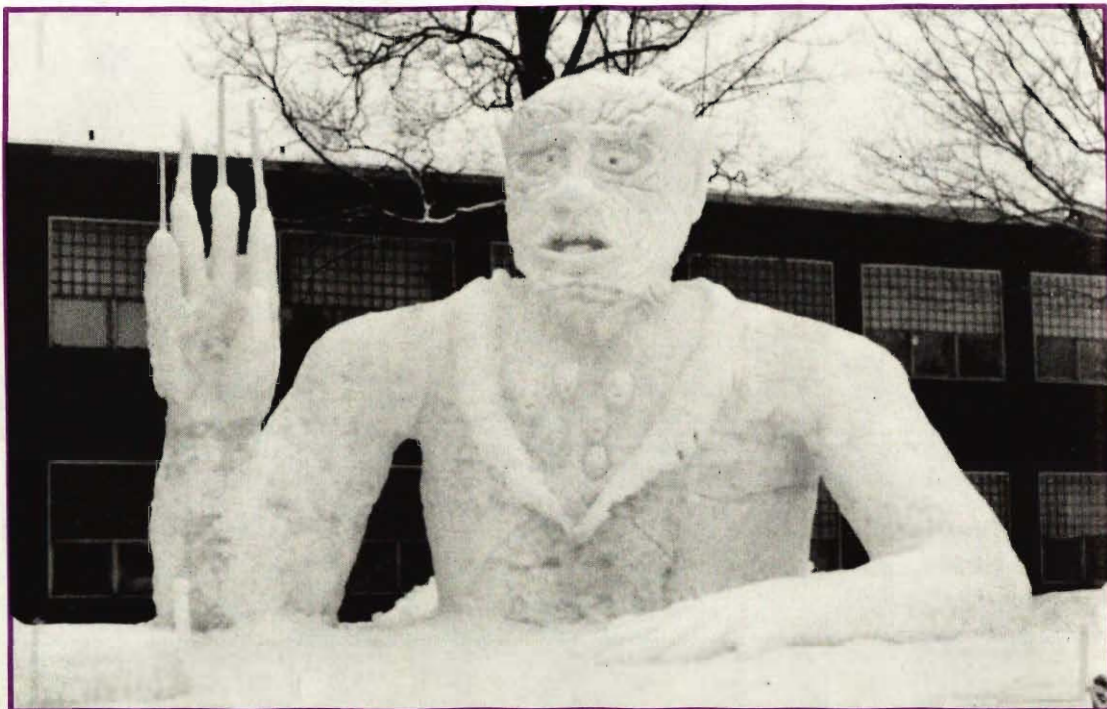


Photo by Matt Howard

PHI KAPPA THETA

Thy Prom'Ice' May be Seen



Photo by Julie McIlvenny

Before you stands a common Sunday morning gathering. One which has taken place since the first Christians set foot in the new country. Setting an example for the rest of the colonies, William Penn, leader of the Quakers wrote to Europe promising religious toleration in his land. In honor of Penn, we have builty you a scene, which for the Quakers has remained the same to this day.

Class B

TRIANGLE FRATERNITY

Icy Scenes of a Nation's Dreams



Photo by Matt Howard

1st Place

The children sleep secure knowing that their parents are watching over them; protecting and shielding them from danger in the same way as our government was to protect its people. A feeling of safety from the horrors of a tyrannical government was one of our founding fathers' dreams. The inspiration for this statue is the series "The Four Freedoms" by Norman Rockwell. Only snow is used in its construction.

SIGMA KAPPA UPSILON MU

Thar's Cold in Them Thar Hills

2nd Place

The gold rush of 1849 was an early American Dream. Young and old alike ventured west for mountains of the yellow metal. For some, the trek was rewarding, for others no claims were staked. The statue depicts a common gold camp. The horse in the background is getting a break from pulling the wagon through the mountains. The one pioneer fishes for dinner while the other continues with the rhythmic chore of gold panning. No artificial supports are used in this statue.



Photo by Brian Horen

Class B

AIRFORCE ROTC

Full Service

3rd Place

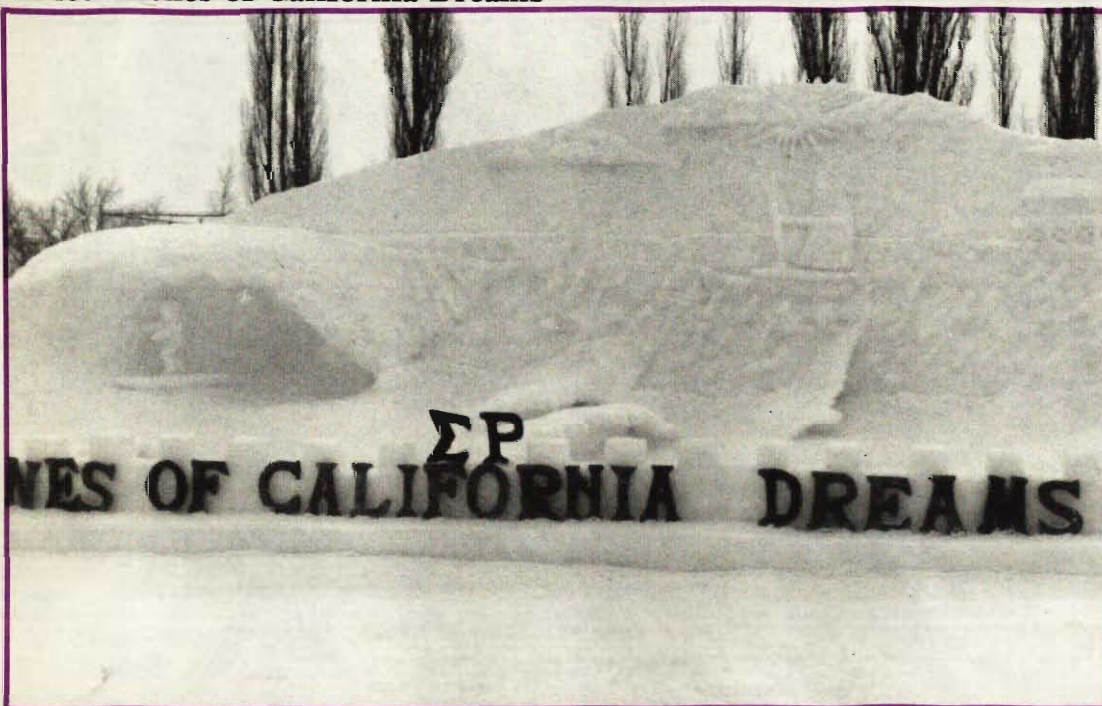
With the successful launch of America's space shuttle, the exploration of space is once again a dream of all Americans. Here we see the space shuttle receiving full service from a friendly Martian. After checking the oil and cleaning the windshield, the Martian refuels the shuttle, preparing it for another long journey through the icy depths of space. Snow is the only material that has been used in the construction of the statue.



Photo by Joe Manning

SIGMA RHO

N'Ice' Scenes of California Dreams



4th Place

Icy winds of a frigid winter have us dreaming of a warm California scene. We have created an icy representation of our dream vacation. Our statue depicts a warm and tranquil California beach to which the icy winds of Chassell cannot reach. We lay out on our beach free of hassle, or we could be creative and build a sand castle. For now our vacation is out of reach, so we'll keep dreamin' of that California beach. Our statue is constructed of something we all know, hand-moved 100% virgin Chassell snow.

Photo by Brian Horen

ALPHA PHI OMEGA

East Meets West - A Fant'Ice'tic Moment



Photo by Matt Howard

The transcontinental railroad spanned the Great Plains and the majestic Rocky Mountains. It stands in testimony of the spirit of the American Pioneers. The Golden Spike, linking the east and the west rails, symbolized the completion of the project. APO shares in the spirit of the early American Pioneers in our recreation of this American accomplishment. In our tradition of service, APO will be serving hot cocoa and donut holes out of the rear of one of the locomotives.

TEAM ZOE

E Plurib'Ice' Unin

The motto of our American monetary system is pushed to the limit by these ambitious little elves in this icy portrayal. Everyone dreams of making a fortune, but this might not be the way our forefathers had planned it. Carving a coin from this large chunk of ore, these ambitious capitalists are exemplifying teamwork, courage and dedication while striving toward their heart-set goal.



Photo by Matt Howard

Class B

BOCCE BALL CLUB

The Bocce Ball Tournament is a Winter Carnival tradition. This year, the Carnival queen, Mary Walstrom, reigned over the tournament which was held on Friday.



Photo by Matt Howard

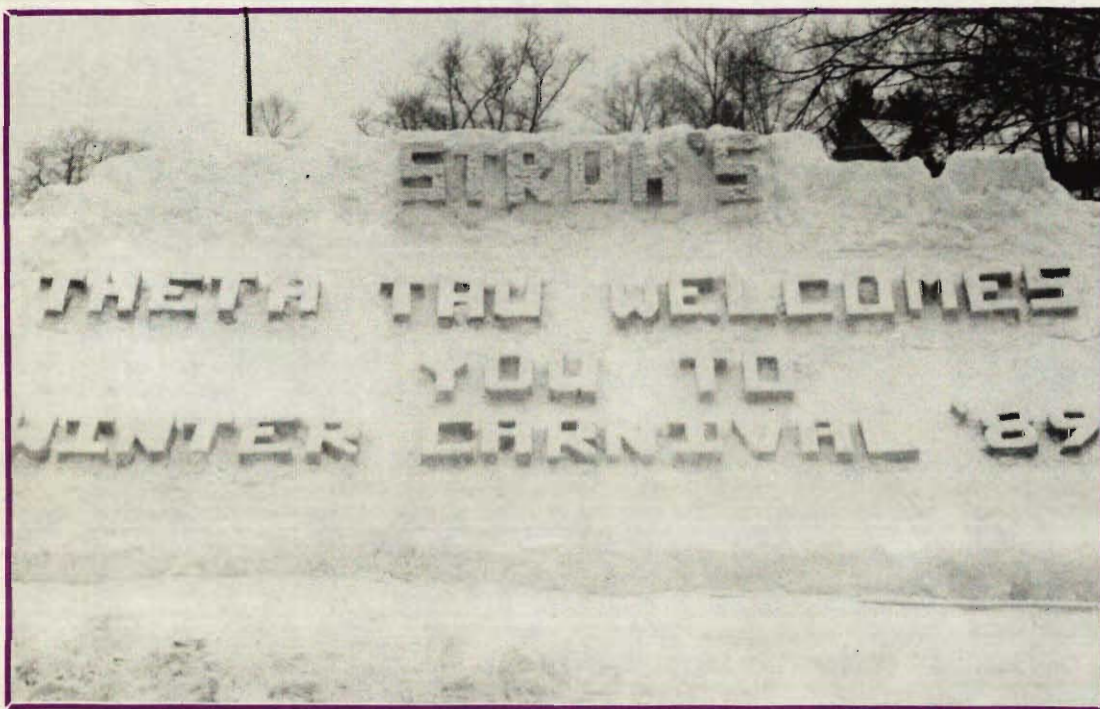


Photo by Julie McIlvenny

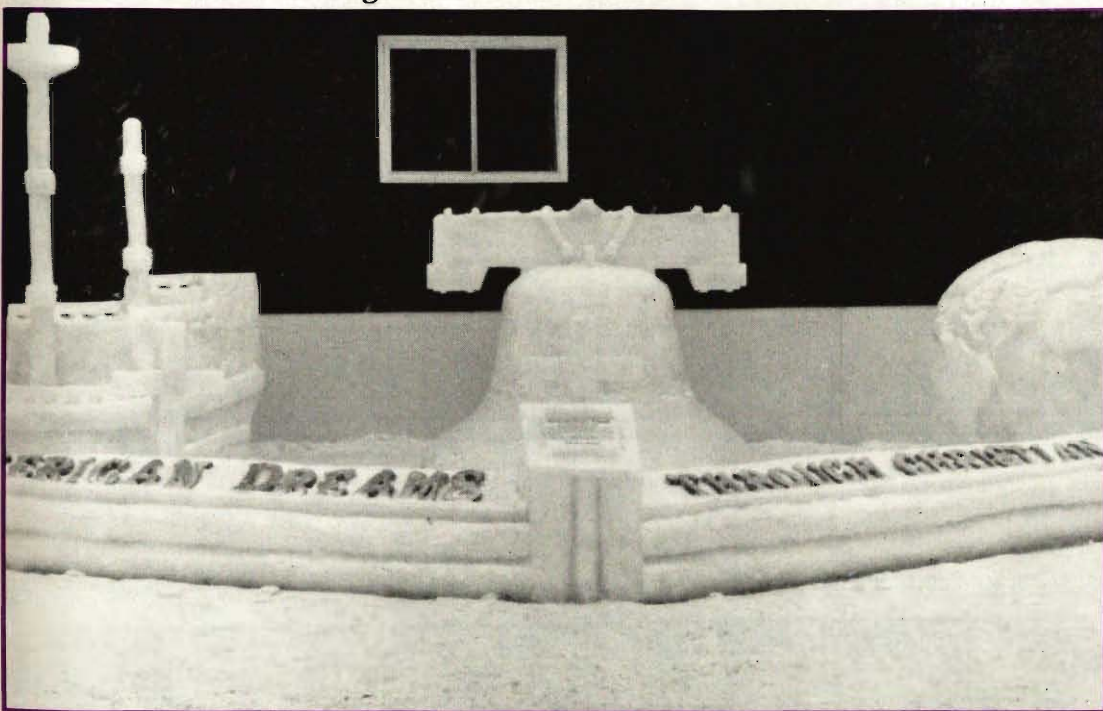
THETA TAU

Every year Theta Tau has the job of building the "Welcome" statue to greet visitors driving into town on U.S. 41. This year, Stroh's Brewing Company joins in the welcome.

Class C

WESLEY HOUSE

American Dreams through Christian Themes



Photos by Matt Howard

1st Place

Three important dreams that Americans have had for many years are religious freedom, independence, and world peace. These dreams are represented by the Mayflower, the Liberty Bell, and the World Globe with olive branches, respectively. However, to achieve world peace it is clearly evident that Christ and the cross must come first in every nation. Until then the cross remains behind and overshadowed by the world globe.

INCOGNITO

There's Nothin' Like Cold Cash

2nd Place

Joe Incognito, a graduate of MTU, has happily returned to the beauty of the Copper Country. Joe proudly cradles his Lotto winnings--a check for 10 million dollars! He stands "humbly" beside his 150 m.p.h. snowplowing speedster. They are backdropped by his sprawling igloo mansion flanked with immaculate evergreens.

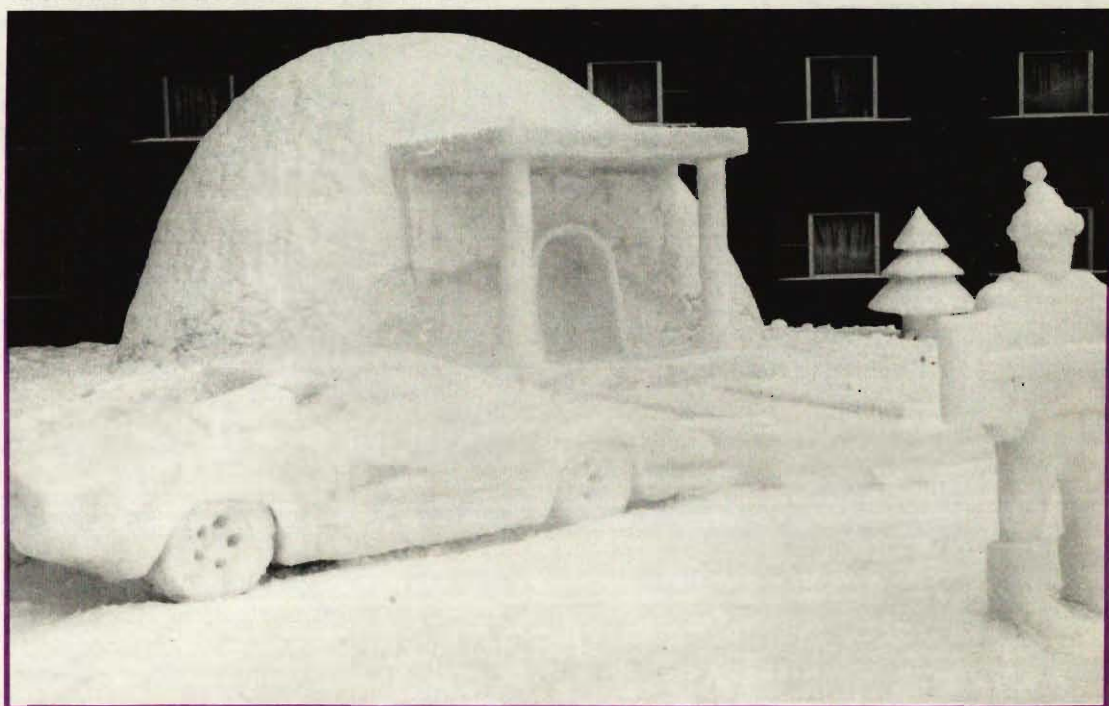


Photo by Julie McIlvenny

Class C

ST. ALBERT THE GREAT

Frosty Visions of Baraga's Mission

3rd Place

Bishop Frederic Baraga and his two native American guides land their canoe on the shores of Portage Lake. While Bishop Baraga and one of his guides wait in the canoe, the second guide points to a vision of the future--St. Albert the Great. Two MTU students stand in front of the chapel reflecting over 25 years of history of their church.



Photo by Julie McIlvenny

ARMY ROTC

America's Icy Entry to Space

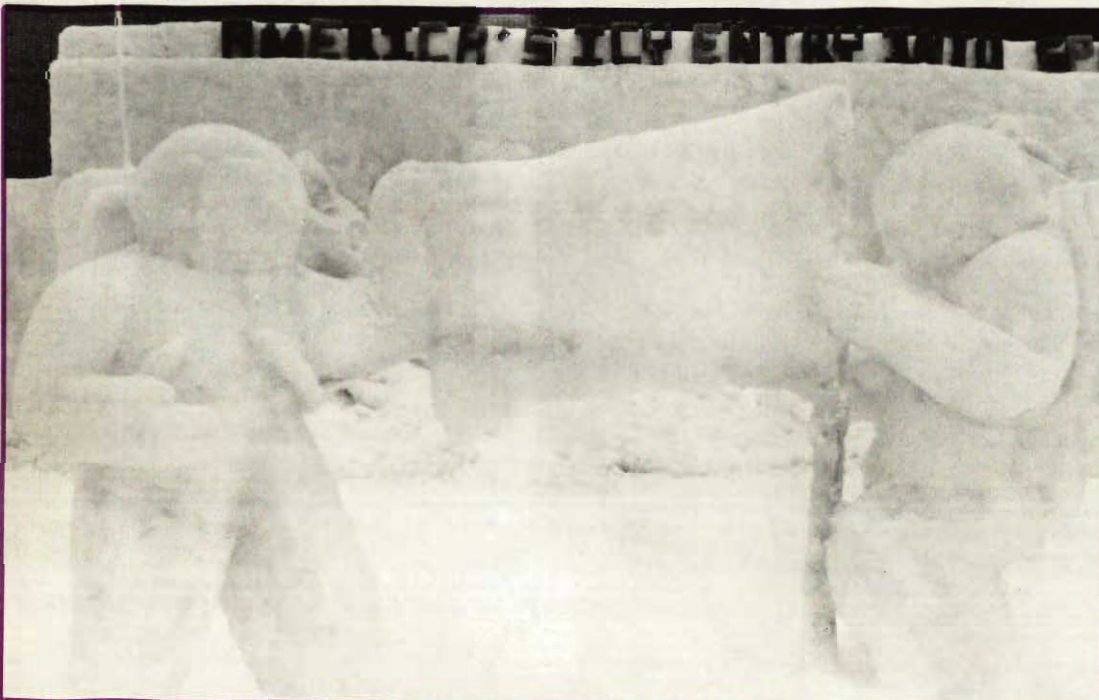


Photo by Joe Manning

4th Place

For ages mankind has dreamed of the wonders and conquest of space. July 20, 1969 was forever frozen into history as Neil Armstrong, Edwin Aldrin, and Michael Collins brought America's dream to life, completing mankind's first journey to the moon. As Eagle-One looms on the icy moonscape, Armstrong and Aldrin pause briefly from their mission to plant the American flag.

WMTU



5th Place

Going for a cruise in your 1957 chevy convertible and listening to the radio was all-American favorite pastime. Our snowy convertible depicts this pastime.



Photos by Julie McIlvenny

Class D

ALPHA SIGMA TAU

An Icy Scene of a Childhood Dream

1st Place

A chill in fright before you see, for not all dreams so sweet may be. Dreams bring chills and frights so cruel, while beasts under beds do drool. But a child awakens in his room to find his faithful teddy bear, pennants here and there, a baseball bat, and a basketball—surely American symbols all. And so he calms his icy dream.

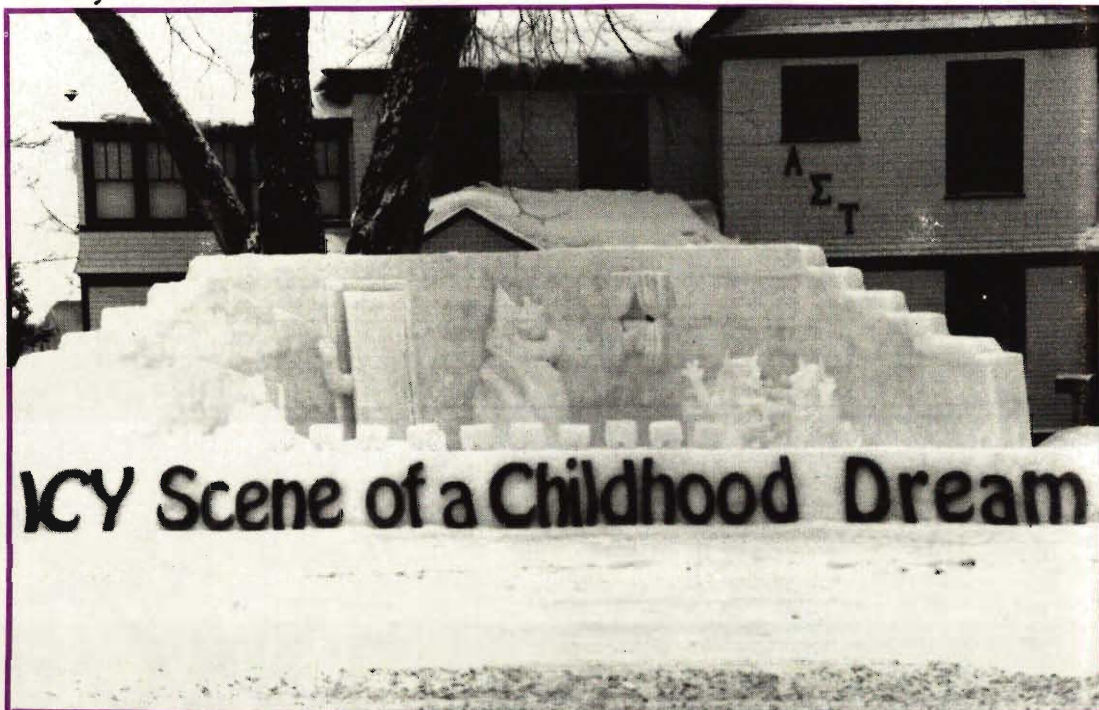


Photo by Brian Horen

ALPHA GAMMA DELTA

A Yuppies Parad'Ice

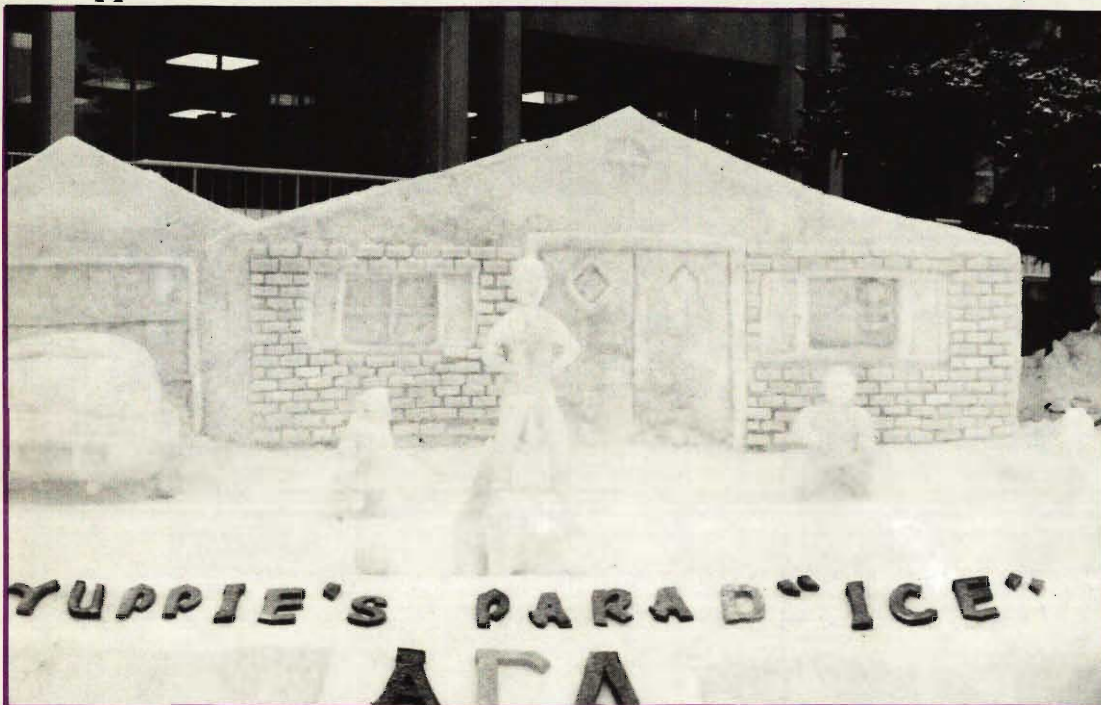


Photo by Matt Howard

2nd Place

The dream of young professionals today is to lead a fulfilling life with 1.5 children, 2 cars, and a beautiful home with a white picket fence. Our suburban scene shows "Mom" gazing out the window at her family. "Rover," the family dog, is seen ready to catch the ball which was thrown by one of the children. "Dad" is on his way to work with his briefcase in hand. The family wagon is parked in the garage. Flowers line the front of the house and white picket fence.

PHI DELTA CHI

A Dream of Independ'Ice'



Photo by Matt Howard

3rd Place

Our statue represents the American dream with the figures from the painting "Spirit of 76." The three men are revolutionary soldiers leading a parade of victory. The first carries the flag of the new nation, the second beats the rhythm for future generations, and the third plays the fife which leads a celebration of independence. Behind the three patriots stands the American flag, a symbol of their victory in the fight for independence and freedom for all mankind.

ALPHA XI ZETA

The Olymp'Ice' Dream

4th Place

Our Olympians stand with a chill of pride as they have realized their Olympic dream. The game of all games is played by the best amateur athletes the world has to offer. These athletes are brought together under the pretense of world peace and friendship. Here we have the three medal winners watching their flags being raised into place.



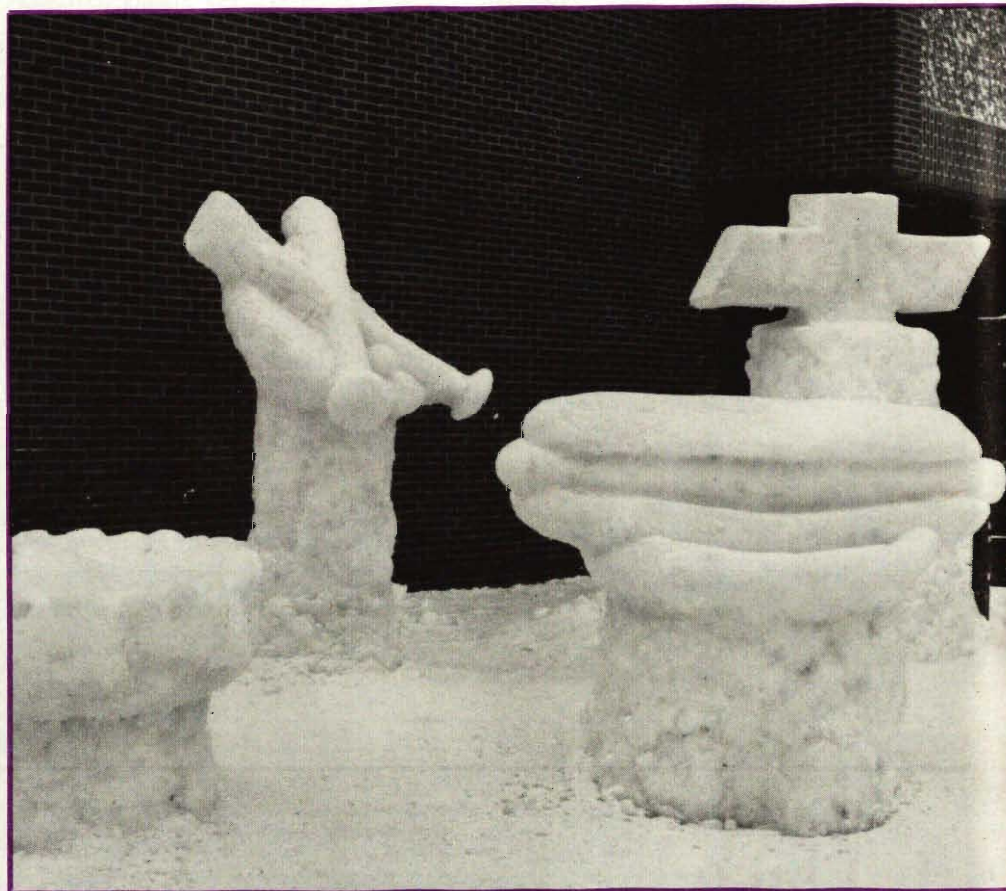
Photo by Julie McIlvenny

One-Nighters

Sammy Award

The Sammy Award is given by the *Pictorial* staff to the One-Nighter statue that best represents the spirit of Carnival and its theme. This year's winner is **The International Club** with its statue depicting the American symbols: Baseball, Hot Dogs, Apple Pie, and Chevrolet. Congratulations on a good nights work!

Photo by Matt Howard



Photos by Julie McIlvenny

**Copper Country
Ford-Lincoln-Mercury**

Always a good selection



Bring in your best
deal and we will
meet it or beat it

Your volume dealer
with reliable service



Next to
Copper Country Mall
M-26 Houghton



Marie's

482-8650

**DELI &
Gourmet**



*Come Visit Our New Expanded Menu for
Breakfast, Lunch, and Dinner
It's Not Just A Meal-- It's A Treat!*

WE CATER

Everything Homemade Including Soups,
Breads, Desserts, Sausages, and Yogurt

**The Winter Carnival Pictorial
would like to thank
the businesses that advertised
in this issue.**

MICHIGAN TECH BOOKSTORE

"A Bookstore and a whole lot more."

Hours: Mon.- Fri. 8 a.m to 5 p.m.

Greeting Cards
Insignia Gifts
School Supplies
Back Packs



Computer Supplies
Calculators
Paperbacks
Textbooks

Remember we buy used textbooks

**NOW LOCATED IN THE ROTC BUILDING
(906) 487-2410**



Husky Hockey

Hockey in the U.S.

can be traced back through the years to the Keweenaw Peninsula, which has been referred to as the birthplace of organized hockey in the U.S. Out of this has come the Michigan Tech Hockey Huskies, undoubtedly one of the richest traditions in college hockey.

From their first intercollegiate game, a 3-0 shutout of the University of Michigan to last year's most improved team in the Western Collegiate Hockey Association (WCHA), the Huskies have produced three NCAA championships as well as four second place finishes. The Huskies have also taken top honors in the WCHA seven times in their 33 years of affiliation.

The Great Lakes Invitational is another event where the Huskies have left their mark. Since its inception in 1965, Michigan Tech has won the tourney nine times, most of any participating school.

Even with all the success of year's past, perhaps the greatest moments of a challenge have been brought forth during the annual Winter Carnival series. The University of Minnesota was the first to challenge the Huskies during Winter Carnival in 1934, and opponents have not had an easy time throughout the decades. Since 1960, Michigan Tech has compiled an incredible 47-10-1 record in the two-game affair.

Photo by Photo Services



Darci Martini and Damian Rhodes block an opponents goal.



Goalie, **Damian Rhodes**, stops the puck!

Photo by Photo Services

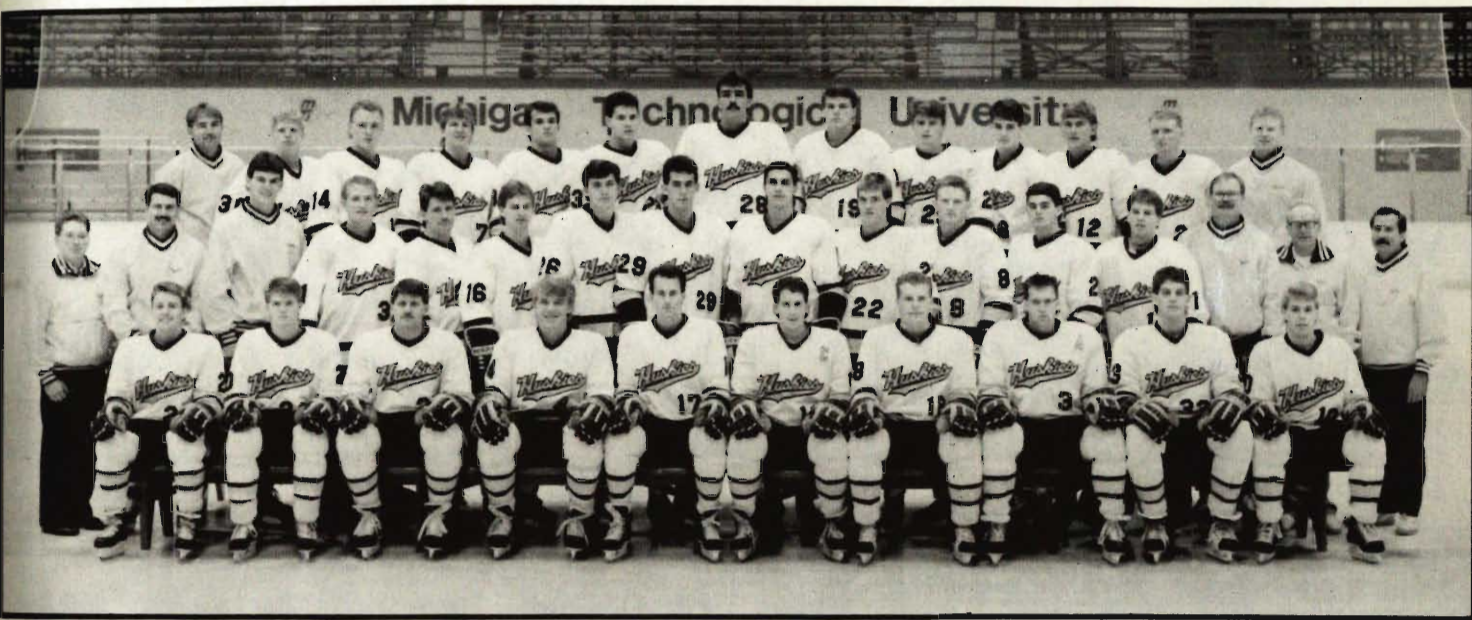
In 1966, **Governor George Romney** presented yet another incentive for the series when he initiated the **Governors Cup**, a trophy to be awarded to the team which scores the most goals in the series. The University of Michigan was the first to challenge the Huskies for the cup. Although the series was split, Michigan Tech had a 5-4 total goals margin to win the prize from the Wolverines. Since that initial cup, the host Huskies have turned away 18 of 21 opponents that have vied for the cup.

The 1984 season marked the debut of the current trophy, the **John MacInnes Memorial Cup**. The \$50,000, 28-inch cup is named after the late Michigan Tech coach who is nothing short of a legend in college hockey. When MacInnes retired after the 1981-82 season, he was college hockey's winningest coach with 555 career wins in 26 years and three NCAA championships.

This year the Huskies return to Winter Carnival action when they host Minnesota, their first Carnival opponent from over 50 years ago. The Golden Gophers, considered one of the nation's top teams, split with the Huskies in their first two games earlier this season and have spent the entire season at the top of the WCHA. Michigan Tech will have to overcome a strong defense and excellent goaltending if they are to triumph.

If there ever was a time or a slight advantage for the Huskies to pull it off, the magic of Winter Carnival may be the time to do it! The Hockey Huskies will play against Minnesota Friday, February 3 at 7:30 p.m. and Saturday, February 4 at 1:30 p.m. at the SDC Ice Arena.

--Jeff Wendling



Bottom Row--L-R: Shawn Harrison, Ron Rolston, Rob Cederberg, Steve Wendorf, Richard Novak, Tom Bissett, Scott White, Jamie Russell, Jeff St. Cyr, Kip Noble
Middle Row--L-R: Manager Dave Evenson, Assistant Coach Bruce Horsch, Grad. Assistant Russ Becker, Damian Rhodes, Dave Szymanski, Jay Luknowsky, Peter Grant, Rob Tustian, Rob Pallante, Kelly Hurd, Jim Carroll, Brent Ketzenberger, Geoff Sarjeant, Assistant Coach Darcy Way, Equipment Supervisor Celes Wercinski, Trainer Chris Ipson.
Back Row--L-R: Head Coach Herb Boxer, Sean Skinner, Dennis Young, Tony Federighe, Jamie Steer, Greg Parnell, Darcy Martini, Davis Payne, Tim Hartnett, Reid McDonald, Jay Boxer, Owen Zeumer, Grad. Assistant Doug Harris

Photos by Photo Services



No Name, Pos

- | | |
|------------------------|---------------------------|
| 1 Geoff Sarjeant, G | 18 Scott White, D |
| 3 Jamie Russell, D | 19 Davis Payne, LW |
| 4 Steve Wendorf, D | 20 Ron Rolston, LW |
| 5 Rob Pallante, D | 21 Brent Ketzenberger, LW |
| 6 Reid McDonald, F | 22 Kelly Hurd, RW |
| 7 Tony Federighe, LW | 23 Greg Parnell, C |
| 8 Jim Carroll, LW | 24 Shawn Harrison, C |
| 9 Jamie Steer, RW | 25 Tim Hartnett, F |
| 10 Kip Noble, D | 27 Rob Cederberg, RW |
| 11 Tom Bissett, C | 28 Darcy Martini, D |
| 12 Jay Boxer, F | 29 Rob Tustian, RW |
| 14 Dennis Young, C | 30 Sean Skinner, G |
| 15 David Szymanski, RW | 31 Damian Rhodes, G |
| 16 Jay Luknowsky, C | 33 Jeff St. Cyr, D |
| 17 Richard Novak, RW | 34 Owen Zeumer, G |



Rob Tustian moves the puck closer to a goal.



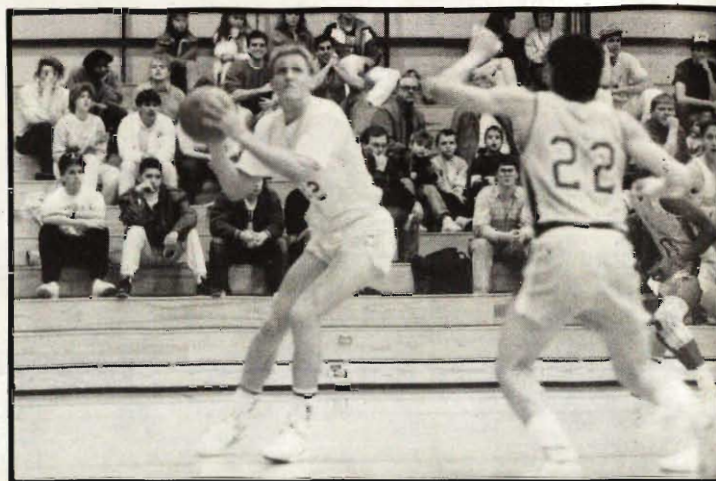
Men's B'Ball

A good way to describe the Michigan Tech's mens basketball team would be to say they are young and learning as the season progresses. The team has only returned one full-time starter from last year, **Jeff Johnston**. Johnston is the point guard and captain of the squad. In two years, he has become Tech's all-time assist leader with 323 assists and last year, he set the single season assist record with a total of 183 assists.

Jason Willman, another full-time starter, has done a good job in the middle. Willman is tough on the inside and does not back down to anyone. Other starters for the Huskies have been **Pete Hoffman**, **Willie Wesley**, and **Mike Wilson**. Hoffman, a first-year freshmen, has been an important cog in Tech's offense. Weley is noted for his good defense as well as his scoring. Wilson, the other guard, is probably the quickest player on the team.

Ron Harper and **Gene Seets** are Tech's other main players. Harper is an excellent jumper who can get up with just about anyone in the league. Seets is also a good jumper.

Rounding out the squad are **Andy Van Hoef**, **Todd Fewins**, **Rich Ahonen**, **Karl Fiebich**, and **Shawn Zimmer**.



Jason Willman eyes up the hoop.

Earlier in the year the Huskies fought a 5-2 record out of the conference until their tough GLIAC season started. Though they went winless early in the GLIAC, it was deceiving because the frontrunners, Ferris State, and Grand Valley State, were lucky to escape Tech with wins as the Huskies fell in the end in both games. Head coach, **Geof Kotila** and his assistant coach, **Kevin Luke**, are happy with the way the team has come around at mid-season. This year is one of rebuilding for the Huskies as every player is expected to return next year.

The mens team faces two GLIAC foes over Winter Carnival. They play Hillsade on Thursday, February 2 at 8 p.m. On Saturday, February 4, they take on Northwood at 4:30 p.m.

--Doug Leisenring



Jeff Johnston tries to evade the defense and make a basket.



First Row--L to R: Manager David DiPasquale, Todd Fewins, Shawn Zimmer, Tony Pappadakis, Jeff Johnston, Mike Wilson, Gene Seets, Willie Wesley
Second Row--L to R: Head Coach Geof Kotila, Ron Harper, Rich Ahonen, Jason Willman, Karl Fiebich, Andy Van Hoef, Pete Hoffman, Grad. Assistant, Steve Hansen, Assistant Coach Kevin Luke

Photos by Photo Services

Women's B'Ball



D'Andra Poyfair-Walter takes the ball up the court.

Tech's program is really coming back. In 1987-88, the team won the most games in a single season in six years and this year, the team is on a pace to break that mark. With their good blend of experience and coach, **Kevin Borseth**, they should be able to hang tough on the inside against some of the bigger teams.

Coach Borseth is really excited about the season and has reason to be. Earlier in January this year, the womens team beat Grand Valley State and Ferris State, two teams they had never conquered at home. This is just the beginning of all the things coach Borseth and his assistant, **Mike Williams**, hope will happen this year.

The Huskies want to be somewhere in the hunt in the upper division of the Great Lakes Intercollegiate Athletic Conference (GLIAC) and they have an important conference game during Winter Carnival which may help them climb to the top. On Thursday, February 2 at 6 p.m., they will take on Hillsdale. Their second Carnival game is against nonconference opponent, Northwood, on Saturday, February 4, at noon.

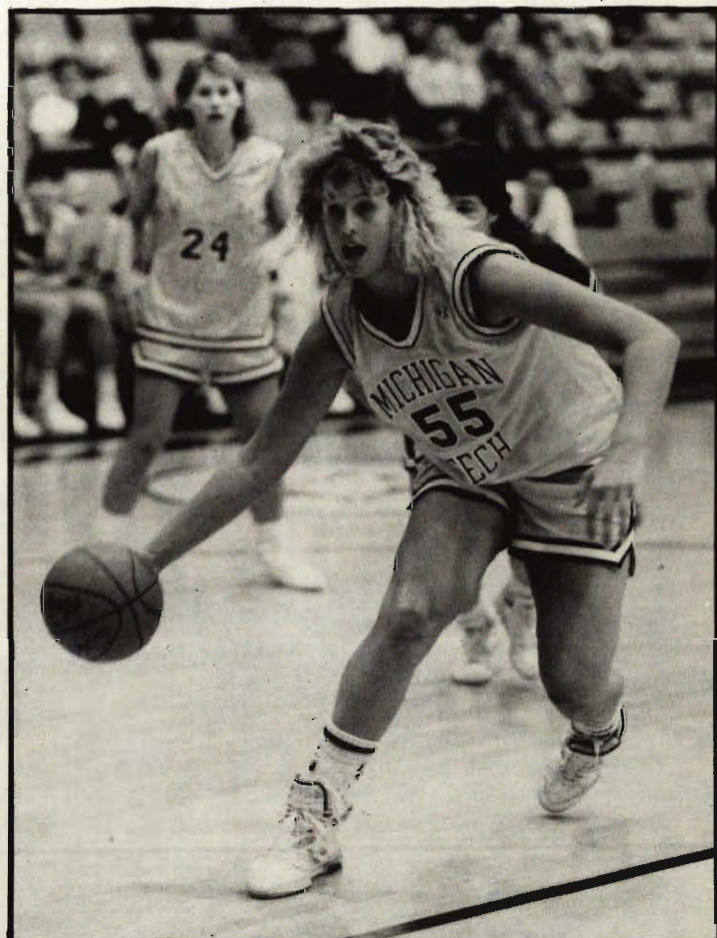
--Doug Leisenring

Unlike other years, this year, the Michigan Tech women's team can actually claim that experience is on their side. While they do have six freshmen on the squad, they also have some leaders who have been around and can show them the ropes.

Tech's four main starters this year have been **Shannon Bartos**, **Cheri Meier**, **Carie Pejka**, and **D'Andra Poyfair-Walter**. Meier, a good shooter and rebounder, is leading the team in scoring with 12.5 points per game. Poyfair-Walter, point guard and four-year starter, leads the team in assists and is always a threat to score. Bartos is the other guard and a good outside shooter. Pejka is a freshmen forward who has been shooting solid numbers all year.

Pam Fitzgerald, **Laurie Kissel**, **Michelle Pearson**, and **Adria Schuldt** are the spot starters and main players off the bench. Rounding out the squad are **Niki Diehm**, **Lori Prast**, **Julie Rumpz**, and the injured **Darla Innes**.

Photos by Photo Services



Michelle Pearson makes a fast break!



First Row--L to R: D'Andra Poyfair-Walter, Carie Pejka, Laurie Kiessel, Julie Rumpz, Cherie Meier, Shannon Bartos, Kristin Hagar, Niki Diehm
Second Row--L to R: Assistant Coach Mike Williams, Connie Pleshe, Darla Innes, Michelle Pearson, Pam FitzGerald, Adria Schuldt, Lorie Prast, Head Coach Kevin Borseth

"Your Visit to the Keweenaw isn't complete without a visit to..."

Suomi

Home Bakery
& Restaurant

with

Breakfast All Day
Finish Specialties
Fresh & Frozen Pasties
Homestyle Cooking
Bakery



Mon- Fri 6 to 6 Sat 6 to 5 Sun 7 to 2
Located under the Cover Street-54 Huron St.
(906) 482-3220



**PENINSULA
TRAVEL SERVICE Ltd**

A Full Service Agency

902 College Ave.. (Franklin Square)
Houghton, Michigan 49931

(906) 482-0324

Convenient Free Parking
Travel Packages Available

Hours: Mon-Fri 8:30-5:30
Sat 9:00-1:00

HOUGHTONS NEWEST RESTAURANT



**Kentucky
Fried
Chicken®**

1301 W. Memorial Drive (M-26)
On the way to the Copper Country Mall

Piccadilly's Circuits

Your **Radio Shack** Dealer

COMPUTERS

- Home, Educational
- Tandy IBM™ Compatibles
- Software & Support
- Disks & Disk Cases

AUDIO EQUIPMENT

- Home Stereo Systems
- Car Audio
- Portable Audio
- PA Systems
- Tapes & Accessories
- Cables & Plugs
- Bulk Speakers

CONSUMER PRODUCTS

- Calculators - HP, Desk Top
- Portable, Printing
- Batteries - Rechargeable
- Special, Adapters
- CB Equipment, Walkie-Talkies, Scanners

PHONE EQUIPMENT

- Phones; Cordless, Feature
- Novelty
- Answering Machines
- Cords, Jacks, Hardware

VIDEO EQUIPMENT

- VCR's & Enhancers
- Cab/e TV Supplies
- Antennas & Amplifiers

ELECTRONIC SUPPLIES

IC's, Transistors, diodes
resistors, capacitors, inductors,
switches, transformers
relays, fuses, buzzers, bulk
speakers, project boxes
battery holders, wire &
cable, connectors, books
Soldering & PC Board Supplies

TEST EQUIPMENT

- Multimeters, Ammeters
- Battery Testers
- Leads & Probes
- Power Supplies
- Soldering Supplies
- Tools

Portage Plaza
Highway M-26
Houghton, MI 49931
(906) 482-7800

TREAT
YOURSELF!

To A
Snowmobile
Adventure in
Michigan's Keweenaw

SKIERS
PARADISE

Surprise
Amenities



906-482-5000
1-800-528-1234

RELAX
at the
BEST WESTERN
KING'S INN

U.S. 41 Downtown
Houghton, MI 49931

- Indoor Pool
- Whirlpool
- Sauna
- Meeting Rooms
- King-Exec Rooms

Special Events



Photo by Matt Howard

Special Events

competition is fun for everyone and an important part of Winter Carnival. Student organizations recruit their best athletes in an effort to place high in their class ranking. But more importantly, Special Events give students the chance to get outside and enjoy the snow while competing in both vigorous and fun winter sports. The list of events includes broomball, snowshoe, skating, snow volleyball, dogsled, cross-country and downhill skiing.

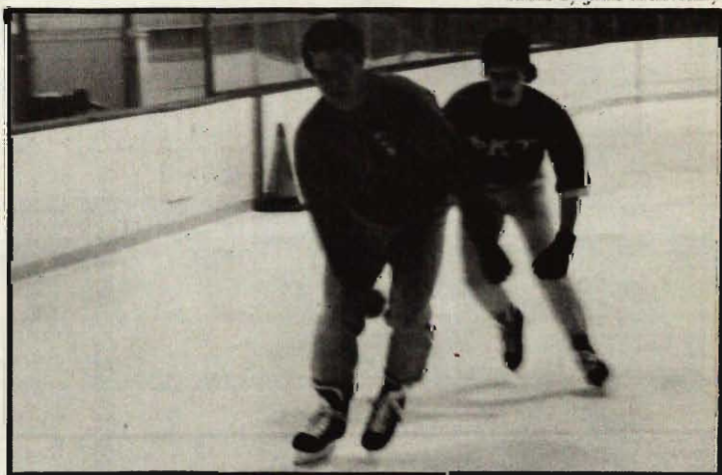
The events began on Saturday, January 28 and will continue through Carnival weekend. At the end, the points each class receives for the events are totalled. Overall Special Event trophies are awarded for the top three places in classes A, B, C, and D.

Photo by Julie McIlvenny



Kristin Grimm makes her way down the tracks.

Photo by Julie McIlvenny



A member of Phi Kappa Tau chases his opponent down the stretch.



Mark Wolf, a member of Snow Chance, blocks the goal.

Skating



Carrie Anderson fast approaches **Sue Wescott** from behind.

Photos by Julie McIlvenny



Brett Finner, Tucker Inn, shows us his skating form.



Brian Hildebrand, Beta Sigma Theta, and **Bruce Mackinnon**, Sigma Pi, edge their way around the curve.

Blades cut the ice as skaters round the course. **Skating** is held at Dee Stadium in Houghton. There are three events to compete in: the 220 yard, the 880 yard, and the four-man relay. Points are awarded to each team based on the fastest times.

Sno Volleyball

Photo by Leroy Steinbacher



Anticipation...



Delt Sigs make an effort to score a point.



Knight House challenges Good Intentions at the net.

The ball is served, and it flies safely over the net. **Sno Volleyball** is played much like regular volleyball except the players must slosh through snow instead of sand or grass. Teams consist of twelve players with six allowed on the court at any one time. The first team to score fifteen points wins the match.

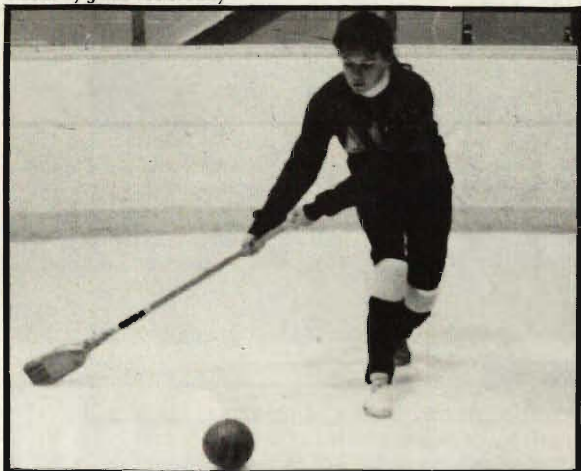
Broomball

Photo by Matt Howard



Whoops! An excited broomball player loses his grip.

Photo by Julie McIlvenny



Brenda Jessica, Delta Phi Epsilon, sets up a shot for the goal.

Photo by Julie McIlvenny

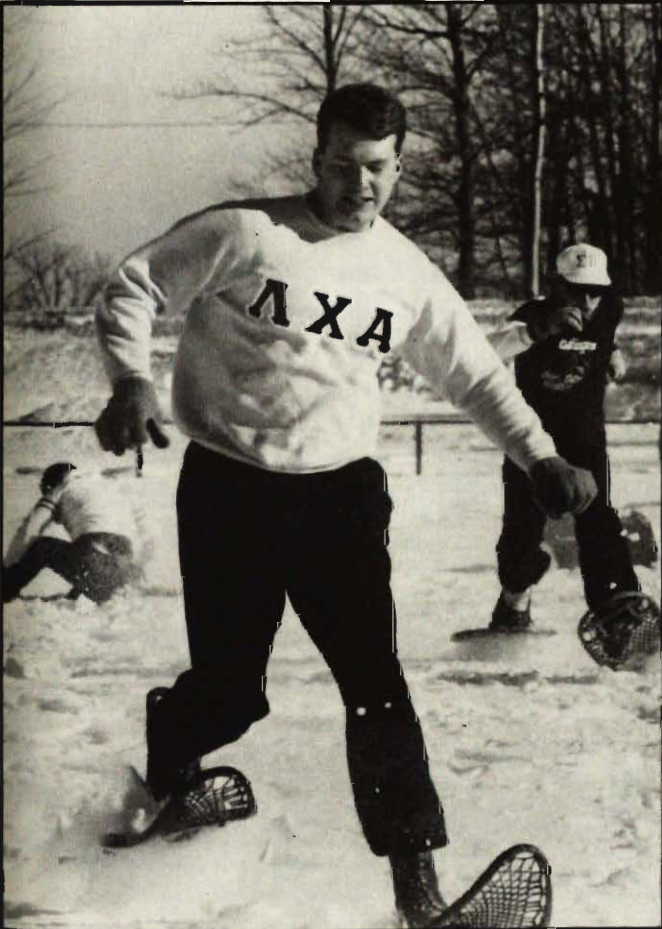


John Yurik, Mu Beta Psi, and **Keith Koehler**, Focuss Inn, battle it out.

The left wing scores a shot and the game is tied 3-3. **Broomball** is played much like hockey except that players use "brooms" for hockey sticks and "rubber balls" for pucks. Another unique part of the game is that players wear shoes instead of skates. The team with the most goals wins the game.

Snowshoe

Photos by Matt Howard



Hans Grohs, member of Lambda Chi Alpha, concentrates hard not to trip over his snowshoes.



Robert Macaulay, member of Sigma Tau Gamma, hands off to a teammate in the sprint relay.



This snowshoe racer runs hard to the finish line in the cross-country relay.

Ready, Set, Go! And the snowshoers are off to a tumbling start. **Snowshoe Competition** is held at the MTU Softball Fields. There are two events: the sprint relay, with each person running forty yards, and the cross-country relay, which is one time around the track. Three-member teams compete against the clock.

Downhill Skiing



A daring skier enjoys "Hot-Dogging" down Mt. Ripley.



This skier shows us how simple it really is...

Photos by Julie McIlvenny



Anticipation for a good run is part of the thrill for many downhill skiers.

The Starter's Gun shoots off and the first racer is through the gate. The **Downhill Ski Race** is held at Mont Ripley, the University's ski hill. In competition, 5-member teams race down a giant slalom course, and the three best times are totalled for the win.

Dogsled

Photos by Brian Horen



Knight House members show that a successful group effort makes the difference to win the race.



It's easy to see where the preferred spot is for this event!



Taking a break and having fun...what Winter Carnival is all about!

“Mush! Mush!” yells the “Musher” on back of the Dogsled as he urges his “Dogs” forward. The **Dogsled Team** consists of six “Dogs” who pull the sled, four riders, and one musher. The course is a grueling .2 miles long. Teams race against the clock, and the winners in each class are determined by time alone.

X-Country Skiing

Photos by Matt Howard



Hope I make it down this hill!



So far so good. Now if I can finish without falling.



Let's see if I can pass him.

Skiers glide down tracks set on a snow forest trail. **Cross-Country Skiing** is held at the MTU Ski Trails where racers follow a two kilometer course. Skiers start two at a time in 30-second intervals and, the combined times of the three team members determine who wins.

1989 Winter Carnival Sponsors

Blue Key National Honor Fraternity wishes to thank the following sponsors

The Gold Club

City of Houghton
Jim's Foodmart 1-Too
Pepsi-Cola of Houghton

D&N Savings Bank
Jim's Septic Tank Service
Superior Natl. Bank & Trust

The Silver Club

Best Western King's Inn
College Motel
Eagles Country Club
Festival Foods
Little Caesars Pizza
Peninsula Copper Industries
U.P. Power Company

City of Hancock
Commercial Systems
Erickson Oil
Houghton Natl Bank
Maki Oil Company
South Range State Bank

The Bronze Club

Best Western Copper Crown
Gateway Motel
Gino's Restaurant
Horner Flooring Company
Leuthold's
Northern Michigan Water Co.
Tercha & Daavettila, Attorneys
U.P. Engineering & Archi, Asso

Copper Range Abstract
Gazette & Lakeside Apartments
Greenlee Printing Company
K-mart
Neale, M.D. Robert
Portage Motel
Trusock, MD Dr. Bruce J.
Usitalo's

Douglass House Saloon
Gilbert, MD Dr. David H.
Hancock Bottling Company
Lake Superior Land Co.
Nominelli, DDS, DR Robert
Sarazin, Dr. William
Turnquist, CPA, George
Vacationland Motel

Product Donation

Copper Wood
Domino's Pizza
Laiti Jewelers
Pizza Hut

Copper Nugget
Flowers by Sleeman
Pelkie Co-op Store
Vollwerth & Company

Dick's Favorite Sports
Kathy's Country Flowers
Peterlin Brothers

General Sponsors

41 Lumber
Dr. Judith Archibald, DDS
Brown Auto Parts
By Nature
C.L.'s Right Image
Carpenter's Closet
Cliff View Inn
The Crystal Room
Dave's Marathon Service
DeForge & Dennis Auto Service
First National Bank
The General Store
Goodwin Motors, Inc.
Hillside Rest. and Bakery
Jim's Pizza
Edward D. Jones & Co.
Kathy's Hair Style Shop
Kilpela Furniture
Kukkonen & Kliber, Attorneys
Lakes Engineering Co.
Lindrus Chevrolet-Olds, Inc.
McGann Building Supply
Mohawk Millwork
Northern Credit Bureau/CCS
Peninsular Gas Company
Portage Lake Animal Hospital
Red Garter Inn
Santori Tire
Shawn's Rest. & Pizzeria
Snow's Body Shop
Superior Crafts
I.E. Swift Company
Twin Lakes Resort
Villa Steakhouse/Cozy Corner
White House Motel

Aire Care
Arens Fuel Company
Bruno's Motors
C.C. Ford Lincoln Mercury
Calumet Drugs
Central Foods
College Avenue Vision Clinic
D & L Janitorial Services
Del's Beauty Salon
The Einerlei Shop
Foxy Lady of Houghton
Gentlemen's Choice
Hairsmiths
Holiday Motel
Joey's Grocery Store
Jukuri and Family Funeral Home
Dr. R. L. Kavorik, DDS
Kindy Optical
Mike Lahti State Farm Ins.
Lakeview Lounge
Los Dos Amigos
Mechlin/Tomasi/Johnson/Vairo
Monticello's Grocery
Northgate Motel & Gift Shop
Phoenix General Store
The Print Shop
Rowe Moving and Storage
Dr. James Sarazin, MD
The Shelden Clipper
Special Occasions
Superior Lube & Equipment
Talk of the Town-Quincy Loafer
Ultramatic Data Processing
Village Market
Wickley Ins. & Real Estate

The Ambassador
B&B Bar
Bryan's Barber Shop
C.C. Professional Center
Calumet Floral & Gifts
Chippewa Motel & Rest.
Coon's Service
Dale's Flower Shop
Dollar Bay Linoleum & Tile
Elias Brothers Big Boy
Gartner's Dept. Store
Gitzen Company
Hancock Hardware
The Hut Inn
Johnson's Clothing Store
Kaleva Inc.
Ken Koski Sign & Elect.
The Kosmetique
Lake Superior Fisheries
Laurium Automotive Center
Manderfield Electric Inc.
The Medicine Shoppe
McGrath Roofing, Inc.
Northwoods Trading Post
Pink Cloud Beauty Salon
Range Finer Foods
Rudy's Bar
Service Shop Dry Cleaners
Siirtola Well Drilling
Surgeon's Dept. Store
Superior State Agency of Hancock
Toni's Country Kitchen
Uphill 41
Vollwerth & Company
Wisti & Jaaskelainen

Arcadian Acres Motel
The Book Concern, Inc.
Busy Hands Shop
C.C. Veterinary Clinic
Calumet Laundromat
City Synder Drug Store
Crampton Surveying
J. W. Dandy Party Store
Don's Heating Service
Family Shoe Store
Ted Gast Insurance
Goodell Oil Company
Helen's Beauty Shop
Dr. D. Jepsen
Johnson's Used Cars
Katalina Motel & Rest.
Keweenaw Gem and Gifts
Kramer's Standard Service
Lakeland Insurance Agency
Dr. John Lawton, DDS
Mars Building Supply
Dr. Gary Moberg, DDS
Northern Auto Service
The Oak Tree
Pooch's Pub
Range Lounge
Rudy's Lumber & Supplies
Shades of the Past
Simons Brothers Inc.
Superior Block
Surplus Outlet, Inc.
Trevarrow & Lantto, Inc.
Upper Peninsula Hearing Aid S.
West End Grocery
WMPL/WZRK Radio Stations

**Have a Safe
and Enjoyable
Winter Carnival
Weekend!**

Hancock Hardware

***Try the Fresh
Citrus Taste***



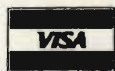
HANCOCK BOTTLING CO.
HANCOCK MICH. 482-3701



College Motel

**Located Adjacent To
Michigan Tech University**

CALL
(906)482-2202



Rooms Overlooking Portage Lake

**1038 College Ave
Houghton, MI
49931**

- 24 Air Conditioned Units
- Color Cable TV
- Direct Dial Telephones

**300 Pearl St.
Houghton**

482-4080

**Open 7 days
a week**

**and
now...**

**food
art**

*The store
with the
red carpet
service.*

**Jim's
Too**

**Area's most
beautiful
and spacious
super
market**

- ✓ **Beer**
- ✓ **Wine**
- ✓ **Liquor**

Graduate Degrees in Mechanical Engineering Engineering Mechanics

MS and PhD Programs in:

**Design/Dynamic Systems
Energy/Thermofluids
Manufacturing/Industrial
Solid Mechanics
Manufacturing Systems
Bioengineering**

CONTACT: Prof. Harold A. Evensen

(906) 487-2182 or 487-2551

**ME-EM Department
Michigan Technological University**



Salutes

**BLUE KEY & MTU
WINTER CARNIVAL '89**

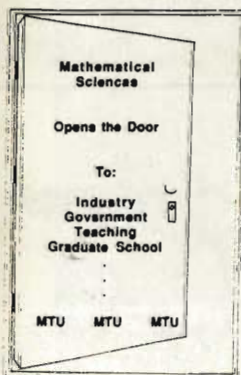
"A Tradition of Excellence"

Serving the Keweenaw
Cable TV • FM Stereo • Satellite Services

1103 Enterprise Dr.

482-2040

BRESNAN
BRINGING ENTERTAINMENT HOME



For a Promising
Career, Consider
The Department of
Mathematical Sciences

- Applied Math
- Pure Math
- Computational Math
- Statistics

**The Department of
Mathematical Sciences***
Says

*"Have a Wonderful
Winter Carnival"*

*Defending Academic Broomball Champions

Sciences & Arts

**Salutes
Excellence in Education
and
A Great Winter Carnival**

Best Wishes For
WINTER CARNIVAL !!!

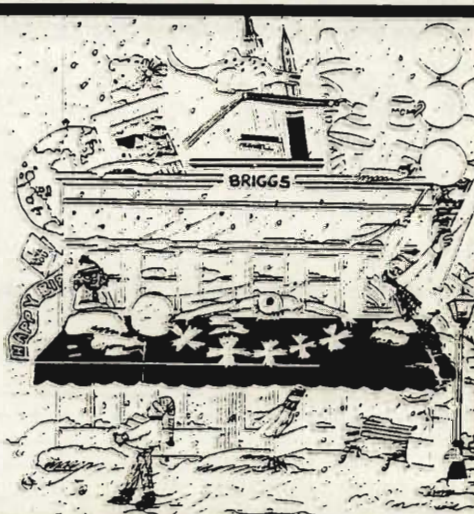
MONT RIPLEY

Have A Great Time!

SKI HILL



CONGRATULATIONS
1989 WINTER CARNIVAL



Commercial Systems

414 Shelden Houghton 482-3990



*Your Complete Menswear Store
Including Tuxedo Rental*

The Country Squire

408 Shelden Avenue, Houghton, Michigan 49931
(906) 482-9938



*"Best Wishes For a Happy
Winter Carnival"*

From

PAT'S IGA of Hancock

PAT'S IGA of Calumet

PAT'S IGA of Crystal Falls

PAT'S JUBILEE of L'Anse

and

FESTIVAL FOODS of Houghton

LINDRUS



Chevrolet-Olds, Inc.

110 E. Quincy Street
Hancock, Michigan 49930
(906) 482-5650

Your Full Service Auto Center

**Chevrolet, Oldsmobile, Chevrolet Trucks,
Good Used Cars**

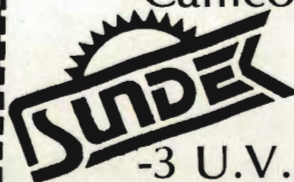
**Best Wishes
From
of Houghton and
L'Anse**



-10,000 Movies in Stock

-VCR Rentals/Sales

-Camcorder Packages



-3 U.V.A Tanning Beds

Copper Country Mall

482-6939

Monday- Saturday 10am to 11pm

Sunday 12pm to 11pm

L'Anse

524-6848

Monday-Sunday 12pm to 10pm

**We Salute
The Players And Producers...**

**May All Your Dreams
Make The
American Scene**

**Best
Wishes
From**



1 South · Houghton · (906) 482-5351

Michigan Technological University
Committee for Campus Enrichment presents...

North to the Pole: The Power of Purpose

A slide presentation by



Paul Schuke

Journey to the top of the world with
co-leader of the historic Steger/Schuke
expedition as he relates the epic trek that
reached the north pole by dogsled.

Monday, February 6

8:00 p.m.

Fisher Hall

Admission Free

Open to Public

This event is made possible by funding from the CCE and The Michigan Tech Fund.

The Faculty and staff of the

Physics Department

where cryogenics comes naturally...



WISH YOU A FUN-FILLED
WINTER CARNIVAL

Our Degree Programs Include...

- B.S. in Physics
- B.S. in Applied Physics
- M.S. in Physics
- PhD in Applied Physics
- PhD in Metallurgy



For More Information call
(906) 487-2086

SWIFT HARDWARE

featuring
the **SWIFT 1-HOUR** photo lab

One-Hour, Four-Hour, and Next-day
Photo Finishing Done on Site
We Also Do Disc

NEW on Site slide processing,
B&W and Push-Pull Services

SWIFT HARDWARE

in **Downtown Houghton**

9-5 Mon- Sat. 9-8 Fri. Closed Sunday

Easy access under the deck by car, boat, or snowmobile!
Fair prices and all your photo questions answered.

**314 Shelden Ave.
Houghton, MI
482-0530**

School of Technology...

*Specializing in Application
oriented programs of study.*

Two year Associate Degree Programs in:
Civil Engineering Technology
Electrical Engineering Technology
Electromechanical Engineering Technology
Mechanical Design Engineering Technology
Forest Technology
Four year Bachelor of Science Degree in:
Surveying

All programs are accredited by their respective
accrediting agency of The Accreditation Board
for Engineering and Technology, Inc. or
recognized by the Society of American Foresters.

**Best Wishes for Another Successful
Winter Carnival!**

Management Programs for Engineers

M.S. in Operations Management
M.S. in Mineral Economics
B.S. in Engineering Administration
Thematic Clusters

Contact: Dr. Paul A. Nelson
School of Business and
Engineering and Administration
Michigan Technological University
(906) 487-2809 or 487-2669

Attend: Information Meeting
February 14, 1989
103 EERC, 7:15 p.m.



the douglass house

*Saloon &
Restaurant*

*Monday - Saturday 7:00 a.m. - 9:00 p.m.
& Sunday 8:00 a.m. - 9:00 p.m.*

517 Shelden Avenue,
Houghton, Michigan 49931
(906) 482-2003

*Listed in Michigan and National
Historic Registrar of Historical Places*



INTRODUCING DAILY SPECIALS FROM DOMINO'S PIZZA

THINK THICK ON THURSDAY

Two 10" pizzas are 2.00 off the regular price. Two 10" chesse pizzas for **\$5.00**. Additional toppings \$1.00.

No Coupon necessary.
Offer Good 4pm - 1 am Sundays

FABULOUS FRIDAY, SATURDAY & SUNDAY

Two 14" pizzas. One with ExtraganZZa, Deluxe or Vegi. The other with two toppings of your choice, and a six-pack of Coke for **\$15.00**.

SUNDAY DOUBLE FEATURE

Two 10" pizzas with pepperoni, double cheese and extra thick crust for **\$7.50**. Additional toppings for \$1.00

No coupon necessary.
Offer Good 4 pm - 1 am Thursdays

Call Us: 482-0972

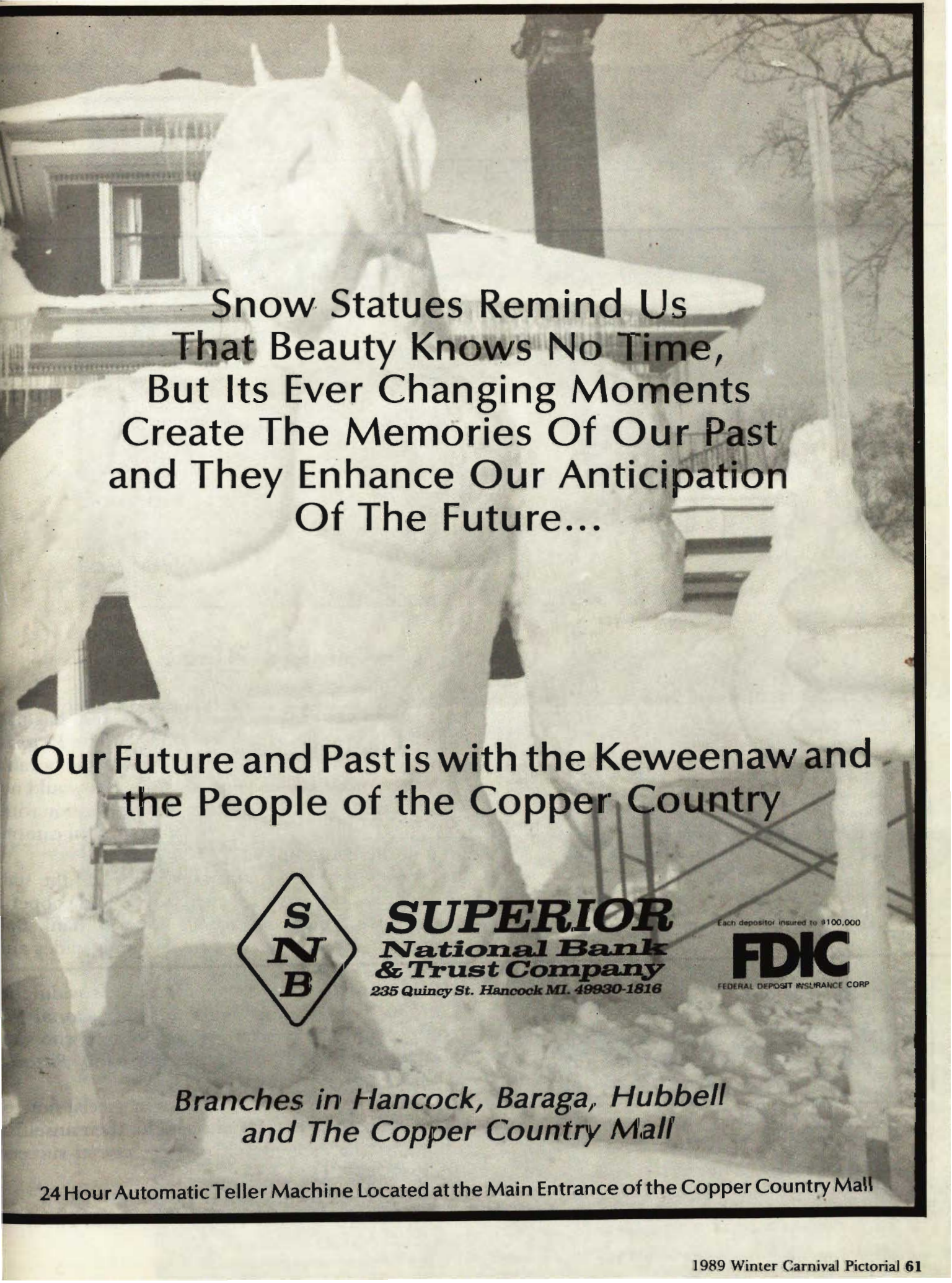
804 W. Sharon Ave.
Houghton

Hours:

4pm-1am Sun.-Thurs.
4pm-2am Fri & Sat

Limited Delivery Area

Our drivers carry less than \$20.00



Snow Statues Remind Us
That Beauty Knows No Time,
But Its Ever Changing Moments
Create The Memories Of Our Past
and They Enhance Our Anticipation
Of The Future...

Our Future and Past is with the Keweenaw and
the People of the Copper Country



SUPERIOR
National Bank
& Trust Company
235 Quincy St. Hancock MI. 49930-1816

Each depositor insured to \$100,000

FDIC
FEDERAL DEPOSIT INSURANCE CORP

*Branches in Hancock, Baraga, Hubbell
and The Copper Country Mall*

24 Hour Automatic Teller Machine Located at the Main Entrance of the Copper Country Mall



Pictorial Staff



The Pictorial staff has fun in the snow.

Thanks!!

Another Carnival has past and again it has been a great success! The *Pictorial* has also succeeded again in providing memorable coverage of Carnival events. However, it would not have been possible to produce this publication without the the help of many special people on campus and in the community.

We would like to thank **Jack, Bob,** and the staff at the Book Concern for their advice and cooperation in printing the *Pictorial*. We also thank **Bob Slater** and **Photo Services** for donating slides and photos.

Blue Key deserves recognition for providing us with much of the information for the *Pictorial*. We also applaud the **community businesses** who supported us through advertisements and *Pictorial* sales.

And last but certainly not least, a special note of thanks goes to our **staff members** for their unselfish efforts which helped make the *Pictorial* succeed another year.

Thank you all!!
Paulette and Paula

STAFF

| | |
|------------------------|---------------------------------|
| Co-Editors | Paulette Nickel Paula Walter |
| Business Manager | Susan Uhrie |
| Co-Photo Editors | Brian Horen Julie McIlvenny |
| Ad Production | Gretchen Martz |
| Ad Sales | Susan Uhrie Gretchen Martz |

Dreamy Scenes

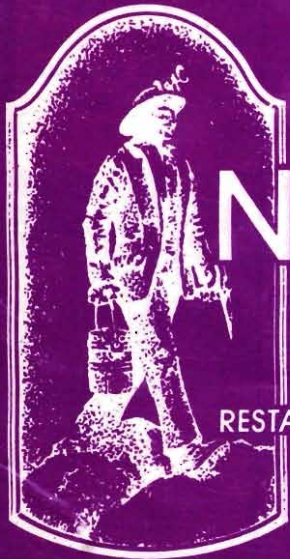


Photo by Photo Services

Under this village
lost in the snow
I still hear the stream

--Shiki

RAMADA® INN



the Northern Lights

RESTAURANT AND LOUNGE

- 77 Rooms
- Rooftop Restaurant
- Cocktail Lounge
- Pool, Whirlpool, Sauna
- Banquet Facilities

**The Keweenaw's only
full service hotel
striving to bring the old
ideas of good food and
superior service to the
Copper Country.**

**"Welcome and Enjoy
Winter Carnival"**

franklin square

RAMADA INN • 820 Shelden Ave., on Franklin Square, Houghton, Michigan 49931 • (906) 487-1700

A Member of TheVenturesGroup ♥

96-195R