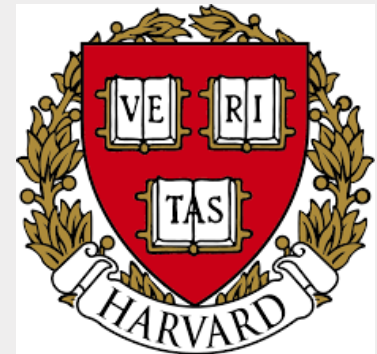




Paul Sanders

Associate Professor; sanders@mtu.edu
Materials Science and Engineering



Background

BS MY Tech, PhD MSE Northwestern

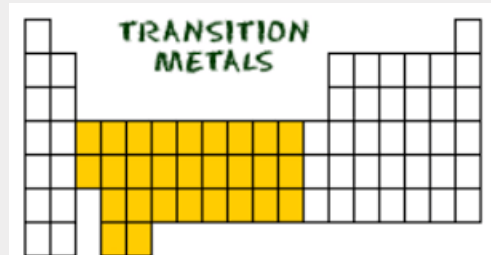
Harvard post doc, 10 yrs @ Ford Research+Jaguar Land Rover

Six Sigma Black Belt, Deakin University sabbatical

Areas of research/expertise

Alloy and Process Design

- ✓ Al, Fe, Ni, Cu,...
- ✓ Pilot scale production @ Tech
- ✓ Strength, conductivity, corrosion,...



Computational Tools

- ✓ Thermodynamics & kinetics w/Thermo-Calc
- ✓ Six Sigma + Bayesian optimization



DEAKIN
UNIVERSITY AUSTRALIA

METAL DESIGN

PAUL SANDERS: MSE

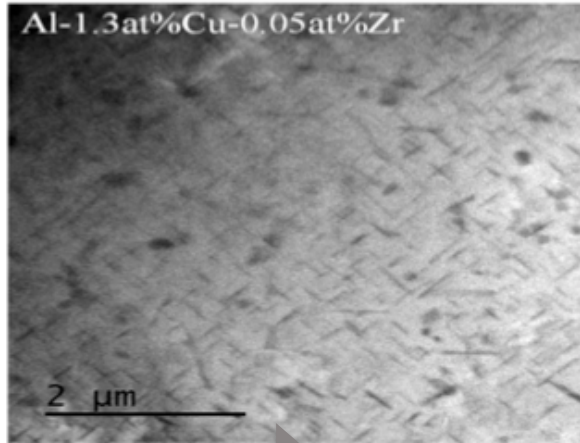
MICHIGAN TECH
RESEARCH FORUM
TECHTALKS

13 26.982

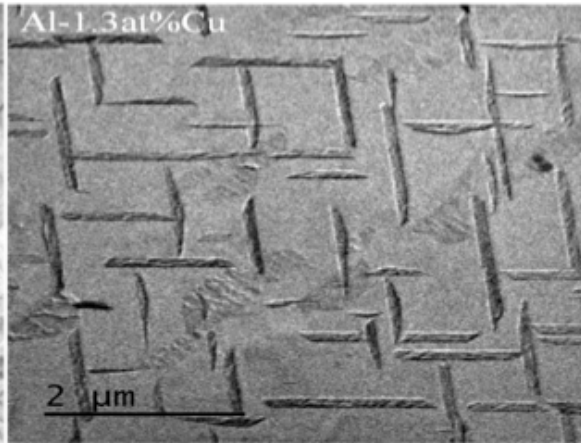
Al

ALUMINIUM

Al-1.3at%Cu-0.05at%Zr



Al-1.3at%Cu



26 55.845

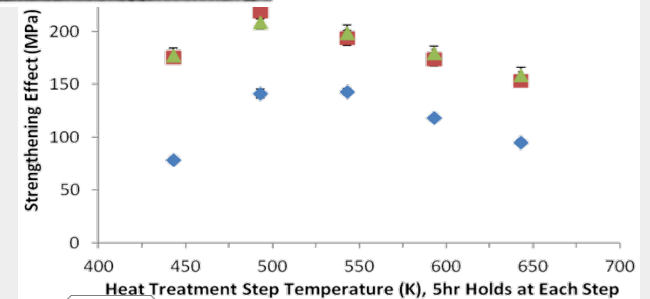
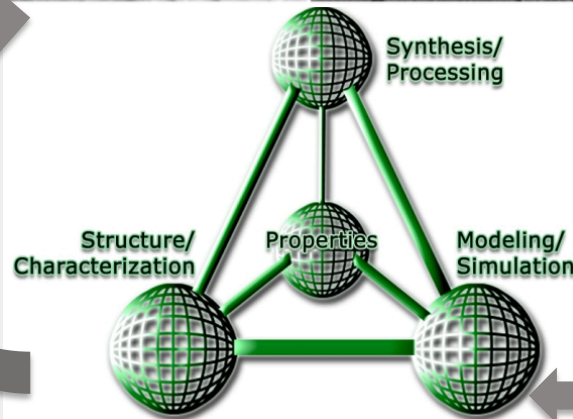
Fe

IRON

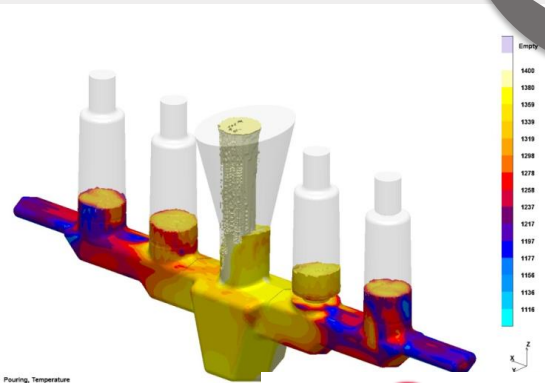
28 58.693

Ni

NICKEL



Thermo-Calc Software



MAGMA

