

# Michigan Tech Lode PICTORIAL

FEBRUARY 1971 EIGHTH ANNUAL

LIBRARY  
MICHIGAN TECHNOLOGICAL UNIVERSITY  
HOUGHTON, MICHIGAN



## THE AGE OF SHIV-V-ALRY





S. PRICE

**APPLE TREE**



# WINNERS RECORD

## EVENTS

SNOW STATUES

STAGE REVUE

BEARD CONTEST

SKATING

SNOWSHOEING

DOGSLED RACE

BROOMBALL

Totals

Place

### Class A

Alpha Kappa Psi

Beta Sigma Psi

Delta Sigma Phi

Kappa Delta Psi

Phi Kappa Tau

Phi Kappa Theta

Sigma Phi Epsilon

Sigma Rho

Tau Kappa Epsilon

Theta Tau

### Class B

Air Force ROTC

Army ROTC

A.S.C.E.

Coed Hall

DHH

Forestry Club

House of Lords Good Intentions - Kybo

KLF - ZHO - OCH

Stagger Inn Tombstone Territory

St. Albert the Great

Vets

### Class C

Alka Hall

Eden - Knight House

Freezer Inn

Phrozen Phifth

Gazer House

La Maison de Gaite

Phi Lambda Beta

Theta Chi Epsilon

ORGANIZATIONS

# THE AGE OF SHIV-V-ALRY

## EDITORIAL

by Richard Williams

Every year on the Michigan Tech campus, as the long days of winter begin to play on the minds of the students, attention focuses on the first week of February. This particular date has long been an inspiration to all, as it marks our traditional Winter Carnival activities. Over the years, one can see the development of Carnival evolve from its early beginning in 1922, to the splendor as we know it today. So much time and effort has gone into this year's planning from the various organizations involved, that it would be difficult for the average person to fathom what goes on behind-the-scenes.

The guiding hand behind Winter Carnival comes from Blue Key, who masterminds the whole schedule of activities. They began their planning last fall; we have witnessed the fruit of their labor in these past few days. But the credit for the success of our Carnival cannot be given to any one particular group. The many hours of hard work and sacrifices endured by all the organizations involved, band together to present to the public the type of superb quality they have come to expect. The various groups on campus provided the sculptured snow masterpieces that have not been equaled in size or quality by any other school in the nation. When attention is drawn to Tech's Carnival, it is these statues that receive the acclaim they so richly deserve.

This year, even the gusty winds and driving snow of old man winter played an integral part in the theme: THE AGE OF SHIV-V-ALRY. As the chilling pun of the title might suggest, there wasn't much respite from the severe weather we endured to depict the days of "knighthood in bloom". For those of you who toiled on the statues in sub-zero conditions, this was what made our Carnival the success it was. Now the inconveniences, disappointments, and aggravations are things of the past, as we can look back with pride at our accomplishments. All that remains now is the feeling of tremendous satisfaction.

To the visitors who came to our campus to partake in the festivities with us, we hope they will take home fond memories of their stay. And to those whose inexhaustible energy brought us this successful Winter Carnival, we say Thanks.

## COVER CREDITS

The chilling Copper Harbor scene on the front cover is from the library of Mrs. Robert Belanger.

The blooming pussy willow on the back cover reminds us that spring is not far away. It is from Jim Loeppert's collection.

## Michigan Tech Lode PICTORIAL STAFF

### PHOTOGRAPHERS

Marc Robling ..... Sophomore Mechanical Engineering  
John R. Baker ..... Senior Mechanical Engineering  
Kim Plank ..... Senior Mechanical Engineering  
Bill Owens ..... Freshman Geo-Physics  
Greg Filter ..... Freshman Electrical Engineering

### PHOTO EDITOR

Jim Blevins ..... Junior Mechanical Engineering

### GRAPHIC ARTISTS

Al Zimmerman ..... Junior Civil Engineering  
Debi Michael ..... Post Graduate Liberal Arts  
Karla Strobel ..... Freshman Biological Sciences

### PRODUCTION

Dave Davis ..... Post Graduate Electrical Engineering  
Don Reihart ..... Freshman Forestry Technology  
Pete Hennig ..... Freshman Electrical Engineering  
Doug Pretzer ..... Freshman Civil Engineering

### MANAGING EDITOR

Jim Loeppert ..... Senior Civil Engineering

### WRITERS

Debi Michael ..... Post Graduate Liberal Arts  
Dave Crompton ..... Junior Business Administration

### BUSINESS MANAGER

John Waldron ..... Junior Forestry

### EDITOR-IN-CHIEF

Richard Williams ..... Junior Business Administration

Second class mailing from Hancock, Michigan 49930.

© Copyright, Michigan Tech Lode, 1971. All rights reserved.





Crack, Snapple, Plop -Delta Sigma Phi 1st -1970

We extend our congratulations  
to Blue Key  
for another fine  
**WINTER CARNIVAL**

## F.D.I.C.

Downtown Office  
600 Shelden Ave.  
Phone: 482-5500



University Branch

University Office  
1303 College Ave.  
Phone: 482-7100



## Special Student Checking Accounts

SERVING THE COPPER COUNTRY SINCE 1865



**HOUGHTON NATIONAL  
BANK**

Da Gall of Dat Guy -Theta Tau 1st -1969





In order to stage an event the size and magnitude of Michigan Tech's Winter Carnival requires determination, dedication and leadership. This tremendous undertaking has come under the guidance of our local chapter of Blue Key National Honor Fraternity. Since 1934, these active men have assumed the planning and management necessary to provide continuing success each year in the festivities.

Winter Carnival has always been the prime event of the year and the pride of all who participate in it. With this in mind, Blue Key is continuously striving to improve and expand on previous events. Early in fall term, committee assignments are made. Each of the twelve committees, ranging in size from one to seven persons, handles a certain aspect of Carnival. As February approaches, the final stages of planning and coordinating with the various campus organizations reaches a high point. Finally, when Winter Carnival begins, Blue Key is on hand to guide and direct the activities.



Blue Key officers seated from left to right are: Jim Albitz, Jim Arnold, Henry Dietzel and Steve Sageman.

**Blue Key**

**Sponsors**



**Winter**

**Carnival**

**Here Come**

**Da Judges**

Visiting the Michigan Tech campus to act as judges for Winter Carnival Snow Statue competition are two executives from leading industrial corporations.

Mr. William F. Clarke comes to Michigan Tech as a representative of Cleveland Cliffs Iron Company where he is Training Supervisor. He and his wife Evelyn reside in Ishpeming.

Mr. Harry J. Harp is the Assistant Manager of Recruitment for Union Carbide Corporation. Mr. Harp and his wife Mary Ann are traveling from New York City to be here for Winter Carnival.

Michigan Tech bids welcome to the Clarkes and the Harps.

Dig Over Book LD 3347 L63-1971-03-01



Each year during Winter Carnival, Blue Key sends 500 snowballs to Southwest Texas State University. Packing snowballs (from left to right) are: Jim Arnold—President, Dean Meese—Advisor, and Bill Wassberg—National Publicity Chairman.



For EVERYDAY

PARTIES

SPECIAL OCCASIONS

SHOP

**JIM'S FOODMART**

HOUGHTON

SPECIALIZING IN

FINE FOODS AND BEVERAGES

Where the  
Action is



Copper Country

Finest Pizza

**The Library**

Downtown Houghton

MISS THE CAMPUS ?

Subscribe to the

*Answers  
In Detail*

**Michigan Tech Lode**

HOUGHTON, MICHIGAN 49931

**sammy  
sez**

MAILED DIRECTLY TO YOUR HOME

\$2.00 for remaining 70-71 school year

\$4.00 for 71-72 school year

\$6.00 for 1 1/2 year subscription

Send address and check

Subscription Editor

Suite 122 Memorial Union

Houghton, Michigan 49931



May Your 1971 Carnival  
Be Another Huge Success

**THE MERCHANTS & MINERS BANK**

For the Best in Banking





# Snowshoeing



# Broomball





FIRST PLACE CLASS A

DELTA  
SIGMA  
PHI



BUZZ OFF SNIDLEY!





**SECOND PLACE**

**CLASS A**

**TAU KAPPA  
EPSILON**

**YOU'VE COME A LONG WAY BABY**



**THIRD PLACE**

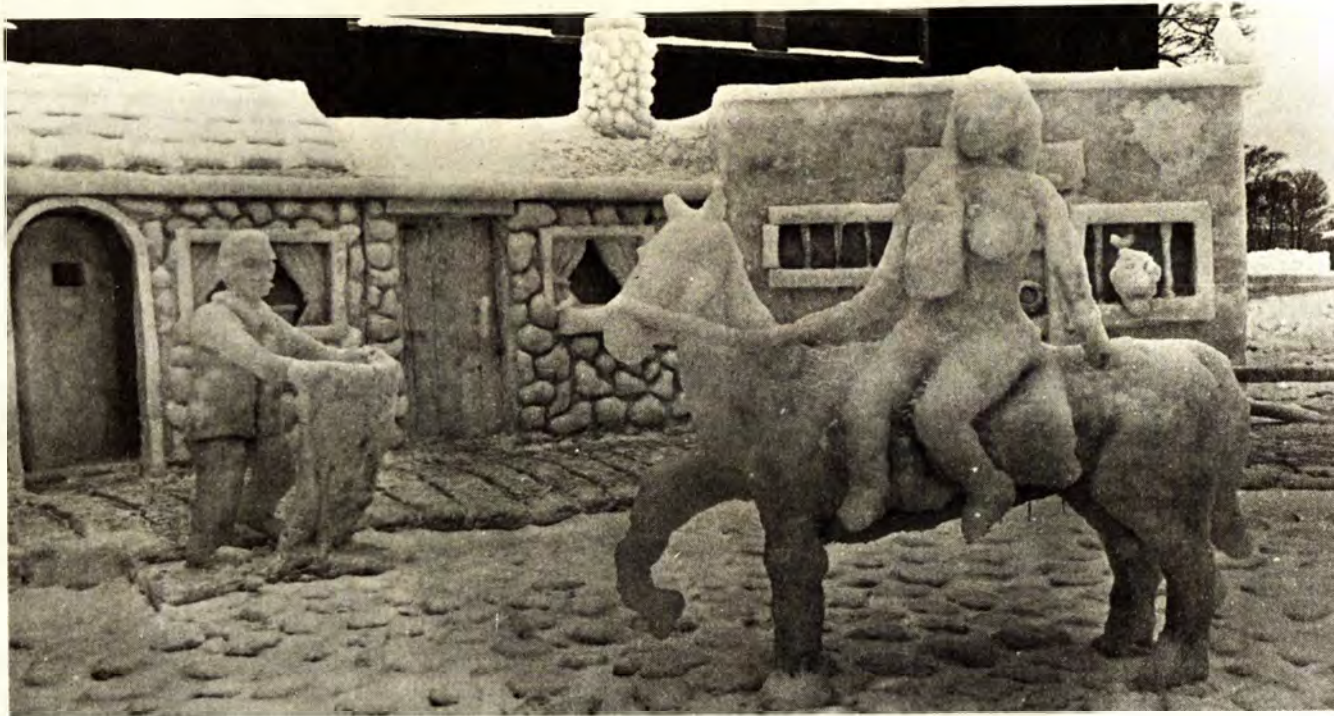
**CLASS A**

**SIGMA PHI  
EPSILON**

**THE DARK AGES OF WOMEN'S LIB**







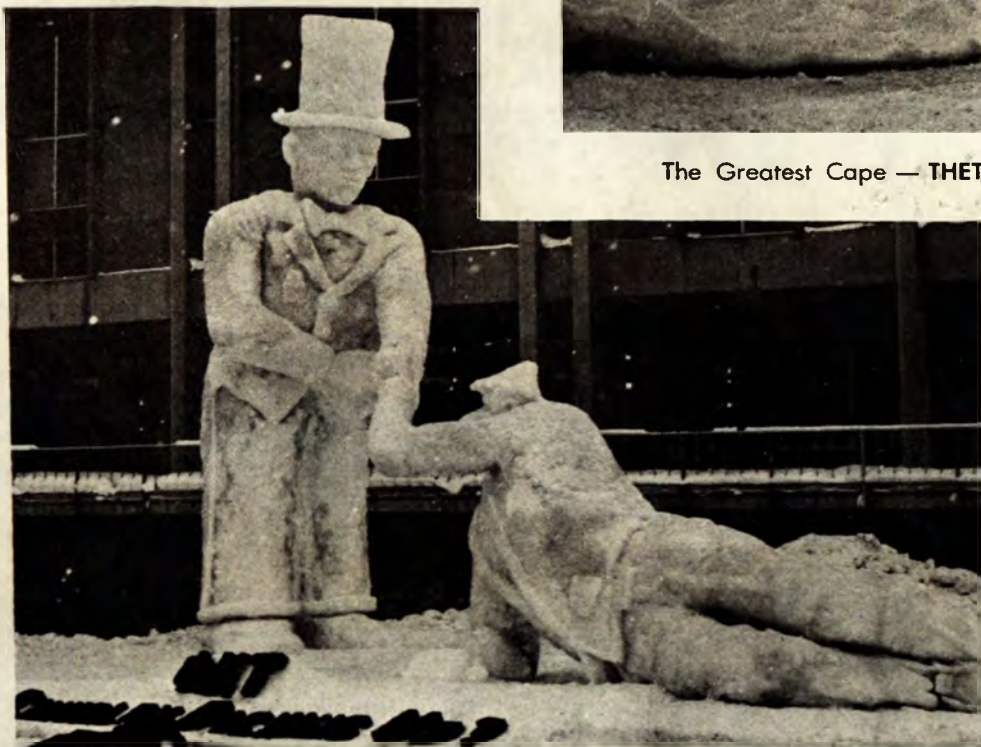
Chilvary for your Shiver Lady Godiva — SIGMA RHO



One Enchanted Knight — PHI LAMBDA BETA



The Greatest Cape — THETA TAU



Is chivalry picking up? — PHI KAPPA TAU



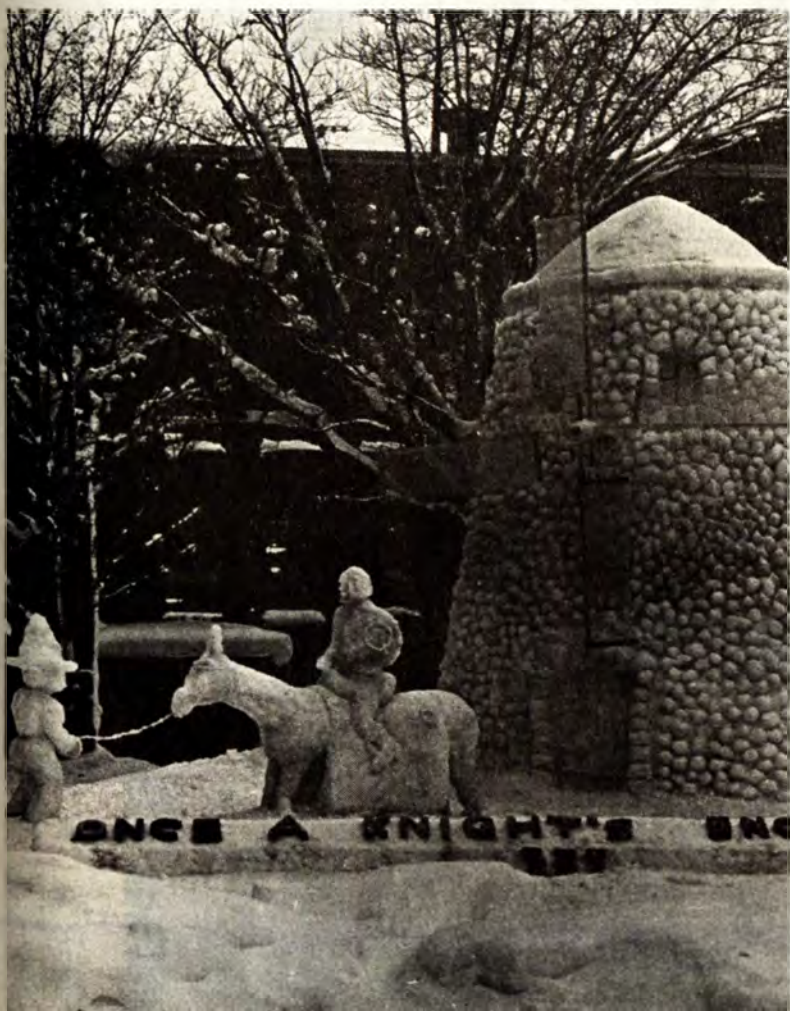


Giving the Lady your seat —

HOUSE OF LORDS—GOOD INTENTIONS—KYBO



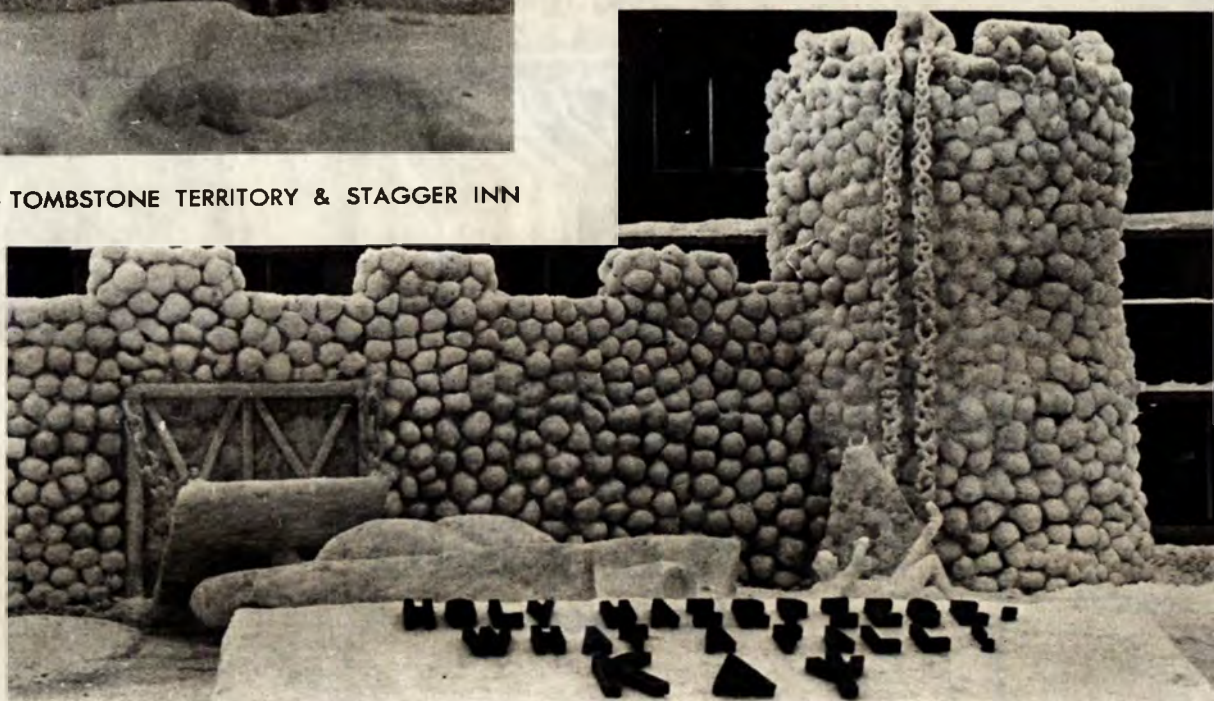
Caution smoking may be . . . — AFROTC



Once a Knight's enough — TOMBSTONE TERRITORY & STAGGER INN



Sampson U Hippie — TRI-CAMPUS BIG BROTHER BIG SISTER



Holy Hairpiece what a fall — KAPPA DELTA PSI



Best Wishes for an  
Enjoyable Carnival



## Bosch Brewing Company

Brewers of Bosch Premium, Gilt Edge and  
Light Sauna Beers

Distributors of Michigan Cask Wines



## JERRY DEMOTTS

*Graduate Photographer*  
New York Institute

**Studios in Michigan**

614 Shelden Ave., Houghton Mich.  
482-1901

229 Genesee Ave., Iron River, Mich.  
CO 5-4516



What kind of man shops at Stern & Field?

## Stern & Field

Hancock





Ski Instuctor Pete Berry demonstrates a tip roll.

Photo by Owens

**Black Magic Stoker Coal**

and

**Radiant Heating Oil**



**Hamar Quant Company**

Houghton Laurium



# *Gino's*

## RESTAURANT



Best Wishes for a  
Very  
Wonderful Winter Carnival

Say it with flowers

say it with ours



A complete floral service  
for all occassions

**Nissila Flower Shop**

320 Quincy St., Hancock

482-2060

Member - Teleflora Delivery Service  
and Flora Fax



# BEARDS



**...AND NOW  
FROM TEXAS...**





# Your Neighbors Are The Best Cable TV Salesmen We Have

Visit a neighbor with Cable TV. If you're not sold when you arrive, you will be when you leave.

People who have Cable TV love it. And they don't mind saying so.

Sometimes our customers use a thousand words to tell you how great Cable TV is.

But one picture would do the job.

**WGN TELEVENTS, INC.**  
610 SHELLEN, HOUGHTON, MICHIGAN

Cable TV serving Houghton, Hancock, Ripley, Dollar Bay,

Chassell, Hurontown and South Range



## The DOWNTOWNER MOTEL

Overlooking Portage Lake and the Lift Bridge!

Electric Heat - Room Phones - Color TV - Sauna

110 Shelden Ave., Houghton

Fred and Mary Lou Mattila, Props.

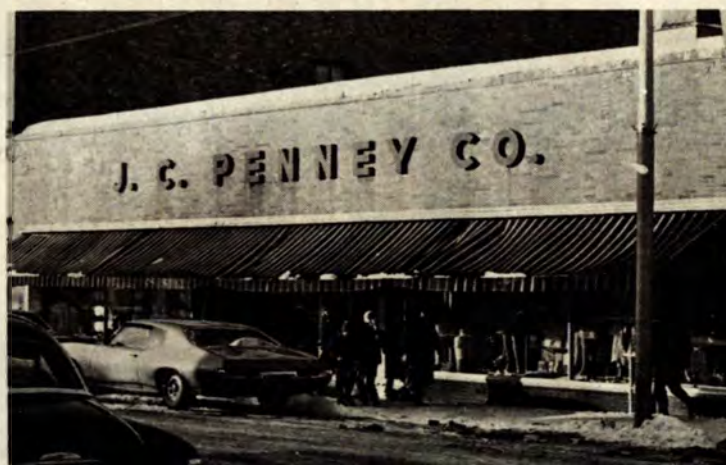
## CHOCOLATE HOUSE *Candy*

Milk and dark chocolate, nuts, creams, fruits, caramels and all the other old-fashioned goodies that add a little something extra to make the Carnival season a time of pleasant joy.

## ROY'S PHARMACY

HOUGHTON

*James E. Monette, R.Ph.*



**Penneys**  
ALWAYS FIRST QUALITY

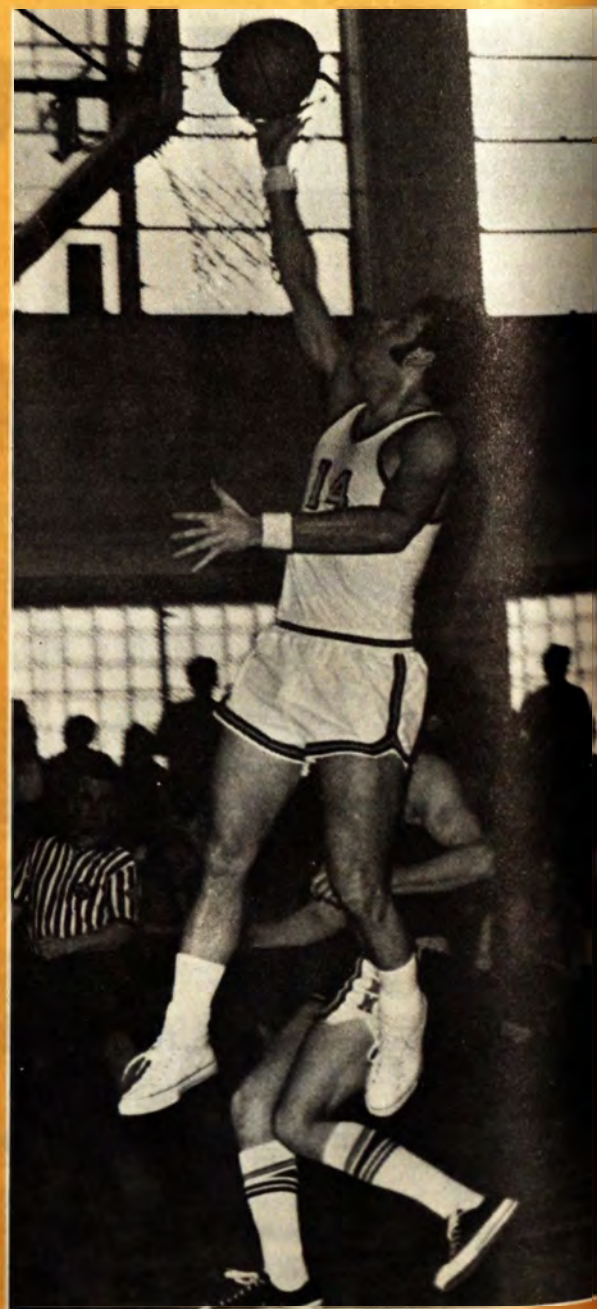




## SNO-GOD STRIKES AGAIN...

Ten inches of snow and high winds forced  
the cancellation of the Roland Kirk -  
New York Rock Ensemble, Winter  
Carnival Concert.

## BASKETBALL







## SWIMMING



An exciting swimming meet and a basketball victory perked the Techmen's spirits despite the inclement weather.





Shop

**Montgomery Ward**

For all your

Home Improvement Needs

*you'll like*

**WARDS**

**COPPER  
CROWN**



**34 Total Electric**

**Units**

**Indool Pool**

**Sauna**

U.S. 41

Midtown - Hancock

## Yalmer Mattila Contracting, Inc.

**General Contractors**

Tel. 482-5450

55 N. Huron St., Houghton, Mi

Specializing in

Ready Mix Concrete

Commercial, Industrial, and Private Construction

Including

**Huron Blacktop Corp.**

55 North Huron Street

Houghton, Michigan

Quality Blacktop For

Private Roads, Drives, Parking Area

and Municipal Work

**Milwaukee's first beer won  
its second name in 1893.**

(and we've been  
**Pabst Blue Ribbon**  
ever since)

Pabst was awarded the blue ribbon as the nation's best in 1893. It is one of a family of quality products produced with pride for over a century by the Pabst Brewing Company. It's brewed by people who still care.



**First of the Great Milwaukee Brewers • Established 1844**

Pabst Brewing Company, Milwaukee, Peoria Heights, Newark, Los Angeles



# Because we listen better, we give you what you want.

We listened when America wanted good, inexpensive transportation, so we built the first mass-produced car — the Model T. Then the first pickup truck. The first station wagon. Then whole new kinds of cars. Like Thunderbird. Mustang. Maverick. Continental Mark III.

We listened when you let us know you wanted an American car that was as small as the imports. And came up with another first. Pinto.

We listen to you about other things, too. Like safety. And air pollution. We installed safety belts in our cars way back in 1956. And now, 80% of the hydrocarbons and 70% of the carbon monoxide emissions have been eliminated from 1971 Ford Motor Company cars.

You see, at Ford Motor Company, we give you what you want. We give you what you want because we listen better.

That's the kind of company we are.

That's the kind of company we've always been.



**...has a better idea  
(we listen better)**



# 1st Class A



Mac Meese

# DELTA SIGMA PHI





# 1st Class B



Snow—A Copper Country Tribal Love Rock  
Musical Hair—Re-styled

## MTU VETS CLUB

# 1st Class C

## THETA CHI EPSILON



We've Come A Wrong Way—Baby



# QUEEN CANDIDATES



*Marcia Albrecht*

SIGMA RHO



*Mary Johnson*

DELTA SIGMA PHI



*Danni Croon*

TAU KAPPA EPSILON

*Patti Helms*

KAPPA DELTA PSI







*Thylla Ann Lyke*

PHI KAPPA THETA



*Karla Stibel*

BETA SIGMA PSI



*Kristine Johnson*

PHI KAPPA TAU



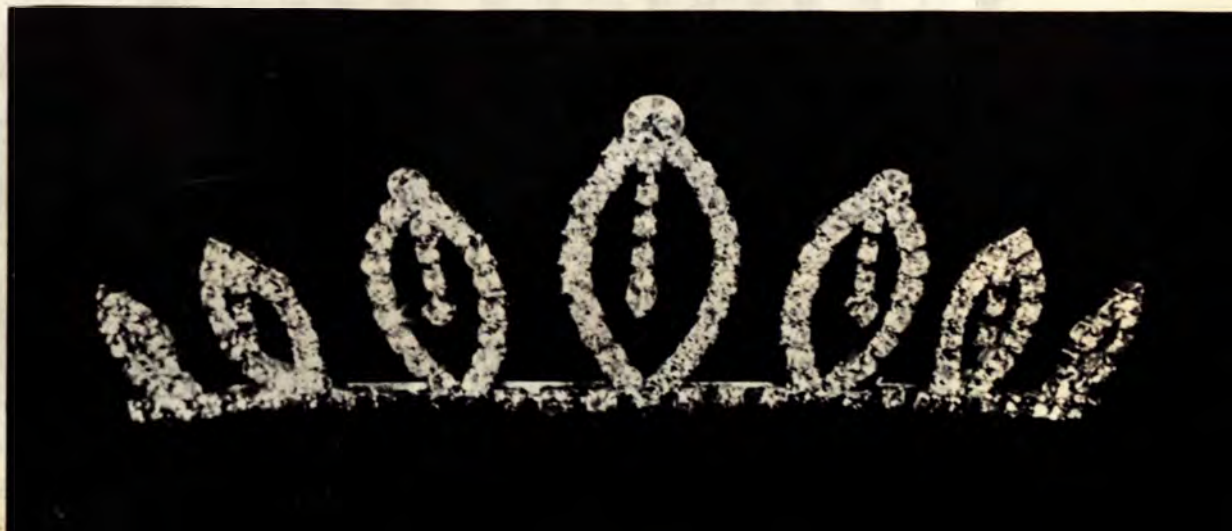
*Judith Kemp*

SIGMA PHI EPSILON

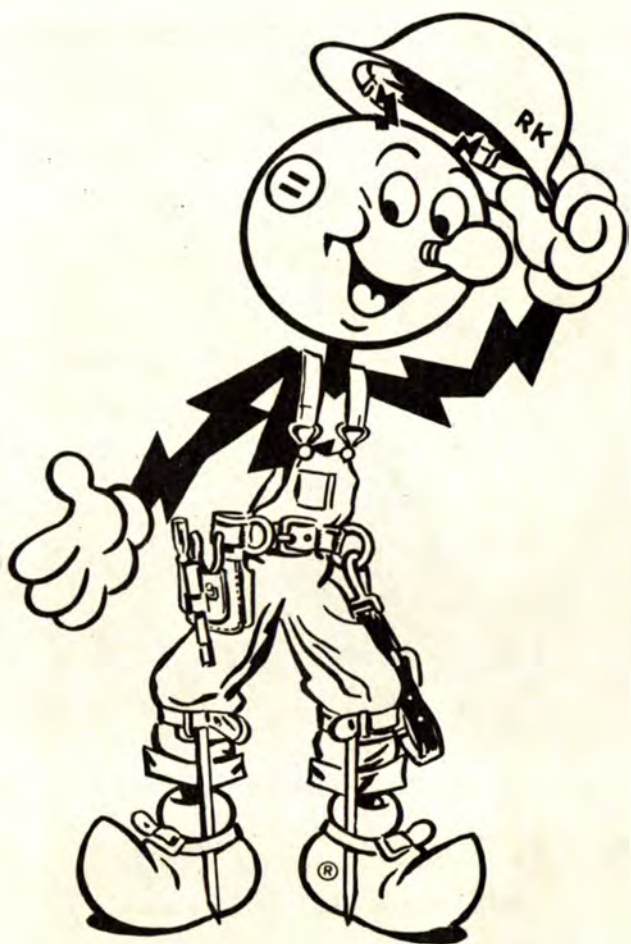


*Pamela Luttrell*

ALPHA KAPPA PSI







**CONGRATULATIONS**  
*—and a tip of the hat to*  
**MICHIGAN TECH**  
*and the 1971*  
**WINTER CARNIVAL**  
*—and best wishes to*  
**THE QUEEN**  
**AND HER COURT**

**FROM REDDY KILOWATT**  
**AND ALL YOUR FRIENDS AT THE**

**UPPER PENINSULA**  
**POWER COMPANY**



# WINTER CARNIVAL QUEEN DANNI CROOM



Danni's reign begins.

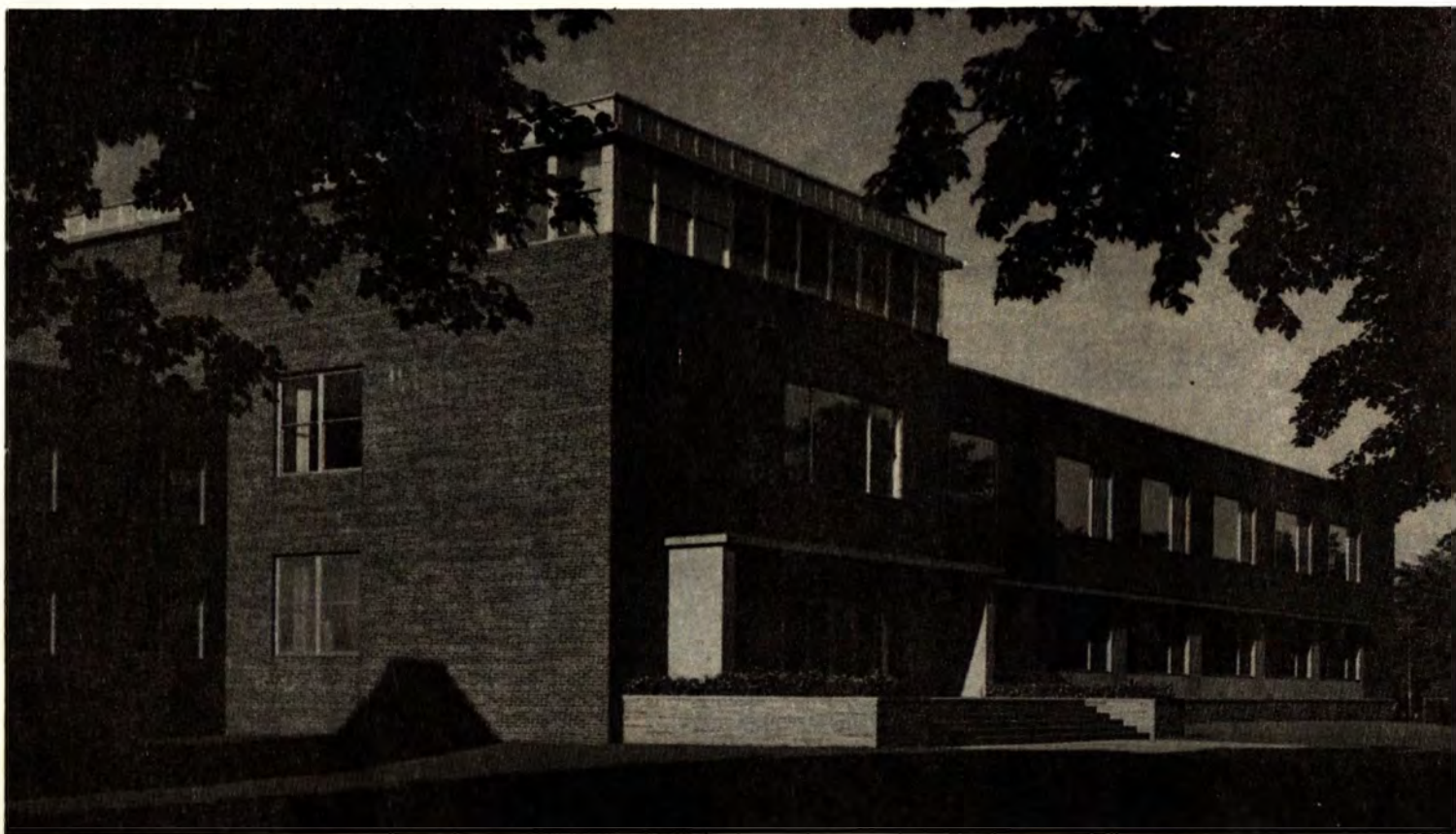


Queen Danni Croom



1971 Winter Carnival Queen and Court





Congratulations to the Queen Candidates  
from the Memorial Union and  
The E. R. Lauren University Bookstore









## THE SNOW-STORM

Announced by all the trumpets of the sky,  
Arrives the snow, and, driving o'er the fields,  
Seems nowhere to alight: the whited air  
Hides hills and woods, the river, and the  
    heaven,  
And veils the farm-house at the garden's end.  
The sled and traveler stopped, the courier's  
    feet  
Delayed, all friends shut out, the housemates  
    sit  
Around the radiant fireplace, enclosed  
In a tumultuous privacy of storm.

S. PRICE

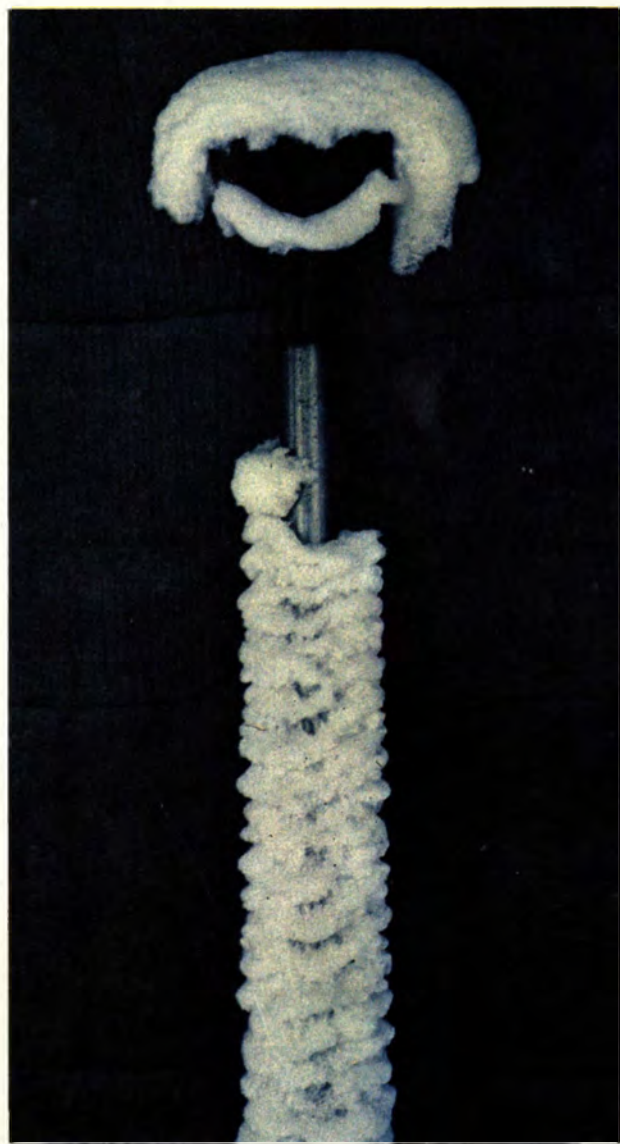


Come see the north wind's masonry.  
Out of an unseen quarry evermore  
Furnished with tile, the fierce artificer  
Curves his white bastions with projected roof  
Round every windward stake, or tree, or door.  
Speeding, the myriad-handed, his wild work  
So fanciful, so savage, nought cares he  
For number or proportion. Mockingly,  
On coop or kennel he hangs Parian wreaths;  
A swan-like form invests the hidden thorn;





J. LOEPPERT



S. PRICE

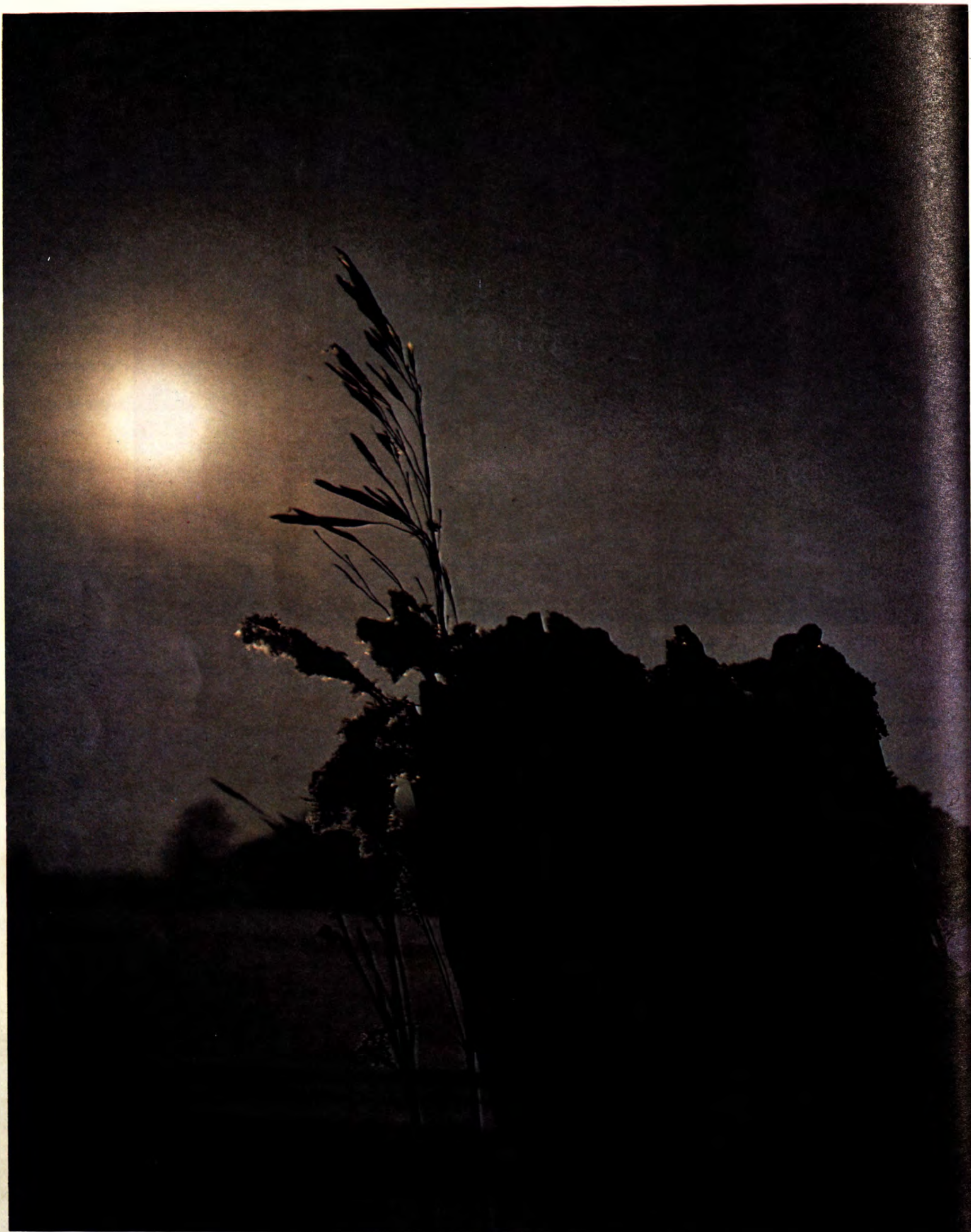
Fills up the farmer's lane from wall to wall,  
 Maugre the farmer's sighs; and at the gate  
 A tapering turret overtops the work.  
 And when his hours are numbered, and the  
     world  
 Is all his own, retiring, as he were not,  
 Leaves, when the sun appears, astonished Art  
 To mimic in slow structures, stone by stone,  
 Built in an age, the mad wind's night-work,  
 The frolic architecture of the snow.

*Ralph Waldo Emerson*

S. PRICE











Just as the heavens provide a backdrop for Mother Nature's shapeliest trees,  
paper as a part of the picture enhances a printer's handiwork.

THE 1971 PICTORIAL IS A PRODUCT OF OUR PRESSES

# THE BOOK CONCERN

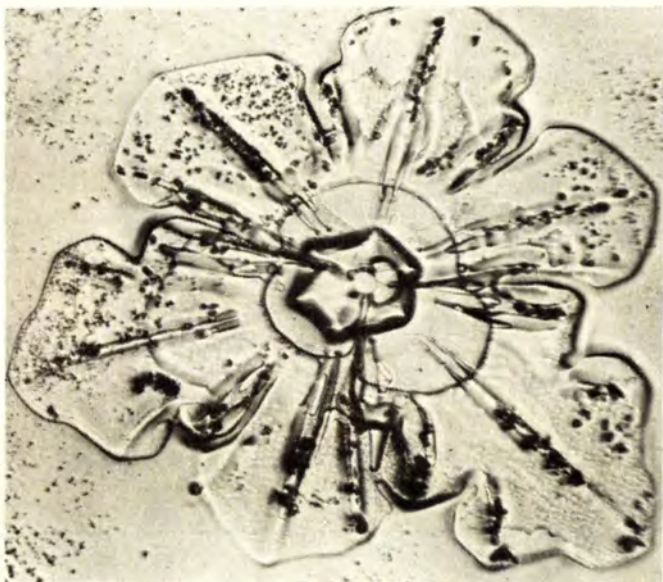
129 FRANKLIN ST. *printers* HANCOCK, MICH.



# SNOWFLAKES

By Debi Michael

The editors of the Winter Carnival PICTORIAL decided that it would be a unique idea to use pictures of snowflakes in the construction layout to show that the beauty of the snow statues is, literally, more than skin deep. Mrs. Virginia Doane of the Institute of Mineral Research was consulted about this idea and asked to take the snowflake photos.



Snowflake replicas have been made by dipping the snowflakes into thin solutions of plastic. This process is quite difficult, since a single snowflake must be captured, dipped into a solution and removed intact so that the snowflake will sublimate, leaving behind a skinlike replica. After many trials and failures, the photos on this page were obtained when a glass microscope slide was put outside and snow was allowed to fall on it. The slide was "painted" with a clear plastic spray and examined with a petrographic microscope. The photomicrographs were then made.

Our thanks to Mrs. Virginia Doane of I.M.R. for the snowflake photos.



## Herman Gundlach, Inc. The General Contractor

Building Construction

Houghton, Michigan

Tel. 482-2480

**Copper Country  
Concrete Corporation  
Gundlach Ready Mixed Concrete**

58 N. Huron St.

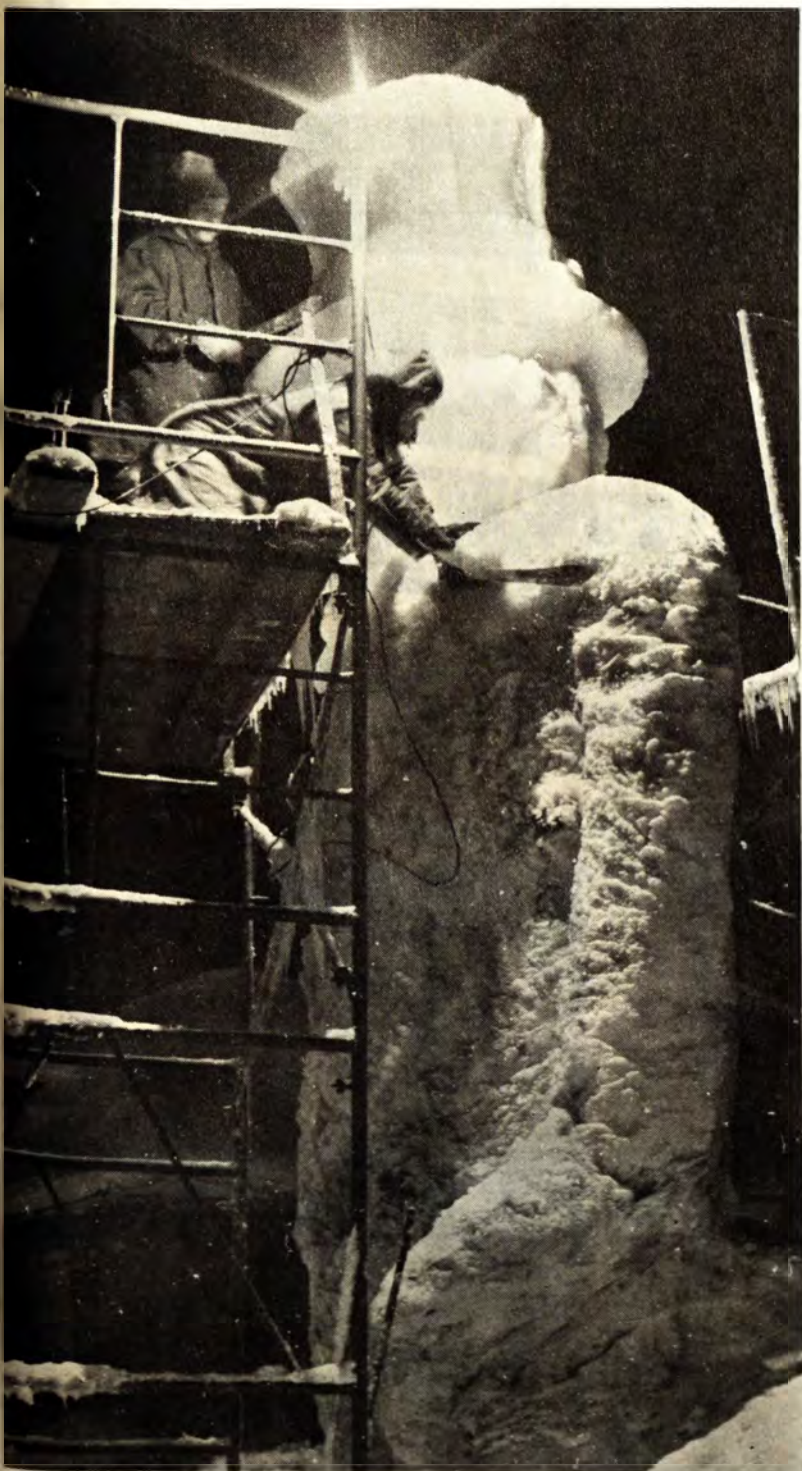
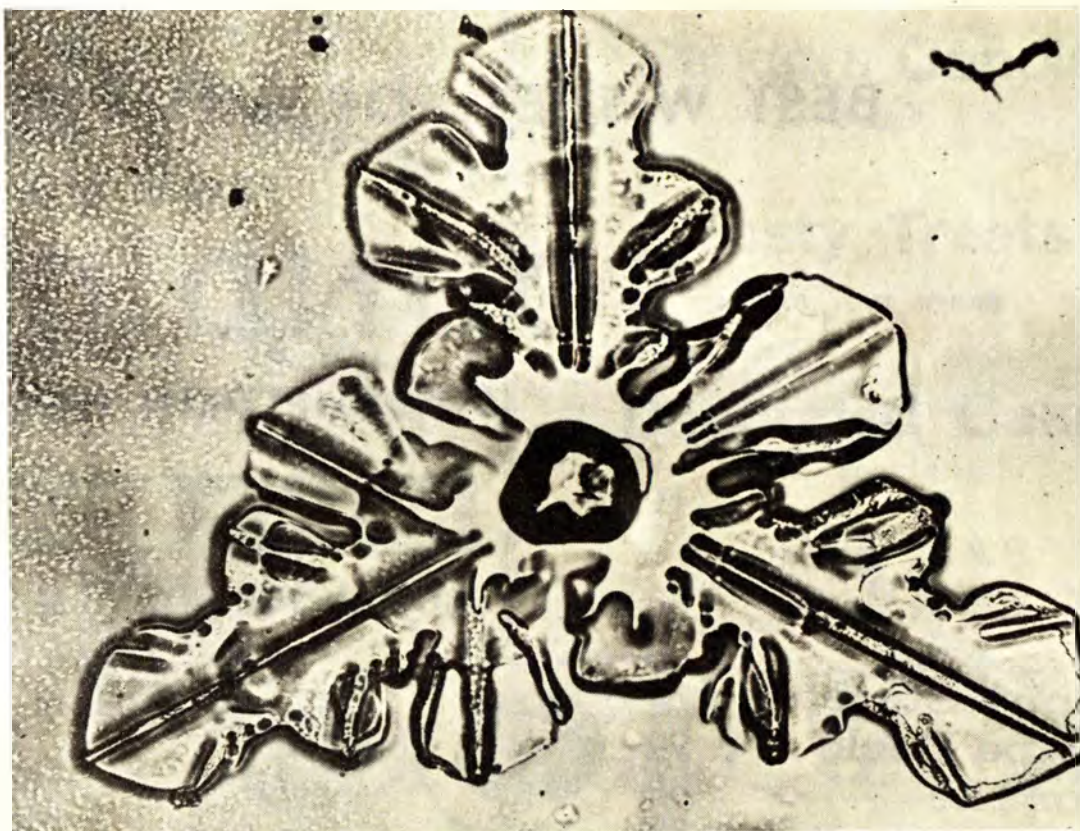
Houghton, Michigan

Tel. 482-0601





# Statue Construction .....



## Co-operation Counts



# BEST WISHES FOR A HAPPY WINTER CARNIVAL

## FROM THE

# SOUND CENTER

507 SHELDON HOUGHTON

**SONY** **SUPERSCOPE**

You never heard it so good.

The Sony 630-D

### Sony Stereo Tape Deck for the Perfectionist

Now you can get extra enjoyment from your present sound system with a fabulous solid-state, four-track stereo tape deck from Sony/Superscope. It's economical, too, because you already own the components you need! Every Sony/Superscope stereo tape deck is easy to operate and simple to install — just plug it in. And famous Sony/Superscope quality is built into every deck — regardless of price. So take a look at what a Sony/Superscope tape deck has to offer you — and take a listen to the pleasures of stereo tape recording today.



- Automatic Total-Mechanism Shut-Off
- Three Heads for Convenient Tape/Source Monitoring
- Mic/Line Mixing
- Exclusive Record Equalization Selector Switch
- Servo-Controlled Back-Tension
- Built-In Sound-on-Sound
- Exceptional Fast-Forward and Rewind Performance
- Vinyl Dust Cover

**\$239.95**



**\$299.95**

#### Features:

- Three heads.
- Built-in switching for sound-on-sound and echo effect.
- Professional slide volume controls.
- Vibration-free motor.
- Ultra-high frequency bias.
- Two large internally-lit VU meters.
- Three high-level input facilities.
- Three speeds.
- Vertical/horizontal operation.



**C-90 \$2.39**



1800' REELS

**\$4.09**

### The Sony 110

#### Features:

- Built-in electret condenser microphone.
- AC/DC operation.
- Built-in rechargeable circuit for optional nickel-cadmium lifetime battery pack.
- Auxiliary input jack.
- Pop-up cassette ejector.
- Battery condition indicator.
- Complete push-button operation.
- Tone control.
- End-of-tape alarm.



**\$109.95**



2400' — **\$6.59**



## Douglass House

— Serving —

SUNDAY BRUNCH

BANQUETS

FRIDAY FISH FRYs



Giving the Copper Country  
the best in fine foods

· ALSO ·

## Onigaming Supper Club

May thru October

MAMIYA Honeywell

ACUFINE

NIKON



DUPONT

Leica

Kodak

Wilcox Studio

Houghton

## Sanders Candies

of Detroit

## Tasty Treats

from our ovens

## Decorated Cakes

our specialty



free delivery service

## CROWN BAKERY

Houghton, Michigan

BEST WISHES FOR A  
WONDERFUL WINTER CARNIVAL

# THE CLEVELAND-CLIFFS IRON COMPANY

ISHPEMING, MICHIGAN

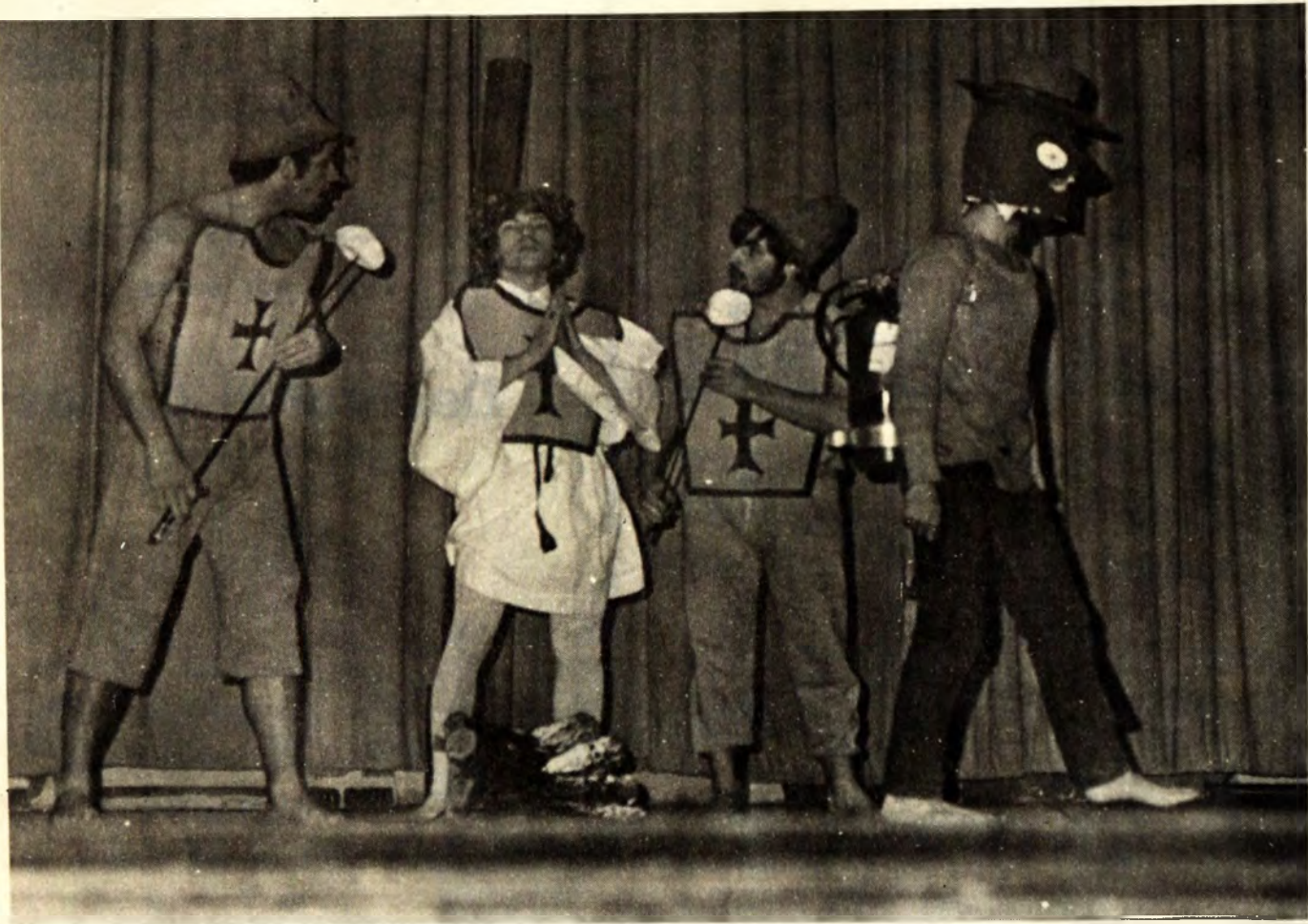
QUALITY  
SINCE



SERVICE  
1850







**2nd Class A**  
**PHI KAPPA TAU**

News Odessey

**3rd Class A**  
**THETA TAU**



Golden Age of Cinema Vaudeville Show



**2nd Class B**  
**STAG**

People's Park





DOUGLASS HOUGHTON HALL  
The Valley of the Tech-men



SIGMA PHI EPSILON  
Black Day in Dodge City



PHI LAMBDA BETA  
Tell It Like It Is, Mother Goose



TAU KAPPA EPSILON  
Snowa and the Sno-Ark



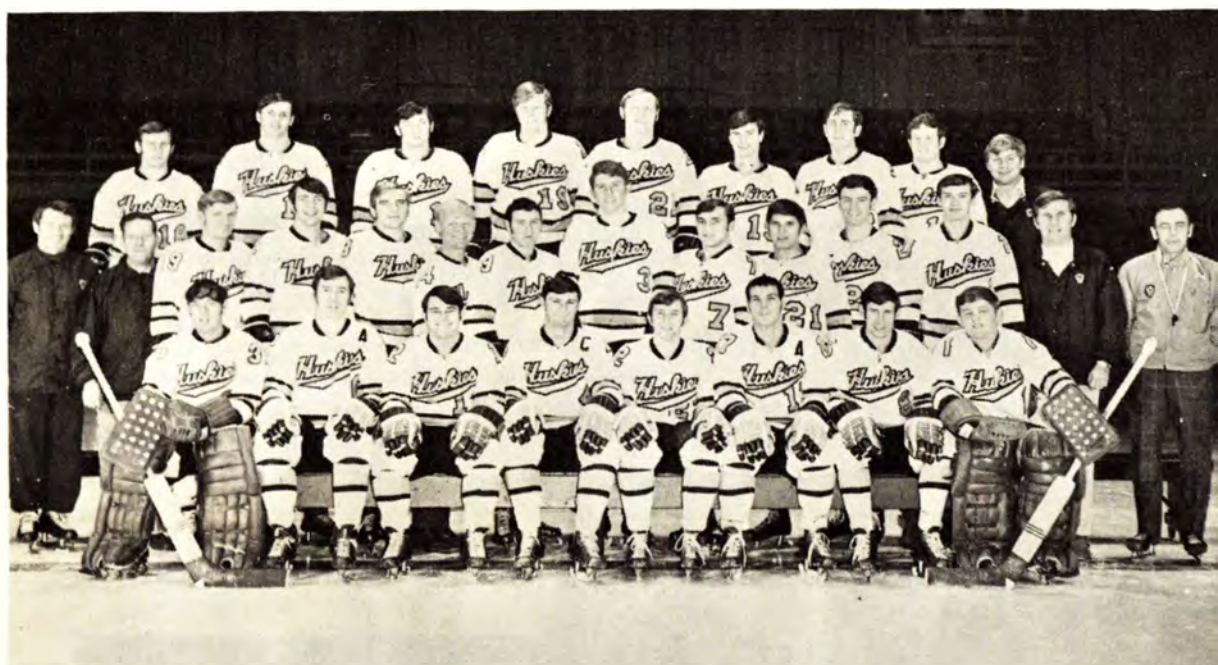


## INSURANCE HEADQUARTERS

IN THE COPPER COUNTRY  
Since 1900

Call **482-3380**  
DOUGLASS HOTEL BLDG., HOUGHTON

John MacInnes is our coach  
and our team is number One



Congratulations from your Number One Tech Supporter

on the Best Winter Carnival in the Country

## ED HAAS & CO.

Congratulations on a fine Winter Carnival  
from

# CENTRAL

## Super Market

Downtown Houghton

### Fresh Hot Pasties Daily

Open Evenings and Sundays — Tel. 482-1040

# WEBER'S

2-STORES  
2-SERVE-U  
IN  
DOWNTOWN  
HOUGHTON



## Congratulations

TO

MICHIGAN TECH'S  
WINTER CARNIVAL

*and to all who help to make it  
the best in the country.*



## WEBER'S

2 stores are your hometown  
stores when you are away  
from home.

We are here to help you  
all-ways.

*Complete Wearing Apparel  
Sporting Goods — Gifts*



## SPECIAL CARNIVAL SALE







Construction is underway on Michigan Tech's \$2.6 million ice arena. Financed entirely by student fees, the arena will be completed in December 1971.



An outstanding hockey career began for John MacInnes in the minor leagues of Toronto. The Toronto youth went on to play goalie for the University of Michigan and from there came to Michigan Tech as a member of the coaching staff. For fifteen years John MacInnes has made hockey an integral part of the Techman's life not only with his lauded coaching ability but with his warm personality. Former Huskie and now star goalie for the Black Hawks, Tony Esposito states, "The four years I spent playing hockey under John MacInnes at Michigan Tech was the best thing that ever happened to me." Tony's former teammate Al Karlander claims, "He's a great coach. Knows the game better than anyone I've ever known." This opinion is shared by the American Hockey Coaches Association who paid MacInnes their highest tribute by voting him NCAA Coach of the Year in March of 1970. Joe Galetto, former Huskie and now Assistant Placement Officer at M. T. U. comments, "It's unfortunate that every hockey player could not have the benefit of a coach like John MacInnes sometime during his hockey career."

## THE PRIZE



First presented by Governor Romney during the 1966-67 hockey season, the Governor's Cup is annually awarded to the team scoring the most goals in the two-game series during M. T. U.'s Blue Key Winter Carnival. The Huskies have won the cup four times.



The Michigan Tech Pep Band is known throughout the WCHA for the spirit and enthusiasm with which they cheer the Huskies on to victory. The group of about forty concert band members is also famed for their rendition of the Copper Country National Anthem.



# THE TEAM IN ACTION



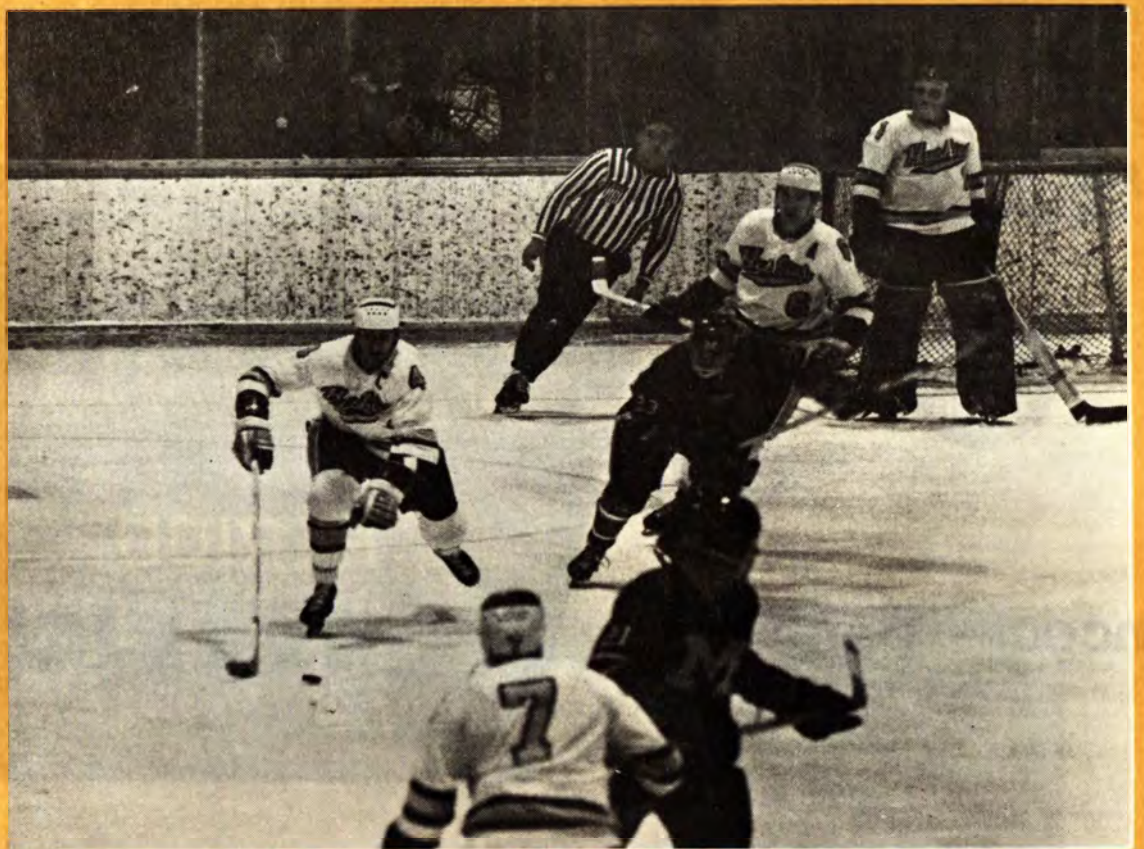
**Huskies**  
**v.s.**







**Wolverines**



**MTU Hockey  
1971**





Will women's lib bury chivalry — ALPHA KAPPA PSI



Civil Chivalry — A. S. C. E.



May OH TSE-TONGUE Devour — AROTC



Man's best friend — FORESTRY





But it's not Knight time — ST. AL's



Oh Hel-Mit Da Snow — EDEN HOUSE



I wouldn't send a knight out on a dog like this — BETA SIGMA PSI



Ladies First — PHI KAPPA THETA



**SECOND PLACE**

**CLASS B**

**DOUGLASS**

**HOUGHTON**

**HALL**

HAVE I GOT A GIRL FOR YOU



**FIRST PLACE**

**CLASS C**

**THETA CHI**

**EPSILON**

HANKY-PANKY WASN'T FOR KNIGHTS





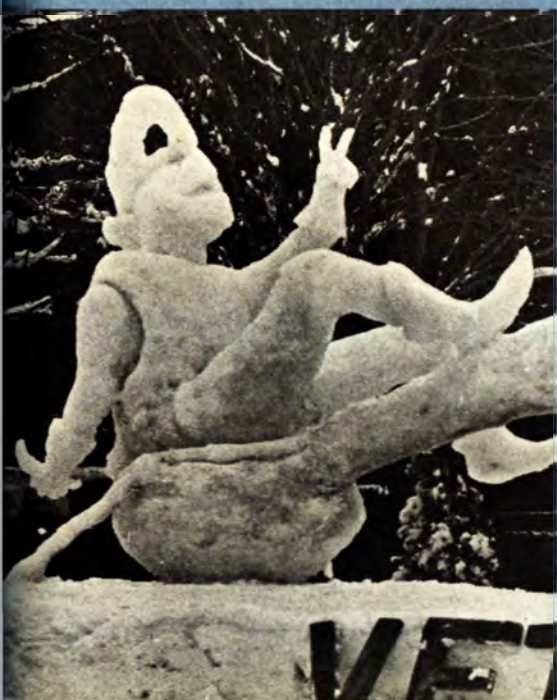


FIRST PLACE CLASS B

# MTU VETS CLUB

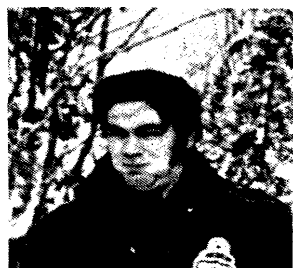


COME UP FOR A KNIGHT-CAP, SWEETIE





# Dogsled



# Speed Skating



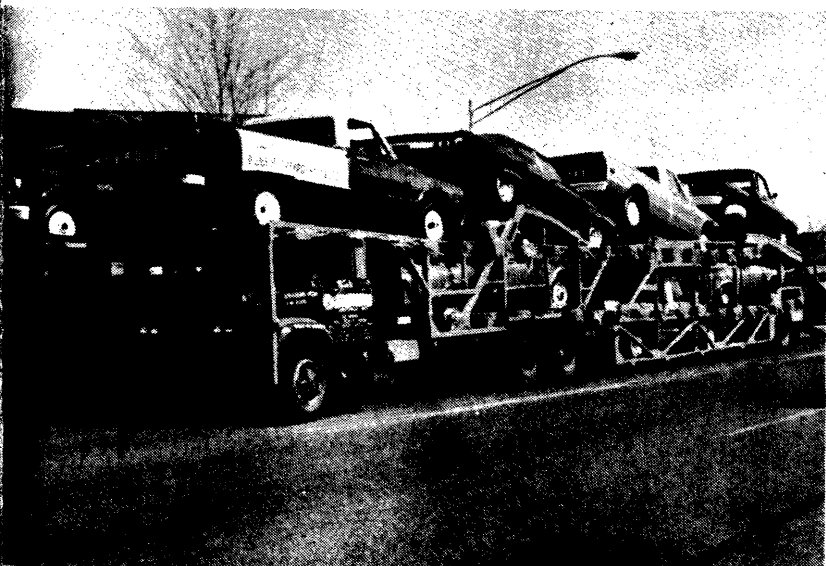




**ASPEN**

PHOTO BY : OWENS

**Best Wishes for a  
Successfull Winter Carnival**



**PUBLIC CHEVROLET SALES**

**Calumet**

**YOUR CADILLAC CHEVROLET OLDSMOBILE DEALER**





# Mont Ripley

## University Ski Area

Michigan Tech's skiing area, Mont Ripley, is continually improving their facilities. Several proposals are still on the drawing boards awaiting the go-ahead. First in priority is a new chair lift to be located west of the downhill run going to the top of the bowl. The second proposal will entail the purchase of more land to expand the present parking facilities.

Although a new ski chalet was built four years ago, the need for more locker space is required due to the ever-increasing popularity of skiing. In order to accommodate these new enthusiasts, the chalet will be remodeled to enlarge the locker rooms. Also a new service garage will be built to house the snow equipment needed to keep the slopes in top condition.

Even without these improvements, Mont Ripley's slopes provide enough of a challenge to produce NCAA and Olympic caliber skiers.



Compliments of

# Cohodas-Paoli Co., Inc.

Houghton-Ironwood



Wholesale

## Fruits - Vegetables - Groceries



## COPPER MOTOR COMPANY

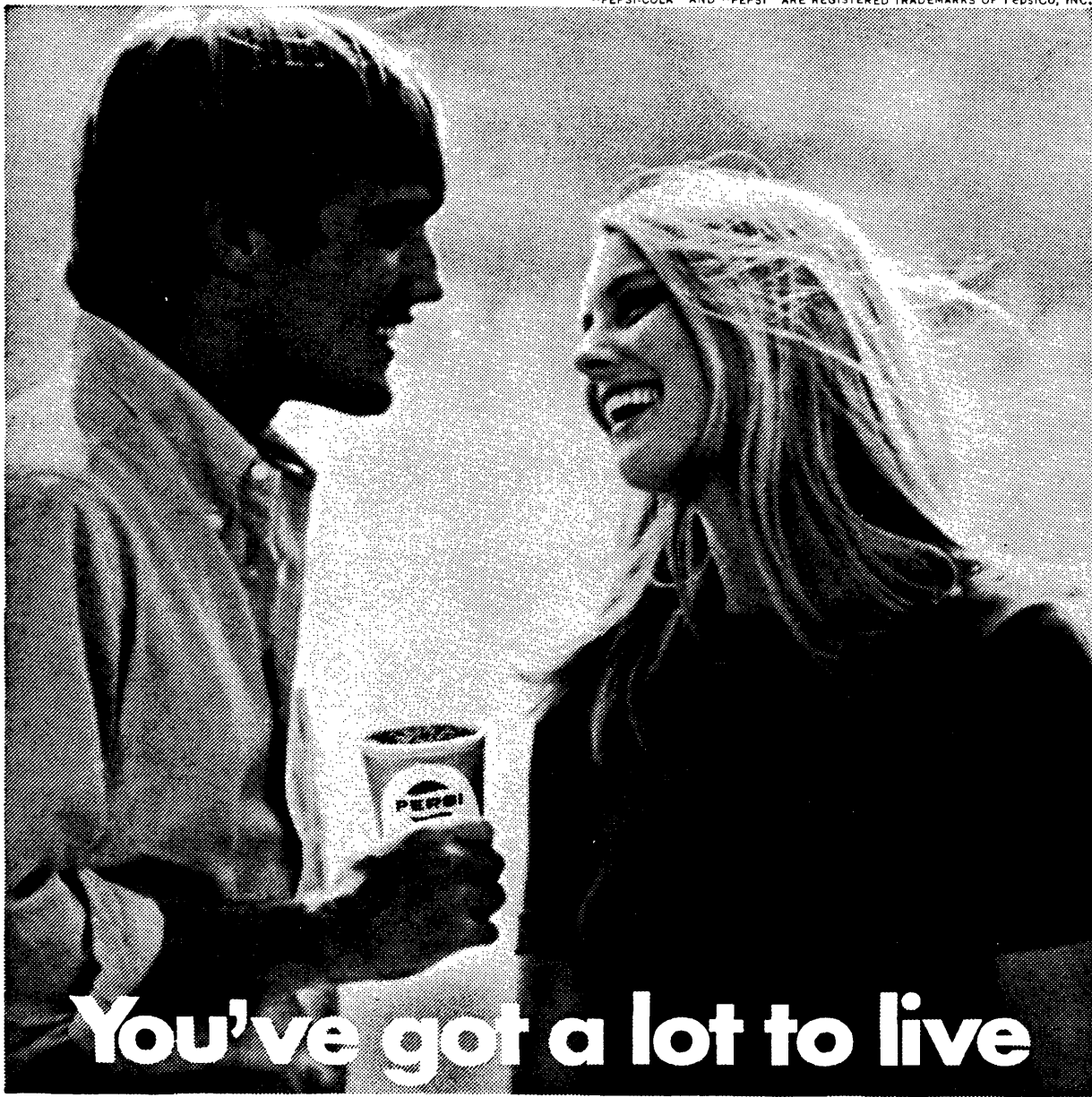
Telephone 482-1800

U S 41 South, P. O. Box 158

HOUGHTON, MICHIGAN 49931



"PEPSI-COLA" AND "PEPSI" ARE REGISTERED TRADEMARKS OF PepsiCo, INC.



**You've got a lot to live  
Pepsi's got a lot to give**

What we mean is this: living isn't always easy, but it never has to be dull. There's too much to see, to do, to enjoy. Put yourself behind a Pepsi-Cola and get started. You've got a lot to live.



## HAUG'S JEWELRY STORE

318 SHELDEN AVE., HOUGHTON

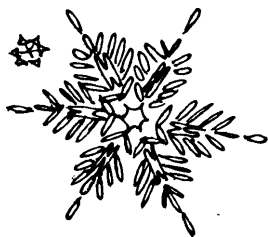
DIAMONDS AND WATCHES

ROCK COLLECTIONS

WATCH REPAIR

COPPER AND GIFTS

MICHIGAN TECH CHARMS



for all your health  
and beauty needs!

HALLMARK CARDS COLOGNE

PRESCRIPTIONS

WHITMAN and PANGBURNS  
CANDY



## Westside Pharmacy

HOUGHTON

Speed Queen



Washers - Dryers

## KIRKISH FURNITURE

Houghton

Copper Country's Largest

Home Furniture Center



Stereo - TV

Appliances





The large headed figures shown in these photos are called calithumpians and were an integral part of the 1953 carnival. These figures were built by students and entered in the Winter Carnival parade. (Photos, courtesy of Kappa Delta Psi)



# Winter Carnivals

# Of the Past

The first ice carnival ever held here will get under way tonight, with the Calumet-Portage Lake hockey game as the main feature of the first evening. In addition to this game between the rivals, there will be a speed skating contest for a prize between two picked men from each team.

Tomorrow evening will mark the real opening of the carnival itself. On that evening there will be a fancy skating program and some extra attractions. The Mac-Nord orchestra and Houghton band will furnish music for dancing and skating respectively on Wednesday, Thursday, Friday and Saturday nights.

The fancy skating will begin about 8:30 tomorrow evening. There will be two numbers first to get the ice in shape for skating and to take off the extreme slipperiness.

The program for tomorrow will be as follows:  
The midgets—Marjorie and Eunice Nelson.

Figure skating—Master Eddie Ruelle and Miss Ruth Youngs.

Exhibition of dance steps by well known local skaters. This will include the plain waltz, the spiral waltz, hesitation and Swedish dance steps and 10-step and 14-step spirals.

Everybody waltz.

On Thursday the carnival will feature the high school. There will be a championship game between Houghton and Hancock and in addition there will be a puck chasing relay contest. Friday night will be M. C. M. night with a comedy hockey game and Saturday will be the grand finale.

(Reprinted, courtesy The Daily Mining Gazette, Feb., 1922)



A 1959 prize winning snow statue.  
(Photo, courtesy of Mary Kowacki)

## Thanks...

When an editor finishes his publication and surveys the final product from cover to cover, he can't help but indulge in a few moments of silent reminiscing. As this editor reviews the activity of the last three months that went into the making of this PICTORIAL, he recalls several individuals that have generously contributed their talents for improving this magazine. To those people too numerous to mention, this space is dedicated.

The editor takes this opportunity to express a sincere note of appreciation to the individuals in University Relations who also cooperated greatly. Two people especially deserve recognition for their professional guidance: Mr. Charles Eshbach for his photographic assistance, and Mr. Lauri Leskinen for his aid in graphic artistry techniques.

Last, but certainly not least, a special note thanks must go to the members of the staff for their unselfish efforts. One could not possibly ask any better performance from a group as loyal and dedicated as they. And especially those members that endured the many all night sessions needed to accomplish the quality desired.





J. LOEPPERT

## **SYMPHONY OF SILENCE**